



VCS-273^{Q&As}

Administration of Veritas NetBackup 7.6.1 and NetBackup Appliances
2.6.1

Pass Veritas VCS-273 Exam with 100% Guarantee

Free Download Real Questions & Answers **PDF** and **VCE** file from:

<https://www.pass4itsure.com/vcs-273.html>

100% Passing Guarantee
100% Money Back Assurance

Following Questions and Answers are all new published by Veritas
Official Exam Center

- ⚙️ **Instant Download** After Purchase
- ⚙️ **100% Money Back** Guarantee
- ⚙️ **365 Days** Free Update
- ⚙️ **800,000+** Satisfied Customers





QUESTION 1

Which two storage unit types can be configured in NetBackup? (Select two.)

- A. deduplication
- B. NDMP
- C. robot
- D. media manager
- E. tape

Correct Answer: BD

QUESTION 2

Which NetBackup 7.6.1 command is used to report the potential free space of AdvancedDisk storage units?

- A. nbdevquery
- B. nbdevconfig
- C. nbemmcmd
- D. bpstinfo

Correct Answer: A

QUESTION 3

A NetBackup policy is configured to back up the following paths for a client: D:\stage E:\data E:\home F:\production Multistreaming is enabled for the backups, and multiplexing is set to 4. Backup streams are running slowly. Which step should the administrator consider to improve backup performance?

- A. increase the multiplexing level
- B. back up only one stream from each physical device on the client
- C. disable multistreaming
- D. increase the number of data buffers

Correct Answer: B

**QUESTION 4**

Using the default values in the activity monitor, a failed job is discovered among hundreds of jobs that ran during the evening. The administrator would like to view all related jobs to verify they completed successfully. Where in the activity monitor can the administrator find all related jobs?

- A. right-click the failed job and select View Job hierarchy
- B. right-click the failed job and select Troubleshooter
- C. double-click the failed job and select the Detailed Status tab
- D. right-click the failed job and select Details

Correct Answer: A

QUESTION 5

An administrator has an environment that runs over one thousand jobs a night. Some nights there are hundreds of jobs queued waiting for a resource.

Which action should the administrator take in the event that specific jobs need to run when a resource next becomes available during that evening's backup session?

- A. suspend the job and resume the job after changing the policy job priority
- B. change the job priority for the job in the policy
- C. increment the job priority in the activity monitor for the job
- D. cancel the job and restart the job after changing the policy job priority

Correct Answer: C

QUESTION 6

An administrator working offsite is required to carry out a major upgrade to a NetBackup appliance. The appliance will need to be rebooted multiple times during the upgrade process. How should the administrator connect to the appliance?

- A. connect to the IPMI interface using a web browser
- B. connect to the serial interface remotely using CLISH
- C. connect to the IPMI interface using the appliance web UI
- D. connect to the serial interface remotely using SSH



Correct Answer: A

QUESTION 7

Which capability is provided by rebasing in an MSDP storage pool?

- A. garbage collection
- B. integrity checking
- C. backup image defragmentation
- D. image deletion

Correct Answer: C

QUESTION 8

Which Storage Unit Group option causes NetBackup to choose the least recently selected storage unit in the list as each new job is started?

- A. Prioritized
- B. Failover
- C. Round Robin
- D. Media Server Load Balancing

Correct Answer: C

QUESTION 9

A NetBackup Master Server has commenced writing four long-running duplication jobs on an AdvancedDisk disk pool. The value of Maximum concurrent jobs for the storage unit and Limit I/O streams for the disk pool are both set to 4.

There are 35 jobs queued on the Master Server that require this disk pool:

5 replication jobs with priority 9999

10 backup jobs with priority 999

20 duplication jobs with priority 99

Two restore jobs that require this disk pool are then submitted with default priority.



Which job type goes active next?

- A. Backup
- B. Duplication
- C. Replication
- D. Restore

Correct Answer: D

QUESTION 10

A storage unit group is configured that has disk and then tape listed. During a backup session, jobs start retrying and then running on the tape device only. What is a likely cause of the change?

- A. The disk storage unit is full.
- B. The tape device was listed first in the storage unit group.
- C. The tape device was listed second in the storage unit group.
- D. The disk storage unit is staging to tape.

Correct Answer: B

QUESTION 11

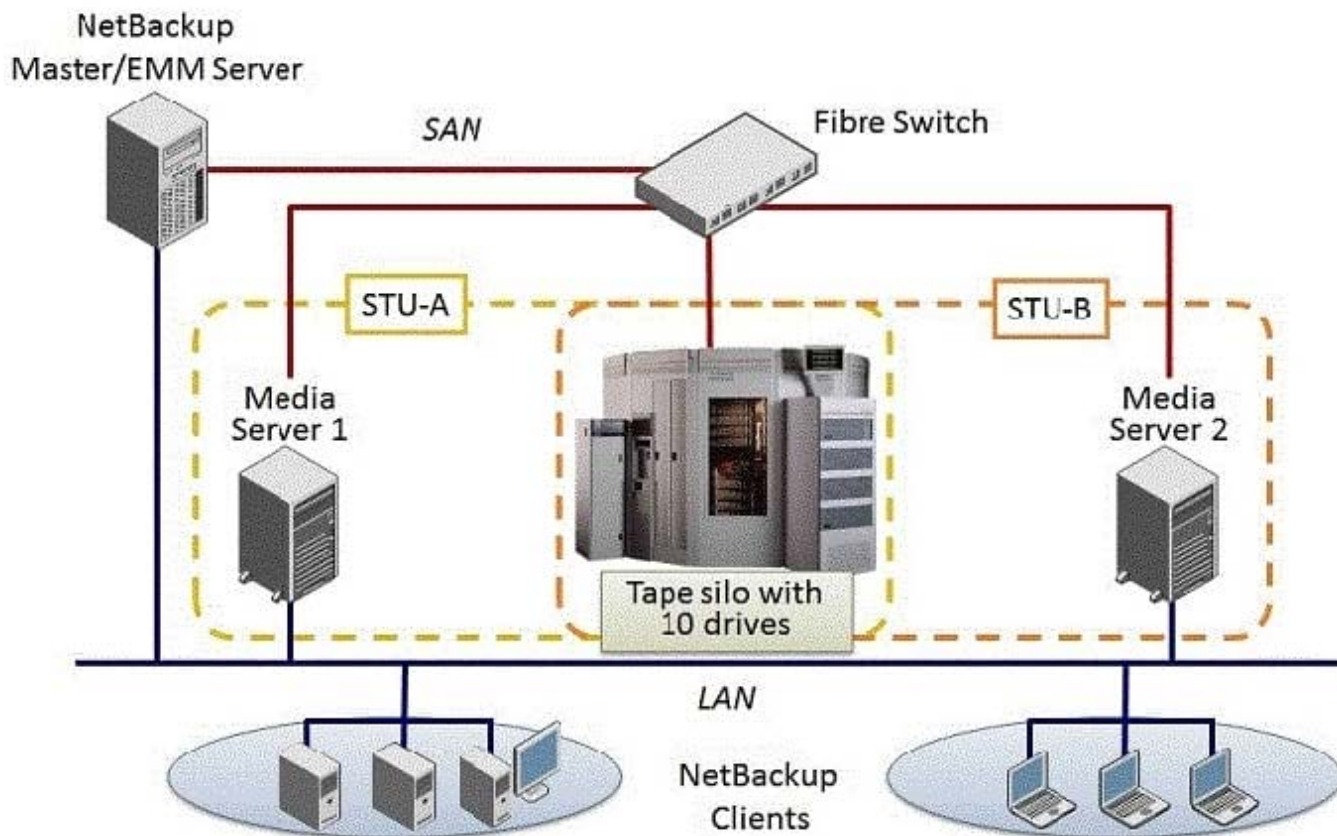
Which two actions should an administrator take to allow NetBackup to manage the allocation of volumes to volume pools? (Select two.)

- A. define a scratch pool and add all of the volumes to it so NetBackup will move volumes to the other pools as volumes are needed
- B. assign volumes to all volume pools as required in the environment
- C. define a scratch pool with assigned volumes so NetBackup will move the assigned volumes to other pools as volumes are needed
- D. create volume pools as required, but refrain from adding volumes to the pools
- E. assign volumes to NetBackup and DataStore volume pools so NetBackup will move the assigned volumes to other pools as volumes are needed

Correct Answer: AD

**QUESTION 12**

Refer to the exhibit.



Two media servers, sharing a library with 10 tape drives, exist in the NetBackup 7.6.1 environment displayed in the exhibit. Both weekly full and daily differential incremental backups need to run for the clients and each schedule has a different retention period. Because of network topology, some clients back up to Media Server 1 and some back up to Media Server 2. The environment suffers from multiple status 96 failures during the backup window.

How can the administrator minimize the number of failures?

- A. increase the Media unmount delay
- B. configure media multiplexing
- C. enable backups to span tape media
- D. enable media sharing

Correct Answer: D

QUESTION 13



An administrator discovers that backup images configured with a fixed two-week retention are failing to expire.

What is a possible cause of this issue?

- A. the disk pool containing the images is unavailable
- B. secondary SLP operations on the images are incomplete
- C. the tape containing the images is frozen
- D. the disk storage unit is capacity-managed

Correct Answer: B

QUESTION 14

Which NetBackup utility should an administrator use to determine I/O performance of the appliance storage and network?

- A. nbperfchk
- B. nbdna
- C. datacollect
- D. nbsu

Correct Answer: A

QUESTION 15

An administrator took Media Server, mediaA, offline for maintenance and set up a new Media Server, mediaB, with access to the previously backed up data. When restores are performed for data that was backed up by mediaA, the restores fail.

Which setting in the Host Properties must the administrator modify to allow successful restores?

- A. From the Master Server, run the bpimage command to change the name of the Media Server from mediaA to mediaB.
- B. Verify both Media Servers are set up in the Media Server Host Properties > Restore Failover section.
- C. In the BAR GUI, change the "Server to use for backup and restores" setting to MediaB.
- D. Verify both Media Servers are set up in the Master Server Host Properties > Restore Failover section.

Correct Answer: D



VCE & PDF

Pass4itSure.com

<https://www.pass4itsure.com/vcs-273.html>

2024 Latest pass4itsure VCS-273 PDF and VCE dumps Download

[VCS-273 VCE Dumps](#)

[VCS-273 Practice Test](#)

[VCS-273 Braindumps](#)