



VCP550PSE^{Q&As}

VMware Certified Professional - Data Center Virtualization (PSE)

Pass VMware VCP550PSE Exam with 100% Guarantee

Free Download Real Questions & Answers **PDF** and **VCE** file from:

<https://www.pass4itsure.com/vcp550pse.html>

100% Passing Guarantee
100% Money Back Assurance

Following Questions and Answers are all new published by VMware Official Exam Center

-  **Instant Download** After Purchase
-  **100% Money Back** Guarantee
-  **365 Days** Free Update
-  **800,000+** Satisfied Customers





QUESTION 1

An administrator needs to migrate a company's physical servers to virtual servers and deploy into the ESXi

5.x

cluster. During the process of converting to a virtual machine, the administrator needs to reduce the size of the disks.

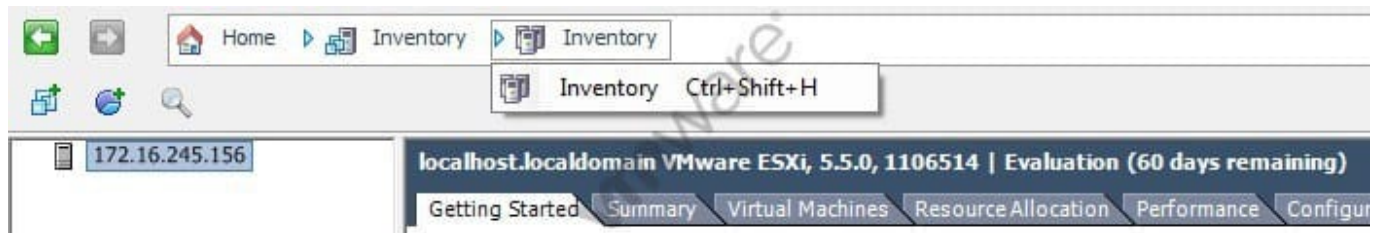
Which method should the administrator use to meet this requirement?

- A.
Use VMware Converter hot cloning with volume-based cloning at the file level
- B.
Shut down the physical server and use VMware Converter cold cloning with volume-based cloning at the block level
- C.
Use VMware Converter hot cloning with volume-based cloning at the block level
- D.
Shut down the physical server and use VMware Converter cold cloning with volume-based cloning at the file level

Correct Answer: A

QUESTION 2

-- Exhibit -



-- Exhibit -

A vSphere administrator installs an ESXi host and creates a virtual machine, then installs vCenter Server. Upon connecting to the environment, the administrator notices that several inventory views appear to be missing from the Navigation Bar as shown in the Exhibit.

Which condition would result in this behavior?

- A. The vSphere administrator is logged directly into the ESXi host.



- B. The vSphere administrator is logged directly into the vCenter Server.
- C. The vSphere administrator has limited permissions on the ESXi host.
- D. The vSphere administrator has limited permissions on the vCenter Server.

Correct Answer: A

QUESTION 3

An administrator has deployed vSphere Data Protection and wants to configure several virtual machine backup jobs. When using the vSphere client on a Windows 7 desktop, the administrator notices that there is no icon for vSphere Data Protection in the Solutions and Applications area of the vSphere client. What is the reason the administrator is unable to access vSphere Data Protection from the vSphere client on their desktop?

- A. The vSphere Data Protection client plug-in is not installed on the administrator's desktop.
- B. Accessing vSphere Data Protection requires the use of the vSphere Web Client.
- C. The vSphere Data Protection plug-in is disabled in the vSphere Client on the administrator's desktop.
- D. The administrator's desktop does not have connectivity to the vSphere Data Protection virtual appliance.

Correct Answer: B

QUESTION 4

What should an administrator do to identify compliance for virtual machine storage performance?

- A. Create a Storage Policy and apply it to the virtual machine
- B. Create Storage Capabilities and apply one or more capabilities to the virtual machine
- C. Create a Storage Policy and apply it to the datastore containing the virtual machine
- D. Create Storage Capabilities and apply one or more capabilities to the datastore containing the virtual machine

Correct Answer: A

QUESTION 5

A vSphere administrator has created a Virtual SAN Cluster with Automatic Mode Disk Groups. The cluster includes three ESXi hosts contributing one SSD and six SAS disks each. The administrator has four new ESXi hosts that boot from a fiber channel array and have no local disks attached. These four new hosts need additional shared storage but there is insufficient space on the fiber channel array. The hardware budget is limited. What can the administrator do to provide the needed storage for the lowest cost?

- A. Add the four new hosts to the Virtual SAN Cluster and use the existing storage in the cluster.
- B. Add an SAS RAID controller to each of the new hosts. Attach one SSD and six SAS disks to each RAID controller and then add the four hosts to the Virtual SAN cluster.

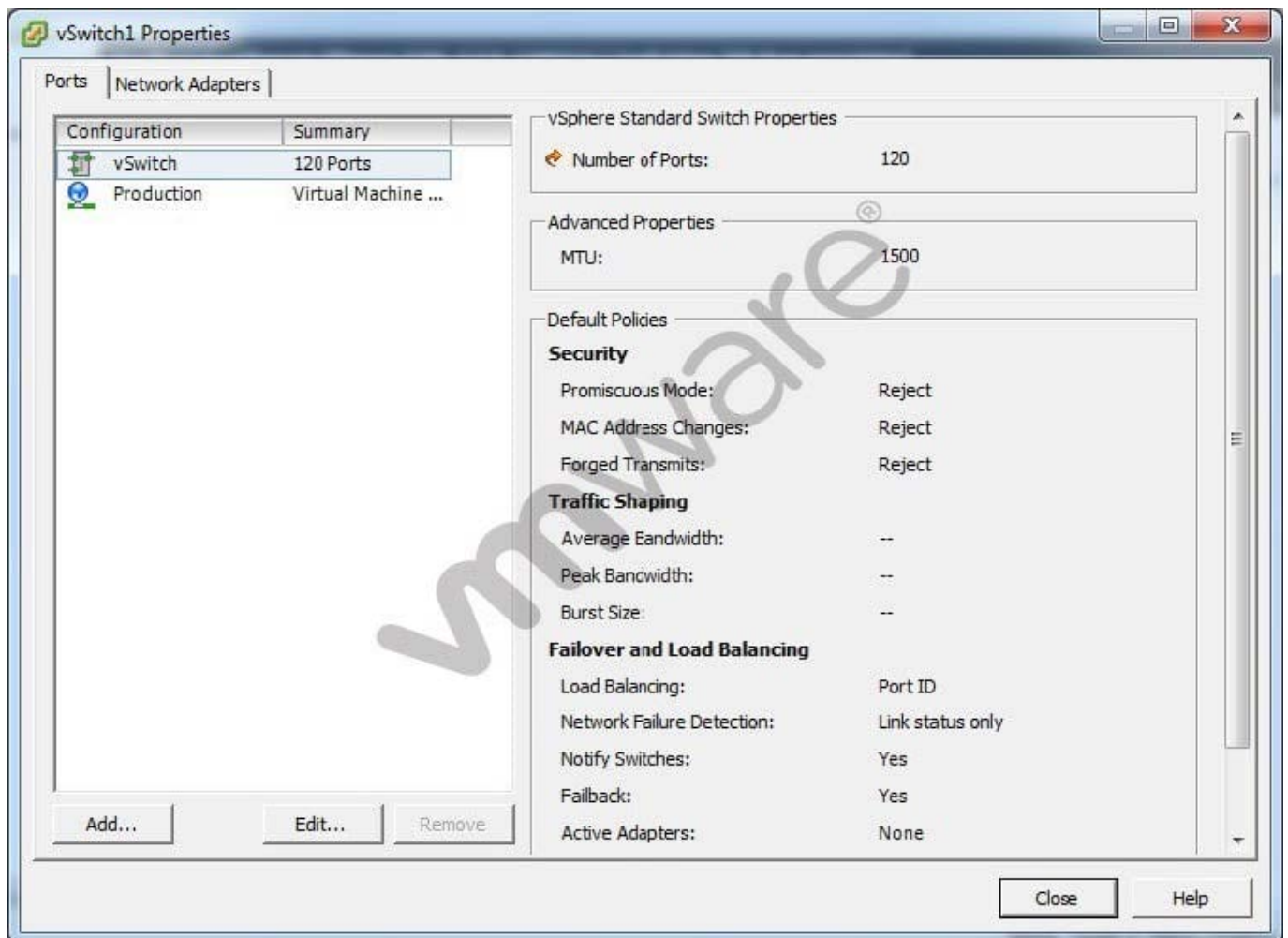


- C. Add the four new hosts to the Virtual SAN Cluster and contribute the fiber channel disks to the Virtual SAN.
- D. Add the four new hosts to the Virtual SAN Cluster and change to Manual Mode Disk Groups.

Correct Answer: A

QUESTION 6

A security audit has revealed that a virtual machine on vSwitch1 is receiving all traffic sent to the virtual switch, violating corporate policy. The vSphere administrator examines the properties for vSwitch1, as shown in the exhibit: -- Exhibit -



-- Exhibit -Which configuration explains why the virtual machine is receiving all traffic sent to vSwitch1?

- A. The Production port group has the Promiscuous Mode policy set to Accept.
- B. vSwitch1 has the Promiscuous Mode policy set to Reject.
- C. The Network Failure Detection policy on the Production port group is set to Link Status plus Beaconing.
- D. The Network Failure Detection policy on vSwitch1 is set to Link Status only.

Correct Answer: A

**QUESTION 7**

Which action should an administrator take to increase the size of a VMFS5 datastore from 2TB to 32TB?

- A. Dynamically expand the original LUN and add a second share for the NFS datastore
- B. Dynamically expand the original LUN and increase the size of the VMFS datastore
- C. Dynamically expand the original LUN and add extents to the VMFS datastore
- D. Dynamically expand the original LUN and add extents to the NFS datastore

Correct Answer: B

QUESTION 8

A vSphere administrator needs to enable Distributed Resource Scheduling (DRS) in an existing vSphere environment:

The environment contains a High Availability (HA) cluster with eight ESXi hosts.

Six ESXi hosts are not in a cluster.

DRS should be used on as many hosts as possible.

Initial placement of virtual machines should be automatically performed.

Migration recommendations should be provided, but not performed without approval.

Which procedure should the administrator perform to accomplish this task?

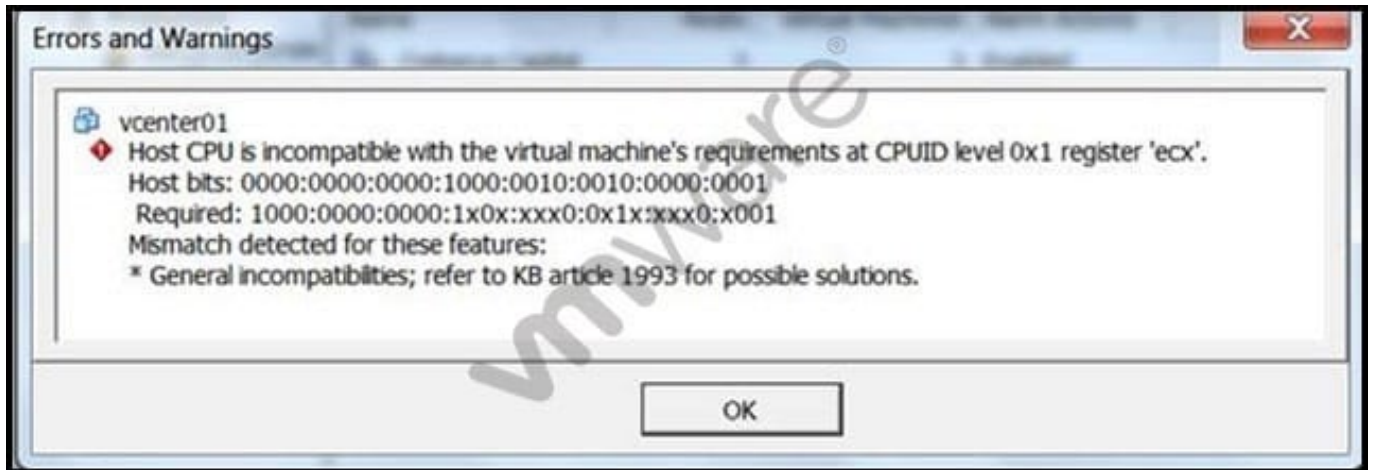
- A. Select the datacenter and create a DRS cluster. Add the six remaining hosts to this cluster, then enable DRS. Edit the DRS settings and change the automation level to Partial.
- B. Select the existing HA cluster. Add the six remaining hosts to the cluster. Enable DRS, then edit the settings and change the automation level to Manual.
- C. Select the datacenter and create a DRS cluster. Add the six remaining hosts to this cluster, then enable DRS. Edit the DRS settings and change the automation level to Manual.
- D. Select the existing HA cluster. Add the six remaining hosts to the cluster. Enable DRS, then edit the settings and change the automation level to Partial.

Correct Answer: D

QUESTION 9

A vSphere administrator has a 4 host DRS cluster with plans to grow to 8 hosts. During a vMotion migration, the following error is displayed:

-- Exhibit -



-- Exhibit -What action could be taken to resolve the issue?

- A. Ensure all hosts in the cluster contain only Intel or AMD CPUs
- B. Choose Reset all to Default in the CPU Identification Mask of the VM
- C. Verify and correct the vmkernel port settings for the vMotion network
- D. Configure the DRS Migration Threshold to the most conservative setting

Correct Answer: B

QUESTION 10

An administrator needs to install vSphere Update Manager using an external SQL Server 2008 R2 database. The administrator has created the database successfully, but cannot establish connectivity when testing the DSN.

Which configuration setting could be causing the issue?

- A. The database was configured to use Windows authentication.
- B. The DSN was configured using a 32-bit ODBC connection.
- C. Update Manager does not support the use of a remote database.
- D. Port 9087 is being blocked by Windows Firewall on the Update Manager server.

Correct Answer: A

QUESTION 11

An error occurs while building a new virtual machine with a thin provisioned virtual disk size of 20GB. The datastore has 35GB of free space. The datastore is overcommitted by 95GB.

What is preventing the virtual machine from being built?



- A. The datastore is built on a thin provisioned LUN that has run out of storage array free space.
- B. The datastore has reached the maximum overcommitment threshold.
- C. The virtual disk used by the virtual machine cannot be thin provisioned on this datastore.
- D. The virtual disk used by the virtual machine requires more free space than is available in the datastore.

Correct Answer: A

QUESTION 12

An administrator is deploying a virtual machine from a template.

Assuming all of the inventory objects below exist in the implementation, what is the highest level in the vCenter Server hierarchy to which a virtual machine can be deployed?

- A. Datacenter
- B. Cluster
- C. Resource Pool
- D. Host

Correct Answer: B

QUESTION 13

An administrator needs to deploy several virtual machines. Storage contention between the virtual machines should be managed by the VMkernel. Some of the virtual machines will use MSCS and should be highly available across the ESXi 5.5 hosts.

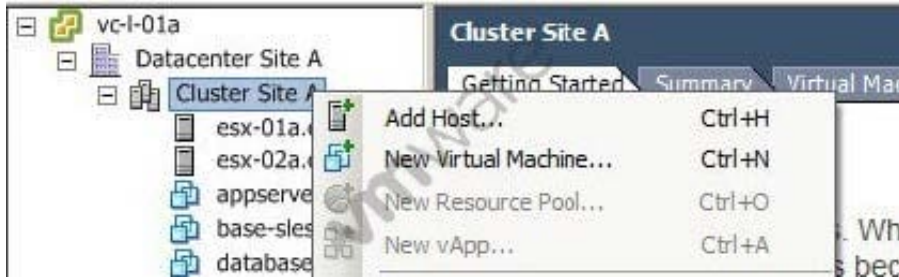
Which two storage options meet these requirements? (Choose two.)

- A. iSCSI
- B. NFS
- C. Fibre Channel
- D. vSAN

Correct Answer: AC

QUESTION 14

-- Exhibit -



-- Exhibit -What action should the vSphere administrator take to allow for a new vApp to be created in the cluster?

- A. Enable Distributed Resource Scheduling on the cluster
- B. Create a Resource Pool in the cluster, and create the vApp in the Resource Pool
- C. Enable High Availability on the cluster
- D. Create a new Datacenter, and create the vApp in the new Datacenter

Correct Answer: A

QUESTION 15

A vSphere administrator is administering a vSphere Distributed Switch port group using the vSphere Web Client. The port group was configured using Static binding, but the number of ports must increase as virtual machines are added to the port group. Which port allocation setting should the administrator use to achieve this goal?

- A. Elastic
- B. Dynamic
- C. Fixed
- D. Manual

Correct Answer: A

[Latest VCP550PSE Dumps](#)

[VCP550PSE Practice Test](#)

[VCP550PSE Braindumps](#)