



# VCP-510<sup>Q&As</sup>

VMware Certified Professional on VSphere 5

**Pass VMware VCP-510 Exam with 100% Guarantee**

Free Download Real Questions & Answers **PDF** and **VCE** file from:

<https://www.pass4itsure.com/vcp-510.html>

100% Passing Guarantee  
100% Money Back Assurance

Following Questions and Answers are all new published by VMware  
Official Exam Center

-  **Instant Download** After Purchase
-  **100% Money Back** Guarantee
-  **365 Days** Free Update
-  **800,000+** Satisfied Customers





### QUESTION 1

Which VMware solution allows for the automated discovery and mapping of applications running over the VM infrastructure?

- A. VMware vCloud Director
- B. VMware vCenter Infrastructure Navigator
- C. VMware Service Manager
- D. VMware vSphere 5

Correct Answer: B

---

### QUESTION 2

What two methods can be used to reduce the vMotion migration time of a virtual machine? (Choose two.)

- A. Enable High priority on the virtual machine before starting the Migrate wizard.
- B. Select High priority during the Migrate wizard.
- C. Lower the memory reservation for the virtual machine.
- D. Ensure the cluster has the default Swapfile policy set.

Correct Answer: BD

---

### QUESTION 3

An administrator plans to use an upgrade script to upgrade a number of ESXi 5.x hosts. What options are available for the kickstart file? (Choose two.)

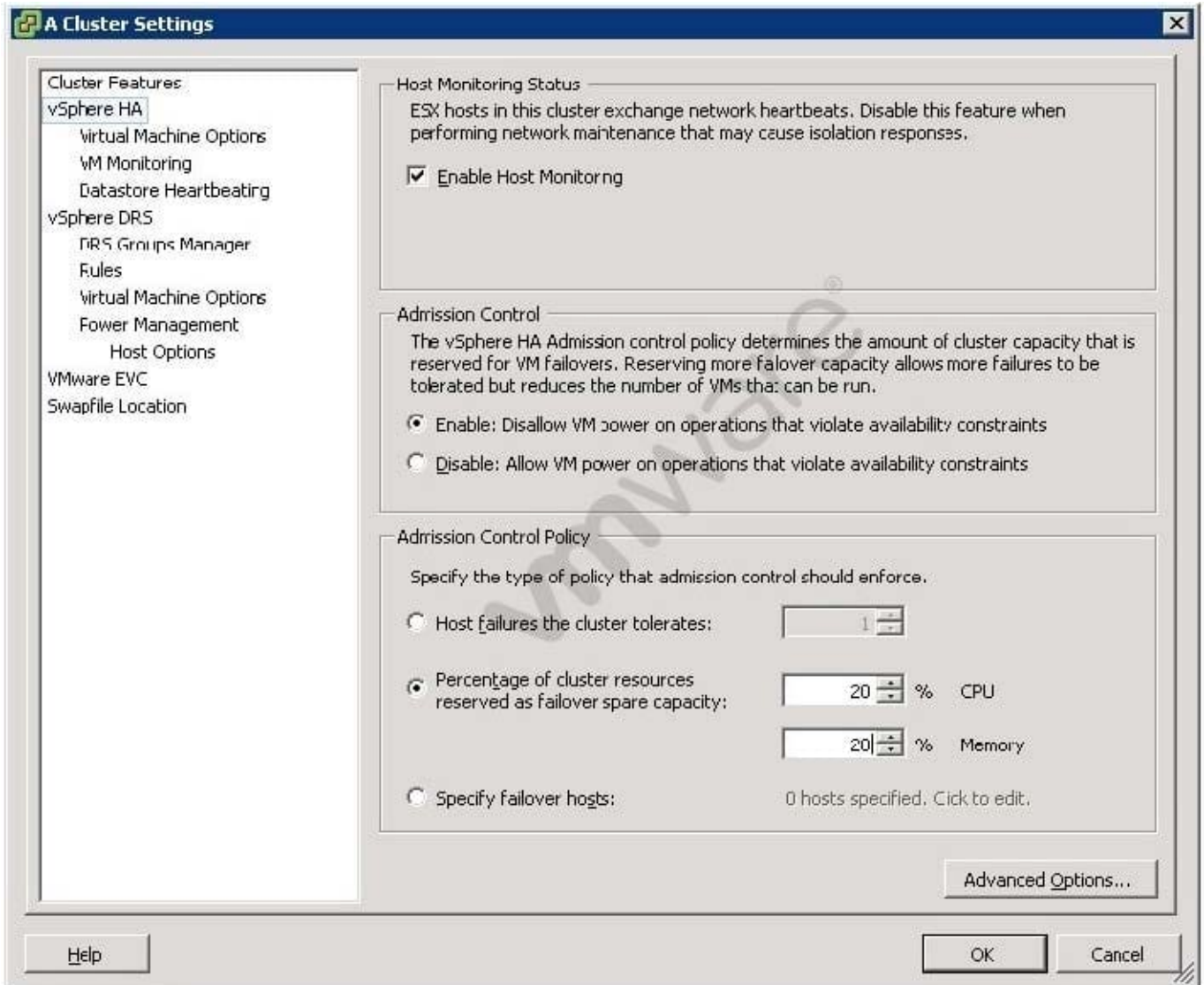
- A. dryrun - Parse and check script but does not install
- B. overwritevmfs - permits overwriting of existing VMFS volumes
- C. vcenter - specifies vCenter Server
- D. autodeploy - defines autodeploy options

Correct Answer: AB

---

### QUESTION 4

Click the Exhibit button. An administrator has a DRS/HA cluster with five ESXi 5.x hosts. When the administrator tries to start a new Web server virtual machine, an error is displayed saying insufficient resources exist for HA. Based on the HA configuration in the exhibit, which two changes can resolve the issue? (Choose two.)



- A. Shut down one or more virtual machines on the cluster.
- B. Set VM Restart Priority to Disabled for the Web server.
- C. Set Host Isolation response to Shut down.
- D. Suspend one or more virtual machines in the cluster.

Correct Answer: AD

### QUESTION 5

Click the Exhibit button. 10 ESXi 5.x hosts will be installed as part of a vSphere 5.x deployment. Security hardening is required as part of the installation. The current security profile is displayed in the exhibit. Which three services shown in the exhibit are configured to run by default in a completed vSphere installation? (Choose three.)



**Services Properties**

**Remote Access**

By default, remote clients are prevented from accessing services on this host, and local clients are prevented from accessing services on remote hosts.

Unless configured otherwise, daemons will start automatically.

Label	Daemon
I/O Redirector (Active Directory Service)	Running
Network Login Server (Active Directory Service)	Running
vSphere High Availability Agent	Running
NTP Daemon	Running
vpxa	Running
Local Security Authentication Server (Active Directory ...)	Running
ESXi Shell	Running
lbtd	Running
SSH	Running
Direct Console UI	Running
CIM Server	Running

**Service Properties**

**General**

Service: I/O Redirector (Active Directory Service)

Package Information: esx-base  
This VIB contains all of the base functionality of vSphere ESXi.

Options...

OK Cancel Help

- A. Network Login Server (Active Directory Service)
- B. SSH
- C. ESXi Shell
- D. Direct Console UI
- E. vpxa



Correct Answer: ADE

---

#### QUESTION 6

Which two vCenter plug-ins are installed with a default vSphere Client installation? (Choose two.)

- A. vCenter Hardware Status
- B. VMware ESXi Service Status
- C. VMware vSphere Update Manager
- D. VMware vCenter Storage Monitoring Service

Correct Answer: AD

---

#### QUESTION 7

An administrator is configuring Storage DRS in their environment. The Datastore cluster is composed of 4 VMFS3 volumes and 9 VMFS5 volumes.

Storage DRS has been enabled, but is showing as disabled on several virtual machine disks in the datastore cluster.

Which two conditions would cause this error to occur? (Choose two.)

- A. The virtual machine is stored on a VMFS 3 volume.
- B. One or more virtual machines have Persistent disks.
- C. The virtual machine is stored on a NFS datastore.
- D. The virtual machine is stored on a datastore with a 2mb block size.

Correct Answer: AB

---

#### QUESTION 8

An administrator is working to update the hosts and virtual machines in a vSphere 5.x deployment using Update Manager Baselines. Other than host patches, which three items require a separate procedure or process to update? (Choose three.)

- A. Operating system patches
- B. Virtual Appliance updates
- C. Virtual Machine Virtual Hardware upgrades
- D. VMware Tools on machines without VMware Tools already installed
- E. Application patches within the virtual machine





Correct Answer: ADE

### QUESTION 9

Click the Exhibit button. An administrator has deployed a two-node cluster with HA and DRS enabled. DRS has been configured for fully automated mode. The management and vMotion interfaces have been configured on separate physical networks. Initial DRS testing on this cluster reveals that virtual machines are not being migrated despite great disparity in resource use between the ESX hosts in the cluster. The exhibit shows the error and the network configuration for one of the hosts. Which task would successfully resolve this problem?

The screenshot shows the vSphere Client interface for a VMware ESXi host. The 'Configuration' tab is selected, showing the 'Networking' section. Two virtual switches are visible: vSwitch1 and vSwitch2. vSwitch1 is connected to physical adapter vmnic1, and vSwitch2 is connected to physical adapter vmnic2. The 'Recent Tasks' pane at the bottom shows a failed task: 'Migrate virtual machine' for 'Web server03-a'. The error message states: 'A general system error occurred: The vMotion failed because the ESX hosts were not able to connect over the vMotion network. Please check your vMotion network settings and physical network configuration.'

- A. Add a vmnic to the VMkernel port
- B. Configure the DRS Migration Threshold to Aggressive
- C. Connect the network cable to the correct physical network
- D. Migrate virtual machines manually using vMotion

Correct Answer: C

### QUESTION 10



Why is converting a virtual machine to a template significantly faster than creating a clone of the virtual machine?

- A. Making a clone creates a linked-mode virtual disk.
- B. Making a clone creates a full copy of the VMDK file.
- C. Making a clone only creates a copy of the .vmx file.
- D. The template conversion has low priority on the system CPU.

Correct Answer: B

### QUESTION 11

Click the Exhibit button. An administrator is seeing a warning on one of their hosts. The warning in the Triggered Alarms panel appears to come from a custom configured host alarm. The administrator has not seen any actions taken for this alarm even though the actions are configured in the alarm definition. The configured actions are shown in the exhibit. What change can the administrator make to correct the problem?

Action	Configuration	Repeat
Send a notification email	admin@acme.com	Once
Run a command	c:\HostMem.bat	Once
Send a notification trap		Once Repeat Once

- A. Configure the Alarm Frequency to repeat more often.
- B. Add an action for when the alarm changes from yellow to red.
- C. Add an action for when the alarm changes from green to yellow.
- D. Configure the alarm yellow to red action to repeat for all three actions configured.



Correct Answer: C

---

#### QUESTION 12

Your manager has requested that you look for ways to ensure that your storage is utilized evenly. Which feature of vSphere 5 would help achieve this request?

- A. sDRS
- B. profile driven storage
- C. VAAI
- D. thin provisioning

Correct Answer: A

---

#### QUESTION 13

A storage array containing a VMFS datastore must be taken offline for maintenance. What can be done to avoid virtual machine downtime on VMs running in this datastore?

- A. Clone the virtual machines to a VMFS datastore on a different storage array.
- B. Use Site Recovery Manager to failover the virtual machines on the storage array to the recovery site.
- C. Use vSphere HA to failover the virtual machines to ESX Servers attached to a different storage array.
- D. Use Storage VMotion to migrate the virtual machines to a VMFS datastore on a different storage array.

Correct Answer: D

---

#### QUESTION 14

Which is an important benefit provided by VLANs?

- A. Reduced hardware requirements
- B. Increased broadcast traffic
- C. Fault tolerance
- D. Increased security on a network segment

Correct Answer: A

---

#### QUESTION 15

Networking policies, such as traffic shaping and security, can be configured on the following vSphere elements:





- A. On the physical network interface and the vSwitch
- B. On the port group and the physical network interface
- C. On the port group and the vSwitch
- D. On the vSwitch and the attached virtual machine

Correct Answer: C

[VCP-510 PDF Dumps](#)

[VCP-510 VCE Dumps](#)

[VCP-510 Exam Questions](#)