

100% Money Back Guarantee

Vendor: OMG

Exam Code: UM0-300

Exam Name: Omg-Certified uml professional advanced exam

Version: Demo

QUESTION 1

What is true about model representation? (Choose three)

- A. A model is not a complete representation of a system.
- B. If several models exist for the same system, they represent different view points on the system
- C. A model is a complete representation of all aspects of a system.
- D. No dependencies can exist between two different models.
- E. A model represents a system.
- F. Only traceability dependencies can exist between two different models.

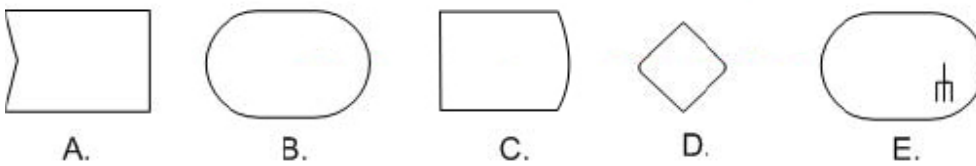
Answer: A,B,E

QUESTION 2

CORRECT TEXT

Which symbol depicts an AcceptEventAction?

Exhibit:



Answer: A

QUESTION 3

What are the names of the three compliance levels that organize the UML superstructure packages?

- A. simple, intermediate, advanced
- B. basic, intermediate, complete
- C. basic, intermediate, advanced
- D. primary, secondary, tertiary
- E. partial, complete, interchange

Answer: B

QUESTION 4

What is an abstract type in OCL?

- A. Integer
- B. Sequence
- C. Bag
- D. Set

E. Collection

Answer: E

QUESTION 5

Which situations would result in errors when executing a `ReclassifyObjectAction` on an object? (Choose two)

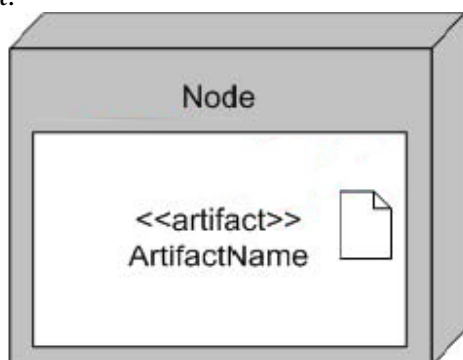
- A. All classifiers are removed from the object.
- B. The old and new classifiers are identical.
- C. An old classifier does not already classify the object.
- D. No new classifiers are supplied.
- E. A new classifier already classifies the object.
- F. A new classifier is an abstract class.

Answer: A,F

QUESTION 6

What relationship is represented in the exhibit?

Exhibit:



- A. manifestation of an artifact
- B. node with deployed artifacts
- C. node deployed on an artifact
- D. node with annotated property values
- E. node with deployment specifications

Answer: B

QUESTION 7

What determines how many values will move across an object flow edge at one time?

- A. effect
- B. ordering
- C. upper bound
- D. selection
- E. weight

F. transformation

Answer: E

QUESTION 8

What can be used when the source of an object flow has values of type Customer, and the target needs the name of the customer?

- A. upper bound
- B. selection
- C. effect
- D. ordering
- E. weight
- F. transformation

Answer: F

QUESTION 9

What happens to the exception from a RaiseExceptionAction when used in a model that has no exception parameters declared?

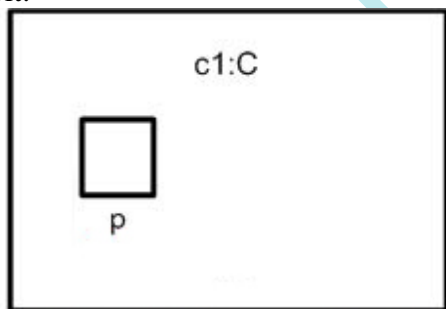
- A. propagated to an enclosing protected node, if any
- B. appended to an exception log
- C. handled by a default handler
- D. sent to the "ExceptionManager" object
- E. ignored

Answer: A

QUESTION 10

What does the composite structure notation show in the exhibit?

Exhibit:



- A. p is a behavior port.
- B. p is a hidden port.
- C. p is a port providing a system service.
- D. p is a port on a part of composite C, which is not shown.

Answer: B

QUESTION 11

How is a power type indicated in a diagram?

- A. as an association line labeled <<powerType>>
- B. as a generalization set labeled with a colon followed by a classifier name
- C. as a classifier labeled <<powerType>>
- D. as a generalization set labeled <<powerType>>
- E. as a generalization set labeled with a colon followed by the label <<powerType>>

Answer: B

QUESTION 12

Which statements are true about OCL? (Choose three)

- A. OCL is a procedural language.
- B. OCL is a query language.
- C. OCL is a typed language.
- D. OCL is a programming language.
- E. OCL is a specification language.
- F. OCL is a programming and procedural language.

Answer: B,C,E

QUESTION 13

What is true about a parameterized package? (Choose two)

- A. a package where all classes in the package are parameterized
- B. a package with different variants, where the parameters tell how the package may vary
- C. names of classes within a parameterized package can be parameters of the package
- D. a package from which new packages can be defined by binding parameters
- E. a package that is instantiable, and where the actual parameters are provided when creating package instances
- F. a package with parameters that are names of other imported packages and a binding tells which actual packages are imported

Answer: C,D

QUESTION 14

What is true about a model in UML 2.0?

- A. can represent all system structures
- B. is a kind of package
- C. can represent only software systems

- D. cannot contain another model
- E. is a kind of component

Answer: B

QUESTION 15

An employee inadvertently removed all of the ownedMembers of the new BoosterMotor component from his company's development repository. The next day, the manager was unable to find some pieces of the BoosterMotor component's specification. What pieces could the manager no longer find? (Choose two)

- A. the component's isIndirectlyInstantiated attribute
- B. the component repository
- C. test scripts for the rocket sled simulation
- D. failure mode use cases
- E. the launch assembly housing the BoosterMotor

Answer: C,D

QUESTION 16

What does a port specification on a trigger do?

- A. delay the creation of the parts of an encapsulated classifier until a specified request is received
- B. restrict the trigger to events arriving through a specific port
- C. create a new port after a classifier has been instantiated
- D. send a request to a port

Answer: B

QUESTION 17

What is NOT true of a transition in a protocol state machine?

- A. may have no associated operation
- B. may have a precondition
- C. may have multiple associated operation
- D. may have a postcondition

Answer: C

QUESTION 18

When a component is deleted, what happens to objects in a component's namespace?

- A. objects are deleted
- B. contents of the component's namespace are promoted to its superclass
- C. objects continue to exist

D. only those objects that participate in shared aggregations are retained

Answer: A

QUESTION 19

If an activity is executed three times in parallel, how many executions exist? (Choose two)

- A. two
- B. three
- C. one
- D. none
- E. any number

Answer: B,C

QUESTION 20

What is true of a protocol state machine?

- A. may have a behavioral feature context
- B. must be associated with exactly one classifier
- C. may be associated with any number of classifiers
- D. cannot be associated with a classifier

Answer: B

QUESTION 21

By what means can a design document be associated with the component it describes? (Choose three)

- A. import
- B. dependency
- C. power types
- D. inheritance
- E. ownership
- F. association end subsets

Answer: A,B,E

QUESTION 22

What is wrong with the collaboration occurrence shown in the exhibit?
Exhibit:



- A. Client and Server role names should be underlined.
- B. The <<occurrence>> keyword is missing.
- C. The <<role>> keywords are missing.
- D. The collaboration occurrence name should be underlined.
- E. Role bindings should be represented by dashed lines.

Answer: E

QUESTION 23

Which classifiers may NOT realize an InformationItem?

- A. Component
- B. Interface
- C. ObjectNode
- D. Class
- E. Signal
- F. InformationItem

Answer: C

QUESTION 24

The preconditions of behavioral features of an interface can be specified in what way?

- A. the set of its features
- B. the actions of its protocol state machine
- C. the parameters of its protocol state machine
- D. comments attached to the corresponding features
- E. one or more guard conditions of a protocol state machine

Answer: E

QUESTION 25

Duplicates are NOT allowed in which OCL types?

- A. Collection
- B. Bag
- C. Set
- D. Sequence

Answer: C

QUESTION 26

What does a local precondition mean?

- A. An activity begins executing when the precondition becomes true.
- B. An action begins executing when the precondition becomes true.
- C. The modeler expects the precondition to be true when an activity begins executing.
- D. The modeler expects the precondition to be true when an action begins executing.
- E. An activity may not begin executing unless the precondition is true.
- F. An action may not begin executing unless the precondition is true.

Answer: D

QUESTION 27

If a data store node has three values and one moves across an outgoing edge, how many are left?

- A. one
- B. two
- C. none
- D. three

Answer: D

QUESTION 28

What is NOT possible when a classifier receives a request via one of its ports?

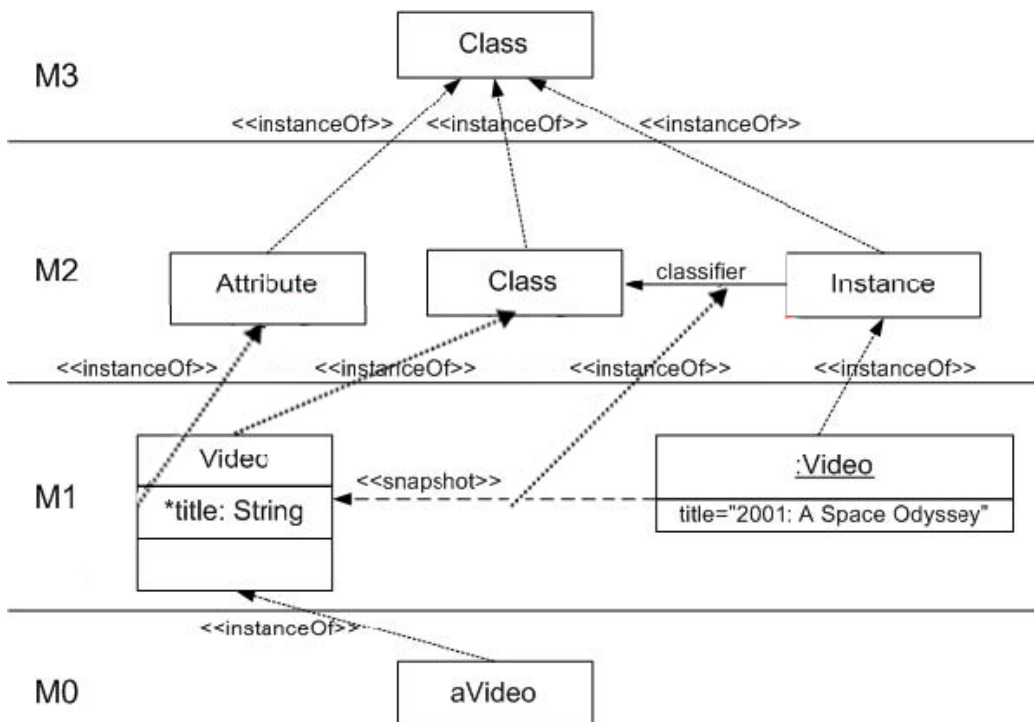
- A. A new port is created on the classifier.
- B. The request does not trigger any behavior and is not forwarded.
- C. The port routes the request to one of a number of parts depending on the content of the request.
- D. A behavior of the classifier is invoked.
- E. The request is forwarded to a part of the classifier.

Answer: A

QUESTION 29

To which layers in the 4-layer metamodel hierarchy for the UML metamodel (as depicted in the exhibit) do M1 and M2 correspond?

Exhibit:



- A. M2 = user model; M1 = UML metamodel
- B. M2 = user model; M1 = runtime instances
- C. M2 = UML metamodel; M1 = user model
- D. M2 = MOF meta-metamodel; M1 = UML metamodel
- E. M2 = UML metamodel; M1 = MOF meta-metamodel

Answer: C

QUESTION 30

What kind of relationship is an information flow in UML 2.0?

- A. connector
- B. transition
- C. association
- D. dependency

Answer: D

QUESTION 31

What kind of relationship is an information flow in UML 2.0?

- A. association
- B. dependency
- C. connector
- D. transition

Answer: B

QUESTION 32

Which statements are true about OCL? (Choose three)

- A. OCL is a typed language.
- B. OCL is a programming language.
- C. OCL is a programming and procedural language.
- D. OCL is a query language.
- E. OCL is a procedural language.
- F. OCL is a specification language.

Answer: A,D,F

QUESTION 33

What does a collaboration occurrence describe?

- A. a collaboration that contains a set of actual instances (as opposed to roles)
- B. an object that is an instance of a collaboration
- C. the instantiation of the pattern specified by the corresponding collaboration
- D. a particular aspect of a collaboration

Answer: C

QUESTION 34

An employee inadvertently removed all of the ownedMembers of the new BoosterMotor component from his company's development repository. The next day, the manager was unable to find some pieces of the BoosterMotor component's specification. What pieces could the manager no longer find? (Choose two)

- A. test scripts for the rocket sled simulation
- B. failure mode use cases
- C. the component's isIndirectlyInstantiated attribute
- D. the launch assembly housing the BoosterMotor
- E. the component repository

Answer: A,B

QUESTION 35

In the exhibit, at which levels are the DeploymentSpecifications?
Exhibit:

<pre><<deployment spec>> DeployA</pre>	<pre><<deployment spec>> <u>DeployB</u></pre>
<pre>execution: execKind transaction:Boolean</pre>	<pre>execution: thread transaction:true</pre>

- A. DeployA = instance level, DeployB = instance level
- B. DeployA = spec level, DeployB = spec level
- C. DeployA = instance level, DeployB = spec level
- D. DeployA = spec level, DeployB = instance level

Answer: D

QUESTION 36

If an action has a behavior with three sets of parameters, how many of the sets can provide output for a single execution of the behavior?

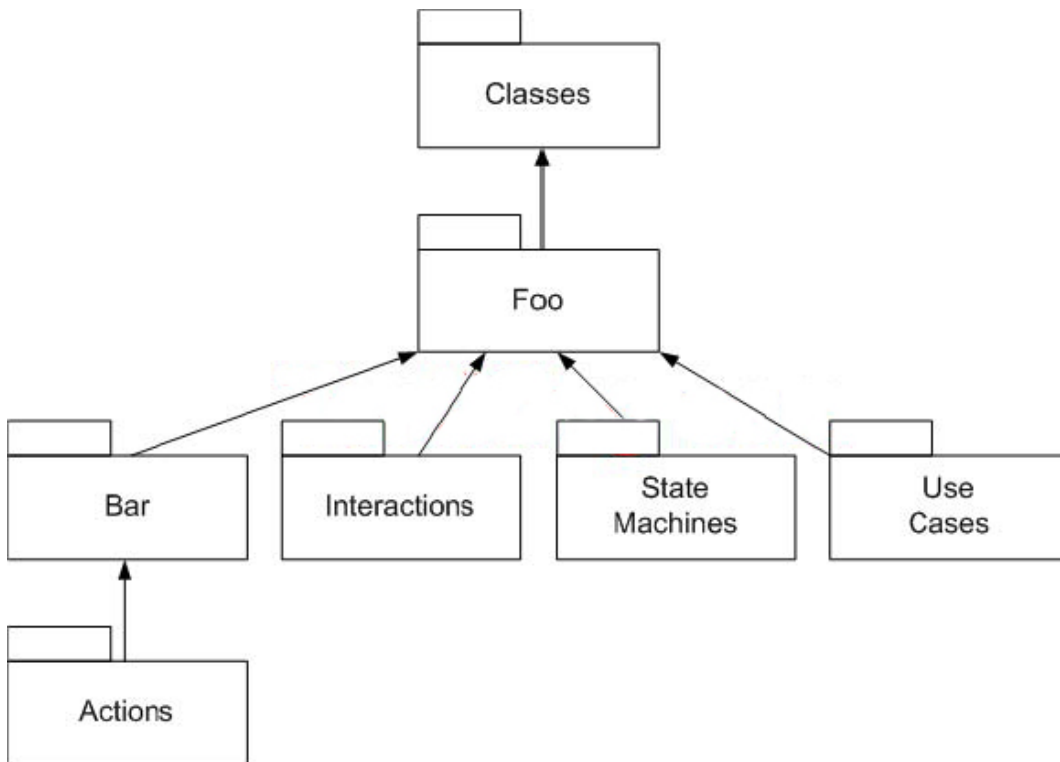
- A. any number
- B. two
- C. one
- D. three

Answer: C

QUESTION 37

The exhibit depicts the UML superstructure packages for behavioral models. What is the correct identity for packages Foo and Bar?

Exhibit:



- A. Foo = Activities; Bar = Collaborations
- B. Foo = CommonBehaviors; Bar = Activities
- C. Foo = CoreBehavior; Bar = Communications
- D. Foo = Collaborations; Bar = Sequences
- E. Foo = Collaborations; Bar = Activities

Answer: C

QUESTION 38

What boundary do lightning bolt arrows cross to have an effect?

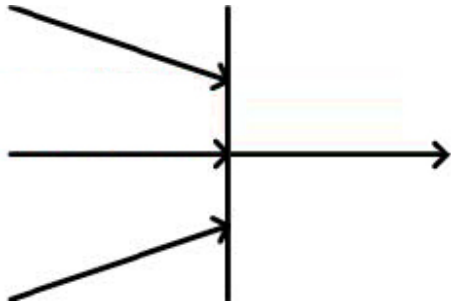
- A. structured node
- B. interruptible region
- C. activity
- D. exception region
- E. expansion region

Answer: B

QUESTION 39

In the exhibit, what is the minimum number of incoming arrows that must provide values for the outgoing arrow to be given a value?

Exhibit:



- A. one
- B. two
- C. none
- D. three

Answer: A

QUESTION 40

What are the ways that the UML metamodel reuses the InfrastructureLibrary package?
(Choose two)

- A. specializes meta-metaclasses that are defined in the InfrastructureLibrary
- B. exports and generalizes metaclasses in the InfrastructureLibrary
- C. imports and specializes metaclasses in the InfrastructureLibrary
- D. stereotypes meta-metaclasses that are defined in the InfrastructureLibrary
- E. is instantiated from meta-metaclasses that are defined in the InfrastructureLibrary

Answer: C,E

QUESTION 41

An information flow may NOT occur between which elements?

- A. classes
- B. instance specifications
- C. use cases
- D. packages
- E. associations

Answer: E

QUESTION 42

Which stereotype is NOT expected to see decorating an ExecutionEnvironment instance?

- A. <<database subsystem>>
- B. <<stream file>>
- C. <<workflow engine>>
- D. <<CRM System>>

E. <<OS>>

Answer: B

QUESTION 43

What is an abstract type in OCL?

- A. Bag
- B. Sequence
- C. Integer
- D. Set
- E. Collection

Answer: E

QUESTION 44

Which stereotype CANNOT be used to elaborate the semantic intent of an Artifact instance?

- A. <<library>>
- B. <<source>>
- C. <<executable>>
- D. <<script>>
- E. <<specification>>

Answer: E

QUESTION 45

What characteristic of an object node can prevent it from receiving a value?

- A. selection
- B. effect
- C. ordering
- D. upper bound
- E. transformation
- F. weight

Answer: D

QUESTION 46

What does the protocol conformance between two protocol state machines mean?

- A. all triggers in the two protocol state machines must be the same
- B. the specific state machine must abide by the behavior of the general state machine
- C. the general state machine must abide by the behavior of the specific state machine
- D. the two protocol state machines must be the same

E. the specific state machine must have the same number of states and transitions as the general machine

Answer: B

QUESTION 47

How can UML be extended? (Choose two)

- A. reusing part of the UML infrastructure library and augmenting it with metaclasses and relationships
- B. using XML Metadata Interchange (XMI)
- C. using profiles
- D. using the Object Constraint Language (OCL)
- E. using Interface Definition Library (IDL)

Answer: A,C

QUESTION 48

If a data store node has three values and one moves across an outgoing edge, how many are left?

- A. three
- B. none
- C. two
- D. one

Answer: A

QUESTION 49

An information flow may NOT occur between which elements?

- A. instance specifications
- B. associations
- C. classes
- D. use cases
- E. packages

Answer: B

QUESTION 50

When can an OCL expression be used to specify a state change?

- A. when the stereotype <<volatile>> is used
- B. when expressing the preconditions of an operation
- C. when expressing the postconditions of an operation
- D. never

E. in all circumstances

Answer: C

QUESTION 51

Which situations would result in errors when executing a ReclassifyObjectAction on an object? (Choose two)

- A. A new classifier already classifies the object.
- B. The old and new classifiers are identical.
- C. All classifiers are removed from the object.
- D. An old classifier does not already classify the object.
- E. A new classifier is an abstract class.
- F. No new classifiers are supplied.

Answer: C,E

QUESTION 52

What is wrong with the collaboration occurrence shown in the exhibit?
Exhibit:



- A. The collaboration occurrence name should be underlined.
- B. The <<role>> keywords are missing.
- C. The <<ourence>> keyword is missing.
- D. Client and Server role names should be underlined.
- E. Role bindings should be represented by dashed lines.

Answer: E

QUESTION 53

An association class possesses the properties of which elements? (Choose two)

- A. interface
- B. association
- C. class
- D. expression
- E. constraint

Answer: B,C

QUESTION 54

What characteristics of components best enable them to be used to represent diverse and "large-scale" aspects of information processing environments?

- A. ownership of potentially large numbers of model elements
- B. black-box semantics Bports, parts, and interfaces
- C. duality of association ends and attributes

Answer: A

QUESTION 55

What is a structured classifier? A classifier_____.

- A. that must contain parts and connectors
- B. with some/all behavior described by its internal structure
- C. that must have one or more ports
- D. which must have private and/or protected structural features

Answer: B

QUESTION 56

What is true about an InformationItem in UML 2.0?

- A. can have associations
- B. can have generalization
- C. can have features
- D. is not instantiable
- E. is not an abstraction

Answer: D

QUESTION 57

What is NOT possible when a classifier receives a request via one of its ports?

- A. A new port is created on the classifier.
- B. The request does not trigger any behavior and is not forwarded.
- C. The port routes the request to one of a number of parts depending on the content of the request.
- D. The request is forwarded to a part of the classifier.
- E. A behavior of the classifier is invoked.

Answer: A

QUESTION 58

The preconditions of behavioral features of an interface can be specified in what way?

- A. one or more guard conditions of a protocol state machine
- B. the actions of its protocol state machine
- C. the parameters of its protocol state machine
- D. comments attached to the corresponding features
- E. the set of its features

Answer: A

QUESTION 59

What are the underlying semantics of the association between Port and ProtocolStateMachine?

- A. The port must have a required interface whose protocol is specified by the protocol state machine.
- B. The port must have a provided interface whose protocol is specified by the protocol state machine.
- C. The protocol state machine defines the sequencing constraints on the communications across a port.
- C. The class of the object that has the port has to have a behavior that is defined by the protocol state machine.

Answer:

QUESTION 60

OCL expressions may NOT contain which special character or character combinations?

- A. @
- B. ~
- C. >=
- D. ->
- E. .
- F. ..

Answer: B

QUESTION 61

How does OCL identify comments?

- A. -- text
- B. /* text
- C. // text
- D. " text"
- E. 'text'

Answer: B

To Read the [Whole Q&As](#), please purchase the [Complete Version](#) from [Our website](#).

Trying our product !

- ★ **100%** Guaranteed Success
- ★ **100%** Money Back Guarantee
- ★ **365 Days** Free Update
- ★ **Instant Download** After Purchase
- ★ **24x7** Customer Support
- ★ Average **99.9%** Success Rate
- ★ More than **69,000** Satisfied Customers Worldwide
- ★ Multi-Platform capabilities - **Windows, Mac, Android, iPhone, iPod, iPad, Kindle**

Need Help

Please provide as much detail as possible so we can best assist you.

To update a previously submitted ticket:

A green button with a white border and a torn paper effect on the left side, containing the text "Submit A Ticket".

Submit A Ticket

One Year Free Update



Free update is available within One Year after your purchase. After One Year, you will get 50% discounts for updating. And we are proud to boast a 24/7 efficient Customer Support system via Email.

100%

Money Back Guarantee

To ensure that you are spending on quality products, we provide 100% money back guarantee for 30 days from the date of purchase.



Security & Privacy

We respect customer privacy. We use McAfee's security service to provide you with utmost security for your personal information & peace of mind.

Guarantee & Policy | Privacy & Policy | Terms & Conditions

Any charges made through this site will appear as Global Simulators Limited.

All trademarks are the property of their respective owners.

Copyright © 2004-2015, All Rights Reserved.

Get Latest & Actual IT Exam Dumps with VCE and PDF from [Pass4itSure](#).

<https://www.Pass4itSure.com>