

100% Money Back Guarantee

Vendor: OMG

Exam Code: UM0-200

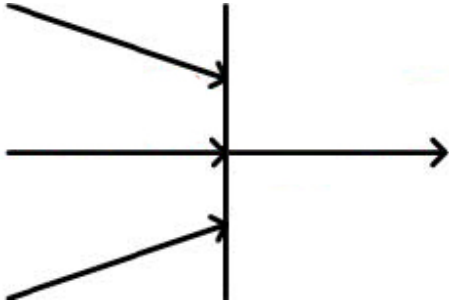
Exam Name: Omg-Certified uml professional intermediate exam

Version: Demo

QUESTION 1

In the exhibit, if the incoming arrows provide three control values, how many control values are provided to the outgoing arrow?

Exhibit:



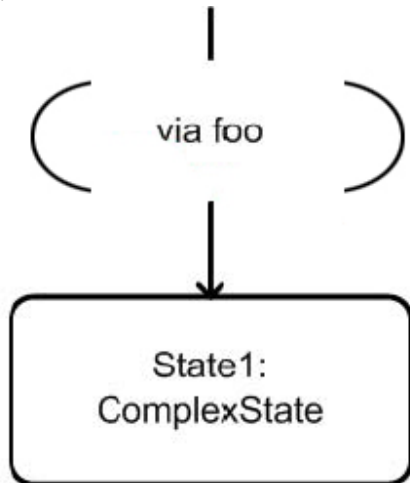
- A. none
- B. one
- C. two
- D. three

Answer: B

QUESTION 2

What does via foo in the exhibit designate?

Exhibit:



- A. the sending of a foo message on the transition
- B. transient pseudostate named foo
- C. a transition terminating on the foo entry point
- D. a Boolean guard equal to the logical value of foo
- E. an action foo associated with the transition

Answer: C

QUESTION 3

Assume component A provides an interface P and requires an interface R. In order for a component B to be substituted for component A, what must be true?

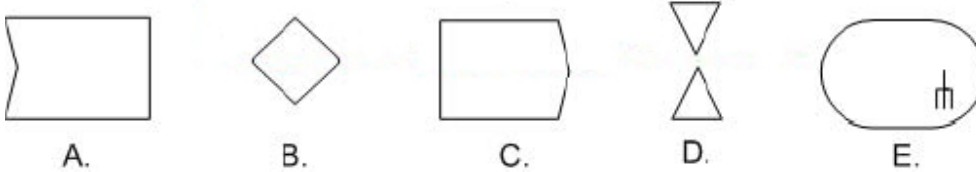
- A. The interface that B requires must be type conformant with respect to the interface that A provides.
- B. The interface that B requires must be type conformant with respect to the interface that A requires, and the interface that B provides must be type conformant with respect to the interface that A provides.
- C. The interface that A requires must be type conformant with respect to the interface that B provides.
- D. Components must be related to each other via a dependency.

Answer: B

QUESTION 4

What symbol depicts a CallBehaviorAction?

Exhibit:



- A. A
- B. B
- C. C
- D. D
- E. E

Answer: E

QUESTION 5

What situation results from performing a CreateObjectAction on an abstract class?

- A. undefined behavior
- B. arbitrary object of one of its subclasses being created
- C. exception being raised
- D. error log entry being created
- E. object of the specified class being created

Answer: A

QUESTION 6

What is NOT true about a roles and role bindings?

- A. A role binding is an association.
- B. A role binding maps a connectable element to a role in a collaboration occurrence.
- C. The same object may play roles in multiple collaborations.
- D. A role typed by an interface specifies a set of features required by a participant in a collaboration.
- E. The same connectable element may be bound to multiple roles in a single collaboration occurrence.

Answer: A

QUESTION 7

What is implied when a transition terminates on the outer border of a composite state that has an initial and a history pseudostate?

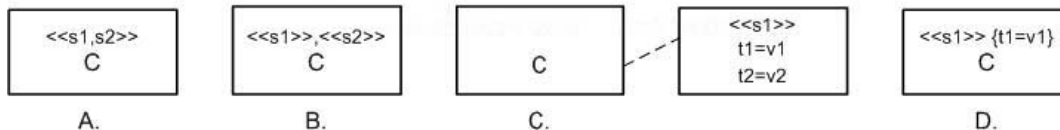
- A. The outgoing transition from the final pseudostate is taken.
- B. The state is not entered.
- C. The outgoing transition from the initial pseudostate is taken.
- D. The outgoing transition from the history pseudostate is taken.

Answer: C

QUESTION 8

What stereotype notation is NOT correct?

Exhibit:



- A. A
- B. B
- C. C
- D. D

Answer: D.

QUESTION 9

In a state machine, what is true for a "do" activity of a state?

- A. starts executing when the state is entered
- B. specifies a condition that must always be true when the state is active
- C. can only appear in a composite state
- D. executes repeatedly as long as the state is active
- E. is equivalent to an entry action of a state

Answer: A

QUESTION 10

What is the notation for gates?

- A. circular disc at the interaction frame
- B. small arrow either into or out from the fragment frame
- C. point on the fragment frame with an optional name
- D. small rectangle on the fragment frame with associated name

Answer: C

QUESTION 11

What represents the deployment target of a deployed artifact?

- A. the location of the deployed artifact
- B. a shared aggregation relationship
- C. a node instance, but never a property instance
- D. the deployed artifact's output data stream

Answer: A

QUESTION 12

Which is true of a provided interface associated with a port?

- A. identifies the services that the object owning the port expects of objects connected via that port
- B. represents an interface that must be defined within the classifier that owns the port
- C. represents an interface that must be defined in the same package in which the classifier owning the port is defined
- D. identifies the services that the object owning the port can offer to other objects connected via that port

Answer: D

QUESTION 13

Which list contains only connectable elements?

- A. behavior, connector end, and port
- B. behavior, port and property
- C. port and connector end
- D. connector end, port and part
- E. property, port, and parameter

Answer: E

QUESTION 14

What situation results from performing a CreateObjectAction on an abstract class?

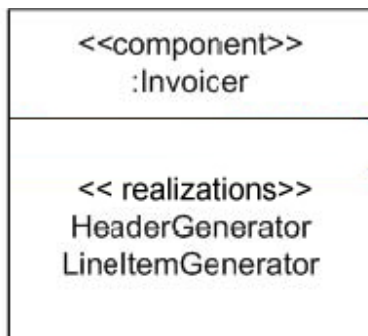
- A. arbitrary object of one of its subclasses being created
- B. object of the specified class being created
- C. undefined behavior
- D. error log entry being created
- E. exception being raised

Answer: C

QUESTION 15

What most accurately describes the semantics modeled by the exhibit?

Exhibit:



- A. HeaderGenerator and LineItemGenerator are Invoicer ports.
- B. An Invoicer component is composed of a HeaderGenerator component and a LineItemGenerator component.
- C. HeaderGenerator and LineItemGenerator realize Invoicer.
- D. Invoicer realizes HeaderGenerator and LineItemGenerator.

Answer: C

QUESTION 16

Where is an interaction constraint placed?

- A. either on the top of an operand or at the bottom of an operand
- B. always at the top of an interaction
- C. above the first event within an interaction operand
- D. directly outside the combined fragment

Answer: C

QUESTION 17

What does a run-to-completion processing for state machines mean?

- A. No other event will be processed until the current event is fully processed.
- B. The thread executing the state machine cannot be pre-empted by the scheduler.
- C. The executions of orthogonal regions are serialized.
- D. Interrupts are disabled while the state machine is running.

Answer: A

QUESTION 18

What situation results from an ApplyFunctionAction?

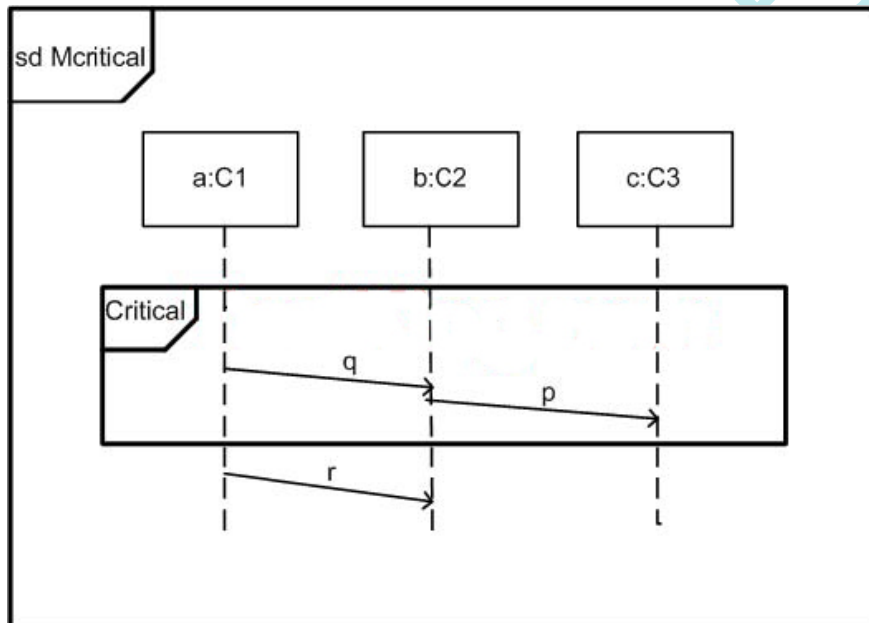
- A. reads objects and produces output values
- B. produces output values
- C. writes objects and produces output values
- D. reads objects, write objects, and produces output values
- E. performs any set of UML actions

Answer: B

QUESTION 19

In the exhibit, what is true for Mcritical?

Exhibit:



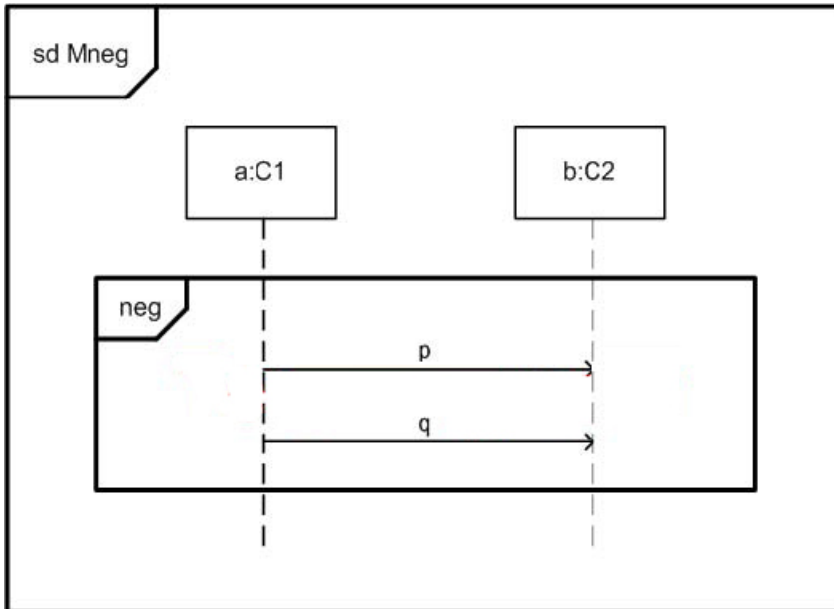
- A. r can be sent whenever p has been sent.
- B. Whenever q and p have been sent, r can be sent.
- C. There are legal traces according to Mcritical where r is absent.
- D. The reception of p must precede sending of r.

Answer: D

QUESTION 20

Assume that !p means sending message p and ?p receiving it. In the exhibit, what is true about Mneg?

Exhibit:



- A. <!p, !q, ?p, ?q> is an invalid trace according to Mneg.
- B. Neither p nor q should be sent between a and b.
- C. p and q should not be sent concurrently from a to b.
- D. <!p, ?q, ?p, !q> is an invalid trace according to Mneg.

Answer: A

QUESTION 21

What is true of a completion transition?

- A. is executed when the state machine is terminated
- B. is only triggered by a completion event
- C. has no trigger defined
- D. is executed when the final state is reached

Answer: B

QUESTION 22

What is the meaning of a required extension?

- A. An instance of the extending stereotype must always be linked to an instance of the extended metaclass.
- B. This extension has a higher priority than the other defined in the same profile.
- C. An instance of the extending stereotype must never be linked to an instance of the extended metaclass.

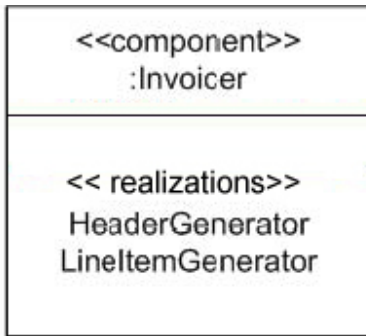
D. The extension must be applied at least once in a model.

Answer: A

QUESTION 23

What most accurately describes the semantics modeled by the exhibit?

Exhibit:



- A. HeaderGenerator and LineItemGenerator realize Invoicer.
- B. An Invoicer component is composed of a HeaderGenerator component and a LineItemGenerator component.
- C. Invoicer realizes HeaderGenerator and LineItemGenerator.
- D. HeaderGenerator and LineItemGenerator are Invoicer ports.

Answer: A

QUESTION 24

What is true about a pseudostate?

- A. a state that can be specialized for different purposes
- B. a state entry or exit point
- C. a specification of a potential state
- D. not a state but a vertex

Answer: D

QUESTION 25

A protocol state machine can be used to describe which aspect of a component?

- A. internals of a component
- B. signal flow among connectors
- C. external contract of a component
- D. configuration of an assembly

Answer: C

QUESTION 26

What is NOT a valid VariableAction?

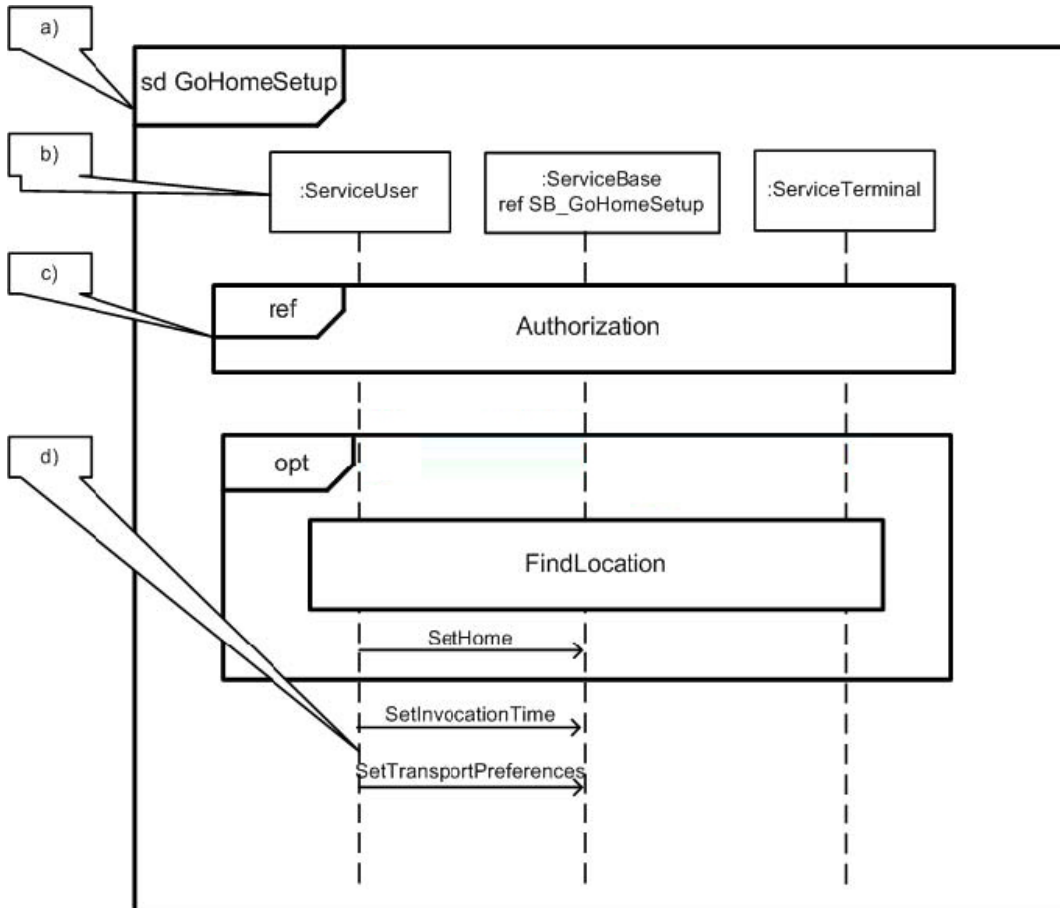
- A. RemoveVariableValueAction
- B. AddVariableValueAction
- C. ClearVariableAction
- D. ReadVariableAction
- E. SetVariableAction

Answer: E

QUESTION 27

In the exhibit, what represents an interaction occurrence?

Exhibit:



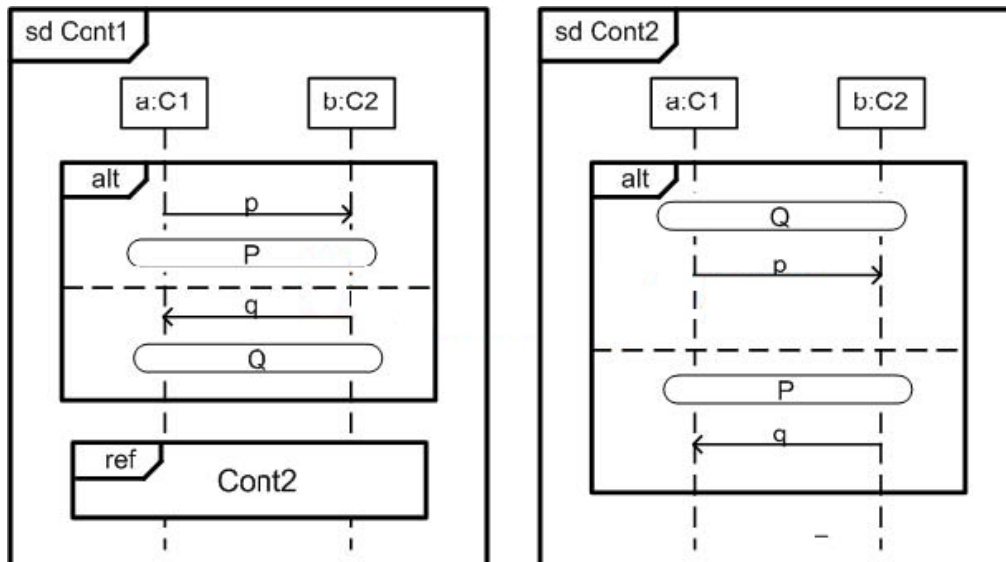
- A. A
- B. B
- C. C
- D. D

Answer: C

QUESTION 28

In the exhibit, what are the valid traces for Cont1?

Exhibit:



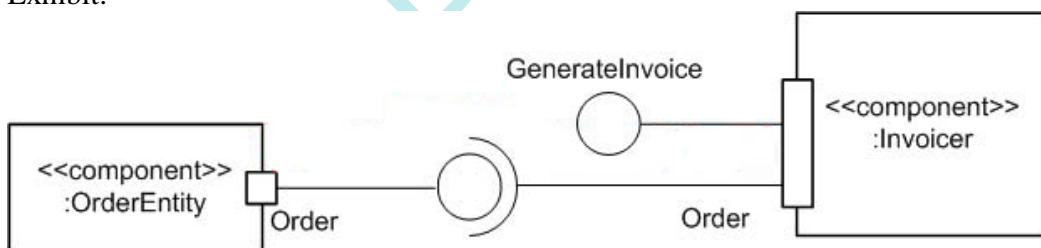
- A. either two p messages or two q messages
- B. either p followed by q or q followed by p
- C. only a p message followed by a q message
- D. any combination of two p messages and two q messages

Answer: B

QUESTION 29

What best describes the semantics modeled by the exhibit?

Exhibit:



- A. The OrderEntity component is part of the internals of the Invoicer component.
- B. The Invoicer has a complex connector that connects the GenerateInvoice interface with the Order interface.
- C. This is an illegal diagram.
- D. The Invoicer has a complex port that provides the interface GenerateInvoice and requires the interface Order.

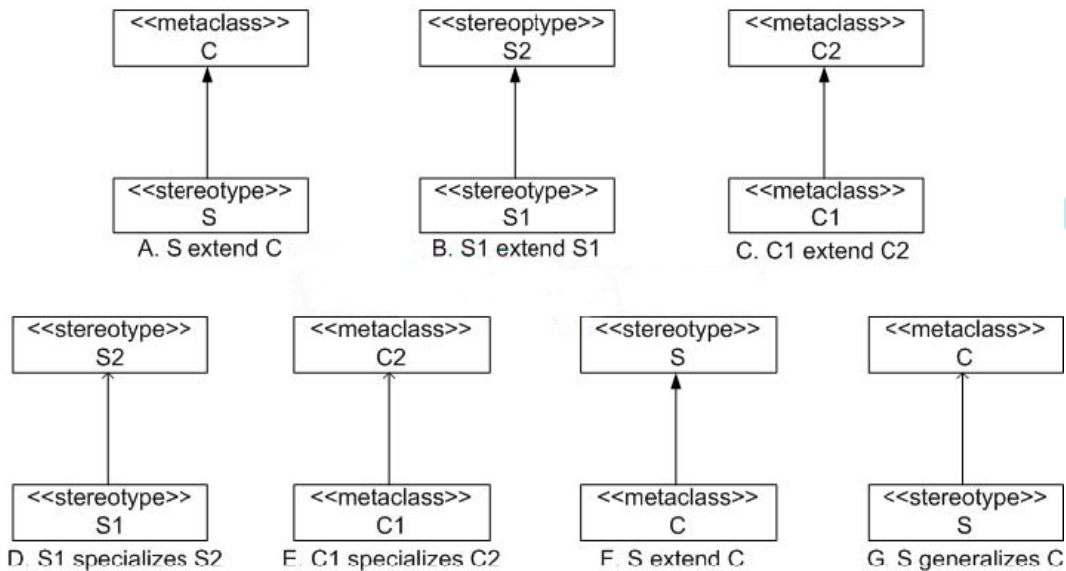
Answer: D

QUESTION 30

Which figures are correct models for extension and generalization/specialization?

(Choose three)

Exhibit:



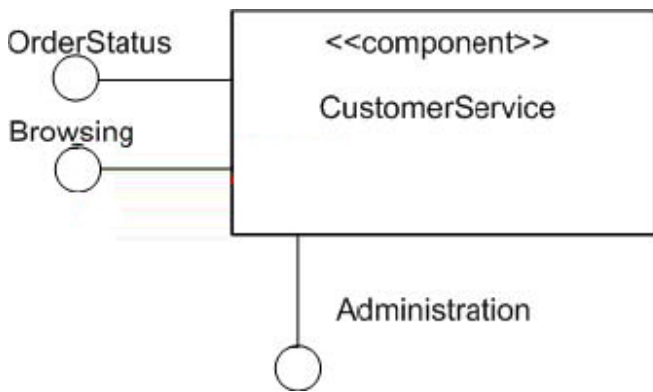
- A. A
- B. B
- C. C
- D. D
- E. E
- F. F
- G. G

Answer: A.D.E

QUESTION 31

Refer to the exhibit. What is the significance of the fact that the Administration interface symbol extends downward rather than leftward?

Exhibit:



- A. The interface is the primary provided interface for the component.
- B. The interface is not publicly visible on the component.
- C. There is no significance.
- D. The interface is the primary interface for the component.
- E. The interface cannot be provided via a port.
- F. The interface does not require a delegation connector.

Answer: C

QUESTION 32

To what does an internal structure of a class refer?

- A. the decomposition of that class in terms of interconnected parts
- B. the set of structural features of that class
- C. the inheritance structure of that class
- D. the set of nested classifiers of that class
- E. class and associations owned by that class

Answer: A

QUESTION 33

When an object invokes a ReadSelfAction, what will it retrieve?

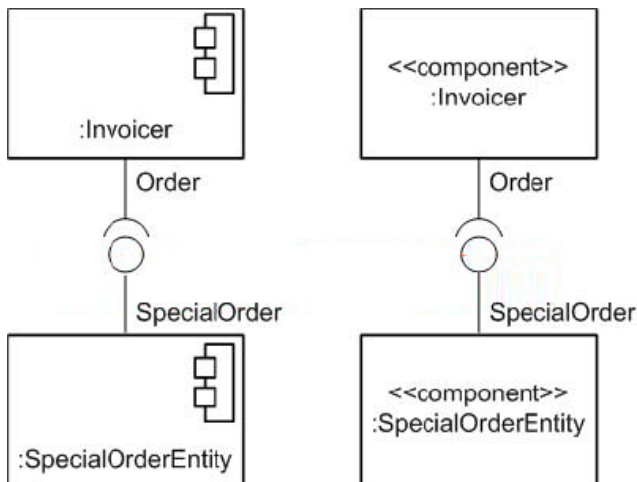
- A. attribute values for the invoking object
- B. invoking object
- C. attribute values and links for the invoking object
- D. class name of the invoking object
- E. name of the invoking activity

Answer: D

QUESTION 34

What is the semantic difference between the two figures in the exhibit?

Exhibit:



- A. One is a white-box view, while the other is a black-box view.
- B. One is a deployment diagram, while the other is a class diagram.
- C. There is no semantic difference.
- D. One is a UML 2.0 diagram, while other is a UML 1.5 diagram.

Answer: C

QUESTION 35

What kind of relationship is an extension in UML 2.0?

- A. generalization
- B. dependency
- C. association
- D. reification

Answer: C

QUESTION 36

What is true about guards on interaction operands?

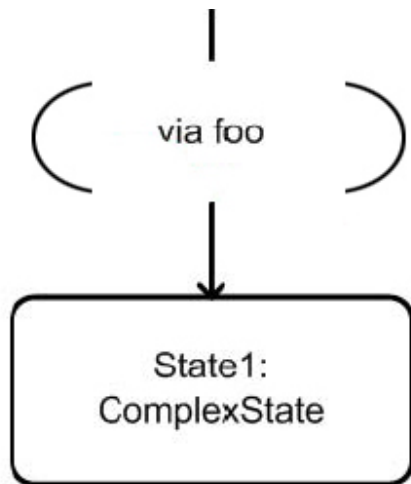
- A. should not refer to any dynamic variables, i.e., to attributes of the lifelines
- B. must only cover one lifeline, namely the one lifeline having the first event occurrence of the interaction operand
- C. must always cover all lifelines covered by the operand
- D. must cover the same lifelines on all interaction operands within one combined fragment

Answer: B

QUESTION 37

What does via foo in the exhibit designate?

Exhibit:



- A. an action foo associated with the transition
- B. transient pseudostate named foo
- C. a transition terminating on the foo entry point
- D. a Boolean guard equal to the logical value of foo
- E. the sending of a foo message on the transition

Answer: C

QUESTION 38

Why are profiles NOT a first class extension mechanism?

- A. They do not allow for modifying existing metamodels.
- B. They do not permit customizing for domains, platforms, and methods.
- C. They permit removing constraints that apply to existing metamodels.
- D. They do not allow for modifying existing stereotypes.

Answer: A

QUESTION 39

What must be true for a connector to be well formed if a delegation connector delegates to more than one target port?

- A. The interfaces of the target ports must have no features in common.
- B. The interface of at least one of the target ports must be signature compatible with the interface that is the type of the source port.
- C. The interface of each of the target ports must be signature compatible with the interface that is the type of the source port.
- D. The union of the interfaces of the target ports must be signature compatible with the interface that is the type of the source port.

Answer: D

QUESTION 40

A component may legally participate in which relationship(s)?

- A. associations and generalizations
- B. dependencies, associations, and generalizations
- C. dependencies and generalizations
- D. dependencies

Answer: B

QUESTION 41

Which must be true in order to use a delegation connector to connect two components?

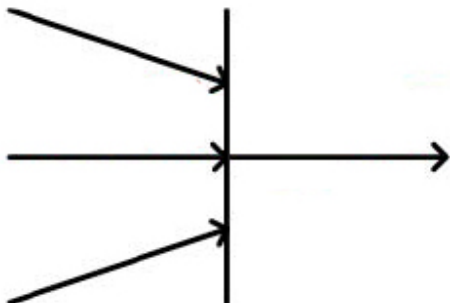
- A. The components must be related to each other via a dependency.
- B. One component must be part of the internal realization of the other component.
- C. The components must have complex ports.
- D. One component must be a subtype of the other.

Answer: B

QUESTION 42

In the exhibit, if the incoming arrow provides a value, how many of the outgoing arrows will be given values?

Exhibit:



- A. three
- B. one
- C. two
- D. none

Answer: A

QUESTION 43

What will be deleted when performing a DestroyObjectAction on an object that participates in a composition association with many components?

- A. component objects
- B. object, all its links, and all linked objects

- C. object and all its links
- D. object and all its component objects
- E. object

Answer: E

QUESTION 44

How can the internals of a component be presented?

- A. using a complex component connector
- B. in a compartment of the component box or via boxes nested within the component box
- C. in a compartment of the component box or a component requires port
- D. component provides port or a component requires port

Answer: B

QUESTION 45

How many bar shapes can appear in a well-defined activity diagram?

- A. exactly two
- B. an odd number
- C. an even number
- D. any number

Answer: D

QUESTION 46

What is true when deferrable triggers of a state specify triggering events?

- A. are of lower priority
- B. will be consumed after the state is exited
- C. are ignored in that state
- D. will be consumed when a state in which they are no longer deferred is reached

Answer: D

QUESTION 47

For what does an interaction operator define semantics?

- A. a particular message
- B. a particular combined fragment
- C. a particular interaction fragment
- D. a particular interaction

Answer: B

QUESTION 48

What relationships are used to wire (i.e., fully interconnect) components together so that they are interoperable?

- A. realization relationships and associations
- B. associations and connectors
- C. dependencies and connectors
- D. dependencies, connectors, and realization relationships

Answer: C

QUESTION 49

What may a profile NOT own?

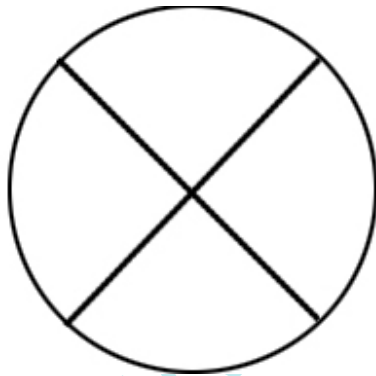
- A. metaclasses
- B. stereotypes
- C. new associations
- D. associations that redefine existing associations

Answer: C

QUESTION 50

What does a circle with an X in it (as depicted in the exhibit) represent inside UML 2.0 activity diagrams?

Exhibit:



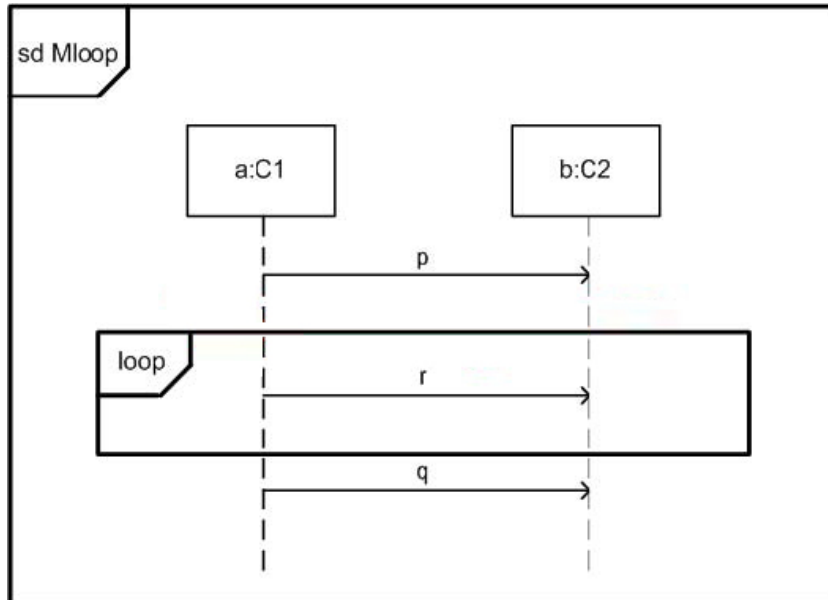
- A. flow final nodes
- B. merges
- C. decisions
- D. activity final nodes
- E. forks
- F. initial nodes
- G. joins

Answer: A

QUESTION 51

Assume !p denotes sending of p, ?p the reception of p. In the exhibit, what traces are valid? (Choose three)

Exhibit:



- A. <!p, ?p, !q, ?q>
- B. <!p, ?p, !r, ?r, ?r, !q, ?q>
- C. <!p, !r, ?p, ?r, !r, !q, ?r, ?q>
- D. <!p, !r, ?p, ?r, !r, ?r, !r, ?r, !q, ?q>
- E. <!p, ?p, !r, ?r, !r, !q, ?r, ?q>
- F. <!p, !r, ?p, ?r, !r, ?r, !r, ?q, !r, ?q>

Answer: A,B,D

QUESTION 52

What kind of class is the Device class?

- A. Hardware
- B. ExecutionEnvironment
- C. Association
- D. Installation
- E. Node

Answer: E

QUESTION 53

In the exhibit, how many of the arrows must provide values for the outgoing arrow to be given a value?

Exhibit:

To Read the [Whole Q&As](#), please purchase the [Complete Version](#) from [Our website](#).

Trying our product !


- ★ **100%** Guaranteed Success
- ★ **100%** Money Back Guarantee
- ★ **365 Days** Free Update
- ★ **Instant Download** After Purchase
- ★ **24x7** Customer Support
- ★ Average **99.9%** Success Rate
- ★ More than **69,000** Satisfied Customers Worldwide
- ★ Multi-Platform capabilities - **Windows, Mac, Android, iPhone, iPod, iPad, Kindle**

Need Help

Please provide as much detail as possible so we can best assist you.

To update a previously submitted ticket:



 One Year Free Update Free update is available within One Year after your purchase. After One Year, you will get 50% discounts for updating. And we are proud to boast a 24/7 efficient Customer Support system via Email.	 Money Back Guarantee To ensure that you are spending on quality products, we provide 100% money back guarantee for 30 days from the date of purchase.	 Security & Privacy We respect customer privacy. We use McAfee's security service to provide you with utmost security for your personal information & peace of mind.
---	---	--

Guarantee & Policy | Privacy & Policy | Terms & Conditions

Any charges made through this site will appear as Global Simulators Limited.

All trademarks are the property of their respective owners.