



TEAS-SECTION-2^{Q&As}

Test of Essential Academic Skills - Sentence Correction

Pass TEAS TEAS-SECTION-2 Exam with 100% Guarantee

Free Download Real Questions & Answers **PDF** and **VCE** file from:

<https://www.pass4itsure.com/teas-section-2.html>

100% Passing Guarantee
100% Money Back Assurance

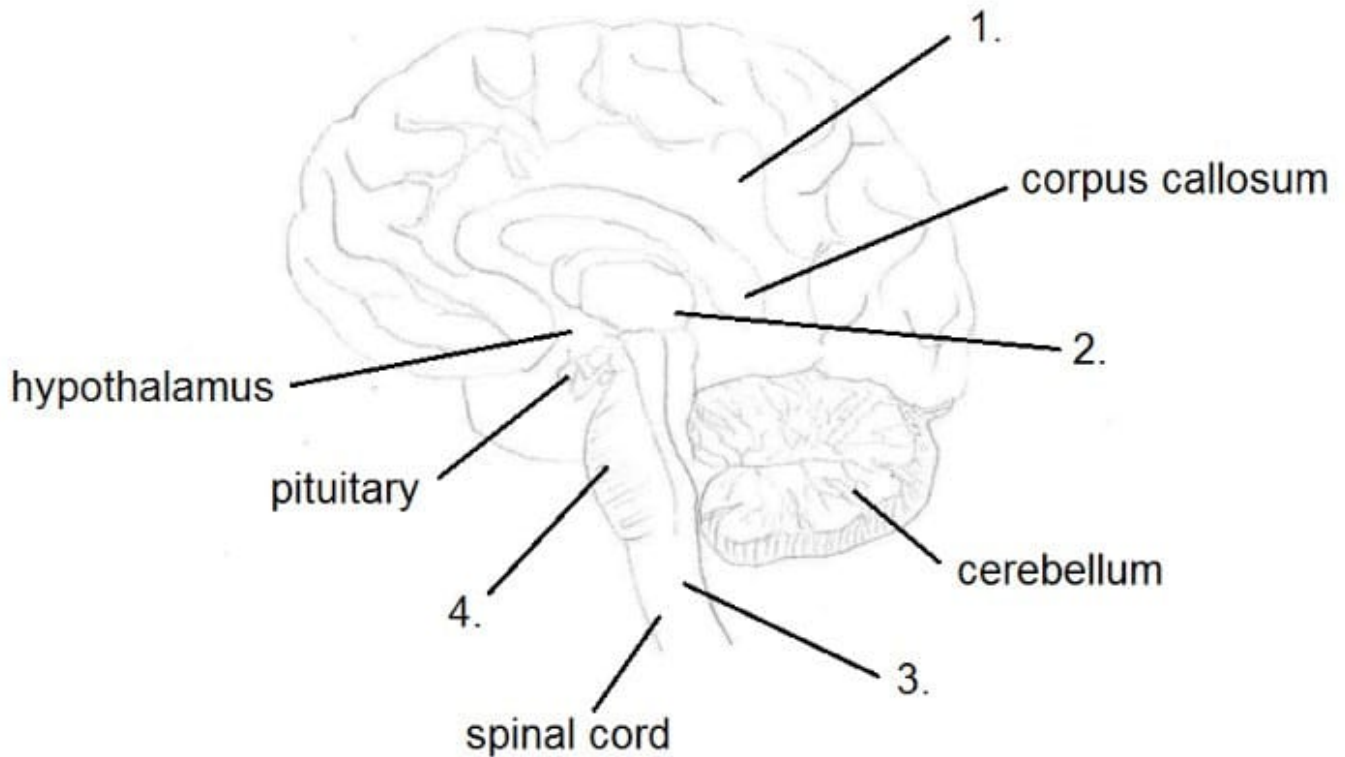
Following Questions and Answers are all new published by TEAS
Official Exam Center

-  **Instant Download** After Purchase
-  **100% Money Back** Guarantee
-  **365 Days** Free Update
-  **800,000+** Satisfied Customers





QUESTION 1



In this diagram of the brain, some of the labels are missing.

What should the labels be?

- A. 1. cerebral cortex, 2. thalamus, 3. medulla oblongata, 4. pons
- B. 1. cerebellum, 2. grey matter, 3. thalamus, 4. hindbrain
- C. 1. forebrain, 2. midbrain, 3. brain stem, 4. pons
- D. 1. hippocampus, 2. fornix, 3. midbrain, 4. pons

Correct Answer: A

QUESTION 2

Which of these statements is true for boiling, but not true for evaporation?

- A. Gas forms at the surface of the liquid.
- B. The warmer the liquid is, the faster the process.
- C. It takes place at a specific temperature.
- D. The larger the surface area of liquid, the faster the process.



Correct Answer: C

QUESTION 3

When does the nuclear division of somatic cells take place during cellular reproduction?

- A. mitosis
- B. meiosis
- C. cytokinesis
- D. interphase

Correct Answer: A

The nuclear division of somatic cells takes place during mitosis.

QUESTION 4

Which valve is found between the left atrium and the left ventricle?

- A. the tricuspid valve
- B. the pulmonary valve
- C. the aortic valve
- D. the mitral valve

Correct Answer: D

QUESTION 5

What does the sympathetic portion of the autonomic nervous system control?

- A. breathing
- B. the "fight or flight" response to threats
- C. shivering when cold
- D. swallowing

Correct Answer: B

QUESTION 6

Cardiac muscles exhibit which of these features?



- A. striated, involuntary, intercalated discs not present
- B. striated, involuntary, intercalated discs present
- C. striated, voluntary, intercalated discs present
- D. unstriated, involuntary, intercalated discs present

Correct Answer: B

QUESTION 7

Which of these make up a molecule of fat?

- A. three molecules of fatty acid and one molecule of glycerol
- B. one glycerol molecule and three stearic acid molecules
- C. three molecules of glycerol and one molecule of fatty acid
- D. one carbon, one hydrogen, and one oxygen molecule

Correct Answer: A

QUESTION 8

Which of the following is an example of a tissue?

- A. xylem
- B. liver
- C. mammal
- D. hamstring

Correct Answer: A

A xylem is an example of a tissue. A liver is an organ, a mammal is a type of organism, and a hamstring is a muscle.

QUESTION 9

Fill in the blanks:

Enzymes are _____ that work best at _____ pH or temperature.

- A. biological catalysts, optimum
- B. organic catalysts, minimum
- C. inorganic catalysts, maximum



D. chemical substances, moderate

Correct Answer: A

QUESTION 10

What happens when a piece of zinc is placed in a copper(II) sulphate solution?

- A. Zinc displaces copper from copper(II) sulphate solution. The original blue color of the solution persists.
- B. Sulphur dioxide is liberated.
- C. Zinc displaces copper from copper(II) sulphate solution.
- D. No reaction occurs because zinc is less reactive metal than copper.

Correct Answer: C

QUESTION 11

Phalanges are bones present in which parts of the body?

- A. fingers and toes
- B. cranium/skull
- C. fingers only
- D. ears

Correct Answer: A

QUESTION 12

Fill in the blank:

The hepatic portal vein carries _____, _____ blood from the _____ to the _____.

- A. deoxygenated, nutrient-rich, intestines, liver
- B. deoxygenated, nutrient-rich, liver, stomach
- C. deoxygenated, nutrient-poor, liver, intestines
- D. oxygenated, nutrient-rich, intestines, liver

Correct Answer: A

QUESTION 13



	B	g
B	BB	Bg
g	Bg	gg

What is the possibility that the offspring produced will have brown eyes? B = alleles for brown eyes; g = alleles for green eyes

- A. 100%
- B. 75%
- C. 50%
- D. 25%

Correct Answer: B

Dominant genes are always expressed when both alleles are dominant (BB) or when one is dominant and one is recessive (Bg).

In this case, 3/4 or 75% will have brown eyes.

QUESTION 14

A large amount of energy is produced in the center of sun by which phenomenon?

- A. chemical reaction
- B. nuclear fission
- C. nuclear fusion
- D. radioactive decay

Correct Answer: C

QUESTION 15

A ball is tied to a pole with a rope and is moving in a circle with constant speed.

Which of these statements about the ball is true?

- A. Force is acting away from the center of circle.
- B. Force is acting at a tangent to the circle.
- C. There is no acceleration.
- D. There is force acting toward the center of circle.



Correct Answer: D

[Latest TEAS-SECTION-2 Dumps](#)

[TEAS-SECTION-2 PDF Dumps](#)

[TEAS-SECTION-2 VCE Dumps](#)