



ST0-91W^{Q&As}

Symantec NetBackup 7.0 for Windows(STS)

Pass Symantec ST0-91W Exam with 100% Guarantee

Free Download Real Questions & Answers **PDF** and **VCE** file from:

<https://www.pass4itsure.com/st0-91w.html>

100% Passing Guarantee
100% Money Back Assurance

Following Questions and Answers are all new published by Symantec
Official Exam Center

- ⚙️ **Instant Download** After Purchase
- ⚙️ **100% Money Back** Guarantee
- ⚙️ **365 Days** Free Update
- ⚙️ **800,000+** Satisfied Customers



**QUESTION 1**

An organization has a library with ten drives on the Storage Area Network (SAN). The library can be reached by all five media servers. Currently, two drives are assigned per media server. Which option or agent can be used to allow each media server to use all drives on the SAN?

- A. NetBackup Virtual Tape Option
- B. Shared Storage Option
- C. NetBackup OpenStorage
- D. NetBackup SAN Media Server

Correct Answer: B

QUESTION 2

A Symantec NetBackup 7.0 master server is backing up three clients over a slow WAN link to a single tape drive with multiplexing set to 1 for the storage unit. The WAN link is prone to periodic network interruptions outside of the administrator's control. What should the administrator do to ensure that a backup of these clients can be completed successfully in the shortest time period?

- A. enable the "Perform snapshot backups" attribute to ensure that the backups can be completed
- B. enable the "Checkpoint" attribute on the policy to ensure the backups can be completed
- C. choose the "Enable Granular Recovery" attribute so that the client splits the data into smaller chunks before sending it to the storage unit
- D. configure the bandwidth settings in host properties of the master server to allow the slow- running backups to complete

Correct Answer: B

QUESTION 3

By default, how often does the Schedule Backup Attempt property cause Symantec NetBackup 7.0 to retry backups?

- A. once in 8 hours
- B. twice in 12 hours
- C. once in 24 hours
- D. twice in 24 hours

Correct Answer: B



QUESTION 4

What is the maximum number of characters supported for a Media ID?

- A. 6
- B. 8
- C. 10
- D. 16

Correct Answer: A

QUESTION 5

Which two statements are true about duplication in Symantec NetBackup 7.0? (Select two.)

- A. Duplications may be performed without using NetBackup Vault.
- B. In any multiple media server environment, the source and destination media must reside on the same media server.
- C. An entire tape is copied block by block from source to destination.
- D. Unexpired images can be duplicated from source to destination.
- E. Due to formatting concerns, tape drives used in the duplication must be of the same media type.

Correct Answer: AD

QUESTION 6

Which statement best describes your ability to modify and maintain the Symantec NetBackup 7.0 configuration?

- A. I can modify and maintain the Symantec NetBackup 7.0 configuration WITHOUT assistance.
- B. I can modify and maintain the Symantec NetBackup 7.0 configuration with MINIMAL assistance (e.g., referring to documentation).
- C. I can modify and maintain the Symantec NetBackup 7.0 configuration with SIGNIFICANT assistance (e.g., calling support or working with a mentor).
- D. I am familiar with how to modify and maintain the Symantec NetBackup 7.0 configuration but have NO field experience.
- E. I am NOT familiar with how to modify and maintain the Symantec NetBackup 7.0 configuration.

Correct Answer: C

QUESTION 7



A company has decided to automatically allocate all media to any volume pool on demand. Which two steps must be performed to meet this requirement? (Select two.)

- A. create volume pools as required, but do not add any volumes to the pools
- B. if a scratch pool exists, delete it and assign the volumes to other pools
- C. create barcode rules to automatically allocate volumes
- D. define a scratch pool and add all of the volumes to it
- E. delete all volume pools prior to adding media

Correct Answer: AD

QUESTION 8

A company has decided to install Symantec NetBackup 7.0 in a cluster.

What are two prerequisites for this installation? (Select two.)

- A. A virtual host name and IP address must be configured.
- B. Two cross-over cables must be installed.
- C. Replication must be installed.
- D. The shared disk must be accessible to all nodes.
- E. The installation DVD must be shared across all nodes.

Correct Answer: AD

QUESTION 9

Which section in the Symantec NetBackup 7.0 administration console provides visibility into the backup image database?

- A. Media
- B. Catalog
- C. Activity Monitor
- D. Host Properties

Correct Answer: B

QUESTION 10

An administrator needs to ensure that a restore job is initiated at 3 a.m. tomorrow morning. The administrator will leave



the data center tonight at 9 p.m. and will only have access to the system after 6

a.m.

tomorrow morning. What should the administrator do to initiate the job at 3 a.m.?

A.

use the "Go into effect at" setting on the restore job to start the job at 3 a.m.

B.

schedule a task to automatically start a bprestore command at 3 a.m.

C.

initiate and then suspend the restore job, then select "resume at" and select "in 6 hours"

D.

create a restore policy that goes active at 3 a.m.

Correct Answer: B

QUESTION 11

When performing a catalog backup, the Symantec NetBackup relational database (NBDB) is copied to a temporary location before being backed up. On a Windows master server, where is the temporary location for the NBDB files?

A. install_path\NetBackupDB\staging

B. install_path\NetBackupDB\temp

C. install_path\NetBackupDB\DbExt\Catalog

D. install_path\NetBackupDB\data

Correct Answer: A

QUESTION 12

Which action must be performed to add new media to a tape library?

A. compare contents with volume

B. update volume configuration

C. import media

D. move Volumes dialog box

Correct Answer: B



QUESTION 13

Which information does the Activity Monitor display?

- A. volume groups
- B. queued jobs
- C. administrative console reports
- D. media logs

Correct Answer: B

QUESTION 14

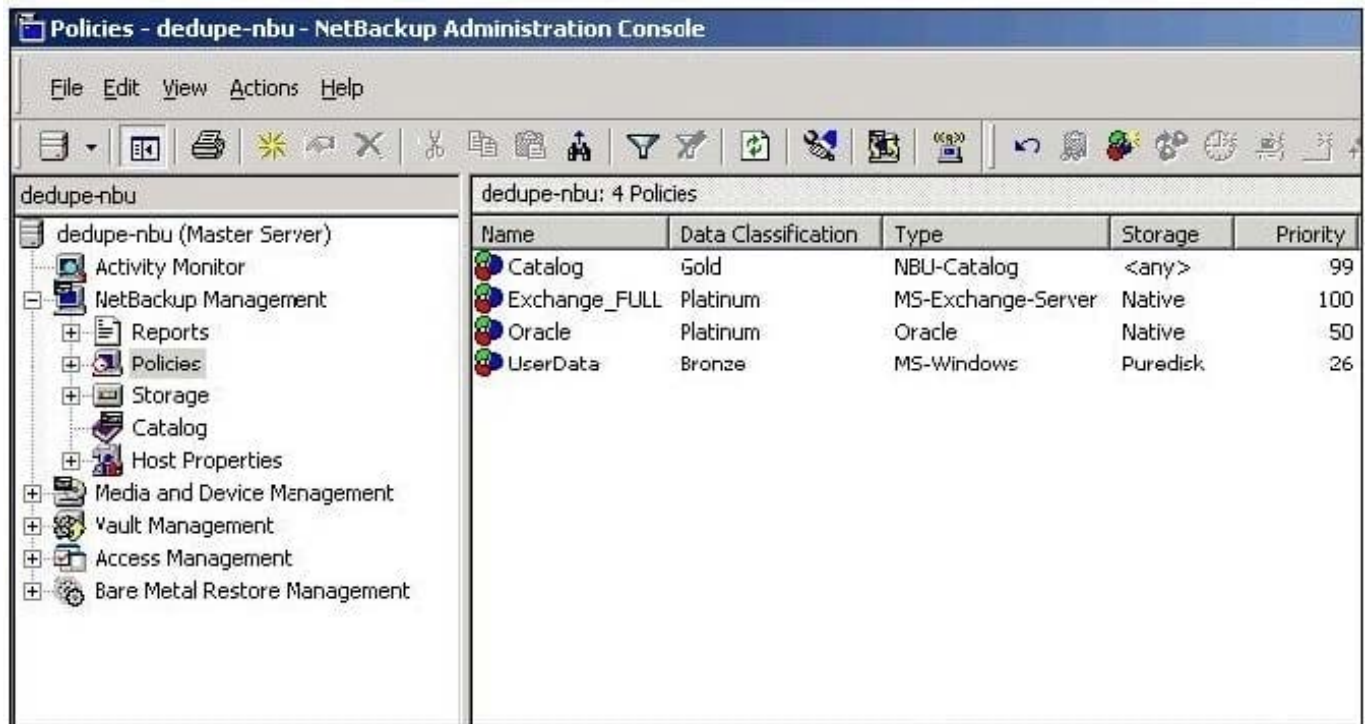
In which two areas of Symantec NetBackup 7.0 is multiplexing configured? (Select two.)

- A. master server host properties
- B. storage unit group configuration
- C. policy schedules attributes
- D. storage unit configuration
- E. media server host properties

Correct Answer: CD

QUESTION 15

Refer to the exhibit.



An administrator must create a new backup policy for a critical application. The administrator needs to ensure the backup job is assigned the first available resource and the backup images on disk are retained as long as possible. How should the new policy be configured?

- A. Data Classification set to Platinum and Priority set to 101
- B. Data Classification set to Silver and Storage set to "any"
- C. Data Classification set to Gold and Priority set to 999
- D. Data Classification set to Platinum and Policy Type set to Critical

Correct Answer: A

[ST0-91W VCE Dumps](#)

[ST0-91W Practice Test](#)

[ST0-91W Braindumps](#)