



OMG-OCUP-100^{Q&As}

OMG-Certified UML Professional Fundamental

Pass OMG OMG-OCUP-100 Exam with 100% Guarantee

Free Download Real Questions & Answers **PDF** and **VCE** file from:

<https://www.pass4itsure.com/omg-ocup-100.html>

100% Passing Guarantee
100% Money Back Assurance

Following Questions and Answers are all new published by OMG
Official Exam Center

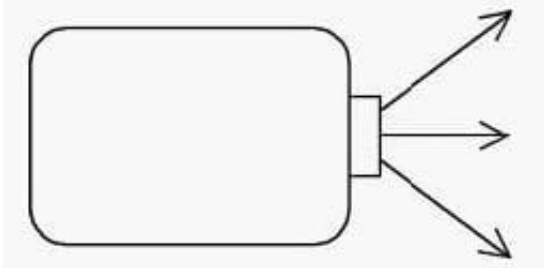
-  **Instant Download** After Purchase
-  **100% Money Back** Guarantee
-  **365 Days** Free Update
-  **800,000+** Satisfied Customers





QUESTION 1

If the rectangle in the exhibit has one value, how many of the arrows will be given the value?

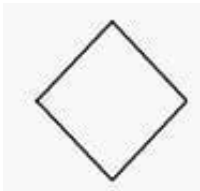


- A. none
- B. one
- C. two
- D. three

Correct Answer: B

QUESTION 2

What does a diamond shape (as depicted in the exhibit) represent in UML 2.0 activity diagrams? (Choose two)

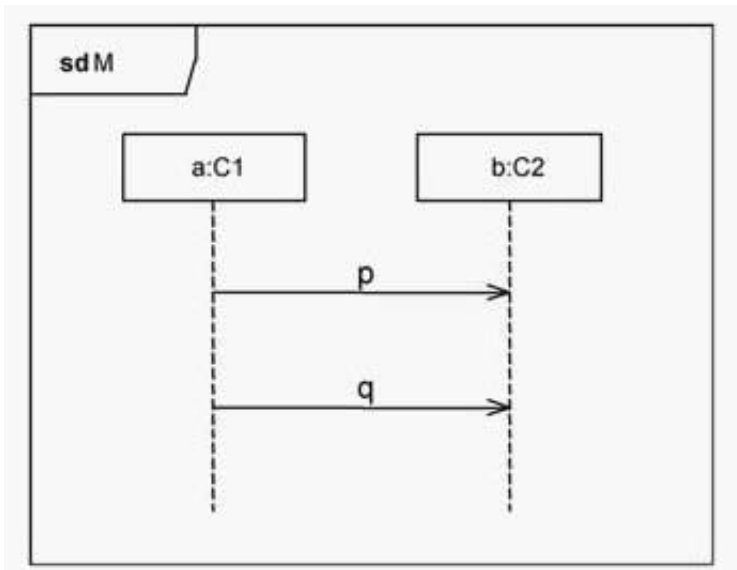


- A. joins
- B. forks
- C. merges
- D. decisions
- E. initial nodes
- F. flow final nodes
- G. activity final nodes

Correct Answer: CD

**QUESTION 3**

Which element in the exhibit denote a lifeline?



- A. M
- B. p
- C. q
- D. C1
- E. b:C2

Correct Answer: E

QUESTION 4

What statements are true about implementation relationships? (Choose two)

- A. A classifier may only implement one interface.
- B. An interface may implement multiple classifiers.
- C. A classifier implementing an interface conforms to its contract.
- D. The set of interfaces implemented by a classifier are its required interfaces.
- E. The set of interfaces implemented by a classifier are its provided interfaces.

Correct Answer: CE

QUESTION 5



What statements are true about the endency? Choose two)

- A. denotes runtime substitutability requiring specialization
- B. denotes runtime substitutability not requiring specialization
- C. implies inheritance of structure and compliance to publicly available contracts
- D. implies neither inheritance of structure nor compliance to publicly available contracts
- E. does not imply inheritance of structure, but implies compliance to publicly available contracts

Correct Answer: BE

QUESTION 6

Which kind of behavior diagram is NOT a UML 2.0 diagram?

- A. activity diagram
- B. dataflow diagram
- C. sequence diagram
- D. interaction diagram
- E. communication diagram

Correct Answer: B

QUESTION 7

When a customer uses a service to order books, the service contacts a commercial credit card validation service, an address verification service, and an internal client database. Assuming the Order Books process is modeled as one use case at the system level, which actors would there be?

- A. Customer
- B. Customer, Client Database
- C. Customer, Credit Card Validation Service
- D. Customer, Credit Card Validation Service, Address Verification Service
- E. Customer, Credit Card Validation Service, Address Verification Service, Client Database

Correct Answer: D

QUESTION 8

What are the components of diagram frames? (Choose three)



- A. date
- B. heading
- C. content area
- D. author designation
- E. round-cornered frame
- F. square-cornered frame

Correct Answer: BCF

QUESTION 9

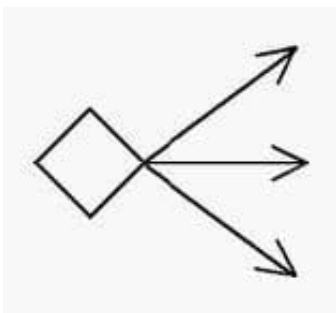
Ten employees in a department can submit an expense form to have their expenses repaid. manager is required to approve the expense forms. many actors have we described?

- A. 0 actors
- B. 1 actor
- C. 2 actors
- D. 10 actors
- E. 11 actors
- F. 12 actors

Correct Answer: C

QUESTION 10

How many of the three arrows outgoing from the diamond shape (as depicted in the exhibit) will be given values at one time in a well-defined activity diagram?



- A. none
- B. one

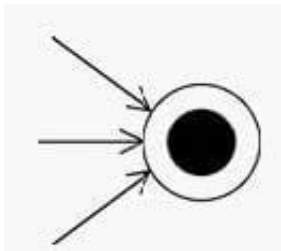


- C. two
- D. three

Correct Answer: B

QUESTION 11

A circle with a solid circle inside and three incoming arrows is depicted in the exhibit. many of the arrows must provide values for the circle to have an effect?

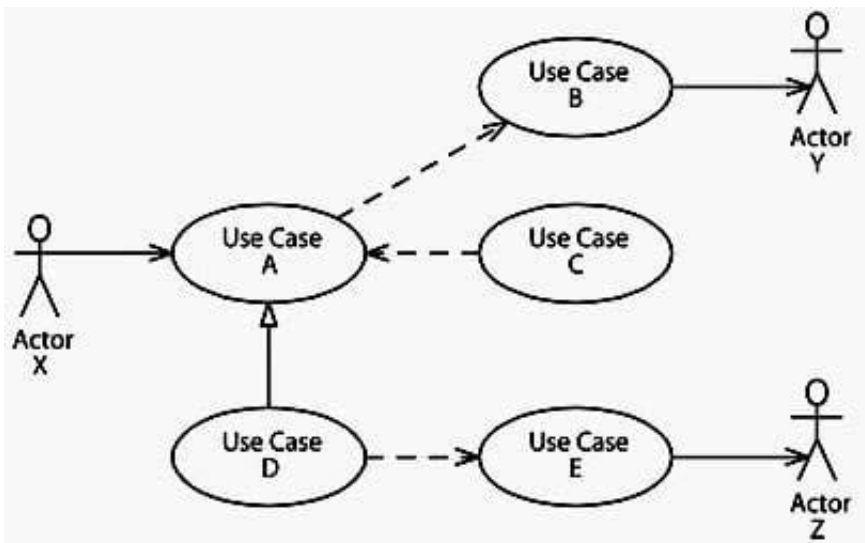


- A. none
- B. one
- C. two
- D. three

Correct Answer: B

QUESTION 12

In the exhibit, which actors are involved in Use Case E?



- A. Actor Z



- B. Actor X and Actor Z
- C. Actor Y and Actor Z
- D. Actor X, Actor Y, and Actor Z

Correct Answer: B

QUESTION 13

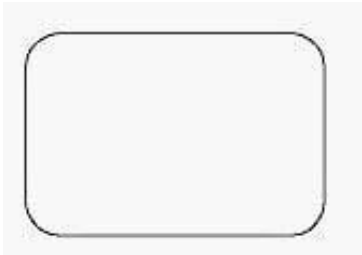
What is true about a comment in UML 2.0? (Choose two)

- A. is shown as a note symbol
- B. must be attached to at most one element
- C. contains only machine-readable symbols
- D. can be attached to more than one element
- E. connections are always shown with a dashed line

Correct Answer: AD

QUESTION 14

What does the symbol in the exhibit represent inside UML 2.0 activity diagrams?



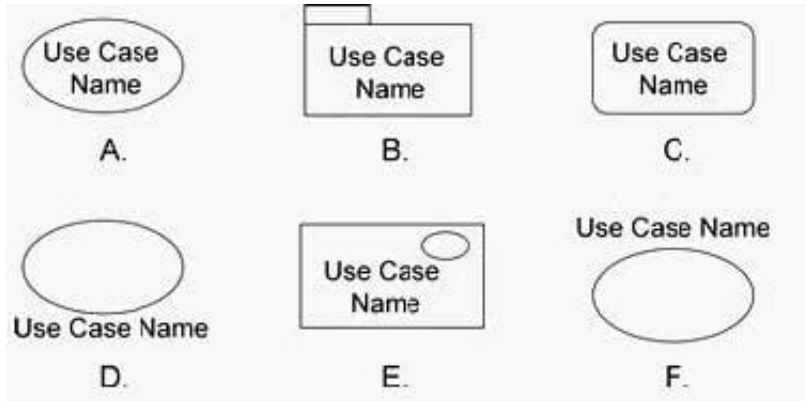
- A. state
- B. action
- C. activity
- D. behavior
- E. object node

Correct Answer: B

QUESTION 15



What shapes normally represent a use case? (Choose three) A. Option A



B. Option B

C. Option C

D. Option D

E. Option E

F. Option F

Correct Answer: ADE

[OMG-OCUP-100 PDF Dumps](#)

[OMG-OCUP-100 Practice Test](#)

[OMG-OCUP-100 Braindumps](#)