



MS-302^{Q&As}

Microsoft 365 Teamwork Administrator Certification Transition

Pass Microsoft MS-302 Exam with 100% Guarantee

Free Download Real Questions & Answers **PDF** and **VCE** file from:

<https://www.pass4itsure.com/ms-302.html>

100% Passing Guarantee
100% Money Back Assurance

Following Questions and Answers are all new published by Microsoft
Official Exam Center

- ⚙ **Instant Download** After Purchase
- ⚙ **100% Money Back** Guarantee
- ⚙ **365 Days** Free Update
- ⚙ **800,000+** Satisfied Customers



**QUESTION 1**

Your company has a Microsoft 365 subscription.

The company purchases the new add-in all for Microsoft Excel. The add-in adds several commands to the Home tab in Excel.

You need to deploy the add-in to all users without requiring the users to manually add the add-in in Excel.

Solution: From the Microsoft 365 admin center, you configure Integrated Apps.

Does this meet the goal?

A. Yes

B. No

Correct Answer: B

Instead, from the App Catalog you upload the add-in to Apps for Office.

References: <https://docs.microsoft.com/en-us/office/dev/add-ins/publish/publish-task-pane-and-content-add-ins-to-an-add-in-catalog>

QUESTION 2**HOTSPOT**

Your company has a SharePoint Server farm.

The human resources (HR) department at the company has a site that has a URL of <http://contoso.com/hr>.

You need to back up the HR department site every eight hours by using PowerShell. The backup must complete as quickly as possible.

How should you complete the command? To answer, select the appropriate options in the answer area;

NOTE: Each correct selection is worth one point.

Hot Area:

<div>▼</div> <div>Backup-SPFarm</div> <div>Copy-Item</div> <div>Copy-SPSite</div> <div>Export-SPWeb</div>	<code>http://contoso.com/hr -Path d:\backup</code>	<div>▼</div> <div>-NoFileCompression</div> <div>-PreserveSiteId</div> <div>-RetainPermissions</div>	<div>▼</div> <div>-NoLogFile</div> <div>-SkipPolicies</div> <div>-TargetUri http://site</div>
---	--	---	---

Correct Answer:



▼	http://contoso.com/hr -Path d:\backup	▼	▼
Backup-SPFarm		NoFileCompression	NoLogFile
Copy-Item		-PreserveSitelink	-SkipPolicies
Copy-SPSite		-RetainPermissions	-TargetUrl http://site
Export-SPWeb			

QUESTION 3

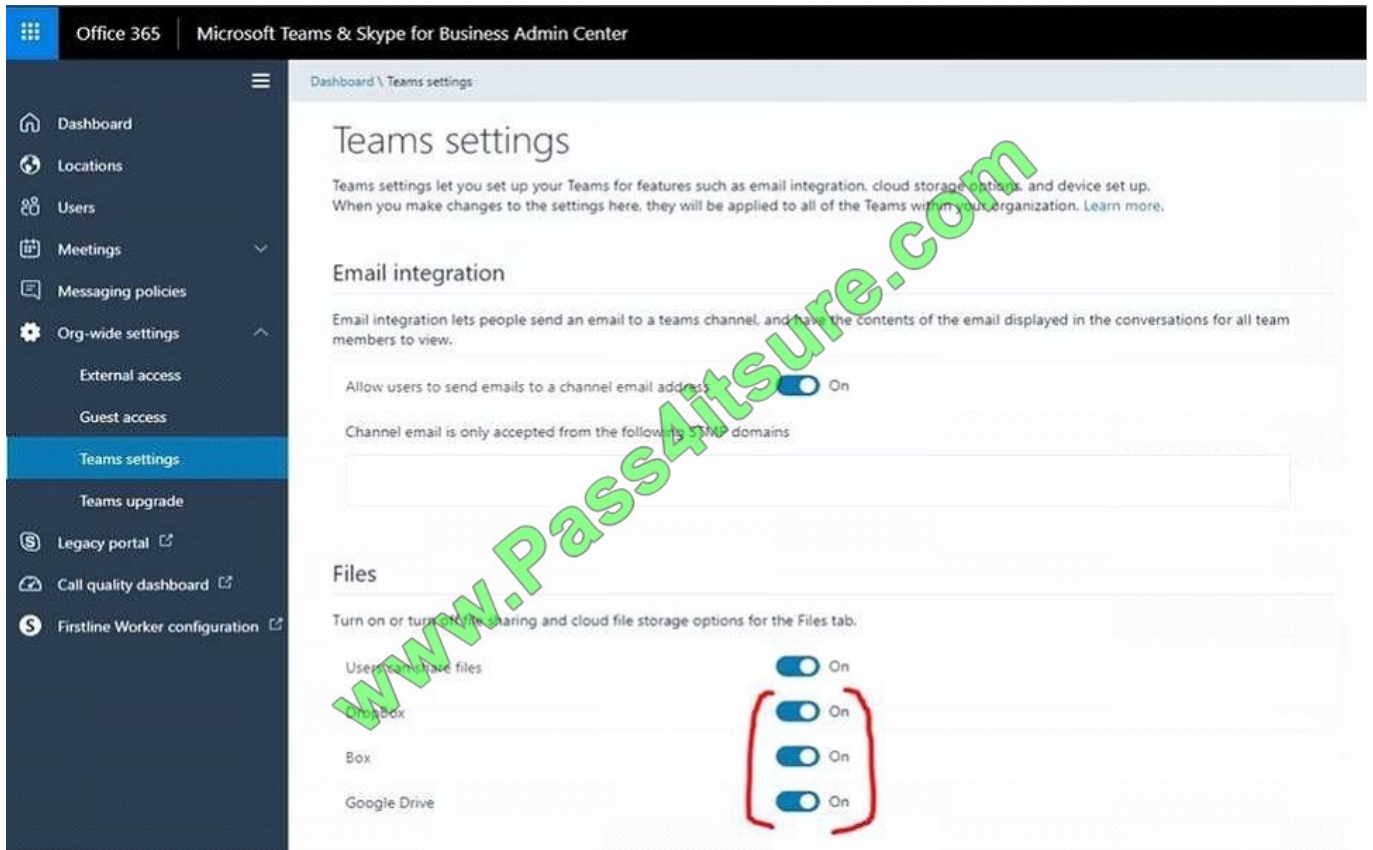
You have a Microsoft 365 subscription.

You need to prevent users from using third-party cloud storage in Microsoft Teams. Which settings should you configure from the Microsoft Teams and Skype for Business Admin Center?

- A. Services and add-ins
- B. Teams settings
- C. Manage teams
- D. Messaging policies
- E. Meeting policies

Correct Answer: B

Go to "Microsoft Teams and Skype for Business Admin Center" and choose Org-wide settings - Team settings. Under "Files" it says "Turn on or turn off file sharing and cloud file storage options for the Files tab. Change the settings for DropBox, Box and Google Drive to "Off". then Save the settings.

**References:**

<https://techcommunity.microsoft.com/t5/Microsoft-Teams/Disable-additional-cloud-storage-DropBox-Box-and-Google-Drive/td-p/253335>

QUESTION 4

You need to recommend a solution for the documents stored in the Finance site. What should you recommend?

- A. Enable Azure Information Protection policy labeling
- B. For each library, enable sensitivity labeling that uses protection
- C. Enable an Information Rights Management (IRM) policy for the libraries
- D. From Settings in the SharePoint admin center, enable Information Rights Management (IRM) for SharePoint Online

Correct Answer: B

Scenario: The locally stored content is not classified as confidential and users can email documents to external people

Apply Azure Information Protection to protect files in a highly confidential SharePoint Online team site.

Configure Azure Information Protection with a new scoped policy and sub-label for protection and permissions of your highly confidential SharePoint Online team site.

Note: Details:



Sign in to the Office 365 portal with an account that has the Security Administrator or Company Administrator role. For help, see Where to sign in to Office 365. In a separate tab of your browser, go to the Azure portal ([https://](https://portal.azure.com)

portal.azure.com). If this is the first time you are configuring Azure Information Protection, see these instructions. In the list pane, click All services, type information, and then click Azure Information Protection.

Click Labels.

Right-click the Highly Confidential label, and then click Add a sub-label. Type a name for the sub-label in Name and a description of the sub-label in Description. In Set permissions for documents and emails containing this label, click Protect.

References:

<https://docs.microsoft.com/en-us/office365/securitycompliance/protect-sharepoint-online-files-with-azure-information-protection>

QUESTION 5

Note: This Question is part of a series of Questions that present the same scenario. Each Question in the series contains a unique solution that might meet the stated goals. Some Question sets might have more than one correct solution,

while others might not have a correct solution.

After you answer a Question in this section, you will NOT be able to return to it. As a result, these Questions will not appear in the review screen.

You have a Microsoft 365 subscription.

SharePoint administrators open several Microsoft support tickets.

You need to view the status of the support tickets.

Solution: From the Microsoft 365 admin center, you select Health, and then you select Message center.

Does this meet the goal?

A. Yes

B. No

Correct Answer: B

Use the On the Service requests page, not the Service health page. On the Service requests page you can view the status of any service requests that you have filed on your clients\' behalf. You can also search for them by supplying a reference number, or by the company name.

Incorrect Answers:

A: On the Service health page you can view the aggregated health status of all services. You can click on a service, for example, Exchange, to get a list of incidents for that service, and then click on the incident number to get details at incident level.



References:

<https://support.office.com/en-us/article/tour-of-the-office-365-partner-admin-center-preview-2b781cc2-e5d7-4eef-b21d-143775f01b5d>

QUESTION 6

You have a SharePoint hybrid environment.

When you run a search on-premises, you do not see any results from SharePoint Online on the results page.

You need to ensure that SharePoint Online results appear on the search results page along with the results from on-premises SharePoint Server.

Which two objects should you create? Each correct answer presents part of the solution.

NOTE: Each correct selection is worth one point.

- A. a search results page in on-premises SharePoint Server
- B. a result source in on-premises SharePoint Server
- C. a query rule in on-premises SharePoint Server
- D. a search results page in SharePoint Online
- E. a result source in SharePoint Online
- F. a query rule in SharePoint Online

Correct Answer: BC

References:

<https://docs.microsoft.com/en-us/sharepoint/hybrid/display-hybrid-federated-search-results-in-sharepointserver>

QUESTION 7

You have a Microsoft 365 subscription.

A user experiences issues accessing Microsoft Teams from Internet Explorer. When the user attempts to sign in from Internet Explorer, the web browser enters a loop and the user is unable to sign in.

You need to resolve the issue. What should you do?

- A. To Internet Explorer, add the following sites as trusted sites: <https://login.microsoftonline.com>
https://*.teams.microsoft.com
- B. Start Internet Explorer by using InPrivate Browsing
- C. Clear the browsing history and restart Internet Explorer
- D. To Internet Explorer, add the following sites as trusted sites: <https://admin.microsoft.com>



https://*.teams.microsoft.com

Correct Answer: A

Symptoms

When you try to sign in to Microsoft Teams in Microsoft Edge or Internet Explorer, the site continually loops, and you can never sign in.

Cause

This issue occurs if your organization uses Trusted Sites in Internet Explorer and doesn't enable the URLs for Microsoft Teams. In this case, the Teams web-based application cannot sign in, as the trusted sites for Teams are not enabled.

Resolution

To resolve this issue, make the following changes to Internet Explorer settings either through administrator rights or a Group Policy object (GPO).

Note This procedure must be performed in Internet Explorer. Edge uses the same settings.

1.

Make the following changes to IE settings or from the Control Panel, either with Administrator rights or a Group Policy Object:

2.

Under Internet Options > Privacy > Advanced, accept First-Party and Third-Party cookies, and check the box for Always allow session cookies.

3.

Click Internet Options > Security > Trusted Sites > Sites, and add all of the following: <https://login.microsoftonline.com>
https://*.teams.microsoft.com References: <https://docs.microsoft.com/en-us/microsoftteams/known-issues>
<https://support.microsoft.com/en-ca/help/4052730/microsoft-teams-website-is-stuck-in-a-login-loop>

QUESTION 8

You have a SharePoint Server farm.

You configure the farm to support custom tiles, and you add an item to the custom files list. You discover that the new item appears at the bottom of the list in the app launcher. You need to ensure that the new item appears first on the list.

Solution: You run the Add-PnpNavigationNode cmdlet and specify the first parameter.

Does this meet the goal?

A. Yes

B. No

Correct Answer: B

**QUESTION 9**

You have a Microsoft SharePoint Online site collection. You create a term set group. You need to ensure that a user named User1 can create new term sets in the term set group. The solution must use the principle of least privilege. Which role should you assign to User1 to best achieve the goal? More than one answer choice may achieve the goal. Select the BEST answer.

- A. Contributor
- B. Editor
- C. Group Manager
- D. Term Store Administrator

Correct Answer: A

A Contributor can create or change a term set.

References:

<https://docs.microsoft.com/en-us/sharepoint/assign-roles-and-permissions-to-manage-term-sets>

QUESTION 10

You have a SharePoint Server farm.

You need to ensure that a user named User1 can apply style sheets and override list behaviors. The solution must use the principle of least privilege.

Which permission best achieves the goal? More than one answer choice may achieve the goal. Select the BEST answer.

- A. Edit
- B. Full Control
- C. Design
- D. Limited Access

Correct Answer: C

QUESTION 11

You have a SharePoint Server farm and a Microsoft 365 subscription. You plan to migrate some SharePoint sites to SharePoint Online. You need to identify users who have access to your SharePoint Server on-premises environment and are

NOT mapped to a Microsoft Azure Active Directory (Azure AD) account.



What should you use?

- A. The Test-SPContentDatabase cmdlet
- B. SharePoint Migration Assessment Tool (SMAT)
- C. SharePoint Migration Tool
- D. Azure AD Connect

Correct Answer: B

References: <https://docs.microsoft.com/en-us/sharepointmigration/sharepoint-migration-identity-mapping-tool>

QUESTION 12

You have a Microsoft 365 subscription.

You need to prevent unmanaged devices from accessing Microsoft OneDrive for Business.

Which admin center should you use?

- A. SharePoint
- B. Intune
- C. Azure ATP
- D. Security and Compliance

Correct Answer: A

From the SharePoint admin center you can block or limit access to SharePoint and OneDrive content from unmanaged devices. Incorrect Answers:

B: You can use Intune to deploy the mobile apps for iOS and Android and to deploy the new OneDrive sync client.

C: Azure Advanced Threat Protection (ATP) is a cloud-based security solution that leverages your on-premises Active Directory signals to identify, detect, and investigate advanced threats, compromised identities, and malicious insider actions directed at your organization. Azure ATP enables SecOp analysts and security professionals struggling to detect advanced attacks in hybrid environments.

References: <https://docs.microsoft.com/en-us/sharepoint/control-access-from-unmanaged-devices>

[Latest MS-302 Dumps](#)

[MS-302 VCE Dumps](#)

[MS-302 Study Guide](#)



To Read the [Whole Q&As](#), please purchase the [Complete Version](#) from [Our website](#).

Try our product !

100% Guaranteed Success

100% Money Back Guarantee

365 Days Free Update

Instant Download After Purchase

24x7 Customer Support

Average 99.9% Success Rate

More than 800,000 Satisfied Customers Worldwide

Multi-Platform capabilities - Windows, Mac, Android, iPhone, iPod, iPad, Kindle

We provide exam PDF and VCE of Cisco, Microsoft, IBM, CompTIA, Oracle and other IT Certifications. You can view Vendor list of All Certification Exams offered:

<https://www.pass4itsure.com/allproducts>

Need Help

Please provide as much detail as possible so we can best assist you.

To update a previously submitted ticket:



 One Year Free Update <p>Free update is available within One Year after your purchase. After One Year, you will get 50% discounts for updating. And we are proud to boast a 24/7 efficient Customer Support system via Email.</p>	 Money Back Guarantee <p>To ensure that you are spending on quality products, we provide 100% money back guarantee for 30 days from the date of purchase.</p>	 Security & Privacy <p>We respect customer privacy. We use McAfee's security service to provide you with utmost security for your personal information & peace of mind.</p>
---	---	--

Any charges made through this site will appear as Global Simulators Limited.

All trademarks are the property of their respective owners.

Copyright © pass4itsure, All Rights Reserved.