



HPE2-K45^{Q&As}

Using HPE SimpliVity

Pass HP HPE2-K45 Exam with 100% Guarantee

Free Download Real Questions & Answers **PDF** and **VCE** file from:

<https://www.pass4itsure.com/hpe2-k45.html>

100% Passing Guarantee
100% Money Back Assurance

Following Questions and Answers are all new published by HP Official Exam Center

- ⚙️ **Instant Download** After Purchase
- ⚙️ **100% Money Back** Guarantee
- ⚙️ **365 Days** Free Update
- ⚙️ **800,000+** Satisfied Customers





QUESTION 1

A customer wants to migrate virtual machines from the existing infrastructure to HPE SimpliVity. How can you complete this task?

- A. Connect VMFS datastores holding the virtual machine files to HPE SimpliVity nodes, and migrate the virtual machines.
- B. Share HPE SimpliVity datastores with standard ESXi hosts, and migrate the virtual machines.
- C. Map VMFS datastores holding the virtual machine files as an RDM to HPE SimpliVity nodes, and migrate the virtual machines.
- D. Add ESXi system to the HPE SimpliVity cluster, and migrate the virtual machines to HPE SimpliVity datastores.

Correct Answer: D

QUESTION 2

What is the difference between crash consistent and application consistent cloning methods?

- A. Application-consistent clones allow the pending I/O operations to finish before committing them to the database.
- B. Both methods are the same; the only difference is speed of cloning.
- C. Crash consistent method should be used only for the virtual machines with Fault Tolerance enabled.
- D. Application consistent method is available only for Linux operating systems.

Correct Answer: A

QUESTION 3

A customer has a remote office with very limited rack space. Which HPE SimpliVity model best meets this customer's needs?

- A. HPE SimpliVity 325 Gen10
- B. HPE SimpliVity 380 Gen10 G
- C. HPE SimpliVity 2600
- D. HPE SimpliVity 380 Gen10 H

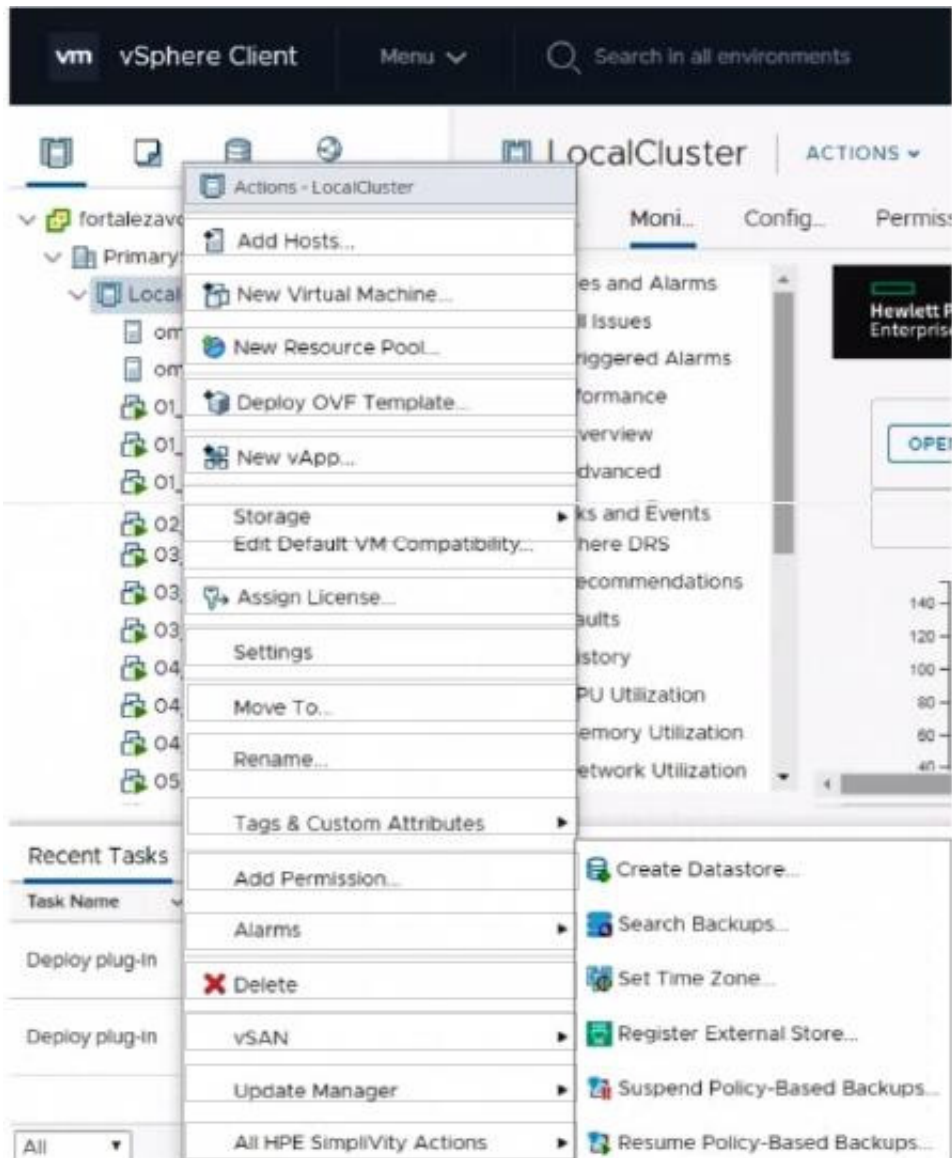
Correct Answer: C

QUESTION 4

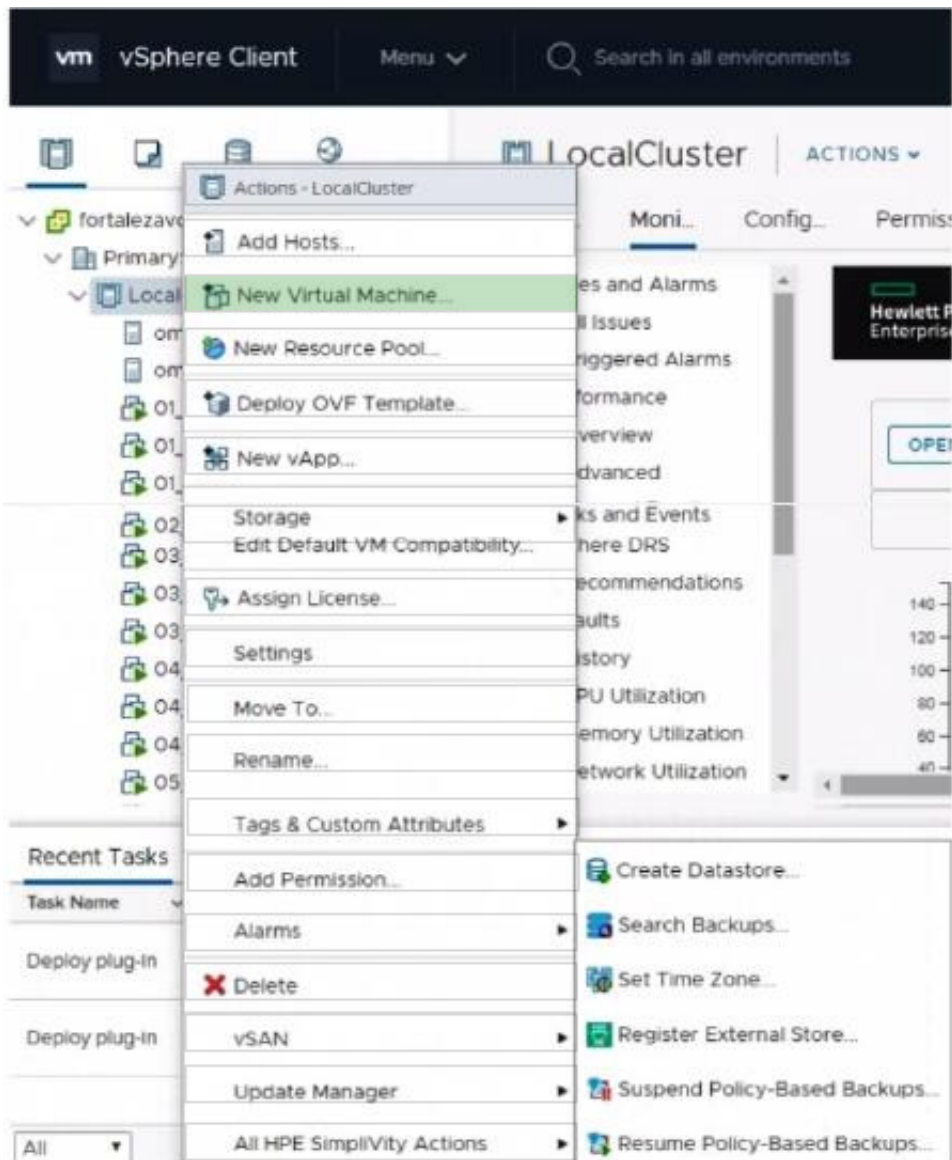
Click the option that will allow you to integrate HPE SimpliVity with HPE Storence.



Hot Area:



Correct Answer:



QUESTION 5

A customer deleted a folder from a virtual machine running Windows. Click the backup option that you should use to restore this folder.

Hot Area:



Search Backups



Virtual machine name: 01_Win01_FOR ⓘ

ADD FILTER SEARCH Applied: 0

BACKUP ACTIONS									
<input type="checkbox"/>	Backup Action	Template	Timestamp	Status	Size	Unique Backup Size	Unique Size Calculation Time	Sent Size	Sent Duration
<input checked="" type="checkbox"/>	Restore Virtual Machine		2/22/20, 7:00 PM	Protected	489.1 GB	52.7 MB	2/22/20, 7:24 PM	8.0 MB	30 secs
<input checked="" type="checkbox"/>	Restore Files		2/22/20, 7:20 PM	Protected	489.1 GB	0.0 KB		0.0 KB	
<input type="checkbox"/>	Rename Backup		2/22/20, 7:10 PM	Protected	489.1 GB	0.0 KB		0.0 KB	
<input type="checkbox"/>	Copy Backup		2/22/20, 7:00 PM	Protected	489.1 GB	0.0 KB		0.0 KB	
<input type="checkbox"/>	Calculate Unique Backup Size		2/22/20, 6:50 PM	Protected	489.1 GB	0.0 KB		0.0 KB	
<input type="checkbox"/>	Delete Backup								
<input type="checkbox"/>	Lock Backup								
<input type="checkbox"/>	Set Expiration Date								

Correct Answer:

Search Backups



Virtual machine name: 01_Win01_FOR ⓘ

ADD FILTER SEARCH Applied: 0

BACKUP ACTIONS									
<input type="checkbox"/>	Backup Action	Template	Timestamp	Status	Size	Unique Backup Size	Unique Size Calculation Time	Sent Size	Sent Duration
<input checked="" type="checkbox"/>	Restore Virtual Machine		2/22/20, 7:00 PM	Protected	489.1 GB	52.7 MB	2/22/20, 7:24 PM	8.0 MB	30 secs
<input checked="" type="checkbox"/>	Restore Files		2/22/20, 7:20 PM	Protected	489.1 GB	0.0 KB		0.0 KB	
<input type="checkbox"/>	Rename Backup		2/22/20, 7:10 PM	Protected	489.1 GB	0.0 KB		0.0 KB	
<input type="checkbox"/>	Copy Backup		2/22/20, 7:00 PM	Protected	489.1 GB	0.0 KB		0.0 KB	
<input type="checkbox"/>	Calculate Unique Backup Size		2/22/20, 6:50 PM	Protected	489.1 GB	0.0 KB		0.0 KB	
<input type="checkbox"/>	Delete Backup								
<input type="checkbox"/>	Lock Backup								
<input type="checkbox"/>	Set Expiration Date								

QUESTION 6

What can be configured using HPE Storence Management Console?

- A. Catalyst store
- B. backup policy
- C. storage policy
- D. deduplication ratio

Correct Answer: C

**QUESTION 7**

You are designing a new HPE SimpliVity solution. You want to confirm your configuration is compatible and supported with the customer requirements. Which items can you find in the HPE SimpliVity mniStack Interoperability Guide? (Select two.)

- A. GPU Accelerators
- B. ESXi version
- C. Guest S version
- D. vSphere License
- E. Processor model

Correct Answer: D

QUESTION 8

Refer to exhibit:

Template	Timestamp	Status	Size	Unique Backup Size	Unique Size Calculation Time	Sent Size	Sent Duration	Size
	2/22/20, 7:00 PM	Protected	489.1 GB	52.7 MB	2/22/20, 7:24 PM	8.0 MB	30 secs	2.7
	2/22/20, 7:20 PM	Protected	489.1 GB	0.0 KB		0.0 KB		
	2/22/20, 7:10 PM	Protected	489.1 GB	0.0 KB		0.0 KB		
	2/22/20, 7:00 PM	Protected	489.1 GB	0.0 KB		0.0 KB		
	2/22/20, 6:50 PM	Protected	489.1 GB	0.0 KB		0.0 KB		
2020-02-22T12:40:00-05:00	2/22/20, 6:40 PM	Protected	489.1 GB	0.0 KB		0.0 KB		
2020-02-22T12:30:00-	2/22/20, 6:30 PM	Protected	489.1 GB	0.0 KB		0.0 KB		

You are using Restore Virtual Machine for a given virtual machine. Which result is achieved by this operation?

- A. Virtual machine boot partition mapped as IS image to another VM
- B. New snapshot added to existing virtual machine
- C. New linked-clone created



D. New virtual machine created out of this backup

Correct Answer: C

QUESTION 9

Which functionality does HPE InfoSight for HPE SimpliVity provide?

- A. balance workloads across HPE SimpliVity nodes based on utilization
- B. recommendation for guest operating system settings optimization
- C. automated firmware and software upgrades for registered customers
- D. monitoring of virtual machine latency

Correct Answer: A

QUESTION 10

A customer wants to provide access to the HPE SimpliVity datastores for compute nodes running CPU-intensive virtual machines. What should you tell the customer?

- A. It is supported to connect up to 5 compute nodes per SimpliVity node.
- B. Additional license is required to connect ESXi nodes to SimpliVity datastores.
- C. Connecting ESXi compute nodes is possible only when VMFS datastores are configured at SimpliVity Federation level
- D. Compute nodes must reside in the same cluster as HPE SimpliVity nodes.

Correct Answer: D

[HPE2-K45 PDF Dumps](#)

[HPE2-K45 Practice Test](#)

[HPE2-K45 Braindumps](#)