



# HPE0-S58<sup>Q&As</sup>

Implementing HPE Composable Infrastructure Solutions

## Pass HP HPE0-S58 Exam with 100% Guarantee

Free Download Real Questions & Answers **PDF** and **VCE** file from:

<https://www.pass4itsure.com/hpe0-s58.html>

100% Passing Guarantee  
100% Money Back Assurance

Following Questions and Answers are all new published by HP Official Exam Center

- ⚙️ **Instant Download** After Purchase
- ⚙️ **100% Money Back** Guarantee
- ⚙️ **365 Days** Free Update
- ⚙️ **800,000+** Satisfied Customers



**QUESTION 1**

A customer needs to significantly improve I/O performance to a database server.

Which product should an integrator implement as part of a Synergy composable solution?

- A. HPE Synergy D3940 storage module with SSD drives
- B. HPE Composer with NVMe drives
- C. HPE Synergy compute module with a Tesla accelerator
- D. HPE Synergy Image Streamer

Correct Answer: A

---

**QUESTION 2**

A customer has a five-frame Synergy deployment with redundant Composers. An integrator needs to install Image Streamer. What must the integrator consider before taking the planned action?

- A. Image Streamer requires the use of the MGMT port from both of the FLMs in the frame where the Image Streamer appliance is installed
- B. The frame where the Image Streamer is being installed must not contain an Interconnect Module
- C. The location of the Image Streamer must be manually modified through the Composer
- D. A connection to the management network must be established to an FLM in the same frame that houses the Image Streamer

Correct Answer: D

---

**QUESTION 3**

Refer to the exhibit.



A Synergy integrator needs to establish the module cluster links between two master modules, as shown. Which ports can the integrator use for the module cluster links?

- A. 1 and 2



B. 3 and 4

C. 5 and 6

D. 7 and 8

Correct Answer: D

Reference: [https://support.hpe.com/hpsc/doc/public/display?docId=emr\\_na-a00017673en\\_usanddocLocale=en\\_US](https://support.hpe.com/hpsc/doc/public/display?docId=emr_na-a00017673en_usanddocLocale=en_US)  
(15)

---

#### QUESTION 4

A customer has forgotten the password for the HPE Composer managing the customer's HPE Synergy Infrastructure. Where can the customer reset the password with the assistance of HPE Support?

A. FLM Access to Synergy Console

B. Virtual Center server

C. Front Access Panel to Synergy Console

D. Maintenance Console screen

Correct Answer: A

Reference: [https://support.hpe.com/hpsc/doc/public/display?docId=emr\\_na-a00028780en\\_usanddocLocale=en\\_US](https://support.hpe.com/hpsc/doc/public/display?docId=emr_na-a00028780en_usanddocLocale=en_US)

---

#### QUESTION 5

Which management tool required by HPE Infosight must be deployed at the customer site?

A. HPE Global Dashboard

B. HPE OneView

C. HPE iLO Amplifier

D. HPE StoreServ Management Console (SSMC)

Correct Answer: C

Reference: <https://app.cdn.lookbookhq.com/lbhq-production/10326/content/original/a3bb19f2-f5ce-496e-b777-e9761d65d3d2/5HPEInfoSightandOneViewDrawerStatement-FAQ.PDF>

---

#### QUESTION 6

##### HOTSPOT

An integrator needs to configure zoned SAS drives from the HPE Synergy D3940 storage module for an HPE SY 480 Gen9 compute module for a new application.



Click where the integrator should perform the configuration.

Hot Area:


Create Server Profile Template

Local Storage ▾


Local Storage

Consistency checking

Minimum match ▾

Integrated storage controller 

*Managed manually*  
*no storage is configured*

SAS Mezz 1 storage controller 

*Managed manually*  
*no storage is configured*

SAN Storage

☐ Manage SAN Storage

Boot Settings

☒ Manage boot mode

Consistency checking

Exact match ▾

Boot mode

Select mode ▾

Correct Answer:




Create Server Profile Template


Local Storage

Local Storage

Consistency checking

Minimum match

Integrated storage controller   
*Managed manually*  
*no storage is configured*

SAS Mezz 1 storage controller   
*Managed manually*  
*no storage is configured*

SAN Storage

☐ Manage SAN Storage

Boot Settings

☒ Manage boot mode

Consistency checking

Exact match

Boot mode

Select mode

**QUESTION 7**

Which component must be deployed at the customer site and is essential for HPE InfoSight for Servers?

- A. HPE Intelligent Provisioning
- B. HPE Global Dashboard
- C. iLO Amplifier Pack
- D. HPE Composer

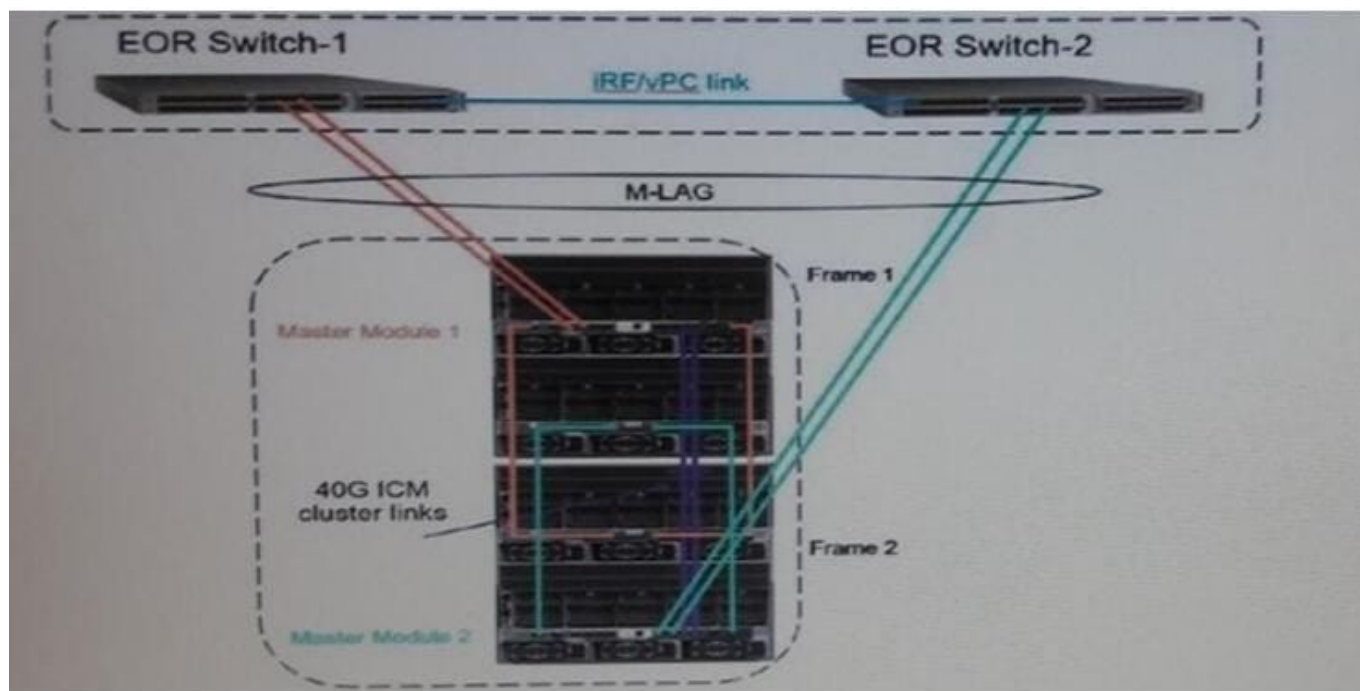


Correct Answer: C

Reference: <https://www.slideshare.net/Xylos/hpe-infosight-for-servers>

### QUESTION 8

Refer to the exhibit.



A customer with the design shown needs to perform an in-place upgrade to its environment to scale the two-frame single homed Multimodule Link Aggregation Group (MLAG) configuration to a three-frame configuration. The new frame needs to provide a redundant 20Gb connection for the compute module ports in Fabric 3.

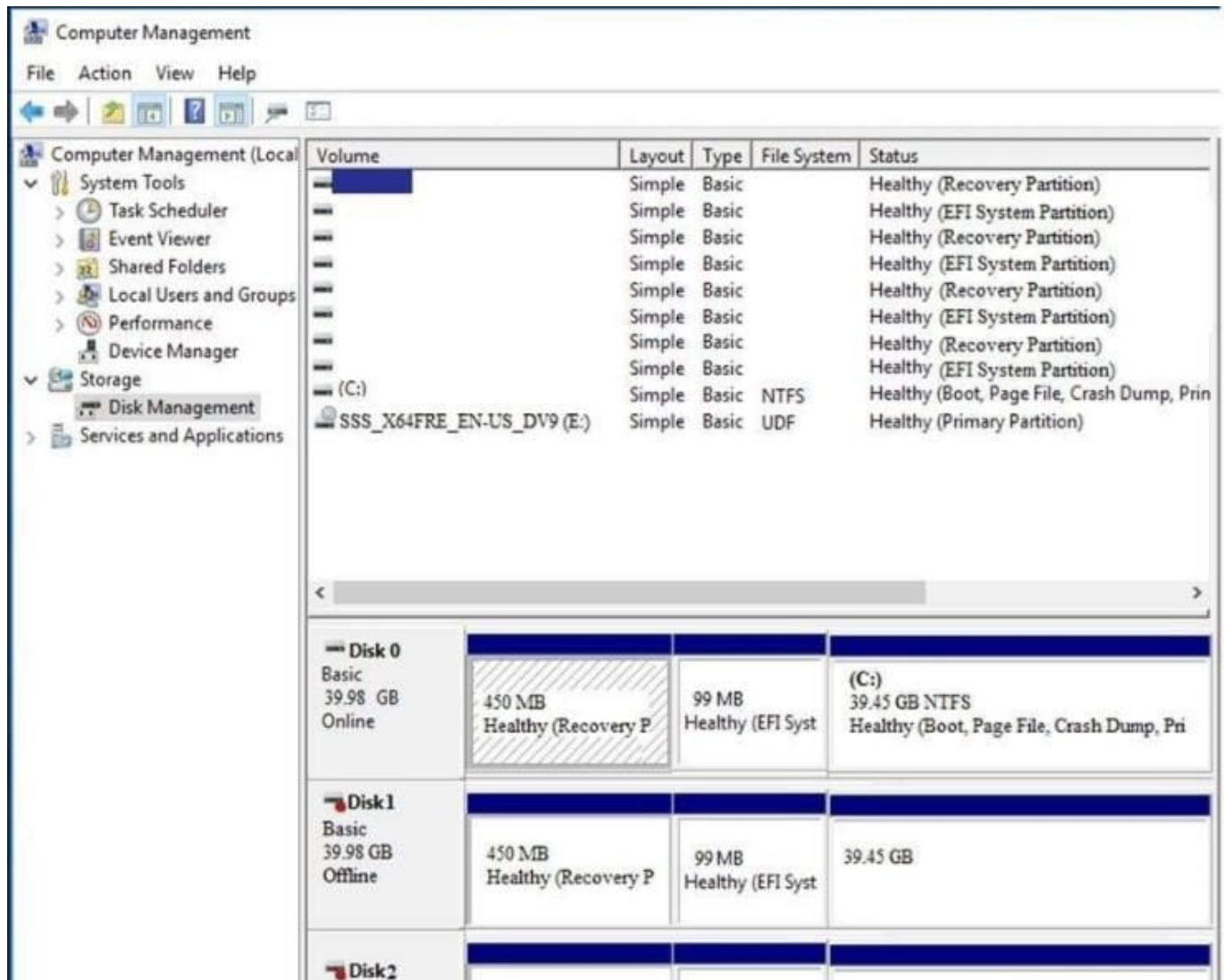
Which interconnect modules should the integrator use in Frame 3?

- A. HPE Virtual Connect SE 40Gb F8 module in bay 3 and HPE Virtual Connect SE 40Gb F8 Module in bay 6
- B. HPE Synergy 10Gb Interconnect Link Module in bay 3 and HPE Synergy 10Gb Interconnect Link Module in bay 6
- C. HPE Synergy 20Gb Interconnect Link Module in bay 3 and HPE Synergy 20Gb Interconnect Link Module in bay 6
- D. HPE Synergy 20Gb Interconnect Link Module in bay 3 and HPE Synergy 10Gb Interconnect Link Module in bay 6

Correct Answer: B

### QUESTION 9





A customer connected a logical drive from 3PAR StoreServ array to the Windows Server 2016 as a data drive.

The customer complains that in the Disk Manager, they can see the same volume four times.

What can an integrator do to fix this issue?

- A. Delete any three logical drives and leave one of them
- B. Go to the SSMC and enable multipathing option for this volume
- C. Create an NTFS partition on any logical drive to consolidate the logical drives
- D. Install an MPIO component to hide redundant paths to the volume

Correct Answer: B

## QUESTION 10

Refer to the exhibit.



## Add Connection

### General

Name	<input type="text" value="Connection"/>	
Function type	<div><div>Ethernet</div><div>Fibre Channel</div><div>iSCSI</div></div>	Specify the device type
Network		<input type="text" value=""/> <input type="button" value="Q"/>

An integrator needs to add an FCoE connection to the server profile, but the FCoE connection type is not available.

What is the likely cause of this issue?

- A. FCoE capable interconnect modules are not installed in the Synergy frame
- B. Defined FCoE network is not associated with a SAN or does not have VLAN Id defined
- C. A FCoE connection is not available, as there is no LIG configured for FCoE connectivity
- D. The FCoE connection has not been added as a Fibre Channel connection within a server profile

Correct Answer: D

### QUESTION 11

#### HOTSPOT

A customer discovered performance issues with one of the volumes used by an application.

An integrator recommended changing the RAID level for this volume from RAID6 to RAID5 by moving this volume to a different CPG.

Click the option that will start this operation.

Hot Area:





Team_01_Volume_01		Overview	Actions ✓
<b>General</b>			Create
Name Team_01_Volume_01			Create similar
ID 1234			Add to virtual volume set
Volume set			Save as policy
System <u>Kit23-3Par</u>			Edit
Domain —			Delete
WWN 60002AC000000000			Export
Virtual size 40.00 GiB			Unexport
Compaction —			Convert
Type Base			Tune
Provisioning Thin			Restart tune
Dedup No			Rollback tune
Compression No			
Mode Read/Write			Create snapshot
RAID RAID1			Promote snapshot
Adaptive optimization —			Create clone

Correct Answer:



Team_01_Volume_01		Overview	Actions ✓
<b>General</b>			Create
Name Team_01_Volume_01			Create similar
ID 1234			Add to virtual volume set
Volume set			Save as policy
System <u>Kit23-3Par</u>			Edit
Domain —			Delete
WWN 60002AC000000000			Export
Virtual size 40.00 GiB			Unexport
Compaction —			Convert
Type Base			Tune
Provisioning Thin			Restart tune
Dedup No			Rollback tune
Compression No			
Mode Read/Write			Create snapshot
RAID RAID1			Promote snapshot
Adaptive optimization —			Create clone

Reference: <https://www.3parug.com/viewtopic.php?f=18andt=2627>

#### QUESTION 12

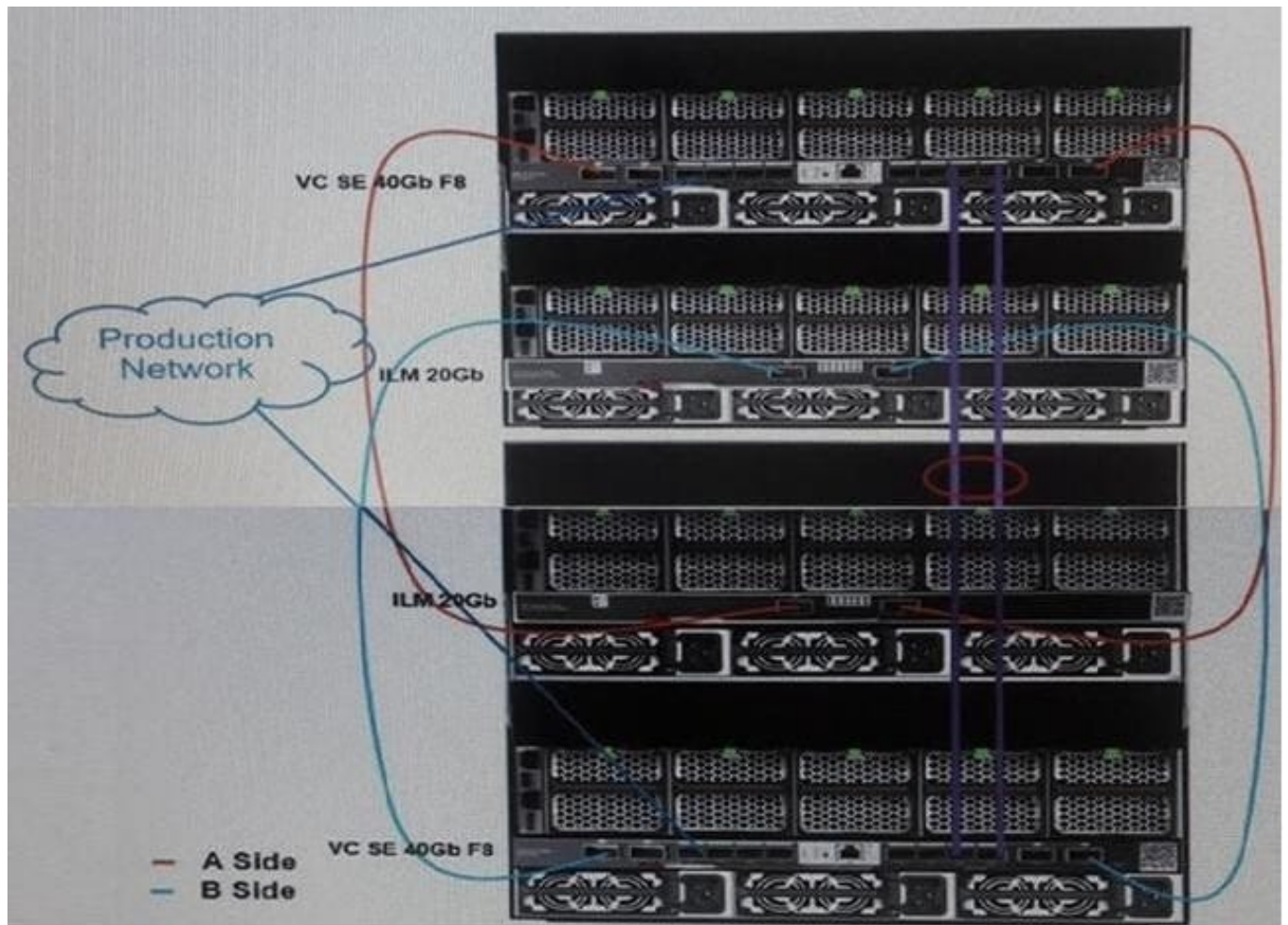
What does the hypervisor cluster profile feature of HPE OneView enable the integrator to accomplish?

- A. configure a DRS cluster that provides load balancing functionality
- B. enable Adaptive Optimization using SSMC that will optimize VM location
- C. enable load balancing policies for the most important VMs using vCenter Server and traffic shaping policies
- D. use the CPU affinity option to improve CPU scheduling

Correct Answer: A

**QUESTION 13**

Refer to the exhibit.



A customer has an HPE Synergy 2-frame configuration, as shown. The customer has a new project and needs to increase the number of compute modules. What is the maximum number of compute nodes that the customer's fabric could support?

- A. 24
- B. 36
- C. 48
- D. 60

Correct Answer: D

**QUESTION 14**

A customer is planning an HPE Synergy solution with 20 frames and needs to minimize the number of management ports that are required to connect the frames into the existing management network. Which procedure should the integrator use to address the customer's concern?



- A. Connect the RJ-45 front ports of each frame to an external switch. Then, connect the uplink from the external switch into the customer's management network.
- B. Connect FLMs from all frames to two external switches for redundancy. Then, connect the two uplinks from the two switches into the customer's management network.
- C. Connect the RJ-45 front ports of each frame to two external switches for redundancy. Then, connect the uplink from the two switches into the customer's management network.
- D. Connect FLMs from all frames into a management ring. Then, connect the management ring to the customer's management network using two uplinks.

Correct Answer: D

---

### QUESTION 15

A customer wants to expand their existing cluster using the Grow Cluster functionality from OneView for vCenter Server. Which OS build plan managed by HPE OneView for vCenter Server can the customer use?

- A. ICsp-Based Deployment
- B. iLO Federation-Based Deployment
- C. Image Streamer-Based Deployment
- D. PXE-Based Deployment

Correct Answer: A

Reference: [https://support.hpe.com/hpsc/doc/public/display?docId=emr\\_na-a00036306en\\_usanddocLocale=en\\_US](https://support.hpe.com/hpsc/doc/public/display?docId=emr_na-a00036306en_usanddocLocale=en_US)

[Latest HPE0-S58 Dumps](#)

[HPE0-S58 PDF Dumps](#)

[HPE0-S58 Practice Test](#)