



HPE0-J50^{Q&As}

Integrating Protected HPE Storage Solutions

Pass HP HPE0-J50 Exam with 100% Guarantee

Free Download Real Questions & Answers **PDF** and **VCE** file from:

<https://www.pass4itsure.com/hpe0-j50.html>

100% Passing Guarantee
100% Money Back Assurance

Following Questions and Answers are all new published by HP Official Exam Center

-  **Instant Download** After Purchase
-  **100% Money Back** Guarantee
-  **365 Days** Free Update
-  **800,000+** Satisfied Customers





QUESTION 1

What must be configured before a storage integrator can start creating volumes from the available space on an HPE MSA 1040/2040?

- A. disk group
- B. snapshot space
- C. date and time on MSA storage
- D. global spare disk

Correct Answer: C

QUESTION 2

Refer to the exhibit.

Configure File Persona		Storage System			?
Storage System					<input type="checkbox"/> Advanced options
Storage System STM-3PAR-Array					
Node Pairs					
Name	State	1st IP Address	2nd IP Address		
0-1	Configured	172.20.6.193	172.20.6.194		
2-3	Configured	172.20.6.195	172.20.6.196		
Network Settings					
Netmask	<input type="text"/>				
Gateway	<input type="text" value="172.20.7.254"/>				
DNS Settings					
				<input type="button" value="Configure"/>	<input type="button" value="Cancel"/>

An Integrator is configuring File Persona on a HPE 3PAR StoreServ 8440.

What is a valid Netmask for the configuration shown?

- A. 172.27.97.61
- B. 172.20.0.0
- C. 255.255.255.0



D. 255.255.252.0

Correct Answer: C

QUESTION 3

A storage integrator is handing over an installed HPE StoreOnce solution to the customer and demonstrates that the system is properly configured. Which CLI command can be used to run an appliance self-test?

- A. run confidencereport
- B. run confidencereport all
- C. system confidencechecker runtest all
- D. confidencecheck

Correct Answer: C

Reference: <https://support.hpe.com/hpsc/doc/public/display?docId=c04000350> (129)

QUESTION 4

As a best practice, what should the Integrator do after finishing a storage solution installation?

- A. Remove and insert each hot swappable component one-by-one.
- B. Verify the used space in a rack.
- C. Test storage solution functionality under the operational temperature range.
- D. Verify the event logs are accumulating data.

Correct Answer: C

QUESTION 5

A storage integrator is handing over an installed HPE StoreOnce solution to the customer and demonstrates the default usernames and passwords for the StoreOnce GUI. The storage administrator is interested in creating another local administrator account.

How can the storage administrator create an administrator account?

- A. Use the native user management feature in the operating system.
- B. Use the Add User link in the User Management screen in the StoreOnce GUI.
- C. Create the new account in Integrated Lights-Out (iLO) and synchronize the account to StoreOnce.
- D. Use the LDAP Integration screen in the StoreOnce GUI.



Correct Answer: C

QUESTION 6

A storage integrator is validating an HPE 3PAR StoreServ implementation. The integrator needs to verify the read/write access to an exported volume from a Windows host. The volume is not visible in Windows Explorer. (Place the steps in the correct order to rectify the solution.)

Select and Place:

Steps

select Disk Management

select Initialize

select Online

select Rescan Disks

select Format Drive

Order

Five empty yellow boxes for ordering the steps.

Correct Answer:

Steps

Five empty light blue boxes for the steps.

Order

select Disk Management

select Rescan Disks

select Format Drive

select Online

select Initialize

QUESTION 7

A customer has two HPE StoreVirtual VSA instances installed on VMware vSphere hosts, 3TB of data allocated for both with 4TB VSA license. The customer has purchased an HPE StoreVirtual VSA 2014 Software Upgrade 4TB to 10TB upgrade license. The data store size is increased from 3TB to 10.5TB for both VMware servers.



What is required to make the newly-added capacity available? (Choose two.)

- A. The VSA appliance needs to be restarted to rescan added storage and expand VSA RAID with the new capacity.
- B. The upgrade license requires that the VSA appliance is redeployed.
- C. The integrator must remove the current RAID configuration and create a new one after adding more storage to the VSA appliance.
- D. The VSA virtual appliance requires more memory and cpu resources.
- E. The VMware vmrk file needs to be extended from 3TB to 10TB for each VSA appliance. Then, VSA will detect the additional storage.

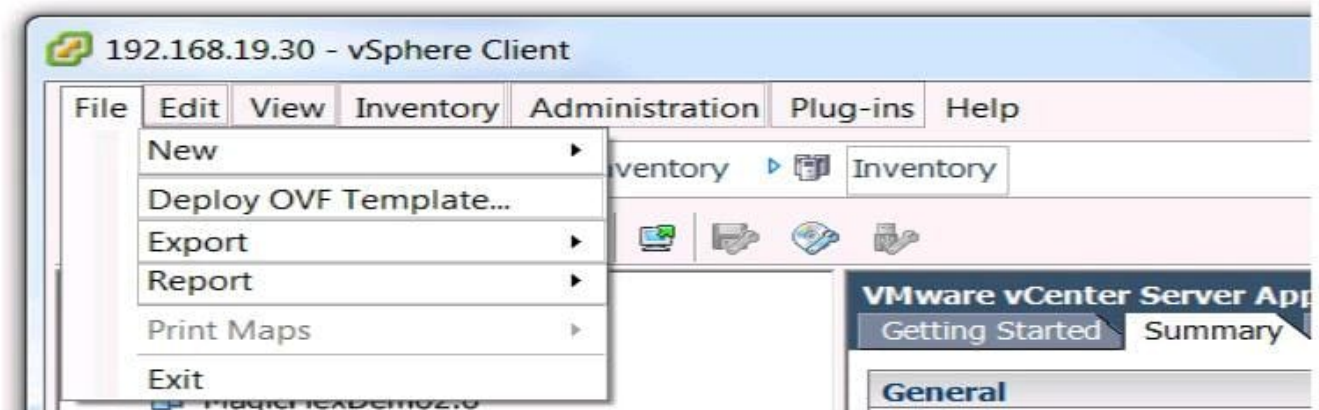
Correct Answer: BE

Reference: <https://h20195.www2.hpe.com/v2/GetPDF.aspx%2Fc04111621.pdf>

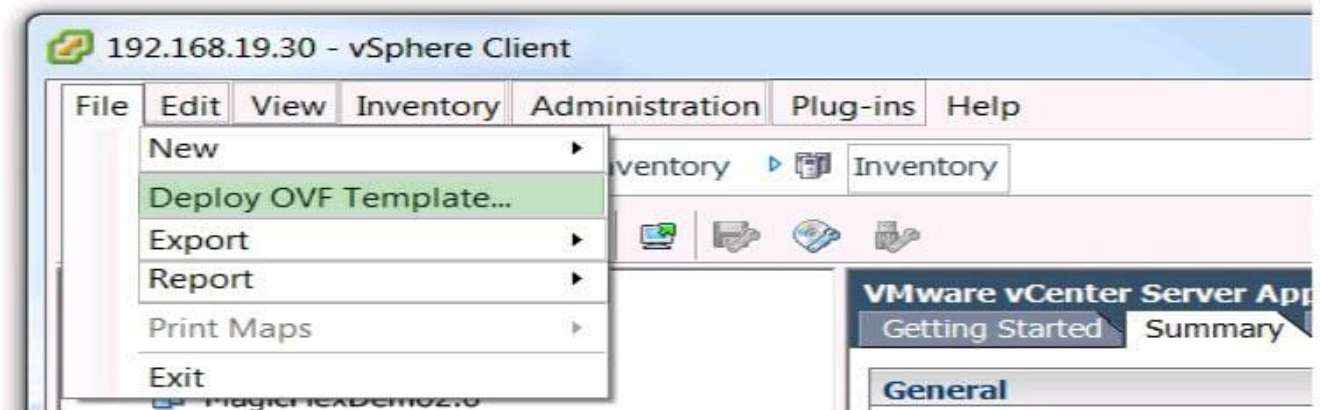
QUESTION 8

Click the menu option a storage integrator will use to install a new StoreOnce VSA solution.

Hot Area:



Correct Answer:



Reference: https://h20628.www2.hp.com/km-ext/kmcsdirect/emr_na-a00058155en_us-1.pdf

QUESTION 9

A storage integrator is planning an HPE MSA Storage installation.

What needs to be taken into consideration when implementing a SAS connected model?

- A. SAS expander or a SAS switch is supported only with non-redundant paths.
- B. SAS expander or a SAS switch is required if eight or more servers are connected.
- C. Up to four servers with redundant paths can be connected.
- D. Up to four servers with non-redundant paths can be connected.

Correct Answer: C

Reference: https://support.hpe.com/hpsc/doc/public/display?docId=emr_na-a00028199en_usanddocLocale=en_US#N10010

QUESTION 10

A customer wants to back up their VMware data stores using consistent snapshots for rapid online recovery. Which RMC components are required when installing the solution?

- A. HPE 3PAR StoreServ Array, RMC, RMC-V plugin
- B. RMC-V plugin installed on the HPE 3PAR StoreServ Array
- C. RMC virtual host, two HPE 3PAR StoreServ Arrays
- D. RMC-V plugin installed on all ESX protected hosts

Correct Answer: B

Reference: http://h20628.www2.hp.com/km-ext/kmcsdirect/emr_na-c04940241-4.pdf



QUESTION 11

Refer to the exhibit.

```
This command takes several minutes to complete execution.
storage discovery successfully completed
# hardware add storage
This command takes several hours to complete execution.
storage addition successfully started
# system show status
Status
-----
Adding 1,099.51GB...
Service Sets Status Notes
-----
#
```

A storage integrator is deploying an HPE StoreOnce VSA.

Which command can be used to find available storage capacity before it can be added in the StoreOnce console?

- A. hardware setup storage
- B. hardware run setup
- C. hardware discover storage
- D. hardware discover disks

Correct Answer: C

Reference: https://h20628.www2.hp.com/km-ext/kmcsdirect/emr_na-c03822685-16.pdf

QUESTION 12

A customer currently utilizing HPE 3PAR StoreServ 7200 is experiencing performance bottlenecks within their SAN storage.

Which cost-effective upsell or cross-sell HPE storage solution will offer significantly more performance and higher capacity to meet their needs and fit within their current infrastructure?

- A. HPE 3PAR StoreServ File Controller v3 System
- B. HPE 3PAR StoreServ 8440
- C. 8-node HPE 3PAR StoreServ 20000 Storage
- D. HPE StoreVirtual 3200 Storage



Correct Answer: C

QUESTION 13

A storage integrator is handing over an installed HPE 3PAR storage system to a customer. The customer wants the original license key of the system for setlicense command that is used to prevent the system from prompting for confirmation of new license key.

Which of the following command shows original license key?

- A. showlicense -raw
- B. displaylicense
- C. licshow
- D. licenseshow

Correct Answer: A

Reference: <https://support.hpe.com/hpsc/doc/public/display?docId=c04204279>

QUESTION 14

A storage integrator is planning the implementation of a single HPE StoreOnce 3100.

How many power cords are required to be connected to PDU from this storage system, when power supply kit was ordered?

- A. 0
- B. 2
- C. 4
- D. 6

Correct Answer: B

Reference: <https://h20195.www2.hpe.com/v2/GetPDF.aspx/c04328820.pdf>

QUESTION 15

After installing the HPE StoreOnce VSA into the VM environment, where can the version number of the software be checked?

- A. in the install log file
- B. on the console login screen
- C. in the install messages



D. on the VMware vCenter

Correct Answer: A

[Latest HPE0-J50 Dumps](#)

[HPE0-J50 VCE Dumps](#)

[HPE0-J50 Practice Test](#)