



HP2-Z33^{Q&As}

HP Unified Wired-Wireless Networks and BYOD

Pass HP HP2-Z33 Exam with 100% Guarantee

Free Download Real Questions & Answers **PDF** and **VCE** file from:

<https://www.pass4itsure.com/hp2-z33.html>

100% Passing Guarantee
100% Money Back Assurance

Following Questions and Answers are all new published by HP Official Exam Center

- ⚙️ **Instant Download** After Purchase
- ⚙️ **100% Money Back** Guarantee
- ⚙️ **365 Days** Free Update
- ⚙️ **800,000+** Satisfied Customers





QUESTION 1

Which command configures the management IP address on a WLAN controller?

- A. interface ip address 192.168.0.100 slot 1
- B. oap management-ip 192.168.0.100 slot 1
- C. management-ip address 192.168.0.100 255.255.255.0
- D. ip address 192.168.0.100 24

Correct Answer: B

Reference:

<http://h20565.www2.hp.com/portal/site/hpsc/template.BINARYPORTLET/public/kb/docDisplay/resource.process/?>

javax.portlet.begCacheTok=com.vignette.cachetokenandjavax.portlet.endCacheTok=com.vignette.cachetokenandjavax.portlet.rid_ba847bafb2a2d782fcbb0710b053ce01=docDisplayResURLandjava

x.portlet.rst_ba847bafb2a2d782fcbb0710b053ce01=wsrp-resourceState%3DdocId%253Demr_na-c03719557-5%257CdocLocale

%253Den_USandjavax.portlet.tpst=ba847bafb2a2d782fcbb0710b053ce01_ws_Blandac.admitted=1401095294880.876444892.492883150 (page 4)

Parameters

ip-address: Specifies the management IP address of the OAP module. This address must be configured on the OAP module.

slot slot-number: Specifies the number of the slot where the switching engine resides. The value of this field must be 0.

Usage guidelines

To use an NMS to manage the switching engine, you must first configure a management IP address for the engine.

Examples

Set the management IP address to 192.168.0.101 for the switching engine of the HP 830 Series PoE+ Unified Wired-WLAN Switch.

system-view

[Sysname] oap management-ip 192.168.0.101 slot 0

QUESTION 2

Which command allows an administrator to access the HP 830 switch CLI from the controller?

- A. oap management-ip 192.168.0.101 module 1



B. oap connect slot 0

C. oap management-ip 192.168.0.101 slot 1

D. oap connect module 0

Correct Answer: B

QUESTION 3

HP has released a new version of an access controller software package file. How does the network administrator activate the new software version?

A. by interrupting the boot sequence and selecting the Update Bootware option

B. by interrupting the boot sequence and selecting the Boot Extend Bootware option

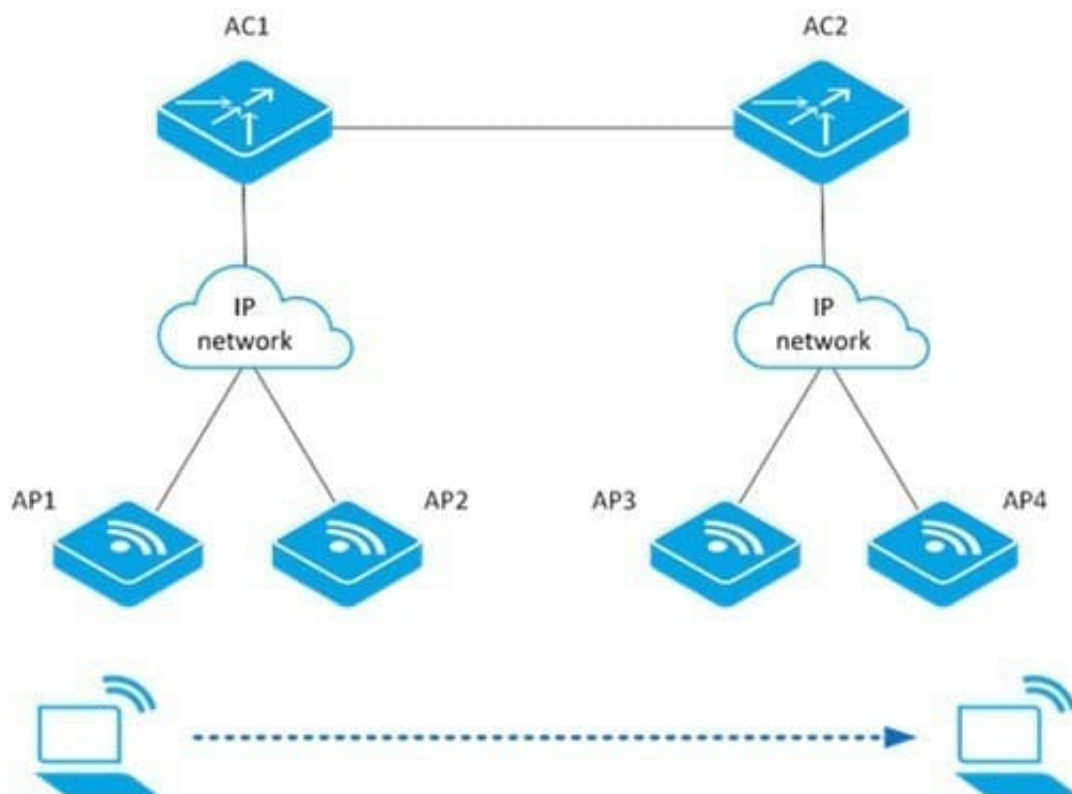
C. by interrupting the boot sequence and selecting the Boot Backup Bootware option

D. by interrupting the boot sequence and selecting the Update Full Bootware option

Correct Answer: B

QUESTION 4

Refer to the exhibit.





A client can roam successfully between AP1 and AP2. However, the client is unable to roam between AP2 and AP3. What could be the problem?

- A. The client is not using RSN+802.1X authentication mode.
- B. The AP2 and AP3 are not in the same mobility group.
- C. The network is using IPv6.
- D. The IACTP service has been disabled on AC1.

Correct Answer: D

QUESTION 5

In an HP BYOD solution, which settings are required in order to allow guest users to access the BYOD registration page? (Select two.)

- A. User Access Manager Access Condition on the VLAN group that selects the GUEST VLAN
- B. User Access Manager Access Policy that defines user authentication
- C. User Access Manager Access Policy that returns Onboarding VLAN
- D. Portal free rule that enables DNS to be forwarded from onboarding VLAN interface to DNS server
- E. Portal server commands that block HTTP traffic from being forwarded

Correct Answer: DE

QUESTION 6

Which action does the Wireless Intrusion Prevention System (WIPS) take when it detects that a device is sending frames with a fixed initialization vector?

- A. captures the frames for future analysis
- B. logs the event
- C. deauthenticates the user
- D. adds the device to the dynamic blacklist

Correct Answer: B

QUESTION 7

Which authentication mechanism uses a RADIUS server in an HP BYOD solution?

- A. WPAPSK



B. WPA2 802.1X

C. WPA2 PSK

D. WEP

Correct Answer: B

QUESTION 8

An employee wants to register an endpoint using wireless and the HP BYOD portal of a company with credentials of the corporate account. What is the correct order of steps to register the endpoint? (Place the steps in the correct order.)

Step 1	<input type="text"/>
Step 2	<input type="text"/>
Step 3	<input type="text"/>
Step 4	<input type="text"/>
Step 5	<input type="text"/>

Hot Area:



Step 1

Select the Wireless SSID of the company.	
Open the web browser.	
Display the web page for registration.	
Enter assigned corporate credentials.	
Access Internet web page.	

Step 2

Select the Wireless SSID of the company.	
Open the web browser.	
Display the web page for registration.	
Enter assigned corporate credentials.	
Access Internet web page.	

Step 3

Select the Wireless SSID of the company.	
Open the web browser.	
Display the web page for registration.	
Enter assigned corporate credentials.	
Access Internet web page.	

Step 4

Select the Wireless SSID of the company.	
Open the web browser.	
Display the web page for registration.	
Enter assigned corporate credentials.	
Access Internet web page.	

Step 5

Select the Wireless SSID of the company.	
Open the web browser.	
Display the web page for registration.	
Enter assigned corporate credentials.	
Access Internet web page.	

Correct Answer:



Step 1

Select the Wireless SSID of the company.	
Open the web browser.	
Display the web page for registration.	
Enter assigned corporate credentials.	
Access Internet web page.	

Step 2

Select the Wireless SSID of the company.	
Open the web browser.	
Display the web page for registration.	
Enter assigned corporate credentials.	
Access Internet web page.	

Step 3

Select the Wireless SSID of the company.	
Open the web browser.	
Display the web page for registration.	
Enter assigned corporate credentials.	
Access Internet web page.	

Step 4

Select the Wireless SSID of the company.	
Open the web browser.	
Display the web page for registration.	
Enter assigned corporate credentials.	
Access Internet web page.	

Step 5

Select the Wireless SSID of the company.	
Open the web browser.	
Display the web page for registration.	
Enter assigned corporate credentials.	
Access Internet web page.	

QUESTION 9

An organization implements an N+1 redundancy for its access controllers (ACs). When the primary AC fails, the access points (APs) successfully fail over to the standby AC. However, when the failed AC comes back in to service, the APs do not switch back to the original AC.



What could cause this to happen?

- A. AP Connection priority on the primary AC is not set to 1.
- B. APs determine which AC to connect to based on load.
- C. APs do not fail back to the original AC.
- D. AP Connection priority on the primary AC is not set to 7.

Correct Answer: D

QUESTION 10

How does an HP BYOD implementation differ from a simple MAC authentication?

- A. In MAC authentication, the MAC address exists as an account in the User Access Manager database. In BYOD, the MAC address of an endpoint is learned during registration.
- B. In MAC authentication, the MAC address exists as an account in the User Access Manager database. In BYOD, a successful MAC authentication of an endpoint must precede the registration of a user account.
- C. In MAC authentication, the MAC address exists as an account in the User Access Manager database. In BYOD, the MAC address of an endpoint does not need to be learned; the user account is what matters.
- D. In MAC authentication, the MAC address is learned during the first authentication. In BYOD, the MAC address of endpoint is learned during registration.

Correct Answer: A

QUESTION 11

What is the maximum data rate that a 2x3 MIMO 802.11 n enabled device can transmit at?

- A. 54Mb/s
- B. 150 Mb/s
- C. 300 Mb/s
- D. 450 Mb/s

Correct Answer: C

QUESTION 12

Refer to the exhibit.



Roam Group

Service

Disable

IP Type

IPv4

Source Address

Auth Mode

Auth Key

(1-16 character)

Member List

IP Address

☐ VLAN

(2-4094, Example: 3, 5-10)

Add

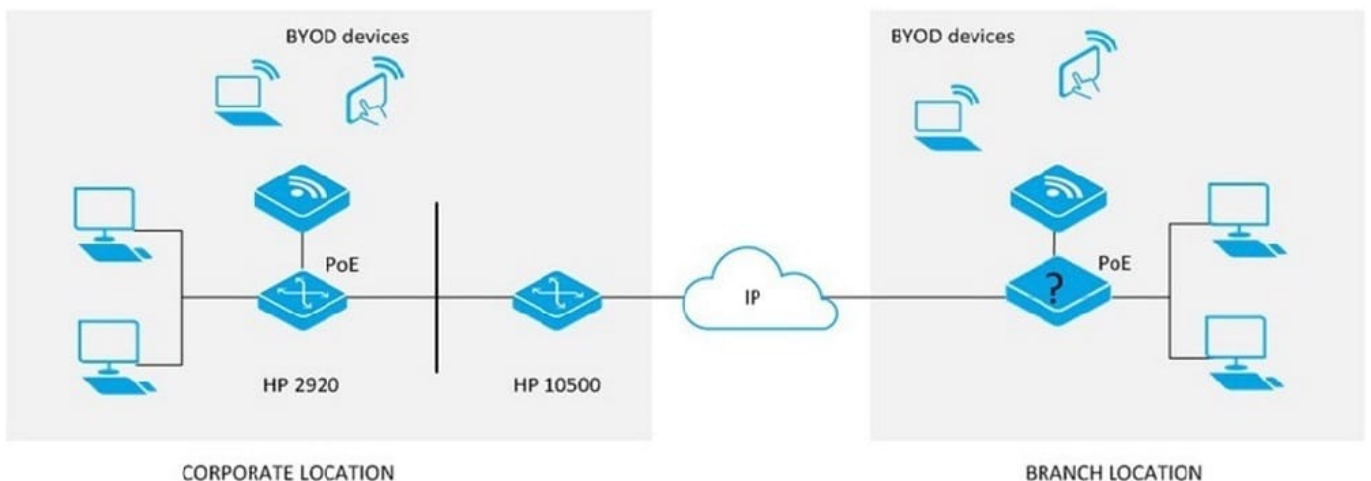
What does the Auth Mode enable?

- A. sets the authentication mechanism(s) that must be used by clients if they wish to roam between access controllers
- B. adds message integrity checks to messages sent between access controllers in the roaming group
- C. ensures that all traffic between access controllers is encrypted
- D. ensures access controllers are authenticated before they join the roaming group

Correct Answer: B

QUESTION 13

Refer to the exhibit.



A company wants to connect a mid-size branch office to their corporate location. An HP 10500/7500 Unified Wired-Wireless module is deployed at the corporate location. A maximum of six HP MSM access points will be deployed at the branch location.

Which HP device meets these customer requirements and is the most cost effective solution for the branch location?



- A. HP 830
- B. HP 870
- C. HP 2920
- D. HP 7500

Correct Answer: A

QUESTION 14

An HP BYOD solution is deployed on a wireless infrastructure. Which components actively participate in the RADIUS authentication process of a user endpoint? (Select two)

- A. HP APs associated with an HP Unified Wireless controller in its default setup
- B. HP Wireless Service Manager (WSM)
- C. HP 830 Switch
- D. HP User Access Manager
- E. HP 830 Access Controller

Correct Answer: AD

QUESTION 15

When accessing the wireless network in 802.1X with EAP-TLS, what do the user endpoints require?

- A. username and password of the user's account
- B. client certificate or root certificate
- C. client certificate and root certificate
- D. MS-CHAPV2 to be configured

Correct Answer: C

Reference: [http://technet.microsoft.com/en?s/library/cc739638\(v=ws.10\).aspxv](http://technet.microsoft.com/en?s/library/cc739638(v=ws.10).aspxv).

[HP2-Z33 Practice Test](#)

[HP2-Z33 Study Guide](#)

[HP2-Z33 Braindumps](#)