

100% Money Back Guarantee

Vendor: HP

Exam Code: HP0-M34

Exam Name: HP Server Automation 9.x. Software

Version: Demo

QUESTION 1

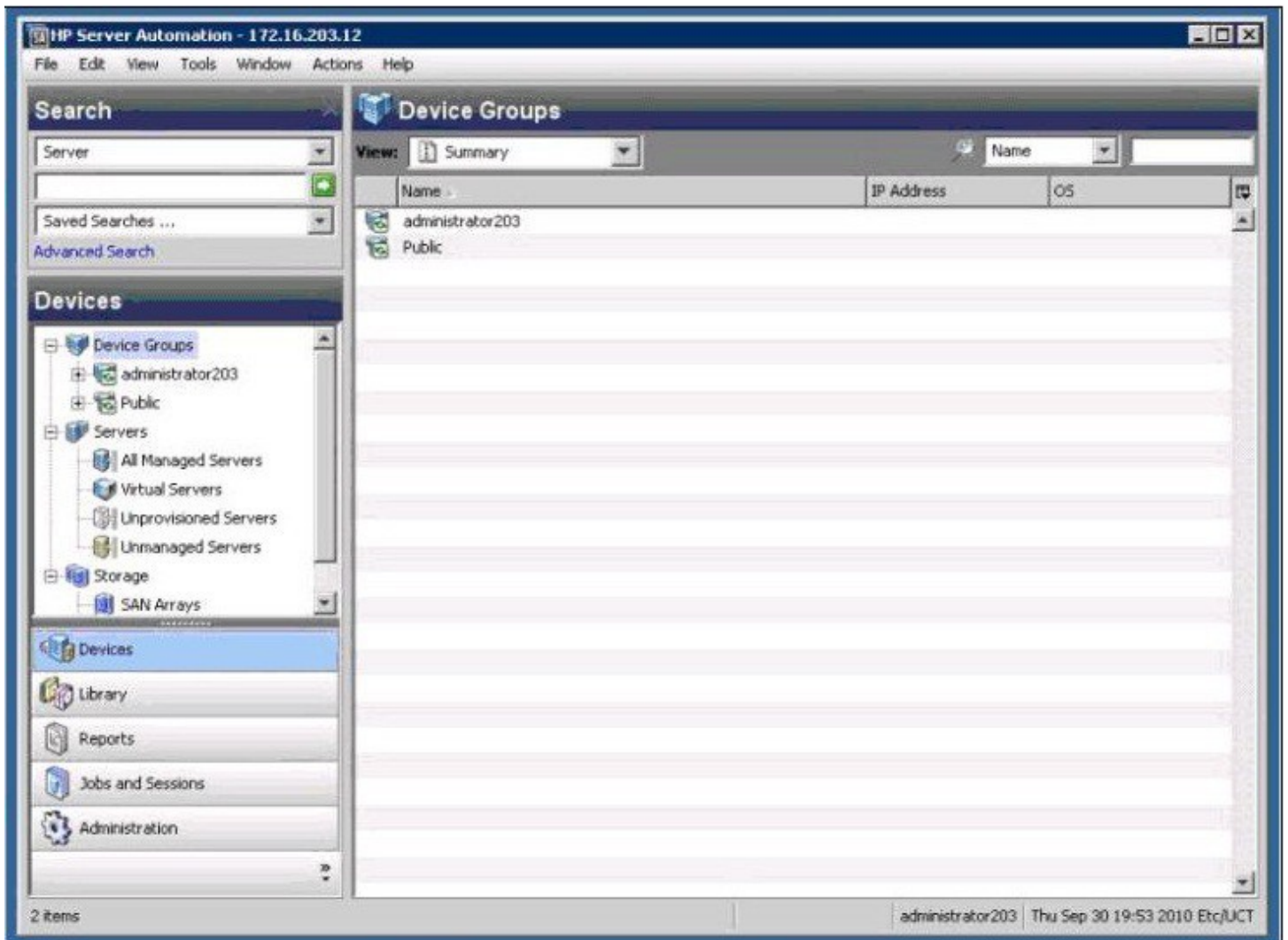
Which type of architecture does the term Multimaster Mesh describe?

- A. the core component bundles distributed on multiple servers
- B. multiple, coordinated Server Automation cores distributed across the network
- C. multiple satellite servers configured to fail over to a single core
- D. a core server running on multiple cluster nodes distributed across the network

Correct Answer: B

QUESTION 2

Click the Exhibit button.



Which user interface is shown in the exhibit?

- A. HP Server Automation Web Client
- B. HP Server Automation Global Shell Client
- C. HP Server Automation Infrastructure Client
- D. HP Server Automation Client

Correct Answer: D

QUESTION 3

How do the core and the agent communicate?

- A. SA bus
- B. Global Shell
- C. SSL tunnel
- D. SSH tunnel

Correct Answer: C

QUESTION 4

Which Application Deployment Manager application components require explicit rollback and undeploy instructions for removal?

- A. code components
- B. application configurations
- C. packages from the Server Automation library
- D. Operations Orchestration flows

Correct Answer: D

QUESTION 5

The agent communications test can only be run from which HP Server Automation component?

- A. SA Client
- B. SA Web Client
- C. Global Shell
- D. Core CLI

Correct Answer: B

QUESTION 6

Which HP Server Automation component is found on a satellite?

- A. Software Repository Cache
- B. Infrastructure Gateway
- C. Model Repository
- D. Data Access Agent

Correct Answer: A

QUESTION 7

What is the best description of the communication between the core and the managed servers?

- A. Primary - Secondary
- B. Multi - Master
- C. Server - Agent
- D. Client - Server

Correct Answer: C

QUESTION 8

Which core component bundle is often installed on multiple servers in the same core for redundancy and load balancing purposes?

- A. Multimaster Infrastructure
- B. Model Repository

- C. OS Provisioning
- D. Slice

Correct Answer: D

QUESTION 9

There is a set of components that make up one installation of HP Server Automation (SA). These components may be on one server or spread across multiple servers. In SA, what is this group of components running on one or more servers called?

- A. core
- B. infrastructure
- C. satellite
- D. multimaster

Correct Answer: A

QUESTION 10

Which reports exist in the HP Server Automation Client Reports tab?

- A. SAR reports
- B. Multimaster reports
- C. Virtualization reports
- D. Job reports

Correct Answer: C

QUESTION 11

What is a server compliance status based on? a server? compliance status based on?

- A. agent status
- B. Compliance policies
- C. Corporate IT policies
- D. server best practices

Correct Answer: B

QUESTION 12

The BSAE Subscription Service provides access to current regulatory compliance information (such as FISMA and Sarbanes-Oxley) and daily vulnerability alerts. What is this information used for in HP Server Automation?

- A. software policies
- B. security scans
- C. audit policies
- D. compliance scans

Correct Answer: C

QUESTION 13

Which compliance category uses a different mechanism than the others to gather its compliance information?

- A. Patch policy
- B. Audit policy
- C. App Config policy
- D. Software policy

Correct Answer: B

QUESTION 14

When looking at the Compliance view screen for a device, what is a possible button that might be available at the bottom of the screen?

- A. Export Report
- B. Refresh
- C. Remediate
- D. Schedule Scan

Correct Answer: C

QUESTION 15

When most operations are applied to a group that contains nested groups, the operation also applies to all the servers in the nested groups below the current group. Which operation is an exception to this rule?

- A. Patch policies
- B. Software policies
- C. App config policies
- D. Audit policies

Correct Answer: C

QUESTION 16

Who can view private device groups?

- A. the creator of the group and the super administrator
- B. the creator of the group and members of the creator's user groups
- C. anyone given permission by the super administrator
- D. only the creator of the group

Correct Answer: D

QUESTION 17

Where are permissions set for creating public device groups?

- A. Manage Servers and Groups section of the Server Automation Web Client
- B. Users and Groups tab of the Server Automation Web Client
- C. Opware Administration tab of the Server Automation Client
- D. Properties tab of the Public Groups section of the Server Automation Client

Correct Answer: B

QUESTION 18

What may be added to a private dynamic group?

- A. private user groups
- B. private device groups
- C. public user groups
- D. public server groups

Correct Answer: B

QUESTION 19

Which tool is used to open a Global Shell session?

- A. Server Automation Web Client

- B. Server Automation Client
- C. root command line session on the Server Automation core server running the slice
- D. SSH session on port 222 to the Server Automation core server running the Model Repository

Correct Answer: B

QUESTION 20

Which logs contain the stdout of scripts that are run from the Global Shell?

- A. Shell Stream logs
- B. Shell Event logs
- C. Shell Script logs
- D. Shell Output logs

Correct Answer: A

QUESTION 21

What is the default login directory when accessing the Global Shell?

- A. /home
- B. /home/user-name
- C. /
- D. /export/home/user-name

Correct Answer: B

QUESTION 22

Which utility enables you to log on to managed servers and run native commands from within a Global Shell session?

- A. rlogin
- B. ROSH
- C. SSH
- D. telnet

Correct Answer: B

QUESTION 23

Which ROSH syntax is used to copy a script to a managed server and run it?

- A. rosh -n server-name -l user-name command-name
- B. rosh -n server-name -l user-name -s file-name
- C. rosh -n server-name -l user-name -c file-name
- D. rosh -n server-name -l user-name --run file-name

Correct Answer: B

QUESTION 24

What is one of the ways HP Server Automation secures communications between components?

- A. TCP Wrappers
- B. SSL/TLS
- C. IPsec
- D. X.503 certificates

Correct Answer: B

QUESTION 25

How long are Server Automation security certificates valid, by default?

- A. 6 months
- B. 1 year
- C. 5 years
- D. 10 years

Correct Answer: D

QUESTION 26

Server Authentication enforces a very granular system of role-based access controls. Which parameter can security administrators use to set up authorization?

- A. users
- B. customer administrators
- C. facility
- D. Security policy

Correct Answer: C

QUESTION 27

In HP Server Automation, how long is the audit trail stored by default?

- A. 1 month
- B. 6 months
- C. 1 year
- D. 2 years

Correct Answer: D

QUESTION 28

Which external authentication source does HP Server Automation support?

- A. SmartCard
- B. Kerberos
- C. LDAP
- D. NIS+

Correct Answer: C

QUESTION 29

Which set of rules (which may contain individual checks) expresses the desired state of a managed server configuration objects (for example, a server file system directory structure or files, a server Windows Registry, or application configuration)?

- A. Snapshot
- B. Audit
- C. Compliance policy
- D. Compliance scan

Correct Answer: B

QUESTION 30

A snapshot specification can capture the state of the configuration on a server known to have a good configuration (a golden server). This can be used to compare against other target servers. How is this

To Read the [Whole Q&As](#), please purchase the [Complete Version](#) from [Our website](#).

Trying our product !

- ★ **100%** Guaranteed Success
- ★ **100%** Money Back Guarantee
- ★ **365 Days** Free Update
- ★ **Instant Download** After Purchase
- ★ **24x7** Customer Support
- ★ Average **99.9%** Success Rate
- ★ More than **69,000** Satisfied Customers Worldwide
- ★ Multi-Platform capabilities - **Windows, Mac, Android, iPhone, iPod, iPad, Kindle**

Need Help

Please provide as much detail as possible so we can best assist you.

To update a previously submitted ticket:



 One Year Free Update <p>Free update is available within One Year after your purchase. After One Year, you will get 50% discounts for updating. And we are proud to boast a 24/7 efficient Customer Support system via Email.</p>	 Money Back Guarantee <p>To ensure that you are spending on quality products, we provide 100% money back guarantee for 30 days from the date of purchase.</p>	 Security & Privacy <p>We respect customer privacy. We use McAfee's security service to provide you with utmost security for your personal information & peace of mind.</p>
---	---	--

Guarantee & Policy | Privacy & Policy | Terms & Conditions

Any charges made through this site will appear as Global Simulators Limited.

All trademarks are the property of their respective owners.