



H12-261^{Q&As}

HCIE-Routing & Switching (Written) V3.0

Pass Huawei H12-261 Exam with 100% Guarantee

Free Download Real Questions & Answers **PDF** and **VCE** file from:

<https://www.pass4itsure.com/h12-261.html>

100% Passing Guarantee
100% Money Back Assurance

Following Questions and Answers are all new published by Huawei
Official Exam Center

-  **Instant Download** After Purchase
-  **100% Money Back** Guarantee
-  **365 Days** Free Update
-  **800,000+** Satisfied Customers



**QUESTION 1**

When an advertised route is deleted from a BGP router, the BGP router sends an Update packet to withdraw the route. This Update packet carries the well-known mandatory attributes of the route to be withdrawn.

- A. True
- B. False

Correct Answer: A

QUESTION 2

Which of the following statements is true about the port mirroring on Huawei devices?

- A. Huawei devices support port mirroring on the control traffic sent to the CPU
- B. Huawei devices support flow-based port mirroring. The mirrored traffic can be copied onto multiple observing ports
- C. Traffic in the RSPAN is transmitted to observing ports in multicast mode
- D. When the observing port becomes congested, mirrored packets cannot be discarded because these packets have higher priority than service traffic

Correct Answer: A

QUESTION 3

In a BGP EVPN distributed gateway scenario, which of the following packet types is required to implement VM migration?

- A. Type 1
- B. Type 2
- C. Type 3
- D. Type 5
- E. Type 4

Correct Answer: B

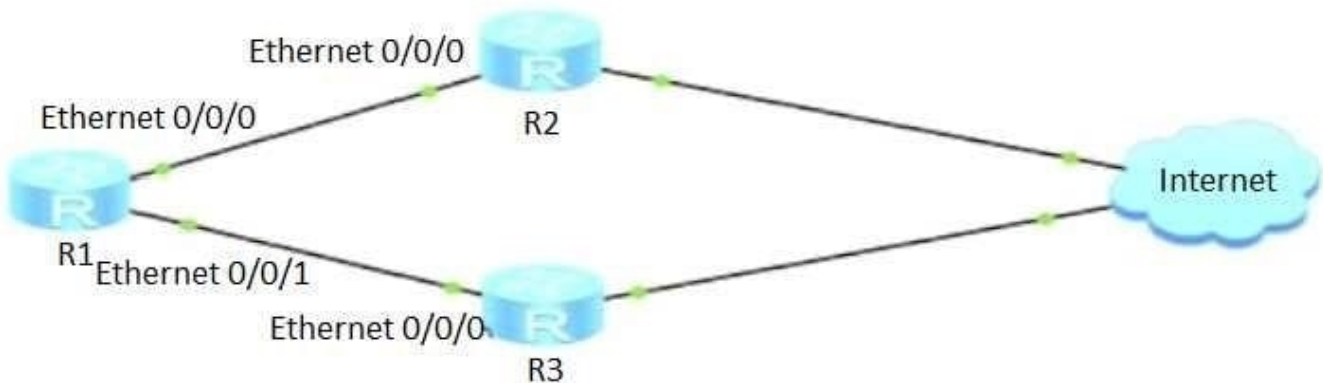
Reference: <https://support.huawei.com/enterprise/my/doc/EDOC1000180270/5d103d4d/configuring-vxlanin-distributed-gateway-mode-using-bgp-evpn>

QUESTION 4

As shown in the following figure, R1 can connect to the Internet through R2 or R3. EBGP connections are set up



between R1 and R2 and between R1 and R3. R2 and R3 reside in the same AS and advertise default routes using BGP. Which of the following methods can be used to enable traffic from R1 to the Internet to be preferentially forwarded by R2?



- A. On R2, set the Local_Pref value to 150 in the egress direction of R1
- B. On R1, set the MED attribute value to 150 in the ingress direction of R3
- C. On R1, set the Local_Pref attribute value to 150 in the ingress direction of R2
- D. On R2, set the MED attribute value to 150 in the egress direction of R1

Correct Answer: C

QUESTION 5

OSPF is running on a network. In OSPF, what LSA type would only cause an Incremental SPF calculation? (Multiple Choice)

- A. Type 3
- B. Type 4
- C. Type 1
- D. Type 2
- E. Type 5

Correct Answer: ABE

QUESTION 6

By default, WRED is configured on a newly deployed Huawei router. Which of following statements regarding WRED are true?

- A. When traffic exceeds the minimum threshold, WRED starts to discard all inbound traffic (tail drop).
- B. Traffic with low bandwidth is more likely to be discarded than traffic with high bandwidth.



- C. WRED selectively discards multiple TCP flows to avoid global synchronization.
- D. WRED can be used to set different drop thresholds and packet loss ratio for data packets with different priorities.

Correct Answer: CD

QUESTION 7

In a data communication session between two hosts, the session layer in the OSI model generally communicates with what other layer of the OSI model?

- A. The physical layer of the peer
- B. The peer's presentation layer
- C. The peer's session layer
- D. The peer's application layer
- E. The data link layer of the peer

Correct Answer: C

QUESTION 8

In order to reduce the number of OSPF, OSPF, and OSPF routes in some stub areas, a special area function protocol is opened. The following describes the characteristics of the special area correctly. Is it?

- A. Special area routers cannot establish OSPF neighbor relationships with regular area routers.
- B. Any area can be configured with a special area OSPF
- C. As -External-LSA Stub is sent to the area
- D. ASBR-Summary-LSA NSSA is allowed to be distributed to the X-ray area

Correct Answer: A

QUESTION 9

Both IS-IS CSNPs and OSPF DD packets describe the brief information about link state databases in MA network.

Which of the following statements regarding the two types of packets is true?

- A. After CSNPs and DD packets are received by the peer router, the peer router needs to send an acknowledgement message; otherwise, the packets need to be retransmitted.
- B. Once the neighbor relationship is established, CSNPs and DD packets are not sent.



C. The master/slave relationship in OSPF DD packet exchange is not bound to DR/BDR; and CSNPs are generated only by the DIS.

D. After CSNPs and DD packets are received by the peer router, the peer router does not need to send an acknowledgment message.

Correct Answer: D

QUESTION 10

Which of the following statements regarding BGP attributes is true?

A. A route can have only one value for the Community attribute.

B. The number of the neighboring AS is displayed to the right of the AS_Path list of a BGP routing entry.

C. The Local_Pref attribute is exchanged only between EBGP peers and is not advertised to other ASs.

D. When advertising a route learned from an EBGP peer to an IBGP peer, the BGP speaker does not change the Next_Hop attribute of the route.

Correct Answer: B

QUESTION 11

When a router within the HW network makes a forwarding decision, the _____ is always used to select the best route from those installed in the routing table.

A. Routing process ID

B. Longest prefix match

C. Administrative Distance

D. Router ID

E. Peer ID

Correct Answer: B

QUESTION 12

Which of the following statements regarding MP-BGP is false?

A. The MP_UNREACH_NLRI attribute of Update packets does not contain path information

B. MP_REACH_NLRI and MP_UNREACH_NLRI are optional transitive attributes

C. The complete MP_REACH_NLRI attribute structure contains the address family, next hop, and prefix information

D. MP-BGP can be used to allocate labels



Correct Answer: B

QUESTION 13

In the () data encapsulation, the first VLAN of the first field is 802.1Q 6bit.

- A. True
- B. False

Correct Answer: B

QUESTION 14

Which of the following statements are true about RIPng? (Multiple Choice)

- A. RIPng does not have an authentication mechanism
- B. Each RIPng update packet contains a maximum of 25 routes
- C. RIPng supports MD5 authentication
- D. RIPng uses the link local address to send update packets
- E. RIPng supports a maximum of 32 hops

Correct Answer: AD

QUESTION 15

Which of the following statements regarding route-policies are true?

- A. If more than one node is defined in a route-policy, the matching mode of at least one node must be permit
- B. An advanced ACL can be used in a route-policy to filter routes
- C. A route-policy can filter only default routes
- D. If the entry permit :: 0 less-equal 128 is defined, all IPv6 routes are permitted

Correct Answer: A

[H12-261 VCE Dumps](#)

[H12-261 Practice Test](#)

[H12-261 Study Guide](#)