



H12-224^{Q&As}

HCIP-Routing & Switching (Fast Track) V2.0

Pass Huawei H12-224 Exam with 100% Guarantee

Free Download Real Questions & Answers **PDF** and **VCE** file from:

<https://www.pass4itsure.com/h12-224.html>

100% Passing Guarantee
100% Money Back Assurance

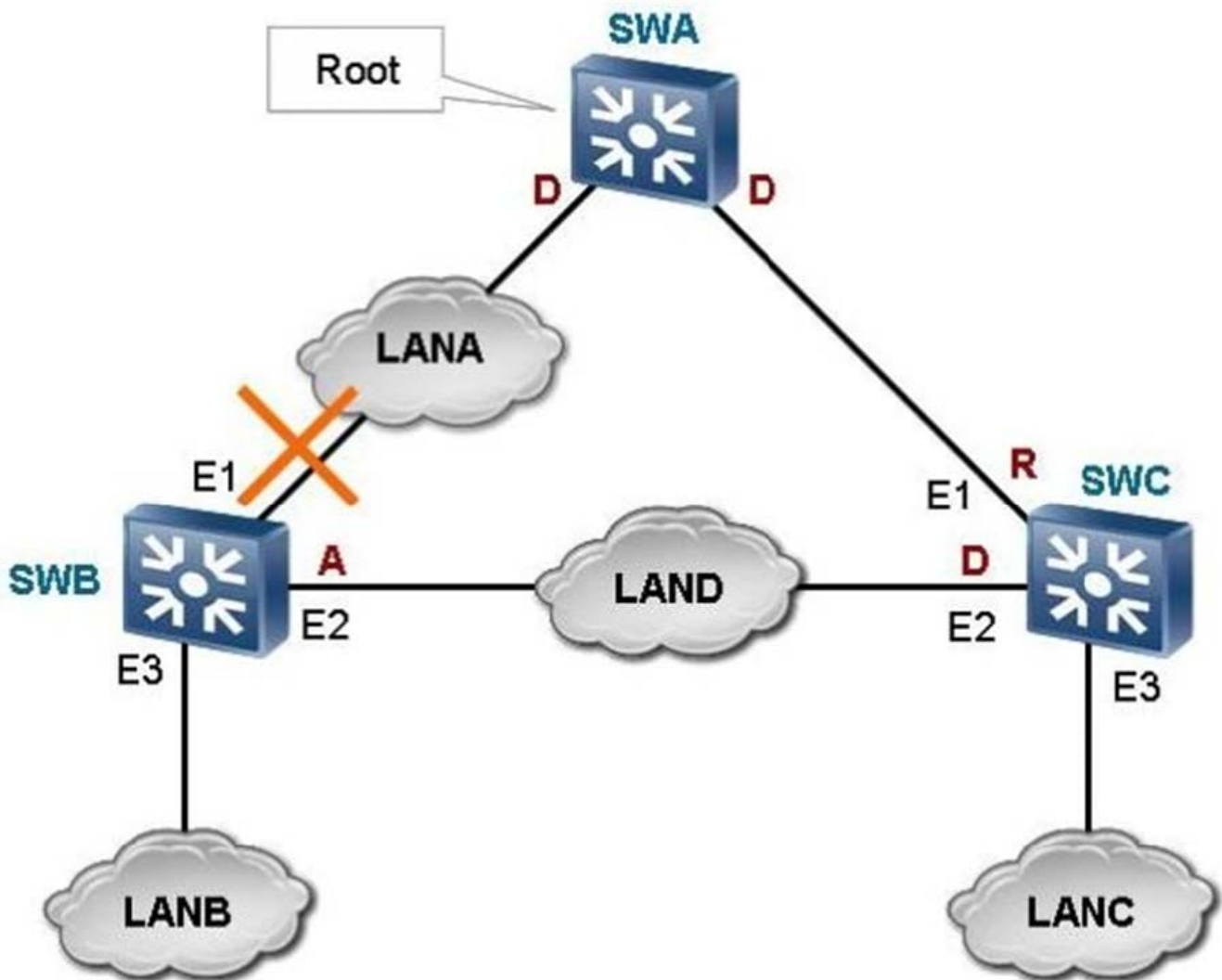
Following Questions and Answers are all new published by Huawei
Official Exam Center

-  **Instant Download** After Purchase
-  **100% Money Back** Guarantee
-  **365 Days** Free Update
-  **800,000+** Satisfied Customers



**QUESTION 1**

Which of the following statements about VRRP fast switchover are true? (Choose three.)



- A. When VRRP is used to track a BFD or EFM session, if a tracked BFD or EFM session status changes, the BFD or EFM module notifies the VRRP module of the change. After that, the VRRP module implements a rapid master/backup switchover.
- B. A VRRP backup group can monitor a peer BFD session, a link BFD session, and a normal BFD session at the same time. In addition, it can monitor the interface status.
- C. When the status of a BFD session detected by a VRRP backup group changes, the master/slave switchover of routers in the VRRP backup group occurs by changing priorities of the master and slave routers.
- D. A VRRP backup group can monitor several BFD sessions at the same time. The status changes of these BFD sessions affect each other.

Correct Answer: ABC



QUESTION 2

QoS includes which of the following aspects? (Choose three.)

- A. Transmission bandwidth
- B. Transmission delay and jitter
- C. Packet loss ratio
- D. Network security

Correct Answer: ABC

QUESTION 3

In traffic policing using two token buckets and two-rate, when the CIR is set to 1 Mbit/s and the PIR is set to 2 Mbit/s, what is the maximum transmission rate for the traffic in green?

- A. 1 Mbit/s
- B. 2 Mbit/s
- C. 3 Mbit/s
- D. 4 Mbit/s

Correct Answer: A

QUESTION 4

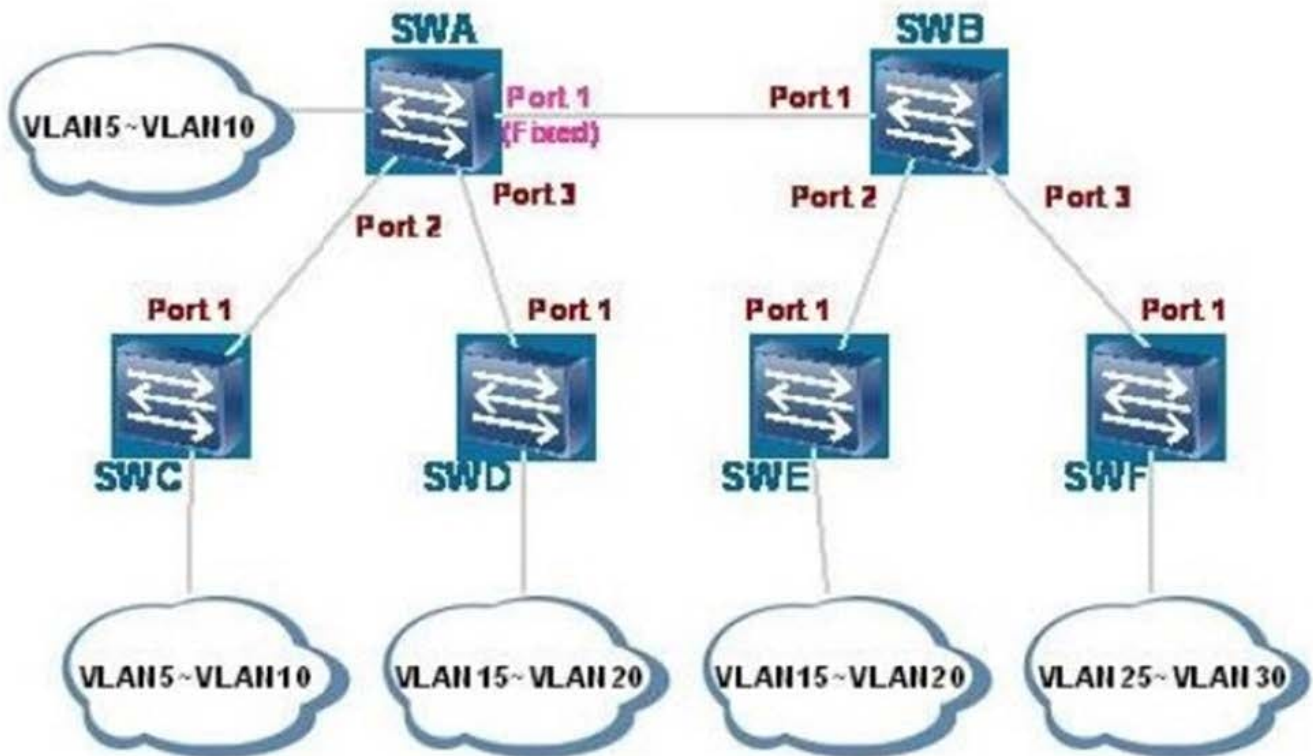
The IPSec function on the Eudemon supports NAT traversal.

- A. True
- B. False

Correct Answer: A

QUESTION 5

What are the same fields in RSTP BPDUs and STP BPDUs? (Choose two.)



- A. TCN
- B. TC
- C. TCA
- D. All of the above

Correct Answer: BC

QUESTION 6

In OSPF protocol, which of the following elements are used to describe one link? (Choose three.)

- A. Link ID
- B. Data
- C. Network Mask
- D. Metric

Correct Answer: ABD

QUESTION 7



What are the functions of an IGMPv2 Query message? (Choose three.)

- A. A router sends IGMPv2 Query messages to collect group memberships of receiver hosts.
- B. A router sends IGMPv2 Query messages to elect a querier.
- C. If a router can periodically send IGMPv2 Query messages, it indicates that the router runs properly.
- D. Based on IGMPv2 Query messages, receiver hosts can obtain the address of a querier and unicast Report messages to the querier.

Correct Answer: ABC

QUESTION 8

In MSTP, each MSTI calculates an independent spanning tree by using the RSTP algorithm.

- A. TRUE
- B. FALSE

Correct Answer: A

QUESTION 9

Which of the following statements regarding LACP are true? (Choose all that apply.)

- A. LACP is based on IEEE802.3au.
- B. The local device sends LACPDUs to exchange information with the remote end.
- C. Devices at both ends determine the Active side based on the LACP system priority and system ID.
- D. Devices at both ends determine active interfaces based on the LACP priority and ID of the interface on the passive side.

Correct Answer: BC

QUESTION 10

If you have run the dot1x port-method command with the port parameter specified (port-based 802.1x authentication), the maximum number of users on an interface changes to 1. In this case, which statements are true? (Choose two.)

- A. You can run the dot1x max-user command to change the maximum number of access users.
- B. You cannot run the dot1x max-user command to set the maximum number of access users.
- C. You need to run the undo dot1x port-method command, and then set the maximum number of access users.
- D. All of the above



Correct Answer: BC

QUESTION 11

Enterprise services have strict requirements for QoS in networks. Which of the following counters can be used to indicate network QoS? (Choose three.)

- A. Stability
- B. Bandwidth
- C. Delay
- D. Jitter
- E. Security

Correct Answer: BCD

QUESTION 12

The dot1x authentication-method command is used to set the 802.1x authentication mode. Which is the most secure authentication mode?

- A. PAP
- B. EAP
- C. CHAP
- D. EAP-TTLS

Correct Answer: C

QUESTION 13

Which statements about prerequisites to establishing a BGP peer relationship are true? (Choose two.)

- A. BGP peers have been manually configured.
- B. A TCP connection has been established between two neighboring routers.
- C. BGP peers have exchanged routing information.
- D. MD5 authentication has been configured on BGP peers.

Correct Answer: AB

QUESTION 14



Which of the following link efficiency mechanism can be used to compress RTP and TCP packet headers?

- A. IPHC
- B. LFI
- C. PPP
- D. All of the above

Correct Answer: A

QUESTION 15

Which of the following PHB types are defined in IETF DiffServ? (Choose three.)

- A. Default PH
- B. Class-Selector PHB
- C. Fast Forwarding PHB
- D. Assured Forwarding PHB

Correct Answer: ABD

[H12-224 VCE Dumps](#)

[H12-224 Practice Test](#)

[H12-224 Braindumps](#)