

100% Money Back Guarantee

Vendor: FileMaker

Exam Code: FM0-307

Exam Name: Developer Essentials for FileMaker 12 Exam

Version: Demo

QUESTION NO: 1 DRAG DROP

Match the FileMaker Server 12 hosting technology with the maximum number of concurrent client connections.

- 50
- 100
- 200
- 250
- Unlimited

- place here IWP
- place here ODBC/JDBC
- place here Custom Web Publishing

Answer:

- 50
- 100
- 200
- 250
- Unlimited

- 200 IWP
- Unlimited ODBC/JDBC
- 100 Custom Web Publishing

Explanation:

- 200 IWP
- Unlimited ODBC/JDBC
- 100 Custom Web Publishing

C:\Pasban Work\Cert Paper Exams\FileMaker\FM0-306\FM306\FM306\1.JPG

QUESTION NO: 2 DRAG DROP

Identify the default ports used in FileMaker Server 12 (choices may be used more than once).

- 80
- 443
- 521
- 5003
- 8080
- 16000
- 16001
- 50003

- place here Web access (HTTP)
- place here Admin Console access
- place here FileMaker Pro 12 client access
- place here Remote Container encrypted video streaming

Answer:

- 80
- 443
- 521
- 5003
- 8080
- 16000
- 16001
- 50003

- 443 Web access (HTTP)
- 16000 Admin Console access
- 16001 FileMaker Pro 12 client access
- 50003 Remote Container encrypted video streaming

Explanation:

- 80
- 521
- 5003
- 8080

- 443 Web access (HTTP)
- 16000 Admin Console access
- 16001 FileMaker Pro 12 client access
- 50003 Remote Container encrypted video streaming

C:\Pasban Work\Cert Paper Exams\FileMaker\FM0-306\FM306\FM306\2.JPG

QUESTION NO: 3

What will a recursive custom function do when a stack limit is exceeded?

- A. returns !
- B. returns ?
- C. returns Error 1203: Unexpected end of calculation
- D. produces a spinning beach ball (Mac OS X) or a rotating cursor (Windows)

Answer: C

Explanation:

QUESTION NO: 4

What is the maximum number of recursive calls that can be made utilizing a custom function in FileMaker Pro 12 Advanced?

- A. 10, 000
- B. 32, 000
- C. 50, 000
- D. 64, 000

Answer: D

Explanation:

QUESTION NO: 5

What is the maximum number of files that can be hosted on FileMaker Server 12 Advanced?

- A. 100
- B. 125
- C. 250
- D. 999

Answer: B

Explanation:

QUESTION NO: 6

What is the theoretical maximum record count in a FileMaker Pro 12 file?

- A. 100 million records
- B. 4 billion records
- C. 8 trillion records
- D. 64 quadrillion records
- E. 128 quadrillion records

Answer: A

Explanation:

QUESTION NO: 7 DRAG DROP

Identify the default ports used in FileMaker Server 12 (choices may be used more than once).

- 80
- 443
- 521
- 5003
- 8080
- 16000
- 16001
- 50003

- place here Admin Console access
- place here Secure web access (HTTPS)
- place here FileMaker Go 12 client access
- place here Remote Container video streaming

Answer:

- 80
- 443
- 521
- 5003
- 8080
- 16000
- 16001
- 50003

- 16000 Admin Console access
- 8080 Secure web access (HTTPS)
- 5003 FileMaker Go 12 client access
- 521 Remote Container video streaming

Explanation:

16000	Admin Console access
8080	Secure web access (HTTPS)
5003	FileMaker Go 12 client access
521	Remote Container video streaming

C:\Pasban Work\Cert Paper Exams\FileMaker\FM0-306\FM306\FM306\7.JPG

www.Pass4itSure.com

QUESTION NO: 8

Which two statements are true about field indexing in FileMaker Pro 12? (Choose two.)

- A. Calculation fields cannot be indexed.
- B. Indexing improves the speed at which sorts are performed.
- C. To establish a relationship between two fields, both fields are required to be indexed.
- D. A field must be indexed in order for Auto-complete using previously entered values to function.
- E. Minimal indexing indicates that either the value index or the word index has been created, but not both

Answer: D,E

Explanation:

QUESTION NO: 9

Given two tables in FileMaker Pro 12 with the following fields and table occurrences:

Team Table

TeamID [Number, Serialized, Unique, Required]
PlayerID [Number]
Team_Name

Player Table

PlayerID [Number, Serialized, Unique, Required]
TeamID [Number]
Player_Name



What two methods can be used to add a portal to a layout based on the Players table, which

shows only the names of the current player's teammates, but not the current player's name?
(Choose two.)

A. base the portal on the relationship

Players:: Team ID = Teammates:: Team ID

And use a portal filter based on the calculation Players:: PlayerID Self

B. base the portal on the relationship

Players::TeamID = Teammates::TeamID

Set a sort order of PlayerID. Ascending on the relationship, and

Configure the portal to have an Initial row value of 2.

C. bases the portal on the multi-predicate relationship:

Players::TeamID = Teammates::TeamID

AND Players: PlayerID Teammates:: PlayerID

D. base the portal on the relationship

Players:: TeamID = Teammates:: TeamID

And use a portal filter based on the calculation

Players:: PlayerID Teammates:: PlayerID

Answer: C,D

Explanation:

QUESTION NO: 10

Which statement is true about the Relationships Graph in FileMaker Pro 12?

A. Table occurrences can represent tables from external JDBC data sources.

B. A single Relationships Graph can include references to no more than 256 external files.

C. A set of relationships between tables can be created as a loop if every table occurrence in the loop has a unique name.

D. The Allow creation of records in this table via this relationship setting can be selected between two table occurrences if the relationship includes only equality (=, or) matches between fields.

Answer: D

Explanation:

QUESTION NO: 11

Which statement is true given two FileMaker Pro 12 files, Vendors and Products, if a table from Products appears on the Vendors Relationships Graph?

- A. Scripts in Vendors can reference data from global variables defined in Products.
- B. Layouts from Products can be displayed in the same window as layouts from Vendors.
- C. Vendors can contain multiple valid external FileMaker Data Sources referencing Products.
- D. A table occurrence from Products is required on the Vendors Relationships Graph in order to call a script in Products from Vendors

Answer: C

Explanation:

QUESTION NO: 12

Which two statements are true about container fields that are configured to Store container data externally in FileMaker Pro 12? (Choose two)

- A. Container data stored externally using Secure storage is encrypted.
- B. FileMaker Pro 12 can store a maximum of 64 million external files per database file.
- C. It is possible to customize the directory location where FileMaker Pro 12 will store external container data.
- D. Once a container field has been configured to store data internally, the data must be re-imported if the field is changed to store data externally.

Answer: A,C

Explanation:

QUESTION NO: 13

For which field type can the field validation setting Strict data type: Numeric Only be applied?

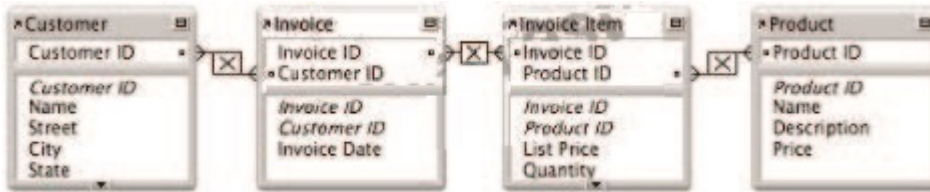
- A. Text
- B. Date
- C. Integer
- D. Summary
- E. Timestamp

Answer: A

Explanation:

QUESTION NO: 14

Consider a FileMaker Pro 12 database with the following tables and fields:



Assuming only the above relationships between table occurrences, using sorting if necessary, which two actions can be performed? (Choose two.)

- A. Create a value list that shows all Invoices for a chosen Customer
- B. Create a value list on a Product layout which displays all Customers
- C. Find all of the Customers who have ever ordered a specific Product
- D. Create a portal to display each Product that has been ordered by a Customer
- E. Display all records from the Customer table in a portal on a layout for an Invoice Item record

Answer: B,E

Explanation:

QUESTION NO: 15

Which two statements are true about FileMaker Pro 12 relationships? (Choose two.)

- A. Valid relationships can include unindexed match fields.
- B. The % (contains) operator can be used for join criteria that include one unindexed match field.
- C. When editing match fields for a relationship, no more than 16 pairs of match fields can be used.
- D. A relationship defined with an X (cross product) will only include records with non-matching match field values.
- E. A relationship defined with an X (cross product) match will allow the Delete related records in this table when a record is deleted in the other table option.

Answer: A,E

Explanation:

QUESTION NO: 16

A text field called FirstLast in FileMaker Pro 12 is set to auto-enter the following formula:

FirstName & " " & LastName

FirstName and LastName are text fields in the same table. The option Do not evaluate if all referenced fields are empty is unchecked. The option Do not replace existing value of field (if any) is checked.

Under which two circumstances will the value of the calculation be inserted into the FirstLast field? (Choose two.)

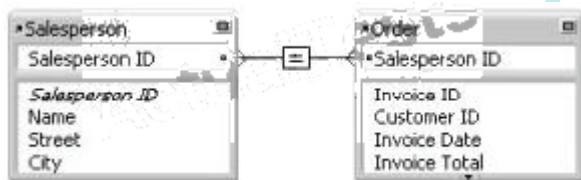
- A. a record is first created
- B. each time the value of the FirstName or LastName field is modified
- C. a user selects the menu item Records > Relookup Field Contents
- D. any field value on the record is modified and the FirstLast field is empty
- E. the FirstName or LastName field is modified and the FirstLast field is empty

Answer: A,E

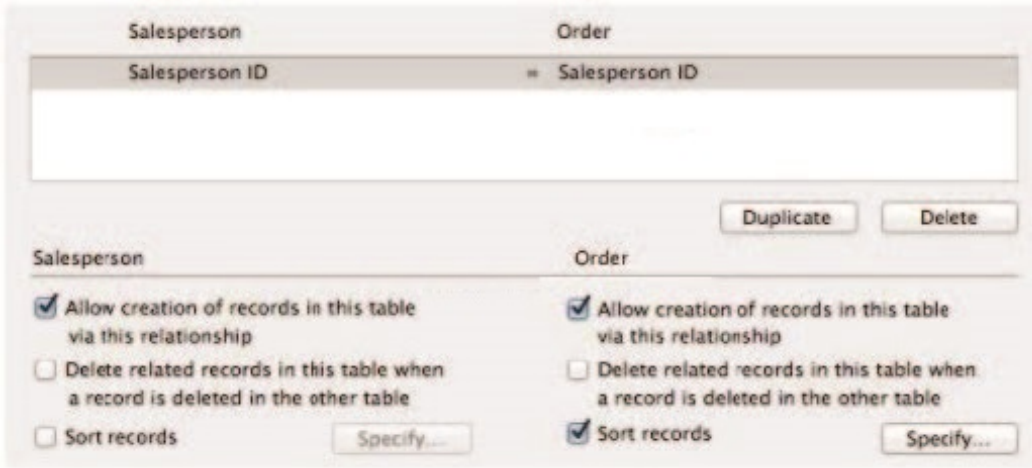
Explanation:

QUESTION NO: 17

Consider a FileMaker Pro 12 database with the following tables:



And the relationship is configured as follows:



Which two statements are true about this situation? (Choose two.)

- A. It is possible to create new Salesperson records by importing data into the Order table.
- B. Users may create new Order records by entering data into a portal on a Salesperson Detail layout.
- C. A merge field can be used on layouts based on the Salesperson table occurrence to show a list of all of a salesperson's orders.
- D. Removing the sort from the Order side of the relationship will not change the way that Order records are displayed in a portal on a Salesperson Detail layout.
- E. List (Salesperson:: Salesperson ID) calculated from the context of the Order table returns a list containing the Salesperson ID for the current order.

Answer: B,E

Explanation:

QUESTION NO: 18

Given the following relationship graph:



Without inspecting the data, what can be assumed about this database?

- A. In the Event table, the Event id has no index.

- B. For each Task record there will be exactly one related Volunteer record.
- C. Each record in the Task table will represent a unique combination of Volunteer ID and Event ID
- D. The relationship between Task and Event will not allow the Allow creation of records ... nor the Delete related records ... settings to be enabled for the Event table.

Answer: A

Explanation:

QUESTION NO: 19

Which statement is true about supplemental fields added to a table occurrence based on an External ODBC Data Source that uses MySQL?

- A. These fields may only be of type Summary or Calculation
- B. These fields may be indexed unless they are of type Summary.
- C. These fields will be added to the table definitions within MySQL when the Sync button in the FileMaker Pro 12 Manage Database dialog is used.
- D. These fields will be lost if the schema of the MySQL table is changed and then the Sync button in the FileMaker Pro 12 Manage Database dialog is used.

Answer: A

Explanation:

QUESTION NO: 20

A FileMaker Pro 12 database has two tables called Company and Customer. Both tables have a number field called CompanyID. The two tables have a relationship between them formed by the condition Company:: CompanyID = Customer:: CompanyID. Each table also has a text field called CompanyName. The CompanyName field in the Customer table is defined to Auto-enter calculated value, with the formula: Company:: CompanyName and the option Do not replace existing value of field unchecked.

Under which circumstances will the value of the CompanyName field on a Customer record be refreshed with data from the related Company record?

- A. any time the Customer record is modified
- B. any time the index of the Company:: CompanyID field is rebuilt
- C. any time the related Company:: CompanyName field is modified
- D. any time the CompanyID field on the Customer record is modified
- E. any time a user chooses Refresh Window from the Records menu while viewing the Customer

record

Answer: D

Explanation:

QUESTION NO: 21

Which statement is true about container fields in FileMaker Pro 12?

- A. If one container field in a given database file is set to Store container data externally, all container fields in that file must store their data externally
- B. If a file larger than a database's Maximum container file size value is inserted into a container field. FileMaker Pro 12 will automatically compress the inserted file.
- C. If a container field is set to Store container data externally, then the Store only a reference to the file option is automatically selected for any file inserted into that field.
- D. If the setting Generate and store thumbnails for images is chosen in the Manage Containers dialog for a given database file, all container fields in that file will have thumbnails generated.

Answer: D

Explanation:

QUESTION NO: 22

Which two are directly selectable options in the Validation tab of the field options dialog in FileMaker Pro 12? (Choose two.)

- A. Existing value
- B. Strict data type: Integer
- C. Strict data type: Time of Day
- D. Strict datatype: Alphanumeric
- E. Minimum number of characters

Answer: A,C

Explanation:

QUESTION NO: 23

Which two statements are true about fields using global storage in FileMaker Pro 12? (Choose two.)

- A. Globally stored fields are always empty at the start of a user's session.
- B. Fields using global storage can be used as match fields in a relationship.
- C. A container field using global storage may not be configured to store its data externally.
- D. Globally stored fields can only be accessed from within the file in which they are defined.
- E. Changes to data in globally stored fields in a shared file are stored when the server cache is flushed.

Answer: B,C

Explanation:

QUESTION NO: 24

What is possible when working with shadow fields from an External ODBC Data Source?

- A. creating a two-column value list
- B. saving formatted text (bold, italic, etc.)
- C. checking the Auto-complete using previously entered values checkbox in the Field/Control Setup dialog
- D. inserting binary data such as a PDF file, provided the field options are set to Store container data externally

Answer: A

Explanation:

QUESTION NO: 25

Which three field options may be set for a shadow field from an External ODBC Data Source? (Choose three.)

- A. Validation: not empty
- B. Validation: unique value
- C. Validation: existing value
- D. Auto-enter creation timestamp
- E. Auto-enter serial number, on creation
- F. Storage: automatically create indexes as needed

Answer: A,D,E

Explanation:

QUESTION NO: 26

A table in a FileMaker Pro 12 database has a text field CompanyName. The following field validation options are set for this field:

- Validate data in this field only during data entry
- Allow user to override during data entry
- Require not empty
- Display custom message if validation fails

A user imports a set of records into this table. Some records have no value in the CompanyName field. What will occur?

- A.** All of the records will be imported. No error message will be displayed.
- B.** The user will see the custom error message, but the import will continue if the user overrides the error.
- C.** All records with a value for CompanyName will be imported. The user will see the specified custom message.
- D.** All records with a value for CompanyName will be imported. The user will see an error dialog from the FileMaker Pro application stating that some records could not be imported due to errors, along with a count of those records.

Answer: A

Explanation:

QUESTION NO: 27

Given a text field Full Name, Auto-Enter by Calculated value has been selected in the field options, using the following formula:

Name First &." "& Name Last

The developer then disables (unchecks) the option Do not replace existing value of field (if any).

For which two cases will the results of the specified formula be inserted into the field Full Name? (Choose two.)

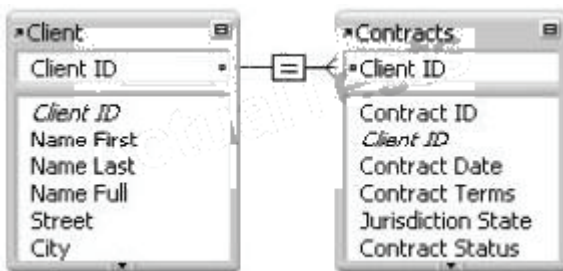
- A.** When the record is first created
- B.** When the field Full Name itself is modified
- C.** Only when the field Full Name was previously empty
- D.** When either of the fields Name First or Name Last is modified
- E.** When the field Full Name itself is modified and the record is committed

Answer: A,D

Explanation:

QUESTION NO: 28

A new database is created with two tables, Client and Contracts. The only modification made on the Relationships Graph is to establish a relationship between them which is set to delete related records in Contracts when a record in Client is deleted.



What happens when the Client table occurrence is deleted from the Relationships Graph?

- A. Since it is the only occurrence of the Client table on the graph, it can not be deleted.
- B. Any records in the Contracts table that were related to matching Client records are deleted.
- C. The formula in the calculation field Name Full (defined as Name First & " " & Name Last) will be broken.
- D. Any records in the Contracts table that were related to matching Client records will have values in the client id field deleted.

Answer: C

Explanation:

QUESTION NO: 29

Consider two FileMaker files, Collection and Item, where tables from Item are included in the Relationships Graph of Collection.

Which method will preserve all functionality in the Relationships Graph of Collection after renaming the Item file to Artifact?

- A. Choose File > Manage > External Data Sources... for Collection and reset the file path
- B. Click the Repair Reference button in the Relationships Graph for Collection and reset the file path
- C. Delete referenced Item table occurrences in the Relationships Graph for Collection and recreate them for Artifact
- D. Select referenced Item table occurrences in the Relationships Graph for Collection and right-click to choose Rename File Source...

Answer: A

Explanation:

QUESTION NO: 30

Which two FileMaker Pro 12 objects will display data contents even when unrelated to the current layout's table occurrence? (Choose two.)

- A. Merge variable
- B. Indexed timestamp field
- C. A text field from a shadow table
- D. Globally stored number field placed in a portal
- E. A container field defined with the Store as reference only option enabled

Answer: A,D

Explanation:

QUESTION NO: 31

Given the following relationship graph:



Without inspecting the data, what is known about this database?

- A. The Event table occurrence references a table from an external ODBC Data Source
- B. There can be zero or one, but no more than one, Event record related to any Task record.
- C. The corner arrows indicate all three table occurrences reference tables from external data sources.
- D. From a layout based on the Event table occurrence, a portal could be drawn showing both related Task and Volunteer data.

Answer: D

Explanation:

QUESTION NO: 32

Which two features of FileMaker Pro 12 require indexing in order to work? (Choose two.)

- A. The List function
- B. Auto-complete using existing values
- C. Dynamic value lists based on FileMaker tables
- D. Dynamic subsummary reports in Browse mode
- E. The ExecuteSQL calculation function with a JOIN in the query

Answer: B,C

Explanation:

QUESTION NO: 33

Which statement is true of a container field set to Store container data externally in FileMaker Pro 12?

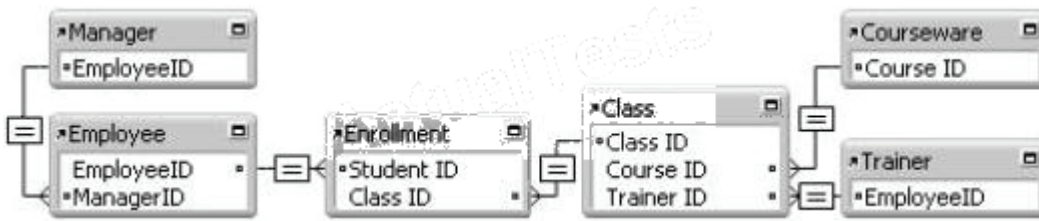
- A. The field cannot have the Interactive content option selected in the Inspector in Layout mode.
- B. Data will not be stored externally if the file is transferred to an iOS device and used via FileMaker Go 12.
- C. Externally stored container data will not be backed up by FileMaker Server 12 scheduled backup routines.
- D. Externally stored container data can be stored on a local hard drive or a Storage Area Network (SAN) device, but cannot be stored on a Network Attached Storage (NAS) device.

Answer: B

Explanation:

QUESTION NO: 34

Given the following Relationships Graph for a FileMaker Pro 12 database, where Employee, Manager, and Trainer are all table occurrences sharing the same source table:



Assuming the relevant fields also exist in these tables, which two sets of data can be shown in portals without modifying the graph? (Choose two.)

- A. A portal of students that have not enrolled in a class
- B. A portal of trainers that have taught their own manager
- C. A portal of the classes that have been attended by a manager's team
- D. A portal showing a non-repeating list of courseware titles taught by a trainer
- E. A portal of classes in which a manager enrolled with one or more of the manager's team

Answer: C,D

Explanation:

QUESTION NO: 35

For which two is it possible to specify conditional formatting? (Choose two.)

- A. A Tab panel
- B. The body part of a layout
- C. The title of a chart object
- D. A merge symbol (e.g. « CurrentDate »)
- E. An inserted graphic formatted as a button
- F. A rectangle object being used as a graphical background

Answer: A,D

Explanation:

QUESTION NO: 36

Which statement is true regarding layout themes in FileMaker Pro 12?

- A. A Touch theme (e.g. River Touch) must be used for a layout to be compatible with iOS devices.
- B. Changing a layout to the Classic theme of the Basic theme group will leave all objects and their styles unaffected.
- C. The style attributes for a new object (e.g. field or text box) added to a layout will be determined by the layout part in which it is created
- D. Changing a layout's theme will optionally update all layouts sharing the same original theme by choosing Update matching layouts in the Change Theme dialog.
- E. Holding down the Control (Windows) or Command (Mac OS X) keys while clicking the Apply theme styles button of the Inspector, the object styles of the currently selected object will be applied to all objects of the same type on the layout.

Answer: C

Explanation:

QUESTION NO: 37

Which statement is true regarding layout objects in FileMaker Pro 12?

- A. Along with line styles, corner radius settings are set individually for each tab panel in a tab control.
- B. Fill patterns can only be applied to shapes (i.e. rectangles, rounded rectangles, and ovals) in Layout mode.
- C. A text object set as a field's Label using the Accessibility Inspector is automatically grouped with the field.
- D. Object Effects (Engraved, Embossed, and Drop Shadow) can only be applied to fields, buttons, or text objects.
- E. An object Name set using the Inspector is the same as the object Title set using the Accessibility Inspector and can be edited in either place.

Answer: A

Explanation:

QUESTION NO: 38

Which statement is true about portals in FileMaker Pro 12?

- A. Conditional formatting can be applied to a portal row.
- B. An OnObjectEnter script trigger applied to a portal will activate once for each portal row as a

user tabs from field to field across rows.

C. A portal set with only a bottom anchor containing fields set with only a top anchor will increase row height as the layout is expanded vertically.

D. Records in a portal can become unsorted if the developer unchecks "Keep records in sorted order" in the Portal Setup > Sort Records dialog.

E. If there are multiple portals on a layout, the Go to Portal Row [First] script step will activate the portal closest to the top left corner of the layout.

Answer: B

Explanation:

QUESTION NO: 39

The text field productCode has a script trigger set to activate OnObjectKeystroke and runs the following script:

```
If [Length (File::productCode) > 7]
```

```
Exit Script [Result: 0]
```

```
Else
```

```
Set Field [File::productCode; File::productCode & "-"]
```

```
End If
```

The field productCode has the value of 12-1415. A user types a 6 in the field at the end of the value.

What is the resulting value in the field after the script trigger has processed?

A. 12-1415

B. 12-1415-

C. 12-14156

D. 12-14156-

E. 12-1415-6

Answer: E

Explanation:

QUESTION NO: 40

Which two statements are true if a layout is configured with an OnRecordLoad script trigger enabled in both Browse and Find modes? (Choose two.)

- A. It will be activated by entering Find mode.
- B. It will be activated by creating a new window.
- C. It will be activated when records are imported.
- D. It will not be activated while switching records in Table view.

Answer: A,B

Explanation:

QUESTION NO: 41

Which default layout theme will be chosen by FileMaker Pro 12 for layouts automatically created when a new table is added to the file?

- A. The theme of the most recently edited layout
- B. The theme of the most recently viewed layout
- C. The theme of the most recently created layout
- D. The Classic theme of the Basic theme group
- E. The Cool theme of the Classic Refined theme group
- F. The Cool Gray theme of the FileMaker Millennium theme group

Answer: F

Explanation:

QUESTION NO: 42

Which statement is true about the sort order of data in portals in FileMaker Pro 12?

- A. The sort setting applied to the portal in Layout mode can only include fields from the portal's table.
- B. If the relationship that defines the portal's record set includes a Sort records setting, unindexed fields in the sort setting will be ignored.
- C. If the relationship that defines the portal's record set includes a Sort records setting, any sort setting applied to the portal in Layout mode will be ignored.
- D. If there are multiple sorted relationships defined between the layout's table occurrence and the portal's table occurrence, the portal records will be sorted based upon the relationship closest to the portal's table occurrence.
- E. If there are multiple sorted relationships defined between the layout's table occurrence and the

portal's table occurrence, the portal records will combine the Sort records settings of all of those relationships, sub-sorting by the relationships closest to the portal's table occurrence.

Answer: D

Explanation:

QUESTION NO: 43

A layout contains a portal that is based on a relationship configured to allow creation of related records. The portal object has the name Porta1_1.

Which technique can be used to navigate to a field in the empty row at the end of Portal_1?

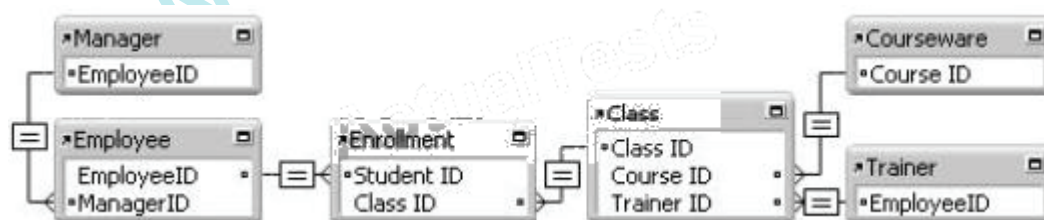
- A. use the Go To Field script step targeting the field in the desired portal, then use the Go To Portal Row [Last] script step
- B. assuming a field in the desired portal is in the tab order, use the arrow keys to activate the portal, then tab to the desired row and field
- C. use the Go to Object [Object Name: "Portal_1"] script step, followed by the script step Go to Portal Row [Select; Last]
- D. use the Go To Portal [Portal_1] script step, followed by the Go To Portal Row [Last] script step and the Go To Field script step targeting the desired field

Answer: A

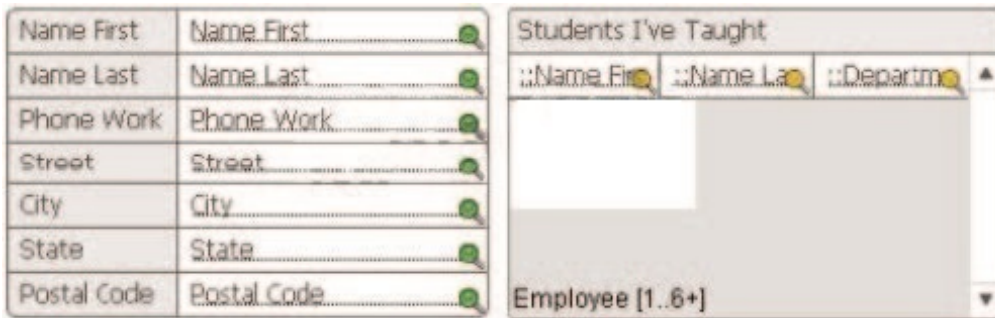
Explanation:

QUESTION NO: 44

Given the following Relationships Graph for a FileMaker Pro 12 database, where Employee, Manager, and Trainer are all table occurrences sharing the same source table:



The database has the following layout based on the Trainer table occurrence:



If a developer modifies the layout to be based on the Manager table occurrence instead of Trainer, what happens to the data that is displayed?

- A.** The trainer's name, phone, and address fields will no longer display data, and the portal will show all employees related to the manager record.
- B.** The trainer's name, phone, and address fields will change to show the manager's data, and the portal shows all employees related to the manager record.
- C.** The trainer's name, phone, and address fields will change to show the manager's data, but the portal will need to be edited to Show related records from: the Manager table occurrence as well.
- D.** The name, phone, and address fields will now show data for the first related trainer of the first class of the first employee of the current manager, and the portal will show all employees related to the manager record.
- E.** The name, phone, and address fields will now show data for the first related trainer of the first class of the first employee of the current manager, and the portal will show all employees that have been enrolled in that trainer's

Answer: D

Explanation:

QUESTION NO: 45

Which statement is true regarding resizing layout parts and objects in FileMaker Pro 12?

- A.** If no Autosizing anchors are set for any object in a layout part, the layout part will expand to fill the window as it is resized, but all objects will maintain a constant distance from the center of the layout part.
- B.** A body part with the top and bottom Autosizing anchors checked in the Inspector will expand or contract its height in List View as the window is resized instead of changing the number of rows displayed.
- C.** If a field in a tab panel has all four of its Autosizing anchors checked in the Inspector, and the tab control has none, then the field can expand maximally to the edges of the tab panel as the window is resized.
- D.** To set the layout part styles to expand or contract horizontally with window resizing, the gray

line defining the right edge of the layout can be selected enabling the Autosizing anchors to be set in the Inspector.

E. If multiple fields in a portal and the portal itself all have their left and right Autosizing anchors checked in the Inspector, then the fields will expand proportionally within the portal as the window is resized horizontally.

Answer: A

Explanation:

QUESTION NO: 46

Which two statements are true about using Current Found Set as the data source for a chart in FileMaker Pro 12? (Choose two.)

- A.** A user can generate a stacked bar chart if they specify one or more fields that contain a return-delimited list as the data series.
- B.** A user can generate a scatter chart if they specify more than one Y-Axis that contains a return-delimited list as the data series.
- C.** If a user selects the option Summarized groups of records, sorts the data, and puts the chart in a Trailing Grand Summary, the chart will display one data point per sort group.
- D.** If a user selects the option Summarized groups of records, sorts the data by two criteria, and puts the chart in a Subsummary part based on the first sort criteria, the chart will display one data point per secondary sort group.

Answer: C,D

Explanation:

QUESTION NO: 47

For which two script triggers can the processing of the triggering event be canceled using Exit script [False]? (Choose two.)

- A.** OnTabSwitch
- B.** OnLayoutEnter
- C.** OnViewChange
- D.** OnWindowOpen
- E.** Install OnTimer Script

Answer: A,D

Explanation:

QUESTION NO: 48

Which two events can activate an OnObjectEnter script trigger? (Choose two.)

- A. Clicking a button
- B. Tabbing to a button
- C. Navigating from one row in a portal to another
- D. Switching from one tab to another in a tab control

Answer: B,C

Explanation:

QUESTION NO: 49 DRAG DROP

A layout has a script trigger assigned to activate OnRecordCommit and a field on the same layout with script triggers assigned to activate on OnObjectSave, OnObjectExit and OnObjectValidate. The field is modified and the user exits the field without navigating to another object on the layout.

OnObjectExit	OnObjectSave	OnObjectValidate	OnRecordCommit
place here	First		
place here	Second		
place here	Third		
place here	Fourth		

Answer:

OnObjectExit

OnObjectSave

OnObjectValidate

OnRecordCommit

OnObjectValidate

First

OnObjectSave

Second

OnObjectExit

Third

OnRecordCommit

Fourth

www.Pass4itSure.com

Explanation:

OnObjectValidate	First
OnObjectSave	Second
OnObjectExit	Third
OnRecordCommit	Fourth

C:\Pasban Work\Cert Paper Exams\FileMaker\FM0-306\FM306\FM306\49.JPG

QUESTION NO: 50

Which two actions could generate a line chart that contains multiple lines? (Choose two.)

- A. set the chart to use data from Related Records and specify multiple data series, each based on a related number field
- B. set the chart to use data from Current Found Set and specify multiple data series, each referencing a single number field
- C. set the chart to use data from Current Found Set and specify a single data series that contains a return delimited list of values
- D. display a found set of data in Table View, sort by two fields, then click on the header of one of the sort fields and create a Quick Chart using both sorted fields

Answer: A,B

Explanation:

QUESTION NO: 51

A user manually switches from one layout to another.

Which two script triggers, if set on both layouts, will always activate? (Choose two.)

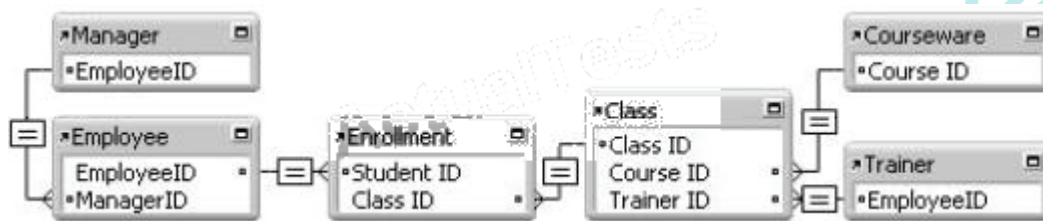
- A. OnLayoutExit
- B. OnModeEnter
- C. OnRecordLoad
- D. OnViewChange
- E. OnLayoutChange

Answer: A,C

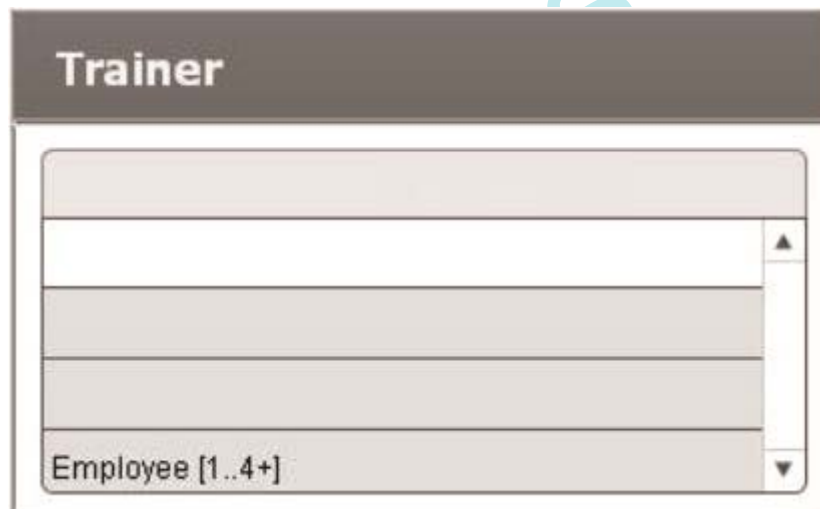
Explanation:

QUESTION NO: 52

Given the following Relationships Graph for a FileMaker Pro 12 database, where Employee, Manager, and Trainer are all table occurrences sharing the same source table:



The database has the following layout, based on the Trainer table occurrence:



If a developer adds the following fields to the portal:

Class:: Class Name

Employee:: Name

Manager:: Name

Which data is shown in the portal?

- A. Each of the trainer's classes, the first employee enrolled in each class, and the trainer as manager for that employee
- B. Each of the trainer's classes, the first employee enrolled in each class, and the first related manager for each employee
- C. The first class each employee is enrolled in, all employees managed by the trainer, and the trainer as manager for each employee
- D. The first class each employee is enrolled in, all employees enrolled in any of the trainer's classes, and the first related manager for each employee
- E. The first of the trainer's classes in all rows, all employees enrolled in any of the trainer's classes, and the first related manager for each employee

Answer: E

Explanation:

QUESTION NO: 53

Which three statements are true about a Web Viewer object placed on a layout in a FileMaker Pro 12 file? (Choose three.)

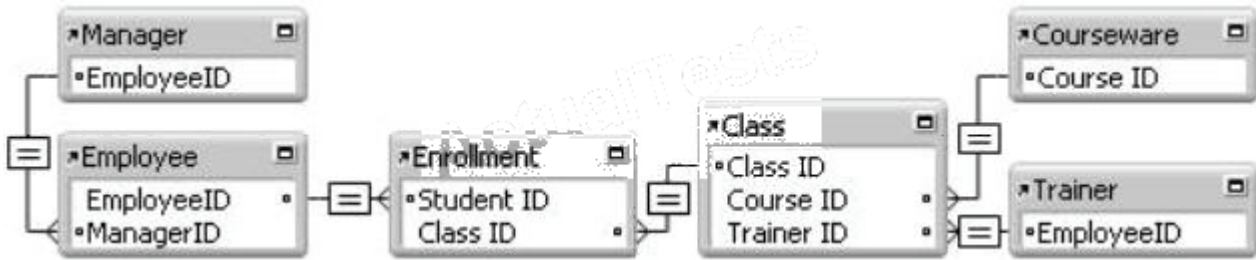
- A. It can be defined as a button.
- B. It can support ActiveX controls (on Windows).
- C. It can display web pages in List View rows, but not Table View rows.
- D. It can be configured to show a Back button in the Web Viewer Setup dialog.
- E. It can be configured to log into a secured web sites by sending the current user's FileMaker Pro 12 account name and password.

Answer: A,B,C

Explanation:

QUESTION NO: 54

Given the following Relationships Graph in a FileMaker Pro 12 database:



A layout is based on the table occurrence Class and a portal shows records from the table occurrence Employee

If the field Trainer:: Name is placed into the portal, what is the result?

- A. The text <Field Missing> is displayed in each row of the portal.
- B. Each row shows the name of each enrolled employee's first related trainer.
- C. The name of the first related trainer for the class is repeated in each row of the portal.
- D. The name of the trainer for the first class enrolled by the first Employee record of the portal is repeated in each row of the portal.

Answer: C

Explanation:

QUESTION NO: 55

Which method can be used to sort related records within a portal in a FileMaker Pro 12 database?

- A. in Browse Mode, right-click on a field in the portal and choose Sort Ascending from the contextual pop-up menu
- B. in Layout Mode, select the portal then choose Sort records in the Behavior section of the Data tab of the Inspector
- C. in the Relationships Graph, change the Sort records setting in the Specify Table dialog for the portal's table occurrence
- D. run a script using the Sort Records by Field script step, choosing one of the portal's related fields and checking the Sort only related records option
- E. change the Sort records setting in the Edit Relationship dialog for the last relationship leading to the portal's table occurrence from the context of the layout's table occurrence on the Relationships Graph

Answer: E

Explanation:

QUESTION NO: 56

Which two techniques could be used to generate the data points for a pie chart? (Choose two.)

- A. Concatenate multiple number fields from the current record into a return-delimited list
- B. Set up multiple data series, each of which points to a number field in the current record
- C. Specify a summary field from a related set of records as the data series and put the chart in a Subsummary layout part
- D. Specify a summary field from the current found set as the data series and put the chart in a Leading Grand Summary layout part

Answer: A,D

Explanation:

QUESTION NO: 57

A database has a Customer table and an Order table. On a layout based on the Customer table there is a portal showing related orders for the current calendar year. The portal does not include a filter formula. There is a calculation field in the Customer table, zSumOrders, that adds up the total amount of all the customer's orders for the year. zSumOrders is included on the layout.

Assuming no changes to the data, what may cause the displayed value of zSumOrders on a customer record to change?

- A. In Layout Mode, move the zSumOrders field into the Orders portal row
- B. Add one or more sort criteria to the relationship on which the Orders portal is based
- C. Add a portal filter using Filter Portal Records so only unpaid orders will be displayed
- D. Change the criteria of the portal's relationship to further limit the set of records displayed in the Orders portal

Answer: D

Explanation:

QUESTION NO: 58

Which statement is true of container fields in FileMaker Pro 12?

- A. A user can insert a file using Store only a reference to the file if the container is set to Store container data externally
- B. OLE objects can be inserted into container fields if the field is set for Interactive content using

the Inspector in Layout mode.

C. Files stored (not referenced) in containers fields defined to Store container data externally can be opened by a double-click in Browse mode.

D. A container optimized for Interactive content using the Inspector in Layout mode will render HTML files as web pages in Browse mode.

E. A container must be optimized for Interactive content using the Inspector in Layout mode to allow drag and drop insertion of files into the container.

Answer: A

Explanation:

QUESTION NO: 59

Which statement is true about the Filter Portal Records feature in FileMaker Pro 12?

A. The portal filter formula must refer to at least one field in the immediately related table.

B. The feature requires one or more additional relationships to be added to the Relationships Graph.

C. The portal filter formula may not refer to any globally stored fields, summary fields, or unstored calculation fields.

D. There can be one unique filter formula applied for each portal state (Normal State, In Focus, Hover, or Pressed)

E. Aggregate functions (e.g., Sum, Count) based on the portal's relationship will not be affected by the portal's filter formula.

Answer: E

Explanation:

QUESTION NO: 60

Which two statements are true about OnTimer triggers? (Choose two.)

A. They only run when the application is idle.

B. OnTimer triggers are configured in the File Options dialog.

C. Different OnTimer scripts can be installed in different windows.

D. Days and times can be specified when the OnTimer script activates.

Answer: A,C

Explanation:

QUESTION NO: 61

A file has the following script specified for OnLastWindowClose:

Allow User Abort [Off]

Exit Script [Result; False]

Commit Records/Requests [No dialog]

Assume the Layout Setup dialog for the current layout is set to Save record changes automatically. When a user attempts to close the file, what will be the result?

- A. The file will close and the current record will be committed.
- B. The file will close and the current record will not be committed.
- C. The file will remain open and the current record will be committed.
- D. The file will remain open and the current record will not be committed.

Answer: C

Explanation:

QUESTION NO: 62

Which statement is true regarding layout themes in FileMaker Pro 12?

- A. Changing a layout theme may reposition a field on the layout to align it to the theme's default grid
- B. Objects with custom styles applied using the Inspector will be unaffected by changing a layout's theme.
- C. A layout theme determines the padding space (vertical and horizontal) surrounding content for displaying text and container fields.
- D. Clicking an object while holding the Command (Mac OS X) or Control (Windows) key will reset the default object style for any new objects of the same type on that layout.

Answer: C

Explanation:

QUESTION NO: 63

Which statement is true regarding applying object styles in FileMaker Pro 12?

- A. The Format Painter will only apply styles to objects on the same layout.
- B. The Format Painter cannot be used to apply the style of one layout part to another.
- C. The Format Painter tool can only apply styles associated with the Normal State of an object.
- D. The Copy Object Style and Paste Object Style buttons of the Inspector will only work among layouts of the same file.
- E. Holding down the Alt (Windows) or Option (Mac OS X) key while clicking the Copy Object Style button in Inspector will only copy the styles for the currently selected object state.

Answer: B

Explanation:

QUESTION NO: 64

Which two statements are true regarding object styles in FileMaker 12? (Choose two.)

- A. A text box will not display Hover state styles.
- B. The Alternate Record state is unique to the Body part.
- C. Only the Normal State is recognized for object styles in FileMaker Go 12.
- D. Only the Normal State will function in Table View for fields in the Body part.
- E. Hover state styles for a field will supersede Conditional Formatting styles when a mouse pointer is hovering over the field.

Answer: A,D

Explanation:

QUESTION NO: 65

Which two statements are true if a file is configured with an OnWindowOpen script trigger? (Choose two.)

- A. The script will be triggered when a file is first opened.
- B. A script parameter can be passed to name the new window.
- C. The script will not be triggered when a Dialog Window (Modal) is opened.
- D. The script will be triggered when a snapshot link file is used to open the file.
- E. The action of opening the window can be canceled by use of the Exit Script [False] script step

Answer: A,D

Explanation:

QUESTION NO: 66

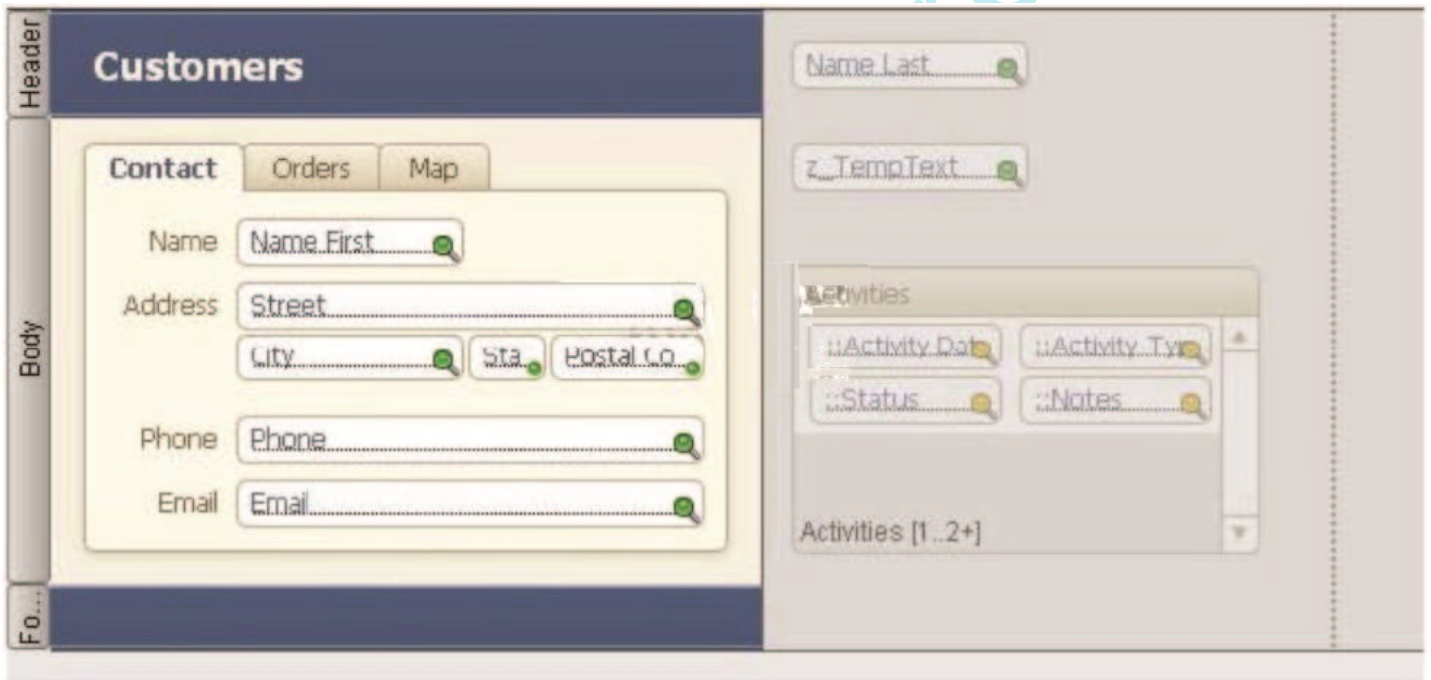
Which two statements are true about script triggers? (Choose two.)

- A. Layout script triggers can be activated by scripts.
- B. An object can have only one script trigger associated with it.
- C. Script triggers can only be assigned to field objects and tab controls.
- D. Object script triggers will not activate if the layout is set to Table view.
- E. A script trigger can be set to activate when the user switches between tab panels.

Answer: A,E

Explanation:

QUESTION NO: 67



Assume the user has full privileges to view and modify all data in the file. Which two statements are true in this situation? (Choose two.)

- A. The Name Last field is in the Header part.
- B. The user will be able to edit the contents of z_TempText in Table view.
- C. If viewed as a form in Browse mode, Quick Find will ignore the data in the Name Last field.
- D. The Name Last field will be excluded from the list of available fields in the Sort Records... dialog for the Current Layout
- E. The Activities portal, Name Last field, and z_TempText field are within the page boundary and thus will be included when printed in Form view.
- F. The script step insert Text [Select; Customer:: z_TempText; "Complete"] will result in Error 102 ("Field is missing") and z_TempText will be empty.

Answer: A,B

Explanation:

QUESTION NO: 68

Given the following function:

Substitute (myText ; ["abc" ; "XYZ"] ; ["XY2" ; "abc"])

If the field myText contains "abc-xyz", what is the result?

- A. abc-abc
- B. abc-xyz
- C. XYZ-abc
- D. XYZ-xyz

Answer: B

Explanation:

QUESTION NO: 69

What can be done with an ExecuteSQL calculation function?

- A. Count the number of unique values in a field from a set of related records.
- B. Populate a field in a set of related records with the result of a calculation function.
- C. Find the number of records in the current found set that match certain query criteria.
- D. Insert a new record into a table and populate it with values from global script variables.

Answer: A

Explanation:

QUESTION NO: 70

Given a custom function created in FileMaker Pro 12 Advanced defined as Explode (str):

```
Case ( Length ( str ) > 1 ;  
  Explode ( Left ( str ; Length ( str ) - 1 ) )  
  & "q" &  
  Left ( str ; Length ( str ) - 1 ) ;  
  str )
```

What is the result of Explode ("Bob")?

- A. Bo
B
- B. B
Bo
Bo
- C. B
B
Bo
- D. B
Bo
Bob
- E. Bob
Bo
B

Answer: C

Explanation:

QUESTION NO: 71

Given the following function:

Position! "Poppy Pepper"; "P" ; 2 ; 2)

What is returned?

- A. 0
- B. 3
- C. 4
- D. 7

Answer: C

Explanation:

QUESTION NO: 72

Given the following formula in a calculation field that returns a Text result:

Let (tmp = "2 * 5" ; Evaluate (Quote (tmp)))

What will be returned?

- A. The value 10
- B. The value tmp
- C. The value 2 *5
- D. The value "10", quotes included
- E. The value "tmp", quotes included
- F. The value "2 * 5", quotes included

Answer: C

Explanation:

QUESTION NO: 73

Given the following formula;

Substitute ("JoHn" ; ["J" ; "0"] ; ["0" ; "H"] ; ["H" ; "N"] ; ["N" ; "n"])

What is the result?

- A. nonn
- B. nnnn
- C. OoNn
- D. OHNn

Answer: A

Explanation:

QUESTION NO: 74

Given a text field myText that contains "red-blue-green", which two formulas could be used to extract the word "blue" from the field? (Choose two.)

- A. Filter (myText ; "blue")
- B. MiddleWords (myText; 2 ; 2)
- C. PatternMatch (myText ; "blue")
- D. GetValue (Substitute { myText ; "-" ; "¶" } ; 2)
- E. Middle (myText; Position (myText ; "-" ; 1 ; 1)+ 1 ; 4)

Answer: D,E

Explanation:

QUESTION NO: 75

Given the following function:

```
Let ( [
    name = "Rufus, Wainright, Smithers, Ltd., Inc.";
    x = MiddleWords ( name ; 2 ; 3 ) ;
    y = WordCount ( name )
] ;
    Right ( x ; y )
)
```

What is returned?

- A. , Ltd
- B. Ltd..
- C. hers,
- D. thers
- E. Wainr

Answer: A

Explanation:

QUESTION NO: 76

Which statement is true about the ExecuteSQL calculation function in FileMaker Pro 12?

- A. The ExecuteSQL function can fetch a maximum of 32,767 rows per query.
- B. The only query that can be performed by the ExecuteSQL function is a Select.
- C. An ExecuteSQL function can only modify the database schema if the user has [Full Access] privilege set or if it is executed from a script running with full access privileges.
- D. The ExecuteSQL function requires that a valid Data Source Name (DSN) has been configured either on the FileMaker Server 12 or for each FileMaker Pro 12 client that will access the function.

Answer: B

Explanation:

QUESTION NO: 77

Given the following formula:

Case (Children > 1 and Bedrooms = Children; "Overcrowded" ;

Children > 2 and Bedrooms = Children; "Crowded" ;

Children < 4 or Bedrooms > 1; "Comfortable"

)

Assuming the value of Children is 3 and the value of Bedrooms is 3, what is the result?

- A. Crowded
- B. Comfortable
- C. Overcrowded
- D. Overcrowded Crowded Comfortable
- E. Returns no result

Answer: C

Explanation:

QUESTION NO: 78

Which function returns a unique, unchanging identifier of a computer or device accessing a FileMaker database?

- A. Get (UUID)
- B. Get (PersistentID)
- C. Get (SystemGUID)

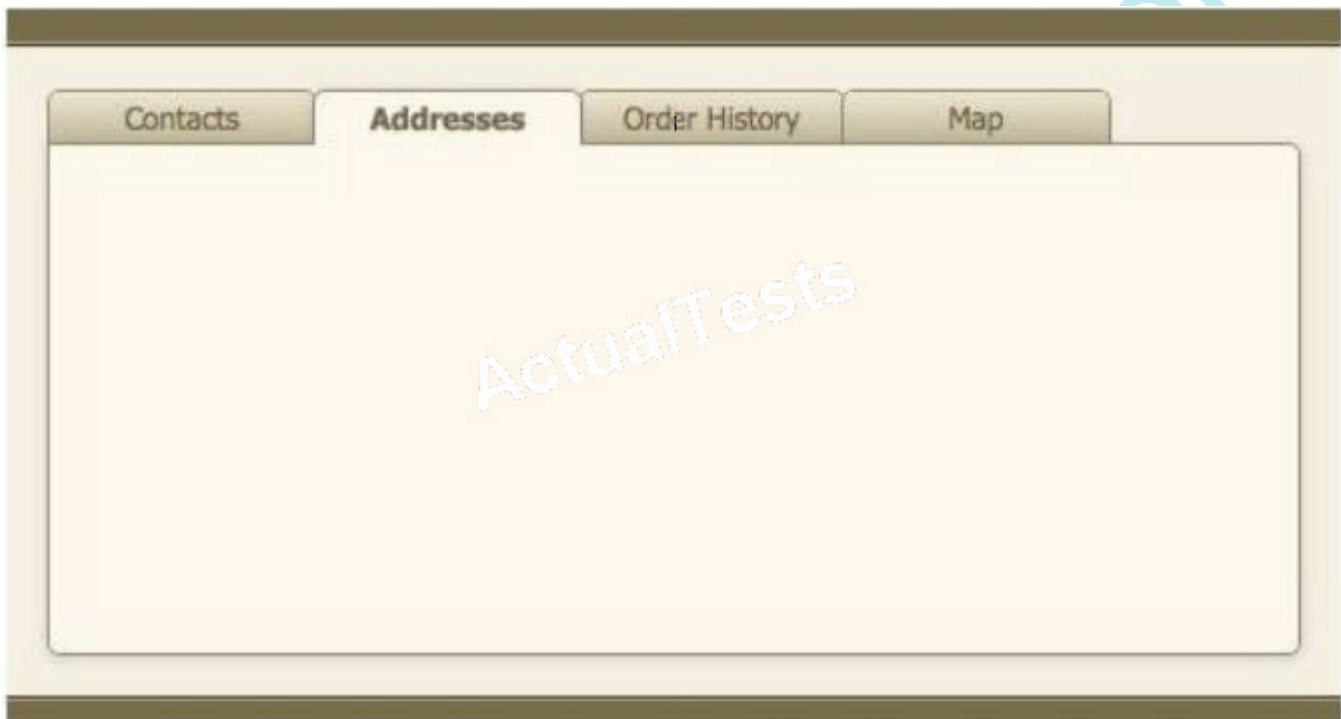
- D. Get (SystemNICAddress)
- E. Get (SystemMACAddress)

Answer: B

Explanation:

QUESTION NO: 79

The tab control object shown below is configured with an OnTabSwitch script trigger.



Which formula could be used in a conditional test to detect if the user clicked on the "Map" tab panel?

- A. Get (ActiveTabPanel) = 4
- B. Get (TriggerTargetTabPanel) = "Map"
- C. GetValue (Get (TriggerTargetTabPanel); 1) = 4
- D. PatternCount (Get (ActiveTabPanel); "Map") > 0
- E. GetObjectName (Get (TriggerTargetTabPanel)) = "Map"

Answer: C

Explanation:

QUESTION NO: 80

Which formula returns "05.2012" given a date field myDate that contains the date May 20, 2012?

- A. GetAsDate (myDate ; "MM-YYYY")
- B. Month (myDate) & "-" & Year (myDate)
- C. Right ("0" & Month (myDate); 2) & "-" & Year (myDate)
- D. RightWords (Filter (GetAsText (myDate); "xx-xx-xxxx"); 2)

Answer: C

Explanation:

QUESTION NO: 81

Given the following two calculation fields, Time1 and Time2:

Time1 (Calculation, Time result) = Time (15 ; 50 ; 15)

Time2 (Calculation, Time result) = Time1 + 600

What is the value of Time2?

- A. 1:50:15
- B. 4:00:15
- C. 16:00:15
- D. 25:50:15

Answer: C

Explanation:

QUESTION NO: 82

Given a digital image in a Container field, which two can be done using calculation functions in FileMaker Pro 12? (Choose two.)

- A. Embed metadata into the image
- B. Crop the image to a custom aspect ratio
- C. Determine the size of the image (in bytes)
- D. Retrieve the date and time the image was created
- E. Create a thumbnail image that is 50 percent of the size of the original image

Answer: C,E

Explanation:

QUESTION NO: 83

Given the following formula:

```
Case (
  PatternCount (Name ; " " ) > 3 ; RightWords (Name ; 2) ;
  Position (Name ; " " ; 1 ; 1) > 0 ; LeftWords (Name ; 2) ;
  MiddleWords (Name ; 2 ; 2)
)
```

If the field Name contains "John Q. Adams, Jr.", what will the formula return?

- A. Q.
- B. JohnQ
- C. Q.Adams
- D. Adams, Jr.

Answer: B

Explanation:

QUESTION NO: 84

What can be retrieved using one of the Get functions?

- A. The list of users logged into a file
- B. The list of fields in the current sort order
- C. The list of FileMaker plug-ins installed on the user's computer
- D. The list of script triggers defined for a named object on a layout
- E. The list of unique IDs for the current window's found set of records

Answer: C

Explanation:

QUESTION NO: 85

Given the following return-delimited data in a Team field of a FileMaker Pro 12 database:

Andy Jones

Bernie Lee

Carry Lane

Which formula would result in the string "Bernie Lee" (without quotes or leading/trailing carriage returns) from Team?

- A. ListValues (Team ; 2)
- B. Middle (Team ; 12 ; 10)
- C. GetItem (Team ; "¶" ; 2)
- D. MiddleValues (Team ; 2 ; 1)
- E. Trim (MiddleWords (Team ; 3 ; 4))

Answer: B

Explanation:

QUESTION NO: 86

Which formula returns the calendar quarter (1, 2, 3, 4) of a date contained in a field called myDate?

- A. Int (Month (myDate) / 3)
- B. Mod (Month (myDate); 3) + 1
- C. Ceiling (Month (myDate) / 3)
- D. Let (m = Month (myDate) ;
Case (m > 0 ; 1 ; m > 3 ; 2 ; m > 6 ; 3 ; 4)
)
- E. Let (m = Month (myDate) ;
Choose (m ; 1 ; 1 ; 1 ; 2 ; 2 ; 2 ; 3 ; 3 ; 3 ; 4 ; 4 ; 4)
)

Answer: C

Explanation:

To Read the [Whole Q&As](#), please purchase the [Complete Version](#) from [Our website](#).

Trying our product !

- ★ **100%** Guaranteed Success
- ★ **100%** Money Back Guarantee
- ★ **365 Days** Free Update
- ★ **Instant Download** After Purchase
- ★ **24x7** Customer Support
- ★ Average **99.9%** Success Rate
- ★ More than **69,000** Satisfied Customers Worldwide
- ★ Multi-Platform capabilities - **Windows, Mac, Android, iPhone, iPod, iPad, Kindle**

Need Help

Please provide as much detail as possible so we can best assist you.

To update a previously submitted ticket:



 One Year Free Update <p>Free update is available within One Year after your purchase. After One Year, you will get 50% discounts for updating. And we are proud to boast a 24/7 efficient Customer Support system via Email.</p>	 Money Back Guarantee <p>To ensure that you are spending on quality products, we provide 100% money back guarantee for 30 days from the date of purchase.</p>	 Security & Privacy <p>We respect customer privacy. We use McAfee's security service to provide you with utmost security for your personal information & peace of mind.</p>
---	---	--

Guarantee & Policy | Privacy & Policy | Terms & Conditions

Any charges made through this site will appear as Global Simulators Limited.

All trademarks are the property of their respective owners.