



EX0-104^{Q&As}

TMap Next Foundation

Pass EXIN EX0-104 Exam with 100% Guarantee

Free Download Real Questions & Answers **PDF** and **VCE** file from:

<https://www.pass4itsure.com/ex0-104.html>

100% Passing Guarantee
100% Money Back Assurance

Following Questions and Answers are all new published by EXIN
Official Exam Center

-  **Instant Download** After Purchase
-  **100% Money Back** Guarantee
-  **365 Days** Free Update
-  **800,000+** Satisfied Customers





QUESTION 1

When customer data is entered, it is mandatory to specify an e-mail address. Which test design technique can be used to test the above?

- A. Data Cycle Test
- B. Process Cycle Test
- C. Syntactic Test

Correct Answer: C

QUESTION 2

Which activity takes place in the Preparation phase?

- A. the test object intake
- B. allocating test units and test techniques
- C. determining the test basis
- D. collection of the test basis

Correct Answer: D

QUESTION 3

See the following specification:

IF	customer no. > 200 AND (group=330 OR article=action OR customer years >=10)
	TI ICN discount = 10%
	IF customer no. > 500 AND region code = 4
	THEN invoice type = A
	ELSE
	invoice type = C
	ENDIF
ELSE	invoice type = C
ENDIF	

How many test situations can be distinguished for this specification when the coverage type decision points modified condition/decision is used?

- A. 2



- B. 6
- C. 8
- D. 64

Correct Answer: C

QUESTION 4

See the decision and test situations below: $R = (A \text{ AND } B) \text{ OR } C$

1.A=false	B=true	C=false
2.A=false	B=true	C=false
3.A=true	B=true	C=false

Which test situation is missing if the coverage type decision points modified condition/decision coverage is used?

A.

A=true	B=true	C=true
--------	--------	--------

B.

A=true	B=false	C=false
--------	---------	---------

A. Option A

B. Option B

Correct Answer: B

QUESTION 5

What is the definition of valuation? What is the definition of valuation?

- A. Evaluation gives insight in the actual and future status of the end product.
- B. Evaluation is a process that gives insight into and advice on quality and related risks.
- C. Evaluation is assessing the interim products in the system development process.

Correct Answer: C

QUESTION 6

Problems can be prevented by looking closely at the way the starting point for the test execution must be structured and



which process must be deployed when using it. Which problem does this not prevent?

- A. production disruptions
- B. a deteriorating starting point
- C. testing gets increasingly expensive

Correct Answer: A

QUESTION 7

Which defect has an internal cause that can be solved within the test team?

- A. a defect in the test basis
- B. a defect in the test specification
- C. a defect in the test object

Correct Answer: B

QUESTION 8

There are two parties in the V model:

- *
the supplying party
- *
the accepting party

Which system development phase or test phase is not performed by the supplying party?

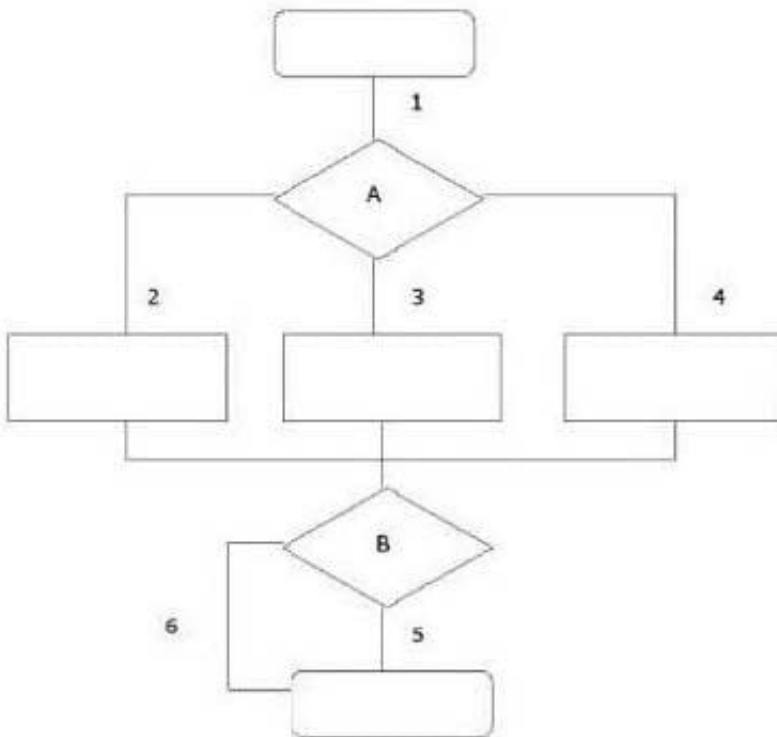
- A.
Functional design
- B.
Realization
- C.
System test
- D.
Technical design

Correct Answer: D



QUESTION 9

See the illustration below:



Which test situations can be differentiated when the coverage type paths test depth level 2 is used?

- A. 1-2; 2-3; 3-4; 2-4; 2-5; 2-6; 3-5; 3-6; 4-5; 4-6; 5-6
- B. 1-2; 1-3; 1-4; 2-5; 3-5; 4-5; 2-6; 3-6; 4-6
- C. 1-2-5; 1-2-6; 1-3-6; 1-3-5; 1-4-6; 1-4-5

Correct Answer: B

QUESTION 10

Which test design technique can be used to test performance?

- A. Data Cycle Test
- B. Process Cycle Test
- C. Real-Life Test



Correct Answer: C

[EX0-104 PDF Dumps](#)

[EX0-104 Practice Test](#)

[EX0-104 Braindumps](#)