

100% Money Back Guarantee

Vendor: Ericsson

Exam Code: ECP-102

Exam Name: Ericsson Certified Technology – IP

Version: Demo

QUESTION NO: 1

Which two statements are correct about link-state routing protocols? (Choose two.)

- A. Packets are routed based upon the shortest path to the destination.
- B. Paths are chosen based upon the number of hops to the destination.
- C. The exchange of advertisement is triggered by a change in the network.
- D. In a multipoint network, all routers exchange routing tables directly with all the routers.

Answer: A,C

QUESTION NO: 2

An edge router forwards a mixture of VoIP and IPTV traffic over the same port.

Which two QoS scheduling algorithms would you use to assure good VoIP call quality when the port is congested? (Choose two.)

- A. PQ
- B. WFQ
- C. PWFQ
- D. WRED

Answer: A,C

QUESTION NO: 3

Which three techniques allow for the co-existence of IPv4 and IPv6 networks? (Choose three.)

- A. tunneling
- B. anycasting
- C. translation
- D. encoding
- E. dual-stacking

Answer: B

QUESTION NO: 4

What does TCP use to set up a connection?

- A. Two-way handshake
- B. Sliding window
- C. Three-way handshake
- D. Four-way handshake

Answer: C

QUESTION NO: 5

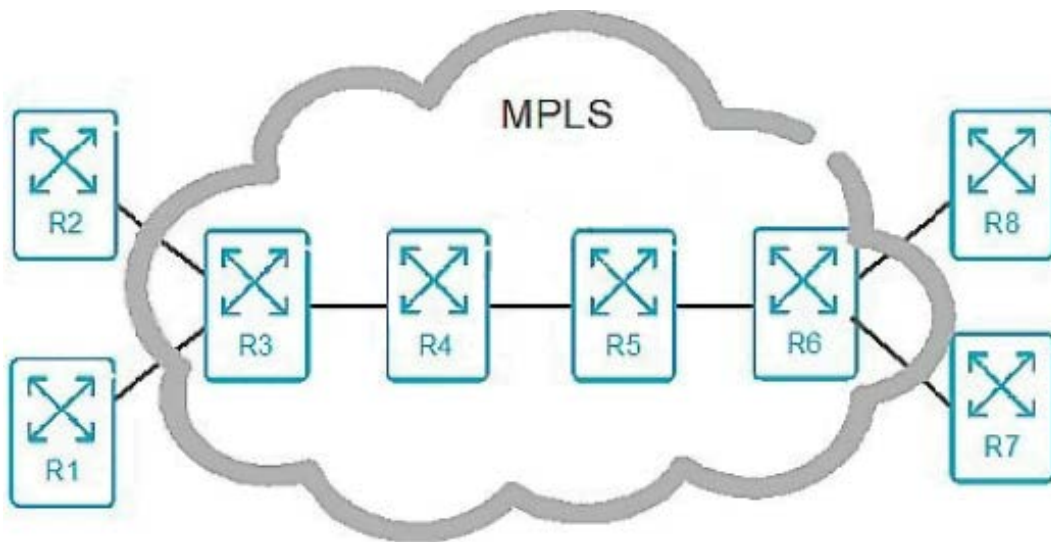
Which two statements are correct regarding QoS in an IP network using DiffServ? (Choose two.)

- A. High priority traffic can be dropped by any router in the network.
- B. Packets belonging to the same QoS class always traverse the same path regardless of IGP topology change.
- C. Routers reserve required bandwidth before they start forwarding packets for a given class.
- D. QoS procedures applied to a given traffic class are the same for all routers within the DiffServ domain.

Answer: A,D

QUESTION NO: 6

Click the Exhibit button.



In the exhibit, which action is performed by router R4?

- A. pop
- B. swap
- C. PHP
- D. push

Answer: B

QUESTION NO: 7

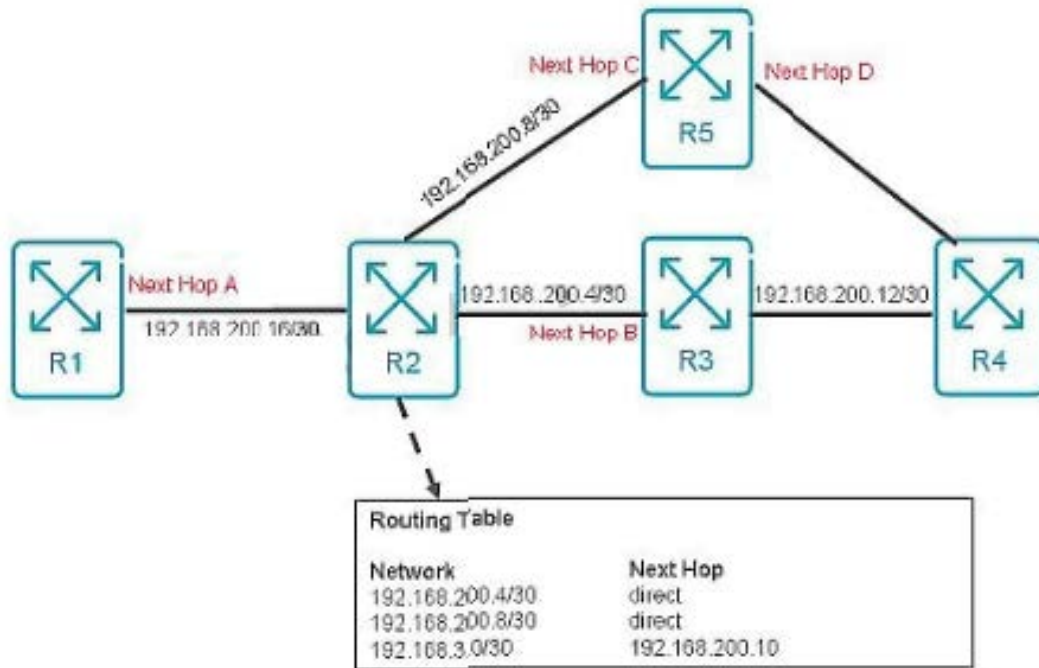
Computer A with IP address 192.168.1.1/24 wants to send a packet to computer B with IP address 192.168.2.1/24. Which statement is correct?

- A. Computer A will send an ARP request to computer B.
- B. Computer A will encode the destination MAC address of computer B.
- C. Computer A will use its default gateway.
- D. Computer A will send a network discovery request to computer B.

Answer: C

QUESTION NO: 8

Click the Exhibit button.



Referring to the exhibit, what is the next hop (A, B, C, or D) for traffic arriving at R2 and destination network 192.168.3.0?

- A. Next Hop A
- B. Next Hop B
- C. Next Hop C
- D. Next Hop D

Answer: C

QUESTION NO: 9

Why must the distance between two IP networks be less than 16 routers when using RIP as a routing protocol?

- A. RIP is a classful routing protocol.
- B. RIP converges too slowly.
- C. RIP uses a metric of 16 as infinite.
- D. RIP uses 16 seconds as a hold timer.

Answer: C

QUESTION NO: 10

IPv6 addresses can be classified into which three categories? (Choose three.)

- A. anycast
- B. broadcast
- C. multicast
- D. hexcast
- E. unicast

Answer: A,C,E

QUESTION NO: 11

What are two advantages of using NAT in a network? (Choose two.)

- A. to provide encryption for all IP traffic
- B. to efficiently compress the IP packet
- C. to hide private IP addresses from the Internet
- D. to reduce the use of public IP addresses in a network

Answer: C,D

QUESTION NO: 12

Which two statements are true about MPLS encapsulation in relation to other protocols? (Choose two.)

- A. MPLS encapsulates IP packets.
- B. UDP encapsulates MPLS packets.
- C. TCP encapsulates MPLS packets.
- D. Ethernet encapsulates MPLS packets.

Answer: A,D

QUESTION NO: 13

What is a characteristic of distance vector protocols?

- A. Distance vector protocols send the entire routing table to directly connected neighbors.
- B. Distance vector protocols send a partial routing table to directly connected neighbors.
- C. Distance vector protocols send a partial routing table to indirectly connected neighbors.
- D. Distance vector protocols send the entire routing table to indirectly connected neighbors.

Answer: A

QUESTION NO: 14

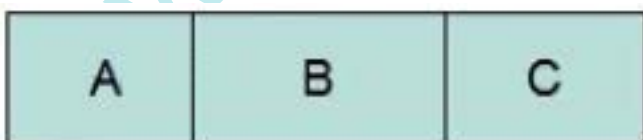
Which two statements are true about Ethernet VLANs? (Choose two.)

- A. VLANs divide an Ethernet network to multiple broadcast domains.
- B. VLANs can exist only within one Ethernet switch.
- C. VLANs can be spread across many Ethernet switches.
- D. VLANs must use different IP addresses.

Answer: A,C

QUESTION NO: 15

Click the Exhibit button.



Referring to the exhibit, which device can fragment IPv6 packets?

- A. Source host
- B. Destination host

- C. Router
- D. Firewall

Answer: A

QUESTION NO: 16

Which statement is true about administrative distance?

- A. The administrative distance for all OSPF routes is the same.
- B. The administrative distance is measured by the routing protocol.
- C. The administrative distance depends on the hop count.
- D. The administrative distance for static routes depends on the next hop.

Answer: A

QUESTION NO: 17

Which two statements are correct regarding distance vector routing protocols? (Choose two.)

- A. Periodically sends the full routing table to its neighbors.
- B. Maintains a network topology view.
- C. Uses hop count as a metric
- D. Uses cost as a metric.

Answer: A,C

QUESTION NO: 18

Which two statements are true about OSPF? (Choose two.)

- A. OSPF routers exchange routes between autonomous systems.
- B. OSPF routers cannot exchange routes between autonomous systems.
- C. OSPF areas are optional.
- D. OSPF areas must contain only one IP prefix.

Answer: B,C

QUESTION NO: 19

What is the proper sequence of actions applied to a packet entering a DiffServ domain?

- A. Classification, marking, queuing, scheduling
- B. Classification, queuing, marking, scheduling
- C. Classification, scheduling, marking, queuing
- D. Classification, queuing, scheduling, marking

Answer: A

QUESTION NO: 20

What sets the DSCP value in a packet?

- A. classification
- B. marking
- C. shaping
- D. policing

Answer: B

QUESTION NO: 21

What is an LER?

- A. A P router
- B. A PE router
- C. A CE router
- D. A DE router

Answer: B

QUESTION NO: 22

Which encapsulation would you enable on a link between two Ethernet switches to ensure proper VLAN handling?

- A. PPP
- B. IEEE 802.1q
- C. Frame-relay
- D. SAToP

Answer: B

QUESTION NO: 23

Before sending any MPLS traffic, what must happen in a network using LDP?

- A. Label signaling
- B. MAC signaling
- C. Fast rerouting
- D. Tag swapping

Answer: A

QUESTION NO: 24

What are two benefits of using Layer 2 bridges in a network? (Choose two.)

- A. Bridges reduce the number of collisions.
- B. Bridges allow multiple devices to transmit at the same time.
- C. Bridges increase the total number of possible VLANs in the network.
- D. Bridges increase the total number of possible MAC addresses in the network.

Answer: A,B

QUESTION NO: 25

You are reviewing the routing table of a router. The same network is advertised by RIP and OSPF.

Why is it preferred to use the next hop provided by OSPF?

- A. OSPF has a faster convergence time.
- B. RIP has a lower metric value.
- C. OSPF is using TCP.
- D. OSPF has a lower administrative distance.

Answer: D

QUESTION NO: 26

What is the expected behavior of an Ethernet switch when it receives an Ethernet frame with an unknown destination MAC address?

- A. The switch should discard the frame.
- B. The switch should send an ARP update request for the missing MAC address.
- C. The switch should send a FIB update request for the missing MAC address.
- D. The switch should forward the frame to all remaining ports.

Answer: D

QUESTION NO: 27

Which protocol assigns IPv6 link local interface addresses?

- A. ICMPv6
- B. DHCPv6
- C. DNS
- D. ND

Answer: D

QUESTION NO: 28

You are operating a network of 50 routers with 1000 routes. You want the routers to trigger routing updates when the network changes.

Which routing protocol will you use?

- A. RIP
- B. eBGP
- C. OSPF
- D. Static

Answer: C

QUESTION NO: 29

You receive a call from your manager about a network problem. Your manager cannot reach remote servers. You need to confirm the link status between the office and the service provider.

Which protocol would you use to identify the problem?

- A. ICMP
- B. DNS
- C. DHCP
- D. SMTP

Answer: A

QUESTION NO: 30

Which two statements about Layer 2 switches are true? (Choose two.)

- A. They process the destination IP addresses of frames they receive.
- B. They process the source MAC addresses of frames they receive.

- C. They process the destination MAC addresses of frames they receive.
- D. They make forwarding decisions based on the source MAC addresses.

Answer: B,C

QUESTION NO: 31

Which three statements describe the purpose for using DHCP? (Choose three.)

- A. It obtains the IP address of a default gateway.
- B. It obtains the MAC address of an Ethernet switch.
- C. It obtains the subnet mask used for an IP address.
- D. It obtains the IP address of a DNS server.
- E. It obtains the IP address of an Ethernet switch.

Answer: A,C,E

QUESTION NO: 32

Which two statements are true about MPLS-TP? (Choose two.)

- A. MPLS-TP is a new standard developed to replace the existing MPLS standard.
- B. MPLS-TP significantly extends MPLS OAM capabilities.
- C. MPLS-TP is a newer version of T-MPLS.
- D. MPLS-TP supports both dynamic and static LSP provisioning.

Answer: B,D

QUESTION NO: 33

What are two purposes for encoding multicast IP addresses into a special MAC address? (Choose two.)

- A. To allow multicast aware switches to optimize bandwidth
- B. To allow multiple hosts to receive the same Ethernet frame

- C. To allow multicast aware switches to transcode multicast into unicast
- D. To allow multicast aware switches to transcode multicast into anycast

Answer: A,B

QUESTION NO: 34

A packet has arrived at the ingress LER.

Which action is performed?

- A. Pop
- B. Push
- C. LSP
- D. Swap

Answer: B

QUESTION NO: 35

Which three ranges are used as private IP addresses? (Choose three.)

- A. 10.0.0.0 to 10.255.255.255
- B. 10.0.0.0 to 11.255.255.254
- C. 172.16.0.0 to 172.31.255.255
- D. 172.16.0.0 to 172.32.0.0
- E. 192.168.0.0 to 192.168.255.255

Answer: A,C,E

QUESTION NO: 36

Which Ethernet port mode simultaneously supports bidirectional transmission?

- A. Simplex mode

- B. Full-duplex
- C. Half-duplex
- D. Coaxial

Answer: B

QUESTION NO: 37

What is the decimal representation of the subnet mask/26?

- A. 255.255.255.128
- B. 255.255.255.192
- C. 255.255.255.240
- D. 255.255.255.255

Answer: A

QUESTION NO: 38

As a network support engineer, you are having difficulty accessing for your mobile switching node using the Web browser GUI. You are told that the node requires a remote restart.

Which protocol would you use as an alternative to access the node to perform this action?

- A. FTP
- B. Secure FTP
- C. RADIUS
- D. Telnet

Answer: D

QUESTION NO: 39

You need to manage a network using IP address 192.168.1.0 with subnet mask 255.255.255.0.

What is the maximum number of IP addresses in this network?

- A. 128
- B. 253
- C. 254
- D. 256

Answer: D

QUESTION NO: 40

What happens with packets on a port configured for WFQ when traffic exceeds port capacity?

- A. Packets are dropped.
- B. Packets are stored in memory.
- C. Packets are sent over an alternate link.
- D. Packets are remarked.

Answer: B

QUESTION NO: 41

What is a collection of connected IP routing prefixes, under the control of one operator, that presents a common, clearly defined, routing policy to the Internet?

- A. Broadcast domain
- B. Autonomous System
- C. OSPF area 0
- D. IS-IS level 1

Answer: B

QUESTION NO: 42

Which routing protocol uses the SPF algorithm?

- A. BGP
- B. RIPv1
- C. IS-IS
- D. RIPv2

Answer: C

QUESTION NO: 43

Which protocol is used to test the reachability of a host in another IP network?

- A. ICMP
- B. ARP
- C. DHCP
- D. DNS

Answer: A

QUESTION NO: 44

You have been asked to sell a VoIP solution to a customer. They have requested more information from you regarding traffic requirements.

Which statement is correct?

- A. MPLS is mandatory for all VoIP calls.
- B. VoIP protocol guarantees 100 percent packet delivery.
- C. IPSec is mandatory for all VoIP calls.
- D. UDP is used to carry the VoIP traffic.

Answer: D

QUESTION NO: 45

Which MPLS router is at the boundary in a MPLS network?

- A. LSR
- B. LER
- C. CE
- D. ABR

Answer: B

QUESTION NO: 46

What is the purpose of port numbers at the TCP/IP transport layer?

- A. To identify the incoming and outgoing Ethernet ports used to carry data
- B. To identify which IP protocol version is being used to carry data
- C. To identify the incoming and outgoing ATM ports used to carry data
- D. To identify the application layer protocol used to handle the data

Answer: D

QUESTION NO: 47

Which two statements are true about Link Aggregation Control Protocol? (Choose two.)

- A. All links must operate at the same speed.
- B. Links can operate at different speeds.
- C. All links must operate in full duplex mode.
- D. 802.1q encapsulation cannot be enabled on all links.

Answer: A,C

To Read the [Whole Q&As](#), please purchase the [Complete Version](#) from [Our website](#).

Trying our product !

- ★ **100%** Guaranteed Success
- ★ **100%** Money Back Guarantee
- ★ **365 Days** Free Update
- ★ **Instant Download** After Purchase
- ★ **24x7** Customer Support
- ★ Average **99.9%** Success Rate
- ★ More than **69,000** Satisfied Customers Worldwide
- ★ Multi-Platform capabilities - **Windows, Mac, Android, iPhone, iPod, iPad, Kindle**

Need Help

Please provide as much detail as possible so we can best assist you.

To update a previously submitted ticket:

A green button with a white border and a torn paper effect on the left side, containing the text "Submit A Ticket".

Submit A Ticket

One Year Free Update



Free update is available within One Year after your purchase. After One Year, you will get 50% discounts for updating. And we are proud to boast a 24/7 efficient Customer Support system via Email.

100%

Money Back Guarantee

To ensure that you are spending on quality products, we provide 100% money back guarantee for 30 days from the date of purchase.



Security & Privacy

We respect customer privacy. We use McAfee's security service to provide you with utmost security for your personal information & peace of mind.

Guarantee & Policy | Privacy & Policy | Terms & Conditions

Any charges made through this site will appear as Global Simulators Limited.

All trademarks are the property of their respective owners.

Copyright © 2004-2015, All Rights Reserved.

Get Latest & Actual IT Exam Dumps with VCE and PDF from [Pass4itSure](#).

<https://www.Pass4itSure.com>