



# EADA105<sup>Q&As</sup>

ArcGIS Desktop Associate 10.5

## Pass Esri EADA105 Exam with 100% Guarantee

Free Download Real Questions & Answers **PDF** and **VCE** file from:

<https://www.pass4itsure.com/eada105.html>

100% Passing Guarantee  
100% Money Back Assurance

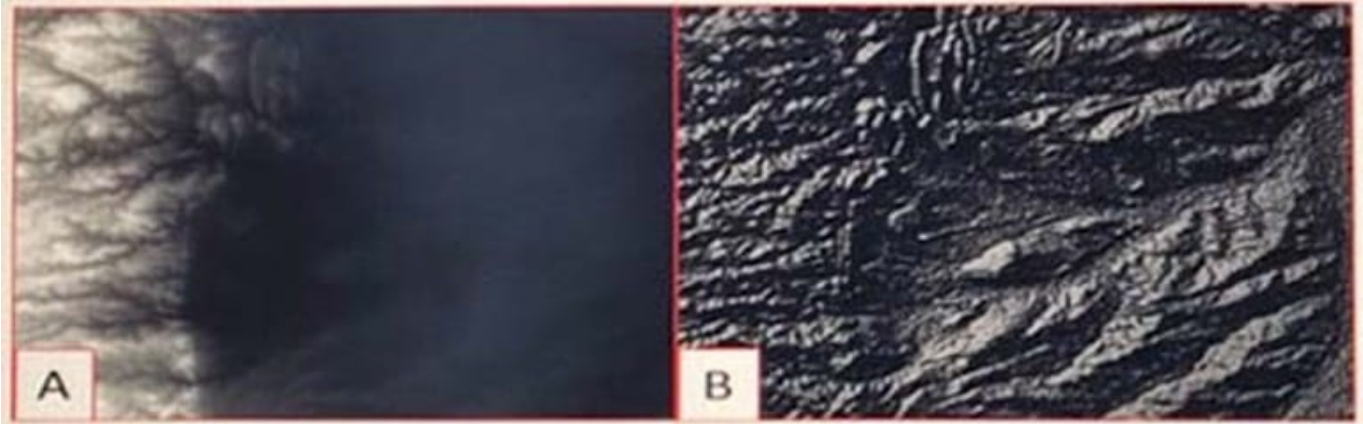
Following Questions and Answers are all new published by Esri Official Exam Center

-  **Instant Download** After Purchase
-  **100% Money Back** Guarantee
-  **365 Days** Free Update
-  **800,000+** Satisfied Customers



**QUESTION 1**

Refer to the exhibit.



Which raster function will display image A as image B?

- A. Shaded Relief
- B. Slope
- C. Hillshade
- D. Aspect

Correct Answer: D

Reference: <http://desktop.arcgis.com/en/arcmap/10.3/manage-data/raster-and-images/aspect-function.htm>

---

**QUESTION 2**

A GIS analyst regularly sends data to contractors. The datasets are stored in an enterprise geodatabase. The GIS analyst will prepare either a file geodatabase or shapefile depending on the contractor. Only a certain subset of the dataset should be sent, and this process will be scripted.

Which tool should the GIS analyst use to meet all requirements?

- A. Copy
- B. Append
- C. Feature Class To Feature Class
- D. Table To Table

Correct Answer: C

---

**QUESTION 3**

An ArcGIS user with a parcel layer and a stand-alone table of assessor's data is creating a tax map that will display data from both attribute tables. Both the parcel layer and the stand-alone table have one record per parcel.

Which operation should the ArcGIS user perform to prepare the data for display?

- A. Relate
- B. Join
- C. Spatial join
- D. Append

Correct Answer: B

Reference: <https://pro.arcgis.com/en/pro-app/help/data/tables/joins-and-relates.htm>

---

**QUESTION 4**

An ArcGIS Pro user must be able to share work with a user in another organization to complete an analysis. The following items must be shared:

1.  
Maps and the data referenced by their layers
2.  
Toolboxes
3.  
Geoprocessing history
4.  
Attachments

Which package type meets the criteria?

- A. Map
- B. Layer
- C. Project
- D. Scene

Correct Answer: C

Reference: <https://pro.arcgis.com/en/pro-app/help/sharing/overview/project-package.htm>

---



### QUESTION 5

When performing analysis in ArcGIS Online, which tool allows the GIS analyst to select features in the study area that meet a series of criteria based on spatial or attribute queries?

- A. Derive New Locations
- B. Find Similar Locations
- C. Find Existing Locations
- D. Create Viewshed

Correct Answer: C

Reference: <https://doc.arcgis.com/en/arcgis-online/analyze/find-existing-locations.htm>

### QUESTION 6

Refer to the exhibit.

OBJECTID	SHAPE	WaterType	Diameter	SHAPE_Length
1	Polyline	MAIN	6	251.549848
2	Polyline	MAIN	10	271.552772
3	Polyline	MAIN	8	281.347527
4	Polyline	MAIN	12	240.840217
5	Polyline	MAIN	8	949.607268
6	Polyline	MAIN	4	532.267845
7	Polyline	SRV	8	53.877048
8	Polyline	SRV	10	61.644244
9	Polyline	SRV	8	58.523687
10	Polyline	SRV	4	45.296907
11	Polyline	SRV	4	58.985137
12	Polyline	SRV	10	43.887858
13	Polyline	SRV	10	58.017878



An engineering supervisor at a water utility asks the GIS analyst to find all pipes that are less than 10 inches in diameter. The analyst prepares a Select By Attribute query on the geodatabase feature class:

Diameter

When validating this SQL query, the analyst gets the error: "There was an error with the expression."

What is invalid about the query?

- A. Field name must be enclosed in brackets: [Diameter]
- B. Field name must be enclosed in single quotes: \'Diameter\'
- C. Diameter is a text field but is using a numeric comparison
- D. Query should include Diameter > 0 and

Correct Answer: D

---

#### QUESTION 7

How should an ArcGIS Pro analyst configure a feature layer and stand-alone table in the Contents pane to support publishing a feature service that keeps an association between them?

- A. Create a relationship class between the features and the table
- B. Create an in-memory relate in the Contents pane
- C. Copy the data to a file geodatabase, compress to zipfile, and publish as an item
- D. Create a temporary join in the Contents pane

Correct Answer: A

Reference: <https://community.esri.com/thread/198458-publish-hosted-feature-service-with-related-tableswont-work-with-arcgis-pro-20>

---

#### QUESTION 8

An ArcGIS user receives a file that contains global positioning system track information. The user must import that data to create polyline track features.

Which workflow will complete this task?

- A. Table To Geodatabase > XY To Line
- B. Points To Line > Dice
- C. GPX To Features > Points To Line
- D. Quick Import > Set Flow Direction



Correct Answer: C

Reference: <https://pro.arcgis.com/en/pro-app/tool-reference/conversion/gpx-to-features.htm>

---

### QUESTION 9

What is the proper workflow to export only the attribute table of a feature class to a file geodatabase?

- A. Right-click the layer in the Contents pane > Data > Export Data
- B. Right-click the layer in the Contents pane > Data > Export Table
- C. Open the Table To Excel Tool > Use the feature class as the input > Run the tool
- D. Right-click the target geodatabase > Import > Feature class (single)

Correct Answer: A

Reference: <https://desktop.arcgis.com/en/arcmap/latest/manage-data/geodatabases/exporting-featuredatasets-classes-and-tables-to-a.htm>

---

### QUESTION 10

An ArcGIS Pro user creates a new map and adds in a new data layer.

What happens by default to the coordinate system of the map?

- A. The layer is re-projected to match the basemap layer.
- B. The layer is projected on the fly to match the basemap layer.
- C. The map takes on the projection of the layer that was added.
- D. The map stays in the projection of the basemap layer.

Correct Answer: B

Reference: <http://desktop.arcgis.com/en/arcmap/10.3/map/working-with-arcmap/specifying-a-coordinatesystem.htm>

---

### QUESTION 11

A GIS analyst using ArcGIS Pro needs to georeference several non-georeferenced aerial photos. All aerial photos have a similar spectral signature, the same geographic location, time and season, image orientation, image scale, and band combination. The analyst has a single georeferenced raster in a known coordinate system for the same location, which has the same image properties. The analyst adds the single georeferenced raster to a new map with an imagery basemap layer and then applies the following workflow:

Imagery tab > Georeference > Prepare group > Fit To Display > Adjustment group

Which next step allows the analyst to georeference the remaining non-georeferenced aerial photos?



- A. Auto Georeference
- B. Add Control Points
- C. Import Control Points
- D. Transform

Correct Answer: A

Reference: <https://pro.arcgis.com/en/pro-app/help/data/imagery/georeferencing-a-raster-automatically-toanother-raster.htm>

---

### QUESTION 12

An analyst is part of a team that manages facility assets at a company with many operational sites with fixed and movable assets. Assets must be instantly located on a map in ArcGIS Pro, and are modeled as an editable feature service named ASSETS in the organization portal. Assets have a unique identifier attribute ID matching the company asset register.

How can an analyst instantly locate an asset on a map?

- A. Create Address Locator > Project pane > Add To Project > Locate pane > Disable Esri World Geocoder
- B. Create Attribute Index UNIQUE on ID > Analysis Gallery > Customize > Add Select Layer By Attributes
- C. Locate pane > Settings > Add A Locate Provider > Add Layer ASSETS > Search Model Equals ID
- D. Create a Python script tool that uses the feature service query endpoint to return a feature into the map

Correct Answer: D

---

### QUESTION 13

An ArcMap user is displaying layers in ArcMap from several different geographic coordinate systems. Some data is shifted from where it should be. Several geographic coordinate system transformations are listed in the Geographic Coordinate Systems Transformations dialog box.

Which of the following workloads will allow the correct geographic transformation to be applied to resolve the data shift?

- A. Open the Layer Properties dialog box for each layer using the transformation > Change the transformation for the layer
- B. Select Transformations from the main menu in ArcMap > Change the transformation for the map document
- C. Open the Data Frame Properties dialog box > Change the transformation for the data frame
- D. For each data source using the transformation, change the transformation in the Catalog tree > Reload the corresponding layers

Correct Answer: C

Reference: <https://doc.arcgis.com/en/arcgis-online/reference/faq.htm#anchor71>

---



#### QUESTION 14

A GIS technician must place points representing light poles 5 feet from the digitized edge of a road.

Which editing tool should the editor use?

- A. Align To Shape
- B. 2 Point Line
- C. Point At End Of Line
- D. Construct Points

Correct Answer: C

Reference: [http://webhelp.esri.com/arcgisdesktop/9.2/index.cfm? TopicName=Common\\_point\\_editing\\_tasks](http://webhelp.esri.com/arcgisdesktop/9.2/index.cfm? TopicName=Common_point_editing_tasks)

---

#### QUESTION 15

An ArcGIS user has built a mosaic dataset using 25 rasters. However, upon adding the mosaic dataset to a blank map, the user finds that all rasters are NOT displaying. To troubleshoot the issue, the user zooms to the source resolution of one of the tiles and notices that the raster displays at 1:107000 but NOT at 1:997000.

Which tool needs to run to allow display of the rasters from 1:107000 to 1:997000?

- A. Build Pyramids
- B. Build Overviews
- C. Build Footprints D. Build Boundary

Correct Answer: A

[EADA105 Study Guide](#)

[EADA105 Exam Questions](#)

[EADA105 Braindumps](#)