

**Exam** : **E20-822**

**Title** : CLARiiON Solutions Expert  
Exam for Storage  
Administrators

**Version** : Demo

www.Pass4itSure.com

1. A customer was running a snapshot session when they noticed a SP failure. The Source LUN was owned by the failed SP. What will happen to the session and the Reserved LUN Pool (RLP) LUN?

A.Session continues and the RLP LUNs trespass. After repairing the failed SP, the RLP LUN must be manually trespassed to the original owning SP.

B.Session continues and the RLP LUNs trespass. After repairing the failed SP, the RLP LUN trespasses back to the original owning SP.

C.Session gets deactivated and the SP frees the allocated LUN. After fixing the failed SP, the session will activate and the original RLP LUN will be allocated.

D.Session stops and a new RLP LUN will be allocated on the surviving SP upon fixing the failed SP. The RLP LUN will trespass back to the original SP and the user must manually restart the session.

Answer: B

2. A customer has recently upgraded their CLARiiON to FLARE R26. What software and configuration changes must the storage administrator ensure are in place to take advantage of the Asymmetric Active/Active features of the software?

A.PowerPath 5.0; and change all initiators to use Failover mode 2

B.PowerPath 5.0; disable ArrayCommPath, and change all initiators to use Failover mode 4

C.PowerPath 5.1; and change all initiators to use Failover mode 4

D.PowerPath 5.1; disable Array CommPath, and change all host initiators to use Failover mode 3

Answer: C

3. A customer has been tasked with copying 50 LUNs between two CLARiiONs using SAN Copy. The customer starts the sessions selecting all defaults. The resulting copies appear to be taking an unexpectedly long time.

Which settings should be increased to improve performance?

A.Reserved LUN Pool Size, Concurrent sessions

B.Throttle Value, Concurrent sessions

C.Throttle Value, Reserved LUN Pool Size

D.Write cache, Reserved LUN Pool

Answer: B

4. A company has requested an independent consultant to develop and implement a security model for the CLARiiON storage platform. The company has limited access to the administrator role by removing rights for all accounts. However, they would like to keep the single administrator role account for top level management.

Management of user security should not be done by the administrator role user. In addition, the storage object administrators should not be able to change user security when using the Secure CLI. CLARiiON storage systems are located in a protected data center with limited physical access.

Which method should be employed to manage user security?

A. Create a Security Administrator role user and create a Manager role user account for storage object managers.

B. Create a Security Administrator role user, enable the CLI filter, and create a Manager role user account for storage object managers.

C. Implement security using PKI certificates, create a Security Administrator role user, and enable the CLI filter.

D. Implement security using PKI certificates, enable the CLI filter, and create a Manager role user account for storage object managers.

Answer: B

5. Click the Exhibit button.

A customer uses multiple server preparation scripts; one for new Exchange servers and one for recovery. These scripts are used to configure the CLARiiON storage using the Navisphere Secure CLI. The customer calls and reports that they accidentally ran the new server preparation script instead of the recovery script they intended to run.

The customer asks for a check to see if their data is still available from CLARiiON storage as they cannot find their LUNs. The CLARiiON SP event logs show the data in the exhibit. Which method can the customer use to correct the problem?

A. Rebind base and component LUNs, reform the metaLUN, place the metaLUN in SG for the host, and recover the data from the backup.

B.Reform the metaLUN from the original base and component LUNs, place the metaLUN in SG for the host, and recover the data from the backup.

C.Use CLARiiON recovery tools to recover the metaLUN, place the metaLUN in SG for the host, and recover the data from the backup.

D.Use Navisphere Secure CLI tools to recover base and component LUNs, reform the metaLUN, and place the metaLUN in SG for the host.

Answer: A

6. Click the Exhibit button.

A storage administrator is automating a solution using the Navisphere Secure CLI. In the event of production data corruption, the script needs to recover from the target LUNs.

Which steps should the script perform?

P = Primary

S = Secondary

Snap = Snapshot

A.Unmount P, fracture, roll back Snap, synchronize, promote P, and mount P

B.Unmount P, promote S, fracture, roll back Snap, synchronize, promote P, and mount P

C.Unmount P, roll back Snap, promote S, fracture, synchronize, promote P, and mount P

D.Unmount P, roll back Snap, restore S, and mount P

Answer: B

7. A customer has configured SnapView for two LUNs on a DR CLARiiON storage system. When the client attempts to run the Navisphere Secure CLI command to create the snapshot session, it fails.

In the setup process for using SnapView, which step did the customer forget to do?

A.Allocate LUNs to the Reserved LUN Pool

B.Allocate Write Intent Log

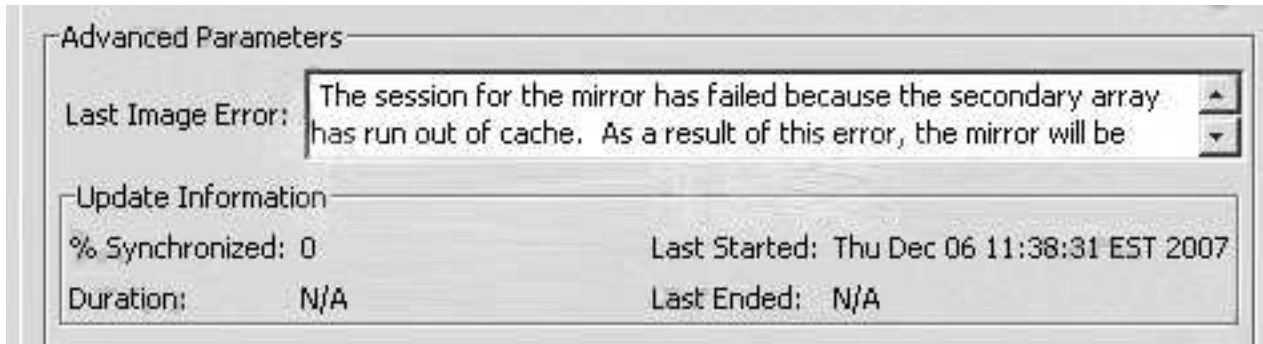
C.Enable Incremental Synchronization

D.Test IP link latency

Answer: A

8. Click the Exhibit button.

A failure has occurred in a DR environment. The error message is displayed in the exhibit. What must be done to correct the failure?



- A. Add more LUNs to the remote CLARiiON RLP. Restart the synchronization.
- B. Destroy the mirror. Add a secondary of the correct size.
- C. Enable write cache on the remote CLARiiON Write Intent Logs. Restart the synchronization.
- D. Increase the write cache size on the remote CLARiiON.

Answer: A

9. A customer is reporting a problem with a physical disk. Examining the SP Event Log shows errors for LUN 16. Data is being gathered from a UNIX host used for storage management. The host does not have the capability to run the Navisphere Web UI.

To determine the underlying disk structure, which Navisphere Secure CLI subcommand can be used to determine if LUN 16 is being affected?

- A. getdisk
- B. getinfo
- C. getlun
- D. getrg

Answer: C

10. Click the Exhibit button.

Based on the exhibit, what happened between 05:21 A.M. and 06:56 A.M.?

```

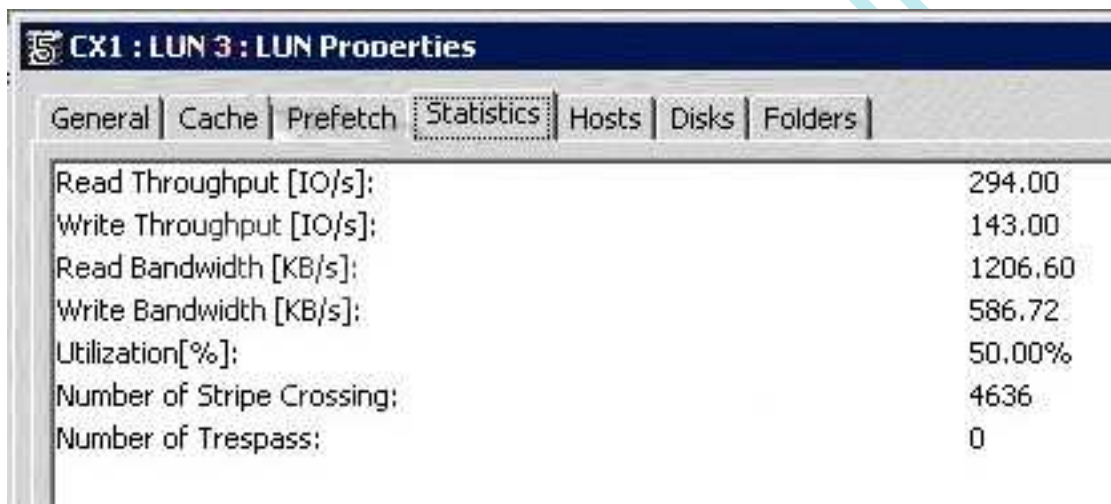
06:56:31 AM 0x71310008 CMID Transport Device 2: Gate 0 connects to SP ID 0x6fb320b060010650:0 (Signature 0x12b8bb)
06:56:31 AM 0x71310008 CMID Transport Device 2: Gate 0 connects to SP ID 0x6fb320b060010650:0 (Signature 0x12b8bb)
06:56:31 AM 0x71310007 CMID Transport Device 2: 1 gate(s) found. 00 00 04 00 03 00 4e 00 d3 04 00 00 07 00 31 61 07 0f
05:21:10 AM 0x71050401 K10 50060160b020b36f became unreachable. 00 00 04 00 02 00 64 00 d3 04 00 00 01 04 05 61 0f
05:21:10 AM 0x71100001 Lost contact with 6fb320b060010650:0 on conduit 7. 00 00 04 00 04 00 4c 00 d3 04 00 00 01 00 1
05:21:10 AM 0x71100001 Lost contact with 6fb320b060010650:0 on conduit 8. 00 00 04 00 04 00 4c 00 d3 04 00 00 01 00 1
    
```

- A. CLARiiON back-end port was disconnected
- B. CLARiiON front-end port was disconnected
- C. MirrorView connection failed
- D. SAN Copy connection failed

Answer: C

11. Click the Exhibit button.

What is true of LUN 3?



- A. Disk crossings are excessively high
- B. Disk utilization is above the best practices threshold
- C. The host data is misaligned
- D. The number of stripe crossings indicates a large I/O size

Answer: C

12. A large financial customer has a time-critical OLTP application running on a dedicated CX3-80. One of their internal administrators believes they modified something that could have affected the production LUN. Since then the response time has increased significantly.

What action is the likely cause of the problem?

- A. Decreased the high watermark to 75%
- B. Enabled auto-assignment
- C. Increased queue depth to 128
- D. Increased the cache write aside value to 3076

Answer: C

13. A customer has a single RAID group with a RAID 1/0 6+6 LUN on a dedicated DAE2. This LUN is active on SP A. They need to expand with the maximum possible increase in IOPS. The LUN may not go offline. The customer has a new DAE2 with the same disks.

How should they proceed?

- A. Add 12 disks to the current RAID group. Create a new LUN. Create a striped metaLUN.
- B. Back up the current LUN. Create a new RAID group and a new LUN on SP B. Present it to the host and create a LVM plaid. Restore the data.
- C. Create a new RAID group and create a new LUN on SP A. Create a concatenated metaLUN.
- D. Create a new RAID group and create a new LUN on SP A. Create a striped metaLUN.

Answer: D

14. A large warehousing company has two CLARiiONs with two LUNs set up and each is mirrored with MirrorView/A over DWDM. The two sites are less than 1 km away.

The company is currently running an OLTP database on a 300 GB RAID 1/0 4+4 LUN and its logging on a 150 GB RAID 1/0 4+4 LUN. The I/O read/write ratio is 2:1 with a 2 kB average I/O size.

The customer notices that at peak times the latency becomes an issue as their users start to complain about poor performance. What is your recommendation?

- A. Check the fibre for faults
- B. Upgrade the CLARiiON model
- C. Use Incremental SAN Copy
- D. Use MirrorView/S

Answer: D

15. A customer uses Incremental SAN Copy (ISC) as part of a DR solution. They have configured the

Reserved LUN Pool (RLP). They are adapting their environment to support different failure scenarios.

Which combination of failures is most serious?

A.A failure of the ISC update followed by a failure of the production LUN

B.A failure of the ISC update followed by a failure of the remote LUN

C.A failure of the link followed by a failure of the remote RLP

D.A failure of the RLP on the remote CLARiiON followed by a failure of the remote LUN

Answer: A

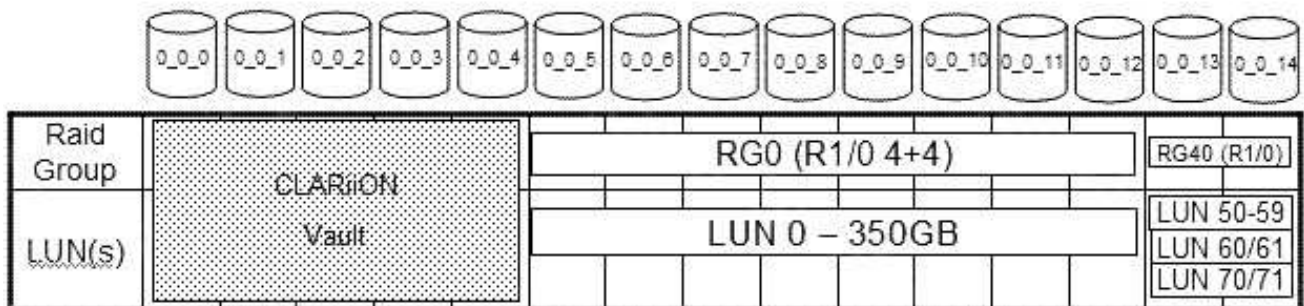
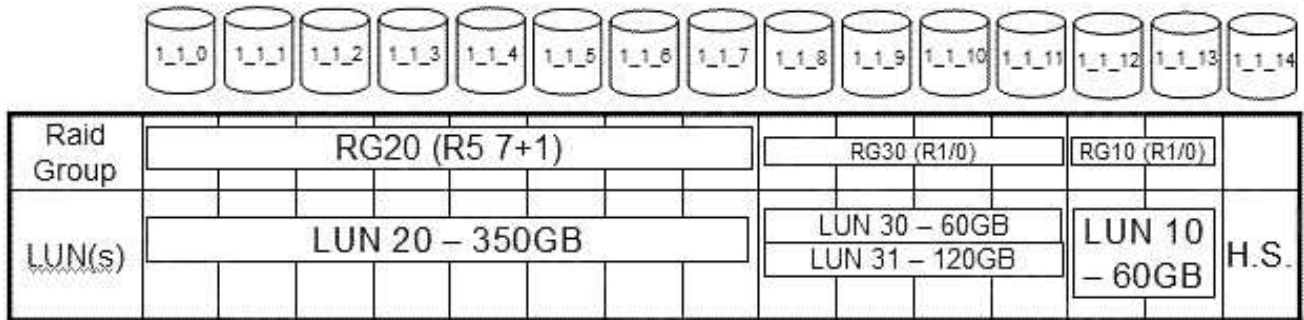
16. Click the Exhibit button.

You are the SAN Administrator at a company. The company is running multiple Exchange Server 2007 storage groups on a CLARiiON array that exclusively uses 15k rpm 146 GB drives. You have been tasked with adding a third Exchange storage group with one mailbox store to the existing server.

The storage for this new Exchange storage group must be allocated from the same CLARiiON currently running the other two Exchange storage groups. All Exchange storage groups are presently exhibiting a 1:1 read/write ratio. The new storage group will require capacity identical to the existing Exchange storage groups.

The table below, as well as the exhibit, indicates the current utilization of the array. In order to satisfy the capacity requirements (GB and IOPS), in which RAID group must you create a database LUN for the new Exchange storage group?





- A.0
- B.10
- C.20
- D.30b

Answer: C

17. You are using Replication Manager to make clones of two production Exchange mailbox database LUNs. After reviewing the event log for the week, you notice there have been numerous failures but no alerts have been sent out. Replication Manager was configured to send email alerts in case of an Exchange job failure.

What is preventing the email alerts from being sent out?

- A.MAPI32.DLL is missing on the Replication Manager server
- B.Outlook was not installed on the Replication Manager server
- C.The Replication Manager console was not configured to relay alerts
- D.The SMTP service in IIS was not configured on the Replication Manager server

Answer: D

18. A customer is implementing the Replication Manager/SAN Copy/RepliStor solution for DR of their

Exchange environment. In the process of configuring this solution they need to configure the RM DR utility to run after the completion of the SAN Copy job.

Which level of IR callout should they use in order for the script to invoke at the proper time?

- A.100
- B.300
- C.400
- D.600

Answer: D

19. A company has implemented Replication Manager to back up their SQL Server. In addition to clone copies every 6 hours, they have also implemented SQL Server log backups for a more granular RPO. Last night, a junior DBA corrupted the production database. After using Replication Manager to restore the database with no recovery, the senior DBA attempts to replay the transaction log backups but the database returns an error indicating that no database is in a state to replay logs.

What is the cause of this restore failure?

- A.Replication Manager only supports transaction log replay on databases restored with full recovery
- B.rmsqlrestore.exe was not used to replay the VDI metadata
- C.The restored database's SCN is out of sync with the SQL system databases
- D.The transaction log backups have a gap in the sequence of transactions

Answer: B

20. A customer is currently using Replication Manager to create clone copies of their SQL Server instance which are then mounted to a backup server and streamed to tape. The customer has decided to purchase a second CLARiON and implement a DR scenario. The DR site is located 30 km away. A dedicated T1 (1.5 Mb) line is leased specifically for DR purposes with measured latencies that average 5-10 ms.

The application is considered mission-critical and as such very little data loss is acceptable. Any solution implemented must have very little impact on performance. Time will be allowed for the application to be recovered in the case of a disaster. The implemented solution must also allow for transaction logs to be replayed in the case of data corruption.

Which DR solution would best fit this scenario?

A.MirrorView/A

B.RepliStor SQL Server Module

C.SQL Log Shipping/Full SAN Copy from the production LUN

D.SQL Log Shipping/Incremental SAN Copy from the production LUN

Answer: C

21. Click the Exhibit button.

While performing a routine check of a CX3-40 with FLARE R26 the storage administrator receives an error while trying to clear the logs. What is the cause of the error?



A.Host agent is not running

B.The Privileged User List is empty

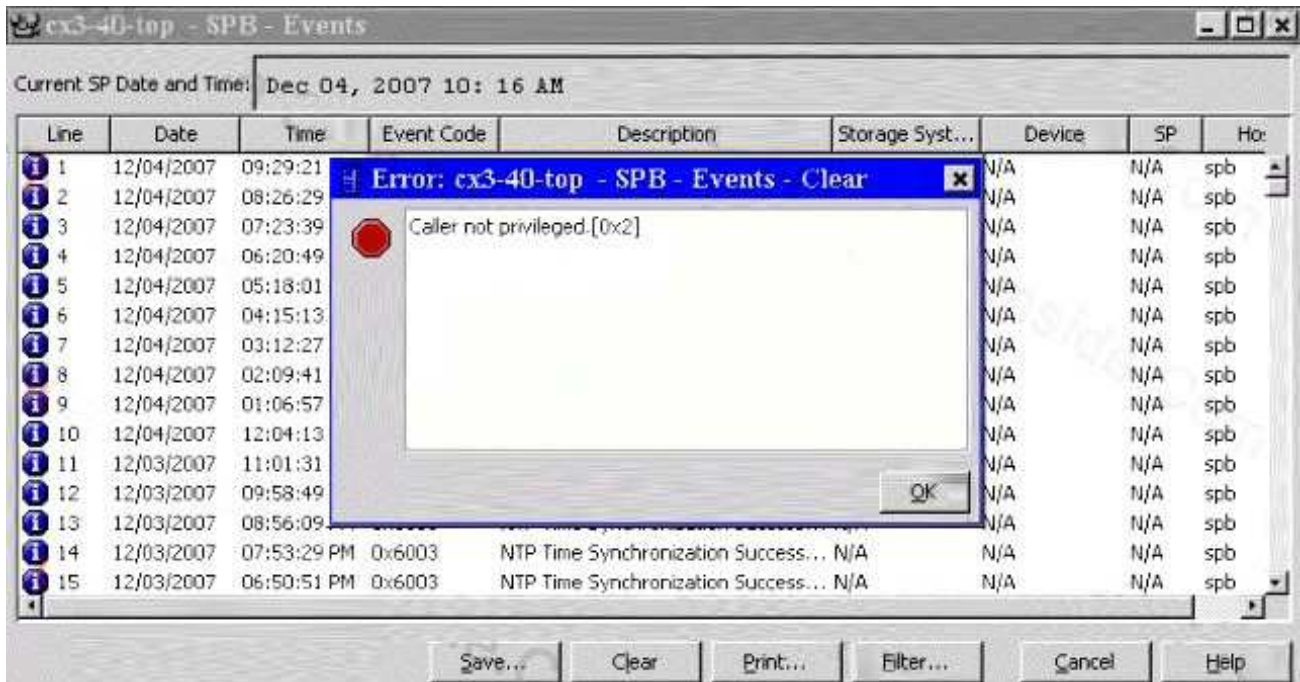
C.The user is logged in as a security administrator role

D.The user is logged in with a manager role

Answer: D

22. Click the Exhibit button.

While performing a routine check of a CX3-40 with FLARE R26 the storage administrator receives an error while trying to clear the logs. What is the cause of the error?

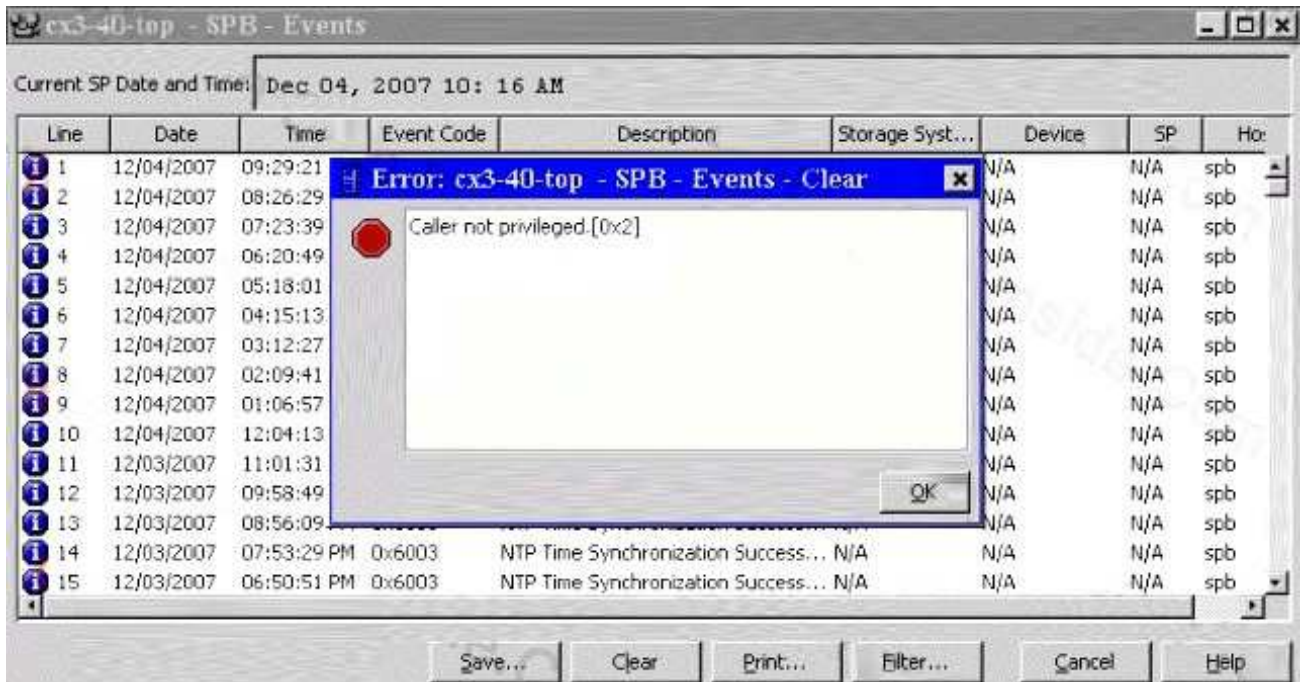


- A. Host agent is not running
- B. The Privileged User List is empty
- C. The user is logged in as a security administrator role
- D. The user is logged in with a manager role

Answer: D

23. Click the Exhibit button.

While performing a routine check of a CX3-40 with FLARE R26 the storage administrator receives an error while trying to clear the logs. What is the cause of the error?



- A. Host agent is not running
- B. The Privileged User List is empty
- C. The user is logged in as a security administrator role
- D. The user is logged in with a manager role

Answer: D

24. Click the Exhibit button.

While performing a routine check of a CX3-40 with FLARE R26 the storage administrator receives an error while trying to clear the logs. What is the cause of the error?



- A.Host agent is not running
- B.The Privileged User List is empty
- C.The user is logged in as a security administrator role
- D.The user is logged in with a manager role

Answer: D

25. A customer created two RAID groups, 0 and 2, with the default settings on their CX3-80 and bound four LUNs in each group. After starting the application the customer notices all I/O is going through SP B. What caused the LUN imbalance?

- A.CX3-80 has a single SP
- B.Default setting bound all LUNs on the same SP
- C.Host does not have failover software installed
- D.Host is not ALUA-aware

Answer: B

26. A customer created two RAID groups, 0 and 2, with the default settings on their CX3-80 and bound four LUNs in each group. After starting the application the customer notices all I/O is going through SP B. What caused the LUN imbalance?

- A.CX3-80 has a single SP
- B.Default setting bound all LUNs on the same SP
- C.Host does not have failover software installed
- D.Host is not ALUA-aware

Answer: B

27. Click the Exhibit button.

A customer wants to create an additional 250 GB LUN on their existing RAID 6 group. How can this be accomplished?

- A.Create the LUN on another RAID 6 group using concatenation
- B.Defragment the RAID group and bind the additional LUN
- C.Destroy the RAID group and create the new LUNs
- D.Expand the RAID group to increase the available space

Answer: A

28. Click the Exhibit button.

A customer wants to create an additional 250 GB LUN on their existing RAID 6 group. How can this be accomplished?

- A.Create the LUN on another RAID 6 group using concatenation
- B.Defragment the RAID group and bind the additional LUN
- C.Destroy the RAID group and create the new LUNs
- D.Expand the RAID group to increase the available space

Answer: A

29. A new CLARiiON arrives at a customer's site and an EMC Customer Engineer performs the physical installation. The storage administrator is under a lot of pressure to have the array online and in production by the end of the week. The storage administrator selects several Windows and Solaris servers for the initial production rollout. The storage requirements have been agreed upon and the storage administrator creates 30 LUNs of various sizes based upon EMC best practices.

The administrator works with the server team to install HBAs, update settings, install EMC software, and

then perform the necessary cabling and zoning requirements. After the hosts successfully register with the CLARiiON array, the Windows and Solaris administrators state each server has 30 LUNs allocated.

What does the storage administrator need to accomplish to ensure each server has access to the appropriate LUNs?

A.Create the appropriate storage groups

B.Disable Access Logix

C.Enable Access Logix

D.Fix the incorrect zones

Answer: C

30. A new CLARiiON arrives at a customer's site and an EMC Customer Engineer performs the physical installation. The storage administrator is under a lot of pressure to have the array online and in production by the end of the week. The storage administrator selects several Windows and Solaris servers for the initial production rollout. The storage requirements have been agreed upon and the storage administrator creates 30 LUNs of various sizes based upon EMC best practices.

The administrator works with the server team to install HBAs, update settings, install EMC software, and then perform the necessary cabling and zoning requirements. After the hosts successfully register with the CLARiiON array, the Windows and Solaris administrators state each server has 30 LUNs allocated.

What does the storage administrator need to accomplish to ensure each server has access to the appropriate LUNs?

A.Create the appropriate storage groups

B.Disable Access Logix

C.Enable Access Logix

D.Fix the incorrect zones

Answer: C



# Trying our product !

- ★ **100%** Guaranteed Success
- ★ **100%** Money Back Guarantee
- ★ **365 Days** Free Update
- ★ **Instant Download** After Purchase
- ★ **24x7** Customer Support
- ★ Average **99.9%** Success Rate
- ★ More than **69,000** Satisfied Customers Worldwide
- ★ Multi-Platform capabilities - **Windows, Mac, Android, iPhone, iPod, iPad, Kindle**

## Need Help

Please provide as much detail as possible so we can best assist you.

To update a previously submitted ticket:



Submit A Ticket

### One Year Free Update



Free update is available within One Year after your purchase. After One Year, you will get 50% discounts for updating. And we are proud to boast a 24/7 efficient Customer Support system via Email.



### Money Back Guarantee

To ensure that you are spending on quality products, we provide 100% money back guarantee for 30 days from the date of purchase.



### Security & Privacy

We respect customer privacy. We use McAfee's security service to provide you with utmost security for your personal information & peace of mind.

## Guarantee & Policy | Privacy & Policy | Terms & Conditions

Any charges made through this site will appear as Global Simulators Limited.

All trademarks are the property of their respective owners.

Copyright © 2004-2014, All Rights Reserved.