



E20-495^{Q&As}

Content Management xCelerated Composition Platform Application
Development Exam

Pass EMC E20-495 Exam with 100% Guarantee

Free Download Real Questions & Answers **PDF** and **VCE** file from:

<https://www.pass4itsure.com/e20-495.html>

100% Passing Guarantee
100% Money Back Assurance

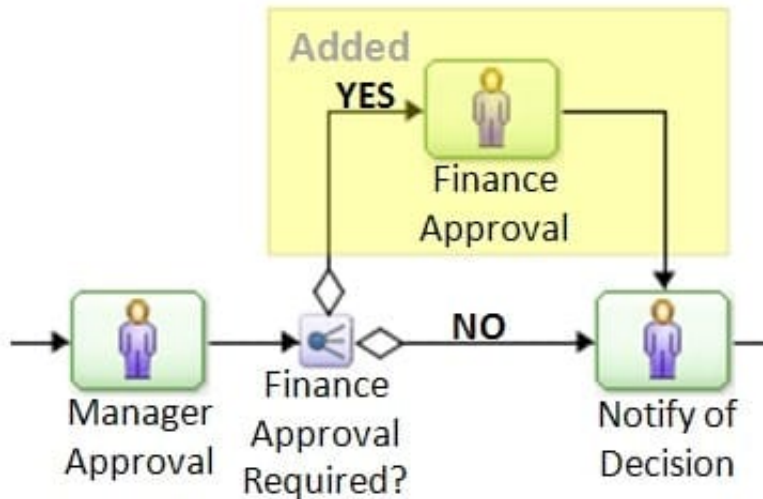
Following Questions and Answers are all new published by EMC
Official Exam Center

-  **Instant Download** After Purchase
-  **100% Money Back** Guarantee
-  **365 Days** Free Update
-  **800,000+** Satisfied Customers



**QUESTION 1**

Refer to the exhibit.



A new activity is added to an existing process, along with a decision split. However, in the new version of the process, the activity Notify of Decision never appears in the user's inbox regardless of whether finance approval is required. No other changes were made to the process. What is the most likely cause of the issue?

- A. The transition definition was set incorrectly on the Finance Approval activity.
- B. The triggers were set incorrectly on the Notify of Decision activity.
- C. The triggers were set incorrectly on the Finance Approval activity.
- D. The transition definition was set incorrectly on the Finance Approval Required? activity.

Correct Answer: B

QUESTION 2

Once a process dashboard has been configured, what must be done to expose it in the TaskSpace interface?

- A. Associate it with a configurable action.
- B. Associate it with a form template.
- C. Associate it with a process template.
- D. Associate it with an application tab.

Correct Answer: D



QUESTION 3

What is part of the xCP runtime architecture?

- A. Process Integrator
- B. Process Reporting Services
- C. Process Builder
- D. TaskSpace Configuration

Correct Answer: A

QUESTION 4

Which role is required for a user to browse a queue and acquire eligible workitems regardless of their priority?

- A. queue_advance_processor
- B. queue_admin
- C. queue_manager
- D. queue_processor

Correct Answer: A

QUESTION 5

When configuring an Import Dialog Box in TaskSpace, what type of Forms Builder template can the developer use when creating the metadata template?

- A. electronic form, document view, and folder information
- B. electronic form only
- C. electronic form or document view
- D. document view only

Correct Answer: C

QUESTION 6

According to EMC best practices, what can improve the performance of task list sorting and filtering when there are a large number of active workflows?

- A. Create a database index on the field `dmi_queue_item_s.date_sent`.
- B. Modify the task list form template to sort on `dmi_queue_item.date_sent`.



- C. Modify the task list form template to sort on dmi_workitem.r_creation_date.
- D. Create a database index on the field dmi_workitem_s.r_creation_date.

Correct Answer: C

QUESTION 7

The information returned by a BAM report contains abbreviations of country names, such as CAN, NZL, or TUR.

How should an application developer use PRS to modify the report to display full country names, such as Canada, New Zealand, or Turkey?

- A. Configure a computed column.
- B. Configure business data aggregation.
- C. Configure an entity filter.
- D. Configure captions.

Correct Answer: A

QUESTION 8

There is a folder content template in a TaskSpace application. The application developer needs to display a double attribute as one of the columns that represents a credit score. Rather than showing the actual score from the repository, the application developer wants the display based on the following condition:

How should the application developer accomplish this?

- A. Create another attribute in the object type and use a TBO to store the display based on condition.
- B. Create another attribute in the object type and use a job to update the attribute with the value to display.
- C. Use a set value adaptor on the folder content template to resolve the display value.
- D. Configure a column in the folder content template with the conditional formatting.

Correct Answer: D

QUESTION 9

What must be created, either manually or as part of a pre-installation script, before application DAR files are installed?

- A. object types referenced by the application
- B. groups referenced in a workflow template
- C. ACL Templates referenced by the application



D. BOF Objects required by the application

Correct Answer: B

QUESTION 10

What is the first step in designing a process monitoring report in PRS?

- A. selecting the chart type
- B. adjusting chart properties
- C. adding report entities
- D. configuring captions

Correct Answer: C

QUESTION 11

In a TaskSpace application, which file formats can be page served when a document is viewed?

- A. TIFF and JPEG only
- B. PDF and TIFF only
- C. PDF and ODT only
- D. PDF, TIFF, and ODT

Correct Answer: B

QUESTION 12

A process dashboard contains four dashlets called A, B, C, and D. Managers should be allowed to view all four dashlets, but task processors should only be allowed to view dashlets A and C.

How can a dashboard designer satisfy this requirement?

- A. Set the permissions on each dashlet to grant access to the appropriate users.
- B. Add a new dashlet to the dashboard and configure dashlets A and C as drill-down targets of this new dashlet.
- C. Configure a mandatory filter for the dashboard that displays dashlet information based on user profile.
- D. Create a second dashboard that contains only dashlets A and C and provide appropriate role-based access to each dashboard.

Correct Answer: D

**QUESTION 13**

Which activity should be performed after deployment of xCP application DAR files when promoting an application from test to production?

- A. Create groups and users defined as performers in process template activities.
- B. Change the hostname, username, and password of FTP Inbound and Output Integration activities.
- C. Create ACLs and ACL templates referenced by xCP artifacts.
- D. Install all process templates that are deployed by the DAR.

Correct Answer: B

QUESTION 14

According to EMC best practices, how should BAM reports that return thousands of records be designed to improve reporting performance?

- A. Use table charts only.
- B. Avoid using activity entities.
- C. Limit drill-downs to one level.
- D. Include no more than 5 report entities.

Correct Answer: D

QUESTION 15

In a particular process, the Review Invoice activity has a different calendar than the one selected on the process. Which calendar will the system use to resolve timers created for the Review Invoice activity?

- A. the default system calendar
- B. the calendar applied to the activity
- C. the calendar applied to the process
- D. the calendar with the earliest date

Correct Answer: B

[E20-495 PDF Dumps](#)

[E20-495 VCE Dumps](#)

[E20-495 Exam Questions](#)