

Exam : E20-350

**Title : Networked Storage-san
implementation**

Version : DEMO

www.Pass4itSure.com

1. Which main sets of input are captured using SAN Architect?
- A. Zoning Requirements, Storage Arrays, Topologies
 - B. Servers and Storage Requirements, Performance, Topologies
 - C. Servers and Storage Requirements, Storage Arrays, Topologies
 - D. Servers and Storage Requirements, Storage Arrays, Device masking

Answer: C

2. What is the purpose of Auto-Port Assignment in SAN Architect?
- A. Virtual Fabric Creation
 - B. Auto matrix qualification
 - C. Reassign all fabric connections in a highly available fashion
 - D. Reassign only the connections that are NOT highly available

Answer: C

3. Which tool provides a visual representation of SAN and DAS designs for SAN Architect?
- A. Visio
 - B. Word
 - C. HTML
 - D. PowerPoint

Answer: A

4. Which tasks are performed using SAN Architect?
- A. Design, Model and Validate
 - B. Documentation, masking and Zoning lists
 - C. Statement of work, Project plan and Sales order
 - D. Part numbers, serial numbers and cable diagrams

Answer: A

5. What is one of EMC's recommendations for zoning in a B-series?
- A. Hard zoning
 - B. Mixed zoning
 - C. Single HBA zoning
 - D. Aliases for zone members

Answer: C

6. Which event causes a fabric rebuild in a B-Series fabric?
- A. cfgenable
 - B. Hard zoning
 - C. Fabric Manager

D. Switch/Director removed

Answer: D

7. What is a valid range of Domain IDs in interopmode for B-Series Switch/Directors?

A. 0-31

B. 1-239

C. 97-127

D. 128-239

Answer: C

8. What happens when Zoning Security is enabled in Fabric Manager?

A. Zoning only per serial connection

B. No zoning changes are permitted

C. Access zoning only with the primary fibre channel switch

D. Zoning is permitted from all switches with dedicated passwords

Answer: C

9. How many IP addresses are needed for installing an ED-12000B director?

A. 2

B. 4

C. 6

D. 8

Answer: B

10. What is the setting for creating a serial connection to a B-Series Switch/Director?

A. 2400, parity

B. 2400, no parity

C. 9600, parity

D. 9600, no parity

Answer: A

11. What is EMC's recommended maximum number of hops between two B-series Switch/Directors?

A. 2

B. 3

C. 4

D. 5

Answer: B

12. Which fibre channel feature automatically determines routing in a multi-switch fabric?

A. FSPF

- B. Routing
- C. Spanning Tree
- D. ISL Aggregation

Answer: A

13. Which type of cable is needed when connecting to a B-Series Switch/Director maintenance port using a hyper-terminal?

- A. Cross over cable
- B. Null Modem cable
- C. 10/100 Ethernet cable
- D. Pass through serial cable

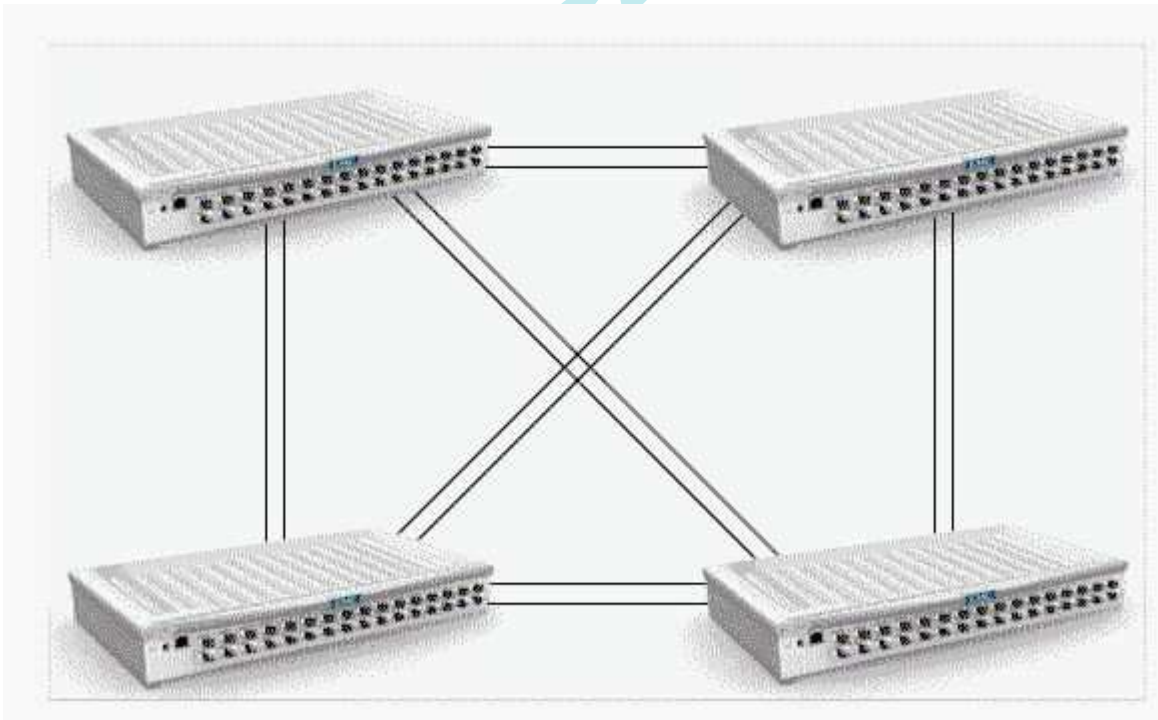
Answer: D

14. Which B-Series model allows non-disruptive firmware upgrades running firmware 4.1.x?

- A. DS-16B
- B. DS-16B2
- C. DS-16B3
- D. ED-12000B

Answer: D

15. How many "upstream" ISLs does the principal switch have?



- A. 0
- B. 1

C. 3

D. 6

Answer: A

16. What is the port setting for a long wave port for a Connectrix M-Series Switch/Director?

A. 10-100 enabled

B. Port Type to E port

C. Port Binding enabled

D. Port Speed to 2 Gb/sec

Answer: A

17. Which ISL configuration is recommended when installing Fiber 2km in length in a campus environment?

A. Single ISL using singlemode fiber and shortwave GBIC's

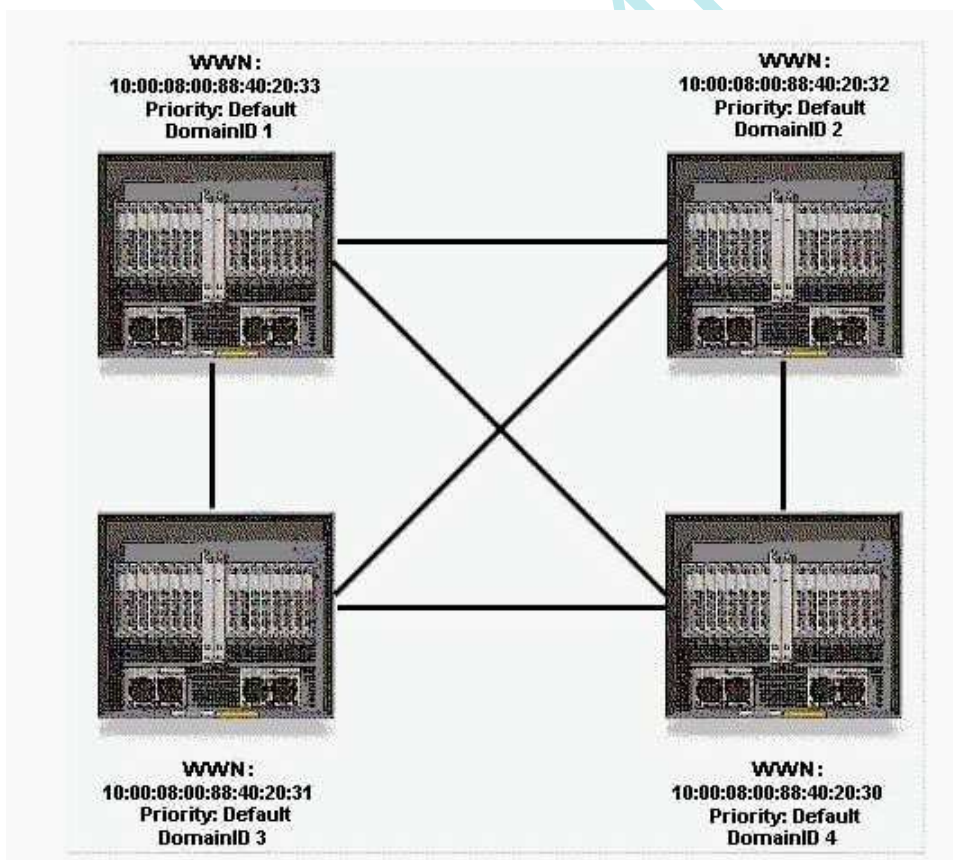
B. Single ISL using multimode fiber and Longwave GBIC's

C. Two ISL's using singlemode fiber and Longwave GBIC's

D. Two ISL's using multimode fiber and Longwave GBIC's

Answer: C

18. Which Domain ID will be the Principal Switch when the switches all come on-line?



A. 1

B. 2

C. 3

D. 4

Answer: D

19. What should be checked first if only the first 8 ports of a DS24M2 were functioning properly?

A. CTP card

B. Feature keys

C. Power supply

D. ASIC on the mother board

Answer: B

20. Which Connectrix Manager Service Processor log file provides zoning information?

A. Audit Log

B. Event Log

C. History Log

D. Hardware Log

Answer: A

www.Pass4itSure.com

Trying our product !

- ★ **100%** Guaranteed Success
- ★ **100%** Money Back Guarantee
- ★ **365 Days** Free Update
- ★ **Instant Download** After Purchase
- ★ **24x7** Customer Support
- ★ Average **99.9%** Success Rate
- ★ More than **69,000** Satisfied Customers Worldwide
- ★ Multi-Platform capabilities - **Windows, Mac, Android, iPhone, iPod, iPad, Kindle**

Need Help

Please provide as much detail as possible so we can best assist you.

To update a previously submitted ticket:



Submit A Ticket

One Year Free Update



Free update is available within One Year after your purchase. After One Year, you will get 50% discounts for updating. And we are proud to boast a 24/7 efficient Customer Support system via Email.



Money Back Guarantee

To ensure that you are spending on quality products, we provide 100% money back guarantee for 30 days from the date of purchase.



Security & Privacy

We respect customer privacy. We use McAfee's security service to provide you with utmost security for your personal information & peace of mind.

Guarantee & Policy | Privacy & Policy | Terms & Conditions

Any charges made through this site will appear as Global Simulators Limited.

All trademarks are the property of their respective owners.

Copyright © 2004-2014, All Rights Reserved.