



E20-329^{Q&As}

Technology Architect Backup and Recovery Solutions Design Exam

Pass EMC E20-329 Exam with 100% Guarantee

Free Download Real Questions & Answers **PDF** and **VCE** file from:

<https://www.pass4itsure.com/e20-329.html>

100% Passing Guarantee
100% Money Back Assurance

Following Questions and Answers are all new published by EMC
Official Exam Center

-  **Instant Download** After Purchase
-  **100% Money Back** Guarantee
-  **365 Days** Free Update
-  **800,000+** Satisfied Customers



**QUESTION 1**

An EMC NetWorker customer is currently performing all backups to physical tape. This includes multiple 7 TB databases with 2 weeks retention. Their current tape libraries are approaching end of support life.

The customer has asked for an EMC recommendation that will improve operational backup and restore reliability. What will meet the customer's requirements?

- A. EMC Disk Library
- B. Data Domain
- C. Avamar
- D. Deduplication Node

Correct Answer: A

QUESTION 2

A customer has a new EMC Avamar server with four 3.9 TB data nodes. This server is backing up two Avamar clients. The first client has 8 GB of RAM and two file systems. The first file system has 3 million files consuming .75 TB. The second file system contains 5 million files consuming 1 TB of space. The second client has 10 GB of RAM and one file system containing 4 million files is consuming 1.2 TB of space. Both clients will belong to the same backup group.

How long will the steady state backup group be expected to run?

- A. 5 hours
- B. 6 hours
- C. 8 hours
- D. 12 hours

Correct Answer: C

QUESTION 3

A customer is considering EMC Avamar for backing up servers in their remote offices. Currently they are facing WAN capacity issues and the backup of their Microsoft Exchange server at the primary site is critical. Which type of Avamar solution is suitable for the customer's environment?

- A. Single-node Avamar server at the primary
- B. Multi-node Avamar server for the remote offices
- C. AVE at each remote office location
- D. Centralized Avamar servers



Correct Answer: B

QUESTION 4

A customer recently implemented an EMC Data Domain system as the backup target for NetWorker using DD Boost. When reviewing the Data Domain Storage Unit Details report, you notice that the data drive for a particular client was not deduplicating well but the OS drive was.

What is the most likely cause of the deduplication issue?

- A. There was a great deal of scientific data.
- B. There were many small files in the dataset.
- C. Compression was not enabled on the client.
- D. Low Bandwidth Optimization was not enabled.

Correct Answer: A

QUESTION 5

An EMC Avamar customer is running a backup that is being directed to a Data Domain system. Although the backup completed successfully, the customer decides to delete the backup.

When does data, from expired backups, move from /cur to /DELETED?

- A. Next time the Avamar system runs garbage collection
- B. Immediately after expiration on the Avamar system
- C. Manually deleted on the Data Domain system by the administrator
- D. Next time the Data Domain file system cleaning operation runs

Correct Answer: A

QUESTION 6

An EMC NetWorker customer performs daily full LAN backups of a busy application server to physical tape. The application server uses the compressasm directive to reduce LAN backup traffic. While the backup completes within the required backup window, the customer notices that the application is performing poorly.

What can be done to improve application performance while maintaining minimum network traffic?

- A. Disable software compression
- B. Increase the max sessions on the tape drive
- C. Install a dedicated storage node on the backup client



D. Replace the physical library with an EMC Disk Library

Correct Answer: C

QUESTION 7

You have suggested to a customer that a Data Deduplication Assessment A (DDA:A) would help them evaluate deduplication in their environment. What would you recommend after the completion of the DDA:A scan?

- A. Schedule and run a File System Assessment
- B. Map drives for the DDA:B scan
- C. Rerun the DDA:A scan within one week of the first scan
- D. Perform the DDA:A backup script

Correct Answer: A

QUESTION 8

A customer currently has a multi-node EMC Avamar server with eight active storage nodes. They are currently at 85% GSAN capacity and receiving capacity warning messages. The customer would like to purchase four additional nodes for the system.

What is a best practice for adding capacity?

- A. Add two nodes at a time.
- B. Add one node at a time.
- C. No more nodes can be added. Add a new Avamar system.
- D. No more nodes can be added. Migrate to a larger Avamar system.

Correct Answer: A

QUESTION 9

You are sizing an EMC Data Domain system for a new customer. The customer has provided their capacity and performance requirements for the system.

When selecting a Data Domain model to meet their requirements, according to best practices, which buffer size should be used?

- A. 5% - 10%
- B. 10% - 15%
- C. 15% - 25%



D. 20% - 30%

Correct Answer: C

QUESTION 10

A customer has had a failure of the primary deduplication node and needs EMC NetWorker to recover the data from the replication node.

What will enable recovery from the replication target node?

- A. Replication node is specified in the replication node field of the client resource
- B. NetWorker deduplication node is configured as a dedicated replication target
- C. Replication between deduplication nodes is controlled by the NetWorker server
- D. Replication process and restore of replicated data require native Avamar for recovery

Correct Answer: A

QUESTION 11

A customer is piloting an EMC Data Domain system.

```
SSH Session# system show stats 2
10/29 12:34:26
INTERVAL: 2 secs
```

CPU busy	FS ops/s	FS proc	Net MB/s in	Net MB/s out	Disk read KiB/s	Disk write KiB/s	Disk busy	NVRAM KiB/s	Repl KB/s
10%	119	7%	17951	436	234	7532	2%	17816	0
9%	121	7%	17651	413	232	6543	1%	17455	0
10%	120	7%	17831	424	234	3405	2%	17663	0
8%	121	7%	18269	455	231	3345	3%	18111	0
9%	105	7%	17829	433	123	8345	5%	17654	0
10%	90	7%	17440	422	123	3453	2%	17322	0

Based on the Data Domain statistics shown in the exhibit, which type of data is being backed up?

- A. New data
- B. DD Boost backups
- C. Redundant data



D. Replicated data

Correct Answer: A

QUESTION 12

Scenario: The Chief Technical Officer (CTO) of a large company has directed their IT management staff to examine corporate-wide operations and find ways to limit the cost of operations. The corporate directives have prompted the adoption of company policies that include the use of virtualization for all new servers and as many services as possible. The company is subject to government regulations concerning data retention policies for confidential data. Data must be retained for seven years.

An audit of the backup and recovery environment is performed. The exhibit shows a typical site and how it is connected to the disaster recovery environment. Data in the primary site is configured on VMAX storage using FAST-VP to support multiple work load types on a single storage array.

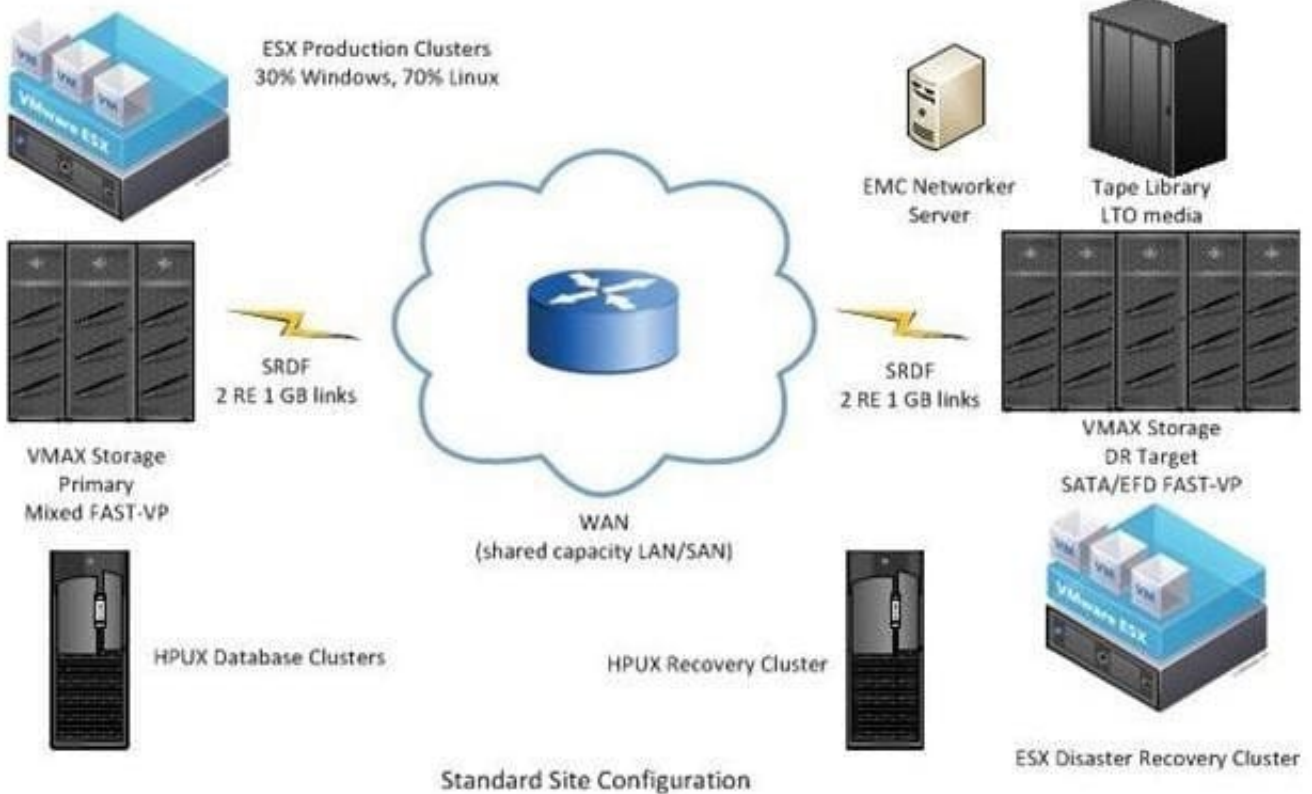
Data is protected by SRDF/A to a remote VMAX which acts as a target for multiple sites. The remote copy of the data is snapped and copied to tape. Retention is accomplished to governmental standards by offsite storage of tape in a remote protected facility.

The company has indicated that it has the following requirements in any proposed architecture for the backup and recovery environment:

Reduced power consumption Reduced floor space consumption Reduced storage capacity consumption Lower WAN bandwidth utilization Shorten RPO Decrease RTO Increase security Lower total cost of ownership (TCO)

Production Site Configuration

Common DR Site Configuration



Refer to Scenario and the exhibit.



To satisfy the stated requirements, the customer wants to use a virtual appliance to limit power and space consumption in their smaller locations. To replace the current SRDF/A replication model, which EMC technology should be recommended?

- A. Avamar Virtual Edition
- B. Data Domain
- C. NetWorker NDMP
- D. File Management Appliance VE

Correct Answer: A

QUESTION 13

A customer with 20,000 desktop/laptop (DT/LT) clients needs your guidance. They would like to determine what data to back up to their EMC Avamar DT/LT solution and what to exclude. They have the ability to recover any DT/LT OS with their in-house tools.

Based on best practices, what should be recommended?

- A. Back up only user files/folders with the flag #USERDOCS#, and skip OS and non-business files
- B. Back up the entire OS to take advantage of deduplication and Bare Metal Recovery
- C. Back up user files/folders with the system-state flag and skip all music/video files
- D. Back up the OS on a shorter retention time period and user files/folders on a longer retention time

Correct Answer: A

QUESTION 14

Scenario

A customer is looking to perform a data center refresh. They want to standardize their backup infrastructure by using EMC NetWorker, Avamar, and Data Domain in an integrated environment. The environment consists of:

A primary data center - NetWorker server, Data Domain, and Avamar A disaster recovery (DR) data center

-Data Domain only 220 remote sites Each remote site consists of approximately 30 clients and 1 storage node LAN speed at and between all sites is 1 Gb

The company's Chief Technology Officer (CTO) has indicated that data must be backed up locally. Then, the data must be copied offsite to the primary data center and DR data center. The entire solution must be managed from a single unified interface in order to configure and track backup jobs.

The company is subject to government regulations concerning data retention policies for confidential data.

Data has to be retained for seven years on tape at the DR data center.

The LAN administrator has indicated that the least amount of traffic should traverse the network. Based upon this



requirement, what is the recommended solution?

- A. Client Direct to Data Domain
- B. Client Direct to Avamar
- C. Traditional backup
- D. VADP backup using NBD transport mode

Correct Answer: A

QUESTION 15

You are asked to design an EMC NetWorker backup solution for a customer's data center with multiple database applications and a large amount of clients and data. The NetWorker backup server needs to be sized and configured properly for the customer environment.

What is a design consideration for the NetWorker backup server?

- A. Assign large clients to a separate NetWorker group and start the group first.
- B. Assign large clients to a separate NetWorker group and start the group last.
- C. Set NetWorker server Parallelism to the total number of Max Sessions on all devices.
- D. Create multiple NetWorker groups with up to 100 clients per group and disable Group Parallelism.

Correct Answer: A

[E20-329 PDF Dumps](#)

[E20-329 VCE Dumps](#)

[E20-329 Study Guide](#)