



C2180-371^{Q&As}

Web Services Development for IBM WebSphere Application Server
V7.0

Pass IBM C2180-371 Exam with 100% Guarantee

Free Download Real Questions & Answers **PDF** and **VCE** file from:

<https://www.pass4itsure.com/C2180-371.html>

100% Passing Guarantee
100% Money Back Assurance

Following Questions and Answers are all new published by IBM Official
Exam Center

-  **Instant Download** After Purchase
-  **100% Money Back** Guarantee
-  **365 Days** Free Update
-  **800,000+** Satisfied Customers



**QUESTION 1**

The project has finished its development phase and is ready to move to the quality assurance phase.

What is the recommended way to migrate the quality of service configuration from the development to the quality assurance environment?

- A. Recreate the policy sets using wsadmin scripts
- B. Recreate the policy sets using the Administrative Console
- C. Recreate the policy sets using IBM Rational Application Developer V7.5
- D. Copy the policy sets? files from the development to the quality assurance environment
- E. Export the policy set from the development environment and import into the quality assurance environment

Correct Answer: E

QUESTION 2

According to WS-I Basic Profile (BP), which of the following encodings should be used to ensure interoperability?

- A. rpc/literal
- B. rpc/encoded
- C. doc/literal
- D. doc/encoded

Correct Answer: AC

QUESTION 3

Which of the following is a supported method for validating WS-I compliance using IBM Rational Application Developer V7.5?

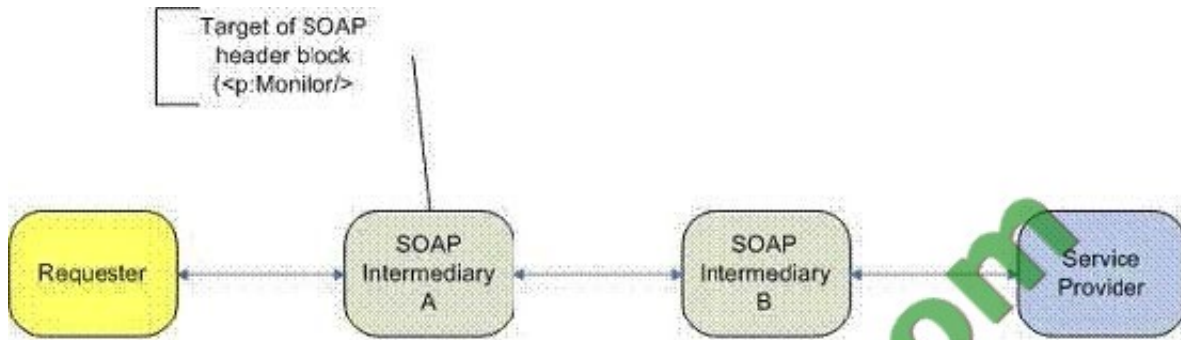
- A. Use the TCP/IP Monitor to save and review the WS-I message log
- B. Use the Web Services Explorer to load the Web service and select Validate Service
- C. Use the Universal Test Client (UTC) to invoke the Web service and view the response source
- D. Use the Profiling tools to profile the execution of the Web service and define a Watch for the SOAP messages

Correct Answer: A



QUESTION 4

Refer to the exhibits.



Given the diagram in Exhibit 1, and the message in Exhibit 2, how will the relay attribute be interpreted by the SOAP intermediary targeted mentioned in the first header block?

```
<?xml version="1.0" encoding="UTF-8"?>
<env:Envelope xmlns:env="http://www.w3.org/2003/05/soap-envelope" >
  <env:Header>
    <p:Monitor xmlns:p="http://example.com"
      env:role="http://www.w3.org/2003/05/soap-
      envelope/role/next"
      env:relay="true"
      env:mustUnderstand="true">
      <!--some info here -->
    </p:Monitor>
    <p:Audit xmlns:p="http://example.com"
      env:role="http://example.org/Log"
      env:mustUnderstand="true">
      <!--some info here -->
    </p:Audit>
    <!--Additional header blocks here -->
  </env:Header>
  <env:Body>
    <!--some Body info here -->
  </env:Body>
</env:Envelope>
```



- A. The header block will be forwarded to the next SOAP node after being processed.
- B. The header block will be forwarded to the next SOAP node without being processed.
- C. The header block will be removed after being processed and the message will be forwarded to the next SOAP node.
- D. The header block will be removed without being processed and the message will be forwarded to the next SOAP node.

Correct Answer: C



QUESTION 5

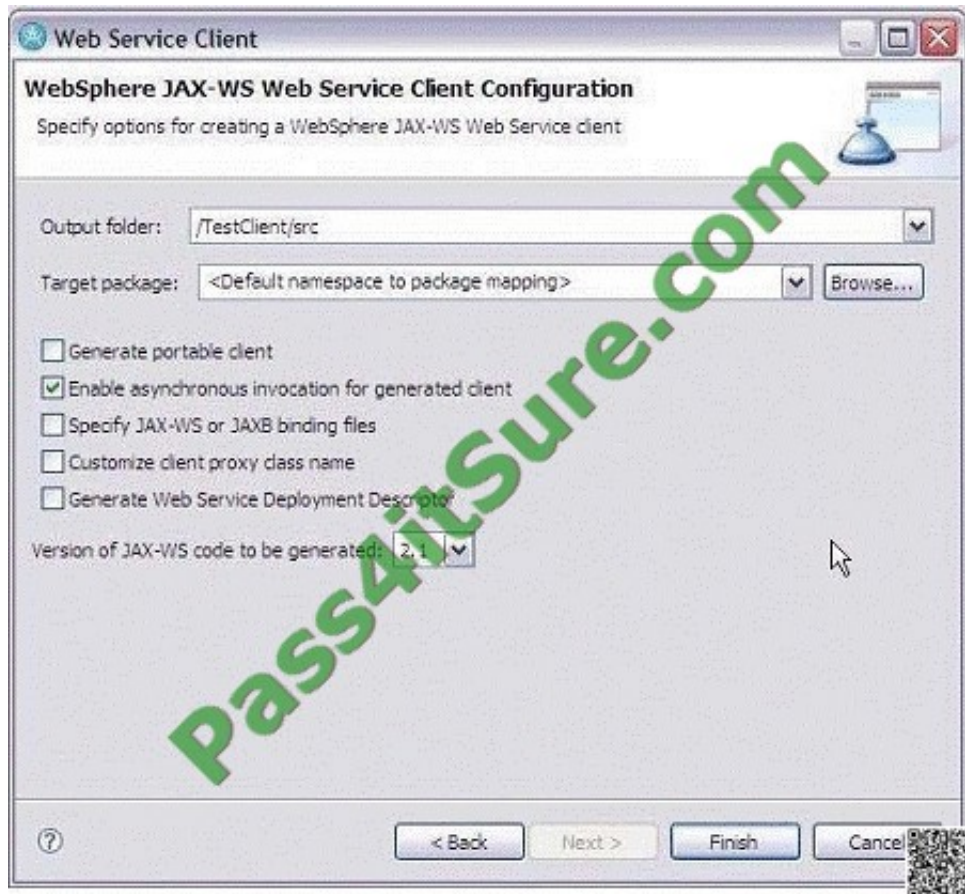
Which of the following scenarios are typical for using WS-Security Kerberos Token Profile?

- A. Social networking
- B. End-to-end security
- C. Internet Single Sign On
- D. Intranet Single Sign On

Correct Answer: BD

QUESTION 6

Refer to the exhibit.



A developer uses the Web service client wizard in IBM Rational Application Developer. What will be different in the generated artifacts?

- A. Additional methods will be generated to invoke the Web service.
- B. A JAX-RPC handler is created to handle the response from the Web service.
- C. The `ibm_webseviceclient_bnd.xmi` file specify that the invocation is asynchronous.



D. There is no change in the generated artifacts, only the methods called from the actual client will vary.

Correct Answer: A

QUESTION 7

A developer would like to restrict access to some operations of a Web service to a certain group of users. Which is the most appropriate implementation choice for the Web service?

- A. JavaBean
- B. Entity Bean
- C. Message Driven Bean
- D. Stateful Session Bean
- E. Stateless Session Bean

Correct Answer: E

QUESTION 8

A developer uses com.ibm.jaxws.thinclient_7.0.0.jar to invoke a Web service with:

- A. EJB clients.
- B. managed clients.
- C. unmanaged clients.
- D. dynamic web based clients.

Correct Answer: C

QUESTION 9

Which of the following is TRUE of the endptEnabler command?

- A. It requires an EJB Java archive (JAR) file as input
- B. It creates a bottom-up Web service from a stateless session EJB
- C. It generates IBM-specific deployment classes for a Web service application
- D. It adds a HTTP or JMS router module to an EJB-based Web service application

Correct Answer: D



QUESTION 10

Which interface in SAAJ generically represents any literal part in a SOAP message?

- A. Javax.xml.soap.Text
- B. Javax.xml.soap.Node
- C. Javax.xml.soap.DetailEntry
- D. Javax.xml.soap.SOAPElement
- E. Javax.xml.soap.SOAPBodyElement

Correct Answer: D

QUESTION 11

A developer used wsimport to generate the skeleton code for a Web service implementation. What is the purpose of the generated Object Factory class?

- A. The Object Factory class is the generated Service Endpoint Interface class
- B. The Object Factory class is the generated service provider class that is used by the JAX-WS client.
- C. The Object Factory class takes the target Namespace value and creates the directory structure.
- D. The Object Factory class allows you to programmatically construct new instances of the Java representation for XML content.

Correct Answer: D

QUESTION 12

Which of the following is used to invoke a Web service from an unmanaged client?

- A. JAX-WS dispatch API
- B. Deployment descriptor
- C. @Resource annotation
- D. @WebServiceRef annotation
- E. Service and Interface classes

Correct Answer: AE



To Read the [Whole Q&As](#), please purchase the [Complete Version](#) from [Our website](#).

Try our product !

100% Guaranteed Success

100% Money Back Guarantee

365 Days Free Update

Instant Download After Purchase

24x7 Customer Support

Average 99.9% Success Rate

More than 800,000 Satisfied Customers Worldwide

Multi-Platform capabilities - [Windows](#), [Mac](#), [Android](#), [iPhone](#), [iPod](#), [iPad](#), [Kindle](#)

We provide exam PDF and VCE of Cisco, Microsoft, IBM, CompTIA, Oracle and other IT Certifications. You can view Vendor list of All Certification Exams offered:

<https://www.pass4itsure.com/allproducts>

Need Help

Please provide as much detail as possible so we can best assist you.

To update a previously submitted ticket:



 <p>One Year Free Update Free update is available within One Year after your purchase. After One Year, you will get 50% discounts for updating. And we are proud to boast a 24/7 efficient Customer Support system via Email.</p>	 <p>Money Back Guarantee To ensure that you are spending on quality products, we provide 100% money back guarantee for 30 days from the date of purchase.</p>	 <p>Security & Privacy We respect customer privacy. We use McAfee's security service to provide you with utmost security for your personal information & peace of mind.</p>
---------------------------------------------------------------------------------------------------------------------------------------------------------------------------------------------------------------------------------------------------------------------------------------------------------------------------------	-------------------------------------------------------------------------------------------------------------------------------------------------------------------------------------------------------------------------------------------------------------	------------------------------------------------------------------------------------------------------------------------------------------------------------------------------------------------------------------------------------------------------------------------------------

Any charges made through this site will appear as Global Simulators Limited.

All trademarks are the property of their respective owners.

Copyright © pass4itsure, All Rights Reserved.