



C2090-011^{Q&As}

IBM SPSS Statistics Level 1 v2

Pass IBM C2090-011 Exam with 100% Guarantee

Free Download Real Questions & Answers **PDF** and **VCE** file from:

<https://www.pass4itsure.com/c2090-011.html>

100% Passing Guarantee
100% Money Back Assurance

Following Questions and Answers are all new published by IBM Official Exam Center

-  **Instant Download** After Purchase
-  **100% Money Back** Guarantee
-  **365 Days** Free Update
-  **800,000+** Satisfied Customers



**QUESTION 1**

If you use the IBM SPSS Statistics Select Cases dialog to conduct analysis on a subset of cases and you want to keep all cases in the same dataset, which option is appropriate?

- A. Copy unselected cases to a new dataset
- B. Copy selected cases to a new dataset
- C. Delete unselected cases
- D. Filter out unselected cases

Correct Answer: D

QUESTION 2

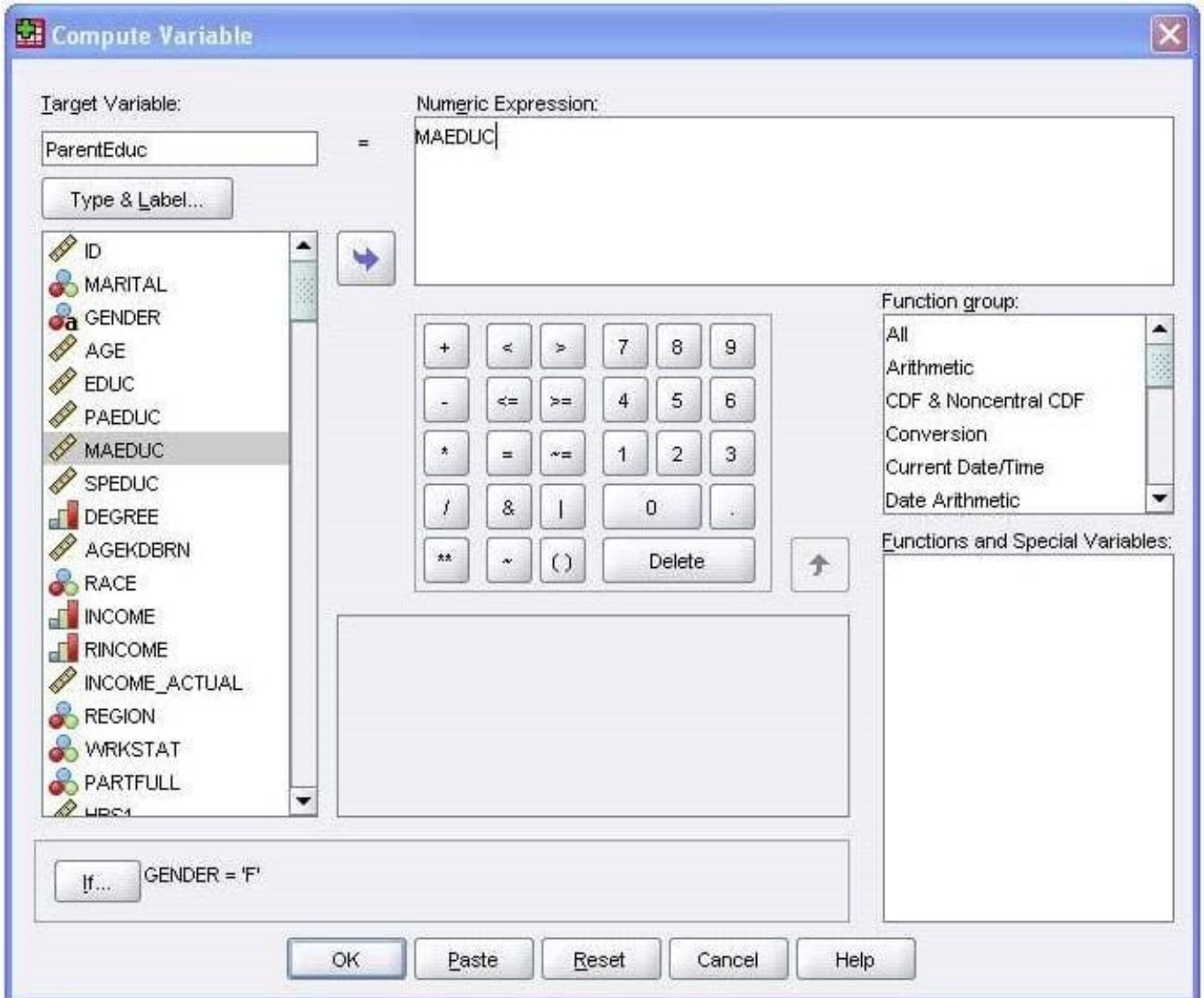
Suppose you want to copy and paste variable definitions from 481 variables in one data file to 481 corresponding variables in a second data file. The only way to do this is to select and copy each variable's definitions in the first file and paste to the corresponding variable in the second file.

- A. True
- B. False

Correct Answer: B

QUESTION 3

The Compute Variable dialog shown below performs which of the following operations? (Choose two.)



- A. Sets the value of ParentEduc equal to the value of MAEDUC.
- B. Sets the value of ParentEduc equal to the value of MAEDUC if the value of GENDER is
- C.
- D. Sets the value of ParentEduc equal to the system-missing value if the value of GENDER is blank.
- E. Sets the value of ParentEduc equal to the user-missing value if the value of GENDER is blank.

Correct Answer: BC

QUESTION 4

What information is contained in the journal file?

- A. Information relating to the IBM SPSS Statistics data file you are working with

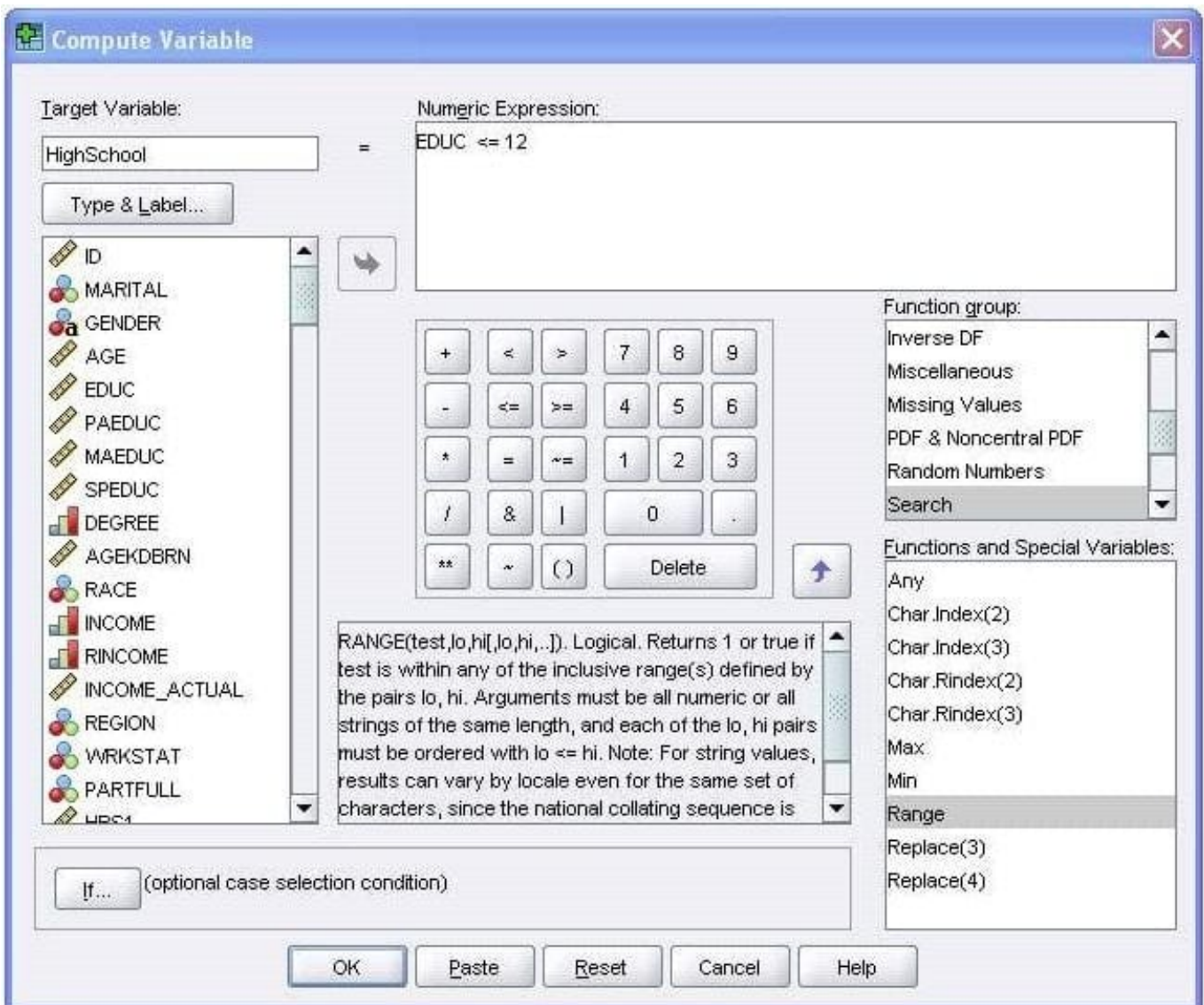


- B. Information relating to the IBM SPSS Statistics data file you are working with and any output created
- C. Syntax from all operations relating to manipulating variables
- D. Syntax from actions taken in dialog boxes or from running commands from the Syntax Editor

Correct Answer: D

QUESTION 5

Using the Compute Variable dialog below, the target variable HighSchool will have the following values. (Choose two.)



- A. Value 1 if EDUC is less than or equal to 12
- B. System-missing value if EDUC is greater than 12
- C. The same value as EDUC if EDUC is less than or equal to 12



D. Value 0 if EDUC is greater than 12

Correct Answer: AB

QUESTION 6

If you request an aggregated dataset or data file in the Aggregate procedure, the number of cases in the new aggregated file is equal to what?

- A. Number of cases in the original data file
- B. Number of aggregated summary variables
- C. Number of categories of the variables specified in the Break Variables list
- D. Number of cases that you specified in the Aggregate Data dialog box

Correct Answer: C

QUESTION 7

What statistical test should be used to assess whether the percentage differences observed in a crosstabs table could have occurred by chance?

- A. Correlation
- B. Linear Regression
- C. T-Test
- D. Chi-square test of independence

Correct Answer: D

QUESTION 8

What type of graph would you use to see the distribution of a scale variable?

- A. Bar chart
- B. Pie chart
- C. Histogram
- D. Scatter plot

Correct Answer: C

QUESTION 9



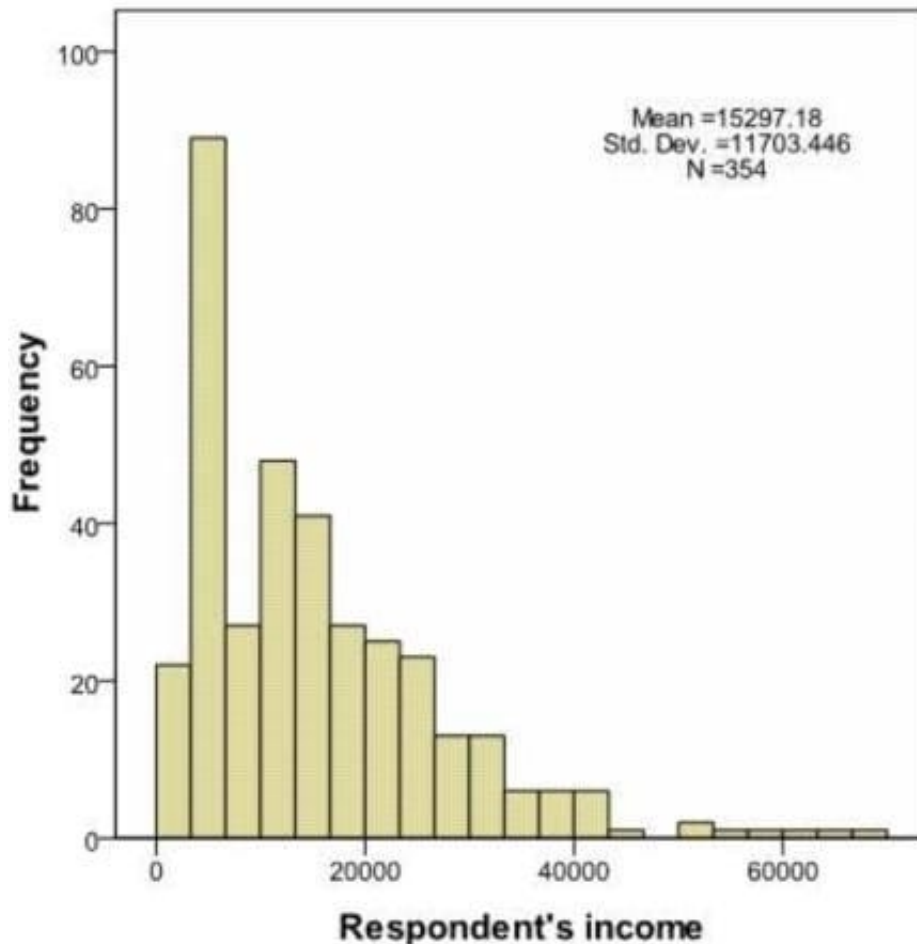
A paired samples t-test is different from an independent t-test because it:

- A. Assesses each person twice.
- B. Compares groups on correlations.
- C. Compares groups on means.
- D. Compares groups on variances.

Correct Answer: A

QUESTION 10

You have been asked to create a categorical variable from a scale variable, income, illustrated in the histogram below. The resulting categorical variable must have 5 categories with an approximately equal number of cases in each category. Which way would you accomplish this using the IBM SPSS Statistics Visual Binning dialog?



- A. Use the automatic option Equal Width Intervals
- B. Use the automatic option Equal Percentiles Based on Scanned Cases
- C. Use the automatic option Outpoints at Mean and Selected Standard Deviations Based on Scanned Cases



D. Specify Cut points manually at 10000, 20000, 30000, 40000 and 50000.

Correct Answer: B

[Latest C2090-011 Dumps](#)

[C2090-011 Study Guide](#)

[C2090-011 Exam Questions](#)