

**100%** Money Back  
**Guarantee**

**Vendor:** IBM

**Exam Code:** BAS-011

**Exam Name:** IBM SPSS Statistics Level 1 v2

**Version:** Demo

**QUESTION NO: 1**

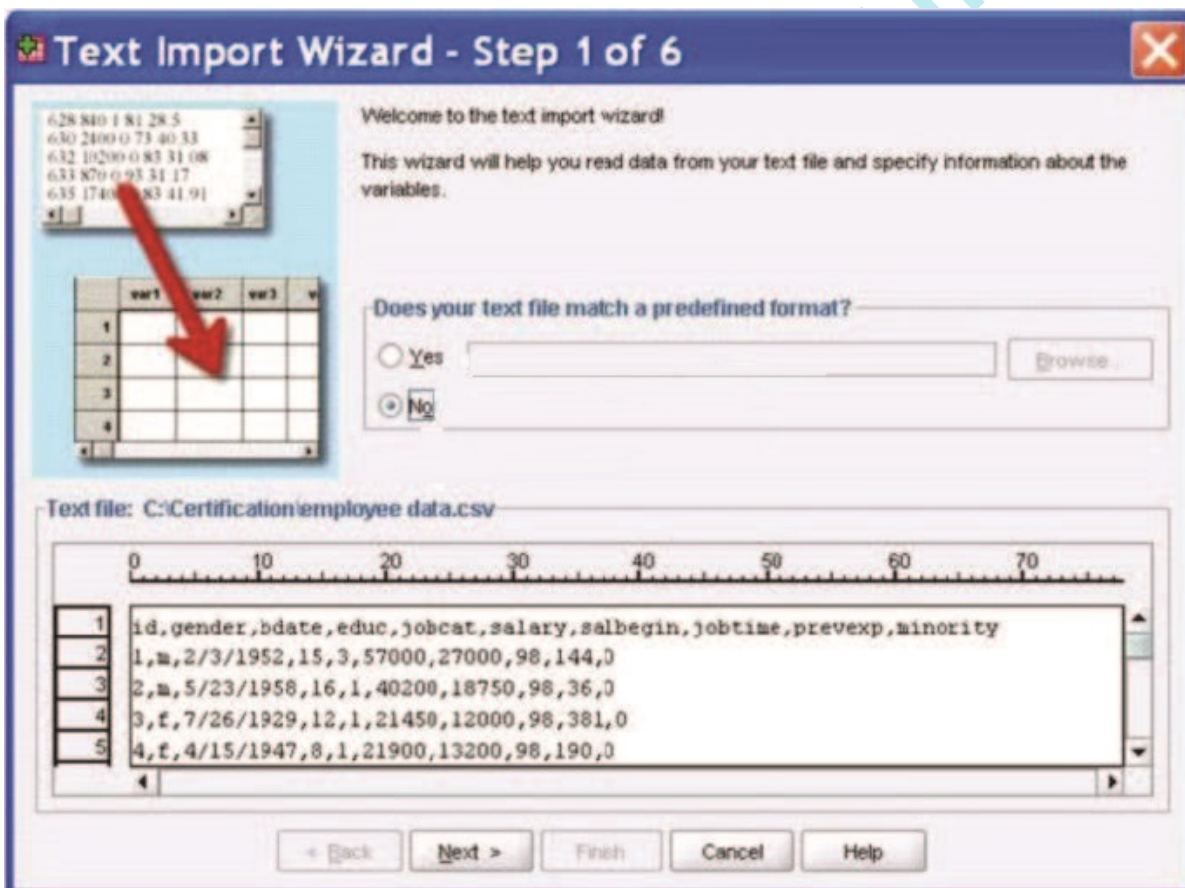
What statistical test should be used to assess whether the percentage differences observed in a crosstabs table could have occurred by chance?

- A. Correlation
- B. Linear Regression
- C. T-Test
- D. Chi-square test of independence

**Answer: D**

**QUESTION NO: 2**

The text file shown in the figure below is an example of a fixed format text file.



- A. True
- B. False

**Answer: B**

**QUESTION NO: 3**

In the Variable View, if you have a series of variables that share the same category coding scheme, you can enter value labels for one variable, then copy these labels to the other variables.

- A. True
- B. False

**Answer: A**

**QUESTION NO: 4**

For a variable salary we have the statistics as shown in the figure below.

	N	Minimum	Maximum	Mean
Current Salary	474	-9999.00	135000.00	33916.7321
Valid N (listwise)	474			

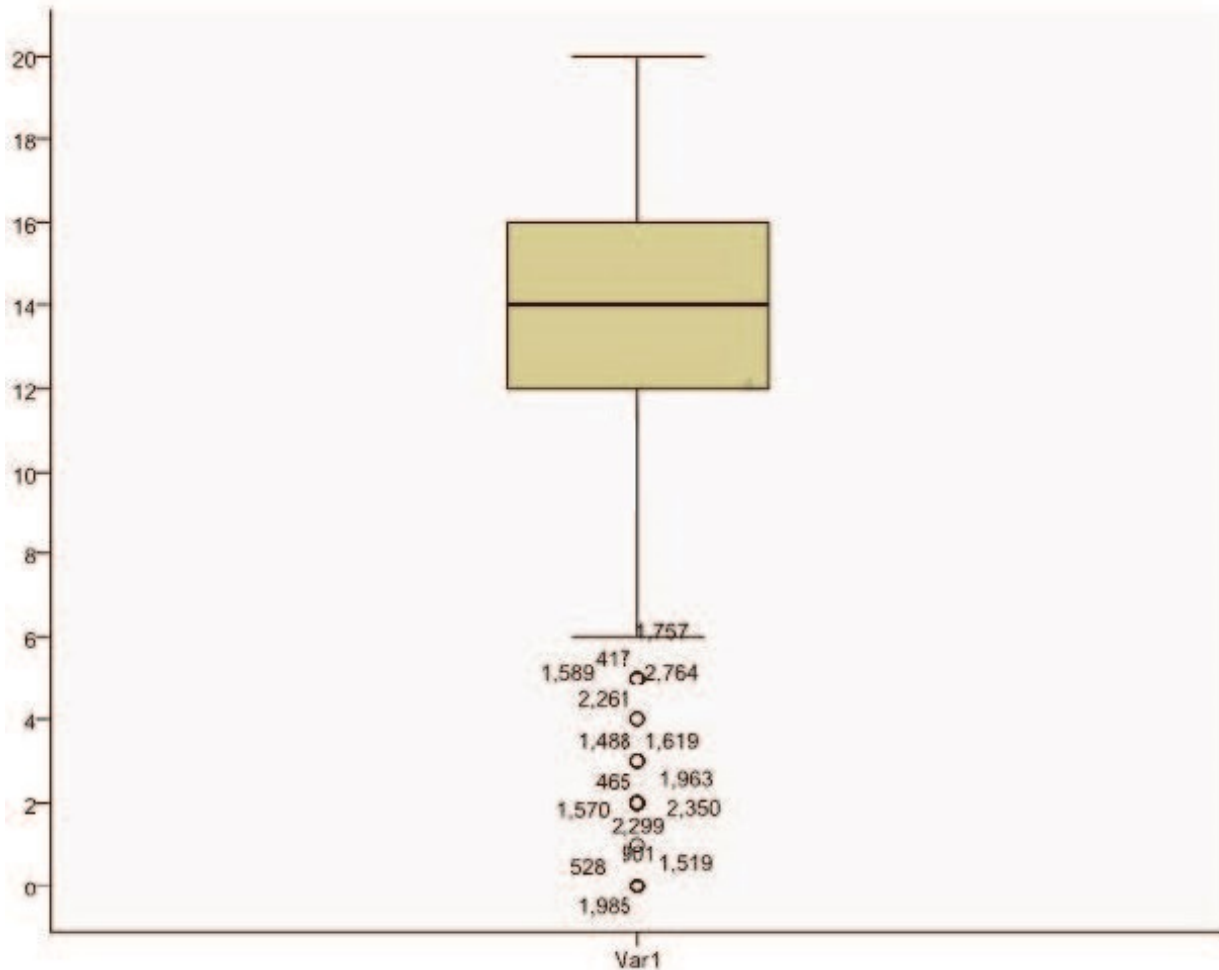
The reported Mean is incorrect because a value, -9999, is included in its calculation. How can this situation be fixed?

- A. Define -9999 as a system-missing value.
- B. Remove all cases with the value -9999 for the variable salary from the data file.
- C. Define -9999 as a user-missing value.
- D. Define -9999 as both a system- and user-missing value.

**Answer: C**

**QUESTION NO: 5**

Which statement is true about this box plot?



- A. The mean is 14.
- B. The standard deviation is 14 (20 minus 6).
- C. The standard deviation is 4 (16 minus 12).
- D. of the outliers are on the lower end of the distribution.

**Answer: D**

**QUESTION NO: 6**

Which statement is the correct interpretation of this crosstab table?

**BELIEF IN LIFE AFTER DEATH \* GENDER OF RESPONDENT Crosstabulation**

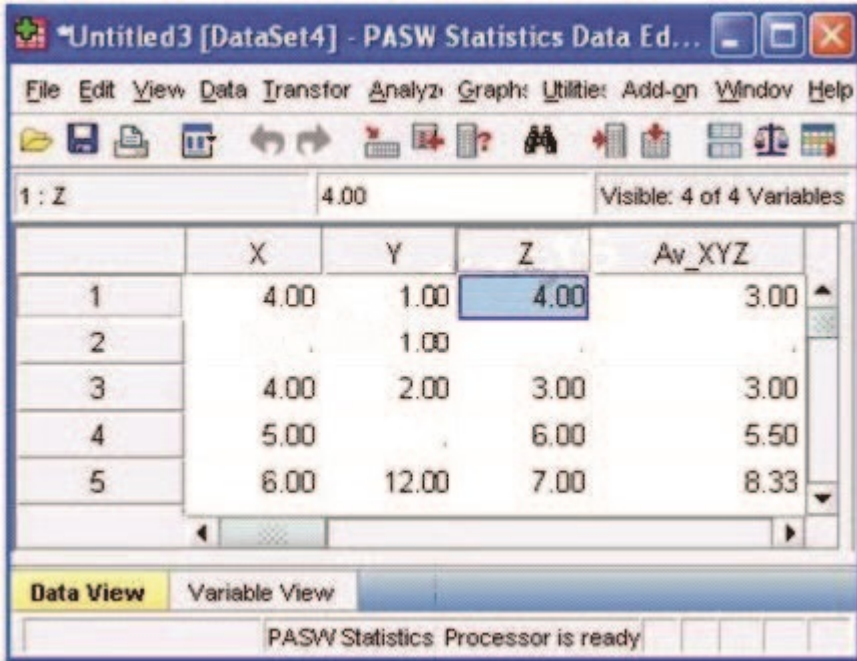
			GENDER OF RESPONDENT		Total
			Female	Male	
BELIEF IN LIFE AFTER DEATH	YES	Count	541	417	958
		% within BELIEF IN LIFE AFTER DEATH	56.5%	43.5%	100.0%
		% within GENDER OF RESPONDENT	86.0%	76.9%	31.8%
	NO	Count	88	125	213
		% within BELIEF IN LIFE AFTER DEATH	41.3%	58.7%	100.0%
		% within GENDER OF RESPONDENT	14.0%	23.1%	18.2%
Total	Count	629	542	1171	
	% within BELIEF IN LIFE AFTER DEATH	53.7%	46.3%	100.0%	
	% within GENDER OF RESPONDENT	100.0%	100.0%	100.0%	

- A. 56.5% of females believe in life after death.
- B. 86.0% of females believe in life after death.
- C. 27.5% of females believe in life after death.
- D. 53.7% of females believe in life after death.

**Answer: B**

**QUESTION NO: 7**

Consider the data file below and answer the following: The calculation of the mean of the variables X, Y, Z is contained in the variable Av\_XYZ. What method was used to calculate the mean?



1 : Z 4.00 Visible: 4 of 4 Variables

	X	Y	Z	Av_XYZ
1	4.00	1.00	4.00	3.00
2	.	1.00	.	.
3	4.00	2.00	3.00	3.00
4	5.00	.	6.00	5.50
5	6.00	12.00	7.00	8.33

Data View Variable View PASW Statistics Processor is ready

- A. The Compute Variable dialog and the expression  $(X+Y+Z) / 3$
- B. The Compute Variable dialog and the expression  $X+Y+Z/3$
- C. The Compute Variable dialog and the expression  $MEAN(X, Y, Z)$
- D. The Compute Variable dialog and the expression  $MEAN.2(X, Y, Z)$

**Answer: D**

#### QUESTION NO: 8

If you request an aggregated dataset or data file in the Aggregate procedure, the number of cases in the new aggregated file is equal to what?

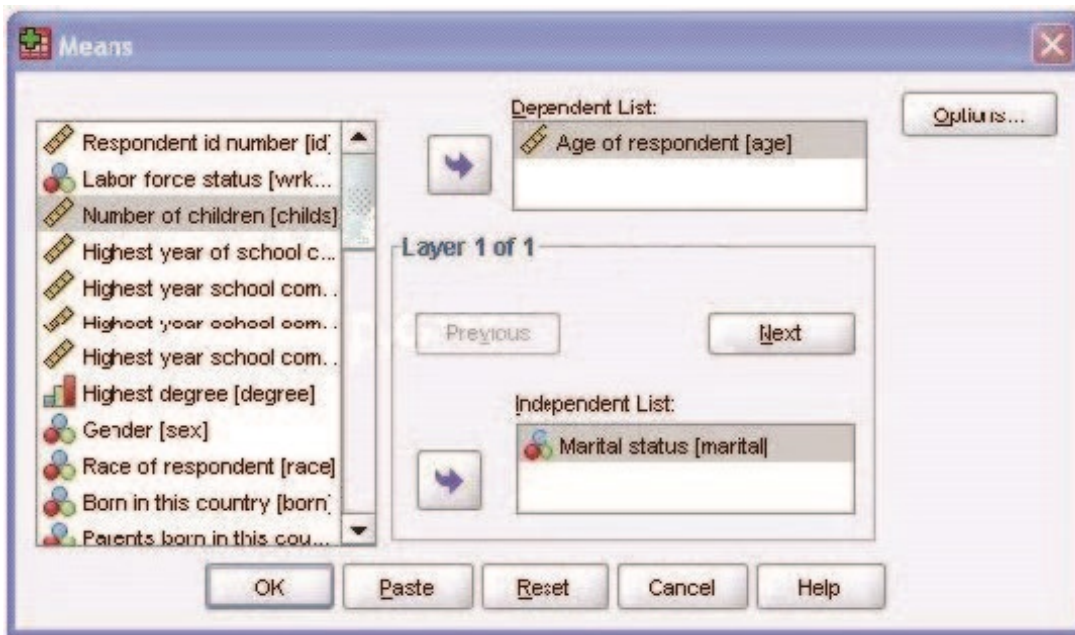
- A. Number of cases in the original data file
- B. Number of aggregated summary variables
- C. Number of categories of the variables specified in the Break Variables list
- D. Number of cases that you specified in the Aggregate Data dialog box

**Answer: C**



**QUESTION NO: 9**

What does the Paste button in this dialog box do?



- A. Runs a MEANS table.
- B. Pastes the MEANS command into a Syntax Editor window.
- C. Pastes the MEANS command into the Viewer window.
- D. Runs a MEANS table, opens a new Syntax Editor window, and pastes the MEANS command

**Answer: B**

**QUESTION NO: 10**

If you use the IBM SPSS Statistics Select Cases dialog to conduct analysis on a subset of cases and you want to keep all cases in the same dataset, which option is appropriate?

- A. Copy unselected cases to a new dataset
- B. Copy selected cases to a new dataset
- C. Delete unselected cases
- D. Filter out unselected cases

**Answer: D**

QUESTION NO: 11 Which interpretation is correct for this Regression Coefficients table?

**Coefficients<sup>a</sup>**

Model		Unstandardized Coefficients		Standardized Coefficients	t	Sig.
		B	Std. Error	Beta		
1	(Constant)	-624.687	1186.460		-.527	.599
	Employee Gender	-1629.252	264.350	-.249	-6.163	.000
	Minority Classification	-992.918	284.710	-.124	-3.487	.001
	Educational Level (years)	642.284	43.296	.589	14.835	.000
	Employee Age	35.871	17.265	.131	2.078	.038
	Work Experience (years)	22.695	23.602	.062	.962	.337
	Months on Job	-21.770	11.126	-.068	-1.957	.051

a. Dependent Variable: Beginning Salary

- A.** For every additional year that you get older, your beginning salary decreases on average by \$13.
- B.** For every additional year that you get older, your beginning salary decreases on average by \$35.9.
- C.** For every additional year that you get older, your beginning salary increases on average by \$13.
- D.** For every additional year that you get older, your beginning salary increases on average by \$35.9.

**Answer: D****QUESTION NO: 12**

In order to access the New Custom Attribute feature in the Data Editor, the Data Editor must be viewed from the:

- A.** Value Labels button.
- B.** Dialog Recall button.
- C.** Data View tab.
- D.** Variable View tab.

**Answer: D**



QUESTION NO: 13 Which operations are available from the File menu? (Choose three.)

- A. Open and Save data files
- B. Print the contents of the active IBM SPSS Statistics window
- C. Exit IBM SPSS Statistics
- D. Run the FREQUENCIES procedure

**Answer: A,B,C**

**QUESTION NO: 14**

A paired samples t-test is different from an independent t-test because it:

- A. Assesses each person twice.
- B. Compares groups on correlations.
- C. Compares groups on means.
- D. Compares groups on variances.

**Answer: A**

**QUESTION NO: 15**

Which variable name is correctly formed for use in an IBM SPSS Statistics data file?

- A. 3job\_categories
- B. job\_3\_categories
- C. Respondents' age
- D. Employee safety

**Answer: B**

**QUESTION NO: 16**

As of PASW Statistics 17, options for exporting tables to Excel files include which of the following? (Choose all that apply.)

- A. Create a new worksheet in an existing Microsoft Excel file
- B. Add to an existing worksheet
- C. Create a new Microsoft Excel file
- D. Export all layers of a pivot table

**Answer: A,B,C,D**

**QUESTION NO: 17**

Which transformation feature would you use to convert a string variable with values such as Female and Ma/e to a numeric variable with values 1 and 2?

- A. Define Variable Properties
- B. Automatic Recode
- C. Visual Binning
- D. Shift Values

**Answer: B**

**QUESTION NO: 18**

The Merge Files facility is located under which menu?

- A. View
- B. Transform
- C. Analyze
- D. Data

**Answer: D**

**QUESTION NO: 19**

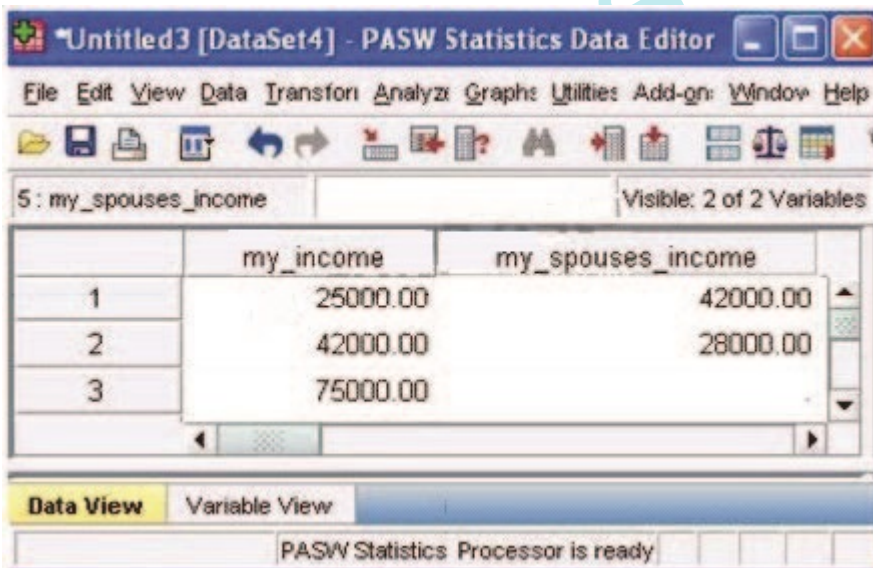
If you build an expression manually, as opposed to using a function (e.g., specify  $(V1+V2)/2$  instead of `MEAN (V1 , V2)`), which statement is true?

- A. If any of the variables used in the expression has a missing value, it will be ignored and the expression will proceed to evaluate with variables that have valid values.
- B. It will always return a valid value for each case, regardless of whether one or more of the source variable values are missing.
- C. If any of the variables used in the expression has a missing value, the result for that case is a system-missing value.
- D. If any of the variables used in the expression has a missing value, you will get a notification pointing this out before you proceed.

**Answer: C**

#### QUESTION NO: 20

Consider two variables, `my_income` and `my_spouses_income`, in the dataset below. You created a third variable, `total_income` using the Compute Variable dialog and the following expression: `total_income = my_income + my_spouses_income`. True or false: the value for the 3rd case will be a system-missing value.



	my_income	my_spouses_income
1	25000.00	42000.00
2	42000.00	28000.00
3	75000.00	

- A. True
- B. False

To Read the [Whole Q&As](#), please purchase the [Complete Version](#) from [Our website](#).

# Trying our product !

- ★ **100%** Guaranteed Success
- ★ **100%** Money Back Guarantee
- ★ **365 Days** Free Update
- ★ **Instant Download** After Purchase
- ★ **24x7** Customer Support
- ★ Average **99.9%** Success Rate
- ★ More than **69,000** Satisfied Customers Worldwide
- ★ Multi-Platform capabilities - **Windows, Mac, Android, iPhone, iPod, iPad, Kindle**

## Need Help

Please provide as much detail as possible so we can best assist you.

To update a previously submitted ticket:



 <b>One Year Free Update</b> Free update is available within One Year after your purchase. After One Year, you will get 50% discounts for updating. And we are proud to boast a 24/7 efficient Customer Support system via Email.	 <b>Money Back Guarantee</b> To ensure that you are spending on quality products, we provide 100% money back guarantee for 30 days from the date of purchase.	 <b>Security &amp; Privacy</b> We respect customer privacy. We use McAfee's security service to provide you with utmost security for your personal information & peace of mind.
---	---	--

## Guarantee & Policy | Privacy & Policy | Terms & Conditions

Any charges made through this site will appear as Global Simulators Limited.

All trademarks are the property of their respective owners.