



ASVAB-SECTION-3^{Q&As}

ASVAB Section Three : Mechanical Comprehension

Pass ASVAB ASVAB-SECTION-3 Exam with 100% Guarantee

Free Download Real Questions & Answers **PDF** and **VCE** file from:

<https://www.pass4itsure.com/asvab-section-3.html>

100% Passing Guarantee
100% Money Back Assurance

Following Questions and Answers are all new published by ASVAB
Official Exam Center

- ⚙️ **Instant Download** After Purchase
- ⚙️ **100% Money Back** Guarantee
- ⚙️ **365 Days** Free Update
- ⚙️ **800,000+** Satisfied Customers





QUESTION 1

What determines the speed of an output gear?

- A. None of these (Gear speed is not capable of alteration.)
- B. The size of gears.
- C. The speed of the input gear and the ratio of the number of teeth on each gear.
- D. The ratio of companion gears.

Correct Answer: C

QUESTION 2

Which term below best describes the OPPOSITE of an increase in speed?

- A. rotation
- B. deceleration
- C. friction
- D. velocity

Correct Answer: B

Deceleration means slowing down.

QUESTION 3

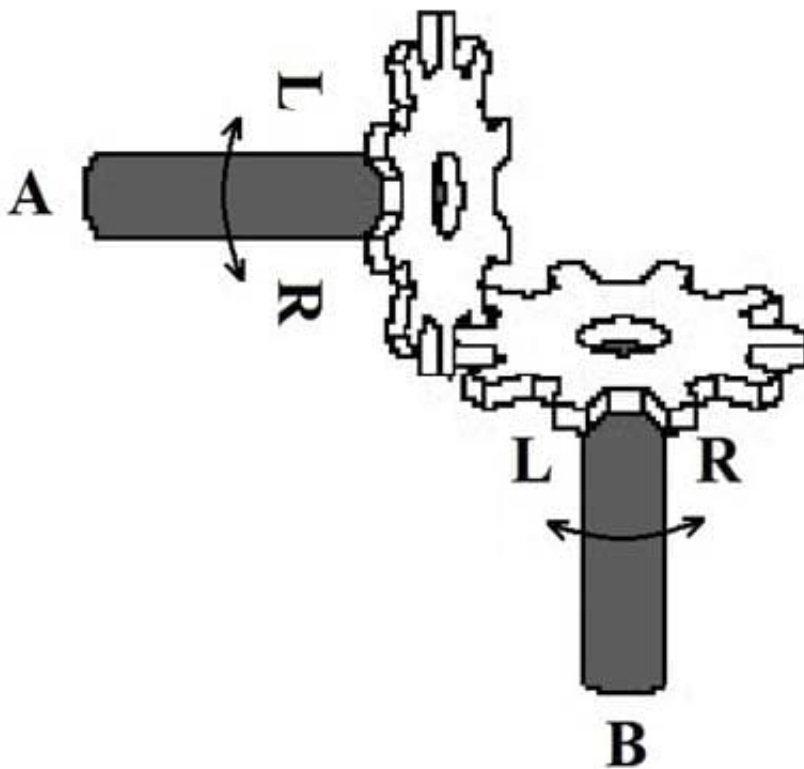
A string of six gears exists, with each gear turning in conjunction with one another.

Which gears operate in the same rotation?

- A. Gears 1, 2, and 3
- B. Gears 1, 3, and 5
- C. Gears 3, 4, and 5
- D. Gears 2, 4, and 5

Correct Answer: B

QUESTION 4



If Gear A turns left in the figure above, Gear B _____.

- A. won't turn
- B. turns left
- C. turns right
- D. It can't be determined.

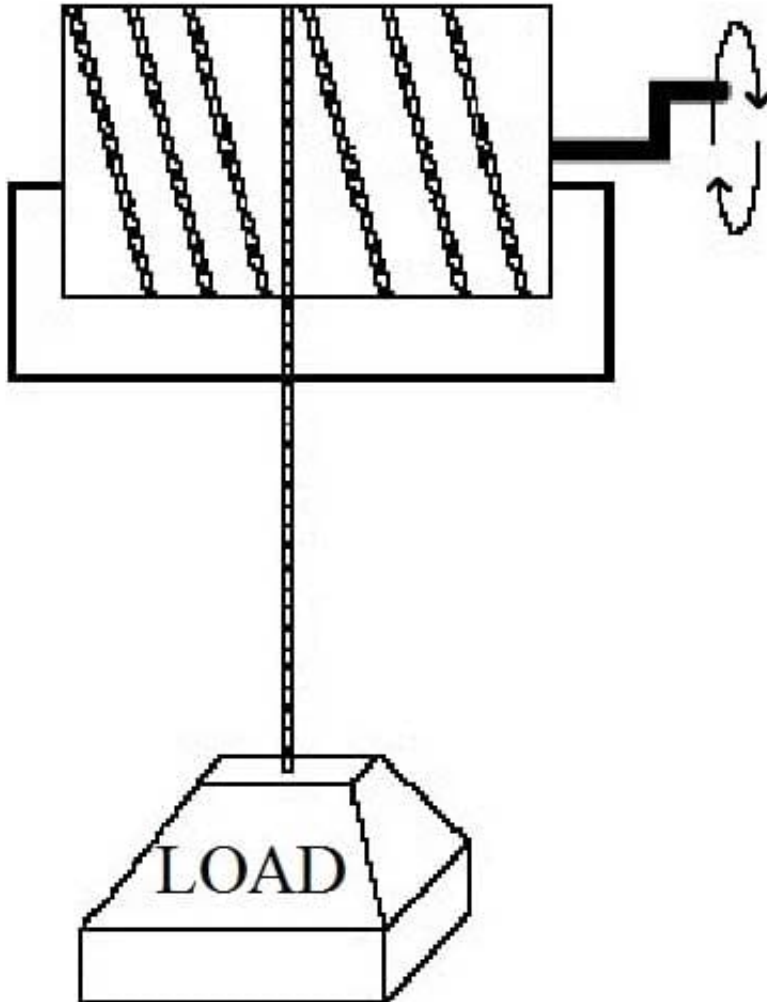
Correct Answer: C

Gears in mesh always turn in opposite directions.

QUESTION 5



Drum circumference 24 inches



With one complete revolution of the cable winch shown above, the load will move _____.

- A. 12 inches
- B. 6 inches
- C. 24 inches
- D. 36 inches

Correct Answer: C

One revolution of the winch will move the weight 24 inches, the circumference of the winch drum.

QUESTION 6

Water in an engine can cause damage in winter weather because _____.

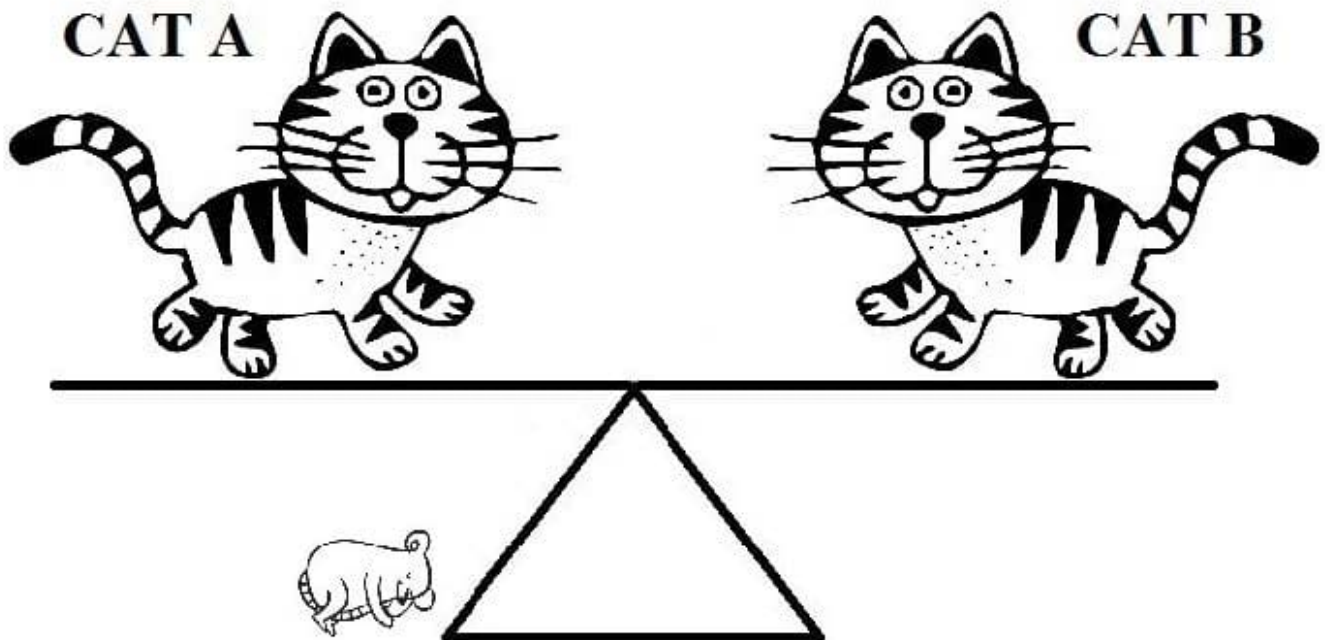


- A. it can vaporize
- B. water expands when it freezes
- C. ice is heavier than water
- D. cold water creates more steam than warm water

Correct Answer: B

Water expands when it freezes, possibly damaging engine components.

QUESTION 7



In the figure above, if Cat A moves toward the middle of the seesaw to get a better look at the mouse, Cat B will _____.

- A. remain stationary
- B. move toward the ground
- C. rise in the air
- D. instigate a cat fight

Correct Answer: B

The Cat B will move towards the ground.

QUESTION 8



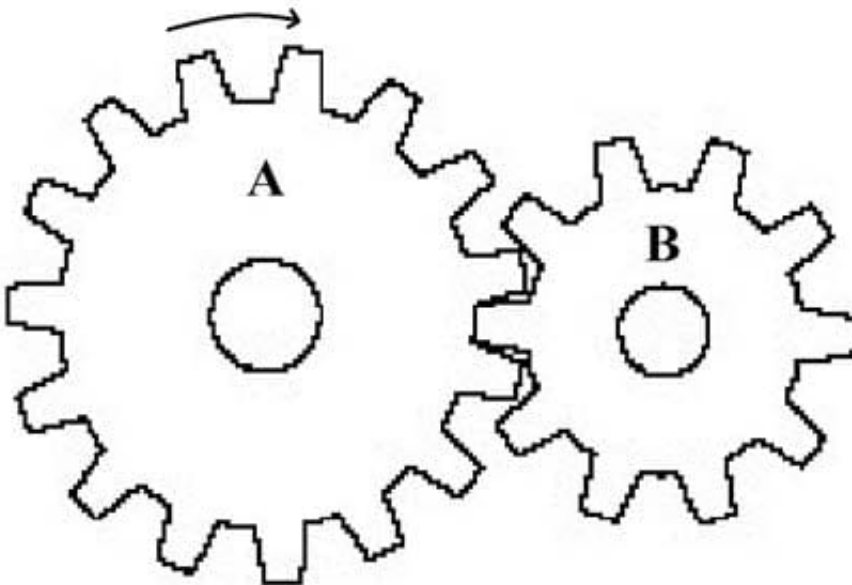
In the diagram in question 4, if the wheel on the left turns clockwise, which way will the wheel on the right turn?

- A. Clockwise
- B. Counterclockwise
- C. Counter-counterclockwise
- D. Unable to tell from the information given

Correct Answer: B

If the wheel on the left turns clockwise, the wheel on the right will turn counterclockwise.

QUESTION 9



If Gear A is revolving in a clockwise manner, as seen in the figure above, Gear B _____.

- A. remains stationary
- B. revolves in a clockwise manner
- C. revolves in a counterclockwise manner
- D. turns more slowly than Gear A

Correct Answer: C

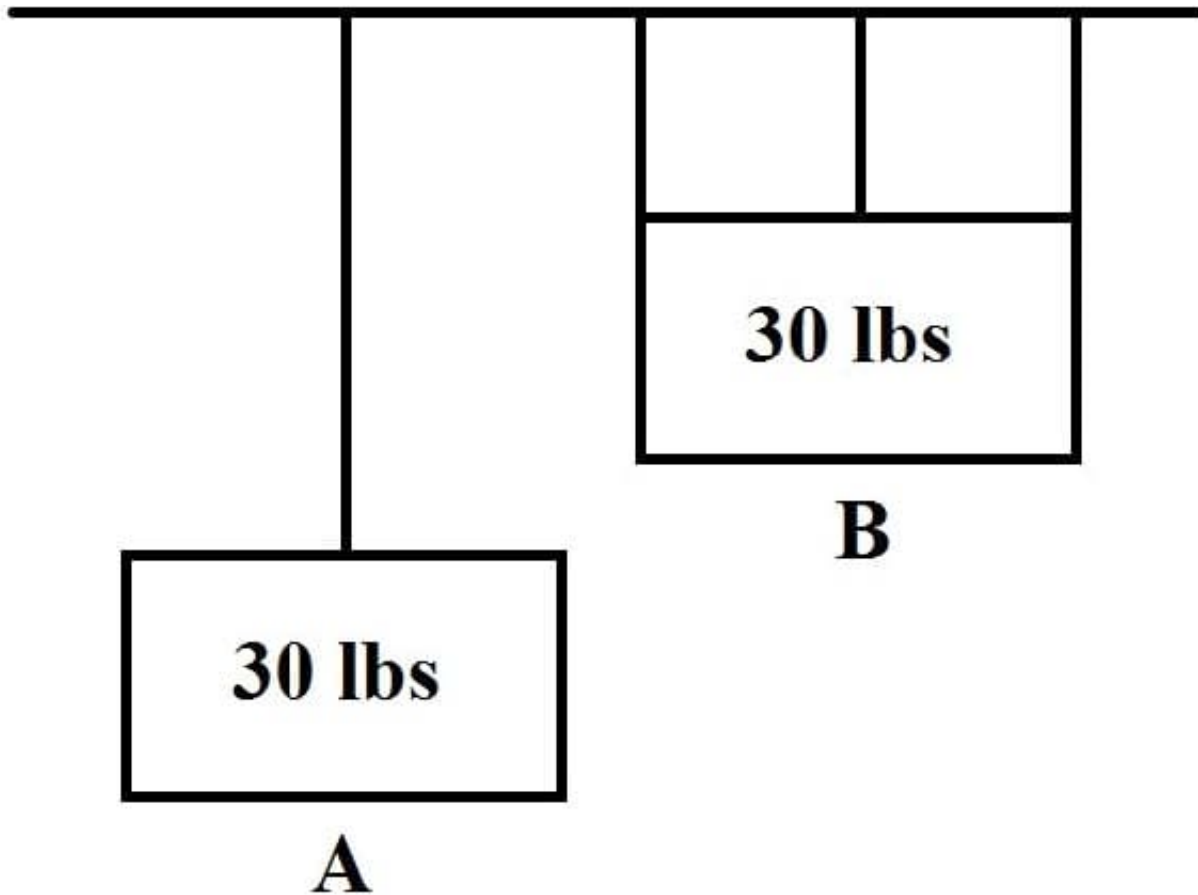
Meshed gears always turn in opposite directions.

QUESTION 10



In the illustration below, two 30-lbs blocks are attached to the ceiling using ropes, as shown.

Which of the following statements is true?



- A. All the ropes are under equal amounts of tension.
- B. The rope supporting Block A is under 2x the tension of the ropes holding Block B.
- C. The ropes supporting Block B are under 1/3 of the tension of the rope holding Block A.
- D. The rope holding Block A is under 1/3 of the tension of the ropes holding Block B.

Correct Answer: C

There are three ropes supporting Block B; therefore, they are under 1/3 the tension as the rope supporting Block A.

QUESTION 11

Which mechanical components are typically used between a wheel and an axle to reduce friction?

- A. springs
- B. hinges
- C. bearings

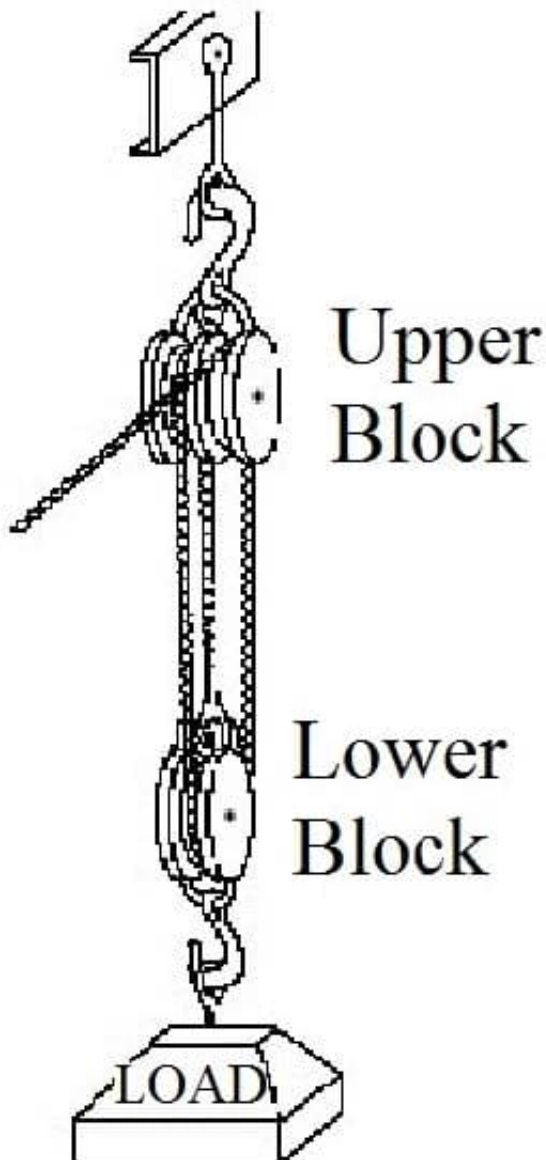


D. levers

Correct Answer: C

A set of bearings is typically a set of small metal balls packed in a groove and lubricated with grease or oil. The wheel rubs against one side of each ball, and the axle rubs against the other side. The net effect is that the wheel rolls much more easily.

QUESTION 12



When the block-and-tackle arrangement shown in the figure above is used to lift a load, all the following parts remain stationary EXCEPT _____.

- A. the upper hook
- B. the upper block



- C. the lower block
- D. none; all the parts move

Correct Answer: C

All the listed parts remain stationary except the lower block.

QUESTION 13

Heat is a form of _____.

- A. calories
- B. energy
- C. beneficence
- D. motion

Correct Answer: B

Heat is a form of energy - Calories measure heat, beneficence is an attitude or emotion, and motion is something that can cause heat.

QUESTION 14

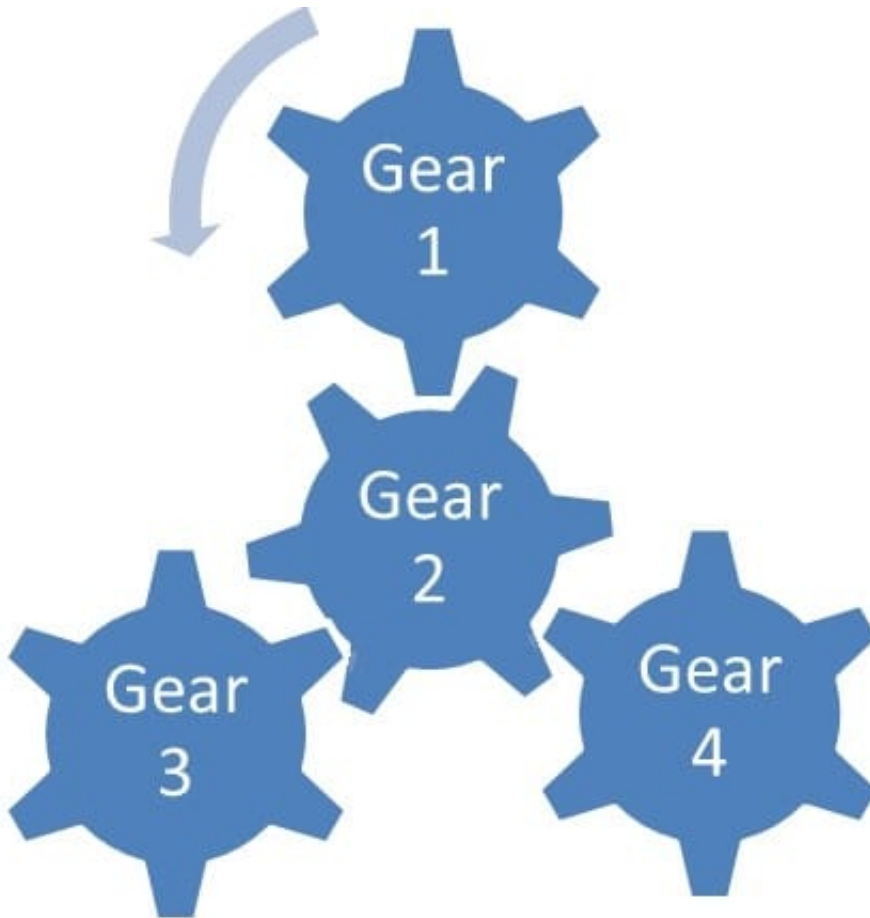
What is the definition and the danger of recoil?

- A. To recoil is to move quickly and efficiently, and it is not dangerous but desired.
- B. To recoil is to feel revolted or disgusted, and it is dangerous because it creates job dissatisfaction.
- C. To recoil is to respond in fear, and it is dangerous because engineers and workers need to remain in control. Losing control could result in serious injuries on the job.
- D. Recoil is the concept of "kicking back" or leaping back after being released. It may be dangerous due to the possibility of injury upon having equipment "leap back" rapidly.

Correct Answer: D

QUESTION 15

In the figure below, if gear 1 turns counterclockwise (as shown by the arrow), which of the gears will also turn in the same direction?



- A. 2 and 4
- B. 2 and 3
- C. 3 and 4
- D. 4

Correct Answer: C

Gear 1 turns counterclockwise causing gear 2 to turn clockwise which results in gear 3 and 4 to turn counterclockwise.

[Latest ASVAB-SECTION-3 Dumps](#)

[ASVAB-SECTION-3 PDF Dumps](#)

[ASVAB-SECTION-3 Exam Questions](#)