



# AD0-E117<sup>Q&As</sup>

Adobe Experience Manager Architect Master

## Pass Adobe AD0-E117 Exam with 100% Guarantee

Free Download Real Questions & Answers **PDF** and **VCE** file from:

<https://www.pass4itsure.com/ad0-e117.html>

100% Passing Guarantee  
100% Money Back Assurance

Following Questions and Answers are all new published by Adobe  
Official Exam Center

- ⚙️ **Instant Download** After Purchase
- ⚙️ **100% Money Back** Guarantee
- ⚙️ **365 Days** Free Update
- ⚙️ **800,000+** Satisfied Customers





### QUESTION 1

A media company wants to use AEM as content hub for multiple customer touch points:

1.

Brand-specific marketing websites hosted on AEM Sites ?Single Page Applications using headless content

2.

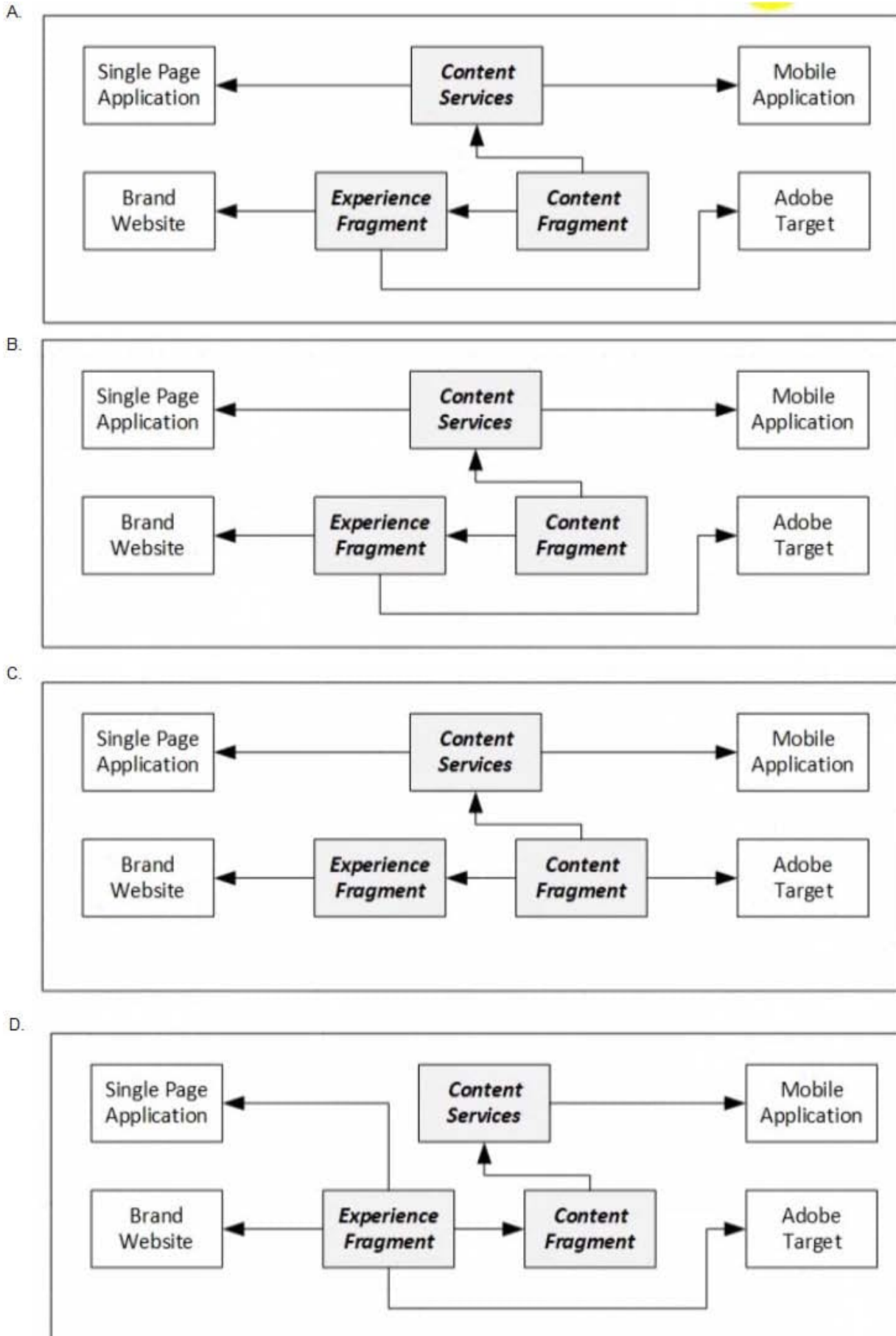
Native mobile applications

3.

Content offers in Adobe Target

The company wants to manage its content efficiently with its small editor staff. Text should be entered and reviewed only once, then reused for all touch points.

How should an Architect incorporate these requirements into a solution that leverages AEM Sites features?





- A. OptionA
- B. OptionB
- C. OptionC
- D. OptionD

Correct Answer: D

---

## QUESTION 2

A company with various departments wants to use tagging to improve search capability. Each department is restricted to use its own tags. How should an Architect organize the tags?

- A. Create a department sub-tag in each tag
- B. Use department ID as a prefix of each tag
- C. Create a namespace for each department
- D. Create tags in "departmentName:tagName" format

Correct Answer: C

---

## QUESTION 3

AEM Site users report that the web content pages render very slowly. An Architect notices that the CPU usages of the AEM Publish instances are spiking and reviews the following entry in the log:

```
[Fri Nov 27 23:11:00 2019] [I] [pid 16004 (tid 140134145820416)] Current cache hit ratio: 47.94 %
```

What should the Architect do to increase the dispatcher cache ratio and prevent the AEM Publish CPU usage spikes?

- A. Review and optimize the Dispatcher cache configuration
- B. Add additional AEM instances to the Publish Farm
- C. Create a cron job that will delete the dispatcher cache on a regular basis
- D. Add additional dispatcher servers

Correct Answer: C

---

## QUESTION 4

A media company surveys the end users of their AEM Sites website. The survey identifies that it is difficult to locate



content on the site due to lack of relevancy and slow performance when navigating through the large volume of content.

To address both issues, the business team suggests integrating an innovative taxonomy product to the company's AEM implementation. The product is new on the market and the development team has no experience with the technology.

Which two steps should an Architect recommend to evaluate this new feature? (Choose two.)

- A. Develop the integration as proof of concept with sample content
- B. Test usability of the feature with selected business users
- C. Develop the integration and deploy it to 50% of the production AEM instances
- D. Develop the integration as proof of concept with full production content
- E. Test usability of the feature with selected end users

Correct Answer: BD

---

#### QUESTION 5

A client's site does not show the latest page content for some site visitors. The client has two data centers with each configured with a Dispatcher connected to two Publish machines. The site load issue only occurs intermittently for visitors from one of the data centers.

Which step should the Architect take to resolve the issue?

- A. Disable caching on all impacted data centers Dispatchers to force the Publish machines to serve the page content
- B. Check the Publish instance(s) attached to the Dispatcher associated to the impacted data center
- C. Check the SSL certificate on the impacted data center's load balance.
- D. Review the log files on the Author instances to determine if there are any template errors

Correct Answer: C

---

#### QUESTION 6

In a client's test environment AEM QA Testers from multiple groups and regions are testing and making requests to the AEM application. Due to the sheer number of hosts making connections, an Architect needs a quick and easy way to allow any hosts to make requests to the AEM application.

Which approach should the Architect take to meet this requirement for this non-production environment?

- A. Add GET as a Filter Method in the Apache Sling Referrer OSGi Configuration
- B. Use Allowlists instead of Blocklists in the Dispatcher Configuration
- C. Restrict Clients that can flush the cache in the Dispatcher Configuration



D. Enable Allow Empty in the Apache Sling Referrer OSGi Configuration

Correct Answer: A

---

### QUESTION 7

A customer wants to migrate their AEM environment from an on-premise infrastructure to a public cloud to improve performance. The customer currently hosts many assets (images, videos, documents) in the DAM. Approximately 10 business users frequently upload new assets and update existing assets. Editors then use these assets on the sites.

What should an Architect do as part of this migration?

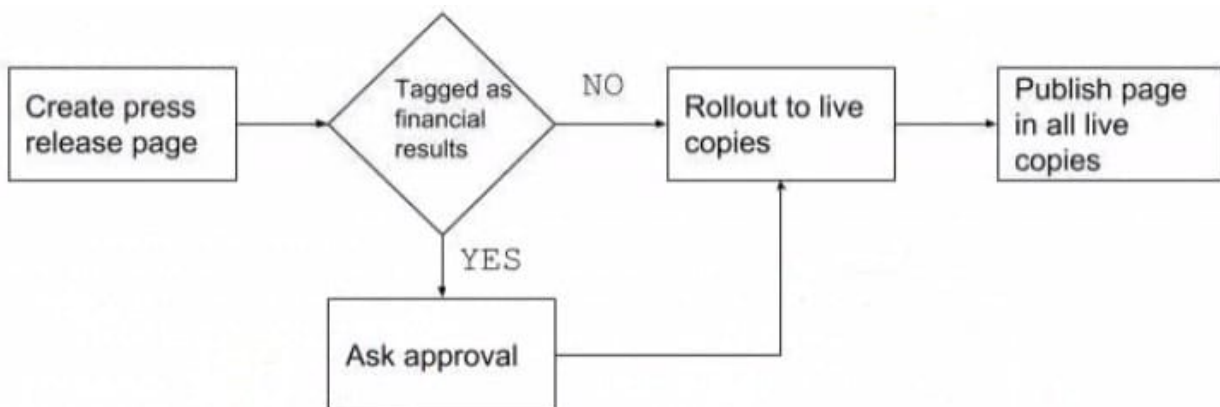
- A. Move to a shared datastore and enable binary less replication
- B. Set up Connected Assets to share the DAM assets in the sites
- C. Set up a horizontally scalable AEM environment on MongoDB
- D. Run online revision cleanup before moving to the new storage format

Correct Answer: D

---

### QUESTION 8

A customer wants to simplify and automate publishing press pages and defines the following flows:



What should the Architect recommend?

- A. Create a custom workflow
- B. Advise the customer to use Launches
- C. Implement a Sling event listener that triggers on page creation
- D. Configure MSM with the "Activate on Blueprint activation" option

Correct Answer: B

---

**QUESTION 9**

Users report cases where data inaccuracies are present in an AEM component that relies on AEM Search functionality. The AEM platform utilizes Lucene as its main search engine. How should an Architect resolve this issue?

- A. Add search indexes to Lucene search engine
- B. Change the search engine to Property Search
- C. Scale up server resources to meet demands
- D. Migrate search engine to an external Solr instance

Correct Answer: A

---

**QUESTION 10**

A customer has a requirement to allow authors to access AEM with single sign-on. To achieve this an Architect needs to integrate AEM with the customer's identity management system.

Which two actions could an Architect take to meet this requirement? (Choose two.)

- A. Implement the generic SSO Authentication Handler interface
- B. Configure the Sling Authentication Requirements for the OSGi HTTP Service
- C. Configure the SAML Authentication Handler
- D. Configure the generic SSO Authentication Handler
- E. Implement a custom JAAS Login Module

Correct Answer: AD

[Latest AD0-E117 Dumps](#)

[AD0-E117 VCE Dumps](#)

[AD0-E117 Exam Questions](#)