



AD0-E104^{Q&As}

Adobe Experience Manager Architect

Pass Adobe AD0-E104 Exam with 100% Guarantee

Free Download Real Questions & Answers **PDF** and **VCE** file from:

<https://www.pass4itsure.com/ad0-e104.html>

100% Passing Guarantee
100% Money Back Assurance

Following Questions and Answers are all new published by Adobe
Official Exam Center

-  **Instant Download** After Purchase
-  **100% Money Back** Guarantee
-  **365 Days** Free Update
-  **800,000+** Satisfied Customers





QUESTION 1

What defines the current policies applied for a node, which is set locally or inherited from parent nodes?

- A. Local Access Control Policies
- B. Effective Access Control Policies
- C. Global Access Control Policies
- D. Applicable Access Control Policies

Correct Answer: B

Reference: <https://docs.adobe.com/content/help/en/experience-manager-64/developing/devtools/developing-with-crxde-lite.html>

QUESTION 2

A customer wants to pre-define the set of components that page authors can change when authoring a page.

Which configuration should the Architect recommend?

- A. Add authors to administrators group
- B. Use allowedPaths properties on a template
- C. Use editable templates and policies
- D. Add components to the general group

Correct Answer: C

Reference: <https://docs.adobe.com/content/help/en/experience-manager-64/authoring/siteandpage/templates.html>

QUESTION 3

A customer's article search page queries using a XPath expression from a very large number of article pages on AEM. The page takes a long time to respond regardless of the number of results.

What is causing this issue?

- A. XPath expression based queries
- B. Dispatcher cache is not properly configured
- C. Rendering logic is not optimized for large results
- D. Indexing is not configured

Correct Answer: D

**QUESTION 4**

A user is part of the Employees LDAP group synchronized with AEM. The same user is added to the authors group in AEM. The user is then removed from the Employees group on the LDAP server.

What is the result during the next synchronization with AEM?

- A. The user is removed from both the Employees and the AEM authors groups
- B. The user is removed from the authors group but not the Employees group in AEM
- C. The user is not removed from either the Employees and the AEM authors groups
- D. The user is removed from the Employees group but not the authors group in AEM

Correct Answer: A

QUESTION 5

Which use case should be used for experience fragments?

- A. Creating collections of fragments
- B. Exporting a banner to Adobe Target
- C. Defining a content model
- D. Exporting a list of images to dynamic media

Correct Answer: B

Reference: <https://docs.adobe.com/content/help/en/experience-manager-64/authoring/authoring/experience-fragments.html>

QUESTION 6

A company wants to train smart tags to recognize a new tag using Adobe Sensei technology. What is the minimum number of images that must be uploaded to meet this requirement?

- A. 10
- B. 50
- C. 100
- D. 30

Correct Answer: D

**QUESTION 7**

A company with various departments wants to use tagging to improve search capability. Each department is restricted to use its own tags. How should an Architect organize the tags?

- A. Create a department sub-tag in each tag
- B. Use department ID as a prefix of each tag
- C. Create tags in "departmentName:tagName" format
- D. Create a namespace for each department

Correct Answer: D

QUESTION 8

A news agency editor wants to publish news articles to an intermediate Publish (preview) instance for internal review before publishing the article to production Publish instance.

Which two steps should the Architect recommend? (Choose two.)

- A. Create a separate live copy to preview content
- B. Set up a new replication agent for preview server
- C. Create a closed user group (CUG) for editors
- D. Create a custom publish workflow
- E. Create a reverse replication agent on preview server

Correct Answer: AB

QUESTION 9

A customer wants to reduce response time of content served from a single Linux based TarMK AEM setup. What should the Architect change?

- A. Publish installation to use TarMK farms
- B. Publish installation from TarMK to MongoMK
- C. Dispatcher configuration Linux to Windows server
- D. Publish installation from Linux to Windows server

Correct Answer: C

Reference: <https://docs.adobe.com/content/help/en/experience-manager-64/deploying/introduction/aemwith-mongodb.html>

**QUESTION 10**

A customer wants to improve efficiencies with their content creation processes for website optimization. Specifically, the customer wants to use content created in AEM inside of Adobe Target.

Which AEM feature should be used to meet the requirements?

- A. Content Fragments
- B. Teaser Component
- C. Experience Fragments
- D. Adobe Target Mbox

Correct Answer: C

QUESTION 11

A customer wants to cache a few secured pages served from AEM. What should the Architect do?

- A. Add Cache-Control header with optimal expiration time
- B. Enable permission-sensitive caching with an Auth Handler
- C. Cache secured pages on a different dispatcher server
- D. Use CDN for caching secured pages

Correct Answer: B

Reference: <https://www.argildx.com/technology/permission-sensitive-caching-psc/>

QUESTION 12

A customer wants to use Adobe Sensei (artificial intelligence) to summarize large blocks of text. Which AEM feature should be used?

- A. Experience Fragments
- B. Smart Tags using Adobe Sensei.
- C. Variation.
- D. Content Fragments

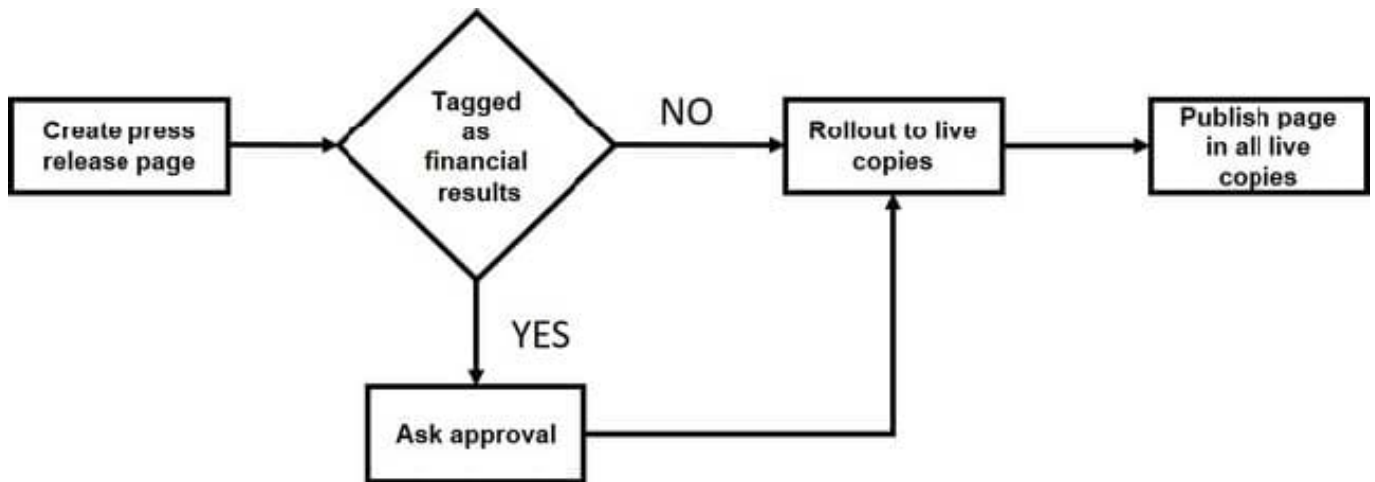
Correct Answer: C

Reference: <https://www.adobe.com/marketing/experience-manager/sites/ai-powered-scalability.html>

QUESTION 13



A customer to simplify and automate publishing press release pages and defines the following flow:



What should the Architect recommend?

- A. Configure MSM with the "Activate on Blueprint activation" option
- B. Create a custom workflow launches
- C. Advise the customer to use Launches
- D. Implement a Sling event listener that triggers on page creation

Correct Answer: B

QUESTION 14

Which method should be used to extend an existing AEM component for 6.2 and above?

- A. Use Sling Resource Merger to cross define the structures required
- B. Add new dialog boxes and code to the original component
- C. Copy the entire component structure from libs to apps and make changes
- D. Modify the Sling Resource Type on the original component

Correct Answer: A

QUESTION 15

A customer has a large MSM setup with more than 30 languages and 150 websites:

The content authors are frequently updating the master content. MSM is configured with the "Push on modify" rollout configuration so that any changes are immediately pushed to all live copies. The customer is complaining that they encounter performance issues on the AEM Author.



What should the Architect do?

- A. Configure MSM to use "Standard rollout config" with the "On Modification" trigger
- B. Configure MSM to use "Push on modify (shallow)"
- C. Configure MSM to use "Standard rollout config"
- D. Remove the referencesUpdate action from the "Push on modify"

Correct Answer: C

[AD0-E104 PDF Dumps](#)

[AD0-E104 VCE Dumps](#)

[AD0-E104 Study Guide](#)