



ACMP_6.3^{Q&As}

Aruba Certified Mobility Professional 6.3

Pass Aruba ACMP_6.3 Exam with 100% Guarantee

Free Download Real Questions & Answers **PDF** and **VCE** file from:

<https://www.pass4itsure.com/acmp-6-3.html>

100% Passing Guarantee
100% Money Back Assurance

Following Questions and Answers are all new published by Aruba
Official Exam Center

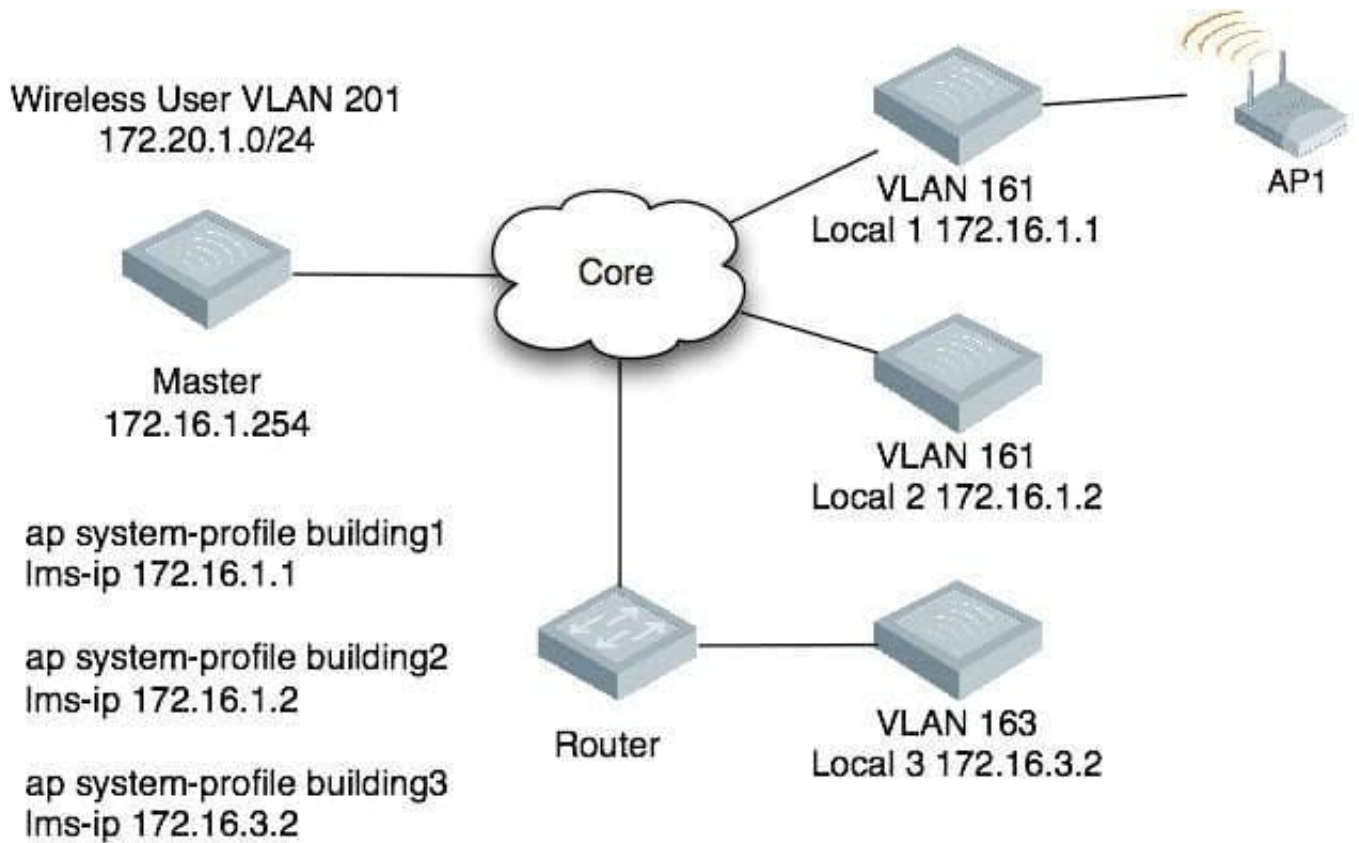
-  **Instant Download** After Purchase
-  **100% Money Back** Guarantee
-  **365 Days** Free Update
-  **800,000+** Satisfied Customers





QUESTION 1

Exhibit: The above diagram has one master and three local controllers. AP1 GRE terminates on controller Local 1. All controllers are configured with the wireless user VLAN 201. A wireless user associates with AP 1. Only L2 mobility is enabled.



Which elements will know about this association?

- A. Local 1 only
- B. Local 1 and the Master
- C. Local 1 and Local 2 and the Master
- D. Local 1 and AP1
- E. All Controllers

Correct Answer: B

QUESTION 2

Refer to the following configuration segment for this item.

```
ip access-list session anewone user network 172.16.1.0 255.255.255.0 any permit user host 172.16.1.1 any deny user
```



any any permit

An administrator wants users to have access to all destinations except 172.16.1.1. Based on the above Aruba Mobility Controller configuration segment, which statements best describe this policy? (Choose two)

- A. The rule user host 172.16.1.1 any deny is redundant because of the implicit deny all at the end.
- B. The rule user network 172.16.1.0 255.255.255.0 any permit is redundant.
- C. The two rules user network 172.16.1.0 255.255.255.0 any permit and user host 172.16.1.1 any deny need to be re-sequenced.
- D. The last statement user any any permit is not required
- E. The last statement should be any any any deny

Correct Answer: BC

QUESTION 3

Which of the following statements is true?

- A. Aruba Campus APs must be physically attached to the Aruba Controller.
- B. Aruba Campus APs must be in the same broadcast domain as the Controller.
- C. Aruba Campus APs can be in different subnets from the Controller.
- D. Aruba Campus APs must be physically attached to the same Layer 3 switch.
- E. Aruba Campus APs can be connected directly to the public internet.

Correct Answer: C

QUESTION 4

An Aruba 650 controller is functioning as a standby Master. How many APs can it control while in standby mode?

- A. 0
- B. 16
- C. 24
- D. 128
- E. 256

Correct Answer: A

QUESTION 5



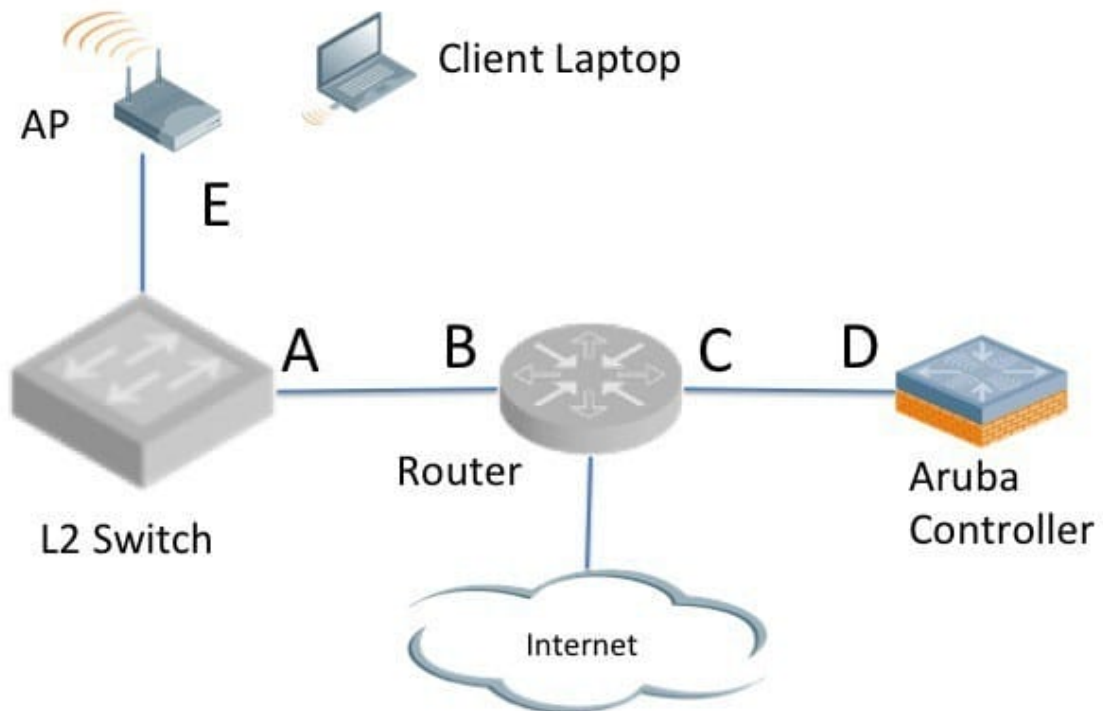
The permanent licenses on the controller will be deleted with the use of which command?

- A. Delete license
- B. Write erase
- C. Licenses cannot be deleted once activated
- D. Write erase all
- E. Reboot delete all

Correct Answer: D

QUESTION 6

Exhibit: Referring to the diagram provided for this question, if the Aruba controller is configured to perform L3 switching, what will be the wireless client laptop default gateway?



- A. A
- B. B



C. C

D. D

E. E

Correct Answer: D

QUESTION 7

Which method is NOT supported to provision an Aruba campus AP?

A. Telnet directly to AP

B. SSH to the AP's controller

C. Web interface to the AP's controller

D. Console to AP

E. CLI on controller

Correct Answer: A

QUESTION 8

When does a RAP's backup SSID begin broadcasting?

A. When the GRE tunnel to the controller is established.

B. When the IPsec tunnel to the controller is established.

C. When the controller cannot be reached with PAPI

D. When bridging is required for guest users.

E. When the controller cannot be reached with SSL

Correct Answer: C

QUESTION 9

ip access-list session anewone user network 10.1.1.0 255.255.255.0 any permit user any any permit host 10.1.1.1 host 10.2.2.2 any deny

A user sends a frame with the following attributes:

Source IP: 10.1.1.1 Destination IP: 10.2.2.2 Destination Port: 25

Based on the above Mobility Controller configuration file segment, what will this policy do with the user frame?



- A. The frame is discarded because of the implicit deny all at the end of the policy.
- B. The frame is discarded because of the statement: user host 10.1.1.1 host 10.2.2.2 deny.
- C. The frame is accepted because of the statement: user any any permit.
- D. The frame is accepted because of the statement: user network 10.1.1.0 255.255.255.0 any permit.
- E. This is not a valid policy.

Correct Answer: C

QUESTION 10

An Aruba controller is configured with the correct IP address and gateway information and is connected to the corporate LAN via a core layer 2 switch. Control Plane Security is not enabled on the network. An access point is provisioned with AP name and group and connected to a different Layer 2 switch on the corporate LAN that has IP connectivity to the core layer 2 switch. The AP powers on and layer 2 connects to the network, but the wireless radios do not power on.

Which could cause this condition? (Choose two)

- A. the layer 2 switches have ACLs that block GRE traffic
- B. the layer 2 switches are configured to block IPSec traffic
- C. a DHCP server is not configured for the segment to which the AP is connected
- D. the AP's mac address needs to be configured in the Aruba controller whitelist.
- E. the AP and controller are in different subnets

Correct Answer: AC

QUESTION 11

With CPsec enabled, which tunnel protocol is used between APs and Controllers in an Aruba environment?

- A. EAP
- B. SSH
- C. IPinIP
- D. Mobile IP
- E. IPSec

Correct Answer: E

QUESTION 12



A controller is provisioned in L3 Mode for Wireless Users. What must be configured on the controller to enable DHCP requests to an external DHCP server?

- A. an IP helper command
- B. the IP address of the DNS server
- C. the IP address of the APs
- D. the subnet address of the DHCP server
- E. the DHCP server IPSEC Key

Correct Answer: A

QUESTION 13

An administrator wants to assign a VLAN to a user based upon the authentication process using Vendor Specific Attributes (VSA). Where are Aruba Vendor Specific Attribute (VSA) values provisioned?

- A. controller
- B. client
- C. RADIUS server
- D. Internal user database
- E. Option 60 of DHCP reply

Correct Answer: C

QUESTION 14

Which dual radio access point models support concurrent operations in the 2.4Ghz band as well as the 5Ghz band? (Choose three)

- A. AP-92
- B. AP-93
- C. AP-105
- D. AP-224
- E. AP-135

Correct Answer: CDE

QUESTION 15



Which of the following Aruba controllers is able to provide IEEE 802.3af? (Choose two)

- A. 3200
- B. 620
- C. 650
- D. 6000 with M3
- E. 7000

Correct Answer: BC

[ACMP 6.3 PDF Dumps](#)

[ACMP 6.3 VCE Dumps](#)

[ACMP 6.3 Braindumps](#)