



# OG0-023<sup>Q&As</sup>

ArchiMate 2 Combined Part 1 and 2 Examination

## Pass The Open Group OG0-023 Exam with 100% Guarantee

Free Download Real Questions & Answers **PDF** and **VCE** file from:

<https://www.pass4itsure.com/og0-023.html>

100% Passing Guarantee  
100% Money Back Assurance

Following Questions and Answers are all new published by The Open Group Official Exam Center

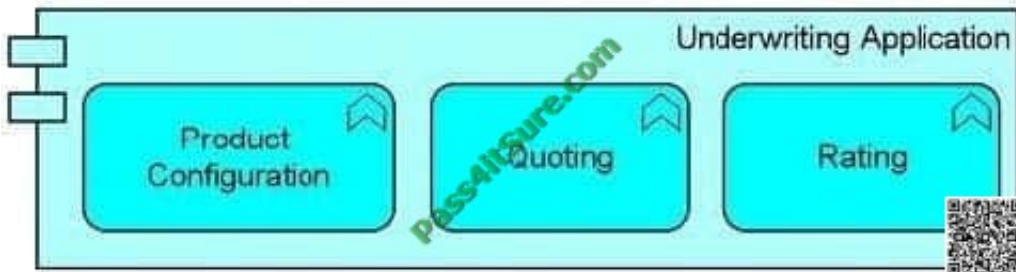
-  **Instant Download** After Purchase
-  **100% Money Back** Guarantee
-  **365 Days** Free Update
-  **800,000+** Satisfied Customers





### QUESTION 1

Consider the following diagram:



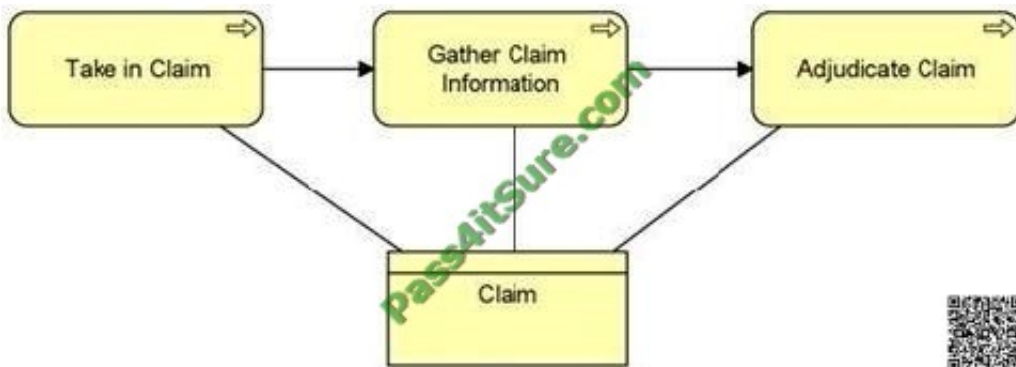
What does the diagram express about the Underwriting Application?

- A. It has three distinct components
- B. It processes three different types of data objects
- C. It performs three different functions
- D. It groups together three components that are not a part of the Underwriting Application

Correct Answer: C

### QUESTION 2

At ArchiSurance, the Take in Claim process creates a Claim business object, while the remaining processes in the sequence below refer to and update the Claim business object.



Which structural relationship could replace the association relationships in the diagram to more precisely describe how ArchiSurance Claim processes interact with the Claim business object?

- A. Used By
- B. Flow
- C. Assignment



D. Access

Correct Answer: D

---

### QUESTION 3

#### Scenario

Please read this scenario prior to answering the question

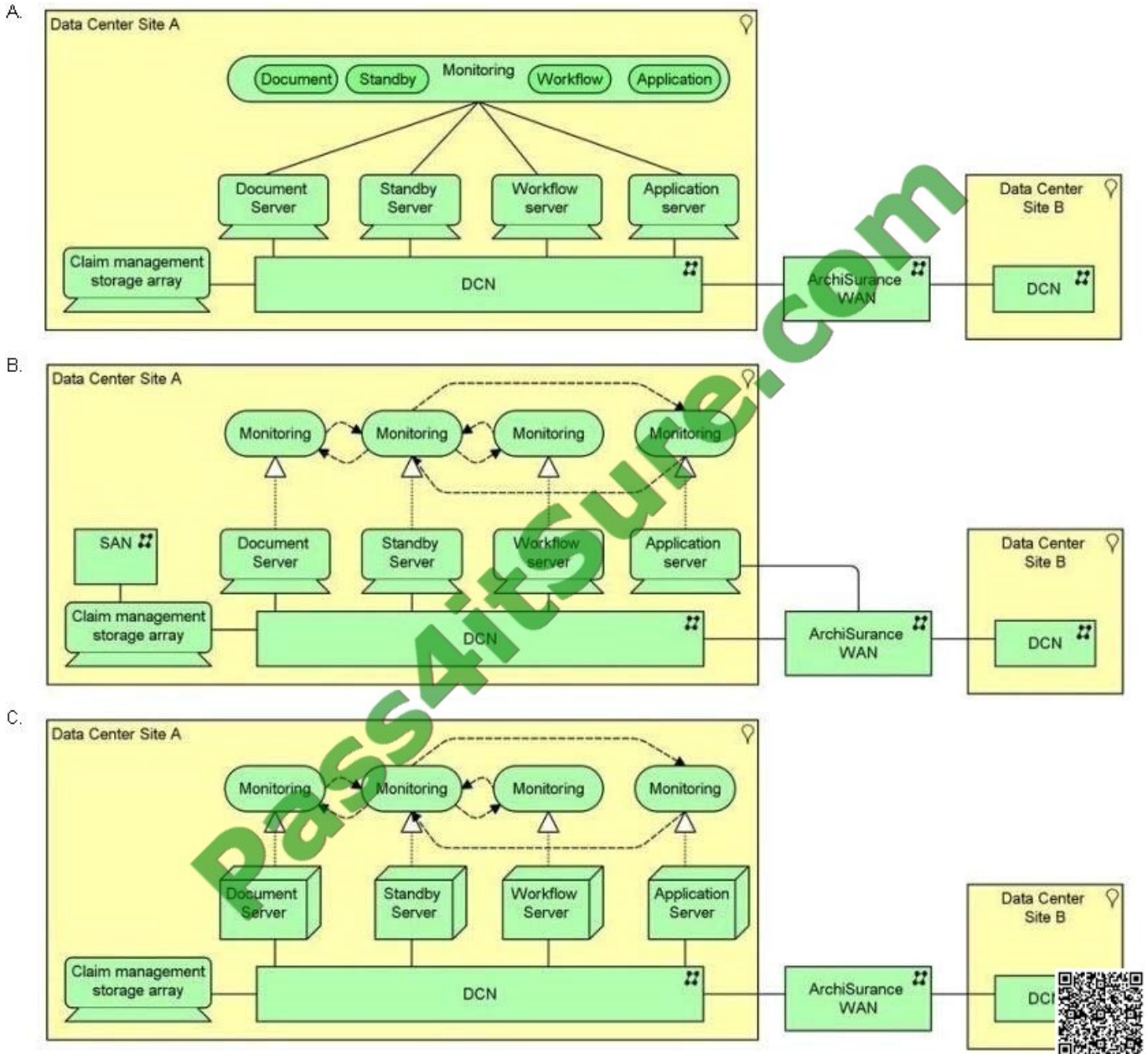
The ArchiSurance enterprise document management infrastructure provides critical support for myriad types of documents and document-based transactions, many of which are executed in high volume each day. At the core of the infrastructure is the document management systems software, which has three major modules: a document engine that stores, retrieves and performs a variety of operations on documents, a workflow engine that hosts document management applications, and an application engine, which hosts the most sophisticated applications. The application engine invokes the document and workflow engines as necessary when hosting application components that require their services.

The claim management application component is critical to ArchiSurance business operations. It is hosted by the application engine, and launches whenever an individual files a new claim. The claim management component requires different documents to demonstrate proof of loss depending on the type of claim filed, the type of insurance that is in force, and various other circumstances. When the correct documents are filed and verified by an intake operator, proof of loss is complete, and the claim management component assigns the claim to a claim analyst by reading and updating analyst status data and applying business rules stored as data. Due to its business-critical nature, the document management solution is hosted redundantly at two geographically separate data center sites known as Site A and Site B. Both sites provide identical infrastructure. Each site contains a highly available data center network (DCN) that is connected to the highly available ArchiSurance wide area network (WAN). Each claim management server is connected to its site DCN, and each DCN is a converged network that connects both servers and storage arrays, including a physical storage array dedicated to the claim management application. Each site contains four high-powered separate physical servers rules stored as data. Due to its business-critical nature, the document management solution is hosted redundantly at two geographically separate data center sites known as Site A and Site B. Both sites provide identical infrastructure. Each site contains a highly available data center network (DCN) that is connected to the highly available ArchiSurance wide area network (WAN). Each claim management server is connected to its site DCN, and each DCN is a converged network that connects both servers and storage arrays, including a physical storage array dedicated to the claim management application. Each site contains four high-powered separate physical servers dedicated to the claim management application. At any one time, one server is on standby while the other three servers are, respectively, hosting the document, workflow and application engines. Each active server provides a monitoring service that is in constant two-way communication with the monitoring service on the standby server. If a server fails, the surviving monitoring services perform a failover sequence to assume failed server's workload if it was active. The surviving monitoring services also alert the operations team on duty.

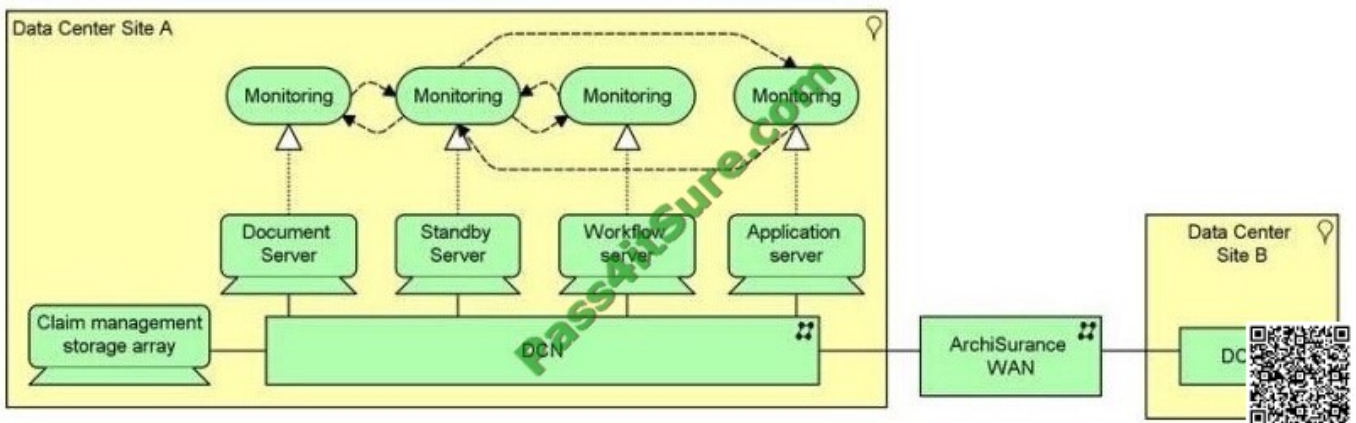
Refer to the Scenario

A new IT manager has asked you to model the infrastructure hardware and networks that supports document management, including the data center sites, servers, storage, and networks as well as the services necessary for automated failover within a server cluster. Since the two data centers provide identical document management infrastructure, for Site B it is only necessary to show the associated networking.

Which is the best answer?



A. B. C.





D.

Correct Answer: D

---

#### QUESTION 4

##### Scenario

Please read this scenario prior to answering the question

The ArchiSuranceTo Go mobile consumer solution is increasingly important to ArchiSurance, which uses it to sell and renew insurance products, provide customer service, enable accurate and convenient home recordkeeping, and capture and process claims. The solution consists of three components. The Consultant lets customers review their existing coverage, and update it based on common life events, such as getting a new car, moving into a new home, or having a family member move in or out. If necessary, they can speak or chat with a customer service representative. The Home Manager helps customers photograph and catalogue their valuable possessions in order to support the filing of accurate claims in case of loss or damage. The Claim Manager enables customers to quickly file a claim for loss or damage to an insured auto, home or possession. It enables customers to describe the incident by referencing information captured with the Consultant and the Home Manager applications. In addition, it allows the customer to add photographs, audio, video and text to support a claim, submit the claim, and monitor its progress.

The ArchiSuranceTo Go components rely on a number of application services hosted by ArchiSurance. The first is an Auto Identification and Description (AID) service that the Consultant uses to validate and complete auto information entered by customers. The second service, Home Identification and Description (HID) performs the same function for home information, and is used by the Home Manager. The Consultant also uses the Virtual Agent service to guide customers as they select coverage options, the Payment Processor service to arrange premium payments, and the Coverage Activator service to generate policies and put them in force.

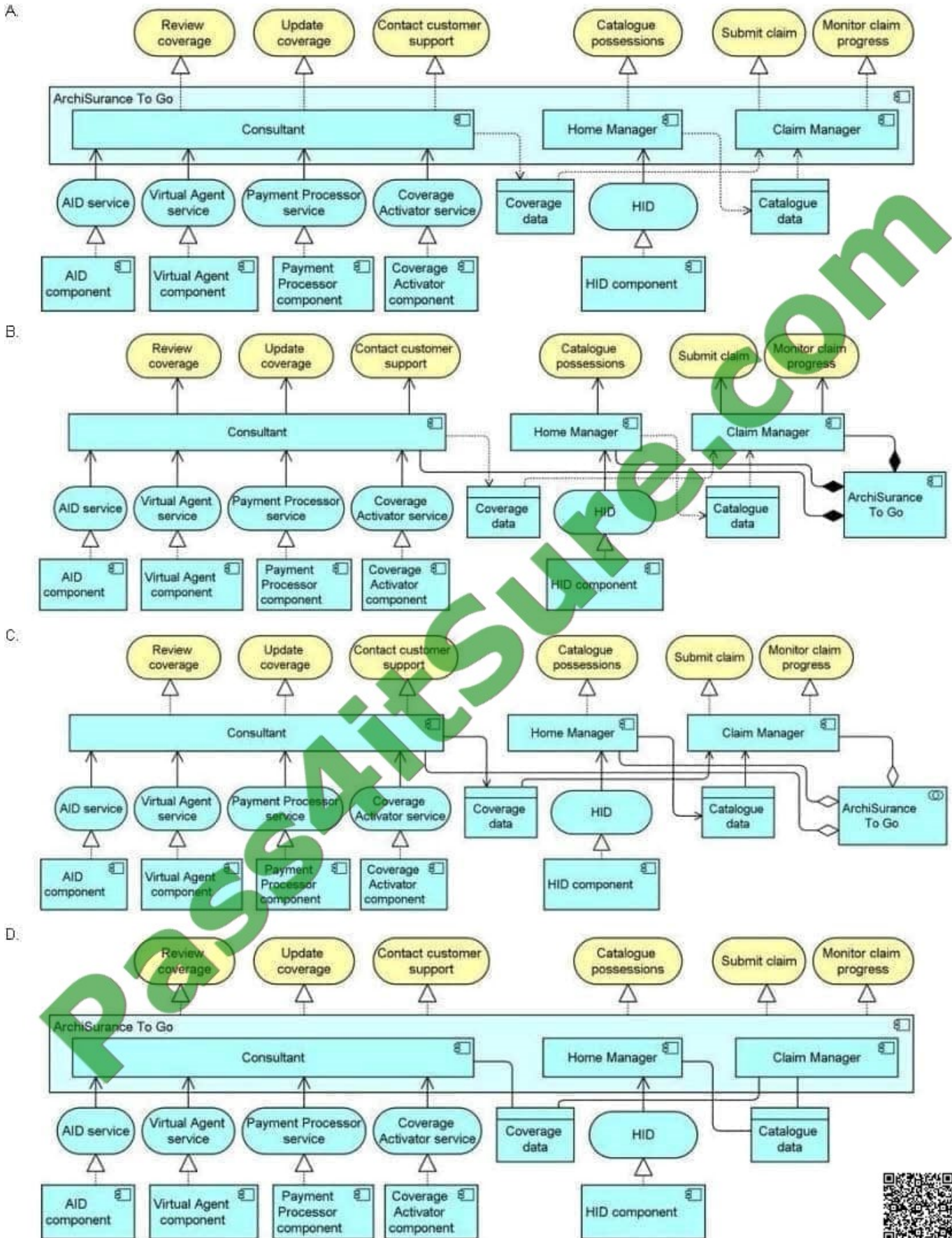
ArchiSurance to Go also relies on a number of infrastructure services. The Home Manager uses a Multimedia Repository service to store and retrieve information about insured homes. The Claim Manager also uses this service for claim information entered by customers. All three components of ArchiSuranceTo Go use a Personal Security service to register and authenticate customers, and to manage their profiles.

Each application service is realized by an application component with the same name. Also, each infrastructure service is realized by a system software environment with the same name. ArchiSurance hosts both the application components and system software environments in a virtualized server pool within its data center. Each service has its own virtual server. Each server is connected to a data center network (DCN) which in turn connects to a commercial wide area network (WAN).

Refer to the Scenario

The marketing department would like a better understanding of the business services that ArchiSuranceTo Go delivers, and the application services and components that are used to deliver those business services. The marketing department would also like to understand the data accessed directly by the interactive application components.

Which answer provides the best explanation?





A. B. C. D.

Correct Answer: A

#### QUESTION 5

Which concept from the Motivation extension is most appropriate to represent a concern of one or more stakeholders?

A. Assessment

B. Driver

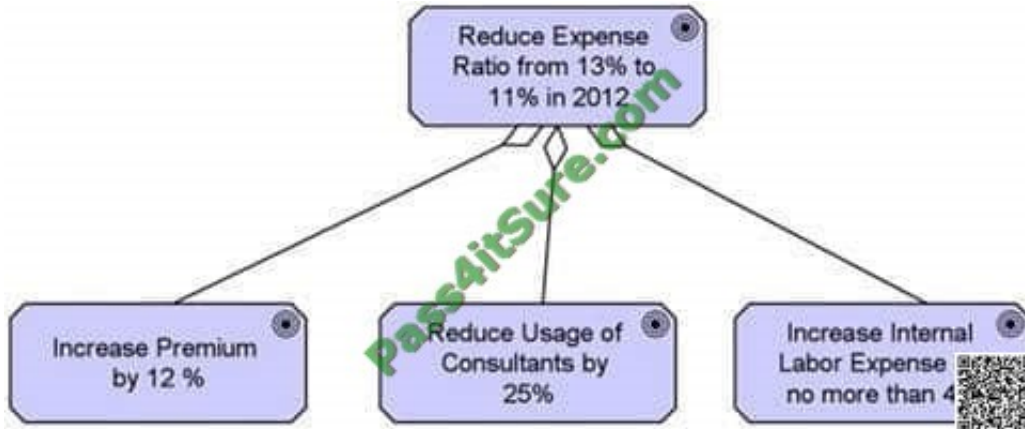
C. Requirement

D. Goal

Correct Answer: B

#### QUESTION 6

Consider the following diagram:



Which answer most accurately interprets what the diagram indicates about the goal "Reduce Expense Ratio from 13% to 11% in 2012"?

A. The goal is decomposed into three other goals

B. The goal is similar to the three other goals

C. The goal must be achieved before any of the other three goals is achieved

D. The goal will be achieved if at least one of the other three goals is achieved in 2012

Correct Answer: A

**QUESTION 7**

Which ArchiMate concept describes the behavior of a business collaboration?

- A. A business interaction
- B. A business event
- C. A business process
- D. A business service

Correct Answer: A

---

**QUESTION 8**

Scenario

Please read this scenario prior to answering the question ArchiSurance senior management; board members, customers and major stockholders have long been concerned about disaster resiliency in light of the company's heavy reliance on

a single data center. The data center is located in an area that is prone to flooding and earthquakes, according to expert assessments done by consultants retained for this purpose. In addition, the data center is located under a busy cafeteria,

and water occasionally leaks through its ceiling.

To address these problems, ArchiSurance has developed a plan to move from its current data center to a pair of ready-to-use data centers in separate cities. The data center move is designed to reduce the risk of business interruption,

reduce both planned and unplanned downtime for critical applications, and reassure ArchiSurance stakeholders. However, a number of limitations make the planned transition to the new data centers particularly challenging. A number of

critical ArchiSurance applications cannot be offline for more than an hour, and any downtime for these application must only occur in certain four-hour windows each weekend. Also, the move cannot occur during quarterly or year-end closing

periods in order to avoid interrupting critical processing. Fulfillment of these specific type of requirements will reduce the risk of business interruption from the data center move activities themselves.

ArchiSurance management has therefore planned a multi-phase data center transformation program. All of the activities in each phase are necessary to ensure a progression of stable and fully functional data center configurations. The first

phase consists of detailed scheduling and planning to produce a comprehensive transformation plan that meets ArchiSurance timing and scheduling requirements. During the second phase, ArchiSurance is to contract for the hardware and

software required for the new datacenters, as well for refunds for the hardware and software to be returned from the current data center once it is shut down. During the third phase, the new data centers are to be set up, and the new

hardware and software are to be tested in parallel with what is already in production. The actual transition between the old and new data centers occurs in the fourth phase, and the fifth phase involves shutting down and dismantling the old





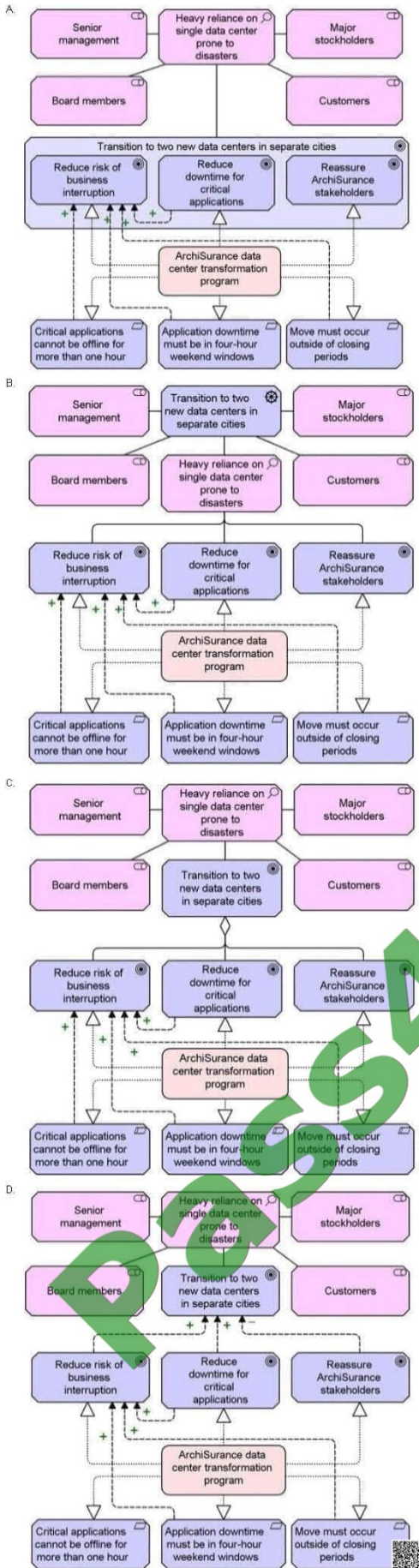
data center, and returning its hardware and software for contracted refunds. Phases two through five are each to be initiated when specific conditions are met in the previous phase.

Refer to the Scenario

The head of IT has asked you to help her explain why ArchiSurance decided to transform its data center infrastructure. You must model the stakeholders, the motivations, and the influencing relationships between these motivations. You must

also model the specific goals realized by the data center transformation program and the limitations within which this program must operate.

Which answer provides the best explanation?



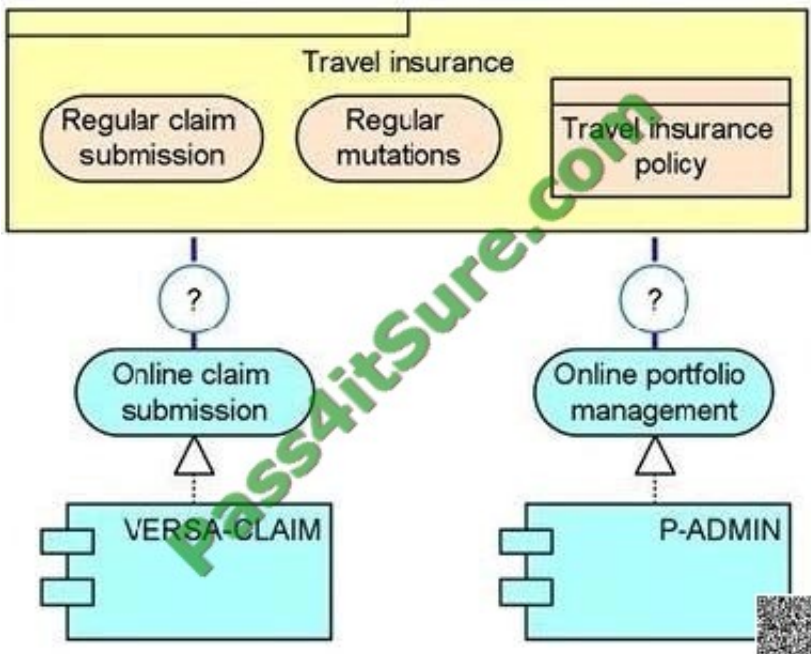


A. B. C. D.

Correct Answer: A

### QUESTION 9

A travel insurance product offers a combination of non-automated and automated services to customers, as shown in the following diagram.



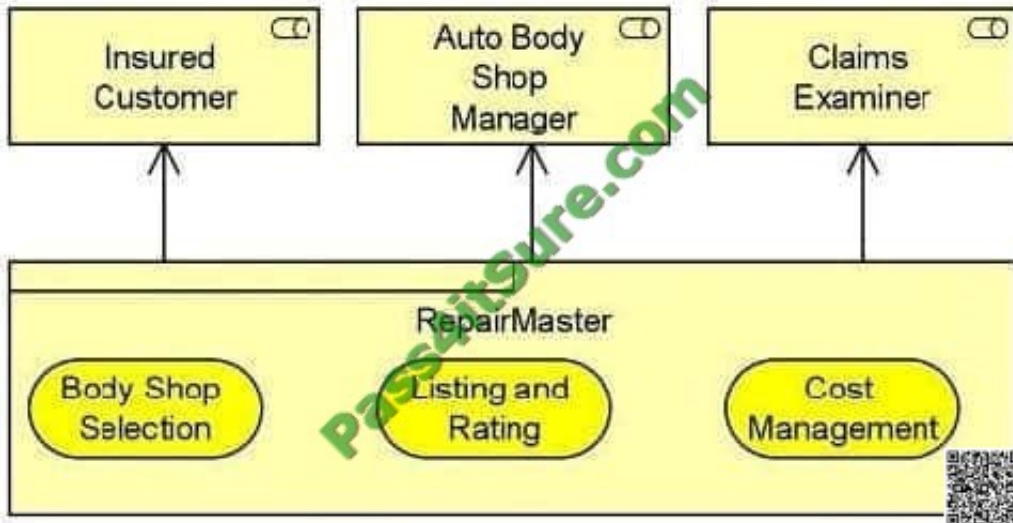
Which of the following is the correct relationship to be used between the product and the application services?

- A. Product aggregates Application Services
- B. Application Services aggregate Product
- C. Product realizes Application Services
- D. Application Services realize Product

Correct Answer: A

### QUESTION 10

The PRO-FIT division of ArchiSurance has a new offering that is described by the following diagram:



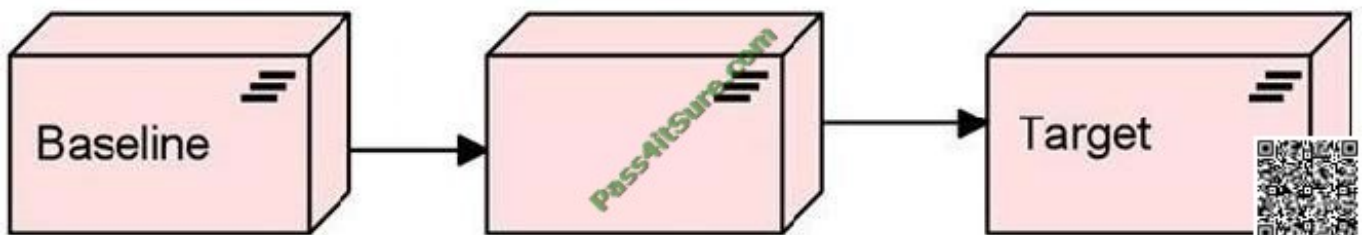
Which of the following statements most accurately interprets this diagram?

- A. RepairMaster is a business product that includes three services and is used by three different roles
- B. RepairMaster is a business service that includes three products and is used by three different business actors
- C. RepairMaster is a business object that holds information about three different services, and is accessed by three different roles
- D. RepairMaster is a business product that delivers three different kinds of value to the three different roles that use it

Correct Answer: A

#### QUESTION 11

Consider the following diagram, which represents a migration from a Baseline to a Target Architecture:



Which of the following answers best interprets the unlabeled symbol in the middle of the diagram?

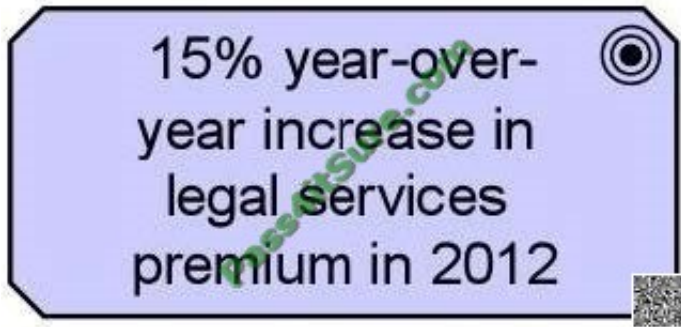
- A. It represents a relatively stable intermediate state during the migration from the Baseline to the Target Architectures
- B. It represents a project that progresses the architecture from Baseline to Target
- C. It represents the deliverables necessary to transform the architecture from Baseline to Target
- D. It represents a conceptual point of transition between the two architectures, but one that is unlikely to exist in reality for more than an instant



Correct Answer: A

### QUESTION 12

Consider the following symbol, which represents information about a transformation project at ArchiSurance. Note that premium in this context means the total revenue ArchiSurance receives from legal services insurance premium payments:



Which of the following statements correctly expresses the meaning of the symbol?

- A. ArchiSurance has attributed a 15% increase in premium to the transformation project in 2012
- B. The increased premium revenue created by completion of the transformation project will motivate significant change in the ArchiSurance Legally Yours division
- C. ArchiSurance has set a goal to increase legal services premium by 15% in 2012, as compared to the previous year
- D. ArchiSurance has a requirement to increase legal services premium by 15% in 2012

Correct Answer: C

[Latest OG0-023 Dumps](#)

[OG0-023 Practice Test](#)

[OG0-023 Exam Questions](#)



To Read the [Whole Q&As](#), please purchase the [Complete Version](#) from [Our website](#).

## Try our product !

100% Guaranteed Success

100% Money Back Guarantee

365 Days Free Update

Instant Download After Purchase

24x7 Customer Support

Average 99.9% Success Rate

More than 800,000 Satisfied Customers Worldwide

Multi-Platform capabilities - [Windows](#), [Mac](#), [Android](#), [iPhone](#), [iPod](#), [iPad](#), [Kindle](#)

We provide exam PDF and VCE of Cisco, Microsoft, IBM, CompTIA, Oracle and other IT Certifications. You can view Vendor list of All Certification Exams offered:

<https://www.pass4itsure.com/allproducts>

## Need Help

Please provide as much detail as possible so we can best assist you.

To update a previously submitted ticket:



 <p><b>One Year Free Update</b> Free update is available within One Year after your purchase. After One Year, you will get 50% discounts for updating. And we are proud to boast a 24/7 efficient Customer Support system via Email.</p>	 <p><b>Money Back Guarantee</b> To ensure that you are spending on quality products, we provide 100% money back guarantee for 30 days from the date of purchase.</p>	 <p><b>Security &amp; Privacy</b> We respect customer privacy. We use McAfee's security service to provide you with utmost security for your personal information &amp; peace of mind.</p>
---	---	--

Any charges made through this site will appear as Global Simulators Limited.

All trademarks are the property of their respective owners.

Copyright © pass4itsure, All Rights Reserved.