



OA0-002^{Q&As}

Android Application Engineer Certifications Basic

Pass Android OA0-002 Exam with 100% Guarantee

Free Download Real Questions & Answers **PDF** and **VCE** file from:

<https://www.pass4itsure.com/oa0-002.html>

100% Passing Guarantee
100% Money Back Assurance

Following Questions and Answers are all new published by Android
Official Exam Center

-  **Instant Download** After Purchase
-  **100% Money Back** Guarantee
-  **365 Days** Free Update
-  **800,000+** Satisfied Customers





QUESTION 1

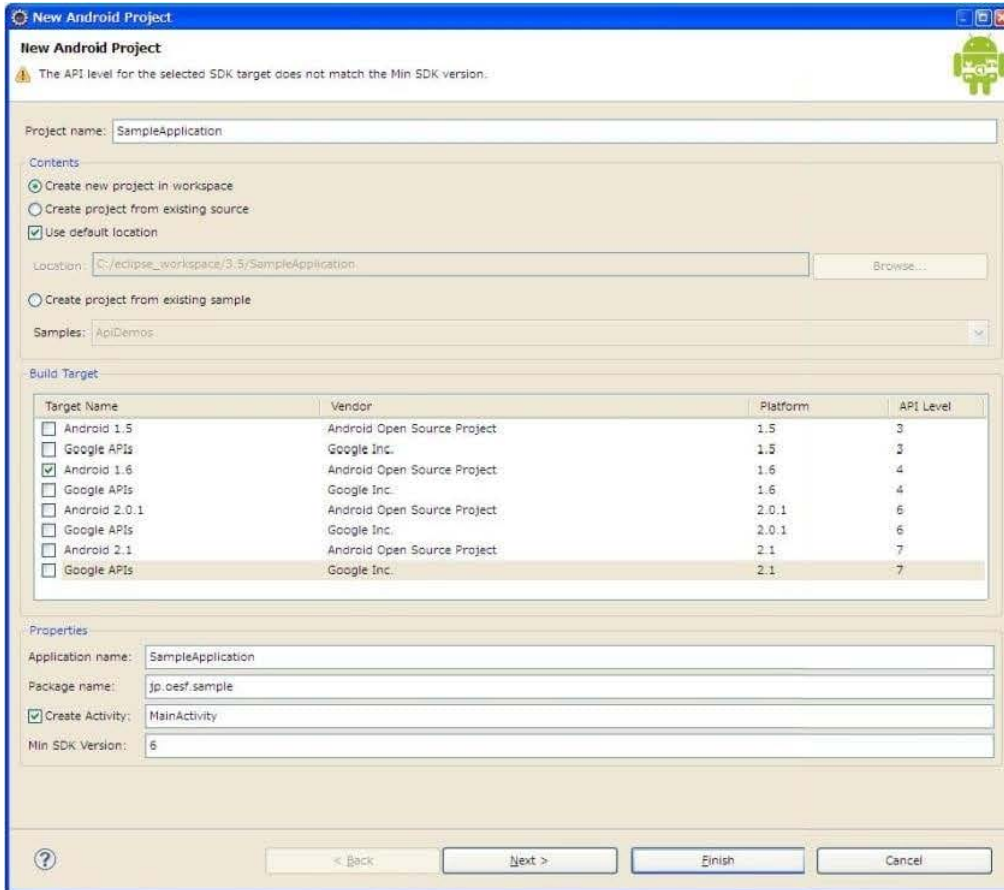
Which of these is the correct interface definition used to bind a Service?

- A. AIDL
- B. IDL
- C. KML
- D. XML

Correct Answer: A

QUESTION 2

When creating the following Android project, which is the correct combination of (1)~(3) to add to the AndroidManifest.xml?



AndroidManifest.xml

```

01: <?xml version="1.0" encoding="utf-8"?>
02: <manifest xmlns:android="http://schemas.android.com/apk/res/android"
03:           (1)
04:     android:versionCode="1"
05:     android:versionName="1.0">
06:   <application android:icon="@drawable/icon" android:label="@string/app_name">
07:     <activity (2)
08:       android:label="@string/app_name">
09:       <intent-filter>
10:         <action android:name="android.intent.action.MAIN" />
11:         <category android:name="android.intent.category.LAUNCHER" />
12:       </intent-filter>
13:     </activity>
14:   </application>
15:   (3)
16: </manifest>

```

- a. (1)package="jp.oesf.sample"
(2)android.name="jp.oesf.sample.MainActivity"
(3)<uses-sdk android.minSdkVersion="6"/>
- b. (1)package="jp.oesf.sample"
(2)android.name="MainActivity"
(3)<uses-sdk android.minSdkVersion="4"/>
- c. (1)package="jp.oesf.sample"
(2)android.name=" MainActivity"
(3)<uses-sdk android.minSdkVersion="6"/>
- d. (1)package="jp.oesf.sample"
(2)android.name="MainActivity"
(3)<uses-sdk android.minSdkVersion="6"/>



- A. Option a
- B. Option b
- C. Option c
- D. Option d

Correct Answer: C

QUESTION 3

Which of these is the incorrect explanation of the Android SDK and AVD Manager?

- A. They are provided from version 1.6 of the SDK. Up to Version 1.5, there was an AVD Manager but it lacked SDK management functions.
- B. You can create and startup AVD, and on startup you can delete user data up to that point.
- C. The "android" command can be used if "/tools" is added to the command path.
- D. The development tools that can be downloaded from Android SDK and AVD Manager are SDK- platform, NDK- platform, emulator images, and USB drivers for handsets.

Correct Answer: D

QUESTION 4

Which of these is the correct explanation of the Android license form?

- A. It is necessary to register with Android Market and pay a license fee in order to develop a paid- for application on Android.
- B. There is no special provision regarding application license operation on Android.
- C. If an application is developed using Android, it is not a licensing violation if the source code is not made public.
- D. Since Android uses libraries licensed in various ways such as GPL, BSD, and LGPL, applications developed under Android are subject to the severest license, GPL.

Correct Answer: C

QUESTION 5

Which is the tool provided by Android Development Tools Plugin to create and edit screens with Eclipse?

- A. Resource Editor
- B. Layout Editor
- C. Menu Editor



D. View Editor

Correct Answer: B

QUESTION 6

Which is the executable file format for the Dalvik VM?

- A. class file
- B. jar file
- C. dexfile
- D. srecfile

Correct Answer: C

QUESTION 7

Which of these is the incorrect explanation of ProgressDialog?

- A. ProgressDialog inherits from the AlertDialog class.
- B. ProgressDialog can be set as 2 types of style: STYLE_HORIZONTAL and STYLE_SPINNER.
- C. ProgressDialog is able to apply a custom XML-defined layout by using the setContentView(...) method.
- D. ProgressDialog can be freely configured to use a Drawable class to display as its progress bar.

Correct Answer: C

QUESTION 8

Which of these is the correct procedure to create and use an SQLite database?

- A. Call the ApplicationContext methods createDatabase() and openDatabase().
- B. Extend the android.database.sqlite.SQLiteOpenHelper class, implementing the onCreate() method and onUpgrade() methods, then call the getWritableDatabase() method.
- C. Declare an instance of the android.database.sqlite.SQLiteOpenHelper class and call each of the methods onCreate(), onUpgrade(), and getWritableDatabase().
- D. Implement the android.database.SQLiteOpenHelper interface, writing the implementation of the onCreate() and onUpgrade() methods, and pass it as a parameter to ApplicationContext.createOrOpenDatabase().

Correct Answer: B

**QUESTION 9**

The following code is a part of an Activity class to create a dialog. Which is the Activity class method used to display this dialog?

```
01: @Override
02: protected Dialog onCreateDialog(int id) {
03:     return new AlertDialog.Builder(this).setMessage("message").create();
04: }
```

- A. void createDialog();
- B. void createDialog(int id);
- C. void show();
- D. void showDialog(int id);

Correct Answer: C

QUESTION 10

Which of these is the incorrect explanation of signing an application?

- A. It is necessary to sign with the same certificate as for application update.
- B. It is necessary to configure the keystore file, including private key, for signing.
- C. Signing is required for installation of an application.
- D. It is required to use jarsigner for signing.

Correct Answer: D

QUESTION 11

Which class in the wifi package holds Wi-Fi network configurations, including the security configuration?

- A. ScanResult
- B. Wifi Configuration
- C. WifiInfo
- D. WifiManager

Correct Answer: B

QUESTION 12



Which of these is the correct explanation of the Android Debug Bridge (adb)?

- A. The adb client will not operate normally at startup if the adb server is not running.
- B. The adb server assigns even-numbered TCP ports to connect to the adb daemon.
- C. The adb server binds to TCP port 5037 to receive adb client communication.
- D. The adb server runs on emulators and on physical handsets.

Correct Answer: C

QUESTION 13

Which of these is the incorrect explanation of Android?

- A. Android is a platform for mobile devices including cellular phones.
- B. Android is released as open-source by Google.
- C. Applications which operate on Android can be developed using Java.
- D. Android provides a standard API for control not only of 3G, Wi-Fi, and GPS but several sensors such as an accelerometer or compass.

Correct Answer: B

QUESTION 14

Which of these is the incorrect folder as a folder that is created automatically after completion of the Android Development Tools Plugin New Project Wizard?

- A. dat
- B. gen
- C. res
- D. src

Correct Answer: A

QUESTION 15

Which of these is the correct processing necessary for data update notification at the time of creating an individual ContentProvider and using it?

- A. In the update method of the ContentProvider class, notify by calling the ContentResolver.setNotificationUri method.
- B. In the update method of ContentProvider class, notify by calling the Cursor.notifyChange method.



C. In the update method of ContentProvider class, notify by calling the ContentResolver.notifyChange method.

D. In the update method of the ContentProvider class, notify by calling the Cursor.setNotificationUri method.

Correct Answer: C

[Latest OA0-002 Dumps](#)

[OA0-002 VCE Dumps](#)

[OA0-002 Braindumps](#)