

100% Money Back Guarantee

Vendor: IBM

Exam Code: IBMSPPSSMPRO

Exam Name: IBM® SPSS® Modeler Professional Certification

Version: Demo

QUESTION: 1

Which key items must be identified before a data mining project is started? (Select all that apply)

- A. A business problem or question
- B. Data quality problem
- C. Available data
- D. Available expertise on the data and business

Answer: A, B

QUESTION: 2

Given the following Output Table to create a select node which includes vehicles from both groups A and B, click on A and on B (as shown) and select from the menu.

Vehicle age	Vehicle group	Vehicle age	Average cost of claims	Number of claims
17-20	A	0-3	220	8
17-20	A	4-7	202	8
17-20	A	8-9	133	4
17-20	A	10+	160	1
17-20	B	0-3	272	10
17-20	B	4-7	249	28
17-20	B	8-9	280	1
17-20	B	10+	11	1
17-20	C	0-3	189	9
17-20	C	4-7	288	13
17-20	C	8-9	179	1
17-20	C	10+	\$=0\$	6
17-20	D	0-2	263	3
17-20	D	4-7	860	2
17-20	D	8-9	\$=0\$	6
17-20	D	10+	\$=0\$	6
21-24	A	0-3	302	18
21-24	A	4-7	184	21
21-24	A	8-9	135	10
21-24	A	10+	180	4

- A. Generate ... Select Node ("Or")
- B. Generate ... Select Node ("And")

Answer: B

QUESTION: 3

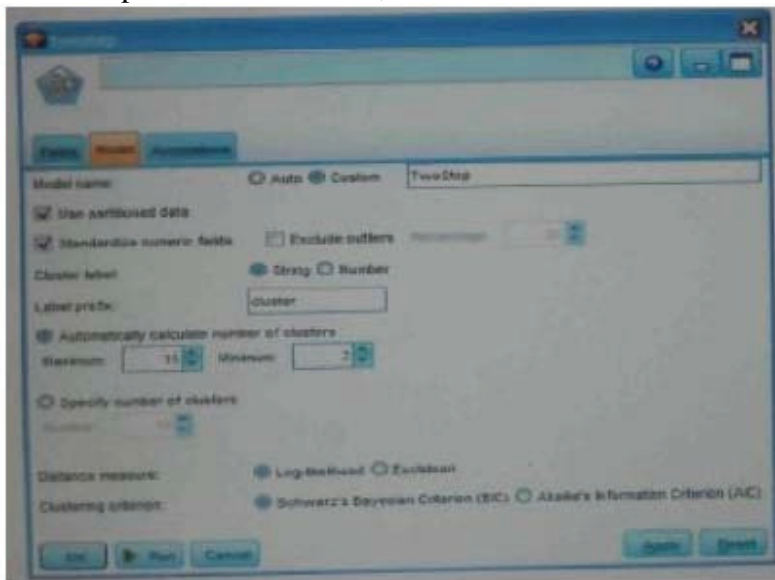
Which nodes are best suited for revealing relationship between categorical (nominal, ordinal) fields? (Select all that apply)

- A. Means node
- B. Matrix node
- C. Distribution node
- D. Table node

Answer: A, C

QUESTION: 4

In two step node shown below, what does standardize numeric fields mean?

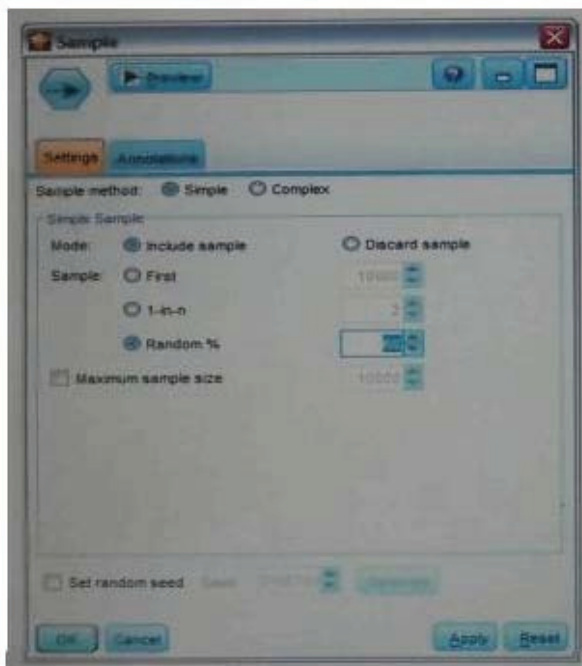


- A. Eliminate outliers to improve results.
- B. Transform the numeric fields to a scale with a mean of zero and variance of one.
- C. Limit the number of created clusters.
- D. Use only the numeric fields scale.

Answer: B

QUESTION: 5

Which statement is correct regarding the sample node dialogue shown below?



- A. It will select every 60th record from the data.
- B. It will randomly select exactly 60% of all the record.
- C. It will select approximately 60% of the records. This is, each record will have a 60% probability of being selected.
- D. It will always draw the same 60% of records each time this sample node is run.

Answer: C

QUESTION: 6

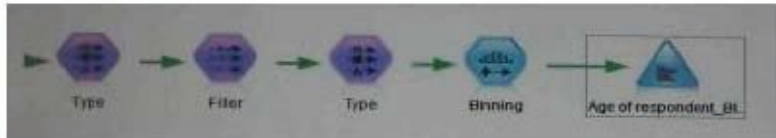
Which statements are true of the Feature Selection node? (Select all that apply)

- A. Input fields can be selected on the basis of importance.
- B. The Target fields can be either categorical or continuous measurement.
- C. The Input fields can only be continuous measurement.
- D. When a target field is not specified then it will create a generalized output.

Answer: A, B

QUESTION: 7

What is the reason that the three nodes in the following figure have been colored purple?



- A. The purple nodes were pushed back to the database.
- B. IBM SPSS Modeler is running out of memory.
- C. The purple nodes will be executed later.
- D. There are multiple type nodes in a row.

Answer: A

QUESTION: 8

On the PCA/Factor node when doing a Principle Component analysis without rotation, the values reported on the Component Matrix represents the correlation between each field and factor.

- A. True
- B. False

Answer: B

QUESTION: 9

As a default, the Evaluation node provides a graph of the first category of your target field. To change the category, you need to modify which sector?



- A. User defined hit
- B. User defined score
- C. Include business rule
- D. Export results to file

Answer: A

QUESTION: 10

Which Model nodes can have a categorical target field? (Select all that apply)

- A. Discriminant node
- B. Linear node
- C. Neutral Net node
- D. C & R Tree node

Answer: A, B

QUESTION: 11

In a derive node, which expressions will produce a continuous data type rather than a string?
(Select all that apply)

- A. "2001-04-23"
- B. To_date("12/01/2050")
- C. "03/15/2009"
- D. Datetime_date(2008.05.22)

Answer: B

QUESTION: 12

Which mode is not available In the Auto Numeric node?

- A. Chaid
- B. Logistic
- C. Neural Net
- D. Regression

Answer: C

QUESTION: 13

When using the algorithm method to replace missing values in data audit output, which algorithm is used?

- A. Neural Net
- B. C5.0
- C. C & RT
- D. Cox Regression

Answer: C

QUESTION: 14

Which of the following is not a part of Business Understanding phase of the CRISP-DM (Cross industry Standard Process for Data Mining) Methodology?

- A. Determining Business Objectives
- B. Determining Data Mining Goals
- C. Initial Data Collection
- D. Producing a project Plan

Answer: D

QUESTION: 15

To score new data using an existing model, the user must:

- A. Change the data source and develop a new model for that data.
- B. Not change the data source and develop a new model for that data.
- C. Change the data source and rename the fields as needed to match the names of the in original file.
- D. Change the data source and rename the fields so they do not match the names of the fields in original file.

Answer: B

QUESTION: 16

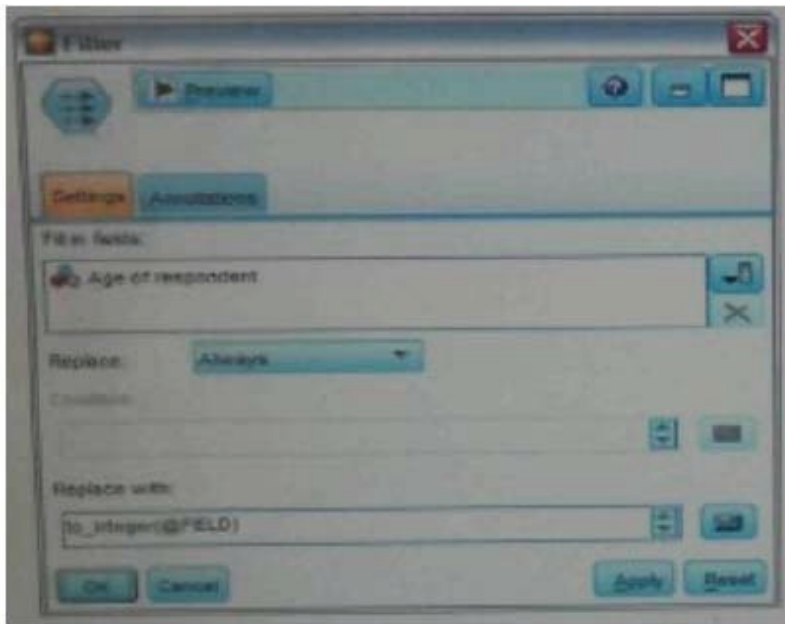
What is the function of the Ensemble node?

- A. Combining models together to produce higher accuracy
- B. The development of additional fields to improve accuracy
- C. Transferring the existing values to improve accuracy
- D. None of the above

Answer: A

QUESTION: 17

Consider the Filer node where age of respondent is stored as a string. What operations will the replace with: expression accomplish?



- A. Converts numeric values to integers and leaves the non-numeric as is.
- B. Converts numeric values to integers and converts non-numeric values to \$null\$ value.
- C. The expression is not a valid operation.
- D. Users @ FIELD to create a new field.

Answer: B

QUESTION: 18

Examine the Matrix table shown below which relates the field churn (whether a customer will churn) to age cat (age groups).

agecat		No	Yes
18-24	Count	359	263
	Row %	57.717	42.283
25-34	Count	357	336
	Row %	52.374	47.626
35-49	Count	875	347
	Row %	71.504	28.496
50-64	Count	990	205
	Row %	82.845	17.155
≥65	Count	953	115
	Row %	89.232	10.768

Cells contain: crosstabulation of fields (including missing ...)
Chi-square = 334.026, df = 4, probability = 0

Based on the table, which statements are accurate? (Select all that apply)

- A. 42.283% of the 18-24 year old will churn.
- B. 1.768% of those that churn are over 65 years of age.
- C. Older age groups are less likely to churn than the younger ages.
- D. Measured by Chi-square is a weak relationship.

Answer: A

QUESTION: 19

In IBM SPSS Modeler modeling nodes, the option to build split models refers to building a separate model for each possible value of input fields that are defined as split role.

- A. True
- B. False

Answer: B

QUESTION: 20

Generally speaking, to modify values in columns of working data file, you would use nodes from which palette or menu group?

- A. Record Ops

- B. Field Ops
- C. Export
- D. Sources

Answer: B

QUESTION: 21

Which stage of the CRISP-DM (Cross Standard Process for Data Mining) methodology is the most time consuming?

- A. Business Understanding
- B. Data Preparation
- C. Modeling
- D. Evaluation

Answer: B

QUESTION: 22

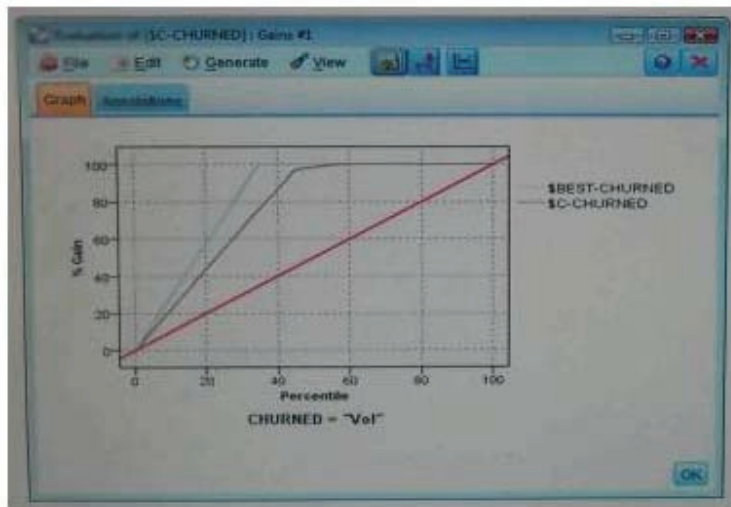
Assume that you have the field A, B, C, and D and you wish to find the sum of values even if there are \$null\$ missing values in one or more fields. Which expression would accomplish this task?

- A. sum_n(A B C D)}
- B. A+B+C+D
- C. sum_n([A, B, C, D])
- D. to_real (A)+ to_real (B)+ to_real (C)+ to_real (D)

Answer: C

QUESTION: 23

In the Gains Chart displayed below, what does the \$BEST-CHURNED\$ line represent?



- A. The best current model to predict the field CHURNED
- B. The theoretically best model to predict the field CHUREND
- C. The best model for cases in the training partition to predict the field CHURNED
- D. None of the above

Answer: C

QUESTION: 24

Assume you have a data file which has the first and last name (Called FIRST_NAME and LAST_NAME respectively). You would use a Derive node to create a field named FULL_NAME containing values with first name, space, last name. Which expression would produce the correct result?

- A. FIRST_NAME << LAST_NAME
- B. FIRST_NAME << ** << LAST_NAME
- C. FIRST_NAME ** ++ ** LAST_NAME
- D. FIRST_NAME + ** + LAST_NAME

Answer: C

QUESTION: 25

Which statement accurately describes the function of the Coerce data check setting Type node?

- A. Checks all fields for values outside the specified range and reports unspecified values.
- B. Checks fully instantiated fields for values outside the specified range and converts unspecified values to legal values.
- C. Checks fully instantiated fields for values outside the specified range and reports unspecified values.
- D. None of the above is accurate.

Answer: A

QUESTION: 26

Which values are available as Field Roles? (Select all that apply)

- A. Input
- B. Target
- C. Normal
- D. Partition

Answer: A, B

QUESTION: 27

Summary statistics, such as mean, minimum, maximum, and standard deviation, are available in which of following nodes? (Select all that apply)

- A. Sample node
- B. Table node
- C. Statistics node
- D. Data Audit node

Answer: A, B, C, D

QUESTION: 28

A histogram chart is used to graph fields of which measurement type?

- A. Continuous
- B. Flag
- C. Nominal
- D. Ordinal

Answer: A

QUESTION: 29

Which Source node would you use to read text from a free field (delimited) text file?

- A. Fixed File node
- B. Var. File node
- C. Data Collection node
- D. Enterprise View node

Answer: B

QUESTION: 30

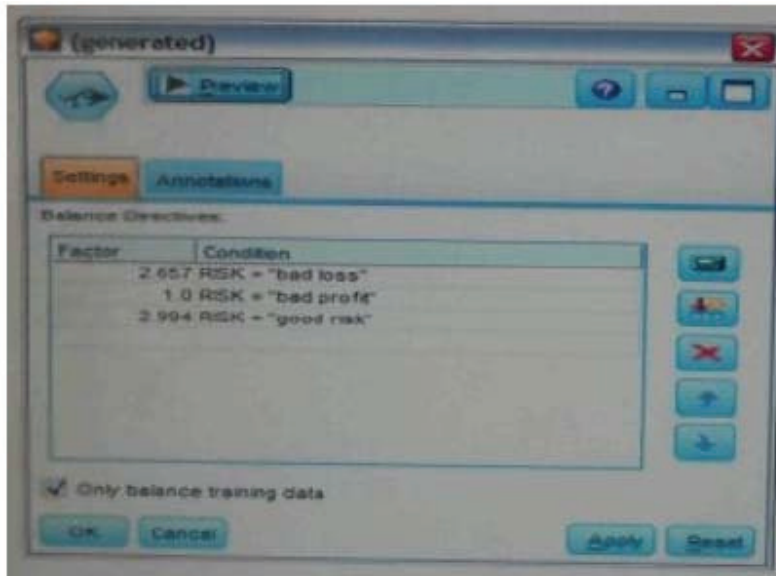
The Feature Selection node is used for what reasons? (Select all that apply)

- A. Screens input fields for problems such as missing data.
- B. Selects the best fitting model
- C. Selects the best input fields for model.
- D. Ranks the model by importance.

Answer: A, D

QUESTION: 31

Which statement is correct regarding the Balance node shown below?

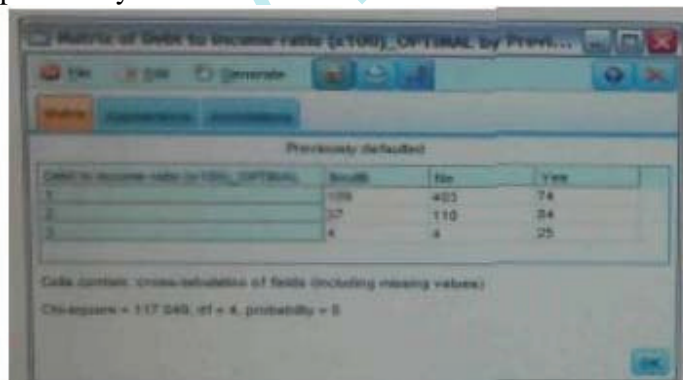


- A. The sizes of the larger two groups will be reduced to equal the size of smallest group.
- B. The "bad profit" category is the smallest group.
- C. The sizes of the first and third groups will be increased.
- D. The result group sizes will always be the same each time the Balance node is run.

Answer: B

QUESTION: 32

After the binning node and Optimal binning on debt to income ratio Previously defaulted as the Supervisor field, we observe in matrix the following relationship between the behind field and previously defaulted.



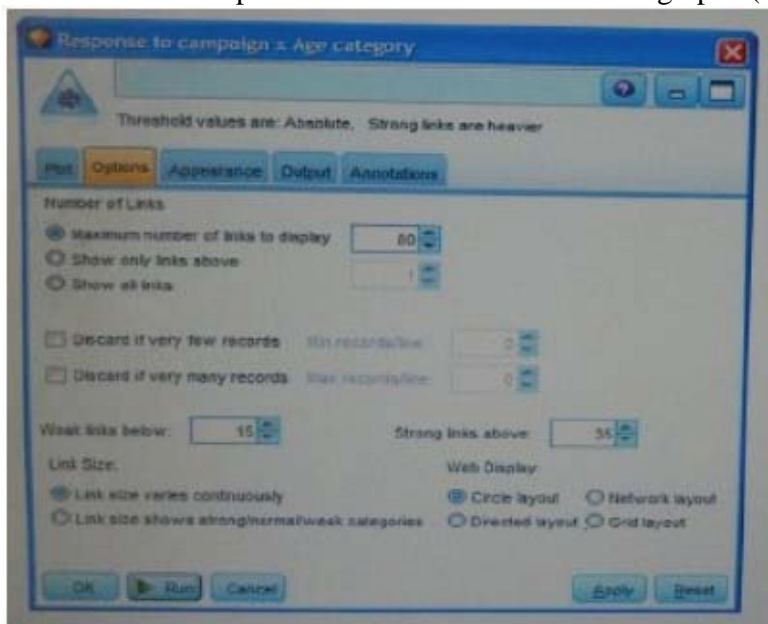
This relationship exists because optimal binning attempts to create bins so the relationship between the Supervisor field and the banned field as maximized.

- A. True
- B. False

Answer: A

QUESTION: 33

Which web node options will remove lines from the graph? (Select all that apply)



- A. Increase the Maximum number of links to display.
- B. Decrease the Max records/line
- C. Increase the Min records/line

Answer: B

QUESTION: 34

Business objectives are the origin of every data mining solution.

- A. True

B. False

Answer: A

QUESTION: 35

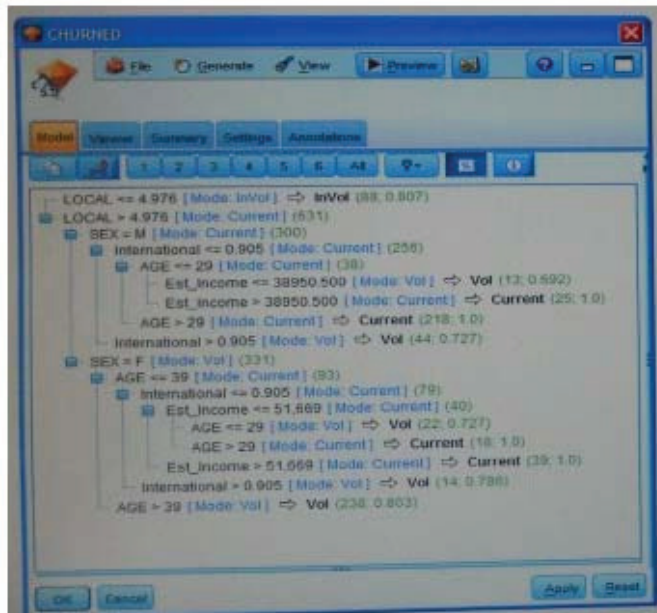
Fields of which measurement type is best suited for a Distribution node? (Select all that apply)

- A. Continuous
- B. Flag
- C. Nominal
- D. Typeless

Answer: B, D

QUESTION: 36

Which statement is correct interpretation of the rule, “those that use less than or equal to 4.976 of LOCAL are predicted to be inVol ”?



- A. The rule applies to 88 people and the confidence is 80.7%.
- B. This rule was accurate 88 times which was 80.7% of the time.

- C. This rule does not exist.
- D. The accuracy of this cannot be determined

Answer: B

QUESTION: 37

Assume you have two data files: a personnel file with information about employees and a second file with information about performance categories. You will use IBM SPSS Modeler to merge the files together using performance category as the key. However, there are inconsistencies in the category keys used in both in the personnel file and the performance file. In order to merge the files together without losing information from either the personnel file or the performance category file, you would use:

- A. A full outer join
- B. An inner join
- C. A partial outer join
- D. An anti-join

Answer: A

QUESTION: 38

Suppose you wanted to select only the records with complete data on all the fields for analysis and generate a Select node to perform that operation. Which other node should you use to generate the Select node?

- A. Derive node
- B. Filler node
- C. Data Audit node
- D. Filter node

Answer: C

To Read the [Whole Q&As](#), please purchase the [Complete Version](#) from [Our website](#).

Trying our product !


- ★ **100%** Guaranteed Success
- ★ **100%** Money Back Guarantee
- ★ **365 Days** Free Update
- ★ **Instant Download** After Purchase
- ★ **24x7** Customer Support
- ★ Average **99.9%** Success Rate
- ★ More than **69,000** Satisfied Customers Worldwide
- ★ Multi-Platform capabilities - **Windows, Mac, Android, iPhone, iPod, iPad, Kindle**

Need Help

Please provide as much detail as possible so we can best assist you.

To update a previously submitted ticket:



 One Year Free Update <p>Free update is available within One Year after your purchase. After One Year, you will get 50% discounts for updating. And we are proud to boast a 24/7 efficient Customer Support system via Email.</p>	 Money Back Guarantee <p>To ensure that you are spending on quality products, we provide 100% money back guarantee for 30 days from the date of purchase.</p>	 Security & Privacy <p>We respect customer privacy. We use McAfee's security service to provide you with utmost security for your personal information & peace of mind.</p>
---	---	--

Guarantee & Policy | Privacy & Policy | Terms & Conditions

Any charges made through this site will appear as Global Simulators Limited.

All trademarks are the property of their respective owners.