



EX0-113^{Q&As}

TMap Next Foundation

Pass EXIN EX0-113 Exam with 100% Guarantee

Free Download Real Questions & Answers **PDF** and **VCE** file from:

<https://www.pass4itsure.com/ex0-113.html>

100% Passing Guarantee
100% Money Back Assurance

Following Questions and Answers are all new published by EXIN
Official Exam Center

-  **Instant Download** After Purchase
-  **100% Money Back** Guarantee
-  **365 Days** Free Update
-  **800,000+** Satisfied Customers





QUESTION 1

Is the checklist drawn up for the purpose of the basis evaluation dependent on the test design technique being applied?

- A. Yes
- B. No

Correct Answer: A

QUESTION 2

Which test design technique uses operational profiles and load profiles?

- A. Data Cycle Test
- B. Process Cycle Test
- C. Real-Life Test
- D. Use Case Test

Correct Answer: C

QUESTION 3

Which activity takes place in the Preparation phase?

- A. the test object intake
- B. allocating test units and test techniques
- C. determining the test basis
- D. collection of the test basis

Correct Answer: D

QUESTION 4

When customer data is entered, it is mandatory to specify an e-mail address. Which test design technique can be used to test the above?

- A. Data Cycle Test
- B. Process Cycle Test
- C. Syntactic Test



Correct Answer: C

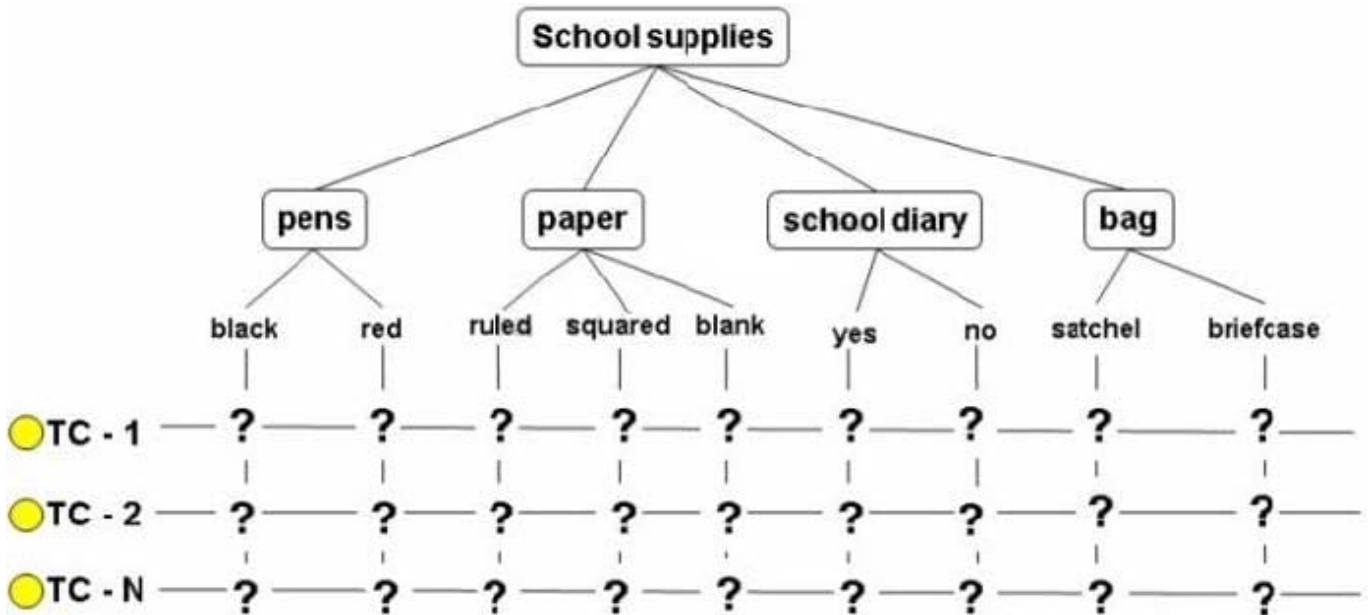
QUESTION 5

See the diagram below:

In order to test the purchase of school supplies, logical test cases must be created based on the data combination test. It has been agreed in this instance that a medium depth test is required. This means that all data must be subjected to pairwise testing:

Pens - paper - school diary - bag

The test cases are designed using the below classification tree.



What is the minimum number of test cases that will be generated by applying the pairwise testing technique? (What is "N" at a minimum?)

- A. 6
- B. 8
- C. 12
- D. 24

Correct Answer: A

QUESTION 6

The possible results of every condition are tested at least once. To which coverage type does this refer?



- A. condition coverage
- B. condition/decision coverage
- C. decision coverage
- D. modified condition/decision coverage

Correct Answer: A

QUESTION 7

With which units do you best start the unit integration test?

- A. the units that are ready first
- B. the units that are the worst (least) documented
- C. the units in which the most problems are expected

Correct Answer: C

QUESTION 8

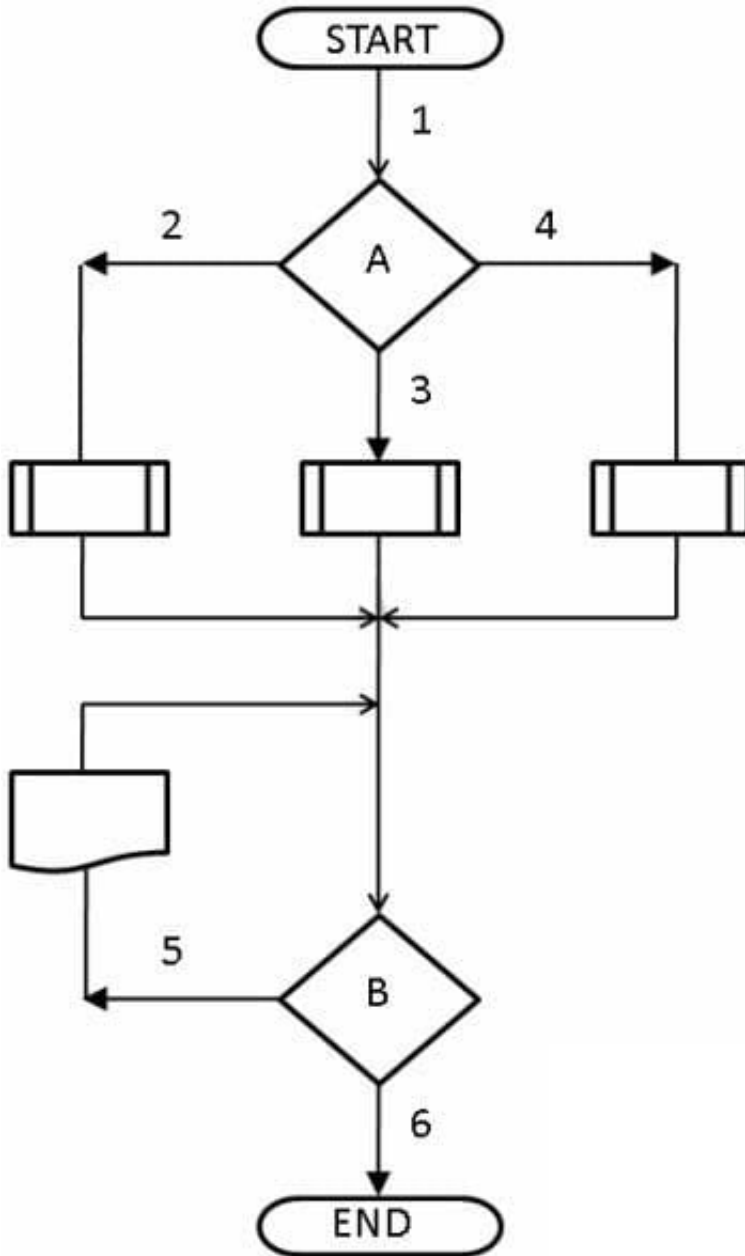
During which TMap phase is testing '\\dynamic implicit\\'?

- A. Specification
- B. Execution
- C. Preparation

Correct Answer: B

QUESTION 9

See the procedure flow below:



- A. 3
- B. 6
- C. 9
- D. 11

Correct Answer: D

QUESTION 10

Which test design technique can be used to test performance?



- A. Data Cycle Test
- B. Process Cycle Test
- C. Real-Life Test

Correct Answer: C

[EX0-113 PDF Dumps](#)

[EX0-113 Practice Test](#)

[EX0-113 Braindumps](#)