

100% Money Back Guarantee

Vendor: EMC

Exam Code: E22-275

Exam Name: Recoverpoint backup and recovery specialist exam

Version: Demo

QUESTION NO: 1

You are implementing a RecoverPoint CRR solution. The RPAs that were delivered do not have the correct version of RecoverPoint.

What is the EMC-preferred way to load the correct software version to the RPAs?

- A. Before launching Deployment Manager
- B. During the Deployment Manager installation process
- C. After completing the installation but before the license is installed
- D. After the installation is complete

Answer: A

QUESTION NO: 2

A customer is planning to deploy a 2-node RecoverPoint cluster at each data center. They will make use of dual stack for its LAN network connection.

How many IP addresses should the customer plan for per site, including management IP addresses?

- A. 5
- B. 6
- C. 7
- D. 8

Answer: D

QUESTION NO: 3

A customer wants to add a new RecoverPoint UserID. Which role must their UserID belong to in order to manage user settings?

- A. Security
- B. Admin
- C. Boxmgmt
- D. Monitor

Answer: A

QUESTION NO: 4

In a cascaded RecoverPoint configuration, a customer experiences a site failure at the secondary site. What impact does this have on replication?

- A.**
Site 1 to Site 2 replication fails
Site 2 to Site 3 replication fails
- B.**
Site 1 to Site 2 replication fails
Site 2 to Site 3 replication continues
- C.**
Site 1 to Site 2 replication fails
Site 1 to Site 3 replication continues
- D.**
Site 2 to Site 3 replication fails
Site 1 to Site 3 replication continues

Answer: A

QUESTION NO: 5

You are finalizing a RecoverPoint setup that makes use of the Symmetrix VMAXe splitter. You are about to create the masking view for the RecoverPoint cluster initiator group.

Which setting must be enabled to allow the RPAs to write to the replica volumes when image access is disabled?

- A.** Write Protect Bypass
- B.** Always Push Old
- C.** Backlog Mirroring
- D.** Device Tagging

Answer: A

QUESTION NO: 6

Which device allows the installation of a Brocade splitter into a DCX director?

- A. PB-48k-18i
- B. PB-48k-AP
- C. PB-DCX-32P-E
- D. PB-DCX-48P-8G

Answer: B

QUESTION NO: 7

What is the blade processor in a Brocade splitter?

- A. A separate command shell which loads and operates the splitter
- B. A special slot in a Brocade director with intelligent switch capabilities
- C. A daughterboard in the switch to allow RecoverPoint integration
- D. A dedicated memory space in the RPA to integrate with a Brocade switch

Answer: A

QUESTION NO: 8

A customer has a RecoverPoint environment defined with two RPAs at each site. They created two consistency groups (CGs), each one in a different RPA. Their business requires that both consistency groups act as a single unit as they are dependent on one another.

How can they achieve this requirement?

- A. Create one Group Set for both CGs
- B. Enable the RecoverPoint Snapshot Consolidation feature
- C. Select the same primary RPA for both CGs
- D. Configure distributed consistency groups

Answer: A

QUESTION NO: 9

You have just enabled the zones and re-enabled the configuration on a AP-7600B switch. Where would you run the `thirdparty/recoverpoint/install/kdrv status` command to verify the status of the kdriver on the switch?

- A. As root in the blade processor
- B. As admin in the blade processor
- C. As root in the control processor
- D. As admin in the control processor

Answer: A

QUESTION NO: 10

Refer to the Exhibit.

```
Time: Sun Apr 18 17:09:49 2010
Topic: GROUP
Scope: DETAILED
Level: WARNING
Event ID: 4001
Site: London
Groups: [ESX_Group1_LUN_1-4, London_LUN_1-4]
Summary: Group capabilities minor problem
Details: Copies are linked.

RPA1:
Marking (GlobalCopy(LEFT_SITE 0)) = Yes - side defined as source. Site=Cologne.
Transfer (GlobalCopy(RIGHT_SITE 0)) = NO - Link connectivity problem.

RPA2:
Marking (GlobalCopy(LEFT_SITE 0)) = Yes - side defined as source. Site=Cologne.
Transfer (GlobalCopy(RIGHT_SITE 0)) = Yes
Journal (GlobalCopy(RIGHT_SITE 0)) = Yes
Preferred = NO

Group will run on RPA2
```

You are troubleshooting High Load activities on two consistency groups (CGs). As part of your tasks, you have run the data collect and are reviewing the system log files for the CGs.

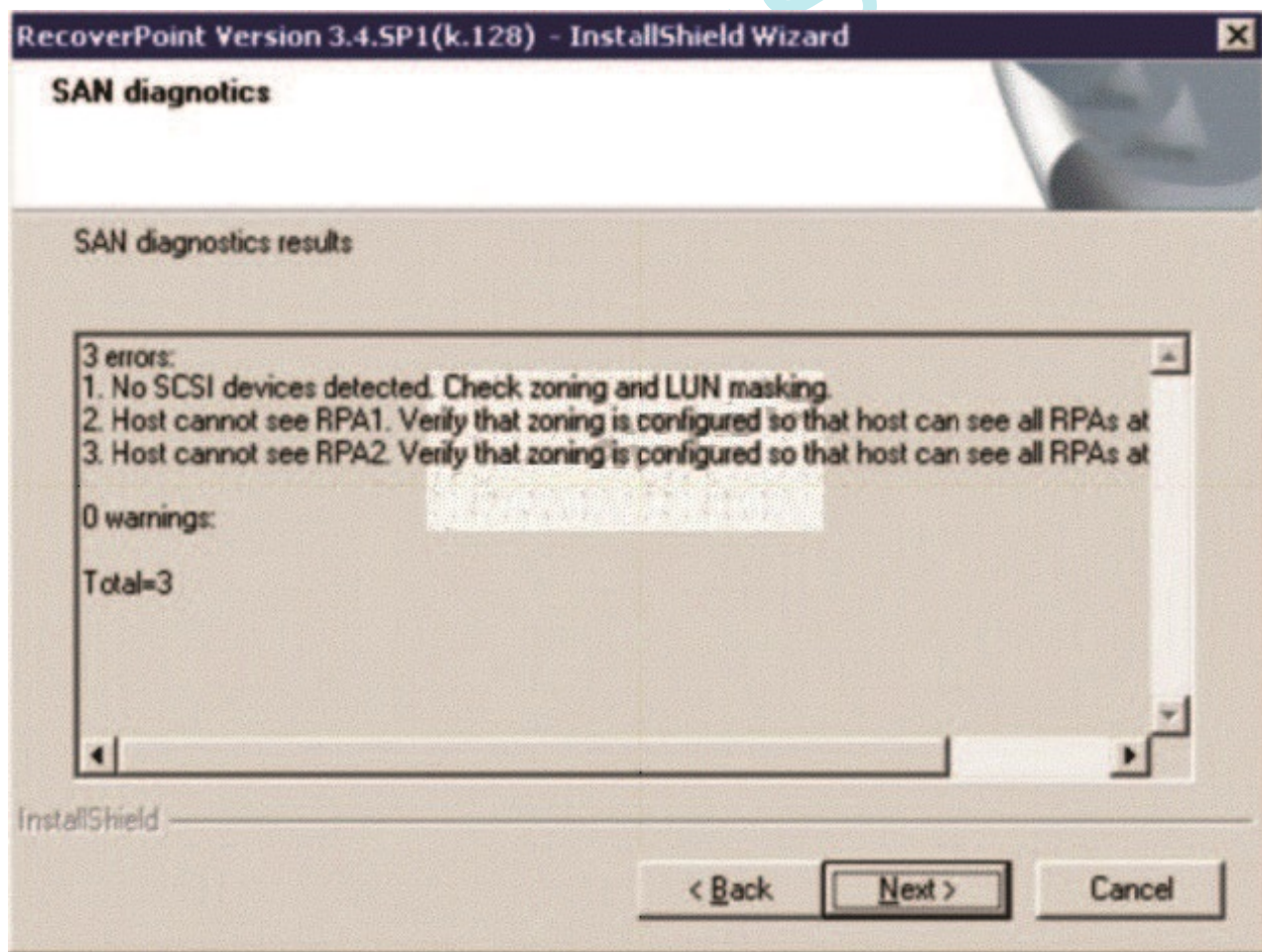
What is a possible root cause for this High Load period?

- A. The preferred RPA has lost communications with the remote RPA and caused a failover of the CG within the cluster.
- B. The local site has lost connectivity to the remote site and caused the CG to go into Marking mode.
- C. There is no journal assigned to the CG in the local site, causing latency build up during data transfer.
- D. The copies are cross-connected between the sites causing additional I/O to flood the connectivity between the sites.

Answer: A

QUESTION NO: 11

When installing a Microsoft Windows kdriver splitter, you receive the dialog box shown in the exhibit and the installation stops.



What must you do to recover the installation?

- A. Click Next, correct the SAN issue, and run SAN Diagnostics again
- [Get Latest & Actual IT Exam Dumps with VCE and PDF from Pass4itSure. https://www.Pass4itSure.com](https://www.Pass4itSure.com)

- B. Click Next and Accept the SAN issue warning to continue the installation
- C. Click Next to resume the installation with flags
- D. Click Back to reconfigure the kdriver parameters

Answer: A

QUESTION NO: 12

You are installing the RecoverPoint splitter agent on a B-Series switch. After downloading the agent binary file to the blade processor, which step must be completed prior to successfully running the command?

- A. `chmod +x agent_binary_file`
- B. `chmod +rw agent_binary_file`
- C. `./thirdparty/recoverpoint/install/zoning_script.sh`
- D. `./thirdparty/recoverpoint/install/kdrv start`

Answer: A

QUESTION NO: 13

You have a customer with an EMC VNX array at each site that uses both block and file storage. They would like to use the VNX splitter to replicate all their iSCSI data LUNs.

How would you configure RecoverPoint?

- A. Use the Consistency Group Wizard to create a CG
- B. Use Installation Manager and "Expose" all iSCSI LUNs
- C. Check the "Enable iSCSI Replication" option in the CG profile
- D. Replication of iSCSI LUNs are not supported at this time

Answer: A

QUESTION NO: 14

Refer to the Exhibit.

```

Port 0
|-----|-----|-----|
|   |Port WWN          |Node WWN          |Port ID |
|-----|-----|-----|
| 1. | 0x500601603ea0024d | 0x50060160bea0024d | cc02ef |
| 2. | 0x500601693ea0024d | 0x50060160bea0024d | cc03ef |
|-----|-----|-----|
Port 1
|-----|-----|-----|
|   |Port WWN          |Node WWN          |Port ID |
|-----|-----|-----|
| 1. | 0x500601613ea0024d | 0x50060160bea0024d | 1f00ef |
| 2. | 0x500601683ea0024d | 0x50060160bea0024d | 1f01ef |
|-----|-----|-----|
Port 2
|-----|-----|-----|
|   |Port WWN          |Node WWN          |Port ID |
|-----|-----|-----|
| 1. | 0x500601613ea0024d | 0x50060160bea0024d | 1f00ef |
| 2. | 0x500601683ea0024d | 0x50060160bea0024d | 1f01ef |
|-----|-----|-----|
Port 3
|-----|-----|-----|
|   |Port WWN          |Node WWN          |Port ID |
|-----|-----|-----|
| 1. | 0x500601603ea0024d | 0x50060160bea0024d | cc02ef |
| 2. | 0x500601693ea0024d | 0x50060160bea0024d | cc03ef |

```

You are troubleshooting a RecoverPoint issue where consistency groups, using a kdriver splitter, have stopped working. While analyzing the problem, you ran detect Fibre Channel targets from the SAN Diagnostics menu. What does this output tell you that relates to the problem in the environment?

- A. RPA is not zoned to any hosts
- B. All RPA HBA ports are being used as targets
- C. Even and odd ports should not see the same targets
- D. Ports 0 and 3 should not be connected to the same fabric

Answer: A

QUESTION NO: 15

Which generation of RecoverPoint Appliance hardware must be used to ensure you can use a CRR over FC configuration?

- A. Gen2 and 3 only
- B. Gen2 and 4 only
- C. Gen2, 3, and 4
- D. Gen3 and 4 only

Answer: D

QUESTION NO: 16

You have finished deploying SANTap in a RecoverPoint CRR environment. At Site 2 everything looks fine. However, at Site 1 you see the following message on the RecoverPoint Management Application:

WARNING: RPA cannot access discovery AVT: 7001248288220000 ; Site1 ; RPA1 in Site1 ;
Cisco - CVT22-2109000dec3c3182

You have checked that back-end and front-end VSANs are properly configured with the correct members in each. Which action can you take to perform a full discovery of ITLs and recreation of AVTs to fix this issue?

- A. SSH as 'admin' and run the refresh_santap_view command
- B. Refresh the splitters on the RecoverPoint Management Application
- C. Rescan the SAN on the RecoverPoint Management Application
- D. SSH as 'admin' and run the get_santap_view command

Answer: A

QUESTION NO: 17

In a Brocade splitter implementation using frame redirect mode, how many DPCs are available?

- A. 1
- B. 2
- C. 3
- D. 4

Answer: B

QUESTION NO: 18

You want to upgrade a RecoverPoint environment using Deployment Manager (DM). As a prerequisite to continuing with the upgrade, which TCP port needs to be open between the management station where the DM is installed and the RPA management IP addresses?

- A. 22
- B. 23
- C. 80
- D. 161

Answer: A

QUESTION NO: 19

You are selecting the RecoverPoint repository volume using Deployment Manager at a customer's site. If the customer's environment makes use of an EMC VNX array, what needs to be considered?

- A. Selected LUN will be formatted
- B. Use of a thin provisioned LUN is supported
- C. LUN is accessible by only one RPA
- D. Thin LUNs have to be pre-allocated

Answer: A

QUESTION NO: 20

You have installed the Solaris kdriver on a host. When validating the installation, you find that the splitter is not seen by the RecoverPoint Management Application. Other splitters appear correctly in the GUI.

Which step should you take on the host to discover the splitter by the GUI?

- A. Run the `/etc/init.d/kdrv start` command

- B. Run the rc.kdrv configure command and restart the kdriver
- C. Run the rc.kdrv start command and reboot the host
- D. Run the devfsadm command

Answer: A

QUESTION NO: 21

You are configuring multiple RecoverPoint 3.4 SP1 clusters sharing a single VNX splitter. Every time you attempt to attach a volume to one of the clusters, you get the error “attached to other cluster”. What is the reason for this fault?

- A. LUN is masked to multiple clusters
- B. LUN is not set to support distributed groups
- C. LUN is not added to a storage group
- D. LUN is private on other clusters

Answer: A

QUESTION NO: 22

What is a RecoverPoint design consideration for the replication volumes in a heterogeneous storage environment using a fabric splitter?

- A. Target volumes must be the same size or larger than the source volumes
- B. Target volume size cannot exceed the size of the source volumes
- C. Target volumes must use the same RAID protection type as the source volumes
- D. Target volumes can use all RAID protection types except RAID 0

Answer: A

QUESTION NO: 23

A customer needs to change the Backlog Mirroring configuration parameters for RecoverPoint. RecoverPoint is using a Symmetrix splitter. How can this change be completed?

- A. Using the CLI only for each consistency group
- B. Using the CLI only for each RPA
- C. Using the GUI only for each consistency group
- D. Using GUI only for each RPA cluster

Answer: A

QUESTION NO: 24

Which VSAN should storage ports be a member of in a SANTap environment?

- A. BE VSAN for all RecoverPoint storage ports
Any VSAN for non-RecoverPoint storage ports
- B. BE VSAN for all non-RecoverPoint storage ports
Any VSAN for RecoverPoint storage ports
- C. FE VSAN for all non-RecoverPoint storage ports
Any VSAN for RecoverPoint storage ports
- D. FE VSAN for all RecoverPoint storage ports
Any VSAN for non-RecoverPoint storage ports

Answer: A

QUESTION NO: 25

You are preparing to perform an FOS and SAS upgrade on a DCX switch, which has a PB-48K-AP blade installed. The RecoverPoint environment is already in production.

While upgrading the firmware, a compatibility error appears between FOS and SAS. How should you proceed?

- A. Run the firmwaredownload -c command
- B. Remove the PB-48K-AP blade in order to do the FOS first
- C. Run the firmwaredownload -s command
- D. Replace the PB-48K-AP blade with one running the new version of SAS

Answer: A

QUESTION NO: 26

Which SAN configuration entities must be created in the fabric when implementing a Solaris host splitter?

- A. Separate server-to-storage, RPA-to-storage, and RPA-to-server zones
- B. Zone and create unique VSANs for the front and back-end devices
- C. Single VSAN and separate multi-VI zones for the RPA and host ports
- D. Separate AVT, CVT, and DVT zones for the host-to-RPA ports

Answer: A

QUESTION NO: 27

A customer is planning to use RecoverPoint as a replication solution between two locations. They want to synchronously replicate the data.

Which two elements affect this type of replication?

- A. Distance and latency
- B. Volume size and link speed
- C. Application consistency and connection type
- D. Protocol and volume size

Answer: A

QUESTION NO: 28

During a failover event, you have determined that the last bookmark had corrupted data. What is the fastest way to find the last good replica?

- A. Move to the previous point in time
- B. Create a new bookmark and make it available to the host
- C. Failback to the primary and create a new replica
- D. Complete the failover and restore the data from the local backup

Answer: A

QUESTION NO: 29

You are onsite investigating some performance issues in a RecoverPoint environment. EMC Support requests that you execute a `detect_bottlenecks` command.

How should this command be executed?

- A. Connect to the floating IP and log in as 'admin'
- B. Connect to the floating IP and log in as 'security-admin'
- C. Connect to the SiteControl RPA and log in as 'boxmgmt'
- D. Connect to the SiteControl RPA and log in as 'security-admin'

Answer: A

QUESTION NO: 30

You have installed and configured the IBM AIX kdriver on a host. When validating the installation, you find that the splitter is not seen by the RecoverPoint Management Application. Other splitters appear correctly in the GUI.

Which step should you take on the host to discover the splitter by the GUI?

- A. Run the `rc.kdrv start` command and reboot the host
- B. Run the `rc.kdrv configure` command and restart the kdriver
- C. Remove and reinstall the kdriver on the host
- D. Run the `pkgadd -d` command and restart the kdriver

Answer: A

QUESTION NO: 31

A customer has an ESX server running six Microsoft Windows 2008 virtual machines. The customer would like to replicate data through CRR from these virtual machines using host-based splitters. Which type of ESX volumes can be replicated?

- A. RDM in physical mode

- B. RDM in virtual mode
- C. VMFS volumes
- D. VMFS with extents

Answer: D

QUESTION NO: 32

A customer suspects their WAN IP network has performance problems. Which IP diagnostic tool can be used to confirm this issue?

- A. Test Throughput
- B. Port diagnostics
- C. Full mesh network test
- D. View Routing Table

Answer: C

QUESTION NO: 33

A customer running RecoverPoint 3.4 wants to expand their cluster from four nodes to eight nodes. Based on EMC best practice, which step should be performed during the expansion?

- A. Utilize the Add New RPAs Wizard in Deployment Manager to add the RPAs non-disruptively
- B. After the first node has been reconfigured, import its changed settings onto the remaining RPAs
- C. Repository volume must be formatted on all nodes in the original RPA cluster
- D. Add the new RPAs to the cluster before the fourth node is reconfigured

Answer: A

QUESTION NO: 34

In order to enable consistency group WAN deduplication, which feature must also be enabled?

- A. Compression

- B. Snapshot Consolidation
- C. Distributed Consistency Group
- D. Allow Regulation

Answer: A

QUESTION NO: 35

A customer has four remote locations and one central headquarters (HQ) location. They would like to replicate the four remote locations back to headquarters. The environment consists of the following:

- VNX 5500 at Sites A, B, and C
- CX4-240 at Site D
- VNX 7500 at HQ

Which cost-effective RecoverPoint configuration would you recommend?

- A. 2 RPA clusters configured at HQ with CLR; each cluster replicating two remote sites back to HQ
- B. 4 RPA clusters configured with CRR; one at each location and all are replicating to the VNX 7500 at HQ
- C. 4 RPA clusters with stretched CDP; one at each location and all are replicating to the VNX 7500 at HQ
- D. 4 RPA clusters with three additional VNX/CLARiiONs at HQ

Answer: B

QUESTION NO: 36

You are using BCSD to determine the journal volume size. Which input parameters are required?

- A. Rate of change, data set to be replicated, and RPO/RTO
- B. Rate of change, percentage of sequential writes, and RPO/RTO
- C. Number of snapshots to retain, change rate, and network type
- D. Number of consistency groups, RPO/RTO, and network type

Answer: A

QUESTION NO: 37

A customer has asked you about the very large journal lag as shown in the exhibit. The customer is concerned about the lag counter and the Current Protection Window represented in "red", indicating a problem. However, the Protection Window is secure.

RecoverPoint Management Application - 10.127.118.52 (P1-Site1)

Copy System Help

P1-Site1 **P2-Site2**

Hosts, Switch, RPAs, Storage

System traffic

mb/s

100, 75, 50, 25, 0

14:48, 14:49, 14:50, 14:51, 14:52

— local SAN — site-to-site

Consistency Groups

- AIX_CG
 - Prod
 - Local_Copy
- Win_CG
 - Remote_Copy
 - Prod
- Splitbars
- RPAs
- Volumes
- vCenter Servers
- System Monitoring
- Logs

Win_CG - Prod at P1-Site1

Journal Policy

Image

Current: 09/29 14:33:46 .857533

Storage: Virtual access - Rolling to image (0% full)

Journal

Journal Lag: 619MB

Compression Ratio: N/A

Required Protection Window: 1 hour

Current Protection Window: 42 secs and 18 millis

Predicted Protection Window: N/A

Space Saved By Consolidation: N/A

Sample Images

Time	Size	Bookmark Details	Consolidation Policy
09/29 14:33:43	0.0 bytes		
09/29 14:33:46	45.5MB		
09/29 14:33:50	48.2MB		
09/29 14:33:53	45.8MB		
09/29 14:33:56	45.8MB		
09/29 14:34:00	47.9MB		
09/29 14:34:03	45.8MB		
09/29 14:34:06	45.5MB		
09/29 14:34:09	48.2MB		
09/29 14:34:12	45.5MB		
09/29 14:34:16	45.8MB		
09/29 14:34:19	48.2MB		
09/29 14:34:22	45.8MB		
09/29 14:34:25	45.5MB		

2 warnings detected. Click for more info...

P1-Site1 RPA 1 admin

The customer does not understand why these two settings seem to show a conflict in the GUI. How do you explain the situation to the customer?

- A. LUN is in image access mode and direct writes are being placed in the journal which increases the journal lag while working on the virtual LUN.
- B. Current Protection Window shows "red" because there is such a long lag and the RPA knows it cannot destage that amount of data within the Required Protection Window.
- C. LUN is rolling back from image access mode. The lag and Current Protection Window will not be updated until the rollback is complete.
- D. Current Protection Window is in danger of failing and requires a Long Resync to destage the data and reset the Protection Window calculations.

Answer: A

QUESTION NO: 38

Before you can start a RecoverPoint installation using Deployment Manager, which network ports must be open between the installation workstation and the RPA management IP addresses?

- A. Port 22, 443, and 80
- B. Port 22, 8081, and 8082
- C. Port 23, 7225, and 7777
- D. Port 23, 8081, and 8082

Answer: B

QUESTION NO: 39

You are using Deployment Manager to deploy RecoverPoint at a customer's site. The customer wants to create the LUN before the installation starts. However, they would like to know about the minimum size required for the Repository volume.

What is the minimum size of the LUN?

- A. RecoverPoint 3.3.x and earlier = 2.5 GB
RecoverPoint 3.4.x and later = 5 GB
- B. RecoverPoint 3.3.x and earlier = 2.86 GB
RecoverPoint 3.4.x and later = 5.72 GB
- C. RecoverPoint 3.3.x and earlier = 3 GB
RecoverPoint 3.4.x and later = 6 GB
- D. All versions of RecoverPoint require a 5 GB Repository

Answer: B

QUESTION NO: 40

You have a security conscious customer. They would like to deploy RecoverPoint with the minimum required for network communications. They have provided a management workstation at each location.

The replication network between the RPAs has no blocks. However, the management network is self-contained at each site and only communicates to its respective management workstation.

How would you deploy RecoverPoint in this environment using Deployment Manager?

- A. Save the configuration file and use this file to install each respective site
- B. Configure Deployment Manager to communicate through the WAN network
- C. Each management workstation must have access to both management networks at both sites
- D. Installation Manager must be used to install the environment

Answer: A

QUESTION NO: 41

You are preparing to begin a RecoverPoint upgrade to version 3.4. Which condition must be met to use Deployment Manager?

- A. Ensure that TCP ports 21, 22, 8081, and 8082 are enabled
- B. Enable reservations support for consistency groups
- C. Obtain a new license and activation key
- D. At least one 3.4 ISO image is burned onto a DVD-R

Answer: A

QUESTION NO: 42

In a remote replication over Fibre Channel configuration, what is the purpose of using IP connectivity?

- A. Inter-site log collection and NTP synchronization
- B. NTP synchronization and incremental replication
- C. Load balancing the replication with FC connectivity
- D. Control connections and differential replication

Answer: A

To Read the [Whole Q&As](#), please purchase the [Complete Version](#) from [Our website](#).

Trying our product !

- ★ **100%** Guaranteed Success
- ★ **100%** Money Back Guarantee
- ★ **365 Days** Free Update
- ★ **Instant Download** After Purchase
- ★ **24x7** Customer Support
- ★ Average **99.9%** Success Rate
- ★ More than **69,000** Satisfied Customers Worldwide
- ★ Multi-Platform capabilities - **Windows, Mac, Android, iPhone, iPod, iPad, Kindle**

Need Help

Please provide as much detail as possible so we can best assist you.

To update a previously submitted ticket:



 One Year Free Update <p>Free update is available within One Year after your purchase. After One Year, you will get 50% discounts for updating. And we are proud to boast a 24/7 efficient Customer Support system via Email.</p>	 Money Back Guarantee <p>To ensure that you are spending on quality products, we provide 100% money back guarantee for 30 days from the date of purchase.</p>	 Security & Privacy <p>We respect customer privacy. We use McAfee's security service to provide you with utmost security for your personal information & peace of mind.</p>
---	---	--

Guarantee & Policy | Privacy & Policy | Terms & Conditions

Any charges made through this site will appear as Global Simulators Limited.

All trademarks are the property of their respective owners.