



E20-340^{Q&As}

Clariion solutions implementation

Pass EMC E20-340 Exam with 100% Guarantee

Free Download Real Questions & Answers **PDF** and **VCE** file from:

<https://www.pass4itsure.com/e20-340.html>

100% Passing Guarantee
100% Money Back Assurance

Following Questions and Answers are all new published by EMC
Official Exam Center

-  **Instant Download** After Purchase
-  **100% Money Back** Guarantee
-  **365 Days** Free Update
-  **800,000+** Satisfied Customers



**QUESTION 1**

A customer is using MV/A in a remote data center to protect a LUN. They also use the same source LUN for an ISC job to distribute the content of their parts catalogue to 27 regional offices.

What is the maximum number of snapshots of the source LUN they can take if they need to use a SnapView Recovery Session?

- A. 5
- B. 8
- C. 7
- D. 6

Correct Answer: A

QUESTION 2

Which Unisphere dialog allows users to configure the amount of write and read cache for SPB?

- A. Storage System Properties, SP Memory tab
- B. Storage System Properties, SP Cache tab
- C. SPB Properties, General tab
- D. Storage System Properties, General tab

Correct Answer: A

QUESTION 3

Which utility is recommended for the alignment of disks in a Linux environment?

- A. fdisk
- B. diskpart
- C. diskpar
- D. format

Correct Answer: A

QUESTION 4

Which is a result of a LUN migration?



- A. The source LUN is automatically destroyed after copy completes.
- B. The destination LUN will be the same RAID group type.
- C. The destination LUN will have a new unique LUN ID.
- D. The source LUN will require manual trespass.

Correct Answer: A

QUESTION 5

A customer has several native devices configured on a Linux server running critical applications. They ask your advice to ensure the applications will not be disrupted if additional devices are added. What do you recommend?

- A. Use PowerPath pseudo-device names for host applications.
- B. Use DMPIO on the server for host application devices.
- C. Configure the server in failover mode 4 for his applications.
- D. Configure persistent binding for his host application devices.

Correct Answer: A

QUESTION 6

For security reasons, you are customizing the X.509 certificate's subject on a CX4-960.

What must be the subject's organization unit name?

- A. CLARiiON
- B. Storage processors' IP
- C. Fully qualified domain name
- D. The host name

Correct Answer: A

QUESTION 7

Which Connectrix B-series switch provides a maximum of 8 Gb/s connectivity per port?

- A. DS-5300B
- B. ED-48000B
- C. DS-4900B

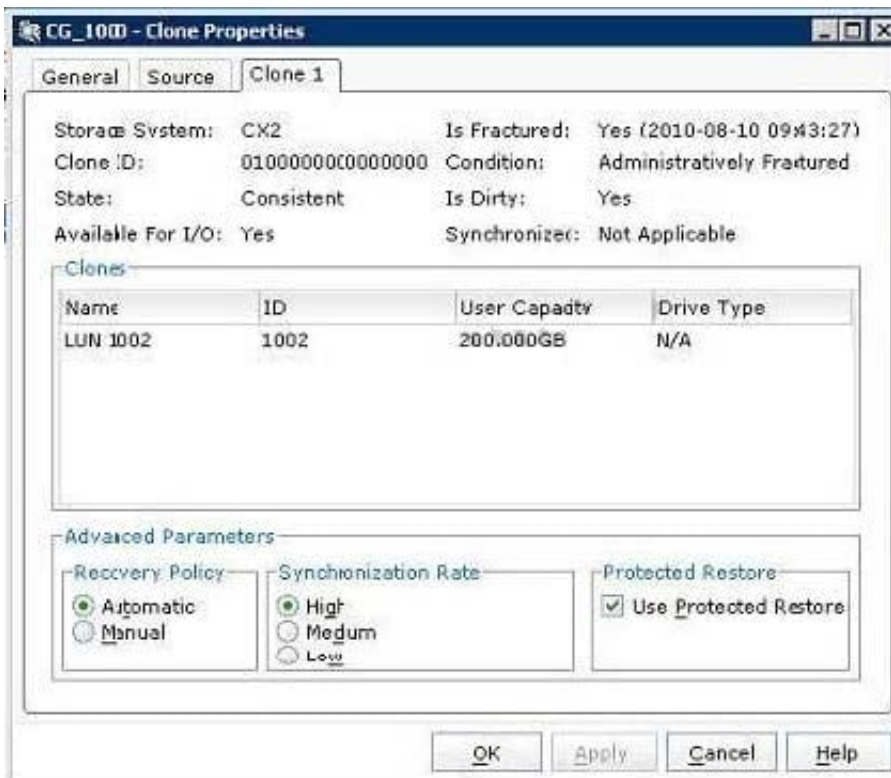


D. DS-5000B

Correct Answer: A

QUESTION 8

Refer to the exhibit.



Which statement describes the state of the clone?

- A. It has been modified by its owning host.
- B. It cannot be incrementally synchronized.
- C. It contains exactly the same data as the source LUN.
- D. It uses the same drive type as the source LUN.

Correct Answer: A

QUESTION 9

The Access Logix ACL entries consist of the CLARiiON SP port WWN and which other two elements?

- A. LUN UID and Host HBA WWN
- B. LUN UID and Host HBA WWP



- C. LUN HLU and Host HBA WWN
- D. Host SID and CLARiiON serial number

Correct Answer: A

QUESTION 10

When working with FLARE 30, which tool is required when upgrading FLARE or performing a DAE upgrade?

- A. Unisphere Service Manager
- B. Unisphere Server Utility
- C. Unisphere Initialization Utility
- D. NDU Upgrade Tool

Correct Answer: A

QUESTION 11

A customer would like to extend their CX4 cache after purchasing Flash drives.

Which Unisphere dialog should be used to configure this feature?

- A. Storage System Properties, FAST Cache tab
- B. Storage SP Properties, Cache tab
- C. Storage SP Properties, SP Memory tab
- D. Storage System Properties, SP Cache

Correct Answer: A

QUESTION 12

What is used to identify the array when first starting the Unisphere Initialization Utility?

- A. Serial number of the array
- B. WWN seed of the SPE
- C. IP address of the service port
- D. Serial number of the management module

Correct Answer: A

**QUESTION 13**

A host is connected to a CX4 via a Fibre Channel HBA through a Brocade switch. The LUNs assigned to the host are out of space. The customer would like to use the iSCSI cards in the array for the additional storage required.

Which solution do you recommend for adding the new storage to this host?

- A. Use existing Fibre Channel only.
- B. Add a TOE iSCSI card for iSCSI attach.
- C. Use the existing network port for iSCSI attach.
- D. Add an iSCSI HBA with CHAP security.

Correct Answer: A

QUESTION 14

On a Windows server with PowerPath installed, how is I/O routed to the non-owning SP of a LUN?

- A. I/O is balanced across active optimal paths for a given LUN.
- B. I/O is balanced across active paths using the First In, First Out algorithm.
- C. I/O is sent across all paths using the round-robin algorithm.
- D. I/O load balances across non-optimal paths for a given LUN.

Correct Answer: A

QUESTION 15

A new switch is received and needs to be connected into an existing SAN. What port type is used for the ISL trunking feature?

- A. E_port
- B. F_port
- C. FL_port
- D. G_port

Correct Answer: A