



C2020-632^{Q&As}

IBM Cognos 10 BI Metadata Model Developer

Pass IBM C2020-632 Exam with 100% Guarantee

Free Download Real Questions & Answers **PDF** and **VCE** file from:

<https://www.pass4itsure.com/C2020-632.html>

100% Passing Guarantee
100% Money Back Assurance

Following Questions and Answers are all new published by IBM Official Exam Center

-  **Instant Download** After Purchase
-  **100% Money Back** Guarantee
-  **365 Days** Free Update
-  **800,000+** Satisfied Customers





QUESTION 1

In Framework Manager, which of the following will have a positive impact on query performance without intervention from an author?

- A. Create stand-alone filters.
- B. Add performanceindicators to functions.
- C. Configure data sources in a project pointing to the same database instance to use the same connection.
- D. For a query item having an integer data type, set the Display Item Reference property to display an integer value.

Correct Answer: C

QUESTION 2

The Cognos 10 report below contains two conformed dimensions, Time Dimension and Product Dimension, and one non-conformed dimension, Order Method.

MONTH	PRODUCT_NAME	ORDER_METHOD	QUANTITY	EXPECTED_VOLLME
April 2004	Aloe Relief	Telephone	286	1,690
April 2004	Aloe Relief	Web	854	1,690
April 2004	Aloe Relief	E-mail	270	1,690
April 2004	Bear Edge	Telephone	224	529
April 2004	Bear Edge	Web	60	

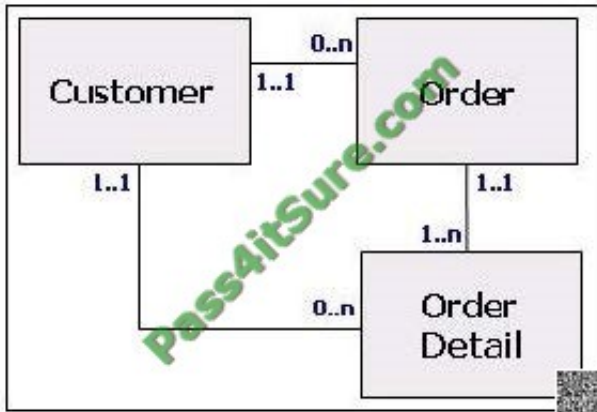
Which of the following best describes the results?

- A. Cross join
- B. Multi-fact split
- C. Correlated list
- D. Contiguous result set

Correct Answer: C

QUESTION 3

In a transitive relationship scenario, what problems exist when reporting from the tables below?



- A. The Order table must be included in each query.
- B. The Order Detail table has conflicting cardinalities.
- C. The priority path must be defined.
- D. There is more than one possible path between the tables.

Correct Answer: D

QUESTION 4

In Cognos 10, which of the following is true of multi-fact result sets?

- A. Only correlated result sets can have repeating fact values.
- B. Only contiguous result sets can have repeating fact values.
- C. Both contiguous and correlated lists can have repeating fact values.
- D. Both contiguous and correlated lists cannot have repeating fact values.

Correct Answer: C

QUESTION 5

Which of the following is true regarding the operational data structure illustrated below?



- A. It illustrates a parallel relationship.
- B. It should be consolidated into one table.



- C. It should be examined for a connection trap.
- D. The cardinality between the tables should be reversed.

Correct Answer: C

QUESTION 6

The groups and roles defined in the Cognos namespace can be used to assign access rights to which of the following Framework Manager objects?

- A. Query items.
- B. Data sources.
- C. Relationships.
- D. Parameter maps.

Correct Answer: A

QUESTION 7

What technique can Framework Manager modelers use to implement a time dimension for models that lack a time dimension?

- A. Create relationships from date fields in one dimension to date fields in another dimension.
- B. Use parameter maps to map date values in one query subject to date values in another query subject.
- C. Use the Time Dimension wizard to generate a time dimension and create the appropriate relationships.
- D. Identify a time dimension table source, import into the model and create relationships to fact query subjects.

Correct Answer: D

QUESTION 8

Which of the following components does a basic Cognos 10 stitch query consist of?

- A. SC() function, full outer join, multiple queries that each query exclusive information.
- B. SC() function, full outer join, multiple queries that query some of the same information.
- C. Coalesce function, full outer join, multiple queries that each query exclusive information.
- D. Coalesce function, full outer join, multiple queries that query some of the same information.

Correct Answer: D

**QUESTION 9**

Which of the following join types does the generated SQL below illustrate?

```
select
    Manager.Manager as Manager,
    Product.Product as Product
from
    datasource_name.database_name.schema.Manager
    Manager
    datasource_name.database_name.schema.Product
    Product
```



- A. Inner join
- B. Disjointed join
- C. Outer join
- D. Cross join

Correct Answer: D

QUESTION 10

After metadata is imported into Framework Manager or a new query subject is created, it is recommended to first verify which one of the following property settings?

- A. Usage
- B. Aggregate
- C. Data Type
- D. Semi-Aggregate

Correct Answer: A

QUESTION 11

Which of the following data structures typically contain normalized data?

- A. Cube
- B. Relational
- C. Operational
- D. Data Warehouse



Correct Answer: C

QUESTION 12

A recursive relationship exists between SALES_STAFF_CODE and MANAGER_CODE in the SALES_STAFF data source query subject. This query subject is provided in a model to report authors. Using this query subject alone, report authors cannot create a report that includes management staff and the salesstaff that report to them. How can the existing recursive relationship in the model be modified to provide this ability to report authors?

- A. Import a query subject that does not contain a recursive relationship.
- B. Create a star schema grouping that contains the SALES_STAFF data source query subject and a shortcut to the SALES_STAFF data source query subject.
- C. Create a model query subject with the appropriate relationship to the existing SALES_STAFF data source query subject and make both available to report authors.
- D. Create a shortcut to the SALES_STAFF data source query subject, and report authors will use it instead of the underlying query subject to create the required report.

Correct Answer: C

[C2020-632 VCE Dumps](#)

[C2020-632 Practice Test](#)

[C2020-632 Study Guide](#)



To Read the [Whole Q&As](#), please purchase the [Complete Version](#) from [Our website](#).

Try our product !

100% Guaranteed Success

100% Money Back Guarantee

365 Days Free Update

Instant Download After Purchase

24x7 Customer Support

Average 99.9% Success Rate

More than 800,000 Satisfied Customers Worldwide

Multi-Platform capabilities - [Windows](#), [Mac](#), [Android](#), [iPhone](#), [iPod](#), [iPad](#), [Kindle](#)

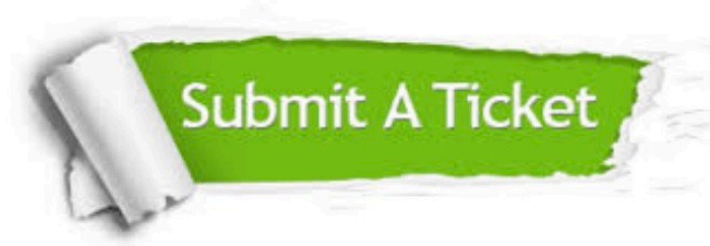
We provide exam PDF and VCE of Cisco, Microsoft, IBM, CompTIA, Oracle and other IT Certifications. You can view Vendor list of All Certification Exams offered:

<https://www.pass4itsure.com/allproducts>

Need Help

Please provide as much detail as possible so we can best assist you.

To update a previously submitted ticket:



 <p>One Year Free Update Free update is available within One Year after your purchase. After One Year, you will get 50% discounts for updating. And we are proud to boast a 24/7 efficient Customer Support system via Email.</p>	 <p>Money Back Guarantee To ensure that you are spending on quality products, we provide 100% money back guarantee for 30 days from the date of purchase.</p>	 <p>Security & Privacy We respect customer privacy. We use McAfee's security service to provide you with utmost security for your personal information & peace of mind.</p>
---	---	--

Any charges made through this site will appear as Global Simulators Limited.

All trademarks are the property of their respective owners.

Copyright © pass4itsure, All Rights Reserved.