



# C2020-012<sup>Q&As</sup>

IBM SPSS Modeler Data Analysis for Business Partners v2

## Pass IBM C2020-012 Exam with 100% Guarantee

Free Download Real Questions & Answers **PDF** and **VCE** file from:

<https://www.pass4itsure.com/C2020-012.html>

100% Passing Guarantee  
100% Money Back Assurance

Following Questions and Answers are all new published by IBM Official Exam Center

-  **Instant Download** After Purchase
-  **100% Money Back** Guarantee
-  **365 Days** Free Update
-  **800,000+** Satisfied Customers





### QUESTION 1

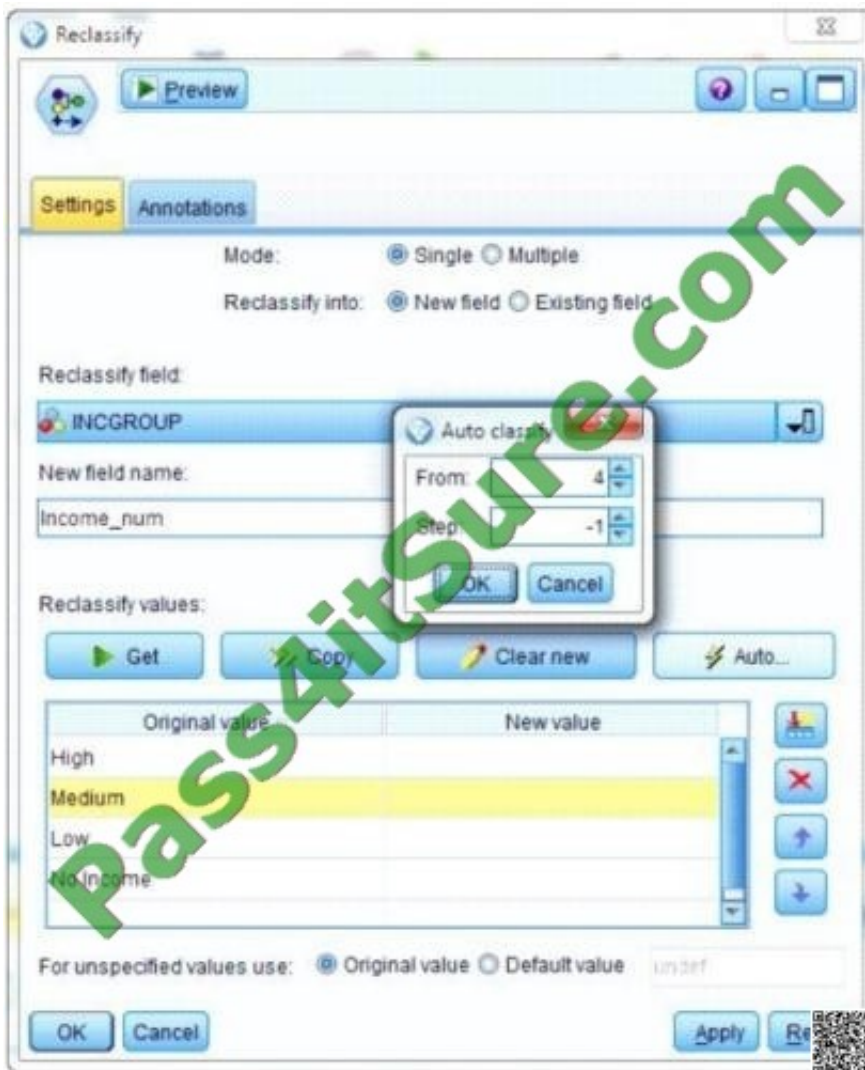
Which of the following types of nodes will have data flowing both in and out, when used in a stream?

- A. Record Ops
- B. Graphs
- C. Export
- D. Sources

Correct Answer: A

### QUESTION 2

What new value will be assigned to the original value Low given the specifications in the Reclassify node below?





- A. -1
- B. 2
- C. 3
- D. 4

Correct Answer: B

**QUESTION 3**

System undefined values (\$null\$) are automatically defined as blank (missing) values in IBM SPSS Modeler.

- A. True
- B. False

Correct Answer: B

**QUESTION 4**

Only Terminal nodes (Graphs, Modeling, Output, Export) have a Run button as displayed in the graphic.





A. True

B. False

Correct Answer: A

---

#### QUESTION 5

The SetToFlag node creates separate flag fields for values of a categorical field. It must be followed by an Aggregate node in order to aggregate the flag fields on a groupingfield such as transaction records grouped to customer's records.

A. True

B. False

Correct Answer: B

---

#### QUESTION 6

Which is the standard node for displaying the relationship between two continuous variables?



A. Option A

B. Option B

C. Option C

D. Option D

Correct Answer: B

---

### QUESTION 7

The optimal binning method in the Binning node uses a Supervisor field to determine the binning cut points.

A. True

B. False

Correct Answer: A

---



### QUESTION 8

Which fields are created by this Derive dialog?



- A. Three fields representing the difference between Travel-1 and each of the other Travel fields
- B. No operation will be performed because the expression is invalid.
- C. Four fields representing the difference in weeks between AcctEst and each of the Travel fields
- D. A field representing the difference between AcctEst and the global @FIELD value

Correct Answer: C

### QUESTION 9

The Matrix node is used to examine the relationship between two categorical fields.



- A. True
- B. False

Correct Answer: A

### QUESTION 10

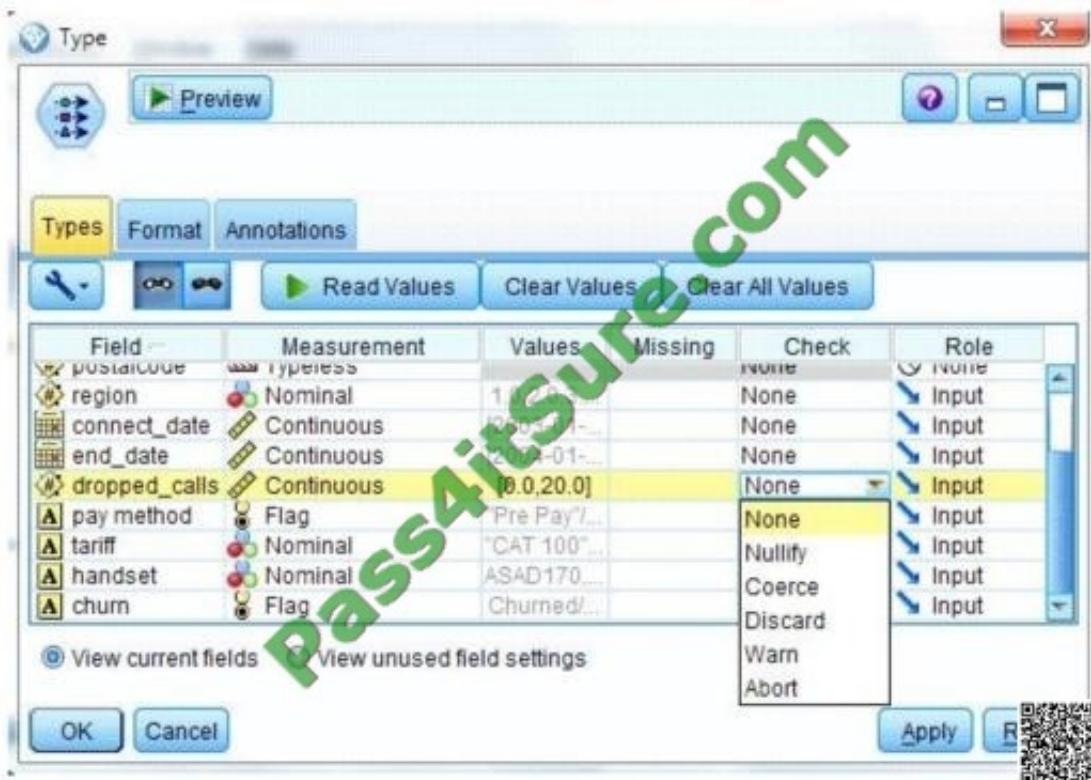
Which node is used to read data from a comma delimited text file?

- A. Var. File
- B. Data Collection
- C. Fixed File
- D. Statistics File

Correct Answer: A

### QUESTION 11

Given the Type node shown below, what specifications are necessary to change all values outside the range 1 to 15 in field dropped calls to the undefined (\$null\$) value?



- A. Pass Values and Check action Nullify



- B. Specify Values Lower 1 and Upper 15 and Check action Nullify
- C. Specify Values Lower 1 and Upper 15 and Check action Discard
- D. Read Values and Check action Warn

Correct Answer: B

### QUESTION 12

Examine the Data Audit output shown below.

Field	Measurement	Outliers	Extremes	Action	Impute M...	Method	% Complete	Valid
ACCOM	Nominal	--	--		Never	Fixed	100	
COUNTRY	Nominal	--	--		Never	Fixed	100	
CUSTID	Nominal	--	--		Never	Fixed	100	
DIST_TO_BE...	Continuous	1	0	None	Never	Fixed	100	
DOB	Nominal	--	--		Never	Fixed	100	
GENDER	Nominal	--	--		Never	Fixed	98.681	
HOLCODE	Nominal	--	--		Never	Fixed	100	
HOLCOST	Continuous	9	1	Discard	Never	Fixed	97.889	
NAME	Nominal	--	--		Never	Fixed	100	
NIGHTS	Continuous	0	0	Nullify	Never	Fixed	100	
NUMPARTY	Continuous	6	0	None	Never	Fixed	100	
POOL	Flag	--	--		Never	Fixed	100	
REGION	Nominal	--	--		Never	Fixed	100	
TRAVDATE	Nominal	--	--		Never	Fixed	100	

What action will occur in a generated Outlier and Extreme Super node for HOLCOST?

- A. Nine records will be set to the system missing (null) value for HOLCOST.
- B. Ten records will be deleted.
- C. Ten records will be set to the system missing (null) value for HOLCOST.
- D. Nine records will be deleted

Correct Answer: B

[Latest C2020-012 Dumps](#)

[C2020-012 Practice Test](#)

[C2020-012 Brainsdumps](#)





To Read the [Whole Q&As](#), please purchase the [Complete Version](#) from [Our website](#).

## Try our product !

100% Guaranteed Success

100% Money Back Guarantee

365 Days Free Update

Instant Download After Purchase

24x7 Customer Support

Average 99.9% Success Rate

More than 800,000 Satisfied Customers Worldwide

Multi-Platform capabilities - [Windows](#), [Mac](#), [Android](#), [iPhone](#), [iPod](#), [iPad](#), [Kindle](#)

We provide exam PDF and VCE of Cisco, Microsoft, IBM, CompTIA, Oracle and other IT Certifications. You can view Vendor list of All Certification Exams offered:

<https://www.pass4itsure.com/allproducts>

## Need Help

Please provide as much detail as possible so we can best assist you.

To update a previously submitted ticket:



 <p><b>One Year Free Update</b> Free update is available within One Year after your purchase. After One Year, you will get 50% discounts for updating. And we are proud to boast a 24/7 efficient Customer Support system via Email.</p>	 <p><b>Money Back Guarantee</b> To ensure that you are spending on quality products, we provide 100% money back guarantee for 30 days from the date of purchase.</p>	 <p><b>Security &amp; Privacy</b> We respect customer privacy. We use McAfee's security service to provide you with utmost security for your personal information &amp; peace of mind.</p>
---	---	--

Any charges made through this site will appear as Global Simulators Limited.

All trademarks are the property of their respective owners.

Copyright © pass4itsure, All Rights Reserved.