



74-409^{Q&As}

Server Virtualization with Windows Server Hyper-V and System Center

Pass Microsoft 74-409 Exam with 100% Guarantee

Free Download Real Questions & Answers **PDF** and **VCE** file from:

<https://www.pass4itsure.com/74-409.html>

100% Passing Guarantee
100% Money Back Assurance

Following Questions and Answers are all new published by Microsoft
Official Exam Center

-  **Instant Download** After Purchase
-  **100% Money Back** Guarantee
-  **365 Days** Free Update
-  **800,000+** Satisfied Customers





QUESTION 1

A company uses System Center 2012 R2 Virtual Machine Manager (VMM) to manage their Hyper-V environment. The VMM environment has two host groups named Dev and Prod. The Hyper-V environment has the following requirements:

Administrators of the Prod host group must be able to manage virtual machines (VMs) and perform all VMM administrative tasks only within the Prod host group.

Administrators of the Dev host group must be able to manage VMs and perform all VMM administrative tasks only within the Dev host group.

Administrators of the Dev host group must be able to provision new Hyper-V host servers from physical computers for the Dev host group.

The security administrators must be able to add user objects to the Administrator role in VMM.

All delegation must adhere to the principle of least privilege.

You need to configure the user role profiles for each host group. Which user role profiles should you assign? To answer, drag the appropriate user role profile to the correct user group.

Each user role profile may be used once, more than once, or not at all. You may need to drag the split bar between panes or scroll to view content.

Select and Place:

The interface shows a list of user role profiles on the left and three groups of administrators on the right. The groups are labeled 'Prod administrators', 'Dev administrators', and 'Security administrators'. Each group has a corresponding empty box for role assignment. A vertical split bar is visible between the list and the groups.

User Role Profile	Prod administrators	Dev administrators	Security administrators
Fabric Administrator			
Application Administrator			
Tenant Administrator			
Administrator			
Read-Only Administrator			



Correct Answer:



Note:

* Fabric Administrator (Delegated Administrator)

Members of the Delegated Administrator user role can perform all administrative tasks within their assigned host groups, clouds, and library servers, except for adding XenServer and

adding WSUS servers. Delegated Administrators cannot modify VMM settings, and cannot add or remove members of the Administrators user role.

<http://technet.microsoft.com/en-us/library/gg696971.aspx>

QUESTION 2

Server	Switch	VLAN ID	Description
VM-SERVER1	VirtualSwitch1	30	Lab Environment
VM-SERVER2	VirtualSwitch2	50	Production Environment

You administer a Windows Server 2012 R2 server that has the Hyper-V role installed. The host server has the following configuration:

You deploy a new lab virtual machine named VM-SERVER3. You need to ensure that VM-SERVER3 communicates only with VM-SERVER1.



Which three actions should you perform in sequence? To answer, move the appropriate actions from the list of actions to the answer area and arrange them in the correct order.

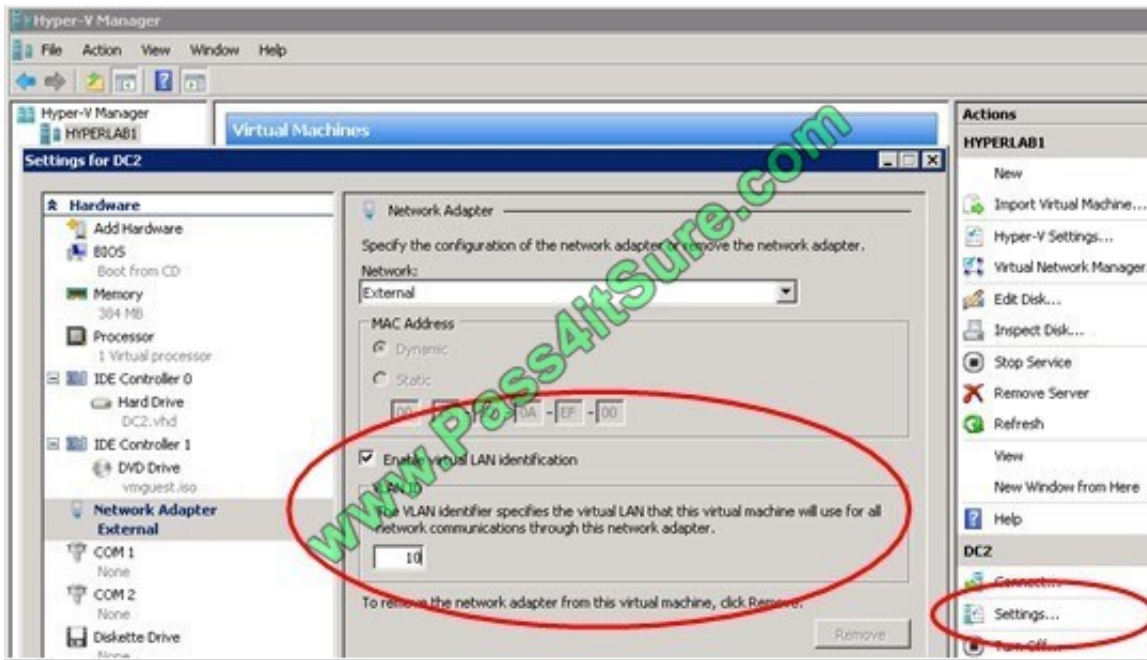
Select and Place:

- On VM-SERVER3, add a virtual network adapter and associate it with VirtualSwitch1.
- Run the Windows PowerShell cmdlet **Enable-VMSwitchExtension**.
- On VM-SERVER3, add a virtual network adapter and associate it with VirtualSwitch2.
- Enable virtual LAN (VLAN) identification.
- Configure a virtual LAN (VLAN) ID of 50.
- Configure a virtual LAN (VLAN) ID of 30.

Correct Answer:

- On VM-SERVER3, add a virtual network adapter and associate it with VirtualSwitch1.
- Enable virtual LAN (VLAN) identification.
- Configure a virtual LAN (VLAN) ID of 30.

Note:



For step 2 and step 3 refer to the diagram below.

Incorrect:

Not Enable-VMSwitchExtension: The Enable-VMSwitchExtension cmdlet enables one or more extensions on one or more switches. You can use the Get-VMSystemSwitchExtension cmdlet to enumerate the virtual switch extensions installed

on the system.

Ref: <http://blogs.msdn.com/b/adamfazio/archive/2008/11/14/understanding-hyper-v-vlans.aspx>

QUESTION 3

A company has seven Windows Server 2012 R2 virtual machines (VMs). The VMs are running and are accessible over the network. You plan to copy a large .ISO file from the host server to each of the VMs. The copy operations must meet the following requirements:

The VMs must remain accessible over the network during the copy operations.

The copy operations must NOT use a network connection.

You need to configure the VMs. What should you do on each VM?

- A. Enable the Guest services integration service.
- B. Enable the Data Exchange integration service.
- C. Add a network adapter, and then enable the virtual machine queue (VMQ) option on the adapters.
- D. Set the value of the Smart Paging File Location property to %SYSTEMROOT%\temp.

Correct Answer: A



Ref: <http://technet.microsoft.com/en-us/library/dn282278.aspx>

Q: What is the new Guest services integration service in Windows Server 2012 R2 Hyper-V?

A: Several integration services are available for virtual machines (VMs) such as time synchronization, heartbeat, backup, OS shutdown, and data exchange. In Windows Server 2012 R2, a new integration service has been added, Guest services. Guest services enables the copying of files to a VM using WMI APIs or using the new Copy-VMFile Windows PowerShell cmdlet.

QUESTION 4

A company has one Active Directory Domain Services (AD DS) forest that contains two domains. All servers run Windows Server 2012 R2. The company uses iSCSI storage and Fibre Channel storage.

You plan to deploy a single Hyper-V failover cluster that uses Cluster Shared Volumes (CSV). The cluster must include virtual machines from both domains. You need to ensure that you can deploy a failover cluster.

What should you do?

- A. Join each Hyper-V host server to the same AD DS domain.
- B. Deploy clustered storage spaces.
- C. Deploy Serial Attached SCSI (SAS).
- D. Join each Hyper-V host server to different AD DS domains.

Correct Answer: A

Ref: <http://technet.microsoft.com/en-us/library/dn505754.aspx> Domain role: All servers in the cluster must be in the same Active Directory domain. As a best practice, all clustered servers should have the same domain role (either member server or domain controller). The recommended role is member server.

QUESTION 5

You have a Windows Server 2012 R2 Hyper-V environment that includes System Center 2012 R2 Virtual Machine Manager (VMM). The environment includes five physical servers. The servers are configured as follows:

Server Name	Operating System	Memory	Disk Volumes
NYC-FS	Windows Server 2012 Datacenter	2048 MB	3 TB
NYC-DEV	Windows Server 2008 R2 Enterprise	1024 MB	1 TB
NYC-EX	Windows Server 2008 Standard 32-bit	4096 MB	4 TB
NYC-PR	Windows Server 2003 Enterprise x64 Service Pack 2	512 MB	500 GB
NYC-WEB	Windows Server 2003 Web Edition	768 MB	200 GB



You plan to use VMM to migrate physical machines to virtual machines. You must migrate all servers that support physical to virtual (P2V) migration.

You need to migrate the servers.



Which three servers should you migrate? Each correct answer presents part of the solution.

- A. NYC-WEB
- B. NYC-PR
- C. NYC-DEV
- D. NYC-FS
- E. NYC-EX

Correct Answer: ABC

The source computer cannot have any volumes larger than 2040 GB. This disqualifies NYC- FS(not D) and NYC-EX (not E).

Note:

* Requirements on the Source Machine

To perform a P2V conversion, your source computer:

/Must have at least 512 MB of RAM.

/ Cannot have any volumes larger than 2040 GB.

/ Must have an Advanced Configuration and Power Interface (ACPI) BIOS Vista WinPE will not install on a non-ACPI BIOS.

/ Must be accessible by VMM and by the host computer.

/ Cannot be in a perimeter network. A perimeter network, which is also known as a screened subnet, is a collection of devices and subnets placed between an intranet and the Internet to help protect the intranet from unauthorized Internet users. The source computer for a P2V conversion can be in any other network topology in which the VMM server can connect to the source machine to temporarily install an agent and can make Windows Management Instrumentation (WMI) calls to the source computer.

QUESTION 6

You have a Windows Server 2012 R2 server with the Hyper-V role installed. The host server hosts a virtual machine (VM) named NYC-VM. The virtual switches for the host server are configured as follows:

Virtual Switch Name	Connection Type
EXT	External
INT	Internal
PRI	Private



NYC-VM must meet the following requirements: communicate with all of the VMs on the same virtualization host server
communicate with the virtualization host server must NOT communicate with VMs on different virtualization host servers



You need to configure the virtual switch for NYC-VM. What should you do?

- A. On NYC-VM, enable virtual LAN identification.
- B. Run the Windows PowerShell command `Connect-VMNetworkAdapter -VMName NYC-VM -SwitchName INT`.
- C. Connect NYC-VM to the EXT switch.
- D. Run the Windows PowerShell command `Connect-VMNetworkAdapter -VMName NYC-VM -SwitchName EXT`.

Correct Answer: A

<http://technet.microsoft.com/en-us/library/cc816585%28v=ws.10%29.aspx>

QUESTION 7

You administer the Hyper-V environment for a company. All virtual machines must use dynamic memory and virtual non-uniform memory access (NUMA) settings that are aligned to the underlying hardware.

One virtual machine is misconfigured.

You need to update the misconfigured virtual machine.

In the Settings dialog box for the virtual machine, which two options should you select?

Hot Area:



Hardware

- Add Hardware
- BIOS
 - Boot from CD
- Memory
 - 2048 MB
- Processor
 - 1 Virtual processor
- IDE Controller 0
 - Hard Drive
 - VM4.vhdx
- IDE Controller 1
 - DVD Drive
 - None
- SCSI Controller
- Network Adapter
 - Control Adapter
- COM 1
 - None
- COM 2
 - None
- Diskette Drive
 - None

Management

- Name
 - VM4
- Integration Services
 - Some services offered

Correct Answer:



The screenshot shows the 'Hardware' configuration window for a virtual machine named 'VM4'. The hardware components are listed as follows:

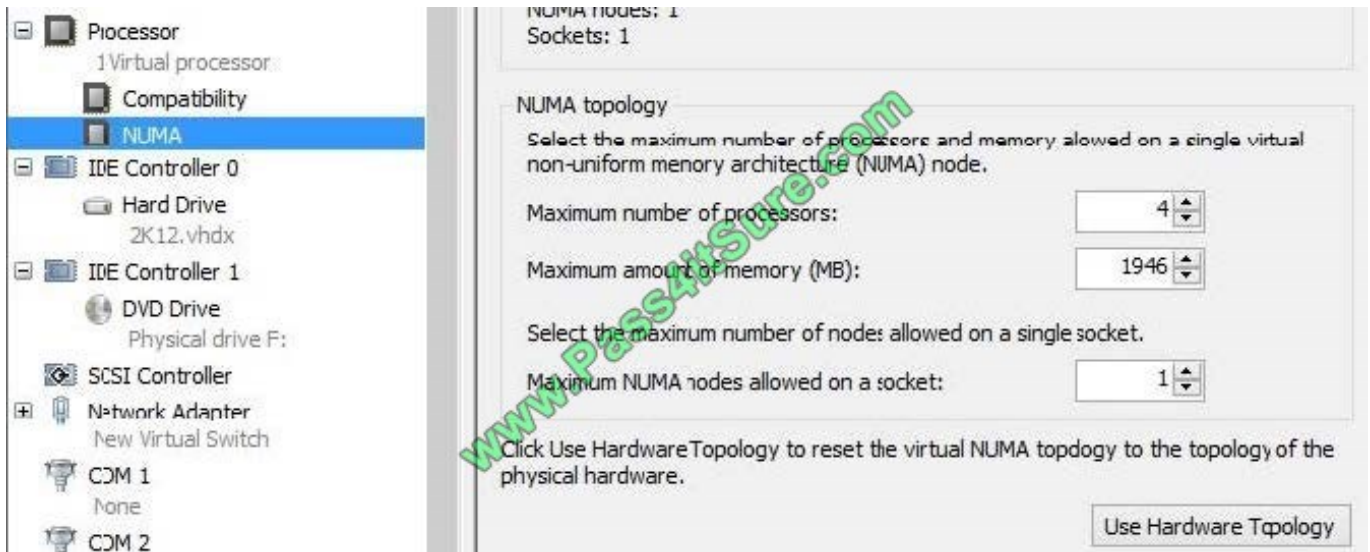
- Add Hardware**
- BIOS**: Boot from CD
- Memory**: 2048 MB
- Processor**: 1 Virtual processor
- IDE Controller 0**:
 - Hard Drive: VM4.vhdx
- IDE Controller 1**:
 - DVD Drive: None
- SCSI Controller**
- Network Adapter**: Controller 0
- COM 1**: None
- COM 2**: None
- Diskette Drive**: None

The 'Management' section is also visible:

- Name**: VM4
- Integrator Services**: Some services offered

The screenshot shows the 'Memory' configuration window for a virtual machine. The left sidebar shows the hardware configuration with 'Memory' selected, showing 1024 MB. The main configuration area is as follows:

- Startup RAM:** 1024 MB
- Dynamic Memory**:
 - You can manage the amount of memory assigned to this virtual machine dynamically within the specified range.
 - Enable Dynamic Memory
 - Minimum RAM:** 512 MB
 - Maximum RAM:** 1048576 MB



QUESTION 8

You administer three Windows Server 2012 R2 servers named Server1, Server2, and Server3. The servers are configured as follows:

Server Name	Role	Location
Server1	Hyper-V	Local data center
Server2	Hyper-V	Windows Azure
Server3	File Services	Windows Azure

Each virtual machine on Server1 has a 50-TB logical unit number (LUN) to store data. There is limited bandwidth between the local data center and Windows Azure. You have the following business continuity requirements:

Virtual machines (VMs) on Server1 must be available within 30 minutes of an unexpected failure.

VMs on Server1 must be available if the local datacenter is no longer available.

You need to configure the environment.

What should you do?

- A. Implement live migration from Server1 to Server2.
- B. Configure the VMs to use a checkpoint location on Server3. Then, create a daily snapshot.
- C. Enable Hyper-V replication between Server1 and Server2.
- D. Implement quick storage migration from Server1 to Server2.

Correct Answer: C

Ref: <http://www.petri.co.il/hyper-v-replica-overview.htm>

**QUESTION 9**

You manage a virtualization environment that contains Windows Server 2012 R2 servers that have the Hyper-V role installed. You manage the host servers by using Virtual Machine Manager (VMM) in System Center 2012 R2.

You must monitor the virtualization environment, including all virtual machines and service instances.

You need to configure monitoring.

Which three actions should you perform? Each correct answer presents part of the solution.

- A. Import the VMM Management Pack and then deploy agents to the Hyper-V host servers and the VMM server. On the Hyper-V host server, enable agent proxy for the Operations Manager agent.
- B. In the VMM console, add the name of an Operations Manager server to the management group that will be used to monitor the virtualization infrastructure.
- C. On the VMM server, install the Operations Manager console.
- D. On the Operations Manager management server, enable Windows Remote Management (WinRM).
- E. Import the VMM Management Pack and then deploy agents to Hyper-V host servers and the VMM Server. On the VMM server, enable agent proxy for the Operations Manager agent.
- F. Configure the VMM server and the Active Directory computer accounts of the Hyper-V host servers to allow constrained delegation.

Correct Answer: ABC

<http://blogs.technet.com/b/kevinholman/archive/2012/08/21/integrating-vmm-2012-and-opsmgr-2012.aspx> Step 1: (C)

The Operations Manager is a requirement.

With System Center Operations Manager 2012 SP1, customers can now monitor Hyper-V Replica using a Management Pack available for free from the SCOM catalogue.

Step 2: (A)

An Operations Manager agent is a service that is installed on a computer. The agent collects data, compares sampled data to predefined values, creates alerts, and runs responses.

A management server receives and distributes configurations to agents on monitored computers.

Step 3: (B)

Enter in one of your management server names to provide the SDK connection to VMM. Next we will need two accounts. One for SCVMM to connect to SCOM, and one for SCOM to connect to SCVMM.

QUESTION 10

You plan to use a Hyper-V host server to host virtual desktops for external customers.

You have the following requirements:

Individual virtual machines (VMs) must be isolated from one another.



VMs must have access to the Internet.

IP addresses should be used in the most efficient manner possible.

The configuration must minimize administrative effort and management complexity.

You need to configure the virtual environment.

What should you do?

- A. Configure a port virtual local area network (PVLAN). Connect all new VMs to the PVLAN.
- B. Configure virtual networking with network isolation. Create a unique VM network for each VM.
- C. Deploy VMs to the same VM network. Enable DHCP Guard and Router Guard network extensions.
- D. Configure a virtual network with no isolation. Deploy VMs to the same VM network. Configure Windows firewall on each VM to prevent the VM from communicating with other VMs on the same VM network.

Correct Answer: A

Explanation: PVLAN can be used to create an environment where VMs may only interact with the Internet and not have visibility into other VMs' network traffic. To accomplish this put all VMs (actually their Hyper-V switch ports) into the same PVLAN in isolated mode. Therefore, using only two VLAN IDs, primary and secondary, all VMs are isolated from each other.

Ref: http://technet.microsoft.com/en-us/library/jj679878.aspx#bkmk_pvlan

QUESTION 11

A company has a Windows Server 2012 R2 server named NYC-HOST1 that has the Hyper-V role installed. The host server hosts two virtual machines named SALES1 and SALES2. NYC-HOST1 uses storage spaces with tiered storage. The storage spaces contain both solid state disks (SSDs) and 10,000 RPM Serial Attached SCSI (SAS) disks for .vhdx files. Each virtual machine runs on its own .vhdx file.

You plan to add new virtual machines each month. SALES1 and SALES2 must run at the highest possible performance at all times. You need to configure the virtual machines.

What should you do?

- A. Add additional SSDs to the storage space that is occupied by SALES1 and SALES2.
- B. Replace the 10,000 RPM SAS disks with 15,000 RPM SAS disks.
- C. Move the .vhdx files from the storage spaces to individual SAS hard disks.
- D. Pin the .vhdx files for SALES1 and SALES2 to the fast tier.

Correct Answer: D

Ref: <http://blogs.technet.com/b/askpfeplat/archive/2013/10/21/storage-spaces-how-to-configure-storage-tiers-with-windows-server-2012-r2.aspx>

**QUESTION 12**

You administer the Hyper-V environment for a large organization. The organization uses Windows Server 2012 R2 servers that have the Hyper-V role installed and System Center 2012 R2 Virtual Machine Manager (VMM). You create a

virtual machine template that has the Operations Manager 2012 R2 agent pre-installed.

You receive the following Operations console alert for all domain controller VMs that use the VM template:

The script \\AD Replication Partner Op Master Consistency\\' Failed to create object. \\McActiveDir.ActiveDirectory\\. This is an unexpected error. The error returned was \\ActiveX component can't create object\\' (OxIAD) The Active Directory

Management Pack Objects (OOMADs) components are not installed on the Domain Controller. These components are required for the monitoring scripts to run successfully. See Alert Knowledge for additional details.

You need to correct the issue for the virtual machines that use the template.

What should you do?

- A. Configure the agent to run as a user account that is a member of the Domain Admins security group.
- B. In the Administration pane on the Operations console, create a Windows Run As Account containing a user account that is a member of the Domain Admins security group. Associate this Run As Account with the AD MP Account Run As Profile.
- C. In the Administration pane on the Operations Console, find the affected agent-managed computers and enable agent proxy.
- D. Install the Active Directory Management Pack helper object on the managed computers.

Correct Answer: D

The Active Directory Management Pack Objects (OOMADs) components are not installed on the Domain Controller. These components are required for the monitoring scripts to run successfully. <http://technet.microsoft.com/en-us/library/cc180617.aspx>

[Latest 74-409 Dumps](#)

[74-409 Practice Test](#)

[74-409 Exam Questions](#)



To Read the [Whole Q&As](#), please purchase the [Complete Version](#) from [Our website](#).

Try our product !

100% Guaranteed Success

100% Money Back Guarantee

365 Days Free Update

Instant Download After Purchase

24x7 Customer Support

Average 99.9% Success Rate

More than 800,000 Satisfied Customers Worldwide

Multi-Platform capabilities - [Windows](#), [Mac](#), [Android](#), [iPhone](#), [iPod](#), [iPad](#), [Kindle](#)

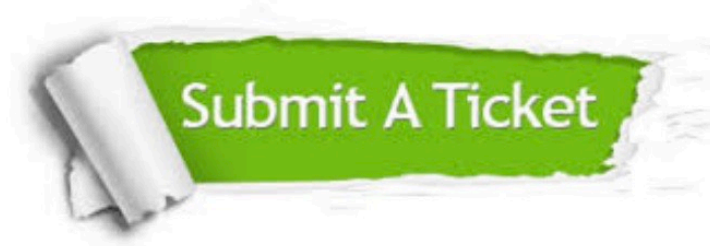
We provide exam PDF and VCE of Cisco, Microsoft, IBM, CompTIA, Oracle and other IT Certifications. You can view Vendor list of All Certification Exams offered:

<https://www.pass4itsure.com/allproducts>

Need Help

Please provide as much detail as possible so we can best assist you.

To update a previously submitted ticket:



 <p>One Year Free Update Free update is available within One Year after your purchase. After One Year, you will get 50% discounts for updating. And we are proud to boast a 24/7 efficient Customer Support system via Email.</p>	 <p>Money Back Guarantee To ensure that you are spending on quality products, we provide 100% money back guarantee for 30 days from the date of purchase.</p>	 <p>Security & Privacy We respect customer privacy. We use McAfee's security service to provide you with utmost security for your personal information & peace of mind.</p>
---	---	--

Any charges made through this site will appear as Global Simulators Limited.

All trademarks are the property of their respective owners.

Copyright © pass4itsure, All Rights Reserved.