



70-742^{Q&As}

Identity with Windows Server 2016

Pass Microsoft 70-742 Exam with 100% Guarantee

Free Download Real Questions & Answers **PDF** and **VCE** file from:

<https://www.pass4itsure.com/70-742.html>

100% Passing Guarantee
100% Money Back Assurance

Following Questions and Answers are all new published by Microsoft
Official Exam Center

- ⚙ **Instant Download** After Purchase
- ⚙ **100% Money Back** Guarantee
- ⚙ **365 Days** Free Update
- ⚙ **800,000+** Satisfied Customers





QUESTION 1

Note: This question is part of a series of questions that present the same scenario. Each question in the series contains a unique solution that might meet the stated goals. Some question sets might have more than one correct solution, while

others might not have a correct solution.

After you answer a question in this section, you will NOT be able to return to it. As a result, these questions will not appear in the review screen.

Your network contains an Active Directory forest named contoso.com.

You need to identify which server is the schema master.

Solution: You open Active Directory Domains and Trusts, right-click Active Directory Domains and Trust in the console tree, and then click Operations Master.

Does this meet the goal?

A. Yes

B. No

Correct Answer: B

You need to use the Schema snap-in to find the schema master. The Schema snap-in is not installed by default but can be installed by using Schmmgmt.dll.

References: https://www.petri.com/determining_fsmo_role_holders

QUESTION 2

Your network contains an Active Directory domain named contoso.com. All the accounts of the users in the sales department are in an organizational unit (OU) named SalesOU.

An application named App1 is deployed to the user accounts in SalesOU by using a Group Policy object (GPO) named Sales GPO.

You need to set the registry value of \HKEY_CURRENT_USER\Software\App1\Collaboration to 0.

Solution: You add a computer preference that has a Create action.

Does this meet the goal?

A. Yes

B. No

Correct Answer: B

**QUESTION 3**

Your network contains an Active Directory domain named contoso.com. All the accounts of the users in the sales department are in an organizational unit (OU) named SalesOU.

An application named App1 is deployed to the user accounts in SalesOU by using a Group Policy object (GPO) named Sales GPO.

You need to set the registry value of \HKEY_CURRENT_USER\Software\App1\Collaboration to 0.

Solution: You add a user preference that has an Update action.

Does this meet the goal?

A. Yes

B. No

Correct Answer: A

QUESTION 4**HOTSPOT**

Your network contains an Active Directory domain named contoso.com. The domain contains a read-only domain controller (RODC) named RODC1.

The domain contains the users shown in the following table.

Name	Member of
User1	Group1
User2	Group2
User3	Group1 and Group2

Group1 is a member of the Backup Operators group.

RODC1 has a Password Replication Policy configured as shown in the exhibit. (Click the Exhibit button.)

Exhibit:



RODC1 Properties

General	Operating System	Member Of	Delegation
Password Replication Policy	Location	Managed By	Dial-in

This is a Read-only Domain Controller (RODC). An RODC stores users and computers passwords according to the policy below. Only passwords for accounts that are in the Allow groups and not in the Deny groups can be replicated to the RODC.

Groups, users and computers:

Name	Setting
Account Operators	Deny
Administrators	Deny
Allowed RODC Password Replication Group	Allow
Backup Operators	Deny
Denied RODC Password Replication Group	Deny
Group1	Allow
Group2	Allow
Server Operators	Deny
User1	Allow
User3	Deny

[Advanced...](#) [Add...](#) [Remove](#)

[OK](#) [Cancel](#) [Apply](#) [Help](#)

For each of the following statements, select Yes if the statement is true. Otherwise, select No. NOTE: Each correct selection is worth one point.

Hot Area:

**Answer Area**

Statements	Yes	No
After User1 is authenticated by RODC1, the password will be cached on RODC1	<input type="checkbox"/>	<input type="checkbox"/>
After User2 is authenticated by RODC1, the password will be cached on RODC1	<input type="checkbox"/>	<input type="checkbox"/>
After User3 is authenticated by RODC1, the password will be cached on RODC1	<input type="checkbox"/>	<input type="checkbox"/>

Correct Answer:

Answer Area

Statements	Yes	No
After User1 is authenticated by RODC1, the password will be cached on RODC1	<input checked="" type="checkbox"/>	<input type="checkbox"/>
After User2 is authenticated by RODC1, the password will be cached on RODC1	<input checked="" type="checkbox"/>	<input type="checkbox"/>
After User3 is authenticated by RODC1, the password will be cached on RODC1	<input type="checkbox"/>	<input checked="" type="checkbox"/>

QUESTION 5**DRAG DROP**

Your network contains an Active Directory domain named contoso.com. The domain contains a domain controller named DC1.

You create and link a Group Policy object (GPO) named SalesAppGPO to an organizational unit (OU) named SalesOU. All the computer accounts are in the Computers container. All the user accounts of the users in the sales department are

in SalesOU. You have a line-of-business application named SalesApp that is installed by using a Windows Installer package.

You need to make SalesApp available to only the sales department users.

Which three actions should you perform in sequence? To answer move the appropriate actions from the list of actions to the answer area and arrange them in the correct order.

Select and Place:



Actions

On DC1, create a WebDAV folder named SalesApp.

Copy the Windows Installer package to SalesApp.

In GPO1, add a package to Computer Configuration\Policies\Software Settings\Software installation.

On DC1, create a shared folder named SalesApp.

In GPO1, add a package to User Configuration\Policies\Software Settings\Software installation.

In GPO1, create a software restriction policy in Computer Configuration\Policies\Windows Settings\Security Settings.

In GPO1, create a software restriction policy in User Configuration\Policies\Windows Settings\Security Settings.

Answer Area

Three empty text input boxes for the answer.



Correct Answer:



Actions

On DC1, create a WebDAV folder named SalesApp.

In GPO1, add a package to User Configuration\Policies\Software Settings\Software installation.

In GPO1, create a software restriction policy in Computer Configuration\Policies\Windows Settings\Security Settings.

In GPO1, create a software restriction policy in User Configuration\Policies\Windows Settings\Security Settings.

Answer Area

On DC1, create a shared folder named SalesApp.

Copy the Windows Installer package to SalesApp.

In GPO1, add a package to Computer Configuration\Policies\Software Settings\Software installation.



QUESTION 6

Note: This question is part of a series of questions that present the same scenario. Each question in the series contains a unique solution that might meet the stated goals. Some question sets might have more than one correct solution, while

others might not have a correct solution.

After you answer a question in this section, you will NOT be able to return to it. As a result, these questions will not appear in the review screen.

Your network contains an Active Directory domain named contoso.com.

The user account for a user named User1 is in an organizational unit (OU) named OU1.

You need to enable User1 to sign in as user1@adatum.com.

Solution: From Windows PowerShell, you run

```
Set-ADObject \"CN=User1,OU=OU1,DC=Contoso,DC=com\"
```

```
-Add @{UserPrincipalName=\"User1@Adatum.com\"}
```

```
-Remove @{UserPrincipalName=\"User1@Contoso.com\"}.
```



Does this meet the goal?

A. Yes

B. No

Correct Answer: B

QUESTION 7

Note: This question is part of a series of questions that present the same scenario. Each question in the series contains a unique solution that might meet the stated goals. Some question sets might have more than one correct solution, while

others might not have a correct solution.

After you answer a question in this section, you will NOT be able to return to it. As a result, these questions will not appear in the review screen.

Your network contains an Active Directory forest. The forest contains a domain named contoso.com. The domain contains three domain controllers.

A domain controller named lon-dc1 fails. You are unable to repair lon-dc1.

You need to prevent the other domain controllers from attempting to replicate to lon-dc1.

Solution: From ntdsutil.exe, you perform a metadata cleanup.

Does this meet the goal?

A. Yes

B. No

Correct Answer: A

QUESTION 8

Note: This question is part of a series of questions that present the same scenario. Each question in the series contains a unique solution that might meet the stated goals. Some question sets might have more than one correct solution, while

others might not have a correct solution.

After you answer a question in this section, you will NOT be able to return to it. As a result, these questions will not appear in the review screen.

Your network contains an Active Directory forest named contoso.com. The forest contains an Active Directory Rights Management Services (AD RMS) deployment.

Your company establishes a partnership with another company named Fabrikam, Inc. The network of Fabrikam



contains an Active Directory forest named fabrikam.com and an AD RMS deployment.

You need to ensure that the users in contoso.com can access rights protected documents sent by the users in fabrikam.com.

Solution: From AD RMS in contoso.com, you configure fabrikam.com as a trusted publisher domain.

Does this meet the goal?

A. Yes

B. No

Correct Answer: A

By default, an AD RMS Licensing Server can issue use licenses for only content where it originally issued the publishing license. In some situations, this may not be acceptable. In order to specify a cluster that is allowed to issue use licenses for content protected by a different cluster, the first cluster must be defined as a trusted publishing domain. If content was published by another certification cluster either in your organization, for example, a subsidiary organization in another forest, or in a separate organization, your AD RMS cluster can grant use licenses to users for this content by configuring a Trusted Publishing Domain on your AD RMS cluster. By adding a Trusted Publishing Domain, you set up a trust relationship between your AD RMS cluster and the other certification cluster by importing the Trusted Publishing Certificate of the other cluster.

References: <https://books.google.co.za/books?id=gjR-BAAAQBAJandpg=PA397andlpg=PA397anddq=configure+a+partners+forest+as+a+trusted+publishing+domain+-+AD+RMSandsource=blandots=mohQXTyW9sandsig=NJ7oFHuLYOs72o9EMyQilscUW8andhl=enandsa=Xandved=0ahUKEwjuiW24sPbAhWGRMAKHQcEB6EQ6AEIOzAD#v=onepageandq=configure%20a%20partners%20forest%20as%20a%20trusted%20publishing%20domain%20-%20AD%20RMSandf=false>

QUESTION 9

Your network contains an Active Directory domain named contoso.com. The domain contains a server named Server1 that runs Windows Server 2016.

On Server1, you create a local user named User1. User1 is a member of the local Administrators group.

Server1 has the following local Group Policies:

Local Computer Policy Local Computer\User1 Policy Local Computer\Administrators Policy

You need to force user1 to change his password every 14 days. Solution: You create a Password Settings object (PSO) in the domain. Does this meet the goal?

A. Yes

B. No

Correct Answer: B

QUESTION 10

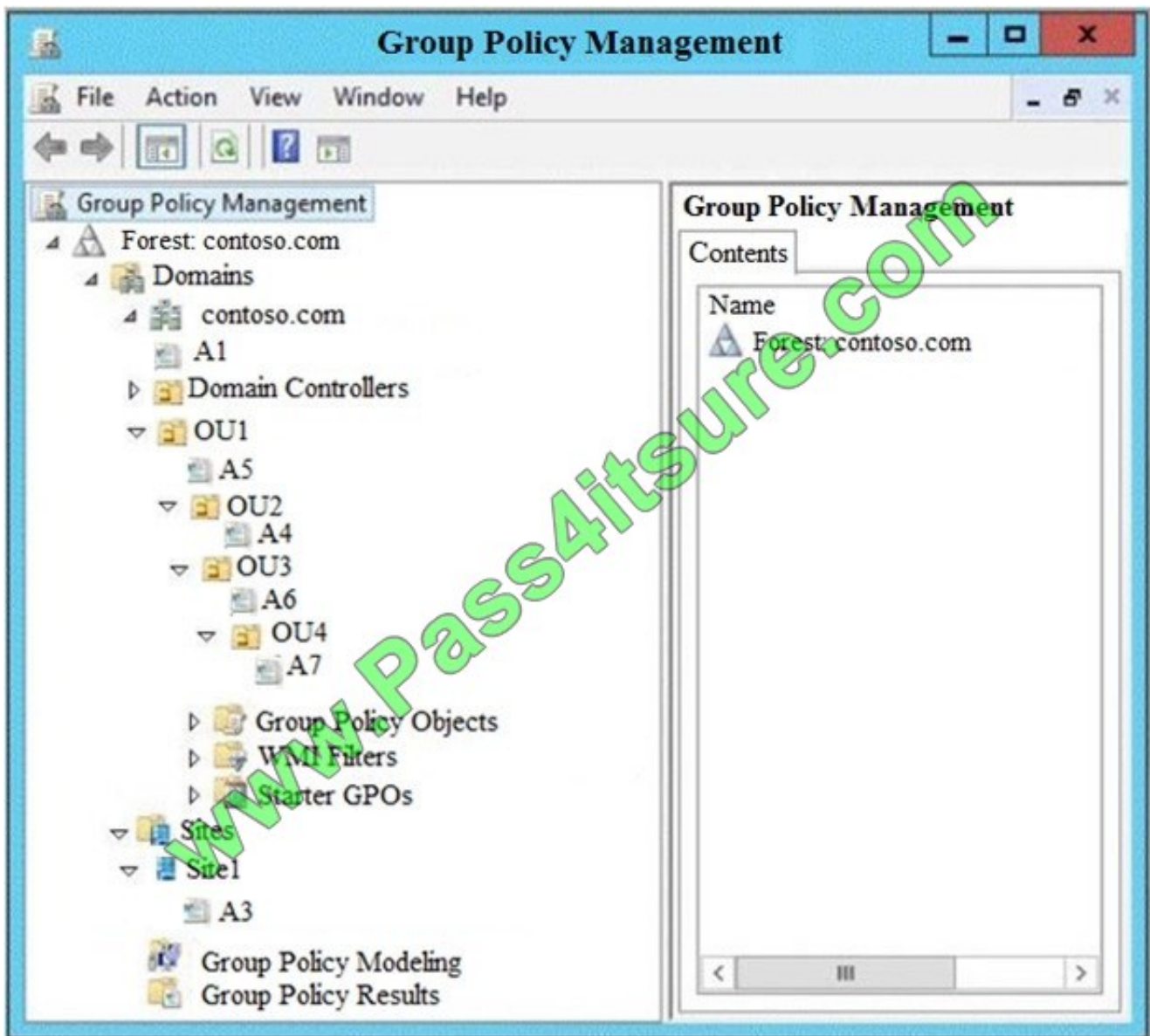


Note: This question is part of a series of questions that use the same scenario. For your convenience, the scenario is repeated in each question. Each question presents a different goal and answer choices, but the text of the scenario is exactly the same in each question in this series.

Start of repeated scenario.

Your network contains an Active Directory domain named contoso.com. The domain contains a single site named Site1. All computers are in Site1.

The Group Policy objects (GPOs) for the domain are configured as shown in the exhibit. (Click the Exhibit button.)



The relevant users and client computer in the domain are configured as shown in the following table.



Object name	Object type	Object location
Computer	Computer	OU4
User1	User	OU4
User2	User	OU2

End of repeated scenario.

You are evaluating what will occur when you set user Group Policy loopback processing mode to Replace in A4.

Which GPO or GPOs will apply to User2 when the user signs in to Computer1 after loopback processing is configured?

- A. A1, A5, A6 and A4
- B. A3, A1, A4, and A7
- C. A3, A1, A5 and A4
- D. A4 only

Correct Answer: D

QUESTION 11

Your company has a main office and three branch offices. The network contains an Active Directory domain named contoso.com.

The main office contains three domain controllers. Each branch office contains one domain controller.

You discover the new settings in the Default Domain Policy are not applied in one of the branch offices, but all other Group Policy objects (GPOs) are applied.

You need to check the replication of the Default Domain Policy for the branch office.

What should you do from a domain controller in the main office?

- A. From Group Policy Management, click Default Domain Policy under Contoso.com, and then open the Scope tab.
- B. From a command prompt, run dcdiag.exe.
- C. From a command prompt, run repadmin.exe.
- D. From Windows PowerShell, run the Get-GPReport cmdlet.

Correct Answer: C

QUESTION 12



Note: This question is part of a series of questions that use the same or similar answer choices. An answer choice may be correct for more than one question in the series. Each question is independent of the other questions in this series.

Information and details provided in a question apply only to that question.

Your network contains an Active Directory domain named contoso.com. The domain contains 5,000 user accounts.

You have a Group Policy object (GPO) named DomainPolicy that is linked to the domain and a GPO named DCPolicy that is linked to the Domain Controllers organizational unit (OU).

You need to ensure that the members of the Backup Operators group can back up domain controllers.

What should you do?

- A. From the Computer Configuration node of DCPolicy, modify Security Settings.
- B. From the Computer Configuration node of DomainPolicy, modify Security Settings.
- C. From the Computer Configuration node of DomainPolicy, modify Administrative Templates.
- D. From the User Configuration node of DCPolicy, modify Security Settings.
- E. From the User Configuration node of DomainPolicy, modify Folder Redirection.
- F. From user Configuration node of DomainPolicy, modify Administrative Templates.
- G. From Preferences in the User Configuration node of DomainPolicy, modify Windows Settings.
- H. From Preferences in the Computer Configuration node of DomainPolicy, modify Windows Settings.

Correct Answer: D

QUESTION 13

Note: This question is part of a series of questions that present the same scenario. Each question in the series contains a unique solution that might meet the stated goals. Some question sets might have more than one correct solution, while

others might not have a correct solution.

After you answer a question in this section, you will NOT be able to return to it. As a result, these questions will not appear in the review screen.

Your network contains an Active Directory domain.

You have a user account that is a member of the Domain Admins group.

You have 100 laptops that have a standard corporate image installed. The laptops are in workgroups and have random names.

A technician named Tech1 is assigned the task of joining the laptops to the domain. The computer accounts of each laptop must be in an organizational unit (OU) that is associated to the department of the user who will use the laptop. The

laptop names must start with four characters indicating the department, followed by a four-digit number.



Tech1 is a member of the Domain Users group only. Tech1 has the administrator logon credentials for all the laptops.

You need Tech1 to join the laptops to the domain. The solution must ensure that the laptops are named correctly, and the computer accounts of the laptops are in the correct OUs.

Solution: You instruct Tech1 to sign in to each laptop, to rename each laptop by using System in Control Panel, and then to join each laptop to the domain by using the Netdom join command.

Does this meet the goal?

A. Yes

B. No

Correct Answer: A

QUESTION 14

Your network contains an Active Directory domain named contoso.com. The domain contains a user named User1, a group named Group1, and an organizational unit (OU) named OU1.

You need to enable user1 to link Group Policies to OU1.

Solution: From Active Directory Users and Computers, you add User1 to the Group Policy Creator owners group.

Does this meet the goal?

A. Yes

B. No

Correct Answer: B

References: <http://www.itprotoday.com/management-mobility/what-group-policy-creator-owners-group>

QUESTION 15

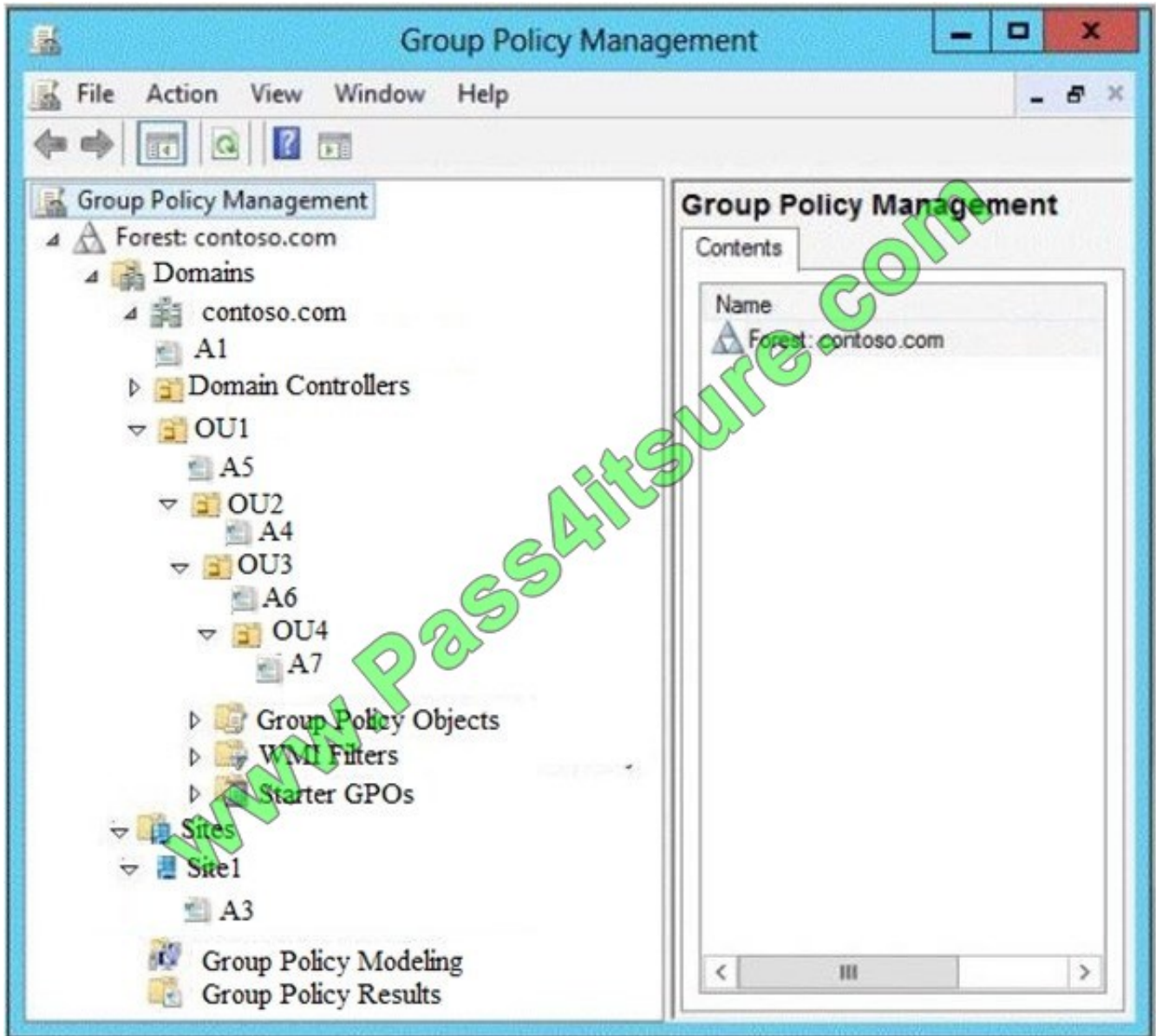
Note: This question is part of a series of questions that use the same scenario. For your convenience, the scenario is repeated in each question. Each question presents a different goal and answer choices, but the text of the scenario is

exactly the same in each question in this series.

Start of repeated scenario.

Your network contains an Active Directory domain named contoso.com. The domain contains a single site named Site1. All computers are in Site1.

The Group Policy objects (GPOs) for the domain are configured as shown in the exhibit. (Click the Exhibit button.)



The relevant users and client computer in the domain are configured as shown in the following table.

Object name	Object type	Object location
Computer	Computer	OU4
User1	User	OU4
User2	User	OU2

End of repeated scenario.

You are evaluating what will occur when you set user Group Policy loopback processing mode to Replace in A7.



Which GPO or GPOs will apply to User2 when the user signs in to Computer1 after loopback processing is configured?

- A. A1 and A7 only
- B. A3, A1, A5, A6 and A7
- C. A3, A5, A1, and A7 only
- D. A7 only

Correct Answer: D

In Replace Mode, the user's list of GPOs is not gathered. Only the list of GPOs based on the computer object is used.

References: <https://support.microsoft.com/en-us/help/231287/loopback-processing-of-group-policy>

[Latest 70-742 Dumps](#)

[70-742 Study Guide](#)

[70-742 Exam Questions](#)



To Read the [Whole Q&As](#), please purchase the [Complete Version](#) from [Our website](#).

Try our product !

100% Guaranteed Success

100% Money Back Guarantee

365 Days Free Update

Instant Download After Purchase

24x7 Customer Support

Average 99.9% Success Rate

More than 800,000 Satisfied Customers Worldwide

Multi-Platform capabilities - [Windows](#), [Mac](#), [Android](#), [iPhone](#), [iPod](#), [iPad](#), [Kindle](#)

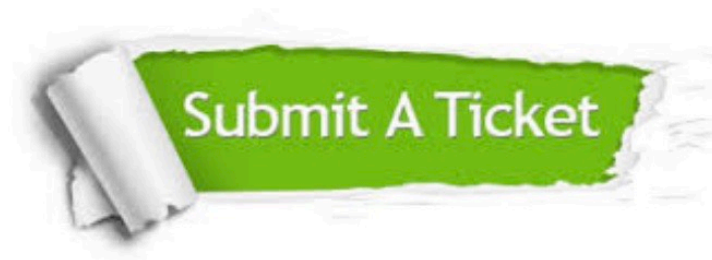
We provide exam PDF and VCE of Cisco, Microsoft, IBM, CompTIA, Oracle and other IT Certifications. You can view Vendor list of All Certification Exams offered:

<https://www.pass4itsure.com/allproducts>

Need Help

Please provide as much detail as possible so we can best assist you.

To update a previously submitted ticket:



 One Year Free Update <p>Free update is available within One Year after your purchase. After One Year, you will get 50% discounts for updating. And we are proud to boast a 24/7 efficient Customer Support system via Email.</p>	 Money Back Guarantee <p>To ensure that you are spending on quality products, we provide 100% money back guarantee for 30 days from the date of purchase.</p>	 Security & Privacy <p>We respect customer privacy. We use McAfee's security service to provide you with utmost security for your personal information & peace of mind.</p>
---	---	--

Any charges made through this site will appear as Global Simulators Limited.

All trademarks are the property of their respective owners.

Copyright © pass4itsure, All Rights Reserved.