



70-735^{Q&As}

OEM Manufacturing and Deployment for Windows 10

Pass Microsoft 70-735 Exam with 100% Guarantee

Free Download Real Questions & Answers **PDF** and **VCE** file from:

<https://www.pass4itsure.com/70-735.html>

100% Passing Guarantee
100% Money Back Assurance

Following Questions and Answers are all new published by Microsoft
Official Exam Center

- ⚙ **Instant Download** After Purchase
- ⚙ **100% Money Back** Guarantee
- ⚙ **365 Days** Free Update
- ⚙ **800,000+** Satisfied Customers



**QUESTION 1**

Note: This question is part of a series of questions that use the same or similar answer choices. An answer choice may be correct for more than one question in the series. Each question is independent of the other questions in this series.

Information and details provided in a question apply only to that question.

You install Windows 10 on several devices.

You need to add a trusted root certificate to the devices. You must achieve the goal without reinstalling Windows 10.

What should you do?

- A. Mount the Install.wim file.
- B. Mount the Boot.wim file.
- C. Modify the Winpeshl.ini file.
- D. Create an answer file.
- E. Modify the Windows.ini file.
- F. Create a provisioning package.
- G. Load a catalog file (.clg).
- H. Create a cabinet file (.cab).

Correct Answer: F

QUESTION 2

Note: This question is part of a series of questions that use the same or similar answer choices. An answer choice may be correct for more than one question in the series. Each question is independent of the other questions in this series.

Information and details provided in a question apply only to that question.

You have a computer named Computer1 that runs Windows 10. Computer1 has the Windows Assessment and Deployment Kit (Windows ADK) installed.

You are building a new image of Windows 10.

You have several pictures that you plan to make available as desktop backgrounds.

You copy the installation media for Windows 10 to Computer1.

You need to ensure that the Windows 10 image contains the desktop backgrounds.

What should you do first?

- A. Mount the Install.wim file.



- B. Mount the Boot.wim file.
- C. Modify the Winpeshl.ini file.
- D. Create an answer file.
- E. Modify the Windows.ini file.
- F. Create a provisioning package.
- G. Load a catalog file (.clg).
- H. Create a cabinet file (.cab).

Correct Answer: A

QUESTION 3

You plan to create an image of Windows 10 that contains a push-button reset solution. The solution will have custom settings for each edition of Windows 10.

You need to prepare the push-button reset solution.

What should you include in the solution?

- A. an unattended file and a bare metal recovery configuration
- B. an unattended file and extensibility scripts
- C. extensibility scripts and system restore points
- D. a bare metal recovery configuration and Scanstate packages

Correct Answer: B

References: <https://docs.microsoft.com/en-us/windows-hardware/manufacture/desktop/add-a-script-to-push-button-reset-features>

QUESTION 4

You deploy an image of Windows 10.

From audit mode, you install several applications for a customer, and then you run sysprep.exe/oobe/quit.

You need to identify whether any errors occurred when you ran sysprep.exe.

Which folder contains the log files?

- A. %WINDIR%\Logs
- B. %WINDIR%\System32\LogFiles
- C. %WINDIR%\Panther\



D. %WINDIR%\System32\Sysprep\Panther

Correct Answer: C

QUESTION 5

You have an image of Windows 10.

You discover that files in the Windows Component Store are corrupt.

You need to repair the files in the component store.

What should you do?

- A. Run dism.exe and specify the /Cleanup-Image and the /RestoreHealth parameters.
- B. Run dism.exe and specify the /Cleanup-Image and the /StartComponentCleanup parameters.
- C. Run sfc.exe and specify the /scanfile and /offwindir parameters.
- D. Run sfc.exe and specify the /scannow parameter.

Correct Answer: A

QUESTION 6

Note: This question is part of a series of questions that present the same scenario. Each question in the series contains a unique solution that might meet the stated goals. Some question sets might have more than one correct solution, while

others might not have a correct solution.

After you answer a question in this sections, you will NOT be able to return to it. As a result, these questions will not appear in the review screen.

You mount an image of Windows 10.

You download 10 Windows 10 update packages to separate folders. Some of the update packages contain dependencies to the other update packages. You are unaware of the specific dependencies.

You need to add all the update packages to the image in the correct order.

Solution: You run dism.exe/Get-Packages, and then you pipe the output to dism.exe/Add-Package.

Does this meet the goal?

- A. Yes
- B. No

Correct Answer: B

References: <https://docs.microsoft.com/en-us/windows-hardware/manufacture/desktop/add-or-remove-packages-offline->



using-dism

QUESTION 7

Note: This question is part of a series of questions that use the same or similar answer choices. An answer choice may be correct for more than one question in the series. Each question is independent of the other questions in this series.

Information and details provided in a question apply only to that question.

You have a computer named Computer1 that runs Windows 10. Computer1 has the Windows Assessment and Deployment Kit (Windows ADK) installed.

You create the working directories for the customization of a Windows Preinstallation Environment (Windows PE) image.

You need to modify the regional setting used in Windows PE.

What should you do first?

- A. Mount the Install.wim file.
- B. Mount the Boot.wim file.
- C. Modify the Winpeshl.ini file.
- D. Create an answer file.
- E. Modify the Windows.ini file.
- F. Create a provisioning package.
- G. Load a catalog file (.clg).
- H. Create a cabinet file (.cab).

Correct Answer: B

References: <https://docs.microsoft.com/en-us/windows-hardware/manufacture/desktop/winpe-add-packages--optional-components-reference>

QUESTION 8

Note: This question is part of a series of questions that present the same scenario. Each question in the series contains a unique solution that might meet the stated goals. Some question sets might have more than one correct solution, while

others might not have a correct solution.

After you answer a question in this sections, you will NOT be able to return to it. As a result, these questions will not appear in the review screen.

You mount an image of Windows 10.



You download 10 Windows 10 update packages to separate folders. Some of the update packages contain dependencies to the other update packages. You are unaware of the specific dependencies.

You need to add all the update packages to the image in the correct order.

Solution: You copy all the updates to the same folder. You run `dism.exe/Add-Package` once and specify the `/PackagePath` parameter once.

Does this meet the goal?

A. Yes

B. No

Correct Answer: B

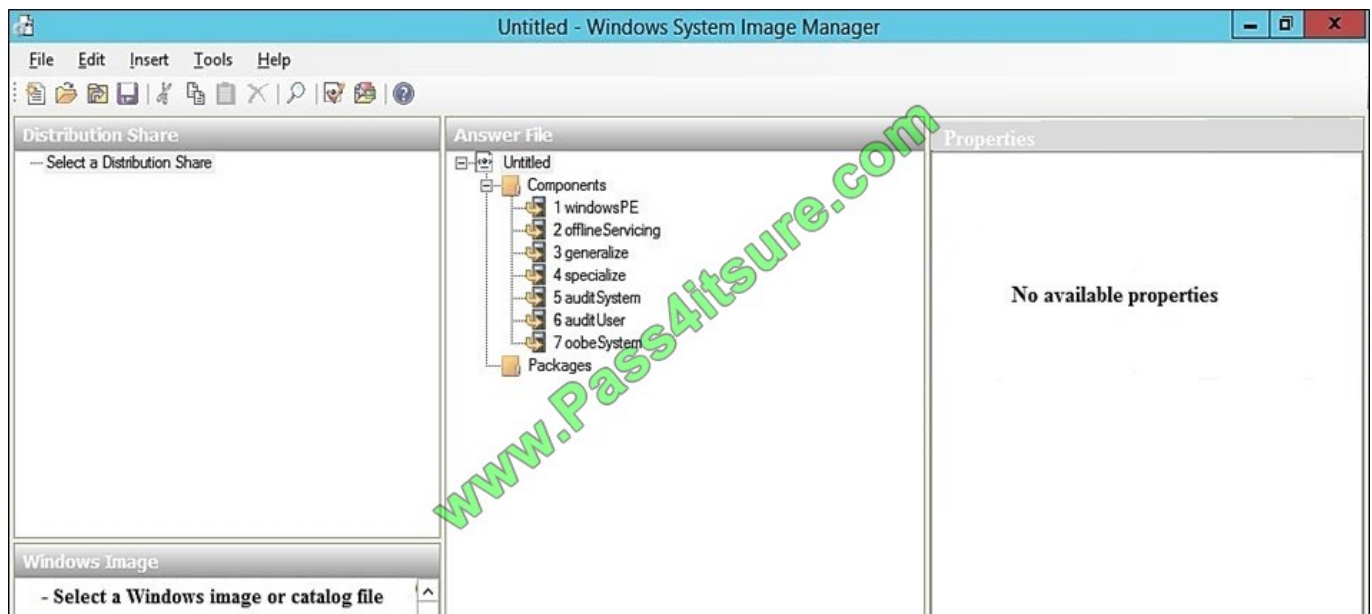
References: <https://docs.microsoft.com/en-us/windows-hardware/manufacture/desktop/add-or-remove-packages-offline-using-dism>

QUESTION 9

You have a computer named Computer1 that runs Windows 10.

On Computer1, you have a DVD that contains the installation source files of Windows 10 Pro.

You open Windows System Image Manager as shown in the exhibit. (Click the Exhibit tab.)



You need to configure the answer file for Windows 10 by using Windows System Image Manager (Windows SIM). What should you do first?

A. Copy the installation files for Windows 10 to a hard disk.

B. Create a catalog file (.clg).

C. Select a distribution share.



D. Select an image of Windows 10.

Correct Answer: A

References: [https://technet.microsoft.com/en-us/library/cc749317\(v=ws.10\).aspx](https://technet.microsoft.com/en-us/library/cc749317(v=ws.10).aspx)

QUESTION 10

Note: This question is part of a series of questions that present the same scenario. Each question in the series contains a unique solution that might meet the stated goals. Some question sets might have more than one correct solution, while

others might not have a correct solution.

After you answer a question in this sections, you will NOT be able to return to it. As a result, these questions will not appear in the review screen.

You are building a new image of Windows 10 that contains a push-button reset solution.

You need to test whether push-button reset works as expected.

Solution: From Windows 10, you open the Settings app, you click Update and security, and then you click Recovery. From Reset this PC, you click Get Started.

Does this meet the goal?

A. Yes

B. No

Correct Answer: A

References: <https://support.microsoft.com/en-us/help/12415/windows-10-recovery-options> <https://docs.microsoft.com/en-us/windows-hardware/manufacture/desktop/push-button-reset-overview>

QUESTION 11

You have a computer that runs Windows 10. The computer starts in UEFI mode and has a 64-bit processor.

You insert a USB key in the computer. The USB key has a drive letter of F.

You need to ensure that you can start the computer by using Windows Preinstallation Environment (Windows PE) from the USB key.

Which two commands should you run? Each correct answer presents part of the solution.

NOTE: Each correct selection is worth one point.

A. `makewinpemedia.cmd /UFD C:\WinPe F:`

B. `makewinpemedia.cmd /ISO C:\WinPe F:`

C. `copype.cmd amd64 C:\WinPe`



D. `dism.exe /Export-Image /SourceImageFile:C:\WinPE\boot.wim/SourceIndex:1/DestinationImageFile:F:\boot.wim`

E. `copype.cmd x86 C:\WinPe`

Correct Answer: AE

References: <https://docs.microsoft.com/en-us/windows-hardware/manufacture/desktop/winpe-create-usb-bootable-drive>

QUESTION 12

Note: This question is part of a series of questions that present the same scenario. Each question in the series contains a unique solution that might meet the stated goals. Some question sets might have more than one correct solution, while

others might not have a correct solution.

After you answer a question in this sections, you will NOT be able to return to it. As a result, these questions will not appear in the review screen.

You are configuring a reference computer for a new UEFI-based deployment image of the 64-bit version of Windows 10. The reference computer has two physical hard disk drives.

You need to configure a partition on Disk 0 to support a recovery partition.

Solution: You create an EFI system partition of 150 MB that uses the NTFS file system.

Does this meet the goal?

A. Yes

B. No

Correct Answer: B

References: <https://docs.microsoft.com/en-us/windows-hardware/manufacture/desktop/configure-uefigpt-based-hard-drive-partitions>

[Latest 70-735 Dumps](#)

[70-735 Study Guide](#)

[70-735 Braindumps](#)



To Read the [Whole Q&As](#), please purchase the [Complete Version](#) from [Our website](#).

Try our product !

100% Guaranteed Success

100% Money Back Guarantee

365 Days Free Update

Instant Download After Purchase

24x7 Customer Support

Average 99.9% Success Rate

More than 800,000 Satisfied Customers Worldwide

Multi-Platform capabilities - [Windows](#), [Mac](#), [Android](#), [iPhone](#), [iPod](#), [iPad](#), [Kindle](#)

We provide exam PDF and VCE of Cisco, Microsoft, IBM, CompTIA, Oracle and other IT Certifications. You can view Vendor list of All Certification Exams offered:

<https://www.pass4itsure.com/allproducts>

Need Help

Please provide as much detail as possible so we can best assist you.

To update a previously submitted ticket:



 One Year Free Update <p>Free update is available within One Year after your purchase. After One Year, you will get 50% discounts for updating. And we are proud to boast a 24/7 efficient Customer Support system via Email.</p>	 Money Back Guarantee <p>To ensure that you are spending on quality products, we provide 100% money back guarantee for 30 days from the date of purchase.</p>	 Security & Privacy <p>We respect customer privacy. We use McAfee's security service to provide you with utmost security for your personal information & peace of mind.</p>
---	---	--

Any charges made through this site will appear as Global Simulators Limited.

All trademarks are the property of their respective owners.

Copyright © pass4itsure, All Rights Reserved.