



70-688^{Q&As}

Supporting Windows 8.1

Pass Microsoft 70-688 Exam with 100% Guarantee

Free Download Real Questions & Answers **PDF** and **VCE** file from:

<https://www.pass4itsure.com/70-688.html>

100% Passing Guarantee
100% Money Back Assurance

Following Questions and Answers are all new published by Microsoft
Official Exam Center

-  **Instant Download** After Purchase
-  **100% Money Back** Guarantee
-  **365 Days** Free Update
-  **800,000+** Satisfied Customers



**QUESTION 1**

You support computers that run Windows 8 Enterprise. Your company protects all laptops by using the BitLocker Network Unlock feature. Some employees work from home.

You need to ensure that employees can log on to their laptops when they work from home. What should you do?

- A. Provide employees their BitLocker PINs.
- B. Ensure that the Trusted Platform Module (TPM) chips in the laptops are version 1.2 or greater.
- C. Enable BitLocker To Go.
- D. Have users run the `Manage-bde.exe -unlock` command before they disconnect from the company network.

Correct Answer: A

In addition to the option of creating a startup key, you have the option of creating a startup personal identification number (PIN). You can create either the startup key or the startup PIN, but not both. The startup PIN can be any number that you choose from 4 to 20 digits in length. The PIN is stored on your computer. You will have to type the PIN each time you start the computer. Reference: <http://windows.microsoft.com/en-US/windows-vista/What-is-a-BitLocker-Drive-Encryption-startup-key-or-PIN> <http://support.microsoft.com/kb/2855131>

QUESTION 2

You support desktop computers and tablets that run Windows 8 Enterprise. All of the computers are able to connect to your company network from the Internet by using DirectAccess.

Your company wants to deploy a new application. The deployment solution must meet the following requirements:

The application does not utilize the company server infrastructure. The application is isolated from other applications. The application uses the least amount of disk space possible on a solid-state drive (SSD) on the tablets.

The application utilizes the least amount of network bandwidth. You need to deploy the new application to the tablets.

What should you do?

- A. Deploy the application as an Application Virtualization (App-V) package. Install the App-V 4.6 client on the tablets.
- B. Deploy the application as a published application on the Remote Desktop server. Create a Remote Desktop connection on the tablets.
- C. Install the application on a local drive on the tablets.
- D. Install the application in a Windows To Go workspace.
- E. Install Hyper-V on tablets. Install the application on a virtual machine.
- F. Publish the application to Windows Store.
- G. Install the application within a separate Windows 8 installation in a virtual hard disk (VHD) file. Configure the tablets with dual boot.



H. Install the application within a separate Windows 8 installation in a VHDX file. Configure tablets with dual boot.

Correct Answer: D

Explanation: Using Windows To Go

Windows To Go is not a late-night drive-through offering at the local Microsoft Store. Rather, it's a feature in the Windows 8 Enterprise operating system that allows you to start a Windows 8 image (a Windows To Go workspace) from an

external USB drive. You can start a Windows To Go workspace on most computers that meet the Windows 7 or Windows 8 certification requirements, regardless of the operating system currently running on them.

Reference:

<http://technet.microsoft.com/en-us/windows/jj874386.aspx>

QUESTION 3

You manage a client Windows 8.1 computer named Computer1. The computer has the SkyDrive desktop application installed.

You have a SkyDrive synchronized folder that contains .pdf files.

You need to ensure that you can restore previous versions of the .pdf files.

What should you do?

- A. Enable File History.
- B. Configure Computer1 as a trusted PC.
- C. Enable Sync your settings on Computer1.
- D. Configure System Restore.

Correct Answer: A

Explanation: File History regularly backs up versions of your files in the Documents, Music, Pictures, Videos, and Desktop folders and the OneDrive files available offline on your PC. Over time, you'll have a complete history of your files. If the originals are lost, damaged, or deleted, you can restore them. You can also browse and restore different versions of your files. For example, if you want to restore an older version of a file (even if it wasn't deleted or lost), you can browse through a timeline, select the version you want, and restore it. <http://windows.microsoft.com/en-US/windows-8/how-use-file-history>

QUESTION 4

You support Windows 8.1 desktop computers and tablets that are members of an Active Directory domain. The domain includes Active Directory Certificate Services. All users use virtual smart cards to log on to their computers.

A domain user wants to log on to both his desktop computer and his tablet computer by using the same domain user account.



You need to configure the desktop and tablet computers to support two-factor authentication for the same domain user account.

What should you do?

- A. Enroll the user for two separate certificates based on the Smartcard Logon template. Install one certificate in a virtual smart card on each of the user's computers.
- B. Export the private key from the desktop computer. Import the private key to the tablet.
- C. After the user has logged on to one computer, disable the Trusted Platform Module (TPM) on the second computer. Run the tpmvscmgr.exe utility on each of the computers.
- D. Issue a temporary physical smart card. Use this smart card for an initial logon on each computer, then disconnect the tablet from the office network and destroy the temporary smart card.

Correct Answer: D

Explanation: Using one-time password for enrollment One option to ensure that users are strongly authenticated before virtual smart card certificates are issued is to send a user a one-time password through SMS, email, or phone. The user then types the one-time password during the certificate enrollment from an application or a script on a desktop that invokes built-in command-line tools.

Note:

*

Virtual smart card technology from Microsoft offers comparable security benefits to physical smart cards by using two-factor authentication. Virtual smart cards emulate the functionality of physical smart cards, but they use the Trusted Platform Module (TPM) chip that is available on computers in many organizations, rather than requiring the use of a separate physical smart card and reader. Virtual smart cards are created in the TPM, where the keys that are used for authentication are stored in cryptographically secured hardware.

*

Because all private information on the virtual smart card is encrypted by using the TPM on the host computer, it cannot be used on a different computer with a different TPM. There is no method to export the user's virtual smart card for use on other computers, which adds to the security of virtual smart cards. If a user requires access to network resources on multiple computers, multiple virtual smart cards can be issued for that user.

*

Multi-factor authentication, or two-factor authentication, is the term used to define the authentication mechanism that involves two (or more) factors. A "factor" is something you can prove: something you know (for instance, the username and password), something you possess (for instance, a token, a TPM-enabled device, a certificate, or a phone), or something that confirms your physical identity (for instance, a positive iris scan or a specific thumbprint).

Incorrect:

Not B: This would only b

Reference: Deploy Virtual Smart Cards

QUESTION 5



HOTSPOT

You support Windows 8.1 Pro computers.

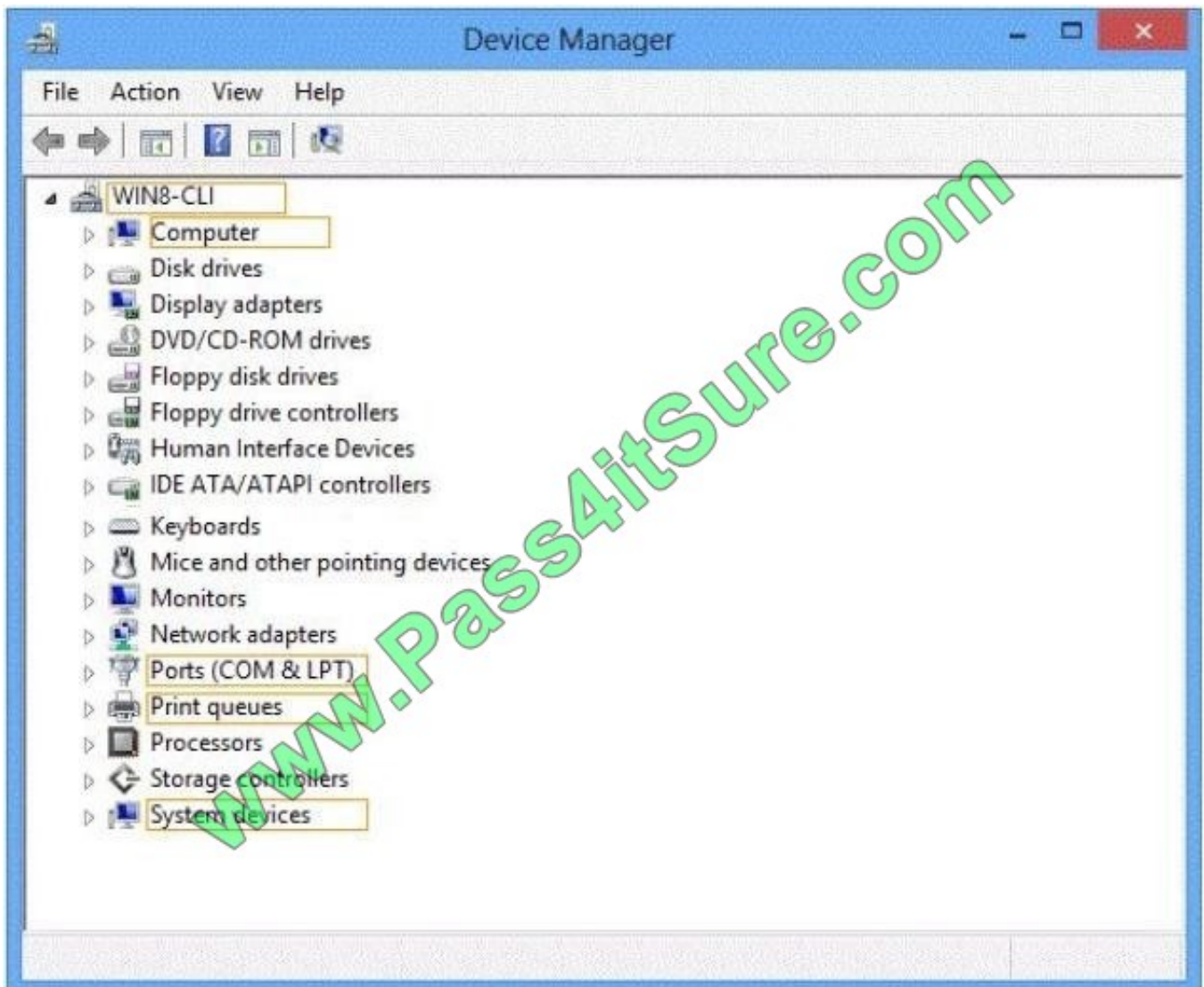
You plug a legacy hardware adapter into a computer. You open Device Manager and notice that the legacy hardware adapter is not listed.

You need to install the legacy hardware adapter.

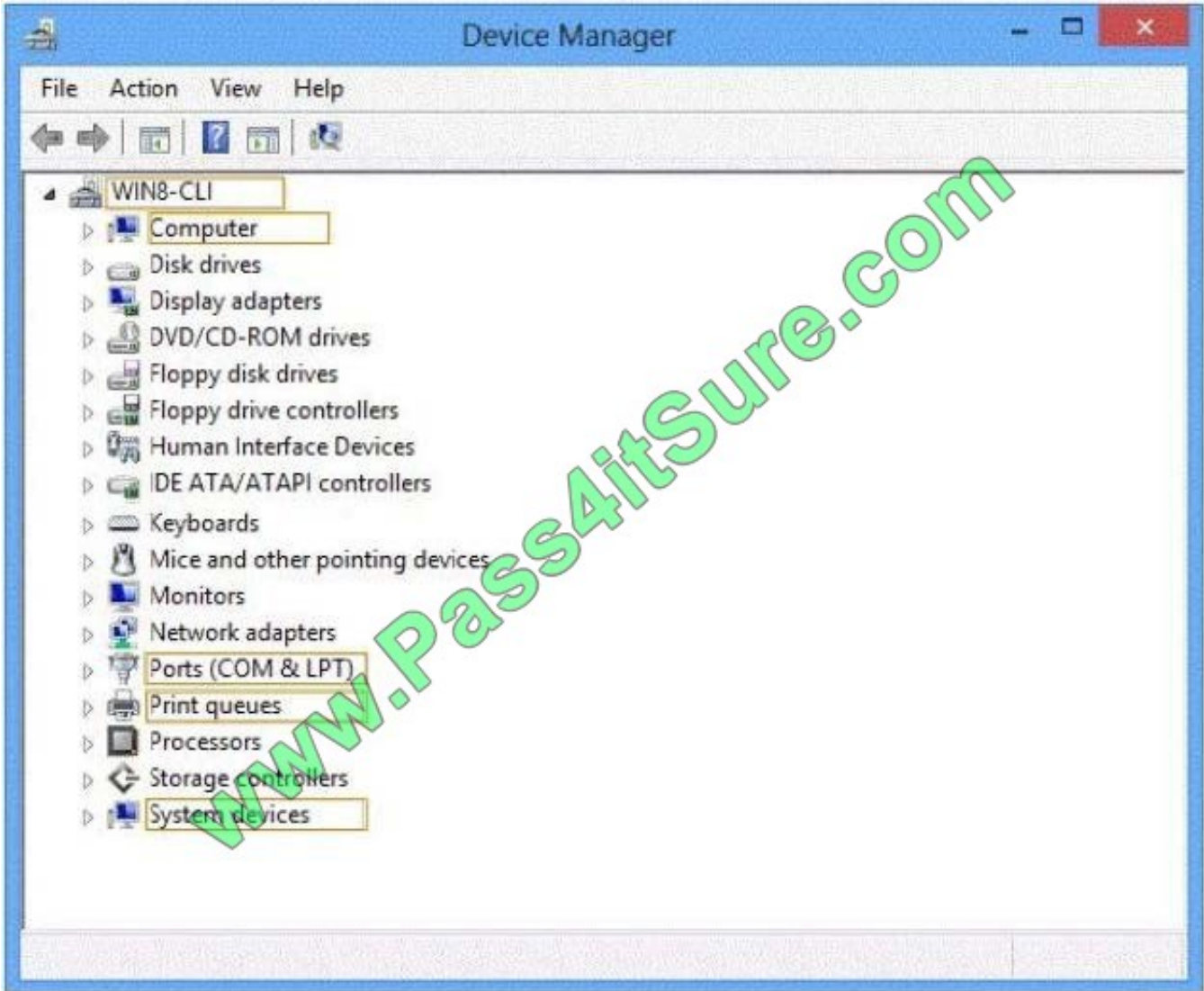
To which node should you add the legacy hardware adapter? (To answer, select the appropriate object in the answer area.)

```
Run the Loadstate.exe
\\server\share\ /i:migdocs.xml /i:migapp.xml
command.
```

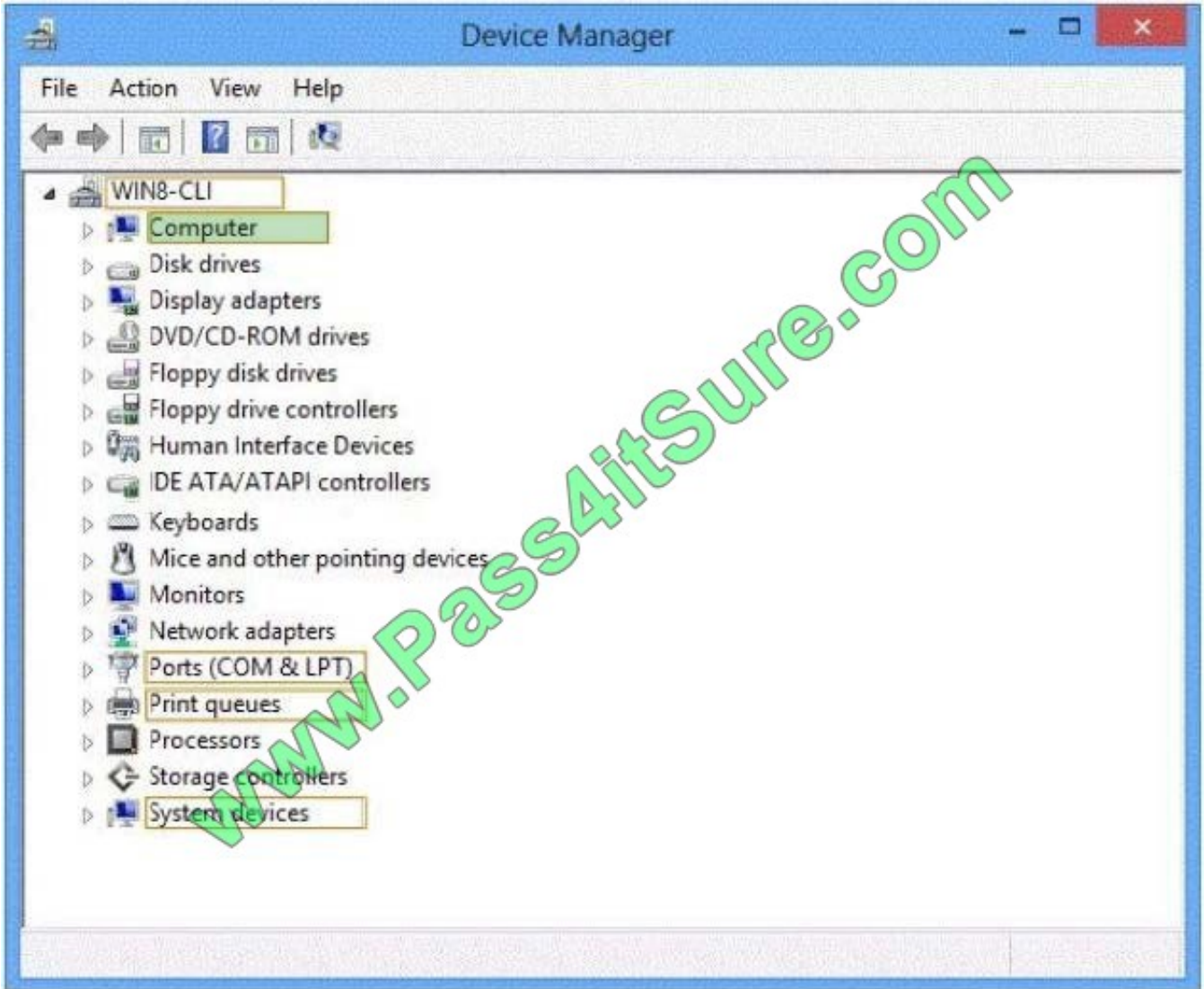
```
loadstate /i:migdocs.xml /i:migapp.xml /lac /lae /l:
```

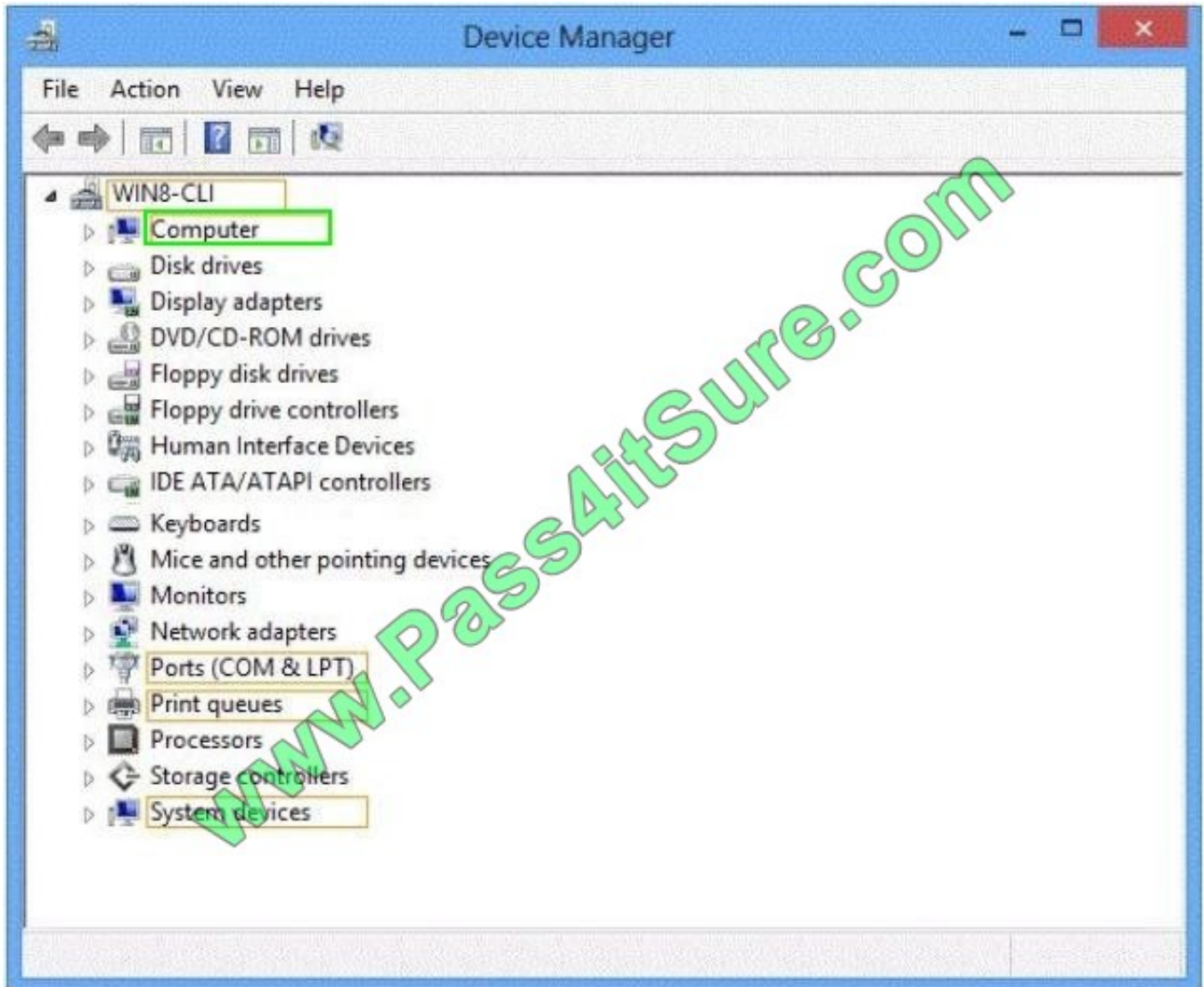


Hot Area:



Correct Answer:





1. Step Right click the Computer icon and select Manage from the drop-down list.
2. Step Computer Management window would open up allowing you to make changes in the hardware of your system. Click Device Manager from the left pane and right click your computer name from the top of the list. Now click add legacy hardware.
3. A new popup window would show.



A new popup window would show for adding a new hardware

QUESTION 6

Your company has a main office and a branch office. Each office contains several servers that run Windows Server 2012.

You need to configure BranchCache for the client computers in the branch office. The solution must ensure that all of the cached content is in a central location.

What should you run on each client computer?

- A. the netdom command
- B. the Enable-BCHostedClient cmdlet
- C. the Enable-BCDistributed cmdlet
- D. the winrm command

Correct Answer: B

Explanation: Enable-BCHostedClient

Configures BranchCache to operate in hosted cache client mode.

Note:

*

BranchCache is designed to reduce WAN link utilization and improve application responsiveness for branch office



workers who access content from servers in remote locations. Branch office client computers use a locally maintained cache

of data to reduce traffic over a WAN link. The cache can be distributed across client computers (Distributed Cache mode) or can be housed on a server in the branch (Hosted Cache mode).

*

BranchCache is disabled by default on client computers. Take the following steps to enable BranchCache on client computers:

Turn on BranchCache.

Enable either Distributed Cache mode or Hosted Cache mode. Configure the client firewall to enable BranchCache protocols. <http://technet.microsoft.com/en-us/library/hh848394.aspx> <http://technet.microsoft.com/en-us/library/hh848398.aspx>

QUESTION 7

You administer laptop and desktop computers that run Windows 8 Enterprise in an Active Directory domain. Your company has purchased a subscription to Windows Intune.

You plan to install Intune Endpoint Protection on all computers. Some of the computers also have another antimalware application installed.

You need to ensure that only the Intune Endpoint Protection application is running on all computers. What should you do?

- A. Configure the Enable Realtime Protection policy to Yes.
- B. Configure the Enable Endpoint Protection policy to Only on computers that are unprotected when Endpoint Protection is installed.
- C. Configure the Enable Endpoint Protection policy setting to Yes.
- D. Configure the Enable Endpoint Protection policy setting to No.

Correct Answer: C

Explanation: Using Windows Intune Endpoint Protection or an Existing Endpoint Protection Application

To explicitly enable Windows Intune Endpoint Protection on client computers that are running another endpoint protection application that was detected by Windows Intune, you have to create a Windows Intune policy, and then deploy it to

those computers. To do so, in the Windows Intune administrator console, create a new policy, set the policy value for Enable Endpoint Protection to Yes, and deploy the policy to the appropriate computers. After you confirm that Windows

Intune Endpoint Protection is helping to secure the client computers, you can remove or disable the other endpoint protection application.

Reference:

<http://onlinehelp.microsoft.com/en-us/windowsintune.latest/hh850832.aspx>

**QUESTION 8**

You administer a company network that includes Windows 8.1 Enterprise computers in an Active Directory domain. The company has purchased a subscription to Windows Intune.

Corporate security policy requires that computers in the accounting department have file and program activity logged. A user in the accounting department uses a computer that is managed by Windows Intune.

You need to ensure that file and program activity is always monitored on this computer.

What should you do?

- A. Create a new Windows Firewall Setting policy in the Windows Intune Admin Console.
- B. In the Windows Intune Admin Console, create a new Windows Intune Agent Settings policy that uses the recommended settings.
- C. Create a new Windows Intune Mobile Security policy in the Windows Intune Admin Console.
- D. Create and deploy a custom policy in the Windows Intune Center Settings template.

Correct Answer: B

Explanation: The Windows Intune Agent policy template in the Windows Intune administrator console lets you create policies that you can use to configure the Windows Intune Endpoint Protection policy settings and Updates policy settings.

Note: Monitor file and program activity on computers This policy setting lets you configure monitoring for incoming files and outgoing files, without completely disabling monitoring on client computers. ?Yes lets you configure monitoring for incoming and outgoing files. ?No disables monitoring for incoming and outgoing files. Recommended value: Yes

Reference: Windows Intune Agent Policy Reference

QUESTION 9

You are systems administrator for a construction company. The Supervisor oversee multiple projects simultaneously. The supervisor use a mobile broadband connection on their Windows 8.1 tablets to create documents and interact with corporate billing applications.

The accounting department reports that the current data plan costs the company too much money.

You need to reduce the data plan costs without disrupting the supervisors activities. Which two actions should you perform? (Select Two)

- A. Disable Work Folder.
- B. Turn off Download over Metered Connections.
- C. Disable VPN auto triggering.
- D. Enable Metered Connections.



Correct Answer: BD

QUESTION 10

You administer 50 laptops that run Windows 7 Professional 64-bit.

Your company purchases new laptops. You plan to install Windows 8.1 Pro (64-bit) on each new laptop.

You need to ensure that user application settings, Windows settings, and user files are stored in a shared location before the installation of Windows 8.1 Pro on the new laptops.

Which four actions should you perform in sequence? (To answer, move the appropriate four actions from the list of actions to the answer area and arrange them in the correct order.)

Select and Place:

Actions

- Run the **Scanstate.exe**
c:\store /i:migdocs.xml /i:migapp.xml /v:13 /c /hardlink /nocompress command.
- Install Windows 8.1 Pro on the new laptops. Install standard operating environment applications. Copy the User State Migration Tool (USMT) files and tools to the laptops.
- Run the **Loadstate.exe**
c:\store /i:migdocs.xml /i:migapp.xml command.
- Run the **Loadstate.exe**
\\server\share\ /i:migdocs.xml /i:migapp.xml command.
- Copy the User State Migration Tool (USMT) files and tools to the source computer.
- Run the **Scanstate.exe**
\\server\share\ /i:migdocs.xml /i:migapp.xml command.

Answer Area

Correct Answer:

**Actions**

Run the **Scanstate.exe**
c:\store /i:migdocs.xml /i:migapp.xml /v:13 /c /hardlink /nocompress command.

Run the **Loadstate.exe**
c:\store /i:migdocs.xml /i:migapp.xml command.

Answer Area

Copy the User State Migration Tool (USMT) files and tools to the source computer.

Run the **Scanstate.exe**
\\server\share\ /i:migdocs.xml /i:migapp.xml command.

Install Windows 8.1 Pro on the new laptops. Install standard operating environment applications. Copy the User State Migration Tool (USMT) files and tools to the laptops.

Run the **Loadstate.exe**
\\server\share\ /i:migdocs.xml /i:migapp.xml command.

Step 1: Gather Data Using the ScanState Tool**1.1 Install USMT (box 1)****1.2 Run ScanState to Create a Migration Store on the Server (box 2)**

Run ScanState on the source computer to collect files and settings. Type:

```
cd /d
```

```
scanstate /i:migdocs.xml /i:migapp.xml /l:
```

Step 2: Install Windows (box 3)**Step 3: Apply Data Using the LoadState Tool****3.1 To install the USMT**

Copy the USMT files and tools to the destination computer from the UFD or network share where you have saved them.

3.2 Run LoadState on the destination computer. Specify the same set of .xml files that you specified when using ScanState. (Box 4)

```
cd /d
```

Reference: Step-by-Step: Basic Windows Migration using USMT for IT Professionals

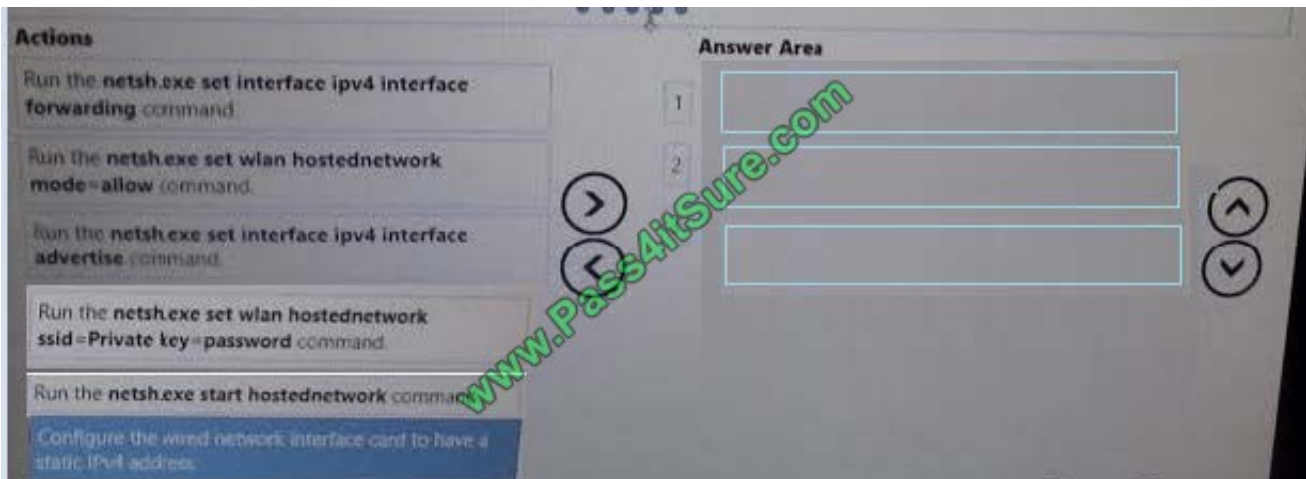


QUESTION 11

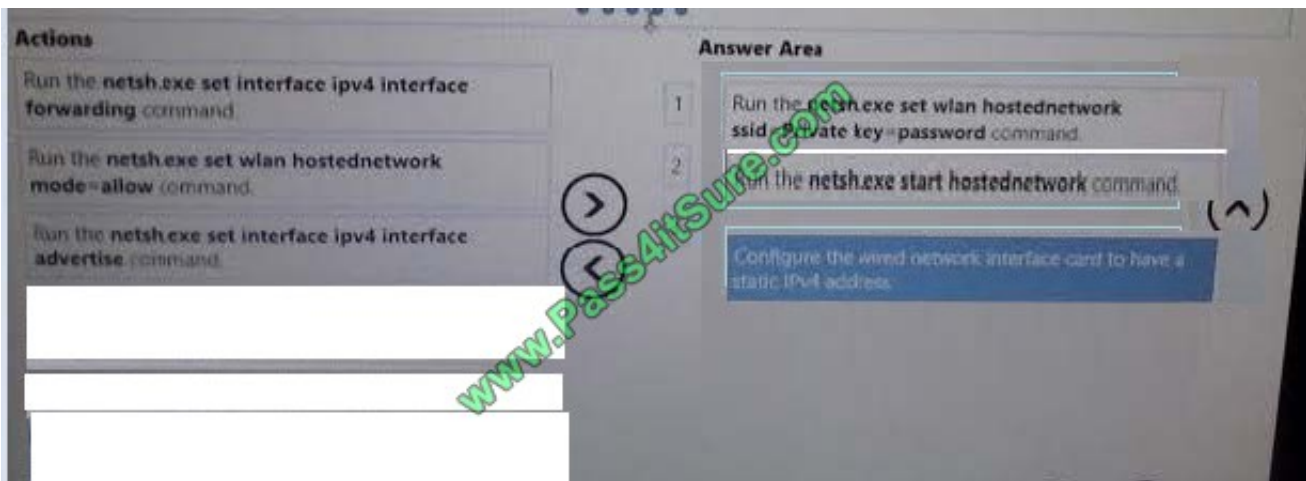
You are a system administrator for a company that has remote offices in several different cities.

You are responsible for configuring internet access in some of these offices. One remote office has a Windows 8.1 Pro desktop computer that is connected to the internet with a

wired connection.



Correct Answer:



QUESTION 12

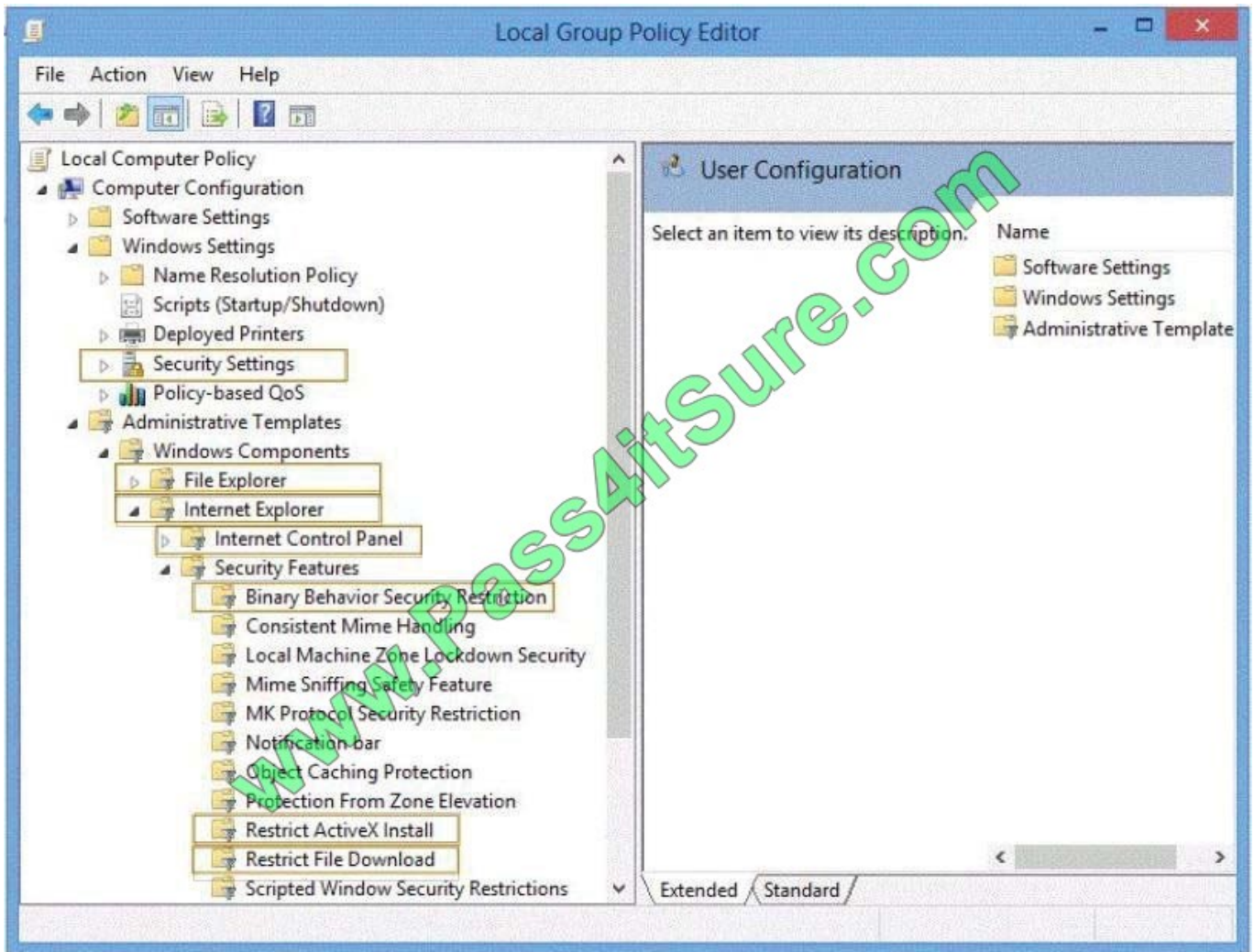
You support desktop computers that run Windows 8 Enterprise. One computer is a member of a workgroup and is used as a guest computer in a reception area.

You need to configure the SmartScreen setting to require administrator approval before running downloaded unknown software on the desktop computer.

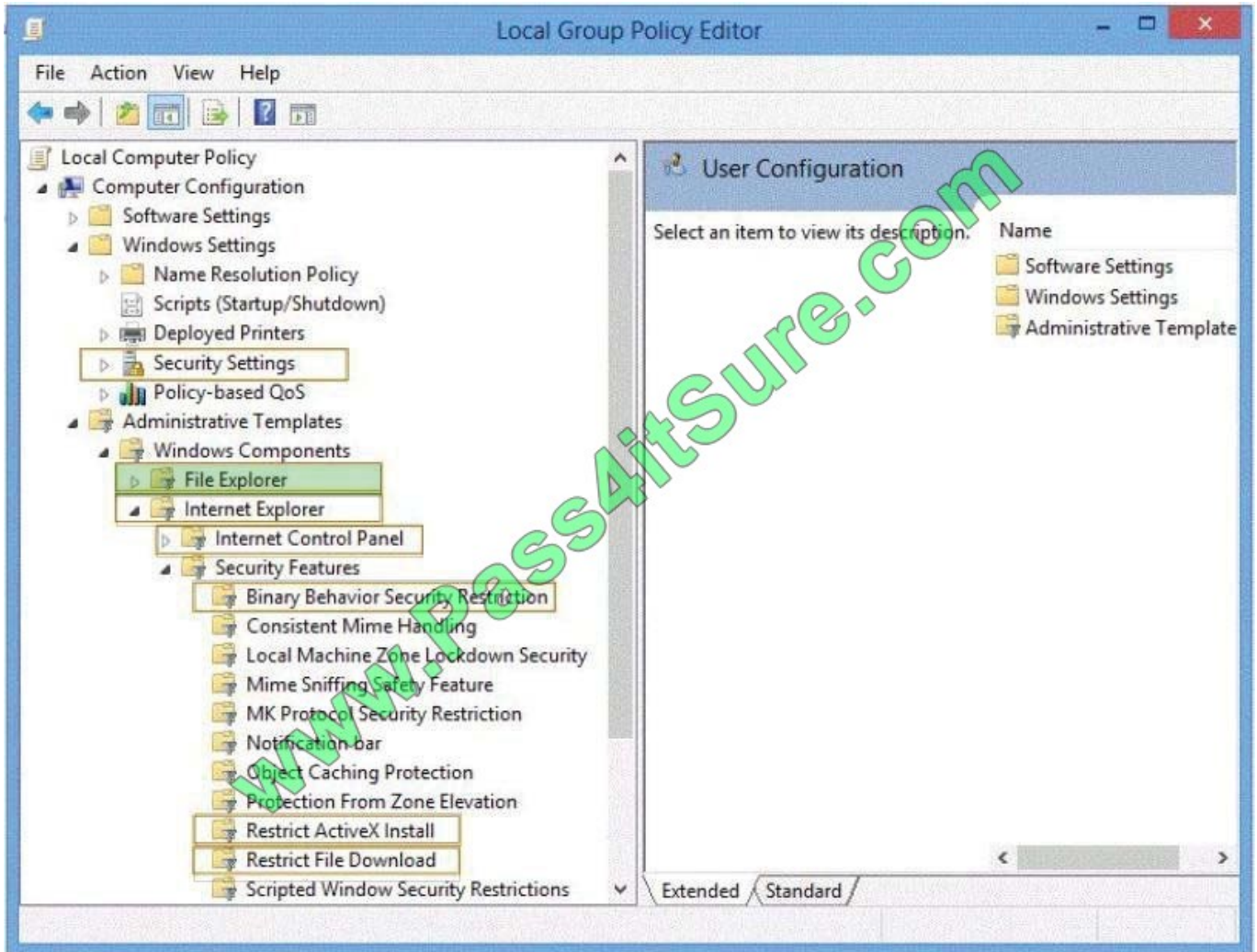
Which policy setting should you use? (To answer, select the appropriate object in the answer area.)



Hot Area:



Correct Answer:



<http://technet.microsoft.com/en-us/library/cc771104.aspx>

[Latest 70-688 Dumps](#)

[70-688 PDF Dumps](#)

[70-688 Practice Test](#)



To Read the [Whole Q&As](#), please purchase the [Complete Version](#) from [Our website](#).

Try our product !

100% Guaranteed Success

100% Money Back Guarantee

365 Days Free Update

Instant Download After Purchase

24x7 Customer Support

Average 99.9% Success Rate

More than 800,000 Satisfied Customers Worldwide

Multi-Platform capabilities - [Windows](#), [Mac](#), [Android](#), [iPhone](#), [iPod](#), [iPad](#), [Kindle](#)

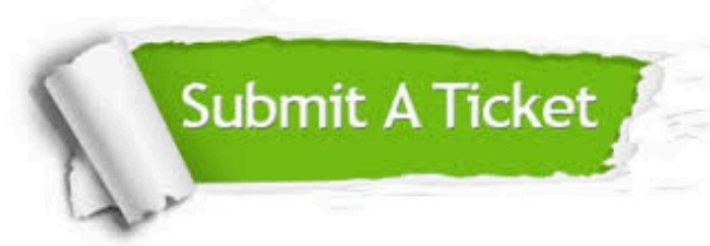
We provide exam PDF and VCE of Cisco, Microsoft, IBM, CompTIA, Oracle and other IT Certifications. You can view Vendor list of All Certification Exams offered:

<https://www.pass4itsure.com/allproducts>

Need Help

Please provide as much detail as possible so we can best assist you.

To update a previously submitted ticket:



 <p>One Year Free Update Free update is available within One Year after your purchase. After One Year, you will get 50% discounts for updating. And we are proud to boast a 24/7 efficient Customer Support system via Email.</p>	 <p>Money Back Guarantee To ensure that you are spending on quality products, we provide 100% money back guarantee for 30 days from the date of purchase.</p>	 <p>Security & Privacy We respect customer privacy. We use McAfee's security service to provide you with utmost security for your personal information & peace of mind.</p>
---	---	--

Any charges made through this site will appear as Global Simulators Limited.

All trademarks are the property of their respective owners.

Copyright © pass4itsure, All Rights Reserved.