



70-686^{Q&As}

Windows 7, Enterprise Desktop Administrator

Pass Microsoft 70-686 Exam with 100% Guarantee

Free Download Real Questions & Answers **PDF** and **VCE** file from:

<https://www.pass4itsure.com/70-686.html>

100% Passing Guarantee
100% Money Back Assurance

Following Questions and Answers are all new published by Microsoft
Official Exam Center

- ⚙ **Instant Download** After Purchase
- ⚙ **100% Money Back** Guarantee
- ⚙ **365 Days** Free Update
- ⚙ **800,000+** Satisfied Customers



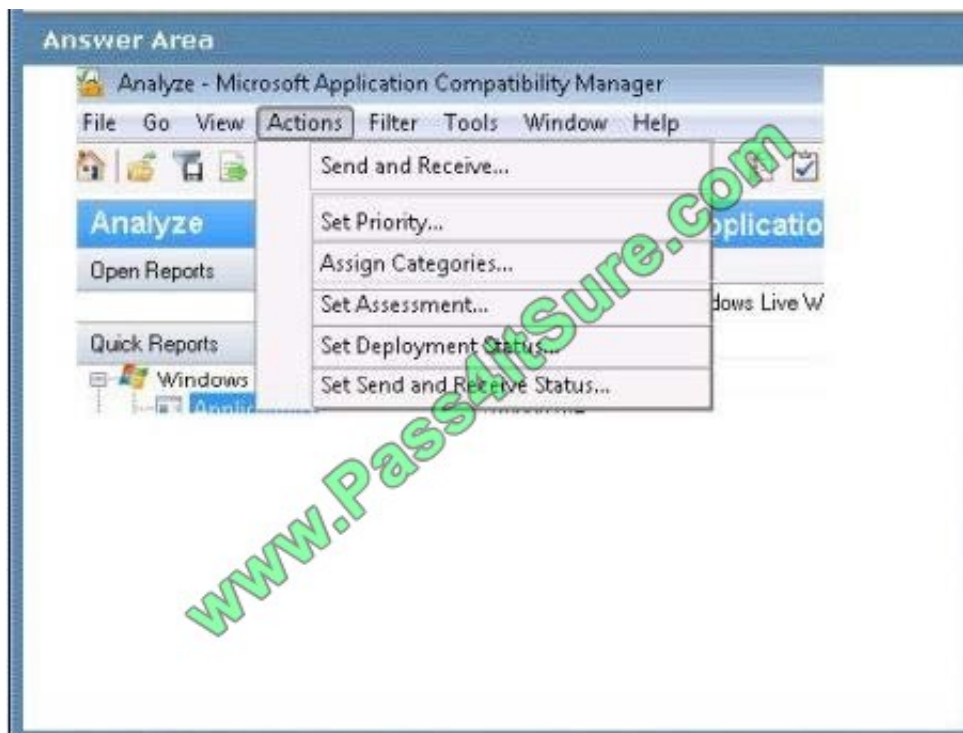
**QUESTION 1**

You use Microsoft Application Compatibility Manager to produce a report that lists a company's applications and their compatibility status with Windows 7.

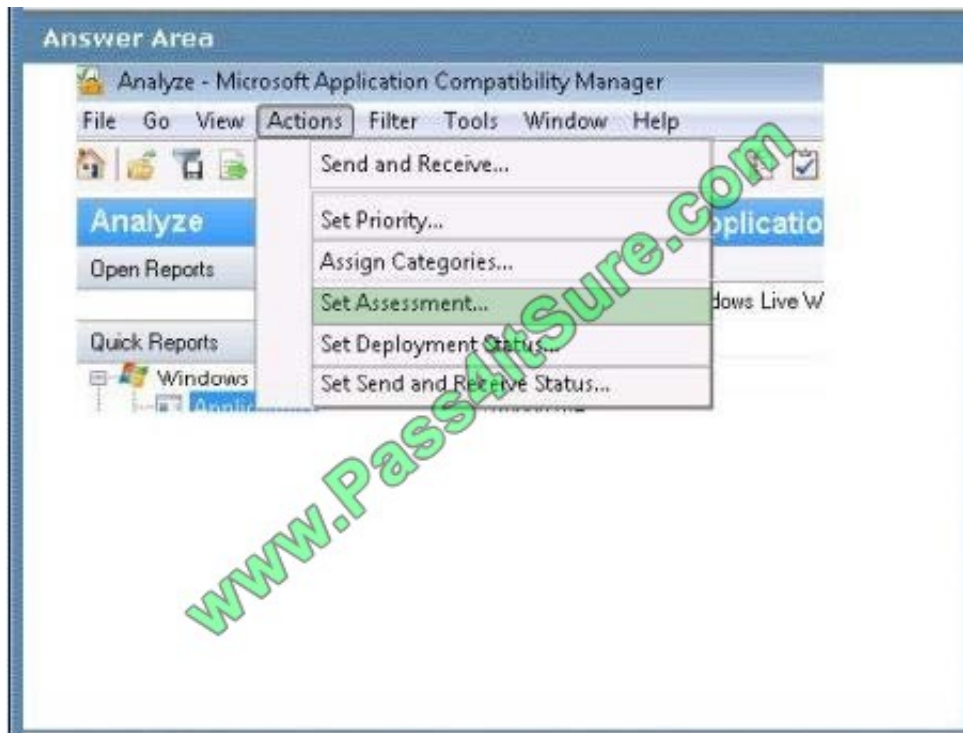
You need to add your ratings of the compatibility of the applications to the report.

Which Microsoft Application Compatibility Manager action should you select? To answer, select the appropriate setting or settings in the work area.

Hot Area:



Correct Answer:



QUESTION 2

You plan to deploy Windows 7 to client computers.

You have the following requirements:

Deploy Windows 7 over the network.

Do not affect the performance of existing network applications.

You need to design a zero-touch deployment strategy that supports the requirements.

What should you do?

- A. Deploy images from a Microsoft System Center Configuration Manager server that runs Windows Server 2008.
- B. Deploy images from a dedicated share on a Windows Server 2008 server.
- C. Ensure that all computers have the Internet Protocol version 6 (IPv6) protocol disabled prior to deployment.
- D. Ensure that all computers have the Internet Protocol version 4 (IPv4) protocol disabled prior to deployment.

Correct Answer: A

QUESTION 3

You create a Windows 7 image. You plan to test the image on 10 percent of the computers in each office. You need to



recommend a deployment strategy to minimize the amount of time spent deploying the image. What should you recommend?

- A. Distribute one USB flash drive containing a Windows 7 installation to Madrid, Carlsbad, and New Orleans. Create a new deployment share in Munich.
- B. Send one USB flash drive containing a Windows 7 installation to each site.
- C. Send one DVD installation disk to each site.
- D. Distribute one USB flash drive containing a Windows 7 installation to Carlsbad and New Orleans. Create a new deployment share in Los Angeles.

Correct Answer: A

QUESTION 4

Your network has a single domain with 1,000 client computers that run Windows 7.

A large number of software installation scripts are configured to run on the client computers.

You need to recommend a Group Policy setting to allow users to log on to their computers as soon as possible at first boot.

What should you recommend?

- A. Configure the Run logon scripts synchronously setting to be Enabled.
- B. Configure the Run logon scripts synchronously setting to be Disabled.
- C. Configure the Run startup scripts asynchronously setting to be Enabled.
- D. Configure the Run startup scripts asynchronously setting to be Disabled.

Correct Answer: C

Run logon scripts synchronously Description Directs the system to wait for logon scripts to finish running before it starts the Windows Explorer interface program and creates the desktop. If you enable this policy, Windows Explorer does not start until the logon scripts have finished running. This setting assures that logon script processing is complete before the user starts working, but it can delay the appearance of the desktop. If you disable this policy or do not configure it, the logon scripts and Windows Explorer are not synchronized and can run simultaneously. **Run startup scripts asynchronously** Description Lets the system run startup scripts simultaneously. Startup scripts are batch files that run before the user is invited to log on. By default, the system waits for each startup script to complete before it runs the next startup script. If you enable this policy, the system does not coordinate the running of startup scripts. As a result, startup scripts can run simultaneously. If you disable this policy or do not configure it, a startup script cannot run until the previous script is complete. <http://msdn.microsoft.com/en-us/library/ms811602.aspx>

QUESTION 5

A company has a server that runs Windows Server 2008 R2 in an Active Directory Domain Services (AD DS) environment. The domain controllers were recently upgraded from Windows Server 2003. You are using Group Policy to deploy

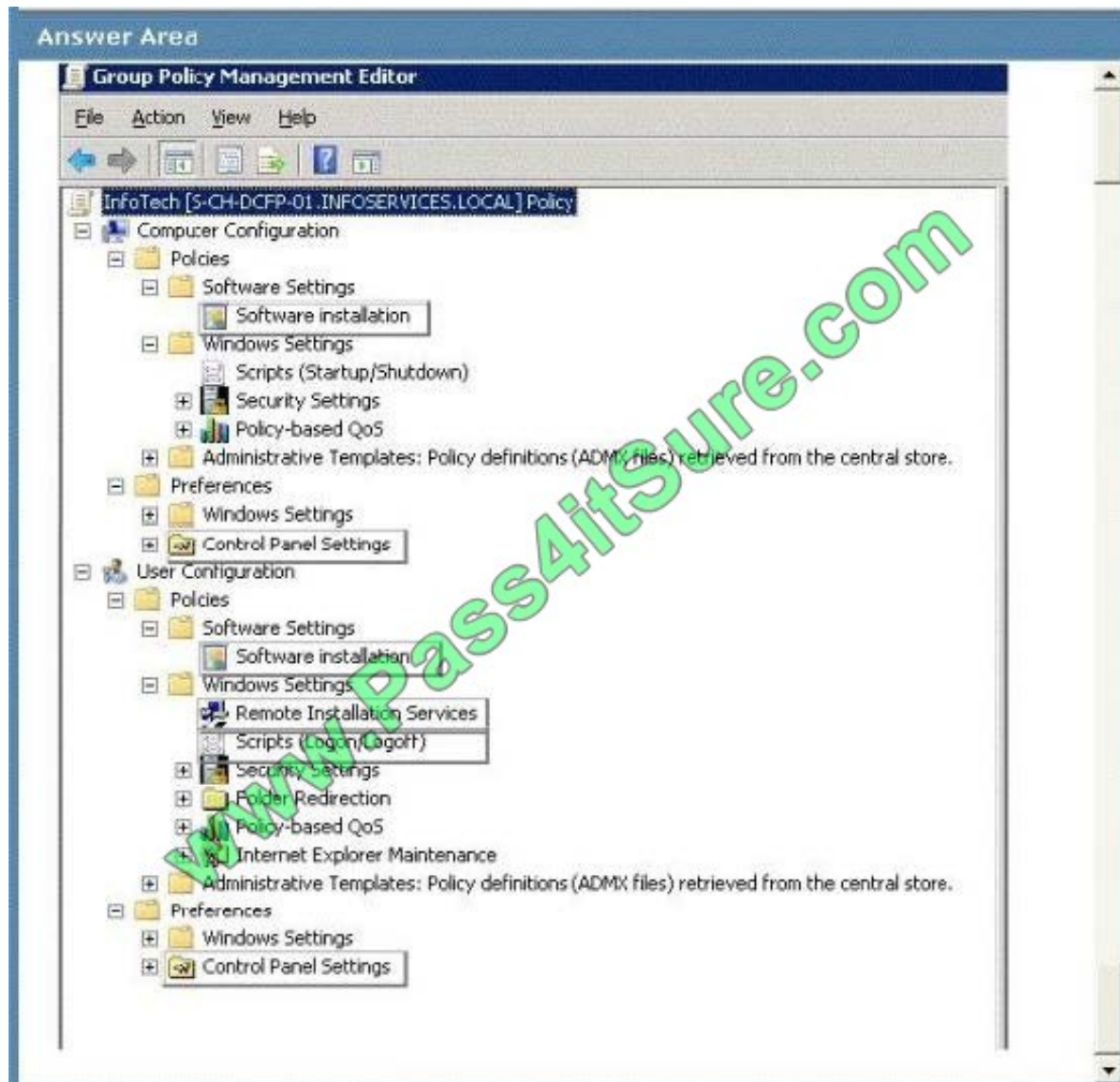


applications to the client computers remotely. The computers reboot each night as part of routine maintenance.

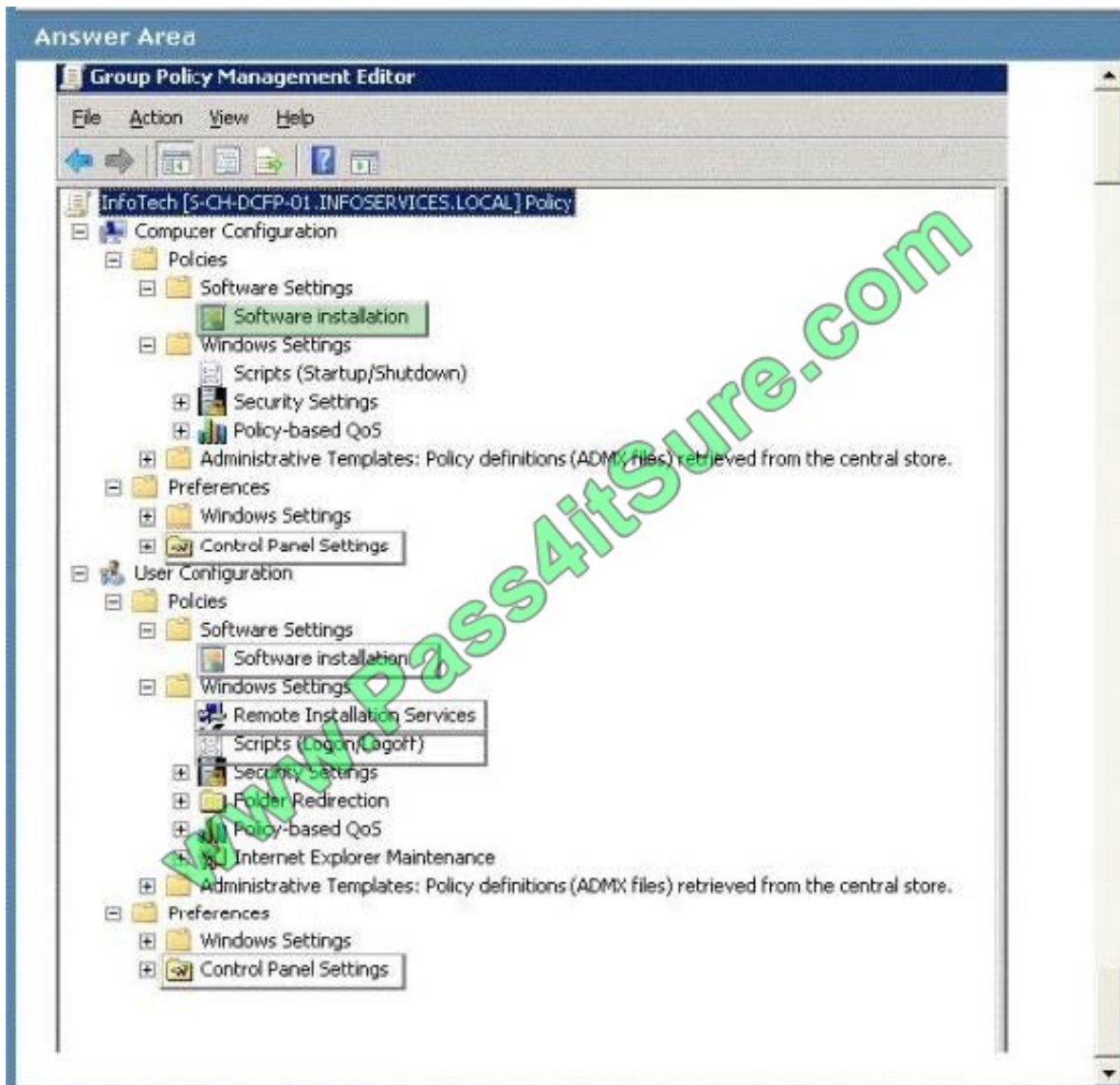
You need to ensure that the application installs when the computer starts up.

Which Group Policy setting should you configure? To answer, select the appropriate setting or settings in the work area.

Hot Area:



Correct Answer:

**QUESTION 6**

Your company has client computers that run Windows XP Professional.

You are planning to install Windows 7 Enterprise on the existing client computers.

You need to design a user state migration strategy that minimizes network bandwidth and server use when user data is being migrated.

What should you do?

- A. Use the Refresh Computer method and a hard-link migration store.
- B. Use the Refresh Computer method and a compressed migration store.
- C. Use the Replace Computer method and a hard-link migration store.



D. Use the Replace Computer method and a compressed migration store.

Correct Answer: A

A hard-link migration store enables you to perform an in-place migration where all user state is maintained on the computer while the old operating system is removed and the new operating system is installed; this is why it is best suited for

the computer-refresh scenario.

[http://technet.microsoft.com/en-us/library/dd560753\(v=ws.10\).aspx](http://technet.microsoft.com/en-us/library/dd560753(v=ws.10).aspx)

Refresh Scenario

Similar to a new installation, the refresh scenario performs a clean setup. The difference is that the target computer already contains Windows, for which files and settings will be preserved (installed applications are not taken into

consideration). This scenario is especially useful in the event that preserving the user state is a priority. It still leverages the consistency benefits that come through a new installation. You can automate this scenario with the latest version of

the User State Migration Tool (USMT 4.0), which will collect pertinent data for each user state found in the system, and restore it after the clean installation is performed.

Replace Scenario

This is similar to the refresh scenario, except the target system is a new computer that does not yet contain any files or settings. The scenario consists of conducting a new installation on the target computer, and then using the USMT 4.0 to

transfer files and settings from the old computer. You can run this scenario side-by-side with an older system running Windows XP or

Windows Vista.

<http://technet.microsoft.com/en-us/magazine/hh124549.aspx> Hints:

Install on existing client computer = refresh

Replace a new client computer = Replace

QUESTION 7

Your company's network has client computers that run Windows 7.

A software vendor releases version 2 of an application that your company uses.

Your company currently uses version 1.

Version 1 and version 2 are not compatible.

You plan to deploy version 2 of the application.

You have the following requirements:

Users must be able to run both versions of the application on their computers.



Version 2 must be available when a client computer is not connected to the network.

You need to plan a software deployment process that meets the requirements.

What should you do?

- A. Deploy version 2 of the application by using a Microsoft System Center Configuration Manager package.
- B. Deploy version 2 of the application by using a Group Policy Software Installation policy.
- C. Deploy version 2 of the application as a Remote Desktop Services RemoteApp.
- D. Deploy version 2 of the application by using Microsoft Application Virtualization (App-V).

Correct Answer: D

Microsoft Application Virtualization (MS App-V) platform allows applications to be deployed in real-time to any client from a virtual application server. It removes the need for local installation of the applications. Instead, only the App-v client needs to be installed on the client machines. All application data is permanently stored on the virtual application server. Whichever software is needed is either streamed or locally cached from the application server on demand and run locally. The App-V stack sandboxes the execution environment so that the application does not make changes to the client itself (OS File System and/or Registry). App-V applications are also sandboxed from each other, so that different versions of the same application can be run under App-V concurrently.

http://en.wikipedia.org/wiki/Microsoft_App-V

QUESTION 8

Your network contains an Active Directory domain. What should you do next?

- A. Create a computer collection that contains the computer account for computer1.
- B. Create a distribution group that contains the computer account for computer1.
- C. Create a child domain and move the computer account for computer1 to the child domain.
- D. Create a security group that contains the computer account for computer1.

Correct Answer: B

Original answer is B but some ppl believe is A. so i put it as A

----- CheddaBob from United States - Apr 18 2012, 8:40 PM

Report Spam @looller Answer is A. I took the test late December. I used a different dump that had the correct answer.

----- looller from United States - Apr 17 2012, 9:42 PM

Report Spam I think the answer is "A" here? anyone agree? answer given is B

QUESTION 9

You are replacing the desktop computers in the Chicago office.

You need to automate the migration of user profile data to the new computers.

What should you recommend? (Choose all that apply.)



- A. state migration point
- B. Windows Client Operating System Management Pack
- C. Background Intelligent Transfer Server
- D. Windows Easy Transfer
- E. ConfigMgr custom task sequence

Correct Answer: AE

QUESTION 10

Users with newly deployed Windows 7 computers see a security prompt when they attempt to upload documents to the company\\s intranet site.

You need to suppress the prompt without creating a security risk for the company.

What should you do? (Choose all that apply).

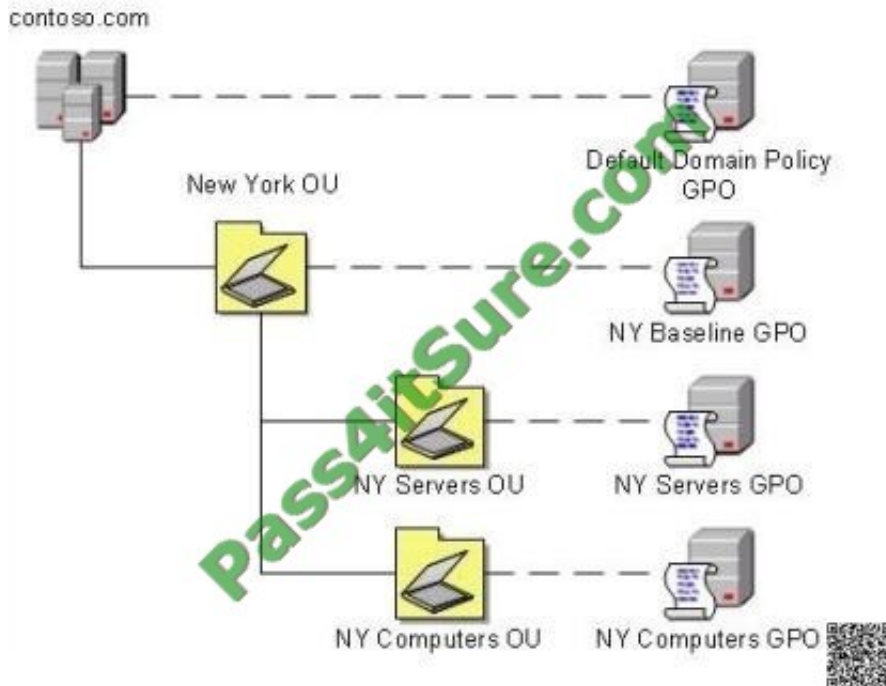
- A. Modify the GPO to set <https://intranet.company.com> with a value of 1 in the Site to Zone Assignment List.
- B. Modify the default Windows 7 image to add the Internet Explorer Enhanced Security Configuration component.
- C. Modify the default Windows 7 image to change the default Internet Explorer security level to Medium Low.
- D. Modify the default Windows 7 image to disable the Internet Explorer Automatically Detect Intranet Network setting.
- E. Create a GPO and link it to the root of the domain.
- F. Modify the GPO to set the web server\\s NetBIOS name with a value of 2 in the Site to Zone Assignment List.

Correct Answer: AF

QUESTION 11

Your company has an Active Directory Domain Services (AD DS) forest with a single domain named contoso.com.

You deploy a new Group Policy object (GPO) named NY Computers GPO as part of the organizational unit (OU) and GPO design shown in the following diagram.



The NY Computers GPO contains computer configuration settings and user configuration settings.

User configuration settings are not being applied to users who log on to client computers in the NY Computers OU.

You need to ensure that user configuration settings are being applied.

What should you do?

- A. Enable user configuration settings in the Default Domain Policy GPO.
- B. Enable loopback processing in the NY Computers GPO.
- C. Enable user configuration settings in the NY Computers GPO.
- D. Enable loopback processing in the Default Domain Policy GPO.

Correct Answer: B

refer to Planning and managing windows 7 desktop deployments and environment Pg 10-92

QUESTION 12

You create a Windows 7 deployment image that includes custom Internet Explorer branding and search providers.

Your company decides to deploy all custom settings by using Group Policy.

You need to restore the Internet Explorer settings in the deployment image to the Microsoft default settings.

Which two actions should you perform? (Each correct answer presents part of the solution.

Choose two.)



- A. Use the Reset Internet Explorer Settings (RIES) feature, and run the Remove Branding process on the deployment image.
- B. Update the Internet Explorer Maintenance policy processing Group Policy object (GPO) settings for all computers.
- C. Update the Internet Explorer Manage Add-ons settings for all computers.
- D. Use the Reset Internet Explorer Settings (RIES) feature, and run the Reset process on the deployment image.

Correct Answer: AD

Reset Internet Explorer settings Deletes all temporary files, disables browser add-ons, and resets all the changed settings to factory settings. It can be used if the browser is in an unusable state.

http://en.wikipedia.org/wiki/Internet_Explorer_7

[Latest 70-686 Dumps](#)

[70-686 Exam Questions](#)

[70-686 Braindumps](#)



To Read the [Whole Q&As](#), please purchase the [Complete Version](#) from [Our website](#).

Try our product !

100% Guaranteed Success

100% Money Back Guarantee

365 Days Free Update

Instant Download After Purchase

24x7 Customer Support

Average 99.9% Success Rate

More than 800,000 Satisfied Customers Worldwide

Multi-Platform capabilities - [Windows](#), [Mac](#), [Android](#), [iPhone](#), [iPod](#), [iPad](#), [Kindle](#)

We provide exam PDF and VCE of Cisco, Microsoft, IBM, CompTIA, Oracle and other IT Certifications. You can view Vendor list of All Certification Exams offered:

<https://www.pass4itsure.com/allproducts>

Need Help

Please provide as much detail as possible so we can best assist you.

To update a previously submitted ticket:



 One Year Free Update <p>Free update is available within One Year after your purchase. After One Year, you will get 50% discounts for updating. And we are proud to boast a 24/7 efficient Customer Support system via Email.</p>	 Money Back Guarantee <p>To ensure that you are spending on quality products, we provide 100% money back guarantee for 30 days from the date of purchase.</p>	 Security & Privacy <p>We respect customer privacy. We use McAfee's security service to provide you with utmost security for your personal information & peace of mind.</p>
---	---	--

Any charges made through this site will appear as Global Simulators Limited.

All trademarks are the property of their respective owners.

Copyright © pass4itsure, All Rights Reserved.