



70-460^{Q&As}

Transition Your MCITP: Business Intelligence Developer 2008 to
MCSE: Business Intelligence

Pass Microsoft 70-460 Exam with 100% Guarantee

Free Download Real Questions & Answers **PDF** and **VCE** file from:

<https://www.pass4itsure.com/70-460.html>

100% Passing Guarantee
100% Money Back Assurance

Following Questions and Answers are all new published by Microsoft
Official Exam Center

- ⚙️ **Instant Download** After Purchase
- ⚙️ **100% Money Back** Guarantee
- ⚙️ **365 Days** Free Update
- ⚙️ **800,000+** Satisfied Customers



**QUESTION 1**

You are developing a SQL Server Analysis Services (SSAS) cube named Sales Planning. The cube consists of two measure groups named Sales and Planning. Each measure group is based on a data warehouse fact table and consists of a

single MOLAP partition that has the same name as its measure group.

The Planning measure group consists of two measures:

Forecast, which uses the Sum aggregate function

Forecast Count, which uses the Count aggregate function

Users contribute planning values by using a legacy application. An extract, transform, load (ETL) process is scheduled to periodically transfer the planning values from the database of the legacy application to the data warehouse.

Financial analysts query the Sales Planning cube and report that the planning values are sometimes out of date. A new company requirement mandates that the planning values be entered directly into the cube by using Microsoft Excel 2010

PivotTable What-If Analysis.

You need to write-enable the Planning partition.

What should you do before write-enabling the partition?

- A. Set the StorageMode property of the Planning partition to Rolap
- B. Set the ProcessingMode property of the Planning partition to LazyAggregations.
- C. Set the ProcessingMode property of the Planning measure group to LazyAggregations.
- D. Remove the Forecast Count measure.
- E. Set the Type property of the Planning measure group to Budget.
- F. Convert the Planning measure group to a linked measure group.

Correct Answer: D

QUESTION 2

You are developing a SQL Server Analysis Services (SSAS) cube.

You need to add a calculated member to the Customer dimension to evaluate the sum of values for the United Kingdom and the United States.

Which expression should you use? (To answer, drag the appropriate expression to the answer area.)

Select and Place:



Expressions	Answer Area
<code>[Customer].[Customer Geography].[Country].&[United Kingdom] & [Customer].[Customer Geography].[Country].&[United States]</code>	CREATE MEMBER CURRENTCUBE.[Customer].[Customer Geography].[All].[UK and USA] AS
<code>{[Customer].[Customer Geography].[Country].&[United Kingdom],[Customer].[Customer Geography].[Country].&[United States]}</code>	<input type="text" value="Expression"/>
<code>[Customer].[Customer Geography].[Country].&[United Kingdom] UNION [Customer].[Customer Geography].[Country].&[United States]</code>	
<code>SUM({[Customer].[Customer Geography].[Country].&[United Kingdom],[Customer].[Customer Geography].[Country].&[United States]})</code>	
<code>SUM({[Customer].[Customer Geography].[Country].&[United Kingdom],[Customer].[Customer Geography].[Country].&[United States]})</code>	

Correct Answer:

Expressions	Answer Area
<code>[Customer].[Customer Geography].[Country].&[United Kingdom] & [Customer].[Customer Geography].[Country].&[United States]</code>	CREATE MEMBER CURRENTCUBE.[Customer].[Customer Geography].[All].[UK and USA] AS
<code>{[Customer].[Customer Geography].[Country].&[United Kingdom],[Customer].[Customer Geography].[Country].&[United States]}</code>	<input type="text" value="SUM({[Customer].[Customer Geography].[Country].&[United Kingdom],[Customer].[Customer Geography].[Country].&[United States]})"/>
<code>[Customer].[Customer Geography].[Country].&[United Kingdom] UNION [Customer].[Customer Geography].[Country].&[United States]</code>	
<code>SUM({[Customer].[Customer Geography].[Country].&[United Kingdom],[Customer].[Customer Geography].[Country].&[United States]})</code>	

QUESTION 3

You are developing a SQL Server Analysis Services (SSAS) cube for the accounts department.

You create a measure group named Exchange Rate that consists of measures pertaining to currency exchange rates. One of the measures in this group is named Average Rate and it will be used to report the average currency exchange rate

over time.

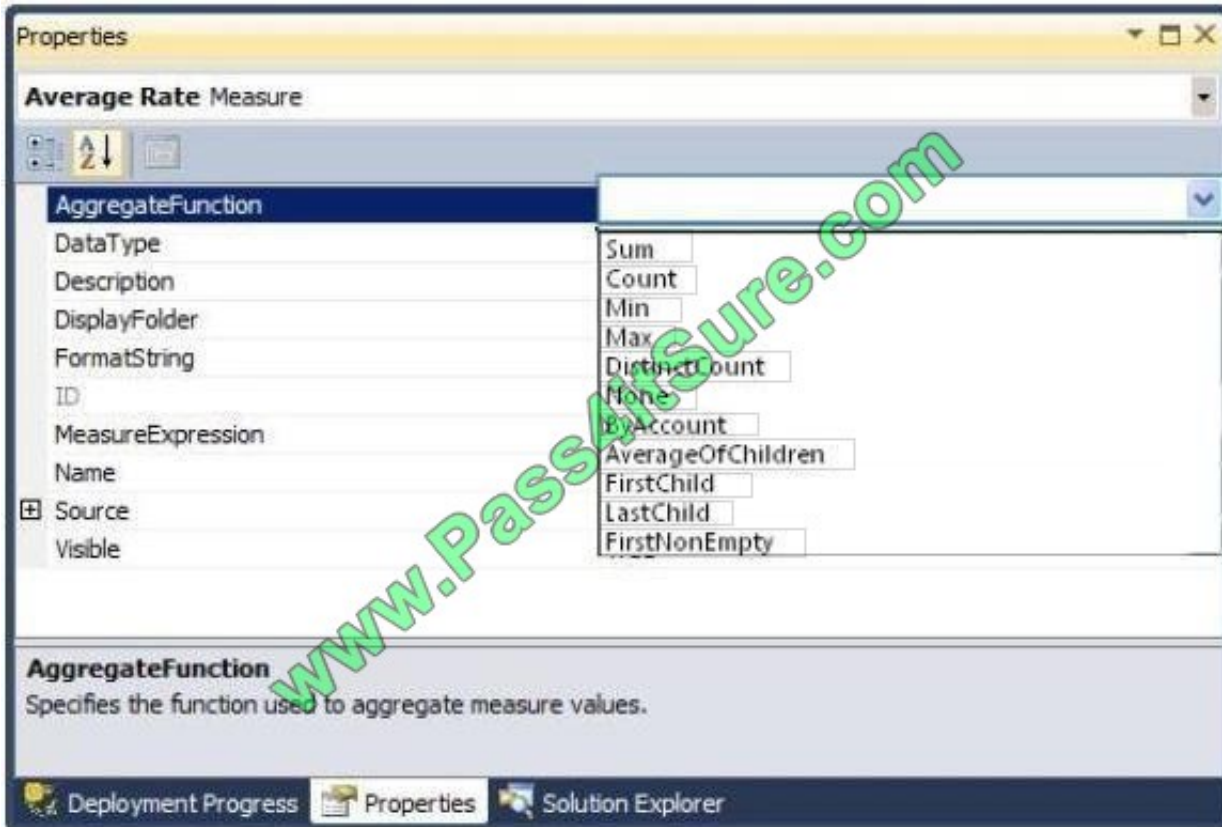
Currently the AggregationFunction property for the Average Rate measure is set to Sum.

You need to ensure that Average Rate measure reports the average of the currency exchange rate over time.

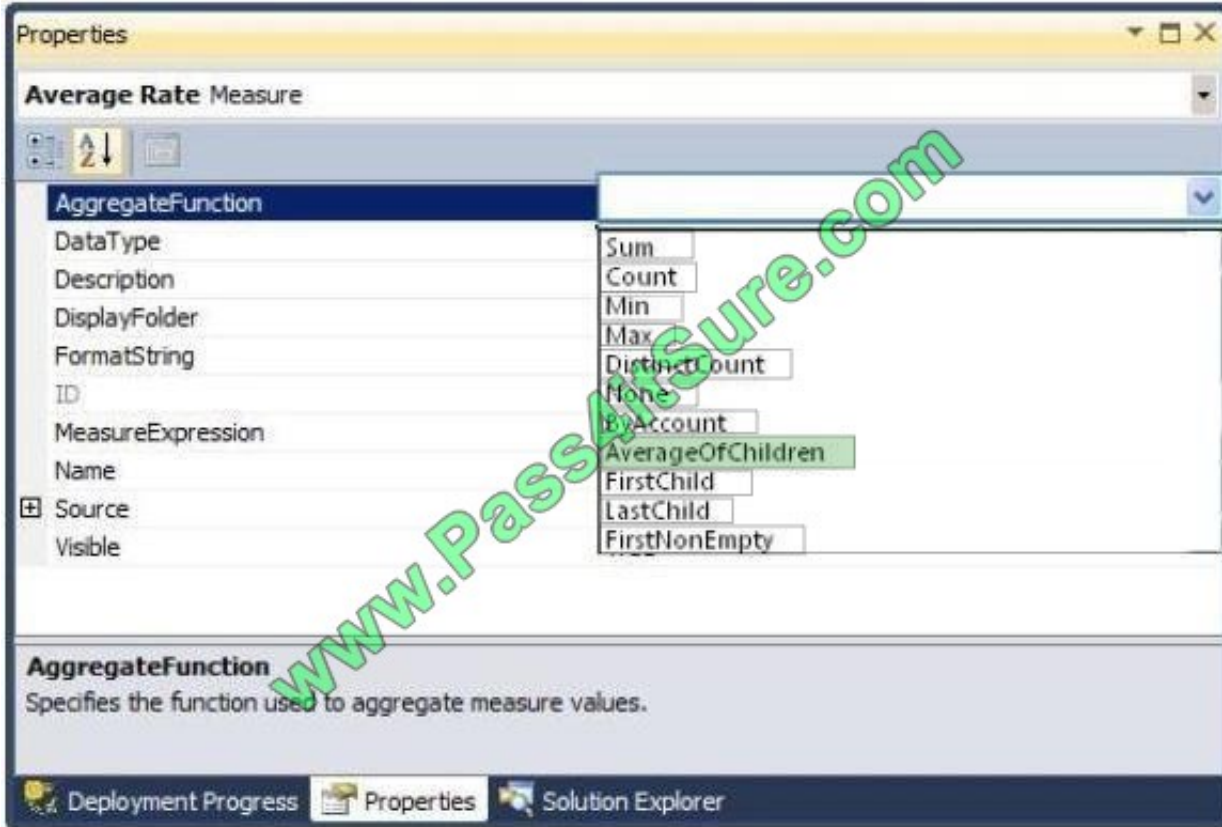


Which value should you select for the AggregationFunction property for the Average Rate measure? To answer, select the appropriate setting in the answer area.

Hot Area:



Correct Answer:



QUESTION 4

You are developing a SQL Server Analysis Services (SSAS) cube.

You need to reuse a Revenue measure group from a different database.

In SQL Server Data Tools (SSDT), which three actions should you perform in sequence? (To answer, move the appropriate actions from the list of actions to the answer area and arrange them in the correct order.)

Select and Place:

- From the **Select a Data Source** step, reference the Analysis Services data source.
- Launch the Linked Object Wizard.
- From the **Select Objects** step, select the Revenue measure group and the dimensions that you need to link.
- Launch the Business Intelligence Wizard.
- From the **Select Objects** step, select the Revenue measure group that you need to link.

Correct Answer:



Launch the Business Intelligence Wizard.

From the **Select Objects** step, select the Revenue measure group that you need to link.

Launch the Linked Object Wizard.

From the **Select a Data Source** step, reference the Analysis Services data source.

From the **Select Objects** step, select the Revenue measure group and the dimensions that you need to link.

QUESTION 5

You are designing a business intelligence (BI) solution for a hotel booking system. Each hotel booking may have more than one guest.

The BI solution contains a fact table named Booking, a factless fact table named Booking_Guest and a dimension named Guest.

Booking contains an entry for each booking. Booking_Guest contains an entry for each guest in each booking. Guest contains an entry for each guest.

You need to define the many-to-many relationship in SQL Server Analysis Services (SSAS) for the hotel booking system.

Which four actions should you perform in sequence? To answer, move the appropriate actions from the list of actions to the answer area and arrange them in the correct order.

Select and Place:

Actions

- Select the referenced relationship type.
- Select the Booking_Guest intermediate measure group.
- Click the button of the cell intersection of the Booking measure group and the Guest dimension.
- Execute the Business Intelligence Wizard.
- Select the Dimension Usage tab.
- Select the many-to-many relationship type.

Answer Area

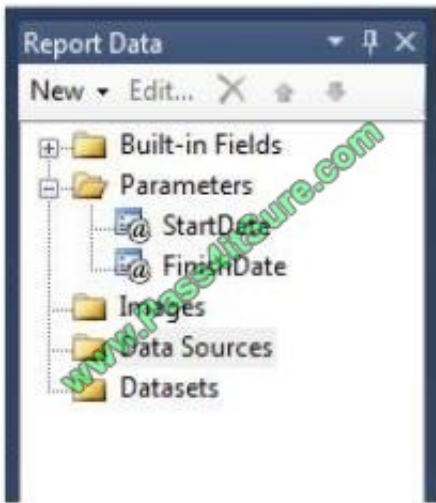
Correct Answer:



Actions	Answer Area
Select the referenced relationship type.	Select the Dimension Usage tab.
	Click the button of the cell intersection of the Booking measure group and the Guest dimension.
	Select the many-to-many relationship type.
Execute the Business Intelligence Wizard.	Select the Booking_Guest intermediate measure group.

QUESTION 6

You are developing a SQL Server Reporting Services (SSRS) report that sources data from a SQL Azure database and a SQL Server Analysis Services (SSAS) cube. The cube contains a date dimension and other dimensions. The report design includes two report parameters named StartDate and FinishDate as shown in the following diagram.



The Data Type property of the parameters is set to Date/Time.

You need to create the dataset based on the SSAS cube. You also need to ensure that the dataset is filtered by the existing report parameters.

Which three actions should you perform in sequence? (To answer, move the appropriate actions from the list of actions to the answer area and arrange them in the correct order.)

Select and Place:



Create a data source using the Microsoft SQL Server connection type.

Modify the parameter expressions of the dataset to include the **ToString()** function.

Create two report parameters with Date/Time data types to receive their default values from the two hidden datasets.

Create a dataset with a parameterized filter using a hierarchy from the date dimension that uses the **Contains** operator. Do not close the Dataset Properties window.

Create a dataset with a parameterized filter using a hierarchy from the date dimension that uses the **Range (Inclusive)** operator. Do not close the Dataset Properties window.

Create a data source using the Microsoft SQL Server Analysis Services connection type.

Write an expression in the dataset Parameter Value textbox that converts the Date/Time parameter values to be compatible with the dimension member.

Select the **Parameters** page and then assign an expression to each query parameter to convert the report parameter values to the appropriate date dimension hierarchy member keys.

Correct Answer:



Create a data source using the Microsoft SQL Server connection type.

Modify the parameter expressions of the dataset to include the **ToString()** function.

Create two report parameters with Date/Time data types to receive their default values from the two hidden datasets.

Create a dataset with a parameterized filter using a hierarchy from the date dimension that uses the **Contains** operator. Do not close the Dataset Properties window.

Write an expression in the dataset Parameter Value textbox that converts the Date/Time parameter values to be compatible with the dimension member.

Create a data source using the Microsoft SQL Server Analysis Services connection type.

Create a dataset with a parameterized filter using a hierarchy from the date dimension that uses the **Range (Inclusive)** operator. Do not close the Dataset Properties window.

Select the **Parameters** page and then assign an expression to each query parameter to convert the report parameter values to the appropriate date dimension hierarchy member keys.

QUESTION 7

You are developing a SQL Server Analysis Services (SSAS) cube. The cube contains several dimensions, a local measure group, and a linked measure group. Both measure groups use MOLAP partitions.

You need to write-enable one of the linked measure group partitions to support Microsoft Excel 2010 PivotTable What-If Analysis.

What should you do before the partition can be write-enabled?

- A. Ensure that the measure group measures only use semiadditive aggregation functions.
- B. Implement the cube as a local cube.
- C. Ensure that the measure group measures only use nonadditive aggregation functions
- D. Implement the linked measure group as a local measure group.

Correct Answer: D

QUESTION 8



You need to perform the pre-upgrade database backup operation by using SQL Server Management Studio (SSMS). How should you configure the backup options?

- A. Select the Apply compression check box. Select the Encrypt backup file check box and supply a password.
- B. Clear the Apply compression check box. Select the Encrypt backup file check box and supply a password.
- C. Clear the Apply compression check box. Clear the Encrypt backup file check box.
- D. Select the Apply compression check box. Clear the Encrypt backup file check box.

Correct Answer: A

QUESTION 9

You are designing a SQL Server Reporting Services (SSRS) report for a bank. The bank has Automated Teller Machines (ATMs) in several regions. ATM operational data is stored in a Windows Azure SQL Database database.

The report must use a map to display the location and status of the ATMs as shown in the following exhibit. (Click the Exhibit button.)



You need to ensure that the report displays only a user selected map region. Which source of spatial data should you



use for the map?

- A. Map gallery
- B. Bing Maps layer
- C. SQL Server spatial query
- D. ESRI shape file

Correct Answer: C

QUESTION 10

You need to use SQL Server Management Studio (SSMS) to make the SSAS databases available for application testing. What should you do?

- A. Detach the SSAS databases from the SSASCluster, and then attach them to SSAS01.
- B. Use the Import/Export Wizard to copy the databases from the production server to the development server.
- C. Script the databases as a Create script to a new window and then execute the script on SSAS01.
- D. Restore the SSAS databases from the latest backup to SSAS01.

Correct Answer: C

QUESTION 11

You are developing a SQL Server Analysis Services (SSAS) multidimensional project. The project file includes two cubes named Finance and Operations. The project also includes a dimension named Date.

The Date dimension includes two hierarchies named Fiscal and Calendar. The Date dimension has been added to both cubes.

You need to disable the Fiscal hierarchy in the Operations cube without impacting other database objects.

Which three actions should you perform in sequence? (To answer, move the appropriate actions from the list of actions to the answer area and arrange them in the correct order.)

Select and Place:



- Open the **Date** dimension in the dimension designer.
- Delete the **Fiscal** hierarchy from the **Operations** cube.
- Open the **Operations** cube in the cube designer.
- In the Properties window, set the **Enabled** property to **False**.
- In the Dimensions pane of the Cube Structure tab, select the **Fiscal** hierarchy of the **Date** dimension.
- In the Properties window, set the **Visible** property to **False**.
- In the Properties window, set the **AttributeHierarchyEnabled** property to **False**.
- In the Hierarchies pane of the dimension structure tab, select the **Fiscal** hierarchy.

Correct Answer:

- Open the **Date** dimension in the dimension designer.
- Delete the **Fiscal** hierarchy from the **Operations** cube.
-
-
-
- In the Properties window, set the **Visible** property to **False**.
- In the Properties window, set the **AttributeHierarchyEnabled** property to **False**.
- In the Hierarchies pane of the dimension structure tab, select the **Fiscal** hierarchy.

- Open the **Operations** cube in the cube designer.
- In the Dimensions pane of the Cube Structure tab, select the **Fiscal** hierarchy of the **Date** dimension.
- In the Properties window, set the **Enabled** property to **False**.

QUESTION 12

You need to ensure that all reports meet the reporting requirements.

What is the best way to achieve the goal? More than one answer choice may achieve the goal. Select the BEST answer.



- A. Create a report part. Publish the report part to a server that has SSRS installed. Add the report part to each new report that is created.
- B. Create a report part. Publish the report part to a SharePoint site. Add the report part to each new report that is created.
- C. Create a report. Copy the report to source code control. Create each new report by using the report template in source code control.
- D. Create a report. Copy the report to the PrivateAssemblies\ProjectItems\ReportProject folder in the Visual Studio directory. Create each new report by using the locally stored report

Correct Answer: D

[Latest 70-460 Dumps](#)

[70-460 VCE Dumps](#)

[70-460 Practice Test](#)



To Read the [Whole Q&As](#), please purchase the [Complete Version](#) from [Our website](#).

Try our product !

100% Guaranteed Success

100% Money Back Guarantee

365 Days Free Update

Instant Download After Purchase

24x7 Customer Support

Average 99.9% Success Rate

More than 800,000 Satisfied Customers Worldwide

Multi-Platform capabilities - [Windows](#), [Mac](#), [Android](#), [iPhone](#), [iPod](#), [iPad](#), [Kindle](#)

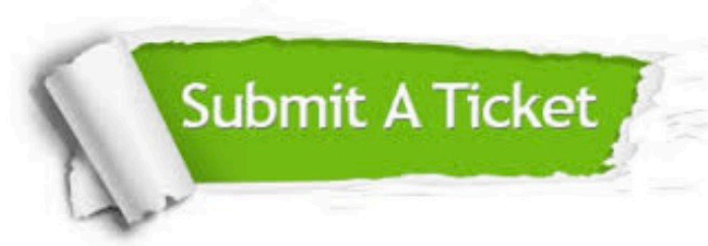
We provide exam PDF and VCE of Cisco, Microsoft, IBM, CompTIA, Oracle and other IT Certifications. You can view Vendor list of All Certification Exams offered:

<https://www.pass4itsure.com/allproducts>

Need Help

Please provide as much detail as possible so we can best assist you.

To update a previously submitted ticket:



 <p>One Year Free Update Free update is available within One Year after your purchase. After One Year, you will get 50% discounts for updating. And we are proud to boast a 24/7 efficient Customer Support system via Email.</p>	 <p>Money Back Guarantee To ensure that you are spending on quality products, we provide 100% money back guarantee for 30 days from the date of purchase.</p>	 <p>Security & Privacy We respect customer privacy. We use McAfee's security service to provide you with utmost security for your personal information & peace of mind.</p>
---	---	--

Any charges made through this site will appear as Global Simulators Limited.

All trademarks are the property of their respective owners.

Copyright © pass4itsure, All Rights Reserved.