



# 70-447<sup>Q&As</sup>

UPGRADE:MCDBA Skills to MCITP DB Admin by Using MS SQL 2005

## Pass Microsoft 70-447 Exam with 100% Guarantee

Free Download Real Questions & Answers **PDF** and **VCE** file from:

<https://www.pass4itsure.com/70-447.html>

100% Passing Guarantee  
100% Money Back Assurance

Following Questions and Answers are all new published by Microsoft  
Official Exam Center

-  **Instant Download** After Purchase
-  **100% Money Back** Guarantee
-  **365 Days** Free Update
-  **800,000+** Satisfied Customers



**QUESTION 1**

You are a database administrator for Company.com. One of the databases on a SQL Server 2005 computer contains a stored procedure. Users run this stored procedure to import data into a table. The stored procedure needs to use the TRUNCATE TABLE command before importing new data into the table. However, the users who run the stored procedure do not have permission to truncate the table. You need to provide a way for the stored procedure to truncate the table before it imports new data.

What should you do?

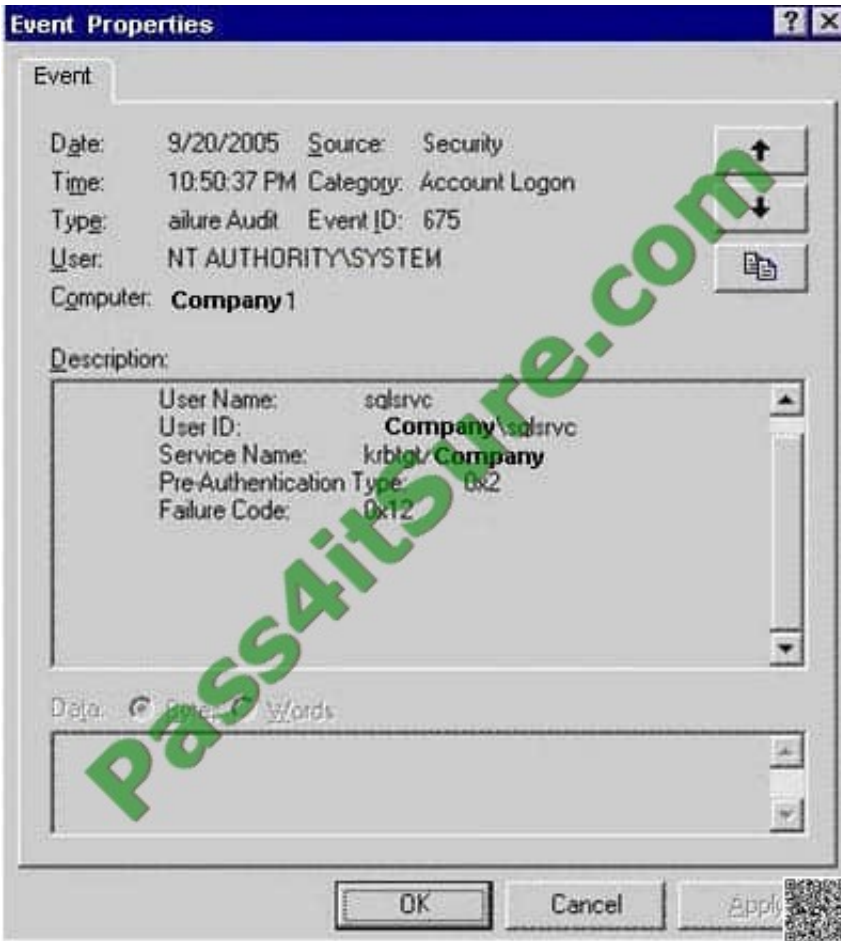
- A. Configure the stored procedure to use the EXECUTE AS command.
- B. Configure the stored procedure to be owned by the same database user as the table.
- C. Assign the users DELETE permission in the table.
- D. Add the users to the db\_datawriter fixed database role.

Correct Answer: A

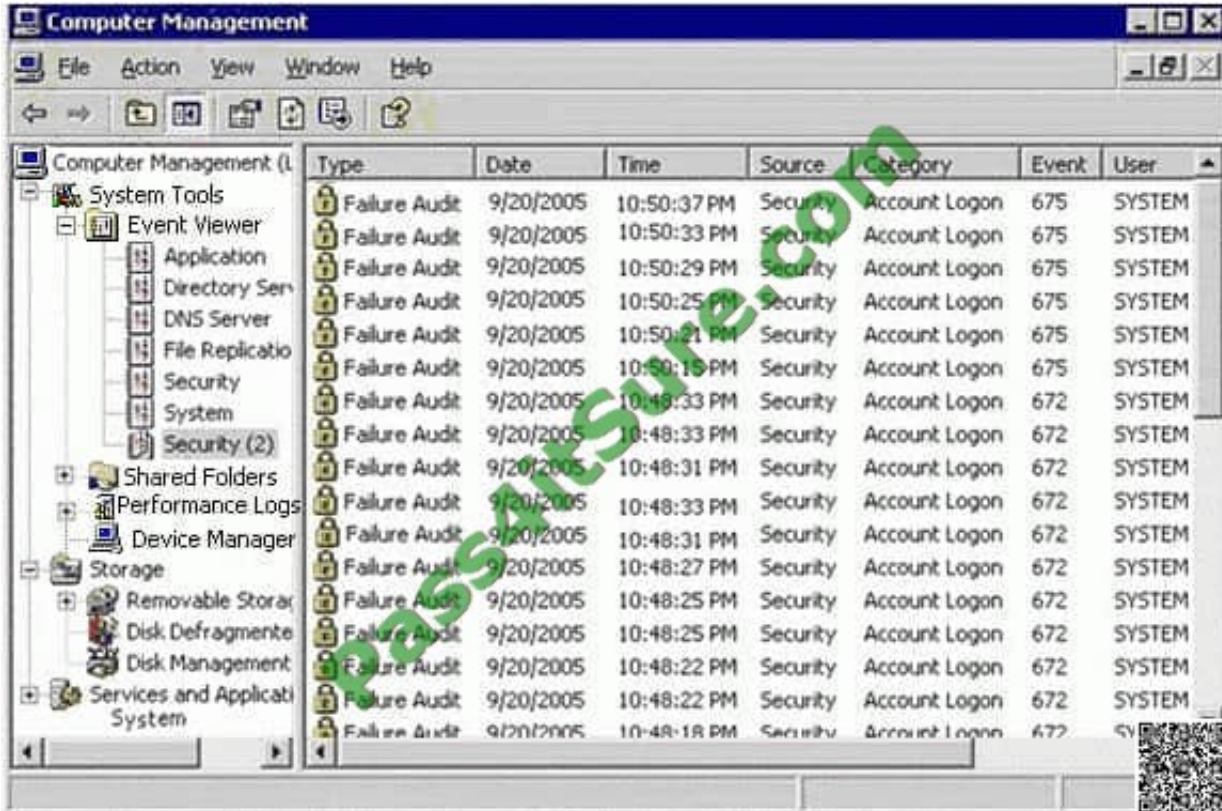
---

**QUESTION 2**

You work as DBA at Company.com. You administer a SQL Server 2005 computer named Company A. Company A replicates with other SQL Server computers and manages multiServer automation jobs. It also exports data to staging databases for export to a data warehouse. After a few months without incident, Company A fails to start after a reboot. You review the security log, which returns the results that the Security Log Results exhibit shows.



You then review an individual audit entry, which the Individual Audit Entry exhibit shows.



The Default Domain Group Policy object (GPO) is configured with a Password Policy and Account Lockout Policy as shown in the following table.

<b>Enforce password history:</b>	24 passwords remembered
<b>Maximum password age:</b>	42 days
<b>Minimum password age:</b>	1 days
<b>Minimum password length:</b>	7 characters
<b>Password reset meet complexity requirement</b>	<b>Enabled</b>
<b>Store passwords using reversible encryption:</b>	Disabled
<b>Account lockout duration:</b>	0
<b>Account lockout threshold:</b>	5
<b>Reset account lockout counter after:</b>	60 minutes

You need to ensure that Company A runs properly. What should you do?

- A. Unlock the Company \sqlsrvc account. Then, configure the account with a strong password. Configure the SQL Server services to use the new account password.
- B. Delete the current Company \sqlsrvc account. Then, create a new Company \sqlsrvc account and ensure a strong password. Finally, configure the account so that users cannot change the password. Configure the SQL Server services to use the new account password.
- C. Configure the Company \sqlsrvc account as a member of the local administrators group on Company A. Configure the SQL Server services to use the new account password.
- D. Enable the Company \sqlsrvc account. Then, change the password to a strong one. Finally, configure the account so



that users cannot change the password. Configure the SQL Server services to use the new account password.

Correct Answer: A

---

### QUESTION 3

You are a database administrator for your company. Your company uses a SQL Server 2005 application. The application executes a query that returns three columns of the nvarchar data type and one column of the XML data type. The query uses a WHERE clause that includes all three of the nvarchar columns. The table contains 5 million rows, and the query returns 50,000 rows. You need to improve the performance of the query.

What should you do?

- A. Create a composite index on the three nvarchar columns, and specify INCLUDE for the XML column.
- B. Create a primary XML index on the XML column.
- C. Create statistics on the nvarchar columns.
- D. Create a view that includes only the four columns that the query uses.

Correct Answer: A

---

### QUESTION 4

You need to review the list of expected services for SQLCLUST and disable any nonessential services.

Which two services should be disabled? (Each correct answer presents part of the solution. Choose two.)

- A. Cluster service
- B. World Wide Web Publishing service
- C. SQL Server Agent service
- D. Messenger service
- E. Server service

Correct Answer: BD

---

### QUESTION 5

You are the database administrator for your company. You manage a SQL Server 2005 database named Sales. You are given a SQL Server Profiler sample workload with queries to the Sales database on a typical day. You need to



evaluate the effectiveness of current indexing and the identify changes that would be appropriate.

What should you do first?

- A. Use the Index Tuning Wizard with the sample workload.
- B. Use SQL Server Profiler to run the sample workload.
- C. Create a query with the five stored procedures that are used the most frequently. Then click the Analyze Query in Database Engine Tuning Advisor button.
- D. Use the Database Engine Tuning Advisor (DTA) with the sample workload.

Correct Answer: D

---

#### QUESTION 6

You need to design a high-availability strategy for the proseware\_projects database. Your design must fulfill all business and technical requirements. Which strategy should you use?

- A. log shipping
- B. failover clustering
- C. database mirroring
- D. replication

Correct Answer:

---

#### QUESTION 7

You are a database administrator for Company.com. A software developer in the company is running the following query against a SQL Server 2005 database. `SELECT Surname FROM Employees WHERE UPPER(Surname) LIKE '\\COR%\\'` The software developer reports that the query runs quickly on a test database that has a small number of rows. However, the query runs very slowly on the production database that has millions of rows. The Surname column stores data in mixed case, by using case-sensitive collation. But the query needs to perform a case- insensitive search. You need to improve the performance of this query. However, you do not have permission to change the collation orders. And you cannot modify the application code that adds rows to the database.

Which three actions should you perform? (Each correct answer presents part of the solution. Choose three.)

- A. Create an index on the Surname column.
- B. Modify the query to include the following Transact-SQL statement. `SELECT Surname FROM Employees WHERE Surname LIKE UPPER('\\cor%\\')`
- C. Execute the following Transact-SQL statement. `ALTER TABLE Employees ADD Upper Surname AS UPPER(Surname)`



D. Execute the following Transact-SQL statement. ALTER TABLE Employees ADD Upper Surname AS CAST(Surname AS nvarchar)

E. Create an index on the Upper Surname column.

F. Modify the query to include the following Transact-SQL statement. SELECT Surname FROM Employees WHERE Upper Surname LIKE '\\COR%\\'

Correct Answer: CEF

---

### QUESTION 8

You are a database administrator for Company.com. You receive alerts reporting that several transactions on your SQL Server 2005 database have terminated due to a deadlock error. You need to find out the causes of the deadlocks. What should you do?

A. Use System Monitor to trace the Application instance of the Number of Deadlocks/sec counter in the SQL Locks object.

B. Use the sys.dm\_tran\_locks dynamic management view (DMV).

C. Run the Database Engine Tuning Advisor (DTA) and implement the recommendations.

D. Run SQL Server Profiler and create a trace with the Deadlock graph event group, and extract deadlock events.

Correct Answer: D

---

### QUESTION 9

You are a database administrator for your company. You administer a SQL Server 2005 computer that contains a database named Customers. The database includes a table named CustInfo. The table includes an identity column named CustID and an nvarchar column named CustName. Company policy requires that rows containing duplicate CustName values be removed from the CustInfo table once each year. However, rows cannot be removed from the CustInfo table until they have been manually examined and verified as being duplicates. You need to provide a way to identify potential duplicate rows for manual examination. You need to accomplish this goal by using the least amount of administrative effort.

What should you do?

A. Create a trigger for the CustInfo table that rolls back INSERT queries that contain duplicate data.

B. Use a SELECT INTO query that includes GROUP BY and HAVING clauses to create a new table that contains duplicate rows from the CustInfo table.

C. Create a new unique index on the CustName column. Specify IGNORE\_DUP\_KEY = ON when creating index.

D. On the CustName column, create a foreign key constraint that references a distinct list of CustName values.

Correct Answer: B

---



## QUESTION 10

You are a database administrator for your company. The company uses a database named VideoStore. The SQL statements used to create the Sales table in the VideoStore database, an existing index, and the two most common queries executed against this table are shown in the exhibit. (Click the Exhibit button.) The existing indexes have just been rebuilt. The VideoID and VideoTitle fields are highly selective. The RetailPrice, WholesalePrice and Genre fields have low selectivity. You need to optimize the performance of both queries while minimizing the size of the index.

What should you do?

```
CREATE TABLE Video.Sales
  (VideoID int identity (1,1) not null Primary Key nonclustered
  , VideoTitle varchar(25) not null
  , RetailPrice Money null
  , WholesalePrice Money not null
  , Genre char(15) null
  , BarCode char(20) Not null)

Create Clustered Index CL_videotitle on Video.Sales (Videotitle)

SELECT VideoID, VideoTitle, RetailPrice from Video.Sales ORDER BY VideoTitle

Select VideoTitle, Barcode, VideoID, WholesalePrice, Genre
FROM Video.Sales WHERE VideoID =5
```



- A. Create a clustered index on the VideoTitle and RetailPrice columns.
- B. Create a nonclustered index on the Barcode and VideoID fields and include the WholesalePrice and Genre fields.
- C. Create a nonclustered index on the VideoTitle, Barcode, VideoID, WholesalePrice, and Genre fields.
- D. Drop the clustered index on the VideoTitle field. Create a nonclustered index on the VideoTitle field.
- E. Alter the existing nonclustered index by using the REORGANIZE option.

Correct Answer: B

## QUESTION 11

You are the administrator of a SQL Server 2005 computer named SQL1. SQL1 runs three instances of SQL Server. Your company's disaster recovery plan includes having the ability to connect to the dedicated administrative connection on each instance of SQL Server. While testing this ability, you discover that you can connect to the dedicated administrative connection on SQL1's default instance. But you cannot connect to the dedicated administrative connection on the two other instances on SQL1. You verify that the instances are running and that client applications are able to access them. You also verify that the dedicated administrative connection is enabled for all instances. You





confirm that no other administrators are attempting to connect to any dedicated administrative connections on SQL1. You need to ensure that you can connect to the dedicated administrative connection on all three instances.

What should you do?

- A. Start the SQL Server Browser service. Configure the service to start automatically.
- B. Use the Sqlcmd.exe tool to make the dedicated administrative connection.
- C. Stop and restart the non-default instances of SQL Server.
- D. Reconfigure the default instance to use an administrative port number other than 1434.

Correct Answer: A

---

## QUESTION 12

You are a database administrator for your company. You administer a SQL Server 2005 database named Contracts. The Contracts database becomes corrupted. You perform a restore by using the following Transact-SQL script. RESTORE DATABASE Contracts FROM contracts\_bu\_device WITH CONTINUE\_AFTER\_ERROR, CHECKSUM, RECOVERY After the restore, the SQL Server logs show errors in some of the page restores. You need to repair the database pages that are corrupt. You need to achieve this goal by using the method that facilitates the fastest possible repair.

Which Transact-SQL statement should you use?

- A. DBCC CHECKDB (Contracts, REPAIR\_ALLOW\_DATA\_LOSS) WITH NO\_INFOMSGS
- B. ALTER DATABASE Contracts SET TORN\_PAGE\_DETECTION ON
- C. DBCC CHECKDB (Contracts, REPAIR\_ALLOW\_DATA\_LOSS) WITH TABLOCK
- D. ALTER DATABASE Contracts SET TRUSTWORTHY ON

Correct Answer: C

[Latest 70-447 Dumps](#)

[70-447 PDF Dumps](#)

[70-447 Study Guide](#)



To Read the [Whole Q&As](#), please purchase the [Complete Version](#) from [Our website](#).

## Try our product !

100% Guaranteed Success

100% Money Back Guarantee

365 Days Free Update

Instant Download After Purchase

24x7 Customer Support

Average 99.9% Success Rate

More than 800,000 Satisfied Customers Worldwide

Multi-Platform capabilities - [Windows](#), [Mac](#), [Android](#), [iPhone](#), [iPod](#), [iPad](#), [Kindle](#)

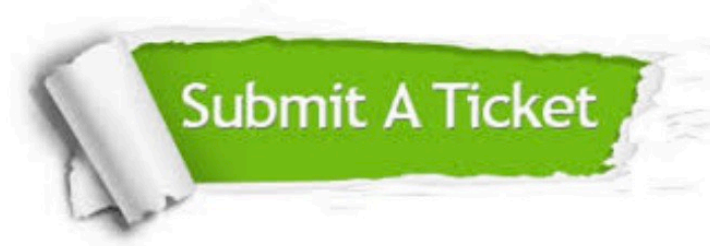
We provide exam PDF and VCE of Cisco, Microsoft, IBM, CompTIA, Oracle and other IT Certifications. You can view Vendor list of All Certification Exams offered:

<https://www.pass4itsure.com/allproducts>

## Need Help

Please provide as much detail as possible so we can best assist you.

To update a previously submitted ticket:



 <p><b>One Year Free Update</b> Free update is available within One Year after your purchase. After One Year, you will get 50% discounts for updating. And we are proud to boast a 24/7 efficient Customer Support system via Email.</p>	 <p><b>Money Back Guarantee</b> To ensure that you are spending on quality products, we provide 100% money back guarantee for 30 days from the date of purchase.</p>	 <p><b>Security &amp; Privacy</b> We respect customer privacy. We use McAfee's security service to provide you with utmost security for your personal information &amp; peace of mind.</p>
---	---	--

Any charges made through this site will appear as Global Simulators Limited.

All trademarks are the property of their respective owners.

Copyright © pass4itsure, All Rights Reserved.