



# 70-417<sup>Q&As</sup>

Upgrading Your Skills to MCSA Windows Server 2012

## Pass Microsoft 70-417 Exam with 100% Guarantee

Free Download Real Questions & Answers **PDF** and **VCE** file from:

<https://www.pass4itsure.com/70-417.html>

100% Passing Guarantee  
100% Money Back Assurance

Following Questions and Answers are all new published by Microsoft  
Official Exam Center

- ⚙ **Instant Download** After Purchase
- ⚙ **100% Money Back** Guarantee
- ⚙ **365 Days** Free Update
- ⚙ **800,000+** Satisfied Customers



**QUESTION 1**

Your role of Network Administrator at ABC.com includes the management of the Active Directory Domain Services (AD DS) domain named ABC.com. The network includes servers that run Windows Server 2012.

A Windows Server 2012 named ABC-DFS1 runs the Distributed File System (DFS) role. The company has purchased four new servers. You plan to install Windows Server 2012 with the failover clustering role on the new servers and configure all four servers as nodes in a single failover clustering cluster. You need to configure a highly available folder on the cluster. The folder will be a target in a DFS namespace and will be replicated to other servers on the network. You need to ensure that the folder can be configured as a DFS target and be

replicated to other servers using DFS replication (DFSR). How should you configure the failover cluster?

- A. You should configure the affinity option.
- B. You should configure the possible owner option.
- C. You should configure the Scale-Out File Server option
- D. You should configure the File Server for General Use option.
- E. You should configure the preferred owner option.

Correct Answer: D

---

**QUESTION 2****HOTSPOT**

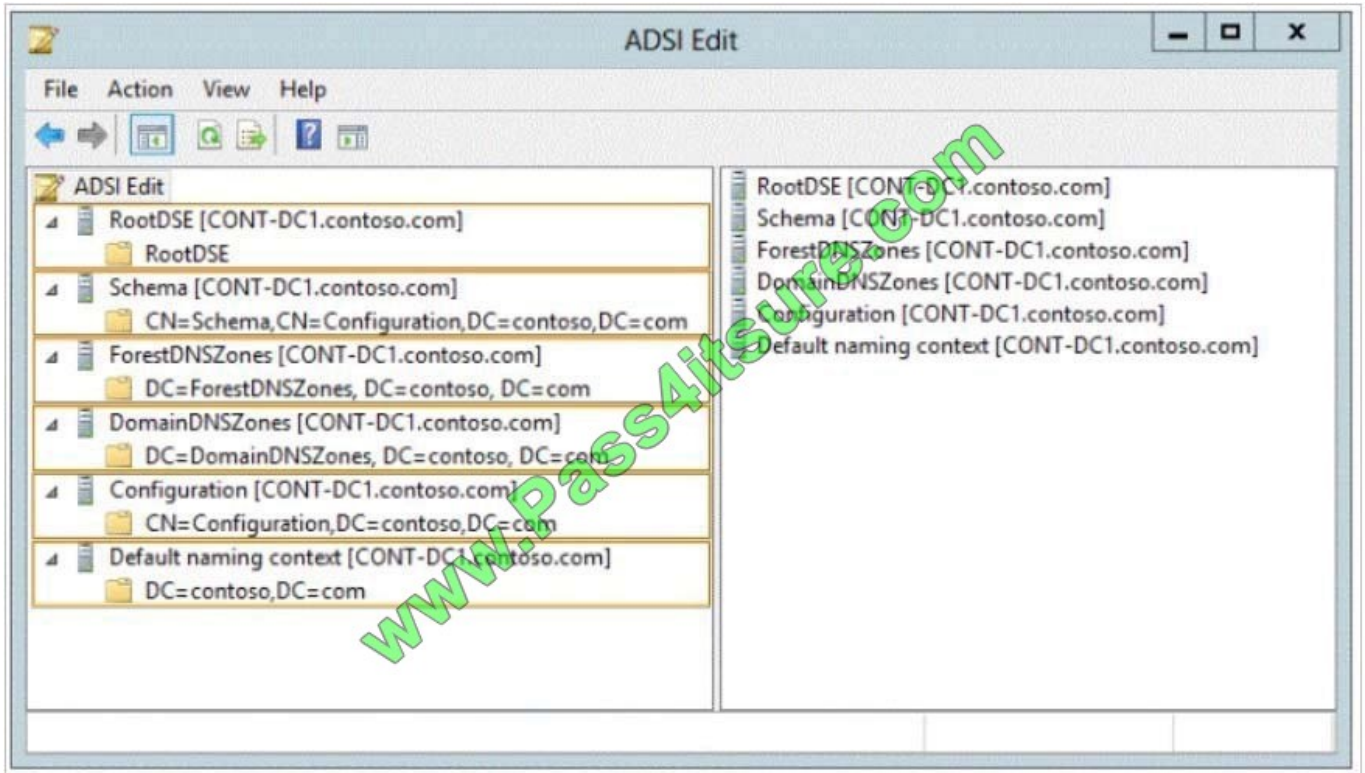
Your network contains an Active Directory forest named contoso.com. The forest contains a single domain. All domain controllers run Windows Server 2012 R2 and are configured as DNS servers. All DNS zones are Active Directory-integrated. Active Directory Recycle Bin is enabled.

You need to modify the amount of time deleted objects are retained in the Active Directory Recycle Bin.

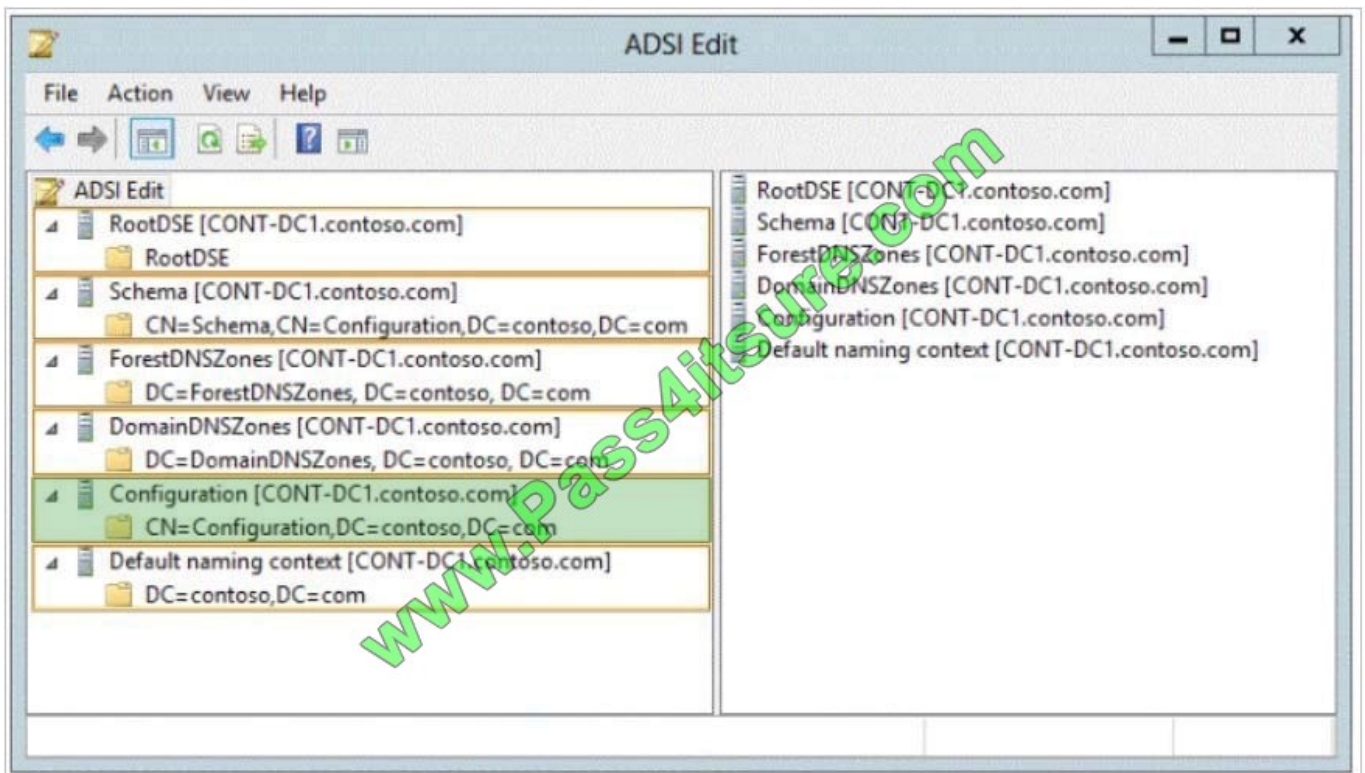
Which naming context should you use?

To answer, select the appropriate naming context in the answer area.

Hot Area:



Correct Answer:



Starting in Windows Server 2008 R2, Active Directory now implements a true recycle bin. No longer will you need an authoritative restore to recover deleted users, groups, OU's, or other objects. Instead, it is now possible to use PowerShell



commands to bring back objects with all their attributes, backlinks, group memberships, and metadata.

The amount of time that an object can be recovered is controlled by the Deleted Object Lifetime (DOL). This time range can be set on the msDS-deletedObjectLifetime attribute. By default, it will be the same number of days as the Tombstone

Lifetime (TSL). The TSL set for a new forest since Windows Server 2003 SP1 has been 180 days\*, and since by default DOL = TSL, the default number of days that an object can be restored is therefore 180 days. If tombstoneLifetime is NOT

SET or NULL, the tombstone lifetime is that of the Windows default: 60 days. This is all configurable by the administrator.

Set-ADObject -Identity "CN=Directory Service,CN=Windows NT,CN=Services,CN=Configuration,DC=contoso,DC=com" -Partition "CN=Configuration,DC=contoso,DC=com" -Replace: @("msDS-DeletedObjectLifetime" = 365)

msDS-deletedObjectLifetime

New to Windows Server 2008 R2

Is set on the "CN=Directory Service,CN=Windows NT, CN=Services,CN=Configuration, DC=COMPANY,DC=COM" container

Describes how long a deleted object will be restorable

To modify the deleted object lifetime by using Ldp.exe

To open Ldp.exe, click Start, click Run, and then type ldp.exe.

To connect and bind to the server hosting the forest root domain of your Active Directory environment, under Connections, click Connect, and then click Bind.

In the console tree, right-click the CN=Directory Service,CN=Windows NT,CN=Services,CN=Configuration container, and then click Modify.

In the Modify dialog box, in Edit Entry Attribute, type msDS-DeletedObjectLifeTime.

In the Modify dialog box, in Values, type the number of days that you want to set for the tombstone lifetime value. (The minimum is 3 days.)

In the Modify dialog box, under Operation click Replace, click Enter, and then click Run.

<http://technet.microsoft.com/en-us/library/dd392260%28v=ws.10%29.aspx>

<http://blogs.technet.com/b/askds/archive/2009/08/27/the-ad-recycle-bin-understanding-implementing-best-practices-and-troubleshooting.aspx>

---

### QUESTION 3

You manage a Hyper-V 2012 cluster by using System Center Virtual Machine Manager 2012 SP1. You need to ensure high availability for business-critical virtual machines (VMs) that host business-critical SQL Server databases.

Solution: You set the memory-weight threshold value to High for each business-critical VM,

Does this meet the goal?



A. Yes

B. No

Correct Answer: B

References: <https://technet.microsoft.com/en-us/library/jj628160.aspx>

#### QUESTION 4

Your network contains an Active Directory domain named contoso.com. The domain contains a server named Server1. Server1 runs Windows Server 2012 R2 and has the Hyper-V server role installed. On Server1, you create and start a virtual machine named VM1. VM1 is configured as shown in the following table.

Setting	Configuration
Minimum RAM	2048 MB
Maximum RAM	4096 MB
Disk type	Fixed size
Disk size	100 GB

You plan to create a checkpoint of VM1.

You need to recommend a solution to minimize the amount of disk space used for the checkpoint of VM1.

What should you do before you create the checkpoint?

A. Decrease the Minimum RAM.

B. Convert Disk1.vhd to a dynamically expanding disk.

C. Shut down VM1.

D. Run the Convert-VHD cmdlet.

Correct Answer: C

For checkpoints created when the virtual machine is stopped

The checkpoint contains the state of the hard disks only.

For checkpoints created when the virtual machine is running

The checkpoint contains the state of the hard disks and the data in memory.

Note: A checkpoint saves the state of each virtual hard disk that is attached to a virtual machine and all of the hard disk's contents, including application data files. For virtual machines on Hyper-V and VMware ESX Server hosts, a checkpoint

also saves the hardware configuration information. By creating checkpoints for a virtual machine, you can restore the



virtual machine to a previous state.

---

## QUESTION 5

### HOTSPOT

Your network contains one Active Directory forest named contoso.com.

The forest contains a single domain.

The domain contains the domain controllers is configured as shown in the following table.

Name	Site
DC1	Site1
DC2	Site2
DC3	Site3
DC4	Site4

The forest contains a member server named Server1. Server1 has an IP address of 172.16.10.66.



DistinguishedName: CN-172.16.10.0/26, CN-subnets, CN-Sites, CN-Configuration, Location Dc=Adatum, DC=com

Name: 172.16.10.0/26

ObjectClass: subnet

Object Guide: db362a6c-c0a9-4703-aaee-191083ab9ea5

Site: CN=Site1, CN=Sites, CN=Configuration, DC=Adatum, DC=Adatum, DC=com,

DistinguishedName: CN-172.16.10.64/26, CN-subnets, CN-Sites, CN-Configuration, Location Dc=Adatum, DC=com

Name: 172.16.10.64/26

ObjectClass: subnet

Object Guide: ef101558-3afa-41f1-9c5a-717453436fc1

Site: CN=Site2, CN=Sites, CN=Configuration, DC=Adatum, DC=Adatum, DC=com,

DistinguishedName: CN-172.16.10.192/26, CN-subnets, CN-Sites, CN-Configuration, Location Dc=Adatum, DC=com

Name: 172.16.10.192/26

ObjectClass: subnet

Object Guide: 33137047-6711-4195-940f-a463bbdab8fb

Site: CN=Site4, CN=Sites, CN=Configuration, DC=Adatum, DC=Adatum, DC=com,

DistinguishedName: CN-172.16.10.128/26, CN-subnets, CN-Sites, CN-Configuration, Location Dc=Adatum, DC=com

Name: 172.16.10.128/26

ObjectClass: subnet

Object Guide: ef5235ab-759b-4dc8-992a-c5ec1dae97a8

Site: CN=Site3, CN=Sites, CN=Configuration, DC=Adatum, DC=Adatum, DC=com,

The forest has the following Active Directory subnet configuration.

Use the drop down menus to select the answer choice that complete each statement.

Hot Area:



If you promote Server1 to a domain controller, its server object will be created in

<input type="checkbox"/>	Site1
<input type="checkbox"/>	Site2
<input type="checkbox"/>	Site3
<input type="checkbox"/>	Site4

If you perform an Active Directory search from a domain member that has an IP address of 172.16.10.116, you will attempt to connect

<input type="checkbox"/>	DC1
<input type="checkbox"/>	DC2
<input type="checkbox"/>	DC3
<input type="checkbox"/>	DC4

Correct Answer:

If you promote Server1 to a domain controller, its server object will be created in

<input type="checkbox"/>	Site1
<input checked="" type="checkbox"/>	Site2
<input type="checkbox"/>	Site3
<input type="checkbox"/>	Site4

If you perform an Active Directory search from a domain member that has an IP address of 172.16.10.116, you will attempt to connect

<input type="checkbox"/>	DC1
<input checked="" type="checkbox"/>	DC2
<input type="checkbox"/>	DC3
<input type="checkbox"/>	DC4

S1-172.16.10.66/26, /26 = 63 IP address, Site 2 is located in this subnet. You be automatically redirected on DC2 on your IP addressing.

## QUESTION 6

You create trusts in Windows Server 2008 with the New Trust Wizard. Which one of the following authentication types is being described below?



An authentication setting that permits unrestricted access by any users in the specified forest to all available shared resources that are located in any of the domains in the local forest.

- A. Domain-wide authentication
- B. None of these
- C. Selective authentication
- D. Forest-wide authentication

Correct Answer: D

---

### QUESTION 7

You plan to allow users to run internal applications from outside the company\\s network. You have a Windows Server 2012 R2 that has the Active Directory Federation Services (AD FS) role installed. You must secure on-premises resources

by using multi-factor authentication (MFA).

You need to design a solution to enforce different access levels for users with personal Windows 8.1 or iOS 8 devices.

Solution: You install a local instance of the MFA Server. You connect the instance to the Microsoft Azure MFA provider and then you use Microsoft Intune to manage personal devices.

Does this meet the goal?

- A. Yes
- B. No

Correct Answer: A

References: <https://docs.microsoft.com/en-us/intune/multi-factor-authentication>

---

### QUESTION 8

You create an OU named tempusers. Uou add several test users to that OU.

You want to delete the OU and receive an error.

`remove-adorganizationunit -identity "ou=tempusrs, dc=contoso,dc=com" -recursive.`

- A. Remove all the users from ou
- B. Modify the rights to your user account
- C. Set the confirm parameters to \$true
- D. Set the protectfromaccidental deletion to \$false

Correct Answer: D



References: <https://blogs.technet.microsoft.com/mconeill/2015/04/12/protect-ous-from-accidental-deletion/>

### QUESTION 9

Your network contains an Active Directory domain named contoso.com. The domain contains two domain controllers named DC1 and DC2.

You install Windows Server 2012 R2 on a new computer named DC3.

You need to manually configure DC3 as a domain controller.

Which tool should you use?

- A. winrm.exe
- B. Server Manager
- C. dcpromo.exe
- D. Active Directory Domains and Trusts

Correct Answer: B

When you try to DCpromo a Server 2012, you get this message:



### QUESTION 10

Your network contains an Active Directory domain named contoso.com. The domain contains servers named Server1 and Server2 that run Windows Server 2012 R2. Server1 has the Active Directory Federation Services server role installed. Server2 is a file server.

Your company introduces a Bring Your Own Device (BYOD) policy.

You need to ensure that users can use a personal device to access domain resources by using Single Sign-On (SSO) while they are connected to the internal network.

Which two actions should you perform? (Each correct answer presents part of the solution. Choose two.)



- A. Enable the Device Registration Service in Active Directory.
- B. Publish the Device Registration Service by using a Web Application Proxy.
- C. Configure Active Directory Federation Services (AD FS) for the Device Registration Service.
- D. Install the Work Folders role service on Server2.
- E. Create and configure a sync share on Server2.

Correct Answer: AC

\*Prepare your Active Directory forest to support devices This is a one-time operation that you must run to prepare your Active Directory forest to support devices. To prepare the Active Directory forest On your federation server, open a Windows PowerShell command window and type: Initialize-ADDeviceRegistration

\*Enable Device Registration Service on a federation server farm node To enable Device Registration Service 1.On your federation server, open a Windows PowerShell command window and type: Enable-AdfsDeviceRegistration 2.Repeat this step on each federation farm node in your AD FS farm.

---

#### QUESTION 11

Your network contains an Active Directory domain named contoso.com. The domain contains three servers. The servers are configured as shown in the following table.

Server name	Role
Server1	Direct Access and VPN
Server2	File Server
Server3	Hyper-V

You need to ensure that end-to-end encryption is used between clients and Server2 when the clients connect to the network by using DirectAccess. Which two actions should you perform? (Each correct answer presents part of the solution. Choose two.)

- A. From the Remote Access Management Console, reload the configuration.
- B. Add Server2 to a security group in Active Directory.
- C. Restart the IPsec Policy Agent service on Server2.
- D. From the Remote Access Management Console, modify the Infrastructure Servers settings.
- E. From the Remote Access Management Console, modify the Application Servers settings.

Correct Answer: BE

References: [https://docs.microsoft.com/en-us/previous-versions/windows/it-pro/windows-server-2012-R2-and-2012/jj134239\(v=ws.11\)#27-configuration-summary-and-alternate-gpos](https://docs.microsoft.com/en-us/previous-versions/windows/it-pro/windows-server-2012-R2-and-2012/jj134239(v=ws.11)#27-configuration-summary-and-alternate-gpos)

---

#### QUESTION 12

**DRAG DROP**

Your network contains an Active Directory domain named adatum.com. The domain contains a server named Server1 that runs Windows Server 2012 R2. Server1 is configured as a Network Policy Server (NPS) server and as a DHCP server.

You need to log all DHCP clients that have windows Firewall disabled.

Which three actions should you perform in sequence? To answer, move the three appropriate actions from the list of actions to the answer area and arrange them in the correct order.

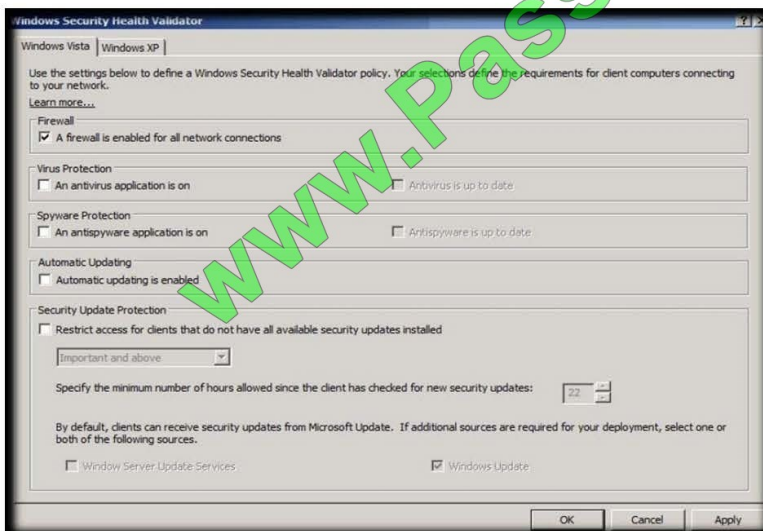
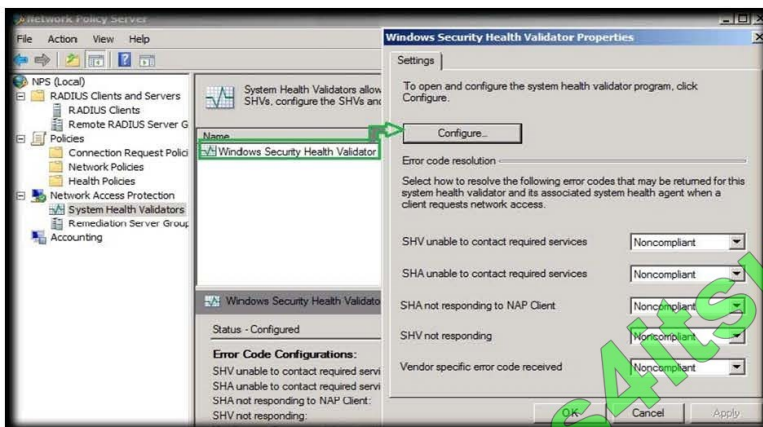
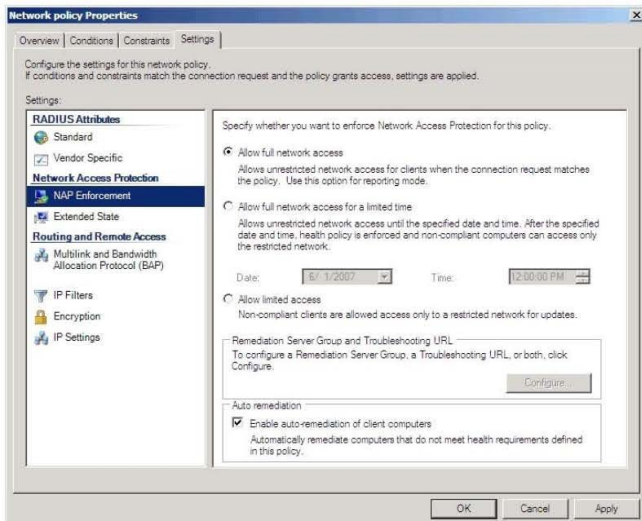
Select and Place:

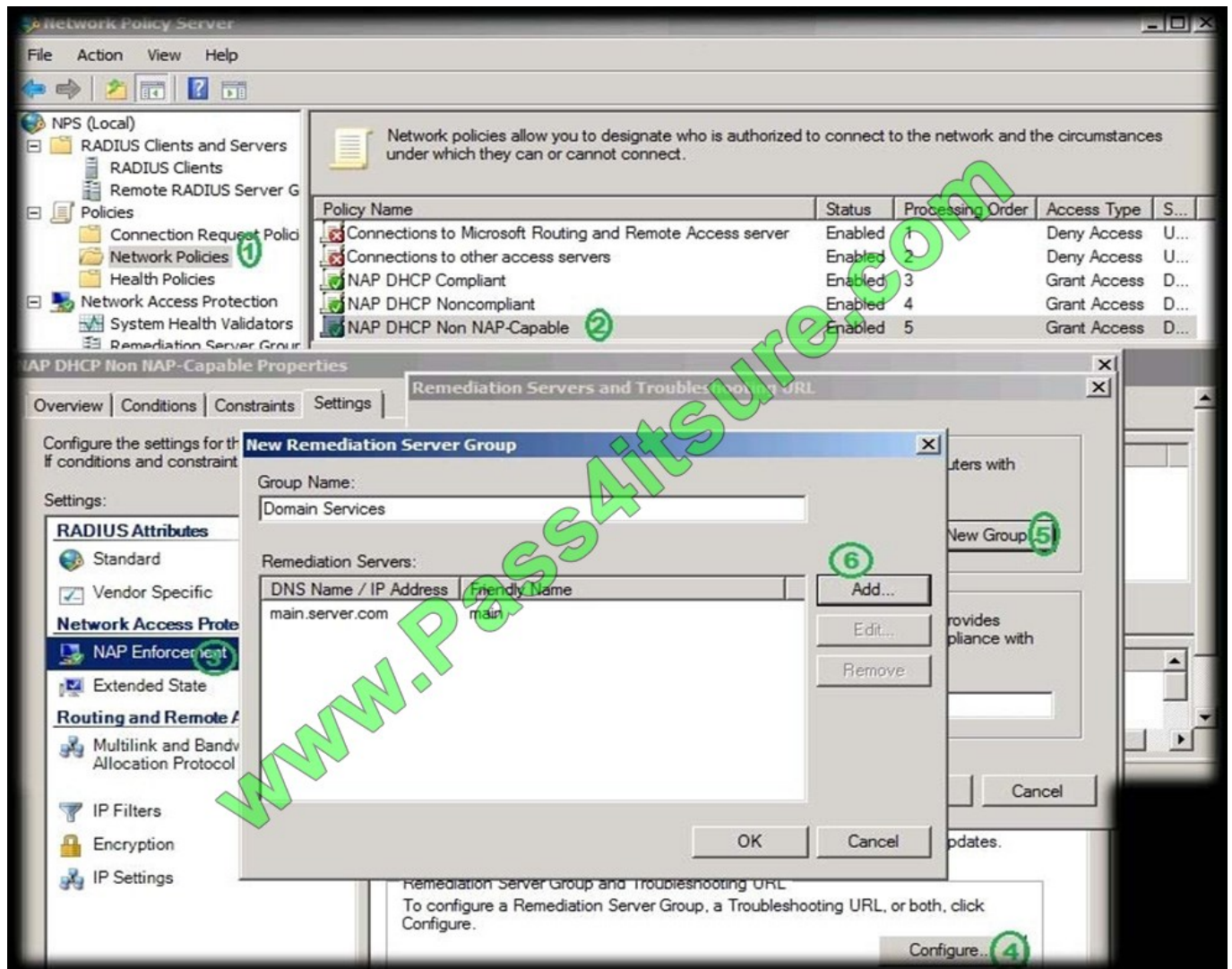
Actions	Answer Area
Create a connection request policy.	
Create a network policy.	
Create a remediation server group.	
Create a Windows Security Health Validator (WSHV) configuration.	
Create a health policy.	

Correct Answer:

Actions	Answer Area
Create a connection request policy.	Create a Windows Security Health Validator (WSHV) configuration.
	Create a health policy.
Create a remediation server group.	Create a network policy.

<http://technet.microsoft.com/es-es/library/dd314198%28v=ws.10%29.aspx> <http://technet.microsoft.com/es-es/magazine/2009.05.goat.aspx> <http://technet.microsoft.com/es-es/library/dd314173%28v=ws.10%29.aspx>  
<http://ripusudan.wordpress.com/2013/03/19/how-to-configure-nap-enforcement-for-dhcp/> <http://technet.microsoft.com/es-es/magazine/2009.05.goat.aspx> <http://technet.microsoft.com/en-us/library/dd125379%28v=ws.10%29.aspx>  
<http://technet.microsoft.com/en-us/library/cc772356%28v=ws.10%29.aspx>





\* With NPS, you can create client health policies using SHVs that allow NAP to detect, enforce, and remediate client computer configurations.

WSHA and WSHV provide the following functionality for NAP-capable computers:

The client computer has firewall software installed and enabled.

\* Example measurements of health include:

The operational status of Windows Firewall. Is the firewall enabled or disabled?

In NAP terminology, verifying that a computer meets your defined health requirements is called health policy validation. NPS performs health policy validation for NAP.

### QUESTION 13

Your network contains an Active Directory forest named contoso.com. The forest contains a single domain. All domain controllers run Windows Server 2012 R2. The domain contains two domain controllers. The domain controllers are configured as shown in the following table.



Domain controller name	Server type	Scheduled task
DC1	Physical server	Daily snapshots of Active Directory
DC2	Hyper-V virtual machine	Daily snapshots of the virtual machine Daily backups of the system state

Active Directory Recycle Bin is enabled.

You discover that a support technician accidentally removed 100 users from an Active Directory group named Group1 an hour ago.

You need to restore the membership of Group1.

What should you do?

- A. Perform an authoritative restore.
- B. Perform a non-authoritative restore.
- C. Recover the items by using Active Directory Recycle Bin.
- D. Apply a virtual machine snapshot to VM1.

Correct Answer: A

Authoritative restore allows the administrator to recover a domain controller, restore it to a specific point in time, and mark objects in Active Directory as being authoritative with respect to their replication partners. For example, you might need to perform an authoritative restore if an administrator inadvertently deletes an organizational unit containing a large number of users. If you restore the server from tape, the normal replication process would not restore the inadvertently deleted organizational unit. Authoritative restore allows you to mark the organizational unit as authoritative and force the replication process to restore it to all of the other domain controllers in the domain. Incorrect: Not C: A non-authoritative restore returns the domain controller to its state at the time of backup and then allows normal replication to overwrite that state with any changes that occurred after the backup was taken. After you restore the system state, the domain controller queries its replication partners. The replication partners replicate any changes to the restored domain controller, ensuring that the domain controller has an accurate and updated copy of the Active Directory database.

#### QUESTION 14

Your network contains a server named Server1 that runs Windows Server 2012. Server1 has the Hyper-V server role installed.

Server1 hosts four virtual machines named VM1, VM2, VM3, and VM4.

Server1 is configured as shown in the following table.



Hardware component	Configuration
Processor	Eight quad-core CPUs that have non-uniform memory access (NUMA)
Memory	32 GB of RAM
Disk	Two local 4-TB disks
Network	Eight network adapters VMQ-supported PCI-SIG-supported

VM2 sends and receives large amounts of data over the network.

You need to ensure that the network traffic of VM2 bypasses the virtual switches of the parent partition.

What should you configure?

- A. NUMA topology
- B. Resource control
- C. Resource metering
- D. Virtual Machine Chimney
- E. The VLAN ID
- F. Processor Compatibility
- G. The startup order
- H. Automatic Start Action
- I. Integration Services
- J. Port mirroring
- K. Single-root I/O virtualization

Correct Answer: K

Single-root I/O virtualization -capable network adapters can be assigned directly to a virtual machine to maximize network throughput while minimizing network latency and the CPU overhead required for processing network traffic.

References: [http://technet.microsoft.com/en-us/library/cc766320\(v=ws.10\).aspx](http://technet.microsoft.com/en-us/library/cc766320(v=ws.10).aspx) <http://technet.microsoft.com/en-us/library/hh831410.aspx> Exam Ref 70-410, Installing and Configuring Windows Server 2012, Chapter 3: Configure Hyper-V, Objective 3.1: Create and Configure virtual machine settings, p. 144 Training Guide: Installing and Configuring Windows Server 2012: Chapter 7: Hyper-V Virtualization, Lesson 2: Deploying and configuring virtual machines, p. 335

**QUESTION 15****HOTSPOT**

Your network contains two Hyper-V hosts that are configured as shown in the following table.

Host name	Configuration
Server1	<ul style="list-style-type: none"><li>• 1 Intel i7 processor</li><li>• 16 GB of memory</li><li>• 1 TB of hard disk space</li><li>• Two network adapters</li></ul>
Server2	<ul style="list-style-type: none"><li>• 4 Intel Xeon processors</li><li>• 64 GB of memory</li><li>• 4 TB of hard disk space</li><li>• 4 network adapters</li></ul>

You create a virtual machine on Server1 named VM1.

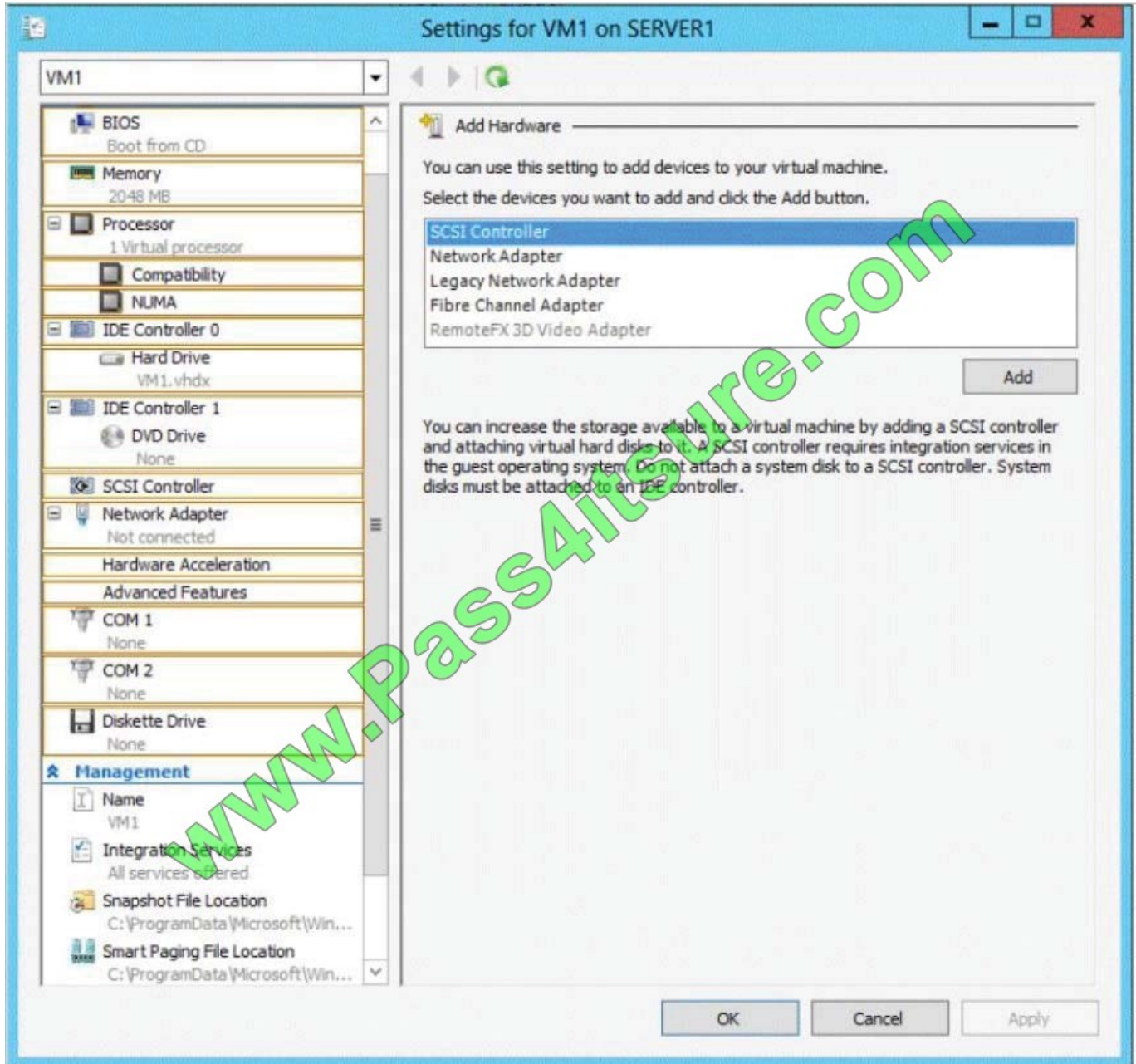
You plan to export VM1 from Server1 and import VM1 to Server2.

You need to ensure that you can start the imported copy of VM1 from snapshots.

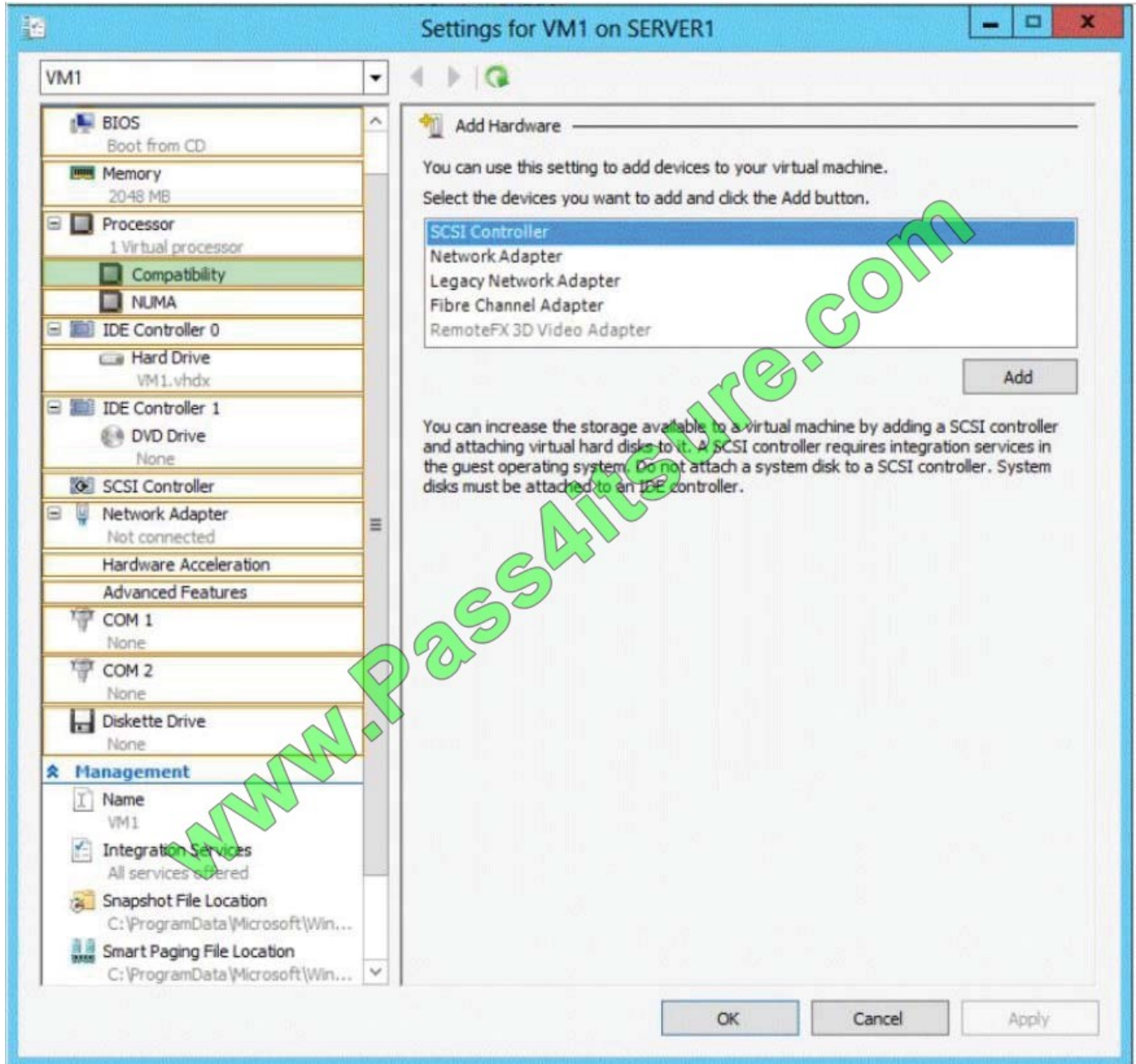
What should you configure on VM1?

To answer, select the appropriate node in the answer area.

Hot Area:



Correct Answer:



Note:

If the CPUs are from the same manufacturer but not from the same type, you may need to use Processor Compatibility.

(Incorrect) The network adapter is already disconnected.

[70-417 Study Guide](#)

[70-417 Exam Questions](#)

[70-417 Braindumps](#)



To Read the [Whole Q&As](#), please purchase the [Complete Version](#) from [Our website](#).

## Try our product !

100% Guaranteed Success

100% Money Back Guarantee

365 Days Free Update

Instant Download After Purchase

24x7 Customer Support

Average 99.9% Success Rate

More than 800,000 Satisfied Customers Worldwide

Multi-Platform capabilities - Windows, Mac, Android, iPhone, iPod, iPad, Kindle

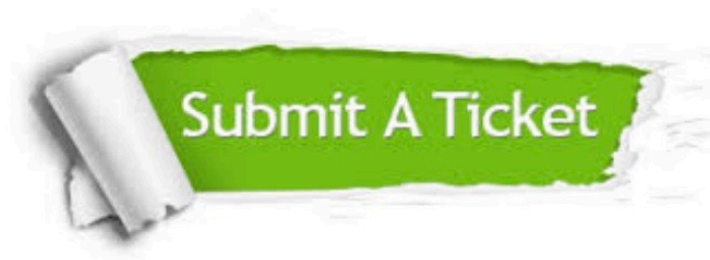
We provide exam PDF and VCE of Cisco, Microsoft, IBM, CompTIA, Oracle and other IT Certifications. You can view Vendor list of All Certification Exams offered:

<https://www.pass4itsure.com/allproducts>

## Need Help

Please provide as much detail as possible so we can best assist you.

To update a previously submitted ticket:



 <b>One Year Free Update</b> <p>Free update is available within One Year after your purchase. After One Year, you will get 50% discounts for updating. And we are proud to boast a 24/7 efficient Customer Support system via Email.</p>	 <b>Money Back Guarantee</b> <p>To ensure that you are spending on quality products, we provide 100% money back guarantee for 30 days from the date of purchase.</p>	 <b>Security &amp; Privacy</b> <p>We respect customer privacy. We use McAfee's security service to provide you with utmost security for your personal information &amp; peace of mind.</p>
---	---	--

Any charges made through this site will appear as Global Simulators Limited.

All trademarks are the property of their respective owners.

Copyright © pass4itsure, All Rights Reserved.