



70-416^{Q&As}

Implementing Desktop Application Environments

Pass Microsoft 70-416 Exam with 100% Guarantee

Free Download Real Questions & Answers **PDF** and **VCE** file from:

<https://www.pass4itsure.com/70-416.html>

100% Passing Guarantee
100% Money Back Assurance

Following Questions and Answers are all new published by Microsoft
Official Exam Center

-  **Instant Download** After Purchase
-  **100% Money Back** Guarantee
-  **365 Days** Free Update
-  **800,000+** Satisfied Customers



**QUESTION 1**

Your network contains an Active Directory domain named contoso.com. Client computers run either Windows 7 or Windows 8.

You plan to replace the client computers that run Windows 7.

You need to migrate the application settings and the configurations from the client computers that run Windows 7 to the client computers that run Windows 8.

What should you do?

- A. On the client computers that run Windows 7, run loadstate.exe. On the client computers that run Windows 8, run scanstate.exe.
- B. On the client computers that run Windows 7, run scanstate.exe. On the client computers that run Windows 8, run loadstate.exe.
- C. On a server that runs Windows Server 2012, install the Windows Server Migration Tools. Run the Export-SmigServerSetting cmdlet and the Import-SmigServerSetting cmdlet.
- D. On a server that runs Windows Server 2012, install the Windows Server Migration Tools. Run the Send-SmigServerData cmdlet and the Receive-SmigServerData cmdlet.

Correct Answer: B

QUESTION 2

Your network contains an Active Directory domain. The domain contains servers that run Windows Server 2012 and client computers that run Windows 8.

You have three applications named App1, App2, and App3. App1 and App2 can run on Windows 8. App3 can run only on Windows XP.

You need to recommend application deployment solutions that meet the following requirements:

App1 must be installed on all of the client computers in the domain automatically when the client computers restart.

App2 must be installed only when a user executes a .xyz file. App3 must be available on all of the client computers.

Which application deployment solution should you recommend for each application? To answer, drag the appropriate solution to the correct application in the answer area. Each solution may be used once, more than once, or not at all.

Additionally, you may need to drag the split bar between panes or scroll to view content.

Select and Place:



Solutions	Answer Area
Assign the application by using a Group Policy.	App1 Solution
Publish the application by using a Group Policy.	App2 Solution
Publish the application as a RemoteApp program.	App3 Solution
Deploy the application on a virtual machine on each client computer.	

Correct Answer:

Solutions	Answer Area
	App1 Assign the application by using a Group Policy.
	App2 Publish the application by using a Group Policy.
Publish the application as a RemoteApp program.	App3 Deploy the application on a virtual machine on each client computer.

QUESTION 3

Your network contains servers that run Windows Server 2012 and client computers that run Windows 8.

You plan to deploy an application named App1 to 10 client computers. App1 only runs on Windows XP.

You need to recommend an application deployment strategy for App1.

What should you include in the recommendation?

- A. From a Group Policy object (GPO), assign App1 to the 10 client computers.
- B. From a Microsoft Application Virtualization (App-V) publishing server, publish App1 as an App-V package.
- C. From a Hyper-V host, install App1 on 10 virtual machines that are enabled for RemoteApp for Hyper.
- D. From a Remote Desktop Services (RDS) server, deploy App1 as a RemoteApp program.

Correct Answer: C

XP cannot be a publishing server or sequencer.

**QUESTION 4**

Your network contains an Active Directory domain named contoso.com. The domain contains three member servers named Server1, Server2, and Server3. Server1, Server2, and Server3 have the Hyper-V server role installed.

Server3 is located in a disaster recovery datacenter.

Server1 and Server2 are members of a failover cluster named Cluster1. Cluster1 has the Hyper-V Replica Broker failover clustering role installed. You name the role Broker1.

You plan to use Server3 as a Hyper-V replica for the virtual machines hosted in Cluster1. The replication of the virtual machines to Server3 must be encrypted.

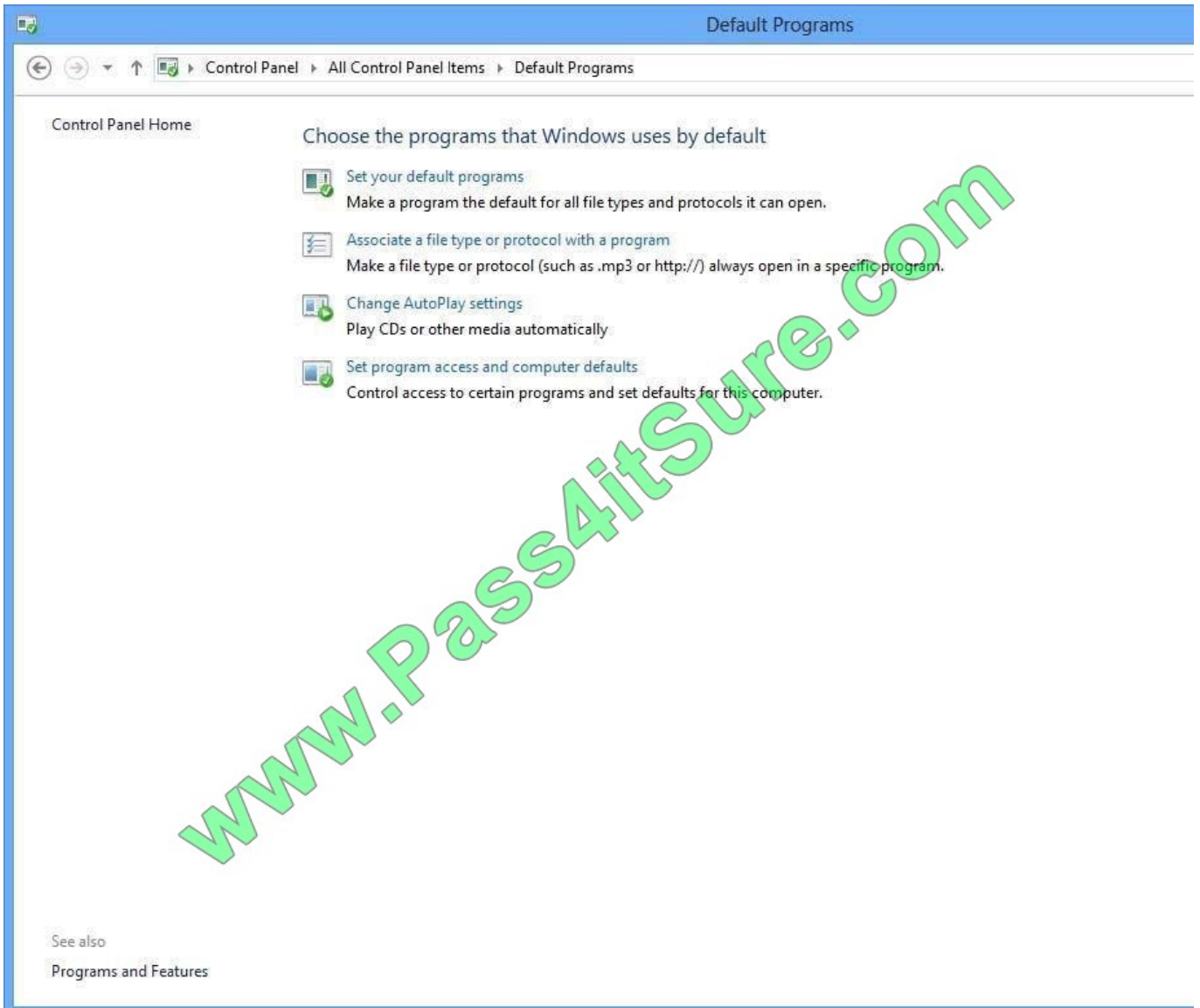
You need to identify which certificate must be purchased to implement the planned Hyper-V replicas.

Which certificate should you identify? More than one answer choice may achieve the goal. Select the BEST answer.

- A. A certificate that contains cluster1.contoso.com as the subject name
- B. A certificate that contains Server1.contoso.com as the subject name and server2.contoso.com as a Subject Alternative Name
- C. A certificate that contains broker1.contoso.com as the subject name
- D. A certificate that contains contoso.com as the subject name

Correct Answer: C

QUESTION 5



Your network contains an Active Directory domain named contoso.com. The domain has Remote Desktop Services (RDS) deployed. The domain contains a server named Server1. Server1 has the Remote Desktop Licensing role service

installed.

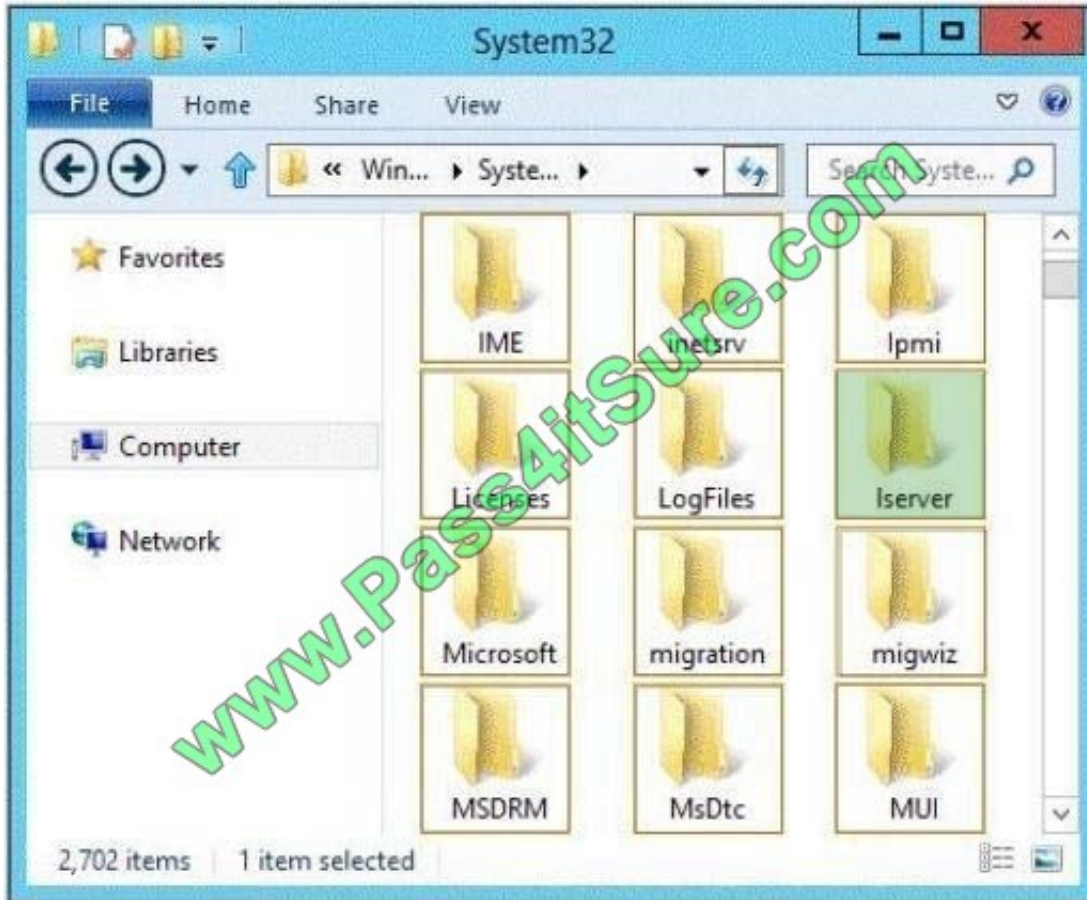
You need to back up the Remote Desktop Licensing (RD Licensing) database.

Which folder should you include in the backup? To answer, select the appropriate folder in the answer area.

Hot Area:



Correct Answer:



Terminal Services License Server Database Availability

This topic has not yet been rated - Rate this topic

Updated: January 5, 2012

Applies To: Windows Server 2008

When the Terminal Services Licensing (TS Licensing) role service is installed, a database is created in which to hold information about the Terminal Services

The location of the TS Licensing database can be specified during the TS Licensing role service installation. The database location must be a local folder on the server in the %systemroot%\system32\Iserver folder. You can confirm the location of the TS Licensing database by using **Review Configuration** in the TS Licensing

QUESTION 6

Your network contains an Active Directory domain named contoso.com.

You use Microsoft Application Virtualization (App-V) 5.0 to package and deploy applications to the network.

You need to deploy an application named App1. The solution must ensure that an add-on for App1 is also installed.

Which five actions should you perform? To answer, move the five appropriate actions from the list of actions to the answer area and arrange them in the correct order.



Select and Place:

Actions	Answer Area
Create a connection group.	
Sequence the add-on.	
Sequence App1.	
Publish the packages.	
Add the packages to the publishing server.	
Publish the connection group.	

Correct Answer:

Actions	Answer Area
	Sequence App1.
	Sequence the add-on.
	Add the packages to the publishing server.
Publish the packages.	Create a connection group.
	Publish the connection group.

Box 1: Sequence App1

First sequence the application.

Box 2: Sequence the add-on

Then sequence the add-on.

Box 3: Add the packages to the publishing server.

Box 4: Create a connection group.

App1 and the add-on are added to the connection group.

Box 5: Publish the connection group.

Note:

* At a high level, virtual applications management with Configuration Manager requires sequencing applications, distributing virtual applications to end-users and client devices using Configuration Manager deployments, and finally,



publishing those applications for use.

* Connection Groups group one or more App-V packages to enable member applications in these packages to interact with one another while maintaining isolation from the rest of the system. This gives sequencing engineers the flexibility to maintain packages independently and removes the redundancy of adding the same application several times onto a machine.

* The Microsoft Application Virtualization (App-V) 5.0 Sequencer enables you to create the following three types of virtualized application packages: Standard application Add-on or plug-in Middleware

QUESTION 7

Your network contains servers that run Windows Server 2012 and client computers that run Windows 8.

You have a standard company image named Image.wim that contains a third-party application named Appl. Image.wim only contains one image. App1 uses a dynamic link library (DLL) file stored in C:\AppData.

A new version of App1 named App2 is available.

You need to update the DLL file in Image.wim. You want to achieve this goal by using the minimum amount of administrative effort.

Which three actions should you perform? To answer, move the three appropriate actions from the list of actions to the answer area and arrange them in the correct order.

Select and Place:

Actions	Answer Area
Run <code>dism.exe /unmount-wim /mountdir:c:\mount /commit.</code>	
Run <code>dism.exe /mount-wim /wimfile:image.wim /index:1 /mountdir:c:\mount.</code>	
Copy the new DLL of App1 to C:\AppData.	
Copy the new DLL of App1 to C:\Mount\AppData.	
Run <code>dism.exe /online /add-package:app2.dll.</code>	
Run <code>dism.exe /mount-wim /wimfile:image.wim /index:1 /mountdir:c:\.</code>	

Correct Answer:



Actions	Answer Area
	Run <code>dism.exe /mount-wim /wimfile:image.wim /index:1 /mountdir:c:\mount</code> .
	Copy the new DLL of App1 to C:\Mount\AppData.
Copy the new DLL of App1 to C:\AppData.	
	Run <code>dism.exe /unmount-wim /mountdir:c:\mount /commit</code> .
Run <code>dism.exe /online /add-package:app2.dll</code> .	
Run <code>dism.exe /mount-wim /wimfile:image.wim /index:1 /mountdir:c:\</code> .	

A mount directory needs to be created before mounting an image. You would not mount an image to the root of c. Also the question only asks you to update the dll and the image isn't online.

QUESTION 8

You are an enterprise administrator for your company, which is named Contoso, Ltd.

You plan to publish applications to virtual desktops by using Microsoft Application Virtualization (App-V) 5.0. You need to recommend a solution to prevent the virtual desktops from caching App-V 5.0 packages to disk.

What should you include in the recommendation?

- A. Dynamic Memory
- B. Non-uniform memory access (NUMA)
- C. A dynamic user configuration file
- D. Shared Content Store Mode

Correct Answer: D

QUESTION 9

You need to ensure that the members of Adatum\ResearchManagers have priority to the system resources on the RD Session Host servers. The solution must meet the technical requirements.

- A. On the RD Session Host servers, configure the Fair Share CPU Scheduling settings.



- B. On the RD Connection Broker servers, configure the collection properties.
- C. On the RD Session Host servers, install and configure the Windows System Resource Manager feature.
- D. On the RD Session Host servers, install and configure the Windows Process Activation Service feature.

Correct Answer: C

QUESTION 10

You need to configure the virtual desktops for the Miami office users. The solution must meet the technical requirements. What should you create?

- A. An unmanaged personal virtual desktop collection
- B. An unmanaged pooled virtual desktop collection
- C. A managed pooled virtual desktop collection
- D. A managed personal virtual desktop collection

Correct Answer: C

QUESTION 11

Your network contains an Active Directory domain named contoso.com. The domain contains four servers named Server1, Server2, Server3, and Server4. The domain contains a RemoteApp farm.

You install the Remote Desktop Connection Broker role service on Server1 and Server2. You need to recommend a Remote Desktop solution to ensure that users can reconnect to existing sessions if a single server fails.

What should you recommend deploying on Server3 and Server4? To answer, drag the appropriate software to the correct server in the answer area. Each software may be used once, more than once, or not at all. Additionally, you may need to drag the split bar between panes or scroll to view content.

Select and Place:



Software	Answer Area
Failover Clustering	Server3 Software
Microsoft SQL Server 2012	Software
Network Load Balancing (NLB)	Server4 Software
Windows Internal Database	Software

Correct Answer:

Software	Answer Area
Failover Clustering	Server3 Microsoft SQL Server 2012
Microsoft SQL Server 2012	Failover Clustering
Network Load Balancing (NLB)	Server4 Microsoft SQL Server 2012
Windows Internal Database	Failover Clustering

Server3 Box 1: Microsoft SQL Server 2012 Box 2: Failover clustering Server4 Box 1: Microsoft SQL Server 2012 Box 2: Failover clustering

Note:

* One requirement for RD Connection Broker high availability is the use of SQL Server.

*Configure RD Connection Broker in Windows Server 2012 with SQL Server 2012 AlwaysOn Failover Cluster Instances:

1. Create a SQL Server 2012 Failover Cluster with at least 2 Failover Cluster Instances
2. Configure RD Connection Broker high availability with Windows Server 2012 using the following database connection string:

DRIVER=SQL Server Native Client 11.0;SERVER=;

Trusted_Connection=Yes;APP=Remote Desktop Services Connection

Broker;DATABASE=;

Incorrect answers:

* Load balancing does improves performance, but does not provide redundancy.



* Windows Internal Database:

Windows Internal Database (codenamed WYukon, sometimes referred to as SQL Server Embedded Edition) is a variant of SQL Server Express 2005 that is included with Windows Server 2008 and Windows Server 2008 R2, and is included

with other free Microsoft products released after 2007 that require an SQL Server database backend. Windows Internal Database is not available as a standalone product for use by end-user applications; Microsoft provides SQL Server

Express and Microsoft SQL Server for this purpose.

Additionally, it is designed to only be accessible to Windows Services running on the same machine.

QUESTION 12

You plan to deploy three Remote Desktop Gateway (RD Gateway) servers.

You need to recommend a solution to ensure that if a single RD Gateway server fails, users can continue to access resources through the other RD Gateway servers.

A. Network Load Balancing (NLB)

B. Hyper-V replicas

C. Failover Clustering

D. DNS round robin

Correct Answer: A

[Latest 70-416 Dumps](#)

[70-416 PDF Dumps](#)

[70-416 Exam Questions](#)



To Read the [Whole Q&As](#), please purchase the [Complete Version](#) from [Our website](#).

Try our product !

100% Guaranteed Success

100% Money Back Guarantee

365 Days Free Update

Instant Download After Purchase

24x7 Customer Support

Average 99.9% Success Rate

More than 800,000 Satisfied Customers Worldwide

Multi-Platform capabilities - [Windows](#), [Mac](#), [Android](#), [iPhone](#), [iPod](#), [iPad](#), [Kindle](#)

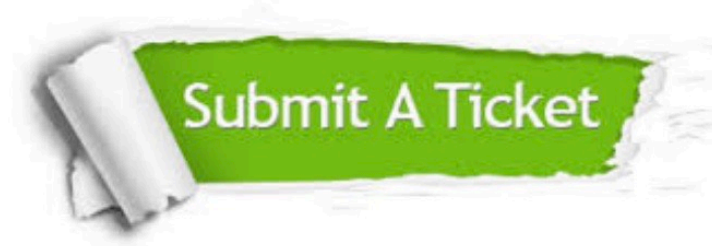
We provide exam PDF and VCE of Cisco, Microsoft, IBM, CompTIA, Oracle and other IT Certifications. You can view Vendor list of All Certification Exams offered:

<https://www.pass4itsure.com/allproducts>

Need Help

Please provide as much detail as possible so we can best assist you.

To update a previously submitted ticket:



 <p>One Year Free Update Free update is available within One Year after your purchase. After One Year, you will get 50% discounts for updating. And we are proud to boast a 24/7 efficient Customer Support system via Email.</p>	 <p>Money Back Guarantee To ensure that you are spending on quality products, we provide 100% money back guarantee for 30 days from the date of purchase.</p>	 <p>Security & Privacy We respect customer privacy. We use McAfee's security service to provide you with utmost security for your personal information & peace of mind.</p>
---	---	--

Any charges made through this site will appear as Global Simulators Limited.

All trademarks are the property of their respective owners.

Copyright © pass4itsure, All Rights Reserved.