



70-345^{Q&As}

Designing and Deploying Microsoft Exchange Server 2016

Pass Microsoft 70-345 Exam with 100% Guarantee

Free Download Real Questions & Answers **PDF** and **VCE** file from:

<https://www.pass4itsure.com/70-345.html>

100% Passing Guarantee
100% Money Back Assurance

Following Questions and Answers are all new published by Microsoft
Official Exam Center

-  **Instant Download** After Purchase
-  **100% Money Back** Guarantee
-  **365 Days** Free Update
-  **800,000+** Satisfied Customers



**QUESTION 1**

You have an Exchange Server 2016 on-premises organization and a Microsoft Office 365 tenant.

All mailboxes are hosted on-premises.

You need to implement an archiving solution for all users.

The solution must ensure that all mailbox content older than 18 months is moved to Personal Archives in Office 365.

What should you implement?

- A. A default policy tag (DPT)
- B. A retention policy
- C. A personal tag
- D. A retention policy tag (RPT)
- E. A retention hold

Correct Answer: B

QUESTION 2

You manage an Exchange Server 2016 organization in an Active Directory forest that contains three sites.

The sites are located in Chicago, Los Angeles, and New York.

A database availability group (DAG) named DAG1 contains eight mailbox servers in the Los Angeles site and eight mailbox servers in the New York site.

The servers run Windows Server 2012 R2. The Los Angeles and New York sites both have independent network access to the Chicago site. You need to configure the environment to provide the organization with the best chance of surviving

a service outage if a site or a WAN link fails.

Additionally, the New York site must be considered the primary data center and given preference for survival.

Which two actions should you perform? Each correct answer presents part of the solution.

- A. Add an additional Exchange server to DAG1 and place it in the New York site.
- B. Place the cluster core resource group in the Chicago site.
- C. Place the file share witness in the Chicago site.
- D. Add an additional Exchange server to DAG1 and place it in the Chicago site.
- E. Place the cluster core resource group in the New York site.



F. Place the file share witness in the New York site.

Correct Answer: CE

You should place the file share witness in the Chicago site. Placing the file share witness in Chicago would give both New York and Los Angeles an opportunity to maintain quorum in the event that the other were to become unavailable. You should place the cluster core resource group in the New York site. Placing the cluster core resource group in New York would give that site an advantage toward maintaining quorum if the network link between New York and Chicago were to go down due to the arbitration delay. All members of the cluster except for the member owning the cluster core resource group must wait for a period of time equal to the arbitration delay before attempting to lock the file share witness (six seconds by default). The site with the member that locks the file share witness will maintain quorum. You should not place the file share witness in the New York site. A loss of the New York site would result in the cluster losing quorum across both sites and all databases dismounting. You should not add an additional Exchange server to DAG1 and place it in the New York site. Adding an additional Exchange server to the DAG in New York is incorrect because the DAG is already at its maximum capacity of sixteen nodes. You should not add an additional Exchange server to DAG1 and place it in the Chicago site. Adding an additional Exchange server to the DAG in Chicago is incorrect because the DAG is already at its maximum capacity of sixteen nodes. You should not place the cluster core resource group in the Chicago site. The cluster core resource group cannot be placed in Chicago because there are no cluster members there, and you must place the file share witness there. The cluster core resource group cannot be owned by the file share witness server.

QUESTION 3

Your company has a data center. The data center contains a server that has Exchange Server 2016 and the Mailbox server role installed. Outlook Anywhere clients connect to the Mailbox server by using the name outlook.contoso.com.

The company plans to open a second data center and to provision a database availability group (DAG) that spans both data centers.

You need to ensure that Outlook Anywhere clients can connect if one of the data centers becomes unavailable.

What should you add to DNS?

- A. 1 A record
- B. 1 MX record
- C. 2 SRV records
- D. 2 TXT records

Correct Answer: A

QUESTION 4

HOTSPOT

You have an Exchange Server 2016 organization.

You have a mailbox database named PF_DB1 that contains a public folder mailbox named PF1. PF1 contains a public folder named Marketing.



Three weeks ago, a user deleted the Marketing folder.

You restore the database files from the last full backup to a recovery database named R_DB1.

You need to recover Marketing folder.

What command should you run? To answer, select appropriate options in the answer area.

Hot Area:



Correct Answer:



QUESTION 5

Your company has one Exchange Server 2016 database availability group (DAG) across two data centers.

You need to load balance a single namespace across both data centers. The solution must be able to check service health check.

Which two solutions should you use? Each correct answer presents part of the solution.

- A. A Layer 7 load balancer
- B. An unbound model
- C. A bound model
- D. DNS round-robin

Correct Answer: AB

You should use an unbound model. With an unbound model, a single namespace is used across two datacenters.



You should use a Layer 7 load balancer. In this scenario, a DAG has active databases across two datacenters.

Users are distributed with a load balancer across the two datacenters.

A Layer 7 load balancer checks service health at the application level.

You should not use a bound model. A bound model uses two separate namespaces across two datacenters.

You should not use DNS round-robin. DNS round-robin load balancing uses a single namespace, but it does not check the health of the application or server.

QUESTION 6

HOTSPOT

You deploy a server named ex01 .contoso.com that has Exchange Server 2016 installed. You need to ensure that when users connect to the URL of <http://ex01.contoso.com>. they access Outlook on the web over a secure connection.

How should you configure the Default Web Site? To answer, select appropriate options in the selected area.

Hot Area:



Correct Answer:





QUESTION 7

You need to assign user roles to two administrative users to meet the following requirements:

A user named AdminUser1 must be able to reset user account passwords.

A user named AdminUser2 must be able to create retention policies and message classifications.

The solution must meet the security requirements.

To which role should you assign each user? To answer, select the appropriate options in the answer area.

NOTE: Each correct selection is worth one point.

Hot Area:

Answer Area

AdminUser1:

Help Desk
Organization Management
Recipient Management
Records Management
Server Management
View-Only Organization Management

AdminUser2:

Help Desk
Organization Management
Recipient Management
Records Management
Server Management
View-Only Organization Management

Correct Answer:



Answer Area

AdminUser1:

I Help Desk
Organization Management
Recipient Management
Records Management
Server Management
View-Only Organization Management

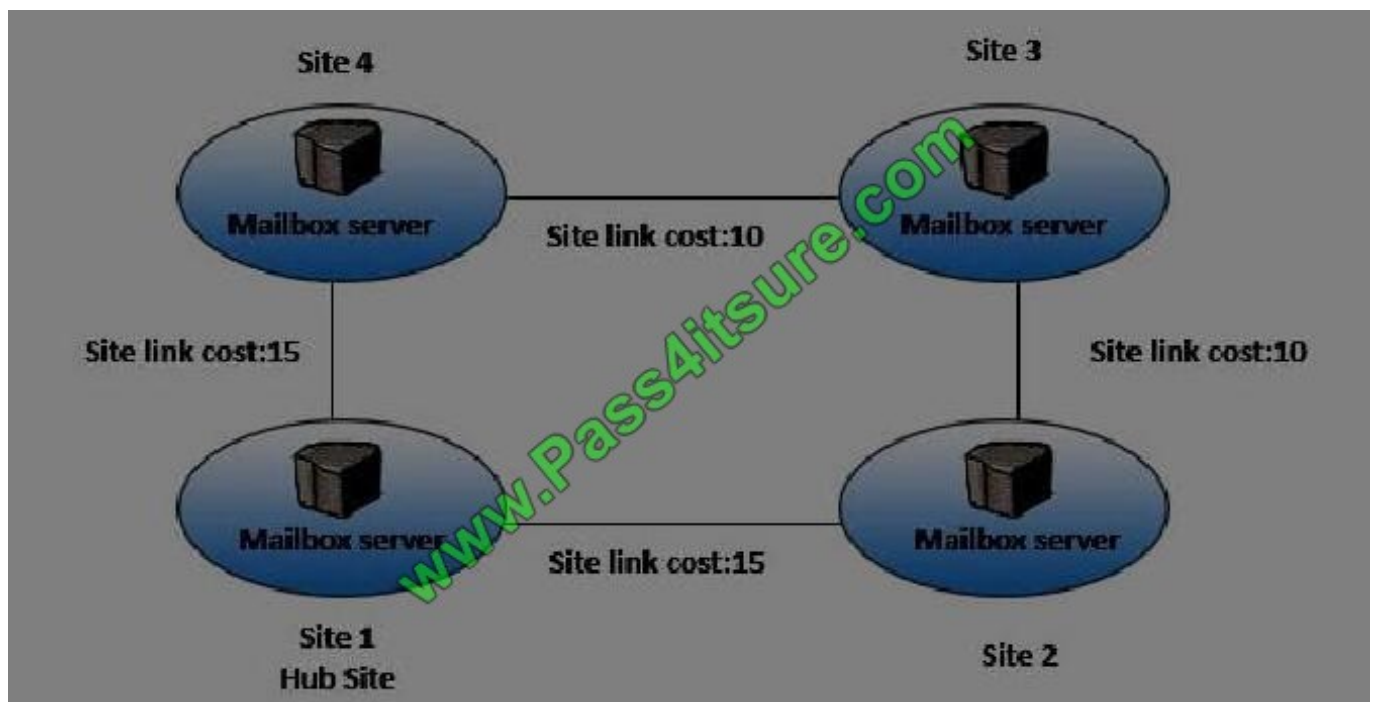
AdminUser2:

Help Desk
Organization Management
Recipient Management
Records Management
Server Management
View-Only Organization Management

QUESTION 8

HOTSPOT

You have an Exchange Server 2016 organization. The Active directory sites are configured as shown in the following graphic.





Use the drop-down menus to select the answer choice that completes each statement based on the information presented in the graphic.

Hot Area:

When a user from Site 4 sends an email message to user in Site 2, the message will be [answer choice].

If the server in Site 2 fails, all of the email messages sent from Site 4 to Site 2 will be queued on a server in [answer choice].

sent directly to Site 2
relayed through Site 1
relayed through Site 3

Site 1
Site 3
Site 4

Correct Answer:

When a user from Site 4 sends an email message to user in Site 2, the message will be [answer choice].

If the server in Site 2 fails, all of the email messages sent from Site 4 to Site 2 will be queued on a server in [answer choice].

sent directly to Site 2
relayed through Site 1
relayed through Site 3

Site 1
Site 3
Site 4

QUESTION 9

Your network contains a single Active Directory forest. The forest contains two sites named Site1 and Site2. Site 1 is an Internet-facing site. Site 2 is a non-Internet-facing site. You have an Exchange Server 2010 organization. The organization contains four servers.

Server name	Role	Active Directory site
CAS1	Client Access server, Hub Transport server	Site1
MBX1	Mailbox server	Site1
CAS2	Client Access server, Hub Transport server	Site2
MBX2	Mailbox server	Site2

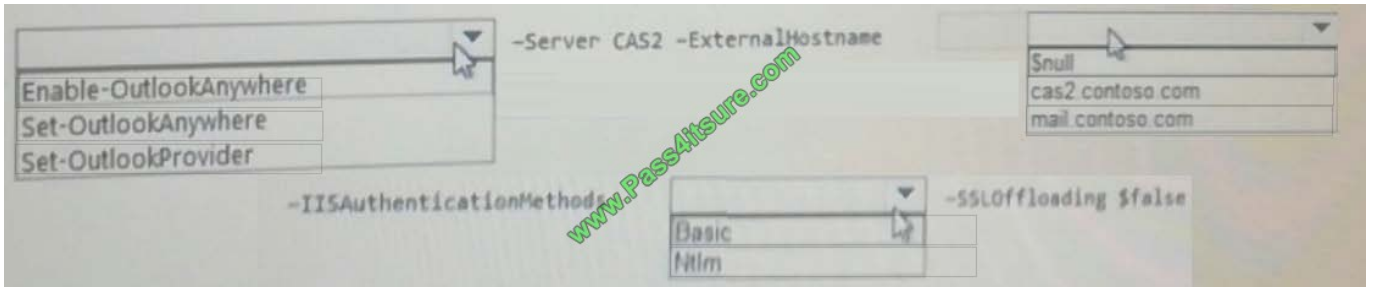
The servers are configured as shown in the following table.

The external namespaces of mail.contoso.com and autodiscover.contoso.com are associated to CAS1. Users who have a mailbox in Site2 use Outlook Anywhere to connect to their mailbox.

What should you run on CAS2?



Hot Area:



Correct Answer:



QUESTION 10

You have three Hyper-V hosts that each have 20 processor cores and 64 GB of RAM. Nine virtual machines are deployed to the hosts as shown in the following table.

Virtual machine name	Hyper-V host name	Number of processor cores	Amount of memory (GB)
DC1	Host1	4	8
FileServer1	Host1	4	8
WAP1	Host1	4	4
DC2	Host2	4	8
SQL1	Host2	12	32
ADFS1	Host2	4	8
Skype1	Host3	12	16
SharePoint1	Host3	12	16
SCOM1	Host3	8	12



Host1 is located in New York, Host2 is located in Los Angeles, and Host3 is located in Denver. None of the virtual machines use dynamic memory.

You plan to deploy a two-node Exchange Server 2016 database availability group (DAG) by using the virtual machines. Each node will have 12 processor cores and 24 GB of memory.

You are evaluating whether you can use the existing servers for the deployment or whether you must purchase additional servers.

You need to recommend where to place the Exchange servers. The solution must minimize costs.

What is the best recommendation to achieve the goal? More than one answer choice may achieve the goal. Select the BEST answer.

- A. One Exchange server on Host1 and one Exchange server on a new Hyper-V host.
- B. One Exchange server on Host1 and one Exchange server on Host3.
- C. Both Exchange servers on Host1.
- D. One Exchange server on Host1 and one Exchange server on Host2.
- E. One Exchange server on Host2 and one Exchange server on Host3.

Correct Answer: A

First, look at the CPU requirements for Exchange 2016.

"Exchange supports a virtual processor-to-logical processor ratio no greater than 2:1, although we recommend a ratio of 1:1. For example, a dual processor system using quad core processors contains a total of 8 logical processors in the host system. On a system with this configuration, don't allocate more than a total of 16 virtual processors to all guest virtual machines combined." Furthermore, the host operating system also needs 2 processors. source: [https://technet.microsoft.com/en-us/library/jj619301\(v=exchg.160\).aspx](https://technet.microsoft.com/en-us/library/jj619301(v=exchg.160).aspx)

Host 1 uses 12 out of 20 cores Host 2 uses 20 out of 20 cores Host 3 uses 32 out of 20 cores

You need 12 cores, so Host 3 lacks the resources. This leaves hosts 1 and 2.

Now, let's look to the memory requirements:

"...using dynamic memory or memory overcommit features for Exchange isn't supported." source: [https://technet.microsoft.com/en-us/library/jj619301\(v=exchg.160\).aspx](https://technet.microsoft.com/en-us/library/jj619301(v=exchg.160).aspx)

Host 1 uses 20 out of 64 GB Host 2 uses 48 out of 64 GB Host 3 uses 44 out of 64 GB

You need 24 GB for each VM.

Only host 1 has the resources for it.

It is not recommended to put both VM's on one host. So, the answer should be: A.

QUESTION 11

You have an Exchange Server 2016 organization.



The organization contains three Mailbox servers named EX01, EX02, and EX03.

The servers are members of a database availability group (DAG).

You have a mailbox database named DB01. DB01 is replicated to EX01 and EX02.

You need to add a replica of DB01 to EX03. The replica must meet the following requirements:

-
Transaction log files must not be applied to the replica for seven days after they are generated.

-
Transaction log files must be preserved for one day after they are applied to the database copy. What command should you run? To answer, select the appropriate options in the answer area.

Hot Area:

Answer Area

www.Pass4itsure.com

<input type="checkbox"/> <ul style="list-style-type: none"> Add-MailboxDatabaseCopy New-MailboxDatabase Set-DatabaseAvailabilityGroup 	<input type="checkbox"/> <ul style="list-style-type: none"> -Identity DB01 -Identity EX01\DB01 -Identity EX03\DB01 	<input type="checkbox"/> <ul style="list-style-type: none"> -MailboxServer EX03 -MailboxServer EX03\DB01 -SourceServer EX01
<input type="checkbox"/> <ul style="list-style-type: none"> -ReplayLagTime 01.00:00:00 -ReplayLagTime 07.00:00:00 	<input type="checkbox"/> <ul style="list-style-type: none"> -TruncationLagTime 01.00:00:00 -TruncationLagTime 07.00:00:00 	-ActivationPreference 3

Correct Answer:

Answer Area

www.Pass4itsure.com

<input checked="" type="checkbox"/> <ul style="list-style-type: none"> Add-MailboxDatabaseCopy New-MailboxDatabase Set-DatabaseAvailabilityGroup 	<input checked="" type="checkbox"/> <ul style="list-style-type: none"> -Identity DB01 -Identity EX01\DB01 -Identity EX03\DB01 	<input checked="" type="checkbox"/> <ul style="list-style-type: none"> -MailboxServer EX03 -MailboxServer EX03\DB01 -SourceServer EX01
<input checked="" type="checkbox"/> <ul style="list-style-type: none"> -ReplayLagTime 01.00:00:00 -ReplayLagTime 07.00:00:00 	<input checked="" type="checkbox"/> <ul style="list-style-type: none"> -TruncationLagTime 01.00:00:00 -TruncationLagTime 07.00:00:00 	-ActivationPreference 3



QUESTION 12

You are upgrading your Exchange Server 2010 organization to Exchange Server 2016.

You begin the migration to modern public folders.

You create public folder mailboxes. You start the migration batches and ensure that the batches have completed.

You need to finalize the migration to the modern public folders.

Which command should you run first? To answer, select the appropriate options in the answer area.

Hot Area:

▼
Complete-MigrationBatch
New-MigrationBatch
Set-OrganizationConfig
Start-MigrationBatch

▼
-PubicFoldersEnabled Remote
PFMigration
PubicFolderMigration
-LocalFolderEnabled Remote

▼
Complete-MigrationBatch
New-MigrationBatch
Set-OrganizationConfig
Start-MigrationBatch

▼
-PubicFoldersEnabled Remote
PFMigration
PubicFolderMigration
-LocalFolderEnabled Remote

Correct Answer:



▼
Complete-MigrationBatch
New-MigrationBatch
Set-OrganizationConfig
Start-MigrationBatch

▼
-PubicFoldersEnabled Remote
PFMigration
PubicFolderMigration
-LocalFolderEnabled Remote

▼
Complete-MigrationBatch
New-MigrationBatch
Set-OrganizationConfig
Start-MigrationBatch

▼
-PubicFoldersEnabled Remote
PFMigration
PubicFolderMigration
-LocalFolderEnabled Remote

QUESTION 13

You plan to create a new mailbox for the auditing department.

You need to recommend which task must be performed immediately after the mailbox is created. The solution must meet the compliance requirements.

What should you recommend?

- A. Enable an archive for the new mailbox.
- B. Place the new mailbox on Litigation Hold.
- C. Run the Set-Mailbox cmdlet.
- D. Run the Start-ManagedFolderAssistant cmdlet.

Correct Answer: B

QUESTION 14

You need to recommend which actions must be performed to upgrade the organization to Exchange Server 2016. The solution must meet the availability requirements.



Which five actions should you recommend be performed in sequence? To answer, move the appropriate actions from the list of actions to the answer area and arrange them in the correct order.

Select and Place:

Actions	Answer Area
Install Exchange Server 2016 on EX4 and EX5.	
Add EX1, EX2, and EX3 to DAG2.	
Add EX4 and EX5 to DAG2.	
Create a DAG named DAG2.	
Add the new servers to DAG2.	
Create mailbox database copies on all the members of DAG2.	
Move the mailboxes from DAG1 to DAG2.	
Install two new servers that have Exchange Server 2016 installed.	

www.Pass4itsure.com

⬇ ⬆

⬆ ⬇

Correct Answer:

**Actions**

Install Exchange Server 2016 on EX4 and EX5.

Add EX1, EX2, and EX3 to DAG2.

Add EX4 and EX5 to DAG2.

Answer Area

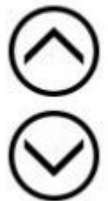
Install two new servers that have Exchange Server 2016 installed.

Create a DAG named DAG2.

Add the new servers to DAG2.

Create mailbox database copies on all the members of DAG2.

Move the mailboxes from DAG1 to DAG2.

**QUESTION 15**

You have a hybrid Exchange Server 2016 organization.

Some of the mailboxes in the research department are hosted on-premises. Other mailboxes in the research department are stored in Microsoft Office 365.

You need to search the mailboxes in the research department for email messages that contain a specific keyword in the message body.

What should you do?

- A. From the Exchange Online Exchange admin center, search the delivery reports.
- B. Form the on-premises Exchange admin center, search the delivery reports.
- C. From the Exchange Online Exchange admin center, create a new In-Place eDiscovery and Hold.
- D. From the Office 365 Compliance Center, create a new Compliance Search.
- E. From the on-premises Exchange admin center, create a new In-Place eDiscovery and Hold.



Correct Answer: E

References: [https://technet.microsoft.com/en-us/library/dd298021\(v=exchg.160\).aspx#howitworks](https://technet.microsoft.com/en-us/library/dd298021(v=exchg.160).aspx#howitworks)

[70-345 PDF Dumps](#)

[70-345 VCE Dumps](#)

[70-345 Brindumps](#)



To Read the [Whole Q&As](#), please purchase the [Complete Version](#) from [Our website](#).

Try our product !

100% Guaranteed Success

100% Money Back Guarantee

365 Days Free Update

Instant Download After Purchase

24x7 Customer Support

Average 99.9% Success Rate

More than 800,000 Satisfied Customers Worldwide

Multi-Platform capabilities - [Windows](#), [Mac](#), [Android](#), [iPhone](#), [iPod](#), [iPad](#), [Kindle](#)

We provide exam PDF and VCE of Cisco, Microsoft, IBM, CompTIA, Oracle and other IT Certifications. You can view Vendor list of All Certification Exams offered:

<https://www.pass4itsure.com/allproducts>

Need Help

Please provide as much detail as possible so we can best assist you.

To update a previously submitted ticket:



 <p>One Year Free Update Free update is available within One Year after your purchase. After One Year, you will get 50% discounts for updating. And we are proud to boast a 24/7 efficient Customer Support system via Email.</p>	 <p>Money Back Guarantee To ensure that you are spending on quality products, we provide 100% money back guarantee for 30 days from the date of purchase.</p>	 <p>Security & Privacy We respect customer privacy. We use McAfee's security service to provide you with utmost security for your personal information & peace of mind.</p>
---	---	--

Any charges made through this site will appear as Global Simulators Limited.

All trademarks are the property of their respective owners.

Copyright © pass4itsure, All Rights Reserved.