



# 70-336<sup>Q&As</sup>

Core Solutions of Microsoft Lync Server 2013

## Pass Microsoft 70-336 Exam with 100% Guarantee

Free Download Real Questions & Answers **PDF** and **VCE** file from:

<https://www.pass4itsure.com/70-336.html>

100% Passing Guarantee  
100% Money Back Assurance

Following Questions and Answers are all new published by Microsoft  
Official Exam Center

-  **Instant Download** After Purchase
-  **100% Money Back** Guarantee
-  **365 Days** Free Update
-  **800,000+** Satisfied Customers





### QUESTION 1

You need to move all users to the new Lync Server 2013 infrastructure.

What command should you run? (To answer, configure the appropriate command in the answer area.)

Get-CsUser [ ] | [ ] [ ] [ ]

-Identity all -OnLyncServer -UnassignedUser	Move-CsUser Set-CsUser Enable-CsUser	-Target -RegistrarPool -ProxyPool	fepool1.litware.com pool1.litware.com lync13_01.litware.com
---	--	---	---

Correct Answer:

Get-CsUser [ ] | [ ] [ ] [ ]

-Identity all -OnLyncServer -UnassignedUser	Move-CsUser Set-CsUser Enable-CsUser	-Target -RegistrarPool -ProxyPool	fepool1.litware.com pool1.litware.com lync13_01.litware.com
---	--	---	---

### QUESTION 2

You have a Lync Server 2013 infrastructure that contains four servers. The servers are configured as shown in the following table.

After a network failure, you restore Lync3.

You need to force replication between the servers.

What should you do?

- A. On Lync1, run the Invoke-CsManagementStoreReplication cmdlet.
- B. On Lync1, run the Invoke-CsBackupServiceSync cmdlet.
- C. On Lync3, run the Invoke-CsManagementStoreReplication cmdlet.
- D. On Lync3, run the Invoke-CsBackupServiceSync cmdlet.

Correct Answer: A

<http://technet.microsoft.com/en-us/library/gg413060.aspx>

### QUESTION 3

You need to recommend which actions must be performed to add the planned Lync Server 2013 servers.



Which three actions should you recommend in sequence? (To answer, move the appropriate three actions from the list of actions to the answer area and arrange them in the correct order.)

Select and Place:

	Answer Area
From Lync Server 2013 Topology Builder, save a copy of the topology.	
From Lync Server 2010 Topology Builder, publish the topology.	
From Lync Server 2013 Topology Builder, publish the topology.	
From Lync Server 2013 Topology Builder, configure the topology.	
From Lync Server 2010 Topology Builder, save a copy of the topology.	
From Lync Server 2010 Topology Builder, configure the topology.	

Correct Answer:



	Answer Area
From Lync Server 2013 Topology Builder, save a copy of the topology.	From Lync Server 2010 Topology Builder, save a copy of the topology.
From Lync Server 2010 Topology Builder, publish the topology.	From Lync Server 2013 Topology Builder, configure the topology.
	From Lync Server 2013 Topology Builder, publish the topology.
From Lync Server 2010 Topology Builder, configure the topology.	

#### QUESTION 4

You are planning a Lync Server 2013 deployment.

You need to recommend which Lync Server 2013 components are required to meet the following requirements:

Presence, chat, and multiparty video conferencing features must be provided.

Quality of Experience (QoE) data and call detail recording (CDR) must be provided.

Lync Server services must be provided to internal users only.

Licensing costs must be minimized.

Which two components should you recommend? (Each correct answer presents part of the solution. Choose two.)

- A. A Director pool
- B. A Standard Edition server
- C. An Enterprise Edition pool
- D. An Edge pool



E. A Microsoft SQL Server database

Correct Answer: BE

This question only requires internal features, ("Lync Server Services must be provided to internal users only") and Edge is not required for this.

Presence, Chat, and Multiparty Video Conferencing features must be provided.

Quality of Experience (QoE) Data and Call Detail Recording (CDR) must be provided.

Lync Server Services must be provided to Internal Users only.

Licensing Costs must be minimized.

### QUESTION 5

You plan to deploy a Lync Server 2013 Edge Server infrastructure. The Edge Server deployment will be configured as shown in the following table.

Server name	FQDN	Component	IP address
Server1	Sip.contoso.com	Access Edge service	131.107.1.1
Server1	Wc.contoso.com	Web Conferencing Edge service	131.107.1.2
Server1	Av.contoso.com	A/V Edge service	131.107.1.3

You need to configure the DNS records for Server1 to support the following features:

Automatic client sign-in

Discovery of federated partners

Which DNS records should you configure? To answer, configure the correct service, protocol, and host for each SRV record in the answer area.

Hot Area:





Answer Area

Service	Domain	Protocol	Port	Host
<input type="text"/> <input type="text" value="sip"/> <input type="text" value="sipfederationtls"/> <input type="text" value="sipfederationtcp"/>	Contoso.com	<input type="text" value="tcp"/> <input type="text" value="tls"/>	5061	<input type="text" value="Av.contoso.com"/> <input type="text" value="Sip.contoso.com"/> <input type="text" value="Wc.contoso.com"/>
<input type="text"/> <input type="text" value="sip"/> <input type="text" value="sipfederationtls"/> <input type="text" value="sipfederationtcp"/>	Contoso.com	<input type="text" value="tcp"/> <input type="text" value="tls"/>	443	<input type="text" value="Av.contoso.com"/> <input type="text" value="Sip.contoso.com"/> <input type="text" value="Wc.contoso.com"/>

Correct Answer:

Answer Area

Service	Domain	Protocol	Port	Host
<input type="text"/> <input type="text" value="sip"/> <input type="text" value="sipfederationtls"/> <input type="text" value="sipfederationtcp"/>	Contoso.com	<input type="text" value="tcp"/> <input type="text" value="tls"/>	5061	<input type="text" value="Av.contoso.com"/> <input type="text" value="Sip.contoso.com"/> <input type="text" value="Wc.contoso.com"/>
<input type="text"/> <input type="text" value="sip"/> <input type="text" value="sipfederationtls"/> <input type="text" value="sipfederationtcp"/>	Contoso.com	<input type="text" value="tcp"/> <input type="text" value="tls"/>	443	<input type="text" value="Av.contoso.com"/> <input type="text" value="Sip.contoso.com"/> <input type="text" value="Wc.contoso.com"/>

QUESTION 6

You have a Lync Server 2013 infrastructure that contains four servers. The servers are configured as shown in the following table.

Server name	Role
Lync1.contoso.com	Standard Edition
Lync2.contoso.com	Standard Edition
Lync3.contoso.com	Edge Server
Sql1.contoso.com	Microsoft SQL Server SQL Server Reporting Services (SSRS)



You run the Get-CsManagementStoreReplicationStatus cmdlet and discover the following replication issue:

```
UpToDate : True
ReplicaFqdn : Lync1
LastStatusReport : 12/9/2012 12:09:09 PM
LastUpdateCreation : 12/9/2012 12:09:03 PM
ProductVersion :

UpToDate : True
ReplicaFqdn : Lync2
LastStatusReport : 12/9/2012 12:09:09 PM
LastUpdateCreation : 12/9/2012 12:09:03 PM
ProductVersion :

UpToDate : False
ReplicaFqdn : Lync3
LastStatusReport :
LastUpdateCreation : 9/9/2012 12:09:03
ProductVersion :
```

From Telnet, you verify that you can connect to Lync3 over TCP ports 443, 4443, 5061, and 5062. You republish the topology successfully and you restart Lync3.

You need to identify what is causing the replication issue.

What should you identify?

- A. A firewall issue
- B. A failed service
- C. A share permission issue
- D. A certificate issue
- E. A routing issue

Correct Answer: D

Not Firewall issue as you can telnet to the ports

Not a Failed Service as you can telnet to the ports

Not a Share Permissions issue as replication is working with the other 2 servers.

Not Routing Issue, routing is working as telnet is functional.

## QUESTION 7

You have a Lync Server 2013 infrastructure that contains three Enterprise Edition Front End pools named Pool1, Pool2, and Pool3. Pool1 and Pool2 are located in a data center in Montreal. Pool3 is located in a data center in Seattle.

You need to recommend changes to the Lync Server 2013 infrastructure to ensure that all users can access Lync



services if a data center fails.

What should you recommend?

- A. Pair Pool1 and Pool3. Pair Pool2 and Pool3.
- B. Create a new pool named Pool4 in the Seattle data center. Pair Pool2 and Pool4. Pair Pool1 and Pool3.
- C. Create a new pool named Pool4 in the Seattle data center. Pair Pool3 and Pool4. Pair Pool1 and Pool2.
- D. Pair Pool1 and Pool2. Pair Pool2 and Pool3.

Correct Answer: B

<http://technet.microsoft.com/en-us/library/jj204697.aspx>

---

### QUESTION 8

You need to identify on which server you can install the Microsoft Office Web Apps server component. Which server should you identify?

- A. Lync1.contoso.com
- B. Server1.contoso.com
- C. Exchange1.contoso.com
- D. SQL1.contoso.com

Correct Answer: B

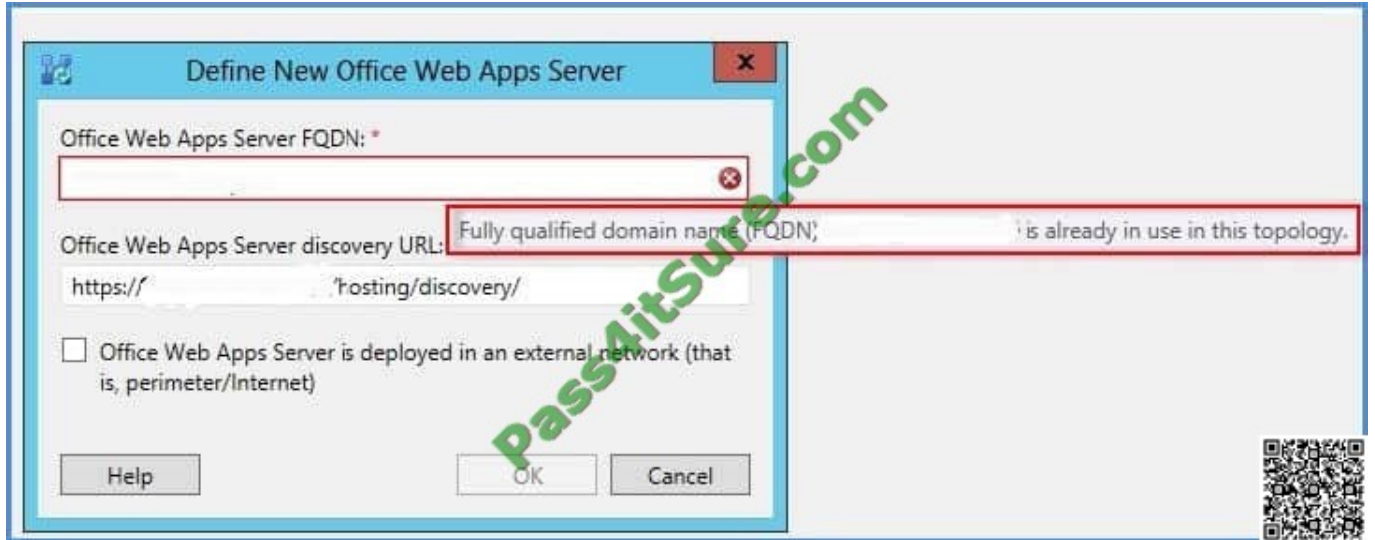
It is unclear what roles are on Server1, but you cannot collocate the web apps server on any server that has been defined in the topology. I have illustrated below trying to add web apps server using the same FQDN as my Standard Edition

Pool.

Server1 appears to be the only the correct answer, because in the case study Server1 is a member server with nothing installed on it.

Answer is Server1





### QUESTION 9

You need to identify which DNS record must be implemented for the planned federation relationship.

Which DNS record should you identify? To answer, select the appropriate configurations for the DNS record in the answer area.

Hot Area:

**Answer Area**

Type of DNS record:   
Service Location (SRV)   
Test (TXT)

Name of DNS record:   
xmpp-server.\_tcp.litwareinc.com   
\_sipfederationtls.\_tcp.litwareinc.com

Location:   
External DNS zone   
Internal DNS zone

Correct Answer:

**Answer Area**

Type of DNS record

  
Service Location (SRV)  
Test (TXT)

Name of DNS record

  
xmpp-server.\_tcp.litwareinc.com  
\_sipfederationtls.\_tcp.litwareinc.com

Location

  
External DNS zone  
Internal DNS zone**QUESTION 10**

You have a Lync Server 2013 infrastructure.

You deploy mobility features.

You need to ensure that mobile clients can establish IP video calls only when they connect to a wireless access point (WAP).

Which cmdlet should you run?

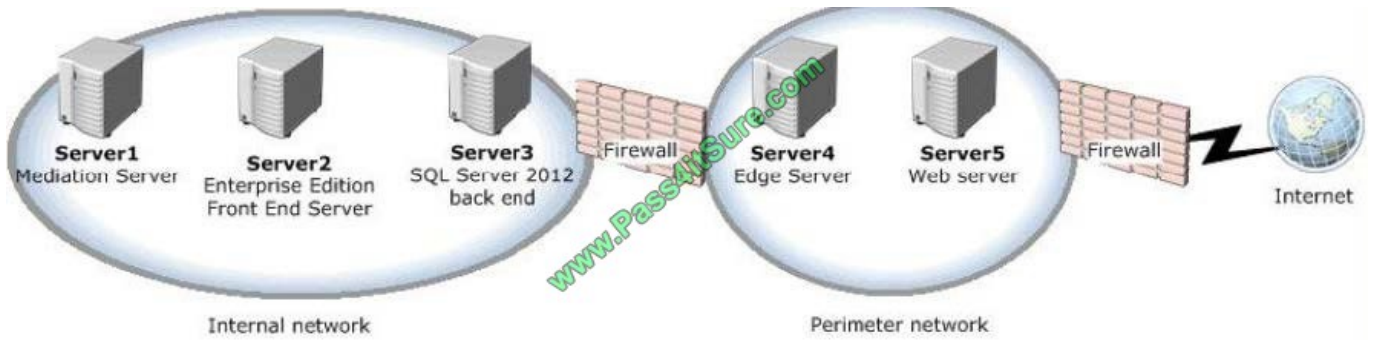
- A. Set-CsConferencingPolicy
- B. Set-CsLocationPolicy
- C. Set-CsNetworkBandwidthPolicyProfile
- D. Set-CsMobilityPolicy
- E. Set-CsClientPolicy

Correct Answer: D

Mobility policies can also be used to require Wi-Fi connections when making or receiving calls Ref: <http://technet.microsoft.com/en-us/library/hh690021.aspx>

**QUESTION 11**

You have a Lync Server 2013 infrastructure as shown in the exhibit.



The infrastructure contains an Enterprise Edition Front End pool.

You plan to deploy Persistent Chat.

You need to identify the placement of the components required for Persistent Chat. The solution must minimize the deployment of additional servers whenever possible.

Where should you deploy the Persistent Chat components? (To answer, select the appropriate server to deploy each component in the answer area.)

Hot Area:

Persistent Chat Front End Server:

- Server1
- Server2
- Server4
- Server5
- a new server on the internal network
- a new server on the perimeter network

Persistent Chat Server Store:

- Server1
- Server2
- Server3
- Server4
- Server5
- a new server on the internal network
- a new server on the perimeter network

Correct Answer:



Persistent Chat Front End Server:

Server1  
Server2  
Server4  
Server5  
a new server on the internal network  
a new server on the perimeter network

Persistent Chat Server Store:

Server1  
Server2  
Server3  
Server4  
Server5  
a new server on the internal network  
a new server on the perimeter network

**QUESTION 12**

You need to identify the minimum number of Lync Server 2013 servers and supporting server roles required in each Lync site to meet the business goals and the technical requirements.

How many servers should you identify? (To answer, select the appropriate number servers in the answer area.)

Edge Servers per site: 0

Front End Servers per site: 0

Office Web Apps Servers per site: 0

Microsoft SQL Servers per site: 0

Select four.

- A. Edge Servers per site: 0
- B. Edge Servers per site: 1
- C. Edge Servers per site: 2
- D. Edge Servers per site: 3
- E. Front End Servers per site: 0



- F. Front End Servers per site: 1
- G. Front End Servers per site: 2
- H. Front End Servers per site: 3
- I. Office Web Apps servers per site: 0
- J. Office Web Apps servers per site: 1
- K. Office Web Apps servers per site: 2
- L. Office Web Apps servers per site: 3
- M. Microsoft SQL Servers per site: 0
- N. Microsoft SQL Servers per site: 1
- O. Microsoft SQL Servers per site: 2
- P. Microsoft SQL Servers per site: 3

Correct Answer: CHKP

Contoso must minimize hardware and software purchasing costs, while guaranteeing performance levels for all Lync Server 2013 workloads.

If a single component fails, all Lync services must remain available without the need for manual intervention. Performance degradation is acceptable during a component failure state.

For the number of users, 3 FE servers are required. In the event of a failure, one server could not handle 15,000 users.

SQL mirroring is the recommended database HA solution in Lync 2013. To avoid manual intervention, you need a third server to act as a witness server. You could use a failover cluster using two servers but this tends to be more expensive in

terms of hardware cost.

[Latest 70-336 Dumps](#)

[70-336 VCE Dumps](#)

[70-336 Study Guide](#)



To Read the [Whole Q&As](#), please purchase the [Complete Version](#) from [Our website](#).

## Try our product !

100% Guaranteed Success

100% Money Back Guarantee

365 Days Free Update

Instant Download After Purchase

24x7 Customer Support

Average 99.9% Success Rate

More than 800,000 Satisfied Customers Worldwide

Multi-Platform capabilities - [Windows](#), [Mac](#), [Android](#), [iPhone](#), [iPod](#), [iPad](#), [Kindle](#)

We provide exam PDF and VCE of Cisco, Microsoft, IBM, CompTIA, Oracle and other IT Certifications. You can view Vendor list of All Certification Exams offered:

<https://www.pass4itsure.com/allproducts>

## Need Help

Please provide as much detail as possible so we can best assist you.

To update a previously submitted ticket:



 <p><b>One Year Free Update</b> Free update is available within One Year after your purchase. After One Year, you will get 50% discounts for updating. And we are proud to boast a 24/7 efficient Customer Support system via Email.</p>	 <p><b>Money Back Guarantee</b> To ensure that you are spending on quality products, we provide 100% money back guarantee for 30 days from the date of purchase.</p>	 <p><b>Security &amp; Privacy</b> We respect customer privacy. We use McAfee's security service to provide you with utmost security for your personal information &amp; peace of mind.</p>
---	---	--

Any charges made through this site will appear as Global Simulators Limited.

All trademarks are the property of their respective owners.

Copyright © pass4itsure, All Rights Reserved.